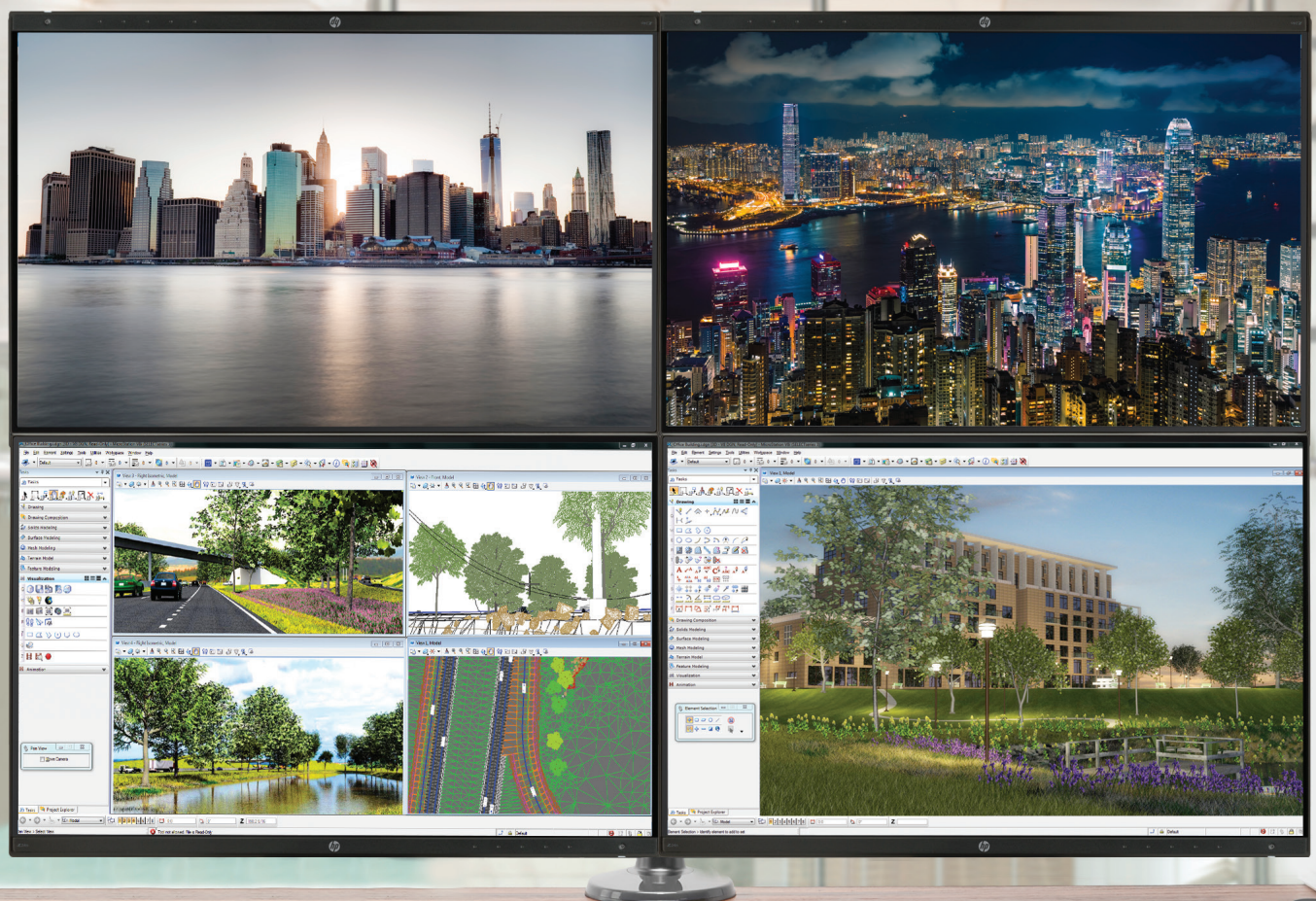


Quick reference guide

HP Z Displays



High Definition

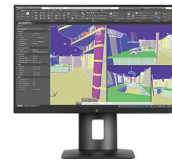
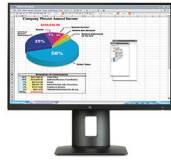
Meet our HP Z Displays
Family—compare features



	HP Z22n Narrow Bezel IPS Display	HP Z23n Narrow Bezel IPS Display
Overview	Create a captivating view with minimal visual disruptions with the three-sided, nearly borderless design. Enjoy factory colour calibration for consistent colour between projects and displays and flexible device connectivity.	
Panel type	IPS, LED Backlit	IPS, LED Backlit
Viewable image area	54.61 cm (21.5 in) widescreen; diagonally measured	58.42 cm (23 in) widescreen; diagonally measured
Viewing angle	Horizontal: 178 degrees Vertical: 178 degrees	Horizontal: 178 degrees Vertical: 178 degrees
Brightness¹	250 cd/m ²	250 cd/m ²
Contrast ratio¹	Static: 1000:1 Dynamic: 5,000,000:1	Static: 1000:1 Dynamic: 5,000,000:1
Response rate¹ (gray to gray)	7 ms	7 ms
Frequency	Horizontal: 30 - 80 kHz Vertical: 50 - 60 Hz	Horizontal: 30 - 80 kHz Vertical: 50 - 60 Hz
Aspect ratio	16:9	16:9
Native resolution	1920 x 1080 @ 60 Hz	1920 x 1080 @ 60 Hz
Input signal	(1) VGA (1) HDMI (1) DisplayPort™ 1.2 HDCP support on HDMI and DisplayPort™	(1) VGA (1) HDMI (1) DisplayPort™ 1.2 HDCP support on HDMI and DisplayPort™
USB ports	(3) USB 2.0 (two downstream and one upstream)	(3) USB 2.0 (two downstream and one upstream)
Adjustability	Tilt: -5° to +30° Swivel: 45°L to 45°R Height Adjustable: 150 mm Pivot Rotation: 90°	Tilt: -5° to +30° Swivel: 45°L to 45°R Height Adjustable: 150 mm Pivot Rotation: 90°
Dimensions (W x D x H)	With stand: 48.81 x 18.9 x 47.74 cm (19.23 x 7.44 x 18.8 in)	With stand: 52.08 x 18.9 x 48.66 cm (20.5 x 7.44 x 19.16 in)
Weight	With stand: 4.75 kg (10.47 lb)	With stand: 5 kg (11.02 lb)
Certification and compliance	ENERGY STAR®, EPEAT® Gold2, TCO Certified Edge, TCO, China Energy Label Grade 1, CCE, CB, KC, KCC, NOM, PSB, ICE, TUV-S, GS, ISO 9241-307, Australian-New Zealand MEPS, CCC, CECP, SEPA, EPA, ISC, VCCI, FCC, Taiwan: BSMI, SmartWay Transport Partnership - NA only, Microsoft WHQL Certification (Windows 8.1, Windows 8, Windows 7).	ENERGY STAR®, EPEAT® Gold2, TCO Certified Edge, TCO, China Energy Label Grade 1, CCE, CB, KC, KCC, NOM, PSB, ICE, TUV-S, GS, ISO 9241-307, Australian-New Zealand MEPS, CCC, CECP, SEPA, EPA, ISC, VCCI, FCC, Taiwan: BSMI, SmartWay Transport Partnership - NA only, Microsoft WHQL Certification (Windows 8.1, Windows 8, Windows 7).
Warranty	Protected by HP, including 3 year standard limited warranty. Optional HP Care Pack Services ³ are extended service contracts that extend your protection beyond the standard limited warranties.	Protected by HP, including 3 year standard limited warranty. Optional HP Care Pack Services ³ are extended service contracts that extend your protection beyond the standard limited warranties.

High Definition - Narrow Bezel

Meet our HP Z Displays
Family—compare features



	HP Z24n Narrow Bezel IPS Display	HP Z24nf Narrow Bezel IPS Display
Overview	Create a seamless multi-display array with virtually borderless screens ⁷ thanks to the ultra-thin bezel. Enjoy factory colour calibration and flexible connectivity. Daisy chain multiple displays with just one connection with the DisplayPort™ output.	
Panel type	IPS, LED Backlit	IPS, LED Backlit
Viewable image area	61.13 cm (24-inch) widescreen; diagonally measured	60.45 cm (23.8-inch) widescreen; diagonally measured
Viewing angle	Horizontal: 178 degrees Vertical: 178 degrees	Horizontal: 178 degrees Vertical: 178 degrees
Brightness¹	300 cd/m ²	250 cd/m ²
Contrast ratio¹	Static: 1000:1 Dynamic: 5,000,000:1	Static: 1000:1 Dynamic: 5,000,000:1
Response rate¹ (gray to gray)	14 ms	8 ms
Frequency	Horizontal: 30-75 kHz Vertical: 50-60 Hz	Horizontal: 30-75 kHz Vertical: 50-60 Hz
Aspect ratio	16:10	16:9
Native resolution	1920 x 1200 @ 60 Hz	1920 x 1080 @ 60 Hz
Input signal	(1) DVI-D (1) MHL 2.0 ⁵ /HDMI 1.4 (2) DisplayPort™ 1.2 (one in and one out) (1) Mini-DisplayPort™ HDCP support on all inputs	(1) DVI-D (1) MHL 2.0 ⁵ /HDMI 1.4 (2) DisplayPort™ 1.2 (one in and one out) (1) Mini-DisplayPort™ HDCP support on all inputs
USB ports	(5) USB 3.0 [four downstream (one fast charging) and one upstream]	(5) USB 3.0 [four downstream (one fast charging) and one upstream]
Adjustability	Tilt: -5° to +22° Swivel: 45°L to 45°R Height Adjustable: 130 +/-3 mm Pivot Rotation: 90°	Tilt: -2° to +22° Swivel: 45°L to 45°R Height Adjustable: 130 mm Pivot Rotation: 90°
Dimensions (W x D x H)	With stand: 53.38 x 21.01 x 52.02 cm (21.01 x 8.27 x 20.4 in)	With stand: 54.06 x 21.01 x 50.55 cm (21.28 x 8.27 x 19.90 in)
Weight	With stand: 5.78 kg (12.71 lb)	With stand: 5.2 kg (11.46 lb)
Certification and compliance	TCO Certified, TCO Certified EDGE, CEL Grade 1, ENERGY STAR® Certified, EPEAT® Gold ² , CB, TUV/GS, TUV/Ergo, TUV-S, UL, CCC, CECP, SEPA, BSMI, CE, FCC (Canada), BSMI, KC, VCCI, C-Tick, Microsoft WHQL Certification (Windows 8.1, Windows 8, and Windows 7); SmartWay Transport Partnership (NA)	TCO Certified, CEL Grade 2, ENERGY STAR® Certified, EPEAT® Gold ² , CB, TUV/GS, TUV/Ergo, TUV-S, UL, TCO Edge, CCC, CECP, CEL, SEPA, BSMI, CE, FCC (Canada), BSMI, KC, VCCI, C-Tick, Microsoft WHQL Certification (Windows 8.1 and Windows 7); SmartWay Transport Partnership (NA)
Warranty	Protected by HP, including 3 year standard limited warranty. Optional HP Care Pack Services ³ are extended service contracts that extend your protection beyond the standard limited warranties.	Protected by HP, including 3 year standard limited warranty. Optional HP Care Pack Services ³ are extended service contracts that extend your protection beyond the standard limited warranties.

High Definition - Narrow Bezel

Meet our HP Z Displays
Family—compare features



	HP Z25n Narrow Bezel IPS Display	HP Z27n Narrow Bezel IPS Display
Overview	Enable a virtually borderless panorama of multiple displays ⁷ with edge-to-edge screens for maximum Quad HD impact thanks to the ultra-thin bezel. Enjoy factory colour calibration and flexible connectivity. Daisy chain multiple displays with just one connection with the DisplayPort™ output.	
Panel type	IPS, LED Backlit	IPS, LED Backlit
Viewable image area	63.44 cm (25-inch) widescreen; diagonally measured	68.47 cm (27-inch) widescreen; diagonally measured
Viewing angle	Horizontal: 178 degrees Vertical: 178 degrees	Horizontal: 178 degrees Vertical: 178 degrees
Brightness¹	350 cd/m ²	350 cd/m ²
Contrast ratio¹	Static: 1000:1 Dynamic: 5,000,000:1	Static: 1000:1 Dynamic: 5,000,000:1
Response rate¹ (gray to gray)	14 ms	14 ms
Frequency	Horizontal: 30-90 kHz Vertical: 50-60 Hz	Horizontal: 30-90 kHz Vertical: 50-60 Hz
Aspect ratio	16:9	16:9
Native resolution	2560 x 1440 @ 60 Hz	2560 x 1440 @ 60 Hz
Input signal	(1) DVI-D (1) MHL 2.0 ⁵ /HDMI 1.4 (2) DisplayPort™ 1.2 (one in and one out) (1) Mini DisplayPort™ HDCP support on all inputs	(1) DVI-D (1) MHL 2.0 ⁵ /HDMI 1.4 (2) DisplayPort™ 1.2 (one in and one out) (1) Mini-DisplayPort™ HDCP support on all inputs
USB ports	(5) USB 3.0 [four downstream (one fast charging) and one upstream]	(5) USB 3.0 [four downstream (one fast charging) and one upstream]
Adjustability	Tilt: -5° to +22° Swivel: 45°L to 45°R Height Adjustable: 130 mm Pivot Rotation: 90°	Tilt: -5° to +22° Swivel: 45°L to 45°R Height Adjustable: 130 mm Pivot Rotation: 90°
Dimensions (W x D x H)	With stand: 57.05 x 21.82 x 52.15 cm (22.5 x 8.6 x 20.5 in)	With stand: 61.43 x 21.82 x 53.37 cm (24.2 x 8.6 x 21.0 in)
Weight	7.23 kg (15.9 lb)	7.66 kg (16.89 lb)
Certification and compliance	ENERGY STAR® Certified, EPEAT® Gold ² , TCO Edge, TCO, China Energy Label Grade 1, CB, TUV/GS, TUV/Ergo, TUV-S, UL, CCC, CECP, SEPA, BSMI, For EMI, CE, FCC (Canada), BSMI, KC, VCCI, C-Tick, SmartWay Transport Partnership - NA only, Microsoft WHQL Certification (Windows 8.1, Windows 8, Windows 7)	TCO Certified, CEL Grade 2, ENERGY STAR® Certified, EPEAT® Gold ² , CB, TUV/GS, TUV/Ergo, TUV-S, UL, TCO Edge, CCC, CECP, CEL, SEPA, BSMI, CE, FCC (Canada); BSMI, KC, VCCI, C-Tick; Microsoft WHQL Certification (Windows 8.1 and Windows 7); SmartWay Transport Partnership (NA)
Warranty	Protected by HP, including 3 year standard limited warranty. Optional HP Care Pack Services ³ are extended service contracts that extend your protection beyond the standard limited warranties.	Protected by HP, including 3 year standard limited warranty. Optional HP Care Pack Services ³ are extended service contracts that extend your protection beyond the standard limited warranties.

HP Z Performance

Meet our HP Z Displays
Family—compare features



	HP Z24i Performance Display	HP Z30i Performance Display
Overview	Work smarter and rely on a professional display designed for brilliant image accuracy, exceptional comfort, and energy savings.	
Panel type	IPS, LED Backlit	IPS, LED Backlit
Viewable image area	60.96 cm (24 in) widescreen; diagonally measured	75.78 cm (29.83 in) widescreen; diagonally measured
Viewing angle	Horizontal: 178 degrees Vertical: 178 degrees	Horizontal: 178 degrees Vertical: 178 degrees
Brightness¹	300 cd/m ²	350 cd/m ²
Contrast ratio¹	Static: 1000:1 Dynamic: 5,000,000:1	Static: 1000:1 Dynamic: 5,000,000:1
Response rate¹ (gray to gray)	8 ms	8 ms
Frequency	Horizontal: 24-94 kHz Vertical: 50-76 Hz	Horizontal: 31-80 kHz Vertical: 60-70 Hz
Aspect ratio	16:10	16:10
Native resolution	1920 x 1200 @ 60 Hz	2560 x 1600 @ 60 Hz
Input signal	(1) VGA, (1) DisplayPort™ 1.2 (1.1 compatible), (1) DVI-D; HDCP support on DisplayPort™ and DVI	(1) DisplayPort™ 1.2 (1.1 compatible), (1) DVI-D, (1) HDMI 1.4, (1) VGA; (HDCP support on DVI-D, DisplayPort™ and HDMI)
USB ports	(5) One upstream, four downstream ports (cable included)	(5) One upstream, four downstream ports (integrated USB 3.0 hub)
Adjustability	Tilt: -5° to +30° vertical Swivel: 45°L to 45°R Height Adjustable: 120 mm Pivot Rotation: Yes	Tilt: -5° to +20° Swivel: 45°L to 45°R Height Adjustable: 120 mm Pivot Rotation: 90°
Dimensions (W x D x H)	With stand: 55.94 x 23.79 x 52.5 cm (22.02 x 9.37 x 20.67 in)	With stand: 69.03 x 26.64 x 60.1 cm (27.18 x 10.49 x 23.66 in)
Weight	6.96 kg (15.35 lb)	9.96 kg (21.96 lb)
Certification and compliance	CE, CB, KC, KCC, NOM, PSB, ICE, TUV-S, CCC, TCO Certified, CEL Grade 1, CECP, SEPA, EPA, ISC, VCCI, FCC, HSMI, Microsoft WHQL Certification (Windows 8 and Windows 7), ENERGY STAR® Qualified, EPEAT® Gold ²	CE, CB, CEL Grade 1, KC, KCC, NOM, PSB, ICE, TUV-S, CCC, CECP, SEPA, TCO 6.0 Certification, EPA, ISC, VCCI, FCC, HSMI, Microsoft WHQL Certification (Windows 8 and Windows 7), ENERGY STAR® Qualified, EPEAT® Gold ²
Warranty	Protected by HP, including a 3 year standard limited warranty. Optional HP Care Pack Services are extended service contracts that extend your protection beyond the standard warranties. ³	Protected by HP, including a 3 year standard limited warranty. Optional HP Care Pack Services are extended service contracts that extend your protection beyond the standard warranties. ³

Ultra High Definition 4K/5K

Meet our HP Z Displays
Family—compare features



	HP Z27s IPS UHD 4K Display	HP Z27q 27-inch IPS 5K Display
Overview	Experience ultra-high definition/4K ⁴ image presentation and factory-calibrated colour accuracy out of the box.	Redefine life image presentation, featuring astounding 5K resolution plus a massive 14.7 MP and 218 ppi.
Panel type	IPS 4K, LED Backlit	IPS 5K, LED Backlit
Viewable image area	68.4 cm (26.9-inch) widescreen; diagonally measured	68.6 cm (27-inch) widescreen; diagonally measured
Viewing angle	Horizontal: 178 degrees Vertical: 178 degrees	Horizontal: 178 degrees Vertical: 178 degrees
Brightness¹	300 cd/m ²	300 cd/m ²
Contrast ratio¹	Static: 1000:1; Dynamic: 5,000,000:1	Static: 1000:1
Response rate¹ (gray to gray)	6 ms	14 ms
Frequency	Horizontal: 30-135 kHz Vertical: 24-60 Hz	Horizontal: 31-180 kHz Vertical: 50-60 Hz
Aspect ratio	16:9	16:9
Native resolution	3840 x 2160 @ 60 Hz (UHD) ⁴	5120 x 2880 @ 60 Hz
Input signal	(1) MHL 2.05/HDMI 1.4 (1) HDMI 1.4 (1) DisplayPort™ 1.2 (1) Mini-DisplayPort™ HDCP support on all inputs	(2) DisplayPort™ 1.2 HDCP support
USB ports	Integrated USB 3.0 hub with four downstream connectors	Integrated USB 3.0 hub with four downstream (one implements BC1.2) and one upstream ports
Adjustability	Tilt: -5° to +20° Swivel: 45°L to 45°R Height Adjustable: 120 mm Pivot Rotation: 90°	Tilt: -5° to +22° Swivel: 45°L to 45°R Height Adjustable: 130 mm
Dimensions (W x D x H)	With stand: 62.56 x 24.24 x 53.59 cm (24.62 x 9.54 x 21.1 in)	With stand: 63.43 x 21.71 x 54.88 cm (24.97 x 8.55 x 21.61 in)
Weight	With stand: 7.8 kg (17.2 lb)	With stand: 7.42 kg (16.36 lb)
Certification and compliance	TCO Certified, CEL Grade 2, Microsoft WHQL Certification (Windows 8.1 and Windows 7), CE, CB, KC, KCC, NOM, PSB, ICE, TUV-S, CCC, CECP, SEPA, EPA, ISC, VCCI, FCC, Taiwan: BSMI	TCO Certified, CEL Grade 2, Microsoft WHQL Certification (Windows 8.1 and Windows 7), CE, CB, KC, KCC, NOM, PSB, ICE, TUV-S, EAC, CCC, EPA, ISC, VCCI, FCC, Taiwan: BSMI
Warranty	Protected by HP, including 3 year standard limited warranty. Optional HP Care Pack Services ³ are extended service contracts that extend your protection beyond the standard limited warranties.	Protected by HP, including 3 year standard limited warranty. Optional HP Care Pack Services ³ are extended service contracts that extend your protection beyond the standard limited warranties.

Specialty



Meet our HP Z Displays
Family—compare features



	HP Z34c Curved Display	HP Zvr Virtual Reality Display
Overview	Raise the bar with 34 diagonal inches of an elegant, immersive, curved visual and audio experience.	Change the way you think, work, and create with a virtual-holographic 3D ⁷ image from the HP Zvr 23.6-inch Virtual Reality Display.
Panel type	VA, LED Backlit	TN, segmented LED Backlight
Viewable image area	86.36 cm (34-inch) widescreen; diagonally measured	59.94 cm (23.6-inch) widescreen; diagonally measured
Viewing angle	Horizontal: 178 degrees Vertical: 178 degrees	Horizontal: 170 degrees Vertical: 160 degrees
Brightness¹	350 cd/m ²	200 cd/m ²
Contrast ratio¹	Static: 3000:1 Dynamic: 10,000,000:1	3D mode: 300:1 2D mode: 1000:1
Response rate¹ (gray to gray)	8 ms w/overdrive; 14 ms w/out overdrive	5.6 ms w/out overdrive
Frequency	Horizontal: 30-80 kHz; Vertical: 60 Hz	Horizontal: 24-80 kHz; Vertical: 60-120Hz
Aspect ratio	21:9	16:9
Native resolution	3440 x 1440 @ 60 Hz	1920 x 1080 @ 60 Hz
Input signal	(1) MHL 2.0 ⁵ /HDMI 1.4 (1) HDMI 1.4 (1) DisplayPort™ 1.2 HDCP support on all inputs	(1) DVI-D (1) DisplayPort™ 1.2 HDCP support on all inputs
USB ports	Integrated USB 3.0 hub with two downstream ports with BC1.2 capability, and one upstream port	Integrated USB 2.0 hub with four downstream ports and one upstream port
Adjustability	Tilt: -2° to +25°	Tilt: -5° to +60°
Dimensions (W x D x H)	With stand: 95.08 x 19.72 x 47.71 cm (37.44 x 7.76 x 18.79 in)	With stand: 69 x 28.29 x 52.53 cm (27.17 x 11.14 x 20.68 in)
Weight	With stand: 9.83 kg (21.63 lbs)	With stand: 9.74 kg (21.43 lbs)
Certification and compliance	IT ECO declaration, TCO 6.0, RoHS, WEEE	FCC Class A for EMEA, FCC Class B for ROW
Warranty	Protected by HP, including 1 year standard limited warranty. Optional HP Care Pack Services ³ are extended service contracts that extend your protection beyond the standard limited warranties.	Protected by HP, including 3 year standard limited warranty. Optional HP Care Pack Services ³ are extended service contracts that extend your protection beyond the standard limited warranties.

DreamColor

Meet our
HP Z Displays
Family—compare
features



	HP DreamColor Z24x G2 Display	HP DreamColor Z27x Studio Display	HP DreamColor Z31x Cinema 4K Studio Display	HP DreamColor Z32x UHD Display
Overview	Enjoy pure, consistent colour accuracy from design to production with push-button colour space selection and easy colour calibration on the amazingly affordable 24-inch diagonal HP DreamColor Z24x G2 Display.	Work in brilliant, trusted colour and bring your ideas to life with the HP DreamColor Z27x Professional Display, featuring HP's unrivaled integrated calibration engine, 4K ⁶ input support, and 10-bit colour that drives up to 1.07 billion onscreen colours.	Captivate with the HP DreamColor Z31x Professional Display supporting Cinema 4K resolution, an expansive colour gamut for remarkably vivid colours, integrated colourimetre and custom-tailored management tools.	Go big or go home with the HP DreamColor Z32x 31.5-inch UHD Display, which has a staggering 8 million pixels, 4K resolution, and award-winning HP DreamColor technology.
Panel type	IPS, LED Backlit	IPS Gen 2, with HP Ultra Black technology and advanced wide gamut LED Backlight	IPS, LED Backlit IPS, LED Backlit	PLS w/LED Backlight
Viewable image area	60.96 cm (24 in) widescreen; diagonally measured	68.58 cm (27-inch) widescreen; diagonally measured	79 cm (31.1 in) widescreen; diagonally measured	80.01 cm (31.5-inch) widescreen; diagonally measured
Viewing angle	Horizontal: 178 degrees Vertical: 178 degrees	Horizontal: 178 degrees Vertical: 178 degrees	Horizontal: 178 degrees Vertical: 178 degrees	Horizontal: 178 degrees Vertical: 178 degrees
Brightness¹	350 cd/m ²	300 cd/m ²	350 cd/m ²	300 cd/m ²
Contrast ratio¹	Static: 1000:1 Dynamic: 5,000,000:1	800:1 minimum	Static: 1500:1	Static: 1000:1 Dynamic: 5,000,000:1
Response rate¹ (gray to gray)	6 ms	12 ms	20 ms	8 ms
Frequency	Horizontal: 24-80 kHz Vertical: 24-60 Hz	Horizontal: 24-113 kHz Vertical: 24-60 Hz	Horizontal: 24 - 60 kHz Vertical: 30 - 135Hz	60 Hz
Aspect ratio	16:10	16:9	17:9	16:9
Native resolution	1920 x 1200 @ 60 Hz	2560 x 1440 @ 60, 50 or 48 Hz	4096 x 2160 @ 60 Hz	3840 x 2160 @ 60 Hz
Input signal	(1) DVI-D (1) HDMI (2) DisplayPort™ 1.2 HDCP support on all inputs	(1) HDMI 1.4 (1) DisplayPort™ 1.2 (1) DisplayPort™ 1.1a HDCP support on all inputs	(1) USB-C (1) HDMI (2) DisplayPort™ 1.2 HDCP support on HDMI and DisplayPort™	(1) HDMI 2.0 (1) HDMI 1.4/MHL (1) DisplayPort™ standard (1) DisplayPort™ mini HDCP support on all inputs
USB ports	Integrated USB 3.0 hub with four downstream and one upstream ports	Integrated USB 3.0 hub with four downstream and one upstream ports	4 USB 3.0; 2 USB 2.0	Integrated USB 3.0 hub with four downstream (2 side and 2 rear) and one upstream ports
Adjustability	Tilt: -5° to +20° Swivel: 45°L to 45°R Height Adjustable: 120 mm Pivot Rotation: 90°	Tilt: -5° to +20° Swivel: 45°L to 45°R Height Adjustable: 120 mm Pivot Rotation: 90°	Tilt: -5° to +30° Swivel: 45°L to 45°R Height Adjustable: Yes Pivot Rotation: N/A	Tilt: -5° to +20° degrees Swivel: 45° L to 45° R Height Adjustable: 130 mm Pivot Rotation: 90°
Dimensions (W x D x H)	55.94 x 23.8 x 52.5 cm (22 x 9.4 x 20.7 in)	With stand: 64.1 x 65.5 x 37.92 cm (25.24 x 9.55 x 15.55 in)	73.80 x 24.80 x 56.60 cm (29.06 x 9.76 x 22.38 in)	With stand: 737.14 x 245.48 x 613.82 mm (29.02 x 9.66 x 24.17 in)

DreamColor (Continued)

	HP DreamColor Z24x Display	HP DreamColor Z27x Studio Display	HP DreamColor Z31x Cinema 4K Studio Display	HP DreamColor Z32x UHD Display
Weight	With stand: 6.98 kg (15.4 lb)	With stand: 8.8 kg (19.4 lb)	With stand: 15 kg (33 lb)	With stand: 10.9 kg (24.03 lb)
Certification and compliance	ENERGY STAR, TCO Certified, CEL Grade 1, Microsoft WHQL Certification (Windows 8 and Windows 7), FCC, CE mark, UL, TCO 6.0, TUV-GS, TUVKC–Ergonomics, WEEE, RoHS, C-Tick, Argentina S-Mark, VCCI, CECP, CCC, CEL Grade 1, Singapore PSB, EAC (Russia), NOM (Mexico), Ukraine	TCO Certified, CEL Grade 2, Microsoft WHQL Certification (Windows 8 and Windows 7), CE, CB, KC, KCC, NOM, PSB, ICE, TUV-S, CCC, CEL, SEPA, EPA, ISC, VCCI, FCC. Taiwan: BSMI	Microsoft WHQL Certification (Windows 10), SmartWay Transport Partnership (NA only), CEL/EUP Lot-5/EUP Lot-6/CE/CB/TUV GS/TUV ERGO/ISO 9241-307/CSA/FCC/ICES/KC/KCC/E-STAND BY/Vietnam MEPS/S-MARK/VCCI/CCC/BSMI/CECP	TCO Certified, CEL Grade 1, Microsoft WHQL, Certification (Windows 8 and Windows 7), CE,CB,KC/KCC/NOM/PSB/ICE/TUV-S/UL-CSA/CCC/CEL/CECP/SEPA/TCO6.0/EPA/ISC/VCCI/FCC / Taiwan: BSMI
Warranty	Protected by HP, including 3 year standard limited warranty. Optional HP Care Pack Services ³ are extended service contracts that extend your protection beyond the standard limited warranties.	Protected by HP, including 3 year standard limited warranty. Optional HP Care Pack Services ³ are extended service contracts that extend your protection beyond the standard limited warranties.	Protected by HP, including 3 year standard limited warranty. Optional HP Care Pack Services ³ are extended service contracts that extend your protection beyond the standard limited warranties.	Protected by HP, including 3 year standard limited warranty. Optional HP Care Pack Services ³ are extended service contracts that extend your protection beyond the standard limited warranties.

For more details, go to:

hp.com/go/zdisplays

¹All performance specifications represent the typical specifications provided by HP's component manufacturers; actual performance may vary either higher or lower.

²EPEAT® registered where applicable. EPEAT registration varies by country. See epeat.net for registration status by country.

³Service levels and response times for HP Care Pack Services may vary depending on your geographic location. Service starts from date of hardware purchase. Restrictions and limitations apply. See hp.com/go/cpc for details. HP services are governed by the applicable HP terms and conditions of service provided or indicated to Customer at the time of purchase. Customer may have additional statutory rights according to applicable local laws, and such rights are not in any way affected by the HP terms and conditions of service or the HP Limited Warranty provided with your HP Product.

⁴The video card must be capable of supporting 3840 × 2160 – 60Hz to drive the monitor at the Preferred Mode.

⁵MHL 2.0 port will charge a MHL compatible smart phone and tablet battery. Requires the smart phone or tablet to be enabled for MHL or have an HDMI dongle to connect to the monitor. See your mobile device specifications.

⁶4K content required to view 4K resolution.

⁷3D content is required for 3D performance.

Sign up for updates
hp.com/go/getupdated



Share with colleagues

© 2017 HP Development Company, L.P. The information contained herein is subject to change without notice. The only warranties for HP products and services are set forth in the express warranty statements accompanying such products and services. Nothing herein should be construed as constituting an additional warranty. HP shall not be liable for technical or editorial errors or omissions contained herein.

Microsoft and Windows are U.S. registered trademarks of the Microsoft group of companies. ENERGY STAR is a registered trademark owned by the U.S. Environmental Protection Agency.

4AA5-6357EEW, May 2017

