



netally.com

Network Test, Analysis,
& Cybersecurity Solutions



Testing you can trust, from a reliable ally.

For decades our family of innovative network test solutions have been helping network engineers and technicians better manage, maintain, and secure today's complex wired and wireless networks.

For more than 30 years, we have been the #1 ally of network professionals worldwide. We began by making the world's first handheld network analyzer – the LANMeter® – and have continued as industry pacesetters ever since, setting the standard for portable network testing and assessment.

When it comes to innovative, reliable, best-in-class portable network testing and edge security solutions, NetAlly is the name to trust. Our leading-edge, highly responsive tools get the job done fast by...

- Simplifying the complexities of network testing and security assessment
- Providing instant visibility for efficient problem solving and vulnerability detection
- Enabling seamless collaboration between site personnel and remote experts



simplicity



visibility



collaboration

AirMapper™ Ecosystem

WI-FI DESIGN, SITE SURVEY & TROUBLESHOOTING SOLUTION

The AirMapper Ecosystem is a suite of interoperable products that speed and simplify wired and Wi-Fi network planning, installation, validation, and troubleshooting.

NetAlly is the first to offer site survey data collection and network discovery in powerful handheld instruments, with complete infrastructure and heat mapping in the Link-Live™ collaboration, reporting, and analysis platform or AirMagnet® Survey PRO.

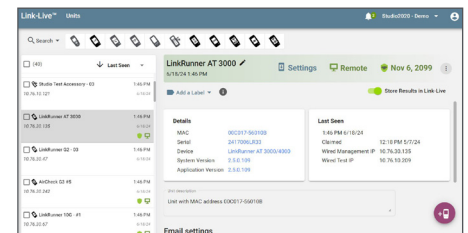
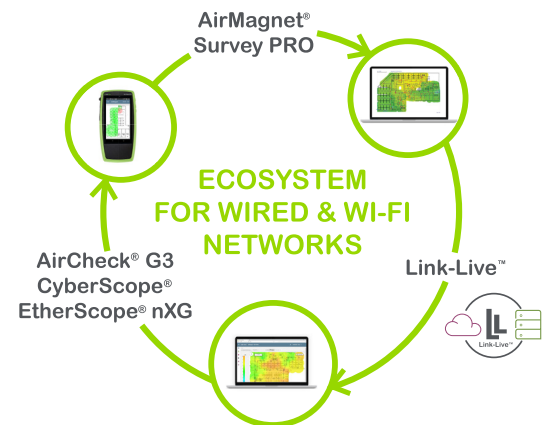
With the AirMapper Ecosystem, your team can design a Wi-Fi network with AirMagnet Survey PRO, quickly perform a validation site survey using the AirMapper app on the AirCheck® G3, CyberScope®, EtherScope® nXG, and easily collaborate through the use of Link-Live.

WHAT IS LINK-LIVE™?

Maintaining and coordinating a team of professionals to tackle Wi-Fi and wired network installation and management grows more challenging every day.

Available as a free cloud service or licensed private cloud/on-premise deployment, the Link-Live collaboration, reporting, and analysis platform transforms team workflows, allowing IT professionals to quickly and easily log, document, and report test activity from all NetAlly hand-held network testers and analyzers, enabling collaboration across your entire team.

- Available as a free cloud service or Link-Live Private Edition for licensed on premise or private cloud deployment
- Easily unify results, reporting, and data management in a secure cloud portal
- Better manage jobs, improve staff efficiency, and facilitate team collaboration



LINK-LIVE PRIVATE MODELS:
LL-PRVT-G (software download)
LL-PRVT-SUB (annual subscription)

CYBERSCOPE®

NETWORK VULNERABILITY SCANNER



CyberScope offers comprehensive cyber security risk assessment, analysis, and reporting for the network edge in a single, powerful, portable tool – including network discovery, wireless security, vulnerability assessment, plus segmentation and provisioning validation. It provides fast, actionable insights, filling the critical visibility gaps that other cybersecurity tools frequently do not address.

- Validates wired and Wi-Fi edge infrastructure hardening and controls
- Inventories everything including IoT, OT, and unmanaged devices
- Generate secure baselines, rapidly identify deviations and questionable activity
- Quickly test and demonstrate security policy compliance



MODELS:
CYBERSCOPE-CE-X2
CYBERSCOPE-XRF



MODEL:
CYBERSCOPE-AIR-X2

Cybersecurity Assessment Workflow

Complete visibility. It's what you need but despite all the resources you have, there are still critical gaps. CyberScope can help.

DISCOVER

VALIDATE

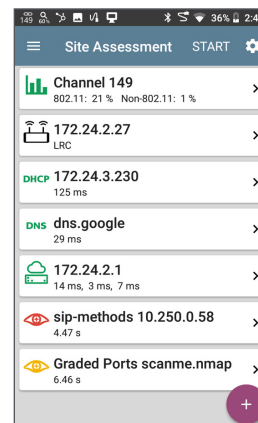
LOCATE

ANALYZE

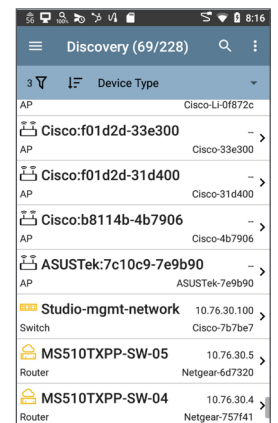
REPORT

MONITOR

NOTE: *CyberScope is available in three different versions. The full function CE version includes wired Ethernet and wireless (Wi-Fi and BT/BLE) capabilities. Wired only (XRF) and wireless only (AIR) models are also available - specific capabilities depend on the version. Refer to the CyberScope online [Model Comparison](#) for details.



Test Policy Compliance



Discovery Device List

Need support? We're here for you.

NetAlly's Customer Experience & Solutions Center is here to help you solve any product problems you encounter – from the simplest to the most complex. Our goal is to make sure you get the best results using our products and have a superior customer experience.

We're here to:

- Coach you through various aspects of product usage
- Quickly resolve your product issues to minimize downtime
- Serve as your technical advocate, drawing from experts across NetAlly to get you fast answers

Toll-Free (North America) 1-844-878-2559
International +1-719-755-0770



FEATURED PRODUCTS

EtherScope® nXG

PORTABLE NETWORK EXPERT



Deploying and maintaining Wi-Fi and wired network infrastructure without the right tools can be daunting... and costly. This multi-technology, all-in-one handheld network analyzer enables engineers and technicians to get more done faster in today's constantly changing Wi-Fi and Ethernet access networks.

- Real-time visibility into essential Wi-Fi 7 parameters like MLO, wider channels, WPA3 security, and 6 GHz adoption
- Verify multi-gig and 10G Ethernet link performance for critical servers, key end devices, and Wi-Fi networks
- Diagnose intermittent physical-layer issues that can be hard to detect with other tools with LANBERT media qualification
- Optional NXT-2000 spectrum analyzer offers a comprehensive view of RF interference
- Upload discovery data to Link-Live and instantly map your wired and Wi-Fi networks; speeds troubleshooting and keeps network documentation up-to date



MODELS:

EXG-300 • EXG-300-KT-X2
EXG-300-KT-2PK-X2
EXG-300-LR10G-KT-X2

AirCheck® G3

WIRELESS ANALYZER



Intuitive user interface delivers actionable intelligence, speeding and simplifying Wi-Fi deployment, troubleshooting, surveying, and validation. AirCheck G3 provides network professionals of any skill level with complete and accurate information to survey and validate Wi-Fi deployments and changes, resolve connectivity and performance problems quickly, speed up closure of trouble tickets and ensure your Wi-Fi network meets end users' needs.

- Wi-Fi 7, 2.4/5/6 GHz band, and Bluetooth/BLE support
- Validate Wi-Fi network performance for critical services and key end devices
- Quickly test, verify, troubleshoot, and map Wi-Fi networks
- Faster and easier Wi-Fi and Bluetooth/BLE site surveys with AirMapper™ Site Survey app
- Quickly find the physical location of Wi-Fi access points and clients on the 2.4 GHz, 5 GHz, and 6 GHz bands



MODELS:

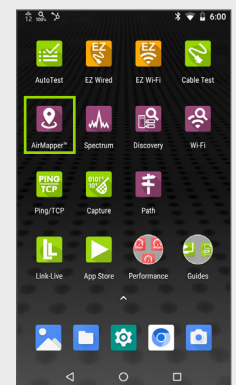
AIRCHECK-G3-PRO
AIRCHECK-G3-KT-X2
AIRCHECK-G3-TKT-X2

FEATURED APP

AirMapper™ Site Survey App

The AirMapper Site Survey app for the AirCheck G3, EtherScope nXG and CyberScope lets you quickly and easily gather location-based Wi-Fi measurements and create visual heat maps of key performance metrics in Link-Live™ or AirMagnet® Survey PRO.

- Conduct quick Wi-Fi and Bluetooth/BLE site surveys of new or existing deployments, change validation, and performance verification
- Perform enterprise-grade site surveys without a dongle or tethered device
- View professional SNR and noise measurements
- Gain insights into user experience to avoid performance complaints and costly Wi-Fi network re-design



AirMapper Site Survey App

LinkRunner® 10G

ADVANCED MULTIGIGABIT/10G CABLE & NETWORK TESTER

With network bandwidth demands increasing, gaining visibility into choke points, latency, and packet loss issues is more important than ever. Quickly test, verify, and troubleshoot line-rate 1Gig, Multi-Gig and 10Gig Ethernet with our handheld, multi-function tester.

- Delivers complete network validation, troubleshooting, and documentation; accelerates deployments, and speeds problem identification
- (2) LinkRunner 10G units can be used for LANBERT™ Media Qualification testing or for line-rate bandwidth performance testing to prove network capacity, performance and QoS, as well as service provider SLAs between sites
- Compatibility with standards-compliant SFPs enables test and validation of copper and fiber wired media
- Line-rate capture up to 10Gbps ensures you never miss a packet for in-depth analysis
- Optional USB Wi-Fi adapter enables basic Wi-Fi visibility through third-party apps, instant upload of test results to Link-Live, and web remote control



MODELS:
LR10G-200 • LR10G-200-KIT
EXG-300-LR10G-KT-X2

LinkRunner® AT 4000

ADVANCED ETHERNET TESTER

The LinkRunner AT 4000 is an advanced cable and network tester for Multigigabit NBASE-T and fiber Ethernet networks, including comprehensive network discovery and topology mapping with advanced diagnostics and problem detection for in-depth troubleshooting.

- Provides deep visibility, diagnostics, and packet capture for network technicians and engineers to quickly resolve issues impacting single or multiple devices and network segments.
- Automatically discovers, inventories, and documents network infrastructure devices, endpoints, and connection paths across multiple VLANs and subnets; detects common problems and generates topology maps in Link-Live.
- Comprehensive AutoTest validates and troubleshoots all aspects of network connectivity and services.
- Verifies available link speed from 10Mbps to 10Gbps, tests PoE, identifies connected switch port and VLAN.



MODELS:
LRAT-4000 • LRAT-4000-KIT
LINKSOLUTIONS-KT-4K

LinkRunner® AT 1500 & 3000

NEXT GENERATION ETHERNET AUTOTESTERS

The LinkRunner AT 1500 and 3000 are designed for frontline technicians and engineers who need fast and comprehensive validation of network links and powerful copper and fiber network connectivity troubleshooting.

- Enable frontline technicians to quickly and thoroughly validate links, troubleshoot device connectivity, and document moves, adds, and changes.
- Comprehensive AutoTest validates and troubleshoots all aspects of network link connectivity
- Verify available link speed from 10Mbps to 10Gbps, test PoE, and identify connected switch port and VLAN.
- Advanced twisted-pair cable and 90W PoE tests, fiber optic link signal strength power measurement and SFP diagnostics*.



MODELS:
LRAT-1500 • LRAT-3000
LRAT-3000-KIT
LINKSOLUTIONS-KT-3K

*Fiber optic and SFP diagnostics are only available for the LinkRunner AT 3000 model.

LinkSprinter®

10-SECOND POCKET NETWORK TESTER

Connectivity issues can be a major source of frustration for end users, putting you in the hot seat. This easy-to-use pocket network tester is ideal for frontline and help desk staff, offering a simple network connectivity test for copper Ethernet links, identifying errors and validating links in less than 10 seconds.

- Reveal network connectivity status and port information, while ensuring documentation for every link
- Measure PoE voltage, perform a switch test, and confirm that the DHCP server is running and responsive through the one-button AutoTest
- View detailed test results on your mobile device over built-in Wi-Fi hotspot
- Test results can be automatically uploaded to the Link-Live reporting and analysis platform improving collaboration between network engineers and frontline technicians



MODELS:
LSPRNTR-300
LSPRNTR-300-5PK
LSPRNTR-300-10PK

Test Accessory

POCKET IPERF SERVER

Validating throughput of your network is essential, and if done proactively can reveal the underlying issues that cause user complaints. Quickly and easily verify performance on any part of your network with our rugged, pocket-sized iPerf server, even when you have limited access to the infrastructure. Conducts some of the same network port tests as LinkSprinter and uploads test results to Link-Live™.

- Easily validate and troubleshoot network performance
- Eliminate the hassle of configuring an iPerf server
- Conveniently powered via PoE or AA batteries



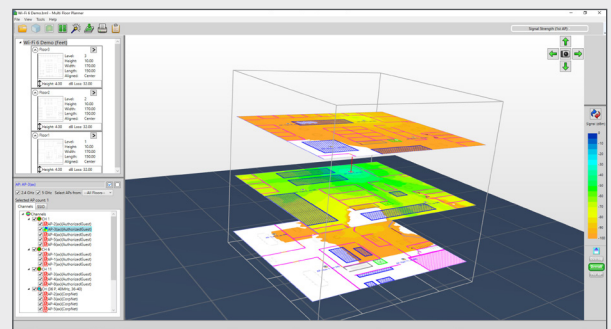
MODELS:
TEST-ACC
TEST-ACC-5PK
TEST-ACC-10PK

AirMagnet® Survey PRO

WIRELESS DESIGN & SITE SURVEY ANALYSIS SOFTWARE

Unreliable techniques for designing and surveying Wi-Fi networks can lead to costly redesigns, user complaints and satisfaction issues. Predictively model Wi-Fi network changes or design a new network for optimal coverage, connectivity, and performance with this comprehensive wireless design and site survey analysis software.

- Predictively model Wi-Fi network changes or design a new network without physically rolling out APs
- Collect real-world data by performing true end-user experience measurements using AirMapper Site Survey on the AirCheck® G3, CyberScope®, and EtherScope® nXG
- Generate heatmaps that provide full visibility of WLAN coverage, noise, SNR, interference, throughput, data rates, retries, loss, and more on the 2.4 GHz, 5 GHz or 6 GHz bands
- Simplify outdoor Wi-Fi site surveys with GPS support
- Easily customizable templates provide users with flexibility by allowing the creation of various professional reports



MODELS: AM/B4010G • AM/A4012G
AM/A4016G • AM/A4018G

AllyCare Premium Support Services

AllyCare is a comprehensive support and maintenance service for NetAlly's network tools and AirMagnet® software that offers significant value over standard warranty. By maintaining your AllyCare membership throughout the life of your product you can ensure your NetAlly handheld network tester or AirMagnet software is kept up to date with the latest features and functionality.



AllyCare can be purchased as either a one-year, two-year, or a value-added three-year membership.

MEMBERSHIP BENEFITS*

Support Features	with AllyCare Support	Standard Warranty
Latest Software & Firmware Updates	Yes	90-day manufacturing defects only
Repair Service Covered*	Yes	One-year manufacturing defects only
Accessory Replacements*	Yes	90-day manufacturing defects only
AllyCare-Enabled Product Features (See below)	Yes	No
Priority access to a Customer Experience & Solutions Expert	Warranty support, plus priority product functionality and issue troubleshooting	License, installation, registration, application launch and warranty repairs only

AllyCare-Enabled Product Feature		Product	With AllyCare	Without AllyCare
Full Heatmap Filters in Link-Live™	Include APs, Authorization Class, Band, BSSIDs, Channels, Channel Width, Min Basic Rates, Security, and Type.	AirCheck G3 CyberScope CyberScope Air EtherScope nXG	Yes	No
Full Survey Heatmaps in Link-Live	Include Noise, SNR, Adjacent Channel Interference, Co-Channel Interference, AP Coverage, Min Basic Rate, Beacon Overhead, Max TX/Rx rates, Max Tx/Rx MCS, QBSS Utilization, and QBSS Client Count.	AirCheck G3 CyberScope CyberScope Air EtherScope nXG	Yes	No
InSites Intelligence	Automatically compares the AirMapper Site Survey or Wi-Fi Discovery data collected on-site to a set of pre-defined (user customizable) thresholds, providing a visual Pass or Fail.	AirCheck G3 CyberScope CyberScope Air CyberScope XRF EtherScope nXG LinkRunner 10G LinkRunner AT 4000	Yes	No
Cloud-Based Remote Control	Simple and secure remote-control that allows you to connect from Link-Live directly to your network-connected AllyCare-enabled product (requires internet access).	AirCheck G3 CyberScope CyberScope Air CyberScope XRF EtherScope nXG LinkRunner 10G LinkRunner AT 1500/3000/4000	Yes	No
Full Topology Mapping in Link-Live	Include access to detailed map controls, filtering, and advanced reporting options.	AirCheck G3 CyberScope CyberScope Air CyberScope XRF EtherScope nXG LinkRunner 10G LinkRunner AT 4000	Yes	No

***AllyCare Restrictions** (See AllyCare Support Services Terms & Conditions for complete coverage and limitations at: www.netally.com/allycare-terms-and-conditions)

- Any product purchased from unauthorized third-parties (e.g., online auction site, end-users, aftermarket users, etc.) will not qualify for nor will receive AllyCare support. Also excluded are products that have been used and then resold.
- Repairs require prior qualification troubleshooting by our Customer Experience & Solutions Center. Damage covered is from normal wear and does not cover accidental product damage or loss. Accessories covered are those included with the original product purchase.
- Products that are sold with one-year AllyCare support included have certain features and capabilities enabled. At the end of your existing contract, you must renew your AllyCare support contract to continue utilizing the enabled features.
- AllyCare membership may not be available in all countries. Please confirm with your NetAlly representative before purchasing.

PRODUCT SELECTION GUIDE

Network Operations / MSPs Security Operations & MSSPs



Product / Feature	LinkSprinter	Test Accessory	LinkRunner AT 1500	LinkRunner AT 3000	LinkRunner AT 4000	LinkRunner 10G	EtherScope nXG	AirCheck G3	AirMagnet Survey PRO	CyberScope ¹	
Ethernet Copper	10/100/1000 Mbps		10/100/1000 Mbps (detects Multi-Gig and 10 Gbps)			10/100 Mbps & 1/2.5/5/10 Gbps				10/100 Mbps & 1/2.5/5/10 Gbps	
Ethernet Fiber				1 Gbps		1/10 Gbps				1/10 Gbps	
PoE Test (up to 90W at PSE, 71.3W at PD)	Voltage only		•	•	•	•	•			•	
Wiremap, Toner, & Cable Test Open/Short/Length	Cable Test Only		•	•	•	•	•			•	
Default Gateway, DNS, IP	1 IP Target		Unlimited Targets								Unlimited Targets
Wi-Fi Test/Heatmaps (up to Wi-Fi 7 & 2.4, 5, 6 GHz band)							•	•	•	•	
Wi-Fi Connection & Roaming Test							•	•	•	•	
Discover SSID, AP, & Clients							•	•	SSIDs & APs Only	•	
AirWISE® Intelligence							•	•	•	•	
AP & Client Locate							•	•	AP Locate Only	•	
RF Traffic Statistics							•	•		•	
AirMapper™ Site Survey ²							•	•	•	•	
Bluetooth/BLE Site Survey							•	•		•	
Wi-Fi Spectrum Analysis ³							Optional NXT-2000			Optional NXT-2000	
Network Topology Mapping ²					•	•	•	•		•	
Network Discovery					•	•	•	•		•	
Packet Capture					•	•	•	•		•	
LANBERT™ Media Qualification ⁴				Up to 1 Gbps		Up to 10 Gbps				Up to 10 Gbps	
iPerf Performance Test		•			•	•	•	•	•	•	
Line Rate Performance Test				Reflector Only		10 Gbps				10 Gbps	
Remote View/Control ²			•	•	•	•	•	•	Windows Apps	•	
Integration of Nmap into AutoTest & Network Discovery										•	
Standalone Nmap App / Custom Script Support										•	
Automated Discovery Monitoring										•	
Option to Disable Functionality*			•	•	•	•	•	•		•	

¹ The full function CE version includes wired Ethernet and wireless (Wi-Fi and BT/BLE) capabilities. Wired only (XRF) and wireless only (AIR) versions are also available - specific capabilities depend on the version. Refer to the CyberScope online [Model Comparison](#) for details.

² Depending on each product's capabilities, Link-Live gated features can include AirMapper enhanced site survey visualizations, advanced Network Topology Mapping filters, and Remote View/Control; these features are available to customers with AllyCare support or a Link-Live Enabled Features subscription.

³ NXT-2000 is not supported by AirCheck G3 or CyberScope Air testers manufactured before August 2024. Contact Customer Service at www.netally.com/contact-us for more information and available options.

⁴ LANBERT and Performance tests require the use of two units (or a loopback), a controller and remote.

*Allows disabling of specific product capabilities for use in secure environments.

Toll-Free (North America) 1-844-878-2559
International +1-719-755-0770

