



# STEM CEILING CEILING MICROPHONE ARRAY

## OVERVIEW

Stem Ceiling Microphone Array mounts above the conferencing space, providing uncompromising performance while keeping the technology out of sight. With adjustable beam options and the aesthetics needed to blend with any environment, Stem Ceiling eliminates distractions and keeps the focus on the conversation.

## FEATURES

- 100 built-in microphones create a wide, medium, or narrow beam to cover the room or a specific area as needed.
- Audio fencing mode completely removes outside noise and unwanted distractions (available in narrow beam setting only).
- Built-in digital signal processing includes state-of-the-art acoustic echo cancellation, automatic gain control, noise cancellation, and de-reverberation algorithms.
- Automatic configuration and control with Stem Ecosystem platform.
- LED light ring indicates when the device is active, muted, and other statuses.
- Compatible with leading video conferencing platforms.
- Directly connect the standalone device to a PC via USB or use Stem Control Touch Controller to integrate a Stem Ecosystem room solution for video conferencing.
- Power over Ethernet (PoE+).
- Dual mounting options: Low profile with square mount or suspended in chandelier mode.

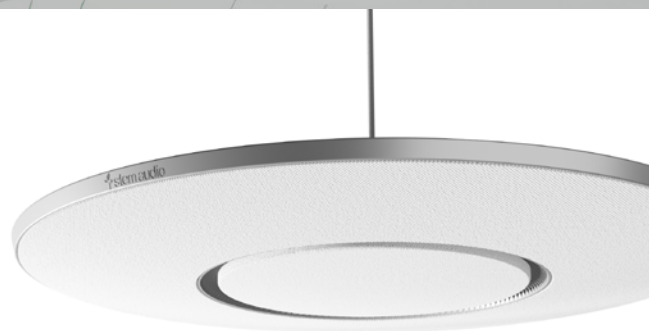
## SPECIFICATIONS (subject to change)

### GENERAL

Connector Type	RJ45 and USB Type B
Power Requirements	Power over Ethernet Plus (PoE+) 802.3 at Type 2
Control Application	Stem Ecosystem Platform
Weight	Microphone: 9 lbs (4.1 kg) Square Ceiling Mount: 7.5 lbs (3.4 kg)
Product Dimensions	Microphone: 21.5 x 1.75 in (54.6 x 4.4 cm) D x H at center; H at edge: 0.5 in (1.8cm) Square Ceiling Mount: 23.5 x 23.5 x 1.25 in (59.7 x 59.7 x 3.2 cm) L x W x H Suspension Cable Length: 120 in (304.8 cm)
Operating Temperature Range	-6.7°C (20°F) to 40°C (104°F)
Storage Temperature Range	-29°C (-20°F) to 74°C (165°F)

### AUDIO

Beam Width	Narrow (20 degrees), Medium (45 degrees), Wide (60 degrees)
Frequency Response	50 Hz to 16 kHz
Built-in DSP	Automatic Voice-Level Adjustment (AGC); 100% Full Duplex, no attenuation in either direction
Noise Cancellation	>15dB (without pumping noise)
Acoustic Echo Cancellation	>40dB with conversion speed of 40dB/sec; residual echo is suppressed to the environment noise level, preventing artificial ducking of signal; High-end performance conforms to ITU-T G.167



**STEM CEILING**  
Suspension Mount



**STEM CEILING**  
Low Profile Mount

## ACCESSORIES (included in the box)

CAT 6 Ethernet Cable: 15 ft. (4.6 m)

USB Type A to USB Type B Cable: 12 ft. (3.7 m)

Square Ceiling Mount

Suspension Kit

Grippler Kit

# STEM WALL WALL MOUNT ARRAY SPEAKERPHONE

## OVERVIEW

Stem Wall Mount Array Speakerphone is a high-quality microphone array with built-in speakers and subwoofers. Designed to be mounted on a wall or sit on a flat surface, it optimizes voice pick-up while providing full-range audio to make any environment sound like a professional conference room.

## FEATURES

- 15 built-in microphones create 180 degrees of coverage towards the voice source.
- Two full-range speakers and subwoofers.
- Built-in digital signal processing includes state-of-the-art acoustic echo cancellation, automatic gain control, noise cancellation, and de-reverberation algorithms.
- Automatic configuration and control with Stem Ecosystem platform.
- LED lights indicate voice direction and device status.
- Controls on the device include Volume Up, Down, and Mute.
- Compatible with leading video conferencing platforms.
- Directly connect the standalone device to a PC via USB or use Stem Control Touch Controller to integrate a Stem Ecosystem room solution for video conferencing.
- Power over Ethernet (PoE+).
- Dual mounting options: Wall mount or placed on a credenza.
- Mounting adapter for optional video camera.
- Kensington lock equipped.

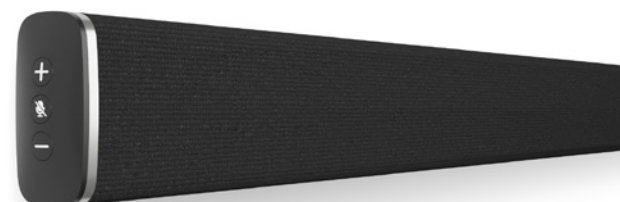
## SPECIFICATIONS (subject to change)

### GENERAL

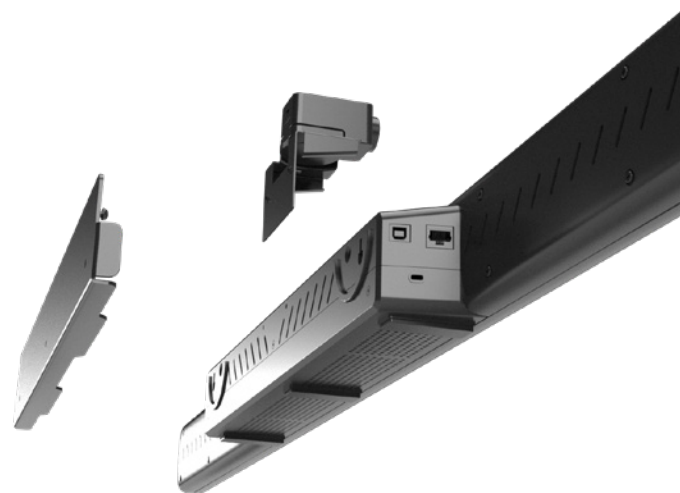
Connector Type	RJ45 and USB Type B
Power Requirements	Power over Ethernet Plus (PoE+) 802.3 at Type 2
Control Application	Stem Ecosystem Platform
Weight	7.5 lbs (3.4 kg)
Product Dimensions	48 x 3.25 x 3.5 in (121.9 x 8.3 x 8.9 cm) W x H x D
Operating Temperature Range	-6.7°C (20°F) to 40°C (104°F)
Storage Temperature Range	-29°C (-20°F) to 74°C (165°F)

### AUDIO

Coverage Angle	180 degrees
Frequency Response	50 Hz to 16 kHz
Built-in DSP	Automatic Voice-Level Adjustment (AGC); 100% Full Duplex, no attenuation in either direction
Noise Cancellation	>15dB (without pumping noise)
Acoustic Echo Cancellation	>40dB with conversion speed of 40dB/sec; residual echo is suppressed to the environment noise level, preventing artificial ducking of signal; High-end performance conforms to ITU-T G.168



**STEM WALL**  
Controls



**STEM WALL**  
Mounting & Connectivity

## ACCESSORIES (included in the box)

CAT 6 Ethernet Cable: 15 ft. (4.6 m)

USB Type A to USB Type B Cable: 12 ft. (3.7 m)

Wall Mount Bracket, Magnetic Level, Philips Head Screws with Anchors (3)

Camera Mount Accessory Kit



# STEM TABLE TABLE ARRAY SPEAKERPHONE

## OVERVIEW

Stem Table Array Speakerphone combines beamforming microphone arrays with an innovative loudspeaker and convenient on-device controls. Optimized for tablespots and flat surfaces, Stem Table takes the quality of meetings to the next level.

## FEATURES

- 9 built-in microphones pick up voices from 360 degrees.
- Downward-facing driver separates the speaker from the microphones for enhanced audio performance.
- Built-in digital signal processing includes state-of-the-art acoustic echo cancellation, automatic gain control, noise cancellation, and de-reverberation algorithms.
- Automatic configuration and control with Stem Ecosystem platform.
- LED lights indicate voice direction and device status.
- Controls on the device include Volume Up, Down, and Mute.
- Compatible with leading video conferencing platforms.
- Directly connect the standalone device to a PC via USB or use Stem Control Touch Controller to integrate a Stem Ecosystem room solution for video conferencing.
- Power over Ethernet (PoE+).
- Kensington lock equipped.

## SPECIFICATIONS (subject to change)

### GENERAL

Connector Type	RJ45 and USB Type B
Power Requirements	Power over Ethernet Plus (PoE+) 802.3 at Type 2
Control Application	Stem Ecosystem Platform
Weight	2.5 lbs (1.1 kg)
Product Dimensions	7.75 x 3 in (19.7 x 7.6 cm) D x H
Operating Temperature Range	-6.7°C (20°F) to 40°C (104°F)
Storage Temperature Range	-29°C (-20°F) to 74°C (165°F)

### AUDIO

Coverage Angle	360 degrees
Frequency Response	50 Hz to 16 kHz
Built-in DSP	Automatic Voice-Level Adjustment (AGC); 100% Full Duplex, no attenuation in either direction
Noise Cancellation	>15dB (without pumping noise)
Acoustic Echo Cancellation	>40dB with conversion speed of 40dB/sec; residual echo is suppressed to the environment noise level, preventing artificial ducking of signal; High-end performance conforms to ITU-T G.169
Speaker Power Handling	1 Speaker: 4 watts (RMS)



**STEM TABLE**  
Table Array



**STEM TABLE**  
Connectivity

## ACCESSORIES (included in the box)

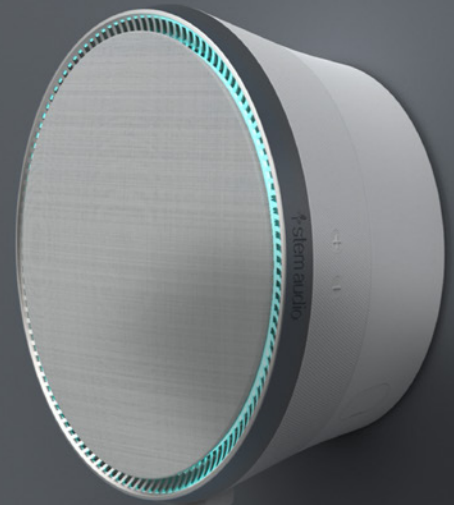
CAT 6 Ethernet Cable: 15 ft. (4.6 m)

USB Type A to USB Type B Cable: 12 ft. (3.7 m)



SHURE

# STEM ECOSYSTEM



## STEM SPEAKER NETWORKED LOUDSPEAKER

### OVERVIEW

Stem Speaker Networked Loudspeaker delivers exceptional sound experiences in any meeting room with its powerful drivers and built-in technology, while a choice of table, wall, or ceiling mounting options provide ultimate flexibility to highlight the tech or keep it low-profile in the room.

### FEATURES

- Compatible with other Stem Ecosystem devices to expand sound in any meeting space.
- Can be used beyond video conferencing to also play program audio, background music, to listen to songs at full volume.
- LED light ring indicates device status.
- Controls on the device include Volume Up and Down. Speaker volume can also be adjusted using Stem Control Touch Controller.
- Power over Ethernet (PoE+).
- Three mounting options: Ceiling mount, wall mount, or standing.
- Kensington lock equipped.

### SPECIFICATIONS (subject to change)

#### GENERAL

Connector Type	RJ45
Power Requirements	Power over Ethernet Plus (PoE+)
Power Consumption	22 Watts (PoE+)
Control Application	Stem Ecosystem Platform
Weight	5.6 lbs (2.5 kg)
Product Dimensions	9 x 4 in (22.9 x 10.2 cm) Diameter x Depth
Operating Temperature Range	-6.7°C (20°F) to 40°C (104°F)
Storage Temperature Range	-29°C (-20°F) to 74°C (165°F)

#### AUDIO

Frequency Response	60Hz to 20kHz
Maximum Output Level (at 1 meter)	102 dB SPL

### ACCESSORIES (included in the box)

CAT 6 Ethernet Cable: 15 ft. (4.6 m)
Aluminum Ring for Ceiling Mounting
Wall Mounting Kit (Screws and Drywall Anchors)
Legs and Rubber Screw Head Covers for Tabletop Setup



**STEM SPEAKER**  
Ceiling Mount



**STEM SPEAKER**  
Table Stand



**STEM SPEAKER**  
Connectivity

# STEM HUB & HUB EXPRESS COMMUNICATION CENTER

## OVERVIEW

Stem Hub Communication Center is required when more than one Stem Ecosystem audio endpoint is used in a room, allowing multiple devices to communicate with each other and function as an ecosystem. With two different variations to choose from, Hub and Hub Express, you have a variety of flexible connectivity options to integrate with conferencing platforms or expand the system over any network infrastructure.

- Connects up to 10 audio endpoints, centralizes and processes signals from all connected devices to provide a single audio channel for the entire room.
- Ethernet connection provides the device with data, power, SIP, and the ability to communicate with other networked endpoints.
- Hub: Dante® digital audio networking (1 input / 1 output) including compatibility with Dante Domain Manager for seamless expansion over any network infrastructure.
- USB connectivity allows to connect a Stem Ecosystem room solution directly to a PC for video conferencing. Power over Ethernet (PoE+).
- Terminal block connector is available to connect existing analog speakers in the room or to add them for additional speaker output.
- Power over Ethernet (PoE+).
- Wall mountable with slim design to hide the device behind a screen.
- Kensington lock equipped.

## SPECIFICATIONS (subject to change)

### GENERAL

Connector Type	RJ45 and USB Type B
Power Requirements	Power over Ethernet Plus (PoE+) 802.3 at Type 2
Control Application	Stem Ecosystem Platform
Weight	0.5 lbs (0.23 kg)
Product Dimensions	7 x 1.5 in (17.8 x 3.8 cm) D x H
Operating Temperature Range	-6.7°C (20°F) to 40°C (104°F)
Storage Temperature Range	-29°C (-20°F) to 74°C (165°F)

### AUDIO

Frequency Response	50 Hz to 16 kHz
--------------------	-----------------

## ACCESSORIES (included in the box)

CAT 6 Ethernet Cable: 15 ft. (4.6 m)

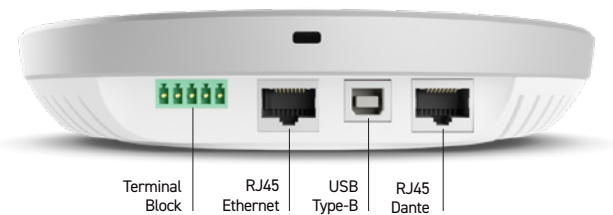
USB Type A to USB Type B Cable: 12 ft. (3.7 m)

Terminal Connector

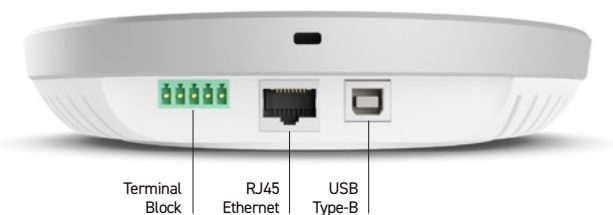
Wall Mounting Kit (Screws and Drywall Anchors)



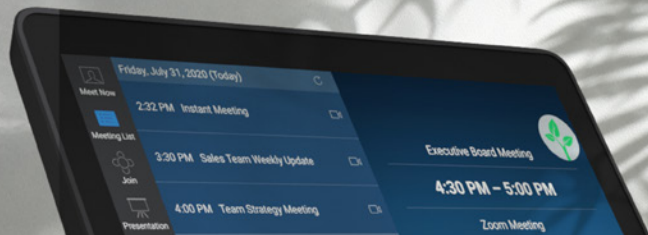
**STEM HUB & HUB EXPRESS**  
Communication Center



**STEM HUB**  
Connections



**STEM HUB EXPRESS**  
Connections



# STEM CONTROL TOUCH CONTROLLER

## OVERVIEW

Stem Control Touch Controller is an optional support device that provides full access to the Stem Ecosystem platform to set-up, monitor, and manage connected rooms and devices. Seamless integrations with leading video conferencing applications allows to initiate push-to-start meetings, while data-rich usage statistics enable better performance management, all in one place.

## FEATURES

- 10 inch LED touch display.
- One-touch access to Stem Ecosystem tools including RoomDesign, RoomCheck, Remote Management, and advanced device settings.
- SIP-enabled dial pad and integration with major video conferencing applications allow to launch audio or video calls directly from the controller.
- Simple user interface with Lock & Unlock feature to restrict access to back-end controls.
- Power over Ethernet (PoE+).
- Dual mounting options: Lay down at 45 degree angle or sit up at 60 degree angle.
- Kensington lock equipped.

## SPECIFICATIONS (subject to change)

### GENERAL

Connector Type	RJ45
Power Requirements	Power over Ethernet Plus (PoE+) 802.3 at Type 2
Control Application	Stem Ecosystem Platform
Weight	1.7 lbs (0.77 kg)
Product Dimensions	9.6 x 5.7 x 3.7 in (24.4 x 14.5 x 9.4 cm) W x H x D
Operating Temperature Range	-6.7°C (20°F) to 40°C (104°F)
Storage Temperature Range	-29°C (-20°F) to 74°C (165°F)

### PROCESSOR

Multimedia	Qualcomm® Snapdragon™ 820 Quad Core (APQ8096 SoC) QualcommKryo™ 64-bit CPU @2.2GHz each Qualcomm Adreno™ 530 GPU Qualcomm Hexagon™ DSP 680
Memory / Storage	4GB LPDDR4, 16GB eMMC
Operating System	Pre-loaded Android Pie

## ACCESSORY (included in the box)

CAT 6 Ethernet Cable: 15 ft. (4.6 m)



STEM CONTROL  
Touch Controller



STEM CONTROL  
Connectivity

### DISPLAY

Screen Size	10.1 inch
Dimensions	229 x 149 mm W x H
Active Area	217 x 136 mm W x H
Resolution	1280(RGB) x 800
Technology Type	a-si TFT Pixel
Configuration	R.G.B. Vertical Stripe
Pixel Pitch	0.1695 x 0.1695 mm
Display Mode	TM, Normally Black
Surface Treatment	HC