



## VA2256-MHD\_H2 - 22" 1080P IPS DUAL PACK HEAD-ONLY MONITORS WITH FREESYNC, HDMI AND VGA

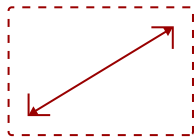
### Key Features

---

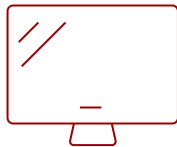
- 22 Inch Full HD (1920x1080p) IPS monitors with thin bezels and 75Hz refresh rate
- Sold as a dual pack without monitor stands for easy dual-screen installation
- Flicker-Free technology and Blue Light Filter for reduced eye fatigue
- FreeSync technology enables smooth frame rates to aid you in battle
- Optimized view settings offer "Game," "Movie," "Web," "Text," and "Mono" presets
- The VA2256-MHD\_H2 supports laptops, PCs, Macs and more with HDMI, DisplayPort, and VGA inputs



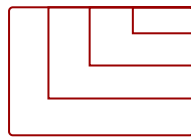
Future-Proof inputs for flexible connectivity options.



22  
DISPLAY



IPS  
PANEL



1920x1080  
RESOLUTION



- x1 HDMI
- x1 DisplayPort
- x1 VGA
- x1 Audio In/Out

x2 2-watt integrated speakers

### Product Description

---

The ViewSonic® VA2256-mhd\_H2 dual monitor pack delivers an efficient end-to-end enterprise experience. From easy installation, to recycling, to long-term reliability, this dual monitor solution reduces the total cost of ownership beyond the initial purchase price. Sold as a dual pack of monitors without monitor stands, the VA2256-mhd\_H2 ships in biodegradable packaging to minimize recycling costs and waste. Standard VESA-compatible mounting offers easy dual-screen installation, while a 3-sided thin bezel design provides a seamless viewing experience for multi-monitor setups. SuperClear® IPS panel technology delivers wide-angle viewing and incredibly vivid colors. Extensive connectivity options include VGA, HDMI, and DisplayPort so that you can connect to a variety of HD and analog devices – today and tomorrow.

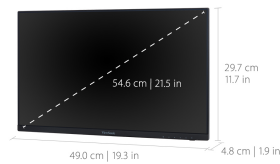
# Specifications

---

	More Information
<b>Screen Size</b>	22
<b>Viewable Area (in.)</b>	21.5
<b>Panel Type</b>	IPS
<b>Display Resolution</b>	1920 x 1080
<b>Display Resolution</b>	Full HD (1920x1080)
<b>Static Contrast Ratio</b>	1,000:1
<b>Dynamic Contrast Ratio</b>	50,000,000:1
<b>Light Source</b>	LED
<b>Brightness</b>	250 cd/m2
<b>Colors</b>	16.7M
<b>Aspect Ratio</b>	16:9
<b>Response Time (Typical GTG)</b>	5ms
<b>Viewing Angles</b>	178° horizontal, 178° vertical
<b>Backlight Life (Hours)</b>	30,000
<b>Panel Surface</b>	Anti-glare
<b>PC Resolution (max)</b>	1920x1080
<b>Mac® Resolution (max)</b>	1920x1080
<b>3.5mm Audio In</b>	1
<b>3.5mm Audio Out</b>	1
<b>HDMI In</b>	1
<b>VGA</b>	1
<b>Internal Speakers</b>	2W (x2)
<b>Eco Mode (Conserve)</b>	18W
<b>Eco Mode (optimized)</b>	22W
<b>Consumption (typical)</b>	23W
<b>Consumption (max)</b>	31W
<b>Voltage</b>	100-240 VAC, 50-60Hz
<b>Stand-by</b>	0.5W
<b>Power Supply</b>	Internal
<b>Cable Organization</b>	No
<b>Physical Controls</b>	Key 1 (favorite), Key 2, Key 3, Key 4, Key 5, Key 6 (power)
<b>On Screen Display</b>	Input Select, Audio Adjust, ViewMode, Color Adjust, Manual Image Adjust, Setup Menu
<b>Temperature</b>	32-104° F (0 - 40° C)

<b>Humidity (non-condensing)</b>	20-90%
<b>Net Without Stand (lbs)</b>	12.8
<b>Gross (lbs)</b>	18.5
<b>Net Without Stand (kg)</b>	5.8
<b>Gross (kg)</b>	8.4
<b>Packaging (in.)</b>	21.4 x 15.7 x 7.1
<b>Physical Without Stand (in.)</b>	19.3 x 11.7 x 1.9
<b>Packaging (mm)</b>	544.0 x 400.0 x 180.0
<b>Physical Without Stand (mm)</b>	490.0 x 297.0 x 48.0
<b>Regulations</b>	cULus FCC-B, ICES003, Energy Star Certified, EPEAT Certified, MX-CoC, Mexico Energy
<b>PACKAGE CONTENTS</b>	VA2256-MHD_H x2, 3-pin Plug (IEC C13 / CEE22) x2, HDMI Cable (v1.4; Male-Male) x1, DisplayPort Cable (v1.2; Male-Male) x1, Quick Start Guide x2
<b>Recycle/Disposal</b>	Please dispose of in accordance with local, state or federal laws.

UPC: 766907009873



**Contact Sales**  
[ViewSonic.com](http://ViewSonic.com)  
 888.881.8781  
 email: [salesinfo@viewsonic.com](mailto:salesinfo@viewsonic.com)