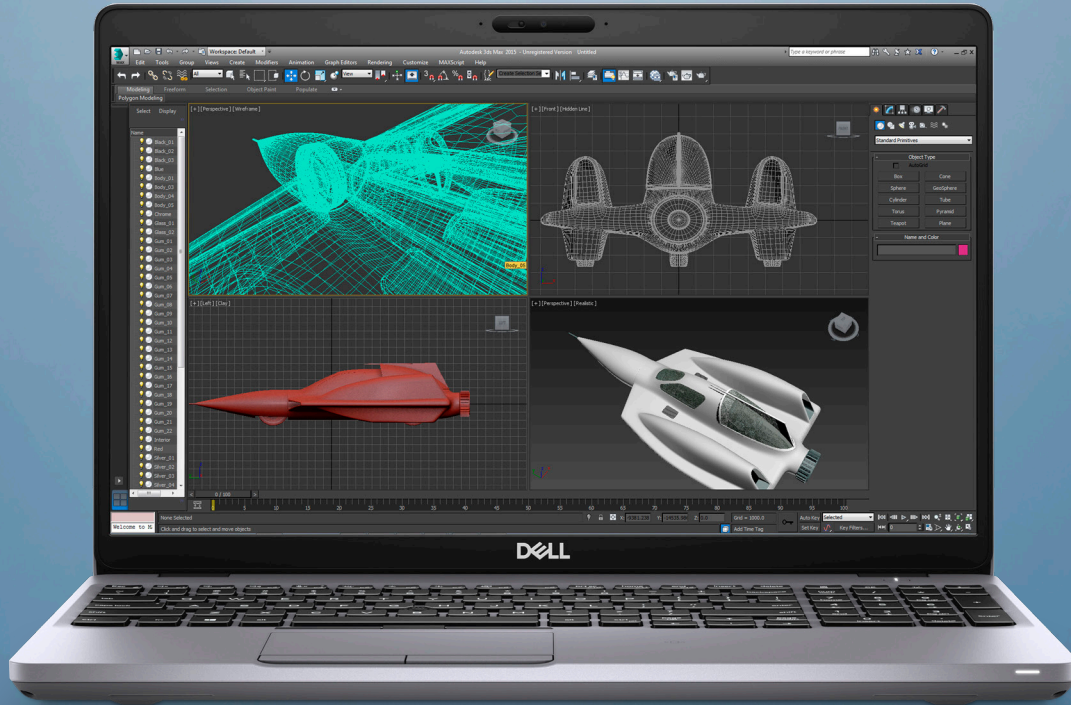


DELL Technologies

PRECISION 3551

Powerful and affordable



INTELLIGENT PERFORMANCE

Maximize your workstation performance with Dell Optimizer for Precision software and featured components including an Intel® Core™ (up to 8-cores on i9) or Xeon® processor, up to 64GB DDR4 memory (ECC optional) and NVIDIA Quadro™ professional graphics (4GB).



SMALL, BUT POWERFUL

This new mobile workstation is available in two colors, including a beautiful aluminum Titan Grey, and comes in at 4.35lbs. The 3551 is great for 2D and 3D CAD, as well as heavy Excel file users who need mobility. Also, Thunderbolt keeps you connected to all the accessories you need and keeps pace with your speed.



EXCEPTIONAL MOBILITY

Get an extremely long battery life with an optional 6-cell ExpressCharge battery, and up to 4TB (2x2TB) of storage for projects on the go.



PEACE OF MIND

Dell Optimizer for Precision is AI-based software that learns how you work and adapts to your style to create a smarter, more-personal experience. The result? Improved system responsiveness, better application performance, smarter use of battery power, reliable network connectivity and optimized storage. All from a single console that you manage from WorkspaceOne or Dell SCCM—allowing IT staff to deploy, configure, update, and monitor Optimizer remotely.

Recommended Accessories

PRECISION 3551

ON-THE-GO



DELL USB-C MOBILE ADAPTER DA300

Connect your Precision to almost any device with a convenient 6-in-1 compact adapter and collaborate from any location.



DELL TIMBUK2 AUTHORITY BACKPACK - 15"

Designed specifically for Dell, the Timbuk2-Authority backpack is built to carry and protect everything you need for the workday. The internal organizer provides ample space for laptop accessories and any extra items you need to carry.



JABRA EVOLVE 75

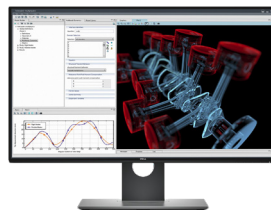
With the ambient noise cancellation feature of this wireless headset you can hear every word clearly on your next call.

AT THE DESK



DELL THUNDERBOLT DOCK | WD19TB

Work at full speed with Dell's powerful Thunderbolt Dock. Charge your system faster, support up to three 4K displays and connect to your peripherals via a single cable.



DELL ULTRASHARP 27 ULTRATHIN MONITOR | U2718Q

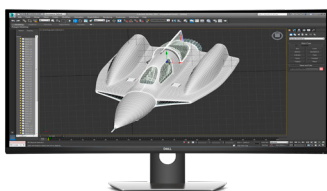
The world's first 27" 4K monitor with InfinityEdge that supports HDR content playback. See stunning colors and details on a virtually borderless display.



DELL PREMIER WIRELESS KEYBOARD AND MOUSE | KM717

Enhance productivity and enjoy its elegant design that will fit into virtually any workspace. For increased productivity you can simultaneously pair up to two compatible devices with Bluetooth LE.

CREATORS AND ENGINEERS



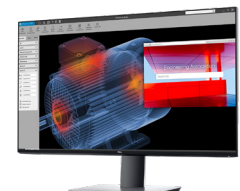
DELL ULTRASHARP 38 CURVED MONITOR | U3818DW

Enjoy expansive views, incredible visuals and improved multitasking with this 38-inch curved monitor with an InfinityEdge display.



3DCONNEXION SPACEMOUSE WIRELESS

3Dconnexion's patented 6-Degrees-of-Freedom (6DoF) sensor is specifically designed to manipulate digital content or camera positions in the industry-leading CAD applications. Simply push, pull, twist or tilt the 3Dconnexion controller cap to intuitively pan, zoom and rotate your 3D drawing.



DELL ULTRASHARP 32 4K MONITOR | U3219Q

Your images shine the way they were meant to on the world's first 31.5" 4K Ultra HD monitor with VESA certified DisplayHDR™ 400i featuring HDR content playback support.

Built for business

Dell Technologies Unified Workspace

Dell Technologies Unified Workspace is the most comprehensive solution to deploy, secure, manage and support virtually all devices from the cloud. We designed this revolutionary solution with intelligence and automation providing you with visibility across the entire endpoint environment. We help you save time, improve user experience, optimize resources and strengthen security.



DEPLOY

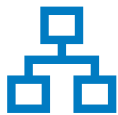
Our modern deployment solution, ProDeploy in the Unified Workspace allows you to revolutionize the way deployment gets done. By spending just one hour for set up, IT can then hand deployment to Dell and have preconfigured systems shipped directly to the end users--wherever they are.



SECURE

Dell Endpoint Security for the Unified Workspace helps you manage growing cyber risks while embracing workforce transformation. With Dell SafeGuard and Response powered by Secureworks, you gain actionable insight to help you quickly and efficiently prevent, detect and respond to cyber-attacks - keeping your environment free from harm.

The 3551 adds additional security features such as Intel® Platform Trust Technology, Trusted Platform Module (TPM) 2.0, Chassis lock slot support; Support for Computrace and SmartCard Reader; Fingerprint reader or FIPS Fingerprint reader (Check regional availability).



MANAGE

We integrated our hardware management solution Dell Client Command Suite with VMware Workspace ONE, allowing you to take advantage of unified endpoint management (UEM) and manage the firmware, operating system and applications for all devices from the Workspace ONE console. UEM simplifies the management of the entire environment saving IT time from having to work between separate consoles for PCs and phones.



SUPPORT

ProSupport Plus continues to be the only predictive and proactive support in the market. When compared to key competitors, ProSupport Plus with SupportAssist reduced time to resolve a failed hard drive with up to 11x faster time to resolution*

*Based on a Principled Technologies test report, "Spend Less Time and Effort Troubleshooting Laptop Hardware Failures" dated April 2018. Testing omitted by Dell, conducted in the United States. Actual results will vary. Full report: <http://facts.pt/L52XKM>

Features & Technical Specifications

PRECISION 3551

| Feature | Dell Precision 3551 Technical Specifications | Feature | Dell Precision 3551 Technical Specifications |
|-------------------------------|---------------------------------------------------------------------------------------------------------------------------------------------------------------------------------------------------------------------------------------------------------------------------------------------------------------------------------------------------------------------------------------------------------------------------------------------------------------------------------------------------------------------------------------------------------------------------------------------------------------------------------------------------------------------------|------------------------------------------------------------|------------------------------------------------------------------------------------------------------------------------------------------------------------------------------------------------------------------------------------------------------------------------------------------------------------------------------------------------------------------------------------------------------------------------------------------------------------------------------------------------------------------------------------------------------------------------------------------------------|
| Processor ¹ | Intel® Xeon W-10855M, 6 Core Xeon, 12M Cache, 2.80 GHz up to 5.1 GHz Turbo, 35W, vPro Intel® Core™ Processor i9-10885H, 8 Core, 16MB Cache, 2.40 GHz up to 5.3 GHz Turbo, 35W, vPro Intel® Core™ Processor i7-10875H, 8 Core, 16MB Cache, 2.30 GHz up to 5.1 GHz Turbo, 35W, vPro Intel® Core™ Processor i7-10850H, 6 Core, 12M Cache, 2.70 GHz up to 5.1 GHz Turbo, 35W, vPro Intel® Core™ Processor i7-10750H, 6 Core, 12M Cache, 2.60 GHz up to 5.0 GHz Turbo, 35W Intel® Core™ Processor i5-10400H, 4 Core, 8M Cache, 2.60 GHz up to 4.6 GHz Turbo, 35W, vPro Intel® Core™ Processor i5-10300H, 4 Core, 8M Cache, 2.50 GHz up to 4.5 GHz Turbo, 35W | I/O Ports and Connectors | 1 Thunderbolt Type C 3 USB 3.2 Gen 1 (1x power enabled) 1 HDMI 2.0 1 RJ-45 1 Headset jack 1 micro SD card reader 1 Smart Card reader (optional) 1 Fingerprint reader on power button (optional) |
| Operating System ² | Microsoft® Windows 10 Pro 64 bit Microsoft® Windows 10 Pro for Workstations 64 bit Microsoft® Windows 10 Home 64 bit Ubuntu 18.04 Red Hat 8.0 | Security ⁵ | Software Security SafeGuard and Response , powered by VMware Carbon Black and Secureworks provides modern security to prevent, detect and remediate advanced malware and cyber attacks. Suite of technologies include the following: Next Generation Antivirus (NGAV), Endpoint Detection and Response (EDR), Threat Detection and Response (TDR), Managed Endpoint Detection and Response, Incident Management Retainer, Emergency Incident Response SafeData protects information on device and in the cloud. |
| Memory ³ | 2 DIMM slots - up to 64GB 2933MHz, optional ECC | Hardware Security | SafeBIOS protects from threats that attack below-the-OS. Includes Dell Off-host BIOS Verification, BIOS Resilience, BIOS Recovery, and additional BIOS Controls. SafeID secures end user credentials with a dedicated security chip. Additional features include the following: Trusted Platform Module (TPM) 2.0 ⁷ , self-encrypting storage drives (Opal, FIPS), Smart card keyboard (FIPS). Physical Security Options: Chassis lock slot support, Chassis Intrusion Switch, Lockable Cable Covers, Supply chain tamper alerts (Check regional availability) |
| Graphics ³ | Integrated Intel® UHD 630 Graphics Nvidia Quadro P620 w/ 4GB GDDR5 | Dimensions | Width 14.14"/359.1mm x Depth 9.3"/236.2mm x Height .59"/14.99mm |
| Display Options | 15.6", HD, 1366 x 768, Anti-Glare, Non-touch, 45% Adobe RGB color gamut 15.6", FHD WVA, 1920 x 1080, Anti-Glare, Non-touch, 45% Adobe RGB color gamut 15.6", FHD WVA, 1920 x 1080, Anti-Glare, Non-touch, 100% sRGB color gamut w/ Premier Color 15.6", FHD WVA, 1920 x 1080, Anti-Glare, Touch, 45% Adobe RGB color gamut | Battery | 3 Cells, 51 Whr ExpressCharge™ Capable Battery 4 Cells, 68 Whr ExpressCharge™ Capable Battery 4 Cells, 68 Whr Long Life Battery (includes 3 year limited hardware warranty) 6 Cells, 97 Whr ExpressCharge™ Capable Battery |
| Storage Options ⁴ | 2 slots: 1x 2.5"HDD and M.2 SATA / PCIe 2.5"HDD: 500GB 7200RPM, 500GB 7200RPM SATA SED FIPS, 1TB 7200RPM, 2TB 5400RPM M.2 SATA: 256GB, 512GB M.2 PCIe, class 40: 128GB, 256GB, 256GB SED, 512GB, 512GB SED, 1TB, 1TB SED, 2TB M.2 PCIe, class 50: 512GB, 1TB | Weight⁶ | Starting at 4.16lbs, 1.89kg |
| Input | 10 Key keypad, Single pointing 10 Key keypad, Dual pointing Backlit, 10 Key keypad, Dual pointing | Power Adaptor | 90W 7mm-barrel AC Adaptor 130W AC Adaptor, USB Type-C |
| Communication Options | Wired: Integrated Intel I219LM 10/100/1000 Gigabit Ethernet Controller Wireless LAN & Bluetooth: Intel® Wi-Fi 6 AX201 2x2 .11ax 160MHz + Bluetooth 5.1 Intel® Wi-Fi 6 AX201 2x2 .11ax 160MHz (No Bluetooth) Qualcomm® QCA61x4A 802.11ac Dual Band (2x2) Wireless Adapter+ Bluetooth 4.2 Wireless WAN: Intel® XMM 7360 LTE-Advanced | Regulatory and Environmental Compliance⁷ | Energy Star / EPEAT Certified |
| Multimedia | Dual integrated high quality speakers and dual integrated noise cancelling digital array microphones MaxxAudio® Pro by Waves HD Camera IR camera | TAA Configurations available | YES (Check regional availability) |

DELL Technologies

PRECISION 3551

Our best price/performance mobile workstation.



Some options available only in select regions; ISV certification applies to select configurations:

1 Intel Turbo Boost mode only available on Xeon, Core i7 and Core i5 processors. Intel Integrated HD graphics only available with select processors.

2 A 64-bit operating system is required to support 4GB or more of system memory.

3 System memory may be used to support graphics, depending on system memory size and other factors.

4 Hard Drive capacity varies with preloaded material and will be less.

5 Computrace is not a Dell offer. Certain conditions apply. For full details, see terms and conditions at www.absolute.com/en/about/legal/agreements.

6 Weights vary depending on configuration and manufacturing variability.

7 See epeat.net for specific registration rating/status by country. For a complete listing of declarations & certifications, see Dell's regulatory & compliance homepage at dell.com/regulatory_compliance. Availability and terms of Dell Services vary by region. For more information, visit Dell.com/servicecontracts/global; Limited Hardware Warranty available by writing Dell USA LP, Attn: Warranties, One Dell Way, Round Rock, TX 78682 or see www.dell.com/warranty; Onsite Service after Remote Diagnosis: Remote Diagnosis is determination by online/phone technician of cause of issue; may involve customer access to inside of system and multiple or extended sessions. If issue is covered by Limited Hardware Warranty (www.dell.com/warranty) and not resolved remotely, technician and/or part will be dispatched, usually within 1 business day following completion of Remote Diagnosis. Availability varies. Other conditions apply.

Dell, EMC, and other trademarks are trademarks of Dell Inc. or its subsidiaries. Other trademarks may be trademarks of their respective owners. Intel and the Intel logo are trademarks of Intel Corporation in the U.S. and/or other countries. Microsoft and Windows are trademarks of Microsoft Corporation in the U.S. and/or other countries.