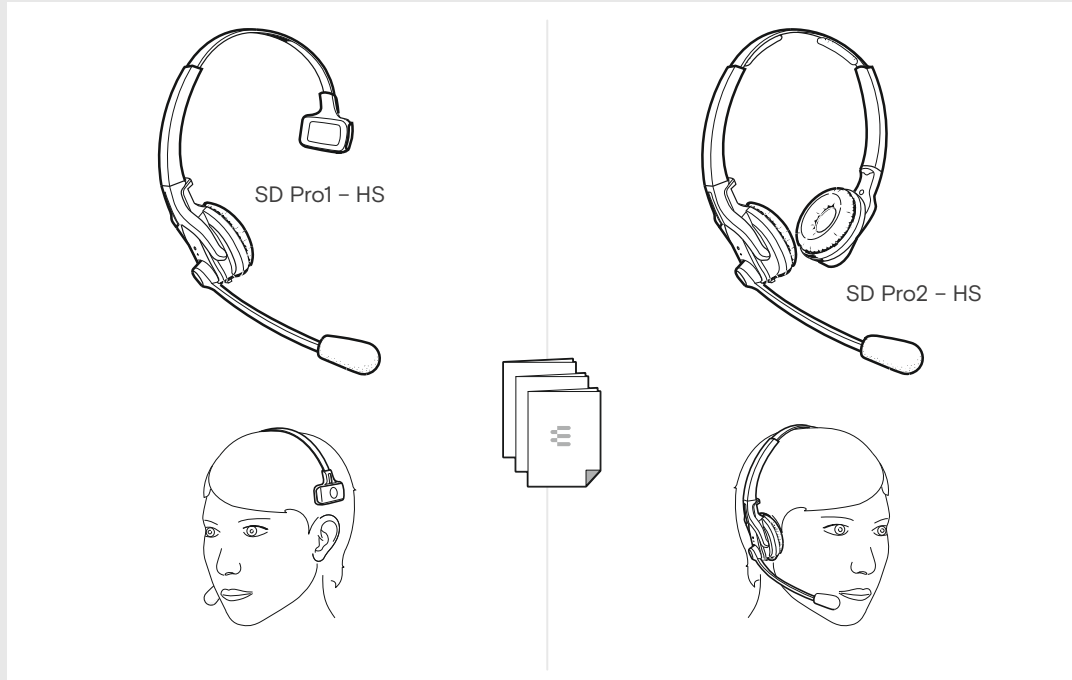


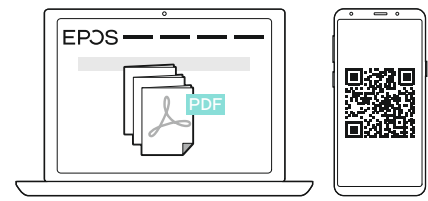
SD Series

SD Pro 1 headset | SD Pro 2 headset

EN Quick Guide ES Guía rápida  
 FR Guide express PT Guia Rápido



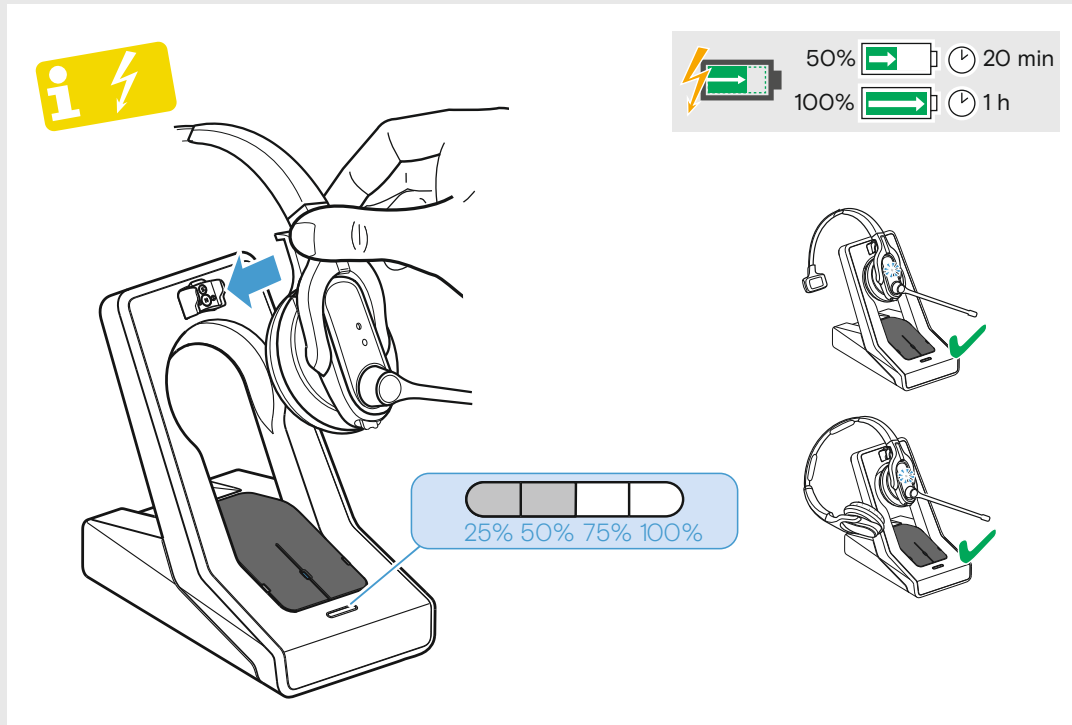
Charging the headset | Charger l'oreillette | Cargar el headset | Carregar os micro-auscultadores



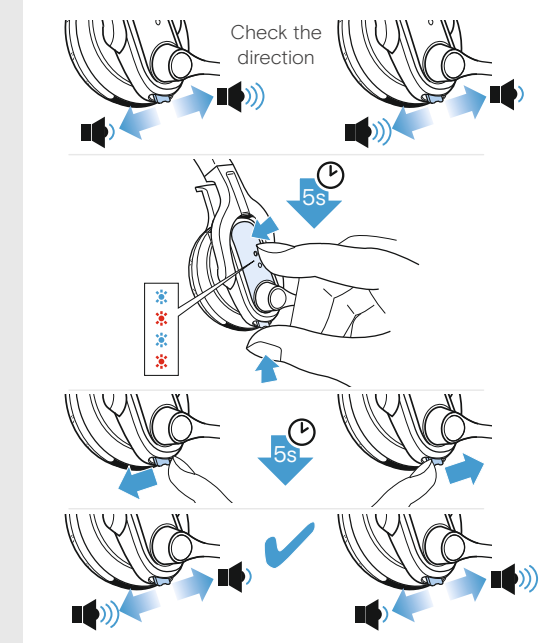
www.eposaudio.com/support

Sennheiser Communications A/S  
 Industriparken 27, DK-2750 Ballerup, Denmark  
 www.eposaudio.com

Printed in China, Publ. 11/19, 770-00079/A07

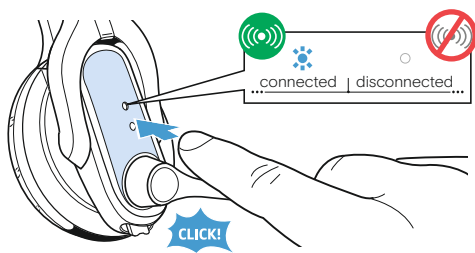


Swapping the direction of the volume buttons |  
 Permuter la fonction des touches Volume+ et Volume- |  
 Cambiar la asignación de las teclas de volumen |  
 Trocar a ocupação das teclas de volume



Using the headset | Utiliser l'oreillette | Utilizar el headset | Utilizar o auricular

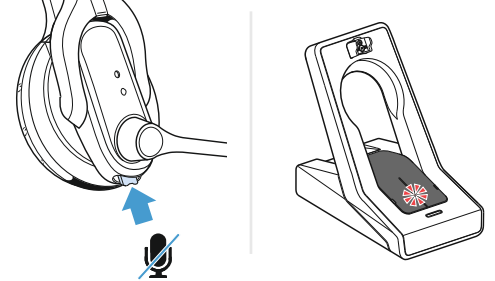
Connecting the headset and the base station



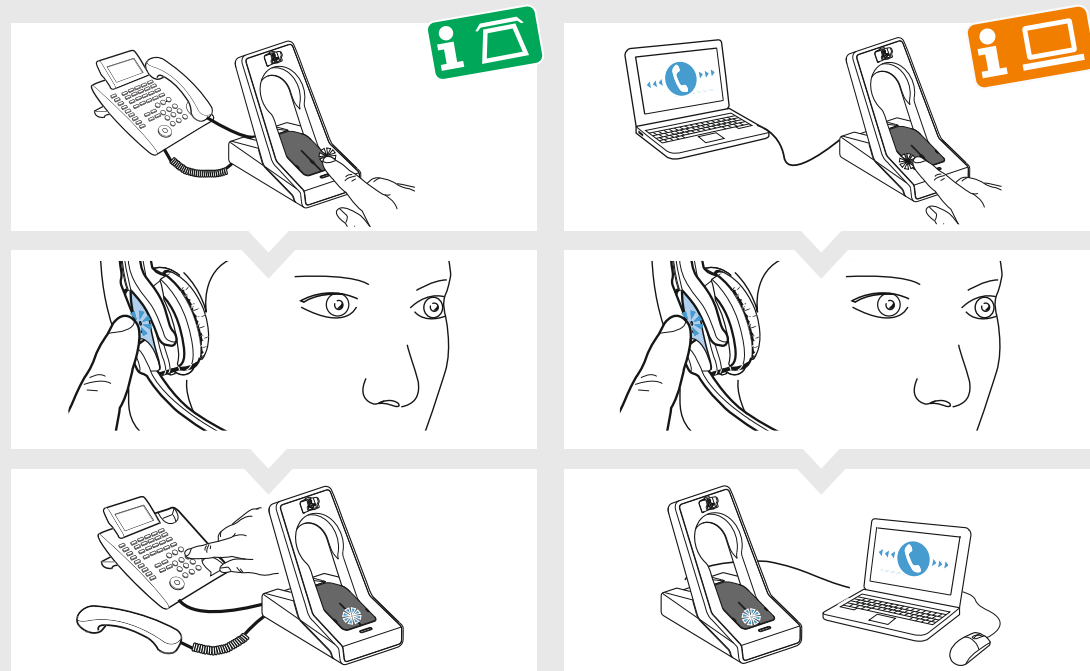
Volume



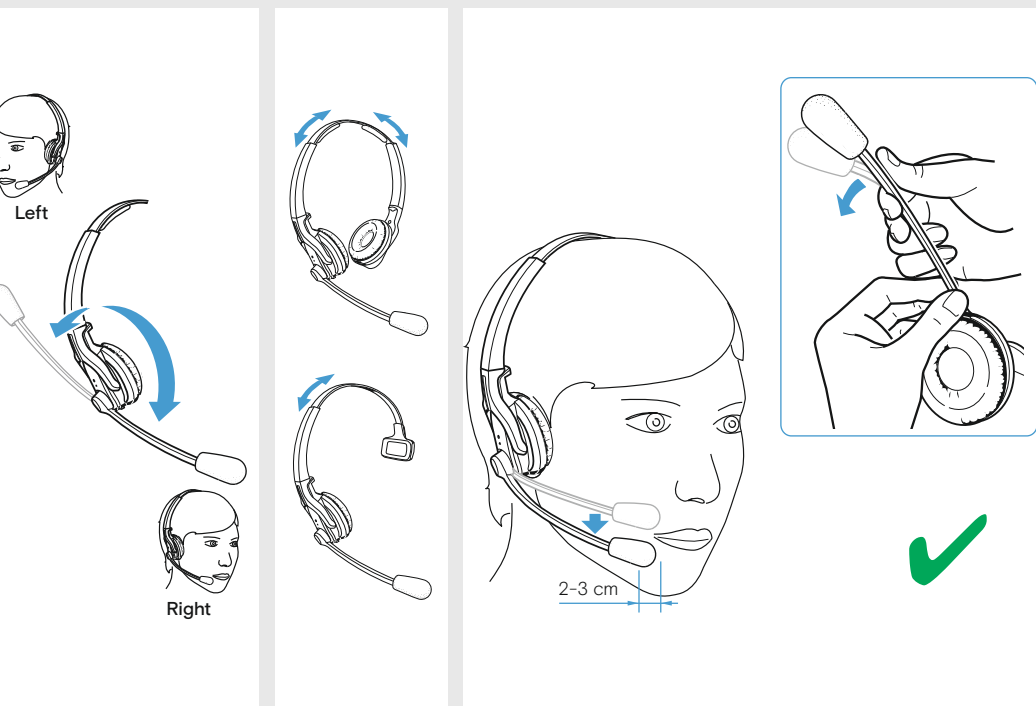
MUTE Mic



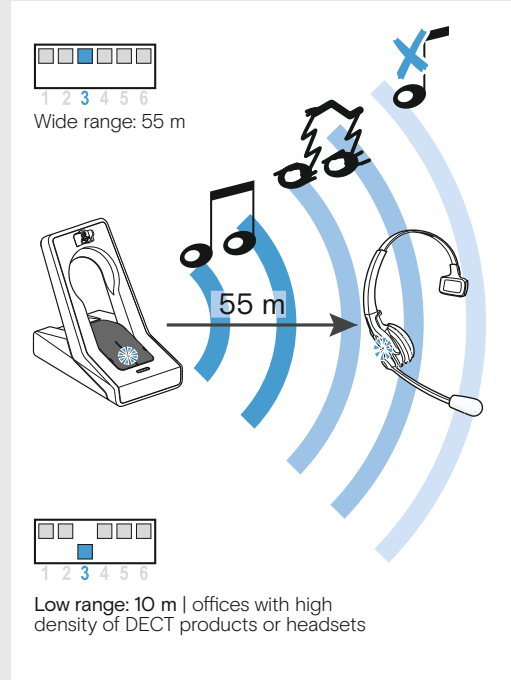
Making calls via the headset | Téléphoner avec l'oreillette | Telefonar mediante el headset |  
 Fazer uma chamada telefónica através do micro-auscultador



Wearing the headset | Porter l'oreillette | Utilizar el headset | Utilizar o microauscultador



Leaving the DECT range | Sortir de la portée DECT | Salir del rango DECT | Sair do alcance DECT



Automatic link establishment |  
 Établissement automatique d'une liaison |  
 Establecimiento de conexión automática |  
 Ligaçao automática

