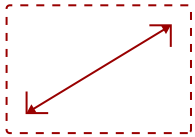


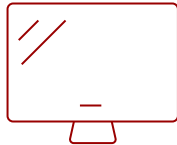
VG2458 - 24" 1080P IPS ERGONOMIC DOCKING MONITOR | 100W USB-C, RJ45, DAISY CHAIN

## Key Features

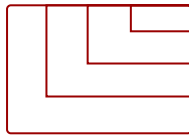
---



24  
DISPLAY



IPS-Type  
PANEL



1920 x 1080p  
RESOLUTION



## Product Description

---

Elevate your workspace with ViewSonic's VG2458 docking monitor, designed for seamless connectivity, engineered to streamline your setup with daisy chaining via USB-C. Say goodbye to costly docking stations and cable clutter —our sleek, docking monitor allows you to connect multiple screens with a single cable, delivering stunning visuals while charging your devices simultaneously. Future-ready and versatile, the VG2458 offers a range of connectivity including USB-C with 100W of power delivery, HDMI, DisplayPort, and a 5-port USB hub with a mix of USB-A and USB-C ports to connect peripherals. With full ergonomic adjustability, VG2458 will enhance productivity and comfort, making it the ultimate upgrade for any modern workspace.

## Specifications

---

<b>UPC</b>	766907027945
<b>Screen Size</b>	24
<b>Viewable Area (in.)</b>	23.8
<b>Panel Type</b>	IPS-Type
<b>Display Resolution</b>	1920 x 1080
<b>Display Resolution</b>	Full HD (1920x1080)
<b>Static Contrast Ratio</b>	1,500:1
<b>Dynamic Contrast Ratio</b>	80,000,000:1
<b>Light Source</b>	LED
<b>Brightness</b>	350 cd/m2
<b>Colors</b>	16.7M
<b>Color Space Support</b>	8 bit (6 bit + Hi-FRC)
<b>Aspect Ratio</b>	16:9
<b>Response Time (Typical GTG)</b>	5ms
<b>Viewing Angles</b>	178° horizontal, 178° vertical
<b>Backlight Life (Hours)</b>	30,000
<b>Panel Surface</b>	Anti-Glare type, Hard-coating (3H), Haze 25%
<b>Refresh Rate</b>	100Hz
<b>PC Resolution (max)</b>	1920 x 1080p
<b>Mac® Resolution (max)</b>	1920 x 1080p
<b>USB Type A</b>	3
<b>3.5mm Audio Out</b>	1
<b>Ethernet LAN (RJ45)</b>	1
<b>HDMI 1.4 In</b>	1
<b>DisplayPort</b>	1
<b>Internal Speakers</b>	2W (x2)
<b>Eco Mode (Conserve)</b>	131
<b>Eco Mode (optimized)</b>	133
<b>Consumption (typical)</b>	138
<b>Consumption (max)</b>	221
<b>Voltage</b>	100-240 VAC, 50-60Hz
<b>Stand-by</b>	0.5
<b>Power Supply</b>	Internal
<b>Cable Organization</b>	Yes
<b>Kensington Lock Slot</b>	1
<b>Physical Controls</b>	Joystick key: Up, Right, Down, Left, Center; Power

<b>On Screen Display</b>	Input Select, Audio Adjust, ViewMode, Color Adjust, Manual Image Adjust, Setup Menu
<b>Temperature</b>	32-104° F (0 - 40° C)
<b>Humidity (non-condensing)</b>	20-90%
<b>VESA Compatible</b>	100 x 100 mm
<b>Frequency Horizontal</b>	30 ~ 110 KHz
<b>Frequency Vertical</b>	50 ~ 100 Hz
<b>Height Adjust</b>	150 mm / 5.9 in
<b>Swivel</b>	90°
<b>Pivot (Right/Left)</b>	90° / 90°
<b>Tilt (Forward/Back)</b>	5° / 30°
<b>Regulations</b>	cTUVus, FCC-B, ICES003, Energy Star, EPEAT, CEC
<b>Net (lbs)</b>	13.6
<b>Net Without Stand (lbs)</b>	8.6
<b>Gross (lbs)</b>	18
<b>Net (kg)</b>	6.2
<b>Net Without Stand (kg)</b>	3.9
<b>Gross (kg)</b>	8.2
<b>Packaging (in.)</b>	23.6W x 16.1H x 5.6D
<b>Physical (in.)</b>	21.21 W x 15.84 ~ 19.89H x 8.08D
<b>Physical Without Stand (in.)</b>	21.21 W x 12.5H x 1.76D
<b>Packaging (mm)</b>	600W x 410H x 143D
<b>Physical (mm)</b>	538.8W x 402.32~505.22H x 205.27D
<b>Physical Without Stand (mm)</b>	538.8W x 317.51H x 44.75D
<b>Package Contents</b>	LCD Display, Power Cable, DisplayPort Cable, USB Type-C Cable (with USB Type A adaptor), Quick Start Guide
<b>Recycle/Disposal</b>	Please dispose of in accordance with local, state or federal laws.
<b>Warranty</b>	Three-year limited warranty on parts, labor and backlight

UPC: 766907027945



**Contact Sales**  
[ViewSonic.com](http://ViewSonic.com)

888.881.8781  
 email:  
[salesinfo@viewsonic.com](mailto:salesinfo@viewsonic.com)