

USB 3.0 to DVI External Video Card

USB32DVIPRO



WARNING! Please ensure that the latest drivers from the StarTech.com website are installed before plugging in the USB 3.0 Video Adapter

*actual product may vary from photos

DE: Bedienungsanleitung - de.startech.com

FR: Guide de l'utilisateur - fr.startech.com

ES: Guía del usuario - es.startech.com

IT: Guida per l'uso - it.startech.com

NL: Gebruiksaanwijzing - nl.startech.com

PT: Guia do usuário - pt.startech.com

For the most up-to-date information, please visit: www.startech.com

FCC Compliance Statement

This equipment has been tested and found to comply with the limits for a Class B digital device, pursuant to part 15 of the FCC Rules. These limits are designed to provide reasonable protection against harmful interference in a residential installation. This equipment generates, uses and can radiate radio frequency energy and, if not installed and used in accordance with the instructions, may cause harmful interference to radio communications. However, there is no guarantee that interference will not occur in a particular installation. If this equipment does cause harmful interference to radio or television reception, which can be determined by turning the equipment off and on, the user is encouraged to try to correct the interference by one or more of the following measures:

- Reorient or relocate the receiving antenna.
- Increase the separation between the equipment and receiver.
- Connect the equipment into an outlet on a circuit different from that to which the receiver is connected.
- Consult the dealer or an experienced radio/TV technician for help.

Use of Trademarks, Registered Trademarks, and other Protected Names and Symbols

This manual may make reference to trademarks, registered trademarks, and other protected names and/or symbols of third-party companies not related in any way to StarTech.com. Where they occur these references are for illustrative purposes only and do not represent an endorsement of a product or service by StarTech.com, or an endorsement of the product(s) to which this manual applies by the third-party company in question. Regardless of any direct acknowledgement elsewhere in the body of this document, StarTech.com hereby acknowledges that all trademarks, registered trademarks, service marks, and other protected names and/or symbols contained in this manual and related documents are the property of their respective holders.

Table of Contents

Introduction	1
Packaging Contents	1
System Requirements.....	1
Installation	2
Windows Vista/ 7	2
How to Use	3
Display Modes.....	4
Specifications	7
Technical Support	8
Warranty Information	8

Introduction

The USB32DVIPRO USB 3.0 to DVI Adapter turns an available USB 3.0 port into a DVI output, with high resolution 2048x1152 video support - a convenient external video solution that makes it easy to add multi-monitor capability to a USB 3.0-enabled desktop or laptop computer (optimal performance from USB 3.0, backward compatible with USB 2.0).

Leveraging the high-bandwidth (5 Gbps) SuperSpeed USB 3.0 interface, the adapter functions as a external graphics card to deliver smooth, high-resolution content to your DVI or VGA-capable display (DVI to VGA Adapter included). The adapter can be used to mirror your primary desktop, showing the same image on each display, or to extend your desktop to double your workspace and increase your productivity.

Packaging Contents

- 1 x USB 3.0 to DVI Video Adapter
- 1 x DVI to VGA Adapter
- 1 x Driver/Software CD
- 1 x Instruction Manual

System Requirements

- USB enabled computer system with available USB port (USB 3.0 recommended)
- DVI or VGA enabled display device (e.g. monitor, projector, HTDV, etc)
- 1~2 Video Adapter:
 - CPU:** Intel® Core™2 Duo 2.0 GHz or better (Intel® Core™ i5 Quad Core 2.4 GHz or better recommended for video playback)
 - RAM:** 2 GB or more (4 GB recommended for video playback)
- 3~4 Video Adapters:
 - CPU:** Intel® Core™ i5 Quad Core 2.8 GHz or better
 - RAM:** 4 GB or more
- 5 Video Adapters:
 - CPU:** Intel® Core™ i5 Quad Core 3.0 GHz or better
 - RAM:** 8 GB or more
- Microsoft® Windows® Vista/ 7 (32/64-bit)

Installation

NOTE: Please ensure that the driver installation is complete prior to the physical installation (plugging in) of the USB 3.0 Video Adapter

Windows Vista/ 7

1. Insert the Driver CD (included) into the computer's CD/ DVD drive.
2. Browse through the Driver CD and locate the "Setup.exe" file. Double-click on the "Setup.exe" file to begin the installation process:
3. When the End User License Agreement appears, please read and accept it, then click Next.



Setup.exe



*screenshots for reference only

4. Please wait while the installation package copies the necessary files.
5. Once completed, connect the USB 3.0 Video Adapter to the computer. Windows should start to automatically load the drivers. Once complete, you should see this icon in your System Tray:



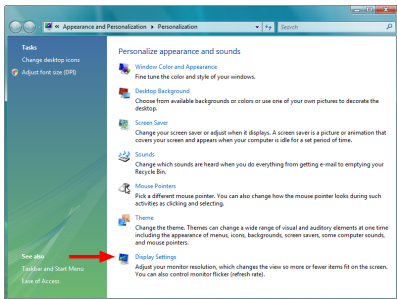
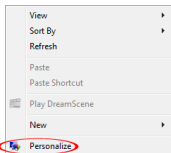
6. To verify the installation, right-click on "My Computer" and select Manage to open the Computer Management window.
7. In the left pane of the Computer Management window, click on Device Manager.
8. In the right pane of the Computer Management window, click on USB 3.0 Display Adapters, and ensure that the device is listed underneath.
9. If you wish to add additional USB 3.0 Video Adapters, simply plug them into available USB 3.0 ports. A maximum total of five (5) USB Video Adapters can be used on a single Windows computer.
10. Connect the monitor(s) to the USB Video Adapter(s) using DVI-D (digital) cables or VGA cables using the included DVI to VGA adapter.

How to Use

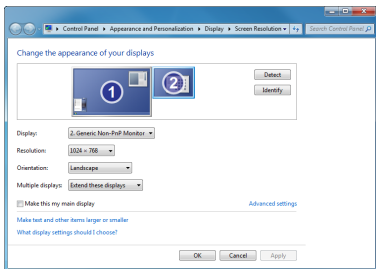
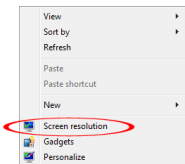
Configuring the image being displayed by the monitor that is connected to the USB 3.0 Video Adapter, can be done in one of two ways:

1. Accessing the Windows Display Settings

- **Windows Vista:** right-click on a blank area of the desktop, select **Personalize**, then select the **Display Settings** option.

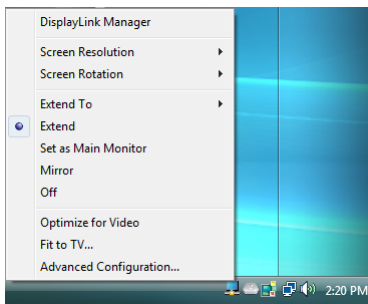


- **Windows 7:** right-click on a blank area of the desktop, select **Screen Resolution**.

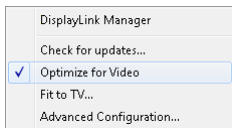


2. Right-clicking the DisplayLink tray icon (🖥️) in the system notification area.

NOTE: In Windows Vista, changes can be made directly from the DisplayLink icon, however in Windows 7, the DisplayLink icon automatically takes you to the Windows Display Settings, where the same settings are available.



Windows Vista



Windows 7

Display Modes

“Extend” DISPLAY MODE (DEFAULT)

A default display mode; this feature allows the attached USB 3.0 Video Adapter enabled display to work as an “Extended” display to the on-board display. The extended working space improves work efficiency.

You may change the relative position of this extended display through the Windows Display Settings or the “Extend To” option in the DisplayLink icon menu.

“Mirror” DISPLAY MODE

This feature allows the same content from the on-board display to be duplicated (mirroring) to the USB 3.0 Video Adapter enabled display.

The screen resolution setting on the USB 3.0 Video Adapter enabled device will match the on-board displays’s resolution. For example, if the on-board displays resolution is 1024 x 768*32-bit, then the USB 3.0 Video Adapter will use the same resolution.

“Set as Main Monitor” DISPLAY MODE

A unique feature to allow the USB 3.0 Video Adapter to act as the main working display. The USB 3.0 Video Adapter will work as the main graphics adapter on the system, while the on-board display will work as the extended display.

Please be advised that some display utilities and drivers that shipped with certain AGP and built-in display adapters may prevent this option from working on some systems. You may be able to disable the other utility program (usually found in the same toolbar located on the bottom right hand corner) to make this function work properly.

“Off” DISPLAY MODE

This option disables the video output from the USB 3.0 Video Adapter.

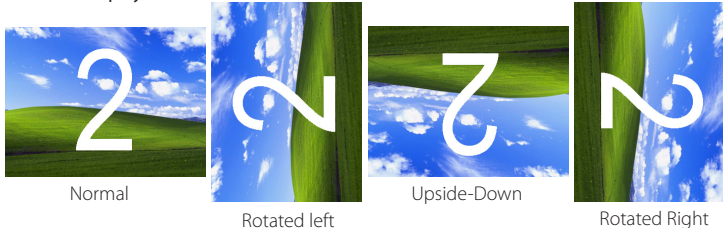
Display Resolution

Select the desired video display resolution for the connected monitor in Extend Mode.

The default setting resolution is: 1024 x 768 * 32-bit.

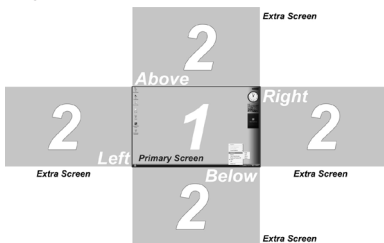
Display Rotation

4 options are available: 0° (**Normal**), 90° (**Left**), 180° (**Upside-Down**), 270° (**Right**) when used with the Extended or Primary display modes. It is a useful function for some rotatable display devices.



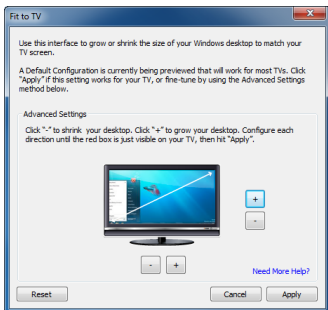
Extend to

When using the “Extend” display mode, 4 options are available for placement of the extended display, relative to the primary display: **Left**, **Right**, **Above**, **Below**. More fine adjustments to the placement of the extended display can be made through the Windows Display Settings.



Fit to TV

When using “Extend” mode, if the image displayed on the remote display is not properly centered, then this option can be used to manually adjust the position of the image. Using the + and - buttons will adjust the image horizontally or vertically, and holding the CTRL key while pressing the + and - buttons will allow for smaller adjustments.



Specifications

Video Signal	DVI (digital)/VGA (RGBHV)
Host Interface	USB 3.0
External Connectors	1 x 29-pin DVI-I female 1 x USB 3.0 type A male
LEDs	None
Maximum Video Resolution	2048 x 1152
Onboard Video Memory	512 MB DDR2
Maximum Number of Adapters	5
Power Adapter	USB powered
Enclosure Material	Plastic
Operating Temperature	10°C ~ 40°C (50°F ~ 104°F)
Storage Temperature	-10°C ~ 80°C (14°F ~ 167°F)
Humidity	<85% RH
Dimensions (LxWxH)	78.0mm x 43.5mm x 15.5mm
Weight	300g
Compatible Operating Systems	Windows Vista/ 7 (32/ 64-bit),

Technical Support

StarTech.com's lifetime technical support is an integral part of our commitment to provide industry-leading solutions. If you ever need help with your product, visit www.startech.com/support and access our comprehensive selection of online tools, documentation, and downloads.

For the latest drivers/software, please visit www.startech.com/downloads

Warranty Information

This product is backed by a two year warranty.

In addition, StarTech.com warrants its products against defects in materials and workmanship for the periods noted, following the initial date of purchase. During this period, the products may be returned for repair, or replacement with equivalent products at our discretion. The warranty covers parts and labor costs only. StarTech.com does not warrant its products from defects or damages arising from misuse, abuse, alteration, or normal wear and tear.

Limitation of Liability

In no event shall the liability of StarTech.com Ltd. and StarTech.com USA LLP (or their officers, directors, employees or agents) for any damages (whether direct or indirect, special, punitive, incidental, consequential, or otherwise), loss of profits, loss of business, or any pecuniary loss, arising out of or related to the use of the product exceed the actual price paid for the product. Some states do not allow the exclusion or limitation of incidental or consequential damages. If such laws apply, the limitations or exclusions contained in this statement may not apply to you.

Hard-to-find made easy. At StarTech.com, that isn't a slogan. It's a promise.

StarTech.com is your one-stop source for every connectivity part you need. From the latest technology to legacy products — and all the parts that bridge the old and new — we can help you find the parts that connect your solutions.

We make it easy to locate the parts, and we quickly deliver them wherever they need to go. Just talk to one of our tech advisors or visit our website. You'll be connected to the products you need in no time.

Visit www.startech.com for complete information on all StarTech.com products and to access exclusive resources and time-saving tools.

StarTech.com is an ISO 9001 Registered manufacturer of connectivity and technology parts. StarTech.com was founded in 1985 and has operations in the United States, Canada, the United Kingdom and Taiwan servicing a worldwide market.