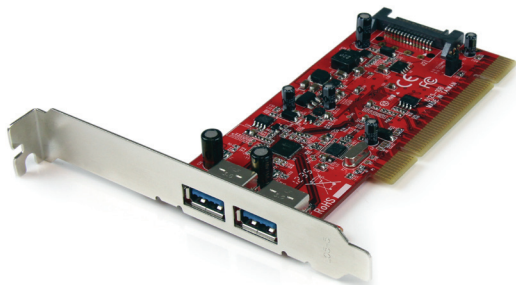


## PCI Superspeed USB 3.0 Cards

PCIUSB3S22

PCIUSB3S4



\*PCIUSB3S22 Shown

DE: Bedienungsanleitung - [de.startech.com](http://de.startech.com)

FR: Guide de l'utilisateur - [fr.startech.com](http://fr.startech.com)

ES: Guía del usuario - [es.startech.com](http://es.startech.com)

IT: Guida per l'uso - [it.startech.com](http://it.startech.com)

NL: Gebruiksaanwijzing - [nl.startech.com](http://nl.startech.com)

PT: Guia do usuário - [pt.startech.com](http://pt.startech.com)

For the most up-to-date information, please visit: [www.startech.com](http://www.startech.com)

## FCC Compliance Statement

This equipment has been tested and found to comply with the limits for a Class B digital device, pursuant to part 15 of the FCC Rules. These limits are designed to provide reasonable protection against harmful interference in a residential installation. This equipment generates, uses and can radiate radio frequency energy and, if not installed and used in accordance with the instructions, may cause harmful interference to radio communications. However, there is no guarantee that interference will not occur in a particular installation. If this equipment does cause harmful interference to radio or television reception, which can be determined by turning the equipment off and on, the user is encouraged to try to correct the interference by one or more of the following measures:

- Reorient or relocate the receiving antenna.
- Increase the separation between the equipment and receiver.
- Connect the equipment into an outlet on a circuit different from that to which the receiver is connected.
- Consult the dealer or an experienced radio/TV technician for help.

## Use of Trademarks, Registered Trademarks, and other Protected Names and Symbols

This manual may make reference to trademarks, registered trademarks, and other protected names and/or symbols of third-party companies not related in any way to StarTech.com. Where they occur these references are for illustrative purposes only and do not represent an endorsement of a product or service by StarTech.com, or an endorsement of the product(s) to which this manual applies by the third-party company in question. Regardless of any direct acknowledgement elsewhere in the body of this document, StarTech.com hereby acknowledges that all trademarks, registered trademarks, service marks, and other protected names and/or symbols contained in this manual and related documents are the property of their respective holders.

# Table of Contents

<b>Introduction</b> .....	<b>1</b>
Packaging Contents .....	1
System Requirements.....	1
PCIUSB3S22.....	2
PCIUSB3S4 .....	2
<b>Installation</b> .....	<b>3</b>
Hardware Installation .....	3
<b>Driver Installation</b> .....	<b>4</b>
Verifying Installation.....	5
<b>Specifications</b> .....	<b>6</b>
<b>Technical Support</b> .....	<b>7</b>
<b>Warranty Information</b> .....	<b>7</b>

# Introduction

The PCIUSB3S22/PCIUSB3S4 2/4-Port PCI to SuperSpeed USB 3.0 Card, with SATA power, allows for legacy PCI slots to support the USB 3.0 standard, which is capable of data transfer rates up to 5 Gbps (10x faster than USB 2.0). Using USB 3.0 devices with this card will increase data transfers, with up to 1.3 Gbps of available bandwidth (PCI bus limit), more than double the performance versus USB 2.0. With optional power connectors, each USB port can provide up to 900mA of power to connected USB 3.0 devices, ensuring sufficient power for the most power hungry devices. Backward compatible with USB 2.0 and 1.x devices, this versatile PCI USB 3.0 card will work with any future USB 3.0 devices, while still being able to support older devices. Designed for older PCI-based systems or computers with only PCI expansion slots left available, this adapter card allows those systems to stay relevant and up-to-date with the latest USB technology. Backed by a StarTech.com lifetime warranty and free lifetime technical support.

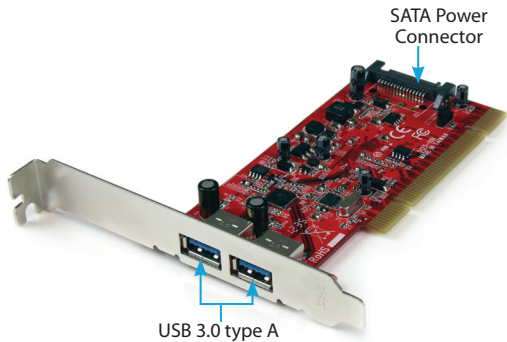
## Packaging Contents

- 1x PCI USB 3.0 Card
- 1x Low Profile Bracket
- 1x Driver CD
- 1x Instruction Manual

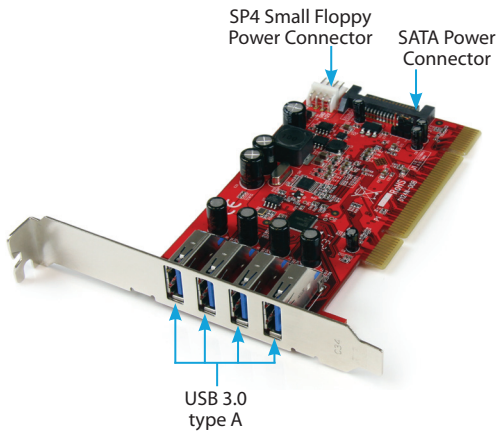
## System Requirements

- Available PCI card expansion slot (32-bit, 33 MHz compatible)
- **OPTIONAL:** Available SATA power or SP4 Floppy (PCIUSB3S4 only) power connector from computer power supply
- Microsoft® Windows® XP (32/64-bit)/ Server 2003 (32/64-bit)/ Server 2008 R2/ Vista (32/64-bit)/ 7 (32/64-bit)/ 8 (32/64-bit)

## PCIUSB3S22



## PCIUSB3S4



# Installation

**WARNING!** PCI cards, like all computer equipment, can be severely damaged by static electricity. Be sure that you are properly grounded before opening your computer case or touching your PCI card. StarTech.com recommends that you wear an anti-static strap when installing any computer component. If an anti-static strap is unavailable, discharge yourself of any static electricity build-up by touching a large grounded metal surface (such as the computer case) for several seconds. Also be careful to handle the PCI card by its edges and not the gold connectors.

## Hardware Installation

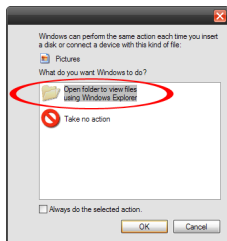
1. Turn your computer off and any peripherals connected to the computer (i.e. Printers, external hard drives, etc.). Unplug the power cable from the rear of the power supply on the back of the computer and disconnect all peripheral devices.
2. Remove the cover from the computer case (see documentation for your computer system for details).
3. Locate an open PCI slot and remove the metal cover plate on the rear of the computer case (refer to documentation for your computer system for details).

**NOTE:** If installing the card into a small form factor/low profile system, replacing the pre-installed full profile bracket with the included low profile installation bracket may be necessary.

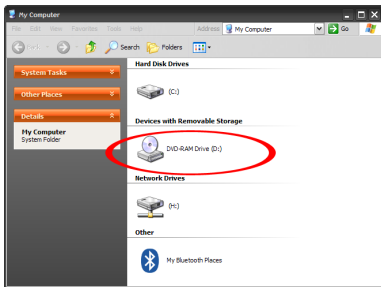
4. Gently insert the card into the open PCI slot and fasten the bracket to the rear of the case.
5. **OPTIONAL:** Connect SATA power or SP4 Floppy (PCIUSB3S4 only) power connector from the computer power supply to the card. This is recommended to ensure enough power can be supplied to high-powered USB devices.
6. Place the cover back onto the computer case.
7. Insert the power cable into the socket on the power supply and reconnect all other connectors removed in Step 1.

# Driver Installation

1. Once the computer has started and the operating system is fully loaded, insert the provided Driver CD into the computer's CD/DVD drive.
2. Autorun should give you the option to browse the files on the CD or automatically open the CD.



If Autorun does not start, go into "My Computer" or "Computer" and access the CD/DVD drive that the CD is in.

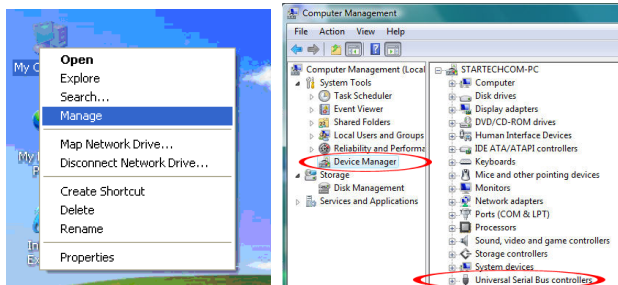


3. Go into the folder "USB 3.0" and double-click the "setup.exe" file. Follow the onscreen instructions to complete the driver installation.

# Verifying Installation

## Windows XP/Server 2003/Vista/7/8

From the main desktop, right-click on “My Computer” (“Computer” in Vista/7), then select Manage. In the new Computer Management window, select Device Manager from the left window panel.



In the Device Manager, under the Universal Serial Bus Controllers category, you should see the new entries for the USB 3.0 controller card.



# Specifications

	PCIUSB3S22	PCIUSB3S4
<b>Number of Ports</b>	2	4
<b>Host Interface</b>	USB 3.0 revision 1.0	
<b>Form Factor</b>	Low/Full Profile	
<b>Chipset ID</b>	NEC uPD720202	
<b>External Connectors</b>	2 x USB 3.0 type A female	3 x USB 3.0 type A female
<b>Internal Connectors</b>	1 x SATA power (15-pin) male	1 x SP4 small Floppy Power Connector 1 x SATA power (15-pin) male
<b>Maximum Data Transfer Rate</b>	USB 3.0: 5 Gbps	
<b>Operating Temperature</b>	5°C ~ 50°C (41°F ~ 122°F)	
<b>Storage Temperature</b>	-25°C ~ 70°C (-13°F ~ 158°F)	
<b>Humidity</b>	20% ~ 80% RH	
<b>Dimensions (LxWxH)</b>	65.0mm x 60.0mm x 22.0mm	90.0mm x 70.0mm x 22.0mm
<b>Weight</b>	56g	60g
<b>Compatible Operating Systems</b>	Windows XP/ Server 2003/ Vista/ Server 2008 R2/ 7 / 8 (32/64-bit)	

# Technical Support

StarTech.com's lifetime technical support is an integral part of our commitment to provide industry-leading solutions. If you ever need help with your product, visit [www.startech.com/support](http://www.startech.com/support) and access our comprehensive selection of online tools, documentation, and downloads.

For the latest drivers/software, please visit [www.startech.com/downloads](http://www.startech.com/downloads)

## Warranty Information

This product is backed by a lifetime warranty.

In addition, StarTech.com warrants its products against defects in materials and workmanship for the periods noted, following the initial date of purchase. During this period, the products may be returned for repair, or replacement with equivalent products at our discretion. The warranty covers parts and labor costs only. StarTech.com does not warrant its products from defects or damages arising from misuse, abuse, alteration, or normal wear and tear.

### Limitation of Liability

In no event shall the liability of StarTech.com Ltd. and StarTech.com USA LLP (or their officers, directors, employees or agents) for any damages (whether direct or indirect, special, punitive, incidental, consequential, or otherwise), loss of profits, loss of business, or any pecuniary loss, arising out of or related to the use of the product exceed the actual price paid for the product. Some states do not allow the exclusion or limitation of incidental or consequential damages. If such laws apply, the limitations or exclusions contained in this statement may not apply to you.

Hard-to-find made easy. At StarTech.com, that isn't a slogan. It's a promise.

StarTech.com is your one-stop source for every connectivity part you need. From the latest technology to legacy products — and all the parts that bridge the old and new — we can help you find the parts that connect your solutions.

We make it easy to locate the parts, and we quickly deliver them wherever they need to go. Just talk to one of our tech advisors or visit our website. You'll be connected to the products you need in no time.

Visit [www.startech.com](http://www.startech.com) for complete information on all StarTech.com products and to access exclusive resources and time-saving tools.

*StarTech.com is an ISO 9001 Registered manufacturer of connectivity and technology parts. StarTech.com was founded in 1985 and has operations in the United States, Canada, the United Kingdom and Taiwan servicing a worldwide market.*