

DATA SHEET

MOBILITY CONTROLLER VIRTUAL APPLIANCE

The functionality of a hardware controller in a cost-effective virtualized environment

OVERVIEW

Aruba Mobility Controller Virtual Appliances (VMCs) offer the option to deploy Mobility Controllers in virtualized environments. VMCs offer the same functionality as the 7000 Series and 7200 Series Mobility Controller hardware.

Running the same ArubaOS network operating system as a 7000 Series or 7200 Series Mobility Controller, the VMC can enforce centrally-managed policies to ensure a consistent employee and guest experience. It can also be deployed with Zero Touch Provisioning (ZTP) to simplify deployment.

The VMC can manage up to 16,000 concurrent users and 1,000 access points, and can be installed on VMware ESXi, Microsoft Hyper-V and open-source KVM instances. As campus and branch requirements change, additional VMCs, memory and compute resources can be added.

24/7 MISSION-CRITICAL NETWORKING

ArubaOS includes unique, and patented AI-powered machine learning Adaptive Radio Management features, such as [AirMatch](#) and [ClientMatch](#) (now enhanced with 802.11ax grouping) for automatic RF optimization. These features improve the network's performance based on changing environmental conditions, noisy or congested RF and resolve sticky client issues during user roaming. [RFProtect](#) provides advanced spectrum analysis and wireless intrusion protection (WIPS/WIDS) to help identify and mitigate Wi-Fi and non-Wi-Fi sources of interference to contain potential security risks. Learn more about Aruba's software features on the [ArubaOS](#) datasheet.

As part of a controller cluster managed by the Mobility Master, the VMC helps enhance scale, improves reliability using enhanced High Availability (HA), adopts configurations seamlessly based on hierarchy, enables Live Upgrades to reduce maintenance windows, and shares licenses from a global licensing pool. For network management, Aruba [AirWave](#) provides real-time monitoring, reporting and Wi-Fi location services.

KEY FEATURES

- Support for new 802.11ax (Wi-Fi 6), WPA3 and Enhanced Open – and existing standards
- Patented ClientMatch technology can now group together 802.11ax-capable devices
- Application awareness for 2,600+ applications with no additional hardware
- Built in AI-powered wireless/RF optimization
- Unifies policy enforcement for WLAN, LAN and WAN traffic

ENHANCED CAPABILITIES:

802.11ax (Wi-Fi 6) enhanced with ClientMatch

The latest Wi-Fi standard brings enhanced performance, speed, and efficiency with key features such as OFDMA, 1024-QAM, and bi-directional MU-MIMO. Combined with Aruba's patented ClientMatch technology, 802.11ax clients will now be grouped together to optimize the multi-user experience.

Stronger wireless security

Support for WPA3 brings improved encryption and authentication methods, while Enhanced Open delivers automatic encryption to open networks. New WPA2-MPSK feature enables simpler passkey management for WPA2 devices – should the Wi-Fi password on one device need to be changed; no additional key changes are needed for other devices on the network.

Built in stateful firewall

Consistent user, device, and application enforcement across WLAN, LAN, and WAN. When deployed alongside Aruba ClearPass Policy Manager, policies can automatically be updated to simplify configuration.

Application visibility and control

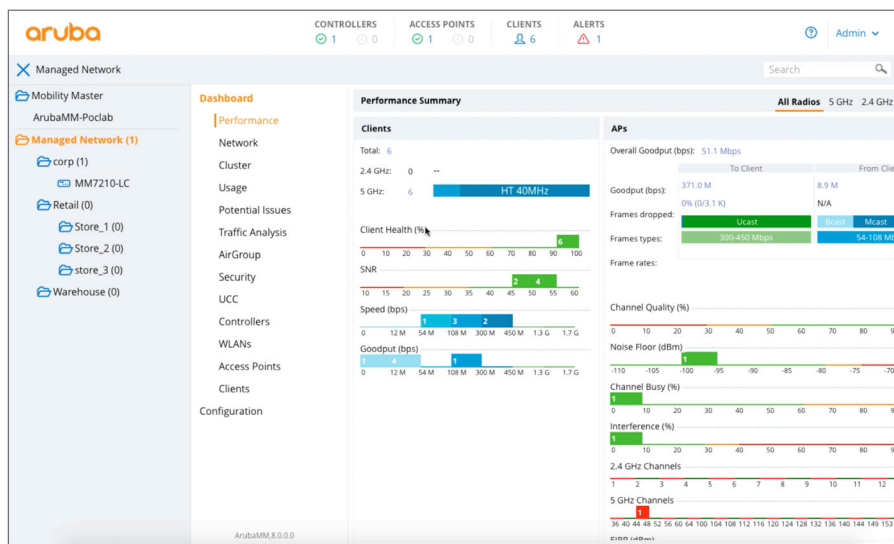
AppRF with Deep Packet Inspection (DPI) technology continuously evaluates and optimizes performance for over 2,600 applications to ensure the highest possible Quality of Service (QoS) – even for encrypted or hidden traffic.

Web content filtering

WebCC is an add-on feature of AppRF that classifies websites by content category and by their reputation rating. Block, apply QoS, limit bandwidth, mirror and log web URL content similar to AppRF for IP addresses and applications.

Unified Communications and Collaboration (UCC)

See real-time data and troubleshoot networks based on call quality metrics such as MOS, latency, jitter and packet loss. Supported applications include: Skype for Business®, Wi-Fi Calling, Facetime, SIP, Jabber, Spark and more.



*Mobility Controller running ArubaOS 8

MOBILITY CONTROLLER VIRTUAL APPLIANCE TECHNICAL SPECIFICATIONS

Model	MC-VA-10	MC-VA-50	MC-VA-250	MC-VA-1K
Maximum AP count	10	50	250	1,000
Maximum client count	256	800	4,000	16,000

Note: The Mobility Controller VA can be scaled by installing multiple instances of MC-VA-1K.

- 4x instances of MC-VA-1K install can scale up to 4,000 APs and 64,000 clients
- 6x instances of MC-VA-1K install can scale up to 6,000 APs and 96,000 clients

SERVICE AND WARRANTY INFORMATION

- Software: 90 days, can be extended with support contract

ORDERING INFORMATION

Part Number	Description
Q9B91AAE	Aruba MC-VA-10 Virtual Mobility Controller License (EG) with Support for up to 10 AP E-LTU
Q9B92AAE	Aruba MC-VA-10 Virtual Mobility Controller License (IL) with Support for up to 10 AP E-LTU
Q9B93AAE	Aruba MC-VA-10 Virtual Mobility Controller License (JP) with Support for up to 10 AP E-LTU
Q9B94AAE	Aruba MC-VA-10 Virtual Mobility Controller License (RW) with Support for up to 10 AP E-LTU
Q9B95AAE	Aruba MC-VA-10 Virtual Mobility Controller License (US) with Support for up to 10 AP E-LTU
Q9B54AAE	Aruba MC-VA-10 Virtual Mobility Controller License (WW) with Support for up to 10 AP E-LTU
Q9B55AAE	Aruba MC-VA-10 Virtual Mobility Controller License (EGF1) FIPS/TAA with Support for up to 10 AP E-LTU
Q9B56AAE	Aruba MC-VA-10 Virtual Mobility Controller License (ILF1) FIPS/TAA with Support for up to 10 AP E-LTU
Q9B57AAE	Aruba MC-VA-10 Virtual Mobility Controller License (JPF1) FIPS/TAA with Support for up to 10 AP E-LTU
Q9B58AAE	Aruba MC-VA-10 Virtual Mobility Controller License (RWF1) FIPS/TAA with Support for up to 10 AP E-LTU
Q9B59AAE	Aruba MC-VA-10 Virtual Mobility Controller License (USF1) FIPS/TAA with Support for up to 10 AP E-LTU
JY911AAE	Aruba MC-VA-50 Virtual Mobility Controller License (EG) with Support for up to 50 AP E-LTU
JY905AAE	Aruba MC-VA-50 Virtual Mobility Controller License (IL) with Support for up to 50 AP E-LTU
JY908AAE	Aruba MC-VA-50 Virtual Mobility Controller License (JP) with Support for up to 50 AP E-LTU
JY899AAE	Aruba MC-VA-50 Virtual Mobility Controller License (RW) with Support for up to 50 AP E-LTU
JY902AAE	Aruba MC-VA-50 Virtual Mobility Controller License (US) with Support for up to 50 AP E-LTU
JZ380AAE	Aruba MC-VA-50 Virtual Mobility Controller License (EGF1) with Support for up to 50 AP E-LTU
JZ383AAE	Aruba MC-VA-50 Virtual Mobility Controller License (ILF1) with Support for up to 50 AP E-LTU
JZ386AAE	Aruba MC-VA-50 Virtual Mobility Controller License (JPF1) with Support for up to 50 AP E-LTU
JZ389AAE	Aruba MC-VA-50 Virtual Mobility Controller License (RWF1) with Support for up to 50 AP E-LTU
JZ392AAE	Aruba MC-VA-50 Virtual Mobility Controller License (USF1) with Support for up to 50 AP E-LTU
JY912AAE	Aruba MC-VA-250 Virtual Mobility Controller License (EG) with Support for up to 250 AP E-LTU
JY906AAE	Aruba MC-VA-250 Virtual Mobility Controller License (IL) with Support for up to 250 AP E-LTU
JY909AAE	Aruba MC-VA-250 Virtual Mobility Controller License (JP) with Support for up to 250 AP E-LTU
JY900AAE	Aruba MC-VA-250 Virtual Mobility Controller License (RW) with Support for up to 250 AP E-LTU
JY903AAE	Aruba MC-VA-250 Virtual Mobility Controller License (US) with Support for up to 250 AP E-LTU
JZ381AAE	Aruba MC-VA-250 Virtual Mobility Controller License (EGF1) with Support for up to 250 AP E-LTU
JZ384AAE	Aruba MC-VA-250 Virtual Mobility Controller License (ILF1) with Support for up to 250 AP E-LTU
JZ387AAE	Aruba MC-VA-250 Virtual Mobility Controller License (JPF1) with Support for up to 250 AP E-LTU
JZ390AAE	Aruba MC-VA-250 Virtual Mobility Controller License (RWF1) with Support for up to 250 AP E-LTU
JZ393AAE	Aruba MC-VA-250 Virtual Mobility Controller License (USF1) with Support for up to 250 AP E-LTU
JY913AAE	Aruba MC-VA-1K Virtual Mobility Controller License (EG) with Support for up to 1000 AP E-LTU
JY907AAE	Aruba MC-VA-1K Virtual Mobility Controller License (IL) with Support for up to 1000 AP E-LTU
JY910AAE	Aruba MC-VA-1K Virtual Mobility Controller License (JP) with Support for up to 1000 AP E-LTU
JY901AAE	Aruba MC-VA-1K Virtual Mobility Controller License (RW) with Support for up to 1000 AP E-LTU
JY904AAE	Aruba MC-VA-1K Virtual Mobility Controller License (US) with Support for up to 1000 AP E-LTU
JZ382AAE	Aruba MC-VA-1K Virtual Mobility Controller License (EGF1) with Support for up to 1000 AP E-LTU
JZ385AAE	Aruba MC-VA-1K Virtual Mobility Controller License (ILF1) with Support for up to 1000 AP E-LTU
JZ388AAE	Aruba MC-VA-1K Virtual Mobility Controller License (JPF1) with Support for up to 1000 AP E-LTU
JZ391AAE	Aruba MC-VA-1K Virtual Mobility Controller License (RWF1) with Support for up to 1000 AP E-LTU
JZ394AAE	Aruba MC-VA-1K Virtual Mobility Controller License (USF1) with Support for up to 1000 AP E-LTU

For additional information on Aruba WLAN products, please refer to:

- ArubaOS Data Sheet (and licenses) – https://www.arubanetworks.com/assets/ds/DS_ArubaOS.pdf
- Mobility Master Product Page – <https://www.arubanetworks.com/products/networking/controllers/mobility-master/>
- Access Points Product Page – <https://www.arubanetworks.com/products/networking/access-points/>