

DATA SHEET

# ARUBA AIRWAVE

On premise IT operations management for multi-vendor campus networks

Aruba AirWave is a scalable, full featured management solution for multi-vendor wired and wireless networks. Organizations gain the visibility, control and troubleshooting tools required to fully manage today's distributed enterprise environments.

AirWave integrates configuration and deployment and real-time visibility and control for comprehensive management and troubleshooting. This provides a flexible platform for maintaining the reliability and performance of Aruba access points, controllers, switches, and selected multi-vendor devices.

## STREAMLINED CONFIGURATION AND DEPLOYMENT

AirWave utilizes configuration groups, assigned templates, and step by step workflows to simplify device configuration. Entire config files can be imported, compared, assigned and archived. Modifying and using smaller segments of configuration files across groups of devices is also supported.

These capabilities allow IT to quickly add, modify and deploy devices across distributed locations, while saving time and minimizing mistakes. Aruba's Zero-Touch Provisioning (ZTP) can be used to automatically push configuration files to devices to further simplify the deployment process. Integrated auditing is also provided for security and change management.

## REAL-TIME VISIBILITY AND CONTROL

AirWave provides detailed health and analytics dashboards to monitor critical applications and services, including:

- **Network Health** – used to view client usage, monitoring and configuration compliance, alert summaries and other selected statistics.

## KEY FEATURES

- Unified Wired and Wireless Network Management
- Simplified Deployment Models
- Broad Visibility and Control
- Proactive Troubleshooting
- Physical and Virtual Appliances
- Enhanced Security and App Visibility

- **Traffic Analysis** – helps to monitor application usage and policy enforcement across the entire network. Tracks web categories, client destinations and relative trust levels. Details are displayed by network, roles, device type and users.
- **UCC Analytics** – a consolidated view of how VoIP applications are performing displays MOS scores, and potential RF performance and capacity issues.

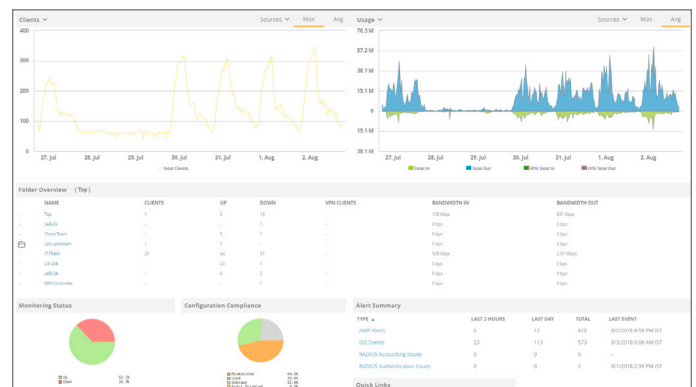


Figure 1: Aruba AirWave Dashboard

For detailed device visibility, simply click a chart or graph to drill-down from any network level view, or locate and select a device for a configuration summary and details on connected clients, neighbors, alerts and related events.

When looking at switch information, additional visibility into key values of individual and stacked switches is provided. This includes port status, PoE consumption, VLAN assignment, device and neighbor connections, power status and trends, alerts and events and which troubleshooting actions can be performed.

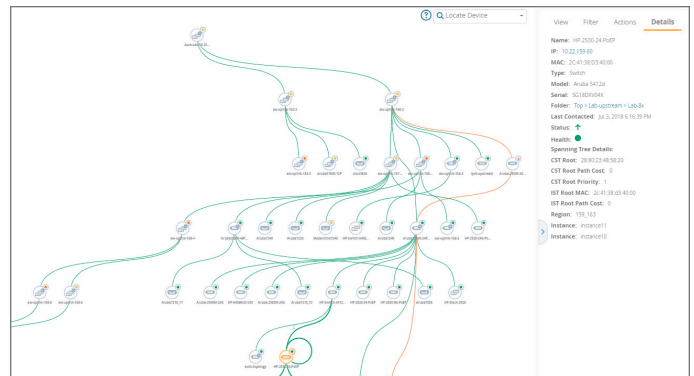


Figure 3: Aruba AirWave Topology View

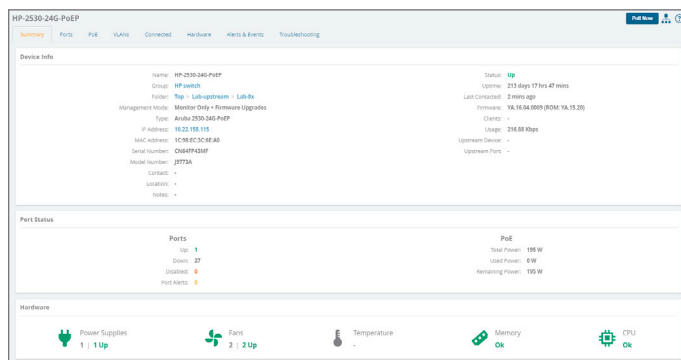


Figure 2: Aruba AirWave Switch Faceplate View

## COMPREHENSIVE MANAGEMENT AND TROUBLESHOOTING

### Role-Based Access, Discovery and Topology

AirWave utilizes a role-based model for administrative access. Multiple combinations of access and management rights can be assigned as needed. AirWave allows IT to protect the environment and provides the ability to tailor administrative access based on assigned scope and responsibilities.

AirWave also discovers and maps devices across the entire environment, including those with distributed locations. The resulting topology map shows upstream relationships between APs, controllers and switches in order to assess the impact on related devices and clients, and to isolate root cause of issues.

### Stage-based Connectivity Health

A reliable connection is the foundation of a successful user experience. AirWave monitors the connectivity of clients, to proactively help identify and resolve issues. Data points include client association, as well as network authentication and DHCP metrics.

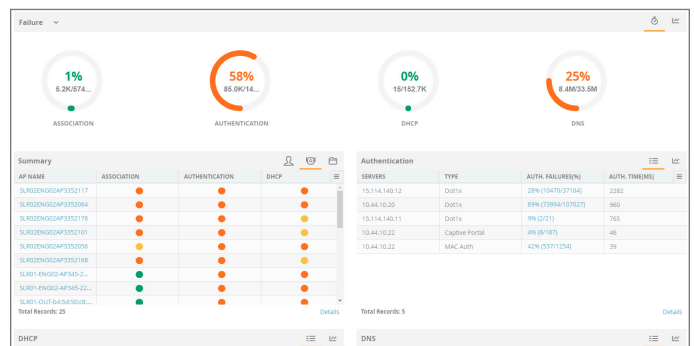


Figure 4: Aruba AirWave Connectivity Health

### VisualRF for Wi-Fi Visibility & Management

Real-time views of actual floorplan maps make it easy to see RF coverage issues, location of all access points, and possible interference points. The result is a comprehensive view of how the network is performing, and potential trouble spots.

Selectable overlays show client health, traffic thresholds, UCC performance and channel utilization to quickly diagnose client, building, floor or location specific issues.

VisualRF also provides the ability to capture and playback physical movement of devices and clients within locations to isolate and troubleshoot those challenging intermittent mobility issues.

### RAPIDS for Intrusion Detection

AirWave utilizes Aruba's Rogue AP Intrusion Detection Service (RAPIDS), to identify and resolve issues caused by rogue access points, and clients.

Wired and wireless data is correlated to identify relevant threats, while reducing false positives to strengthen network security. RAPIDS includes:

- Summary Data – percentage of device classification and acknowledgments, and device counts by type.
- Lists & Events – concise summaries of devices by type and events by severity, category and scope.
- Rules Engine - easily define and edit wireless, wired, and controller properties to detect rogues, classifications and threat levels.

### Firmware Upgrade & Compliance

An advanced image upgrade and compliance module, makes it easy to update firmware by device type or version group, split download images, and schedule updates during off hours to minimize the impact during peak operations.

### FLEXIBLE PLATFORM OPTIONS

AirWave is available on pre-configured hardware appliances or in virtual machine (VM) versions.

AirWave hardware appliances are designed and tested to meet the following guidelines:

- AirWave Pro appliance supports up to 1,500 managed network devices.
- AirWave Enterprise appliance supports up to 4,000 managed network devices.

AirWave virtual appliances are supported on VMware, Microsoft Hyper-V and KVM.

### GOVERNMENT-GRADE CERTIFICATIONS

AirWave is highly secure, and has achieved the Federal Information Processing Standard (FIPS) Publication 140-2 validation, a government level computer security standard for cryptographic modules (Certificate #2577). See [detailed security documentation](#) for more information.

## HARDWARE APPLIANCES

Category	Pro Appliance	Enterprise Appliance
<b>Appliance Specifications</b>		
CPU	8-core 2.6 Ghz HPE DL360 Gen9 E5-2640v3	2 8-core 2.6 Ghz HPE DL360 Gen9 E5-2640v3
Memory	48GB	96GB
Storage	6 300GB 12G SAS 15K 2.5in SC ENT HDD	8 300GB 12G SAS 15K 2.5in SC ENT HDD
<b>Appliance Scalability</b>		
Maximum Managed Devices	1,500	4,000
<b>Power</b>		
Power	500W FS Plat Hot Plug Power Supply	500W FS Plat Hot Plug Power Supply
Power Supply	Optional redundant power supply	Optional redundant power supply
AC Input Voltage	110/220 VAC Auto-Selecting	110/220 VAC Auto-Selecting
AC Input Frequency	50/60 Hz Auto-Selecting	50/60 Hz Auto-Selecting
<b>Physical</b>		
Rackmount	1U SFF Easy Install Rail 1U Cable Management Arm	1U SFF Easy Install Rail 1U Cable Management Arm
Dimensions (H x W x D)	1.7 x 17.1 x 27.5 inches (4.32 x 43.47 x 69.85 cm)	1.7 x 17.1 x 27.5 inches (4.32 x 43.47 x 69.85 cm)
Weight	33.3 lb. (15.31 kg) max	33.3 lb. (15.31 kg) max
HP SmartDrives	8 + 2 SFF/4 LFF max, HDD/SSD	8 + 2 SFF/4 LFF max, HDD/SSD
Networking	4 x 1GbE embedded + FlexibleLOM slot	4 x 1GbE embedded + FlexibleLOM slot
VGA/serial/USB ports	Front VGA opt, rear VGA standard, and serial opt., 5 USB 3.0	Front VGA opt, rear VGA standard, and serial opt., 5 USB 3.0
GPU support	Two single-wide and active to 9.5" in length, up to 150 W each	Two single-wide and active to 9.5" in length, up to 150 W each
Industry compliance	ASHRAE A3 and A4, lower idle power	ASHRAE A3 and A4, lower idle power
<b>Warranty</b>		
Hardware	1 year parts	1 year parts
Software	90 days	90 days

## ORDERING INFORMATION

Part Number	Description
JW546AAE	Aruba LIC-AW Aruba Airwave with RAPIDS and VisualRF 1 Device License E-LTU
JW558AAE	Aruba AW-25-FR AirWave 25 Device Failover License E-LTU
JW559AAE	Aruba AW-50-FR AirWave 50 Device Failover License E-LTU
JW560AAE	Aruba AW-100-FR AirWave 100 Device Failover License E-LTU
JW561AAE	Aruba AW-200-FR AirWave 200 Device Failover License E-LTU
JW562AAE	Aruba AW-500-FR AirWave 500 Device Failover License E-LTU
JW563AAE	Aruba AW-1000-FR 1000 AirWave Device Failover License E-LTU
JW564AAE	Aruba AW-2500-FR 2500 AirWave Device Failover License E-LTU
JW565AAE	Aruba AW-EXF1-50 AirWave 50 Device Failover Expansion License E-LTU
JW566AAE	Aruba AW-EXF1-2500 AirWave 2500 Volume Failover Expansion License E-LTU
JW567AAE	Aruba AW-MASTER AirWave Master Console License E-LTU
JX918A	Aruba AirWave DL360 Professional Edition Hardware Appliance
JX919A	Aruba AirWave DL360 Enterprise Edition Hardware Appliance
JZ075A	Aruba AW-HW-GLASS AirWave Hardware Appliance for Centralized Monitoring
JZ076AAE	Aruba AW-VA-GLASS AirWave Virtual Appliance for Centralized Monitoring E-LTU

