

Overview

HPE FlexNetwork 5130 EI Switch Series



HPE FlexNetwork 5130 24G 4SFP+ EI Switch (JG932A)



HPE FlexNetwork 5130 24G SFP 4SFP+ EI Switch (JG933A)



Overview

HPE FlexNetwork 5130 48G 4SFP+ EI Switch (JG934A)



HPE FlexNetwork 5130 24G PoE+ 4SFP+ (370W) EI Switch (JG936A)

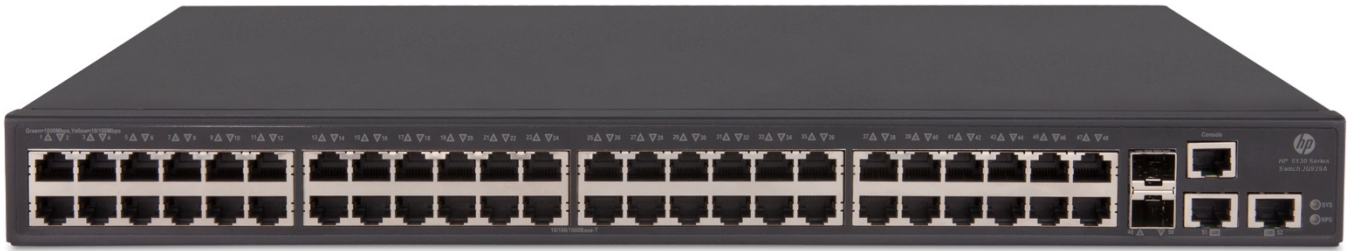


HPE FlexNetwork 5130 48G PoE+ 4SFP+ (370W) EI Switch (JG937A)



HPE FlexNetwork 5130 24G 2SFP+ 2XGT EI Switch (JG938A)

Overview



HPE FlexNetwork 5130 48G 2SFP+ 2XGT EI Switch (JG939A)



HPE FlexNetwork 5130 24G POE+ 2SFP+ 2XGT (370W) EI Switch (JG940A)



HPE FlexNetwork 5130 48G POE+ 2SFP+ 2XGT (370W) EI Switch (JG941A)

Models

HPE FlexNetwork 5130 24G 4SFP+ EI Switch

Overview

HPE FlexNetwork 5130 24G SFP 4SFP+ EI Switch	JG933A
HPE FlexNetwork 5130 48G 4SFP+ EI Switch	JG934A
HPE FlexNetwork 5130 24G PoE+ 4SFP+ (370W) EI Switch	JG936A
HPE FlexNetwork 5130 48G PoE+ 4SFP+ (370W) EI Switch	JG937A
HPE FlexNetwork 5130 24G 2SFP+ 2XGT EI Switch	JG938A
HPE FlexNetwork 5130 48G 2SFP+ 2XGT EI Switch	JG939A
HPE FlexNetwork 5130 24G POE+ 2SFP+ 2XGT (370W) EI Switch	JG940A
HPE FlexNetwork 5130 48G POE+ 2SFP+ 2XGT (370W) EI Switch	JG941A

Key features

- Fixed 10GbE ports for high-speed stacking or uplinks
- Support for multiple services
- Comprehensive security control policies
- Diversified quality of service (QoS) policies
- Excellent manageability

Product overview

The HPE FlexNetwork 5130 EI Switch Series comprises Gigabit Ethernet switches that support static and RIP Layer 3 routing, diversified services, and IPv6 forwarding, as well as provide four 10-Gigabit Ethernet (10GbE) interfaces.

Unique Intelligent Resilient Fabric (IRF) technology creates a virtual fabric by managing several switches as one logical device, which increases network resilience, performance, and availability, while reducing operational complexity. These switches provide Gigabit Ethernet access and can be used at the edge of a network or to connect server clusters in small data centers.

High availability, simplified management, and comprehensive security control policies are among the key features that distinguish this series.

Features and benefits

Software-defined networking

- **OpenFlow**
supports OpenFlow 1.3 specification to enable SDN by allowing separation of the data (packet forwarding) and control (routing decision) paths

Quality of Service (QoS)

- **Broadcast control**
allows limitation of broadcast traffic rate to cut down on unwanted network broadcast traffic
- **Advanced classifier-based QoS**
classifies traffic using multiple match criteria based on Layer 2, 3, and 4 information; applies QoS policies such as setting priority level and rate limit to selected traffic on a port, VLAN, or whole switch
- **Powerful QoS feature**
supports the following congestion actions: strict priority (SP) queuing, weighted round robin (WRR), and SP+WRR
- **Traffic policing**
supports Committed Access Rate (CAR) and line rate

Management

- **Remote configuration and management**
enables configuration and management through a secure Web browser or a CLI located on a remote device

Overview

- **Manager and operator privilege levels**
provides read-only (operator) and read/write (manager) access on CLI and Web browser management interfaces
- **Command authorization**
leverages HWTACACS to link a custom list of CLI commands to an individual network administrator's login; also provides an audit trail
- **Secure Web GUI**
provides a secure, easy-to-use graphical interface for configuring the module via HTTPS
- **Multiple configuration files**
stores easily to the flash image
- **Complete session logging**
provides detailed information for problem identification and resolution
- **Remote monitoring (RMON)**
uses standard SNMP to monitor essential network functions; supports events, alarm, history, and statistics group plus a private alarm extension group
- **IEEE 802.1AB Link Layer Discovery Protocol (LLDP)**
advertises and receives management information from adjacent devices on a network, facilitating easy mapping by network management applications
- **sFlow (RFC 3176)**
provides scalable ASIC-based wirespeed network monitoring and accounting with no impact on network performance; this allows network operators to gather a variety of sophisticated network statistics and information for capacity planning and real-time network monitoring purposes
- **Management VLAN**
segments traffic to and from management interfaces, including CLI/telnet, a Web browser interface, and SNMP
- **Remote intelligent mirroring**
mirrors ingress/egress ACL-selected traffic from a switch port or VLAN to a local or remote switch port anywhere on the network
- **Device Link Detection Protocol (DLDP)**
monitors a cable between two compatible switches and shuts down the ports on both ends if the cable is broken, which prevents network problems such as loops
- **IPv6 management**
provides future-proof networking because the switch is capable of being managed whether the attached network is running IPv4 or IPv6; supports pingv6, tracertv6, Telnetv6, TFTPv6, DNSv6, syslogv6, FTPv6, SNMPv6, DHCPv6, and RADIUS for IPv6
- **Troubleshooting**
ingress and egress port monitoring enables network problem-solving; virtual cable tests provide visibility into cable problems
- **HPE Intelligent Management Center (IMC)**
integrates fault management, element configuration, and network monitoring from a central vantage point; built-in support for third-party devices enables network administrators to centrally manage all network elements with a variety of automated tasks, including discovery, categorization, baseline configurations, and software images; the software also provides configuration comparison tools, version tracking, change alerts, and more
- **Network Management**
SNMP v1/v2c/v3, MIB-II with Traps, and RADIUS Authentication Client MIB (RFC 2618); embedded HTML management tool with secure access

Connectivity

- **Auto-MDIX**
automatically adjusts for straight-through or crossover cables on all 10/100/1000 ports
- **Flow control**
provides back pressure using standard IEEE 802.3x, reducing congestion in heavy traffic situations

Overview

- **High-density connectivity**
provides up to 48 fixed 10/100/1000BASE-T ports in a Layer 2/Layer 3 switch
- **IEEE 802.3at Power over Ethernet (PoE+) support**
simplifies deployment and dramatically reduces installation costs by helping to eliminate the time and cost involved in supplying local power at each access point location
- **Ethernet operations, administration and maintenance (OAM)**
detects data link layer problems that occurred in the "last mile" using the IEEE 802.3ah OAM standard; monitors the status of the link between two devices

Performance

- **Nonblocking architecture**
up to 176 Gb/s nonblocking switching fabric provides wirespeed switching with up to 143 million pps throughput
- **Hardware-based wirespeed access control lists (ACLs)**
help provide high levels of security and ease of administration without impacting network performance with a feature-rich TCAM-based ACL implementation

Resiliency and high availability

- **Separate data and control paths**
separates control from services and keeps service processing isolated; increases security and performance
- **External redundant power supply**
provides high reliability
- **Smart link**
allows 100 ms failover between links
- **Spanning Tree/MSTP, RSTP**
provides redundant links while preventing network loops; supports up to 64 instances of MSTP
- **Intelligent Resilient Fabric (IRF)**
creates virtual resilient switching fabrics, where two or more switches perform as a single L2 switch and L3 router; switches do not have to be co-located and can be part of a disaster-recovery system; servers or switches can be attached using standard LACP for automatic load balancing and high availability; can eliminate the need for complex protocols like Spanning Tree Protocol, Equal-Cost Multipath (ECMP), or VRRP, thereby simplifying network operation

Layer 2 switching

- **16K MAC address table**
provides access to many Layer 2 devices
- **VLAN support and tagging**
supports IEEE 802.1Q with 4,094 simultaneous VLAN IDs
- **IEEE 802.1ad QinQ and selective QinQ**
increase the scalability of an Ethernet network by providing a hierarchical structure; connect multiple LANs on a high-speed campus or metro network
- **10GbE port aggregation**
allows grouping of ports to increase overall data throughput to a remote device
- **Device Link Detection Protocol (DLDP)**
monitors link connectivity and shuts down ports at both ends if unidirectional traffic is detected, preventing loops in STP-based networks
- **Jumbo Frame Support**
improves the performance of large data transfers; supports frame size of up to 9K-bytes

Layer 3 services

Overview

- **Address Resolution Protocol (ARP)**
determines the MAC address of another IP host in the same subnet; supports static ARPs; gratuitous ARP allows detection of duplicate IP addresses; proxy ARP allows normal ARP operation between subnets or when subnets are separated by a Layer 2 network
- **Dynamic Host Configuration Protocol (DHCP)**
simplifies the management of large IP networks; supports client; DHCP Relay enables DHCP operation across subnets
- **Loopback interface address**
defines an address that can always be reachable, improving diagnostic capability
- **User Datagram Protocol (UDP) helper function**
allows UDP broadcasts to be directed across router interfaces to specific IP unicast or subnet broadcast addresses and prevents server spoofing for UDP services such as DHCP
- **Route maps**
provide more control during route redistribution; allow filtering and altering of route metrics
- **DHCP server**
centralizes and reduces the cost of IPv4 address management

Layer 3 routing

- **Static IP routing**
provides manually configured routing for both IPv4 and IPv6 networks
- **Routing Information Protocol (RIP)**
uses a distance vector algorithm with UDP packets for route determination; supports RIPv1 and RIPv2 routing; includes loop protection

Security

- **Access control lists (ACLs)**
provides IP Layer 2 to Layer 4 traffic filtering; supports global ACL, VLAN ACL, port ACL, and IPv6 ACL
- **IEEE 802.1X**
industry-standard method of user authentication using an IEEE 802.1X supplicant on the client in conjunction with a RADIUS server
- **MAC-based authentication**
client is authenticated with the RADIUS server based on the client's MAC address
- **Identity-driven security and access control**
 - **Per-user ACLs**
permits or denies user access to specific network resources based on user identity and time of day, allowing multiple types of users on the same network to access specific network services without risking network security or providing unauthorized access to sensitive data
 - **Automatic VLAN assignment**
automatically assigns users to the appropriate VLAN based on their identities
- **Secure management access**
delivers secure encryption of all access methods (CLI, GUI, or MIB) through SSHv2, SSL, HTTPS and/or SNMPv3
- **Secure FTP/ SCP**
allows secure file transfer to and from the switch; protects against unwanted file downloads or unauthorized copying of a switch configuration file
- **Guest VLAN**
provides a browser-based environment to authenticated clients that is similar to IEEE 802.1X
- **Port security**
allows access only to specified MAC addresses, which can be learned or specified by the administrator
- **Port isolation**
secures and adds privacy, and prevents malicious attackers from obtaining user information
- **STP BPDU port protection**
blocks Bridge Protocol Data Units (BPDUs) on ports that do not require BPDUs, preventing forged BPDU attacks

Overview

- **STP root guard**
protects the root bridge from malicious attacks or configuration mistakes
- **DHCP protection**
blocks DHCP packets from unauthorized DHCP servers, preventing denial-of-service attacks
- **IP source guard**
helps prevent IP spoofing attacks
- **Dynamic ARP protection**
blocks ARP broadcasts from unauthorized hosts, preventing eavesdropping or theft of network data
- **RADIUS/HWTACACS**
eases switch management security administration by using a password authentication server

Convergence

- **IEEE 802.1AB Link Layer Discovery Protocol (LLDP)**
facilitates easy mapping using network management applications with LLDP automated device discovery protocol
- **LLDP-MED**
is a standard extension that automatically configures network devices, including LLDP-capable IP phones
- **LLDP-CDP compatibility**
receives and recognizes CDP packets from Cisco's IP phones for seamless interoperation
- **IEEE 802.3at Power over Ethernet (PoE+)**
provides up to 30 W per port that allows support of the latest PoE+-capable devices such as IP phones, wireless access points, and security cameras, as well as any IEEE 802.3af-compliant end device; eliminates the cost of additional electrical cabling and circuits that would otherwise be necessary in IP phone and WLAN deployments
- **PoE allocations**
supports multiple methods (automatic, IEEE 802.3af class, LLDP-MED, or user-specified) to allocate PoE power for more efficient energy savings
- **Voice VLAN**
automatically assigns VLAN and priority for IP phones, simplifying network configuration and maintenance
- **IP multicast snooping (data-driven IGMP)**
prevents flooding of IP multicast traffic

Device support

- **Prestandard PoE Support**
detects and provides power to prestandard PoE devices such as wireless LAN access points and IP phones

Additional information

- **Green IT and power**
improves energy efficiency through the use of the latest advances in silicon development; shuts off unused ports and utilizes variable-speed fans, reducing energy costs
- **Green initiative support**
provides support for RoHS and WEEE regulations
- **Unified Hewlett Packard Enterprise Comware operating system with modular architecture**
provides an easy-to-enhance-and-extend feature set, which doesn't require whole-scale changes; all switching, routing, and security platforms leverage the Comware OS, a common unified modular operating system
- **Energy Efficient Ethernet (EEE) Support**
reduces power consumption in accordance with IEEE 802.3az

Warranty and support

Overview

- **Limited Lifetime Warranty**

See <http://www.hpe.com/networking/warrantysummary> for warranty and support information included with your product purchase.

- **Software releases**

to find software for your product, refer to <http://www.hpe.com/networking/support>; for details on the software releases available with your product purchase, refer to <http://www.hpe.com/networking/warrantysummary>

HPE Recommended Options have the best performance, value and availability.

Recommended Options have been selected by Hewlett Packard Enterprise experts to provide the right technology for a range of workloads and market segments. Fully integrated into the ProLiant management and security experience, Recommended Options provide the best fit with timely availability. [View the list for your region.](#)

Extended Options provide an extended catalog of products tailored for customers in specific markets or with specific workloads, requiring the utmost in performance or value. Fully integrated into the ProLiant management and security experience, Extended Options represent great value and performance but typically have a longer lead-time.

Configuration

Build To Order:

BTO is a standalone unit with no integration. BTO products ship standalone are not part of a CTO or Rack-Shippable solution.

Switch Chassis

HPE FlexNetwork 5130 24G 4SFP+ EI Switch	JG932A
<ul style="list-style-type: none"> • 24 RJ-45 autosensing 10/100/1000 ports • 4 SFP+ ports • min=0 \ max=4 SFP+ Transceivers • Power supply included • 1U - Height 	See Configuration NOTE:2, 4, 5
PDU Cable NA/MEX/TW/JP	JG932A#B2B
<ul style="list-style-type: none"> • C15 PDU Jumper Cord (NA/MEX/TW/JP) 	
PDU Cable ROW	JG932A#B2C
<ul style="list-style-type: none"> • C15 PDU Jumper Cord (ROW) 	
High Volt Switch to Wall Power Cord	JG932A#B2E
<ul style="list-style-type: none"> • NEMA L6-20P Cord (NA/MEX/JP/TW) 	
HPE FlexNetwork 5130 24G SFP 4SFP+ EI Switch	JG933A
<ul style="list-style-type: none"> • 24 SFP ports • (Of the 24, 8 are dual-personality ports - autosensing 10/100/1000BASE-T or SFP) • min=0 \ max=24 SFP Transceivers • 4 SFP+ ports • min=0 \ max=4 SFP+ Transceivers • Must select min 1 power supply • 1U - Height 	See Configuration NOTE:1, 2
HPE FlexNetwork 5130 48G 4SFP+ EI Switch	JG934A
<ul style="list-style-type: none"> • 48 RJ-45 autosensing 10/100/1000 ports • 4 SFP+ ports • min=0 \ max=4 SFP+ Transceivers • Power supply included • 1U - Height 	See Configuration NOTE:2, 4, 5
PDU Cable NA/MEX/TW/JP	JG934A#B2B
<ul style="list-style-type: none"> • C15 PDU Jumper Cord (NA/MEX/TW/JP) 	
PDU Cable ROW	JG934A#B2C
<ul style="list-style-type: none"> • C15 PDU Jumper Cord (ROW) 	
High Volt Switch to Wall Power Cord	JG934A#B2E
<ul style="list-style-type: none"> • NEMA L6-20P Cord (NA/MEX/JP/TW) 	
HPE FlexNetwork 5130 24G PoE+ 4SFP+ (370W) EI Switch	JG936A

Configuration

<ul style="list-style-type: none"> • 24 RJ-45 autosensing 10/100/1000 ports • 4 SFP+ ports • min=0 \ max=4 SFP+ Transceivers • Power supply included • 1U - Height 	See Configuration NOTE:2, 4, 5
PDU Cable NA/MEX/TW/JP <ul style="list-style-type: none"> • C15 PDU Jumper Cord (NA/MEX/TW/JP) 	JG936A#B2B
PDU Cable ROW <ul style="list-style-type: none"> • C15 PDU Jumper Cord (ROW) 	JG936A#B2C
High Volt Switch to Wall Power Cord <ul style="list-style-type: none"> • NEMA L6-20P Cord (NA/MEX/JP/TW) 	JG936A#B2E
HPE FlexNetwork 5130 48G PoE+ 4SFP+ (370W) EI Switch <ul style="list-style-type: none"> • 48 RJ-45 autosensing 10/100/1000 ports • 4 SFP+ ports • min=0 \ max=4 SFP+ Transceivers • Power supply included • 1U - Height 	JG937A See Configuration NOTE:2, 4, 5
PDU Cable NA/MEX/TW/JP <ul style="list-style-type: none"> • C15 PDU Jumper Cord (NA/MEX/TW/JP) 	JG937A#B2B
PDU Cable ROW <ul style="list-style-type: none"> • C15 PDU Jumper Cord (ROW) 	JG937A#B2C
High Volt Switch to Wall Power Cord <ul style="list-style-type: none"> • NEMA L6-20P Cord (NA/MEX/JP/TW) 	JG937A#B2E
HPE FlexNetwork 5130 24G 2SFP+ 2XGT EI Switch <ul style="list-style-type: none"> • 24 RJ-45 autosensing 10/100/1000 ports • 2 SFP+ ports • min=0 \ max=2 SFP Transceivers • 2 RJ-45 1/10GBASE-T ports • Power supply included • 1U - Height 	JG938A See Configuration NOTE:2, 4, 5
PDU Cable NA/MEX/TW/JP <ul style="list-style-type: none"> • C15 PDU Jumper Cord (NA/MEX/TW/JP) 	JG938A#B2B
PDU Cable ROW <ul style="list-style-type: none"> • C15 PDU Jumper Cord (ROW) 	JG938A#B2C
High Volt Switch to Wall Power Cord <ul style="list-style-type: none"> • NEMA L6-20P Cord (NA/MEX/JP/TW) 	JG938A#B2E
HPE FlexNetwork 5130 48G 2SFP+ 2XGT EI Switch	JG939A

Configuration

<ul style="list-style-type: none"> • 48 RJ-45 autosensing 10/100/1000 ports • 2 SFP+ ports • min=0 \ max=2 SFP Transceivers • 2 RJ-45 1/10GBASE-T ports • Power supply included • 1U - Height 	See Configuration NOTE:2, 4, 5
PDU Cable NA/MEX/TW/JP	JG939A#B2B
<ul style="list-style-type: none"> • C15 PDU Jumper Cord (NA/MEX/TW/JP) 	
PDU Cable ROW	JG939A#B2C
<ul style="list-style-type: none"> • C15 PDU Jumper Cord (ROW) 	
High Volt Switch to Wall Power Cord	JG939A#B2E
<ul style="list-style-type: none"> • NEMA L6-20P Cord (NA/MEX/JP/TW) 	
HPE FlexNetwork 5130 24G POE+ 2SFP+ 2XGT (370W) EI Switch	JG940A See Configuration NOTE:2, 4, 5
<ul style="list-style-type: none"> • 24 RJ-45 autosensing 10/100/1000 ports • 2 SFP+ ports • min=0 \ max=2 SFP Transceivers • 2 RJ-45 1/10GBASE-T ports • Power supply included • 1U - Height 	
PDU Cable NA/MEX/TW/JP	JG940A#B2B
<ul style="list-style-type: none"> • C15 PDU Jumper Cord (NA/MEX/TW/JP) 	
PDU Cable ROW	JG940A#B2C
<ul style="list-style-type: none"> • C15 PDU Jumper Cord (ROW) 	
High Volt Switch to Wall Power Cord	JG940A#B2E
<ul style="list-style-type: none"> • NEMA L6-20P Cord (NA/MEX/JP/TW) 	
HPE FlexNetwork 5130 48G POE+ 2SFP+ 2XGT (370W) EI Switch	JG941A See Configuration NOTE:2, 4, 5
<ul style="list-style-type: none"> • 48 RJ-45 autosensing 10/100/1000 ports • 2 SFP+ ports • min=0 \ max=2 SFP Transceivers • 2 RJ-45 1/10GBASE-T ports • Power supply included • 1U - Height 	
PDU Cable NA/MEX/TW/JP	JG941A#B2B
<ul style="list-style-type: none"> • C15 PDU Jumper Cord (NA/MEX/TW/JP) 	
PDU Cable ROW	JG941A#B2C
<ul style="list-style-type: none"> • C15 PDU Jumper Cord (ROW) 	
High Volt Switch to Wall Power Cord	JG941A#B2E
<ul style="list-style-type: none"> • NEMA L6-20P Cord (NA/MEX/JP/TW) 	

Configuration

HPE FlexNetwork 5130 24G 4SFP+ EI Brazil Switch

- 24 RJ-45 autosensing 10/100/1000 ports
- 4 SFP+ ports
- min=0 \ max=4 SFP+ Transceivers
- Power supply included
- 1U - Height

JG975A
See Configuration
NOTE:2, 6, 7

HPE FlexNetwork 5130 48G 4SFP+ EI Brazil Switch

- 48 RJ-45 autosensing 10/100/1000 ports
- 4 SFP+ ports
- min=0 \ max=4 SFP+ Transceivers
- Power supply included
- 1U - Height

JG976A
See Configuration
NOTE:2, 6, 7

HPE FlexNetwork 5130 24G PoE+ 4SFP+ (370W) EI Brazil Switch

- 24 RJ-45 autosensing 10/100/1000 ports
- 4 SFP+ ports
- min=0 \ max=4 SFP+ Transceivers
- Power supply included
- 1U - Height

JG977A
See Configuration
NOTE:2, 6, 7

HPE FlexNetwork 5130 48G PoE+ 4SFP+ (370W) EI Brazil Switch

- 48 RJ-45 autosensing 10/100/1000 ports
- 4 SFP+ ports
- min=0 \ max=4 SFP+ Transceivers
- Power supply included
- 1U - Height

JG978A
See Configuration
NOTE:2, 6, 7

Configuration Rules:

Note 1

The following Transceivers install into this Switch: (SFP Ports)

HPE X115 100M SFP LC FX Transceiver	JD102B
HPE X110 100M SFP LC LX Transceiver	JD120B
HPE X110 100M SFP LC LH40 Transceiver	JD090A
HPE X110 100M SFP LC LH80 Transceiver	JD091A
HPE X115 100M SFP LC BX 10-U Transceiver	JD100A
HPE X115 100M SFP LC BX 10-D Transceiver	JD101A
HPE X120 1G SFP LC SX Transceiver	JD118B
HPE X120 1G SFP LC LX Transceiver	JD119B
HPE X120 1G SFP RJ45 T Transceiver	JD089B
HPE X120 1G SFP LC BX 10-U Transceiver	JD098B
HPE X120 1G SFP LC BX 10-D Transceiver	JD099B
HPE X120 1G SFP LC LH40 1550nm Transceiver	JD062A
HPE X125 1G SFP LC LH40 1310nm Transceiver	JD061A
HPE X125 1G SFP LC LH70 Transceiver	JD063B
HPE X120 1G SFP LC LH100 Transceiver	JD103A

Note 2

The following Transceivers install into this Switch: (SFP+ Ports)

HPE X120 1G SFP LC SX Transceiver	JD118B
-----------------------------------	--------

Configuration

HPE X120 1G SFP LC LX Transceiver	JD119B
HPE X120 1G SFP RJ45 T Transceiver	JD089B
HPE X120 1G SFP LC BX 10-U Transceiver	JD098B
HPE X120 1G SFP LC BX 10-D Transceiver	JD099B
HPE X120 1G SFP LC LH40 1550nm Transceiver	JD062A
HPE X125 1G SFP LC LH40 1310nm Transceiver	JD061A
HPE X125 1G SFP LC LH70 Transceiver	JD063B
HPE X120 1G SFP LC LH100 Transceiver	JD103A
HPE X130 10G SFP+ LC SR Transceiver	JD092B
HPE X130 10G SFP+ LC LR Transceiver	JD094B
HPE FlexNetwork X240 10G SFP+ to SFP+ 0.65m Direct Attach Copper Cable	JD095C
HPE FlexNetwork X240 10G SFP+ to SFP+ 1.2m Direct Attach Copper Cable	JD096C
HPE FlexNetwork X240 10G SFP+ to SFP+ 3m Direct Attach Copper Cable	JD097C
HPE FlexNetwork X240 10G SFP+ to SFP+ 5m Direct Attach Copper Cable	JG081C
HPE X240 10G SFP+ to SFP+ 0.65m Direct Attach Copper Campus-Cable	JH693A
HPE X240 10G SFP+ to SFP+ 1.2m Direct Attach Copper Campus-Cable	JH694A
HPE X240 10G SFP+ to SFP+ 3m Direct Attach Copper Campus-Cable	JH695A
HPE X2A0 10G SFP+ to SFP+ 7m Active Optical Cable	JL290A
HPE X2A0 10G SFP+ to SFP+ 10m Active Optical Cable	JL291A
HPE X2A0 10G SFP+ to SFP+ 20m Active Optical Cable	JL292A

Note 4 Localization (Wall Power Cord) required on orders without #B2B, #B2C (PDU Power Cord) or #B2E. (See Localization Menu)

Note 5 #B2E is Offered only in NA, Mexico, Taiwan and Japan.

Note 6 Only available in Brazil.

Note 7 Localization required. (See Localization Menu)

Remarks Drop down under power supply should offer the following options and results:
 Switch/Router/Power Supply to PDU Power Cord - #B2B in North America, Mexico, Taiwan, and Japan or #B2C ROW. (Watson Default B2B or B2C for Rack Level CTO)
 Switch/Router/Power Supply to Wall Power Cord - Localized Option (Watson Default for BTO and Box Level CTO)
 High Volt Switch/Router/Power Supply to Wall Power Cord - #B2E Option. (Offered only in North America, Mexico, Taiwan, and Japan)

Box Level Integration CTO Models

CTO Solution Sku

HP 51xx CTO Switch Solution

- SSP trigger sku

JG706A
 See Configuration
NOTE: 8

CTO Base Sku

HPE FlexNetwork 5130 24G 4SFP+ EI Switch

JG932A

Configuration

<ul style="list-style-type: none"> • 24 RJ-45 autosensing 10/100/1000 ports • 4 SFP+ ports • min=0 \ max=4 SFP+ Transceivers • Power supply included • 1U - Height 	See Configuration NOTE:2, 4, 5, 6, 7
PDU Cable NA/MEX/TW/JP <ul style="list-style-type: none"> • C15 PDU Jumper Cord (NA/MEX/TW/JP) 	JG932A#B2B
PDU Cable ROW <ul style="list-style-type: none"> • C15 PDU Jumper Cord (ROW) 	JG932A#B2C
High Volt Switch to Wall Power Cord <ul style="list-style-type: none"> • NEMA L6-20P Cord (NA/MEX/JP/TW) 	JG932A#B2E
HPE FlexNetwork 5130 24G SFP 4SFP+ EI Switch <ul style="list-style-type: none"> • 24 SFP ports • (Of the 24, 8 are dual-personality ports - autosensing 10/100/1000BASE-T or SFP) • min=0 \ max=24 SFP Transceivers • 4 SFP+ ports • min=0 \ max=4 SFP+ Transceivers • Must select min 1 power supply • 1U - Height 	JG933A See Configuration NOTE:1, 2, 6, 7
HPE FlexNetwork 5130 48G 4SFP+ EI Switch <ul style="list-style-type: none"> • 48 RJ-45 autosensing 10/100/1000 ports • 4 SFP+ ports • min=0 \ max=4 SFP+ Transceivers • Power supply included • 1U - Height 	JG934A See Configuration NOTE:2, 4, 5, 6, 7
PDU Cable NA/MEX/TW/JP <ul style="list-style-type: none"> • C15 PDU Jumper Cord (NA/MEX/TW/JP) 	JG934A#B2B
PDU Cable ROW <ul style="list-style-type: none"> • C15 PDU Jumper Cord (ROW) 	JG934A#B2C
High Volt Switch to Wall Power Cord <ul style="list-style-type: none"> • NEMA L6-20P Cord (NA/MEX/JP/TW) 	JG934A#B2E
HPE FlexNetwork 5130 24G PoE+ 4SFP+ (370W) EI Switch <ul style="list-style-type: none"> • 24 RJ-45 autosensing 10/100/1000 ports • 4 SFP+ ports • min=0 \ max=4 SFP+ Transceivers • Power supply included • 1U - Height 	JG936A See Configuration NOTE:2, 4, 5, 6, 7
PDU Cable NA/MEX/TW/JP <ul style="list-style-type: none"> • C15 PDU Jumper Cord (NA/MEX/TW/JP) 	JG936A#B2B

Configuration

PDU Cable ROW	JG936A#B2C
<ul style="list-style-type: none"> C15 PDU Jumper Cord (ROW) 	
High Volt Switch to Wall Power Cord	JG936A#B2E
<ul style="list-style-type: none"> NEMA L6-20P Cord (NA/MEX/JP/TW) 	
HPE FlexNetwork 5130 48G PoE+ 4SFP+ (370W) EI Switch	JG937A
<ul style="list-style-type: none"> 48 RJ-45 autosensing 10/100/1000 ports 4 SFP+ ports min=0 \ max=4 SFP+ Transceivers Power supply included 1U - Height 	See Configuration NOTE:2, 4, 5, 6, 7
PDU Cable NA/MEX/TW/JP	JG937A#B2B
<ul style="list-style-type: none"> C15 PDU Jumper Cord (NA/MEX/TW/JP) 	
PDU Cable ROW	JG937A#B2C
<ul style="list-style-type: none"> C15 PDU Jumper Cord (ROW) 	
High Volt Switch to Wall Power Cord	JG937A#B2E
<ul style="list-style-type: none"> NEMA L6-20P Cord (NA/MEX/JP/TW) 	

Configuration Rules:

Note 1	The following Transceivers install into this Switch: (SFP Ports) (Use #0D1 quoted to switch if switch is CTO) - if applicable	
	HPE X115 100M SFP LC FX Transceiver	JD102B
	HPE X110 100M SFP LC LX Transceiver	JD120B
	HPE X110 100M SFP LC LH40 Transceiver	JDO90A
	HPE X110 100M SFP LC LH80 Transceiver	JDO91A
	HPE X115 100M SFP LC BX 10-U Transceiver	JD100A
	HPE X115 100M SFP LC BX 10-D Transceiver	JD101A
	HPE X120 1G SFP LC SX Transceiver	JD118B
	HPE X120 1G SFP LC LX Transceiver	JD119B
	HPE X120 1G SFP RJ45 T Transceiver	JD089B
	HPE X120 1G SFP LC BX 10-U Transceiver	JD098B
	HPE X120 1G SFP LC BX 10-D Transceiver	JD099B
	HPE X120 1G SFP LC LH40 1550nm Transceiver	JDO62A
	HPE X125 1G SFP LC LH40 1310nm Transceiver	JDO61A
	HPE X125 1G SFP LC LH70 Transceiver	JDO63B
	HPE X120 1G SFP LC LH100 Transceiver	JD103A
Note 2	The following Transceivers install into this Switch: (SFP+ Ports) (Use #0D1 or #B01 quoted to switch if switch is CTO) - if applicable	
	HPE X120 1G SFP LC SX Transceiver	JD118B
	HPE X120 1G SFP LC LX Transceiver	JD119B
	HPE X120 1G SFP RJ45 T Transceiver	JD089B
	HPE X120 1G SFP LC BX 10-U Transceiver	JD098B
	HPE X120 1G SFP LC BX 10-D Transceiver	JD099B
	HPE X120 1G SFP LC LH40 1550nm Transceiver	JDO62A

Configuration

HPE X125 1G SFP LC LH40 1310nm Transceiver	JD061A
HPE X125 1G SFP LC LH70 Transceiver	JD063B
HPE X120 1G SFP LC LH100 Transceiver	JD103A
HPE X130 10G SFP+ LC SR Transceiver	JD092B
HPE X130 10G SFP+ LC LR Transceiver	JD094B
HPE FlexNetwork X240 10G SFP+ to SFP+ 0.65m Direct Attach Copper Cable	JD095C
HPE FlexNetwork X240 10G SFP+ to SFP+ 1.2m Direct Attach Copper Cable	JD096C
HPE FlexNetwork X240 10G SFP+ to SFP+ 3m Direct Attach Copper Cable	JD097C
HPE FlexNetwork X240 10G SFP+ to SFP+ 5m Direct Attach Copper Cable	JG081C
HPE X240 10G SFP+ to SFP+ 0.65m Direct Attach Copper Campus-Cable	JH693A
HPE X240 10G SFP+ to SFP+ 1.2m Direct Attach Copper Campus-Cable	JH694A
HPE X240 10G SFP+ to SFP+ 3m Direct Attach Copper Campus-Cable	JH695A
HPE X2A0 10G SFP+ to SFP+ 7m Active Optical Cable	JL290A
HPE X2A0 10G SFP+ to SFP+ 10m Active Optical Cable	JL291A
HPE X2A0 10G SFP+ to SFP+ 20m Active Optical Cable	JL292A

Note 4 Localization (Wall Power Cord) required on orders without #B2B, #B2C (PDU Power Cord) or #B2E. (See Localization Menu)

Note 5 #B2E is Offered only in NA, Mexico, Taiwan and Japan.

Note 6 If this Switch is selected, Then a Minimum of 1 factory integrated accessory must be ordered and integrated to CTO chassis. See Menu below, option must have a #OD1 to be integrated to the CTO Chassis.

Note 7 If the Switch Chassis is to be Box Level Factory Integrated (CTO), Then the #OD1 is required on the Switch Chassis and integrated to the JG706A - HPE 51xx CTO Enablement. (Min 1/Max 1 Switch per SSP)

Note 8 Clic Only - When JG706A is ordered without any OD1 accessories and without any of the listed Factory Express SKUs, then CLIC will display an UNB.

Factory Express: HA838A1, HA839A1, HA840A1, HA841A1, HA848A1, HA849A1, HA867A1, HA868A1, HA875A1, HK135A1, HK136A1

Remarks: Drop down under power supply should offer the following options and results:
Switch/Router/Power Supply to PDU Power Cord - #B2B in North America, Mexico, Taiwan, and Japan or #B2C ROW. (Watson Default B2B or B2C for Rack Level CTO)
Switch/Router/Power Supply to Wall Power Cord - Localized Option (Watson Default for BTO and Box Level CTO)
High Volt Switch/Router/Power Supply to Wall Power Cord - #B2E Option. (Offered only in North America, Mexico, Taiwan, and Japan)

Clic UNB - If an option is ordered with #OD1/#B01, then the switch must have #OD1 option.

Rack Level Integration CTO Models

Switch Chassis

HPE FlexNetwork 5130 24G 4SFP+ EI Switch

JG932A

Configuration

<ul style="list-style-type: none"> • 24 RJ-45 autosensing 10/100/1000 ports • 4 SFP+ ports • min=0 \ max=4 SFP+ Transceivers • Power supply included • 1U - Height 	See Configuration NOTE:2, 4, 7
PDU Cable NA/MEX/TW/JP	JG932A#B2B
<ul style="list-style-type: none"> • C15 PDU Jumper Cord (NA/MEX/TW/JP) 	
PDU Cable ROW	JG932A#B2C
<ul style="list-style-type: none"> • C15 PDU Jumper Cord (ROW) 	
HPE FlexNetwork 5130 24G SFP 4SFP+ EI Switch	JG933A
<ul style="list-style-type: none"> • 24 SFP ports • (Of the 24, 8 are dual-personality ports - autosensing 10/100/1000BASE-T or SFP) • min=0 \ max=24 SFP Transceivers • 4 SFP+ ports • min=0 \ max=4 SFP+ Transceivers • Must select min 1 power supply • 1U - Height 	See Configuration NOTE:1, 2, 7
HPE FlexNetwork 5130 48G 4SFP+ EI Switch	JG934A
<ul style="list-style-type: none"> • 48 RJ-45 autosensing 10/100/1000 ports • 4 SFP+ ports • min=0 \ max=4 SFP+ Transceivers • Power supply included • 1U - Height 	See Configuration NOTE:2, 4, 7
PDU Cable NA/MEX/TW/JP	JG934A#B2B
<ul style="list-style-type: none"> • C15 PDU Jumper Cord (NA/MEX/TW/JP) 	
PDU Cable ROW	JG934A#B2C
<ul style="list-style-type: none"> • C15 PDU Jumper Cord (ROW) 	
HPE FlexNetwork 5130 24G PoE+ 4SFP+ (370W) EI Switch	JG936A
<ul style="list-style-type: none"> • 24 RJ-45 autosensing 10/100/1000 ports • 4 SFP+ ports • min=0 \ max=4 SFP+ Transceivers • Power supply included • 1U - Height 	See Configuration NOTE:2, 4, 7
PDU Cable NA/MEX/TW/JP	JG936A#B2B
<ul style="list-style-type: none"> • C15 PDU Jumper Cord (NA/MEX/TW/JP) 	
PDU Cable ROW	JG936A#B2C
<ul style="list-style-type: none"> • C15 PDU Jumper Cord (ROW) 	
HPE FlexNetwork 5130 48G PoE+ 4SFP+ (370W) EI Switch	JG937A
<ul style="list-style-type: none"> • 48 RJ-45 autosensing 10/100/1000 ports • 4 SFP+ ports 	See Configuration NOTE:2, 4, 7

Configuration

<ul style="list-style-type: none"> • min=0 \ max=4 SFP+ Transceivers • Power supply included • 1U - Height 	
PDU Cable NA/MEX/TW/JP	JG937A#B2B
<ul style="list-style-type: none"> • C15 PDU Jumper Cord (NA/MEX/TW/JP) 	
PDU Cable ROW	JG937A#B2C
<ul style="list-style-type: none"> • C15 PDU Jumper Cord (ROW) 	
HPE FlexNetwork 5130 24G 2SFP+ 2XGT EI Switch	JG938A
<ul style="list-style-type: none"> • 24 RJ-45 autosensing 10/100/1000 ports • 2 SFP+ ports • min=0 \ max=2 SFP Transceivers • 2 RJ-45 1/10GBASE-T ports • Power supply included • 1U - Height 	See Configuration NOTE:2, 4, 7
PDU Cable NA/MEX/TW/JP	JG938A#B2B
<ul style="list-style-type: none"> • C15 PDU Jumper Cord (NA/MEX/TW/JP) 	
PDU Cable ROW	JG938A#B2C
<ul style="list-style-type: none"> • C15 PDU Jumper Cord (ROW) 	
HPE FlexNetwork 5130 48G 2SFP+ 2XGT EI Switch	JG939A
<ul style="list-style-type: none"> • 48 RJ-45 autosensing 10/100/1000 ports • 2 SFP+ ports • min=0 \ max=2 SFP Transceivers • 2 RJ-45 1/10GBASE-T ports • Power supply included • 1U - Height 	See Configuration NOTE:2, 4, 7
PDU Cable NA/MEX/TW/JP	JG939A#B2B
<ul style="list-style-type: none"> • C15 PDU Jumper Cord (NA/MEX/TW/JP) 	
PDU Cable ROW	JG939A#B2C
<ul style="list-style-type: none"> • C15 PDU Jumper Cord (ROW) 	
HPE FlexNetwork 5130 24G POE+ 2SFP+ 2XGT (370W) EI Switch	JG940A
<ul style="list-style-type: none"> • 24 RJ-45 autosensing 10/100/1000 ports • 2 SFP+ ports • min=0 \ max=2 SFP Transceivers • 2 RJ-45 1/10GBASE-T ports • Power supply included • 1U - Height 	See Configuration NOTE:2, 4, 7
PDU Cable NA/MEX/TW/JP	JG940A#B2B
<ul style="list-style-type: none"> • C15 PDU Jumper Cord (NA/MEX/TW/JP) 	
PDU Cable ROW	JG940A#B2C

Configuration

- C15 PDU Jumper Cord (ROW)

HPE FlexNetwork 5130 48G POE+ 2SFP+ 2XGT (370W) EI Switch

- 48 RJ-45 autosensing 10/100/1000 ports
- 2 SFP+ ports
- min=0 \ max=2 SFP Transceivers
- 2 RJ-45 1/10GBASE-T ports
- Power supply included
- 1U - Height

JG941A

See Configuration

NOTE:2, 4, 7

PDU Cable NA/MEX/TW/JP

- C15 PDU Jumper Cord (NA/MEX/TW/JP)

JG941A#B2B

PDU Cable ROW

- C15 PDU Jumper Cord (ROW)

JG941A#B2C

Configuration Rules:

Note 1

The following Transceivers install into this Switch: (SFP Ports) (Use #0D1 quoted to switch if switch is CTO) - if applicable

HPE X115 100M SFP LC FX Transceiver	JD102B
HPE X110 100M SFP LC LX Transceiver	JD120B
HPE X110 100M SFP LC LH40 Transceiver	JD090A
HPE X110 100M SFP LC LH80 Transceiver	JD091A
HPE X115 100M SFP LC BX 10-U Transceiver	JD100A
HPE X115 100M SFP LC BX 10-D Transceiver	JD101A
HPE X120 1G SFP LC SX Transceiver	JD118B
HPE X120 1G SFP LC LX Transceiver	JD119B
HPE X120 1G SFP RJ45 T Transceiver	JD089B
HPE X120 1G SFP LC BX 10-U Transceiver	JD098B
HPE X120 1G SFP LC BX 10-D Transceiver	JD099B
HPE X120 1G SFP LC LH40 1550nm Transceiver	JD062A
HPE X125 1G SFP LC LH40 1310nm Transceiver	JD061A
HPE X125 1G SFP LC LH70 Transceiver	JD063B
HPE X120 1G SFP LC LH100 Transceiver	JD103A

Note 2

The following Transceivers install into this Switch: (SFP+ Ports) (Use #0D1 or #B01 quoted to switch if switch is CTO) - if applicable

HPE X120 1G SFP LC SX Transceiver	JD118B
HPE X120 1G SFP LC LX Transceiver	JD119B
HPE X120 1G SFP RJ45 T Transceiver	JD089B
HPE X120 1G SFP LC BX 10-U Transceiver	JD098B
HPE X120 1G SFP LC BX 10-D Transceiver	JD099B
HPE X120 1G SFP LC LH40 1550nm Transceiver	JD062A
HPE X125 1G SFP LC LH40 1310nm Transceiver	JD061A
HPE X125 1G SFP LC LH70 Transceiver	JD063B
HPE X120 1G SFP LC LH100 Transceiver	JD103A
HPE X130 10G SFP+ LC SR Transceiver	JD092B
HPE X130 10G SFP+ LC LR Transceiver	JD094B
HPE FlexNetwork X240 10G SFP+ to SFP+ 0.65m Direct Attach Copper Cable	JD095C

Configuration

HPE FlexNetwork X240 10G SFP+ to SFP+ 1.2m Direct Attach Copper Cable	JD096C
HPE FlexNetwork X240 10G SFP+ to SFP+ 3m Direct Attach Copper Cable	JD097C
HPE FlexNetwork X240 10G SFP+ to SFP+ 5m Direct Attach Copper Cable	JG081C
HPE X240 10G SFP+ to SFP+ 0.65m Direct Attach Copper Campus-Cable	JH693A
HPE X240 10G SFP+ to SFP+ 1.2m Direct Attach Copper Campus-Cable	JH694A
HPE X240 10G SFP+ to SFP+ 3m Direct Attach Copper Campus-Cable	JH695A
HPE X2A0 10G SFP+ to SFP+ 7m Active Optical Cable	JL290A
HPE X2A0 10G SFP+ to SFP+ 10m Active Optical Cable	JL291A
HPE X2A0 10G SFP+ to SFP+ 20m Active Optical Cable	JL292A

Note 4 Localization (Wall Power Cord) required on orders without #B2B, #B2C (PDU Power Cord) . (See Localization Menu)
REMARK: When Switches/Routers are Factory Racked, Then #B2B, or #B2C should be the Defaulted Power Cable option on the Switches/Routers.

Note 7 If HPE CTO Switch Chassis is selected for Rack Level Integration, Then the Switch needs to integrate (with #0D1) to the Rack.

Remarks: Drop down under power supply should offer the following options and results:
 Switch/Router/Power Supply to PDU Power Cord - #B2B in North America, Mexico, Taiwan, and Japan or #B2C ROW. (Watson Default B2B or B2C for Rack Level CTO)
 Switch/Router/Power Supply to Wall Power Cord - Localized Option (Watson Default for BTO and Box Level CTO)

Clic UNB - If an option is ordered with #0D1/#B01, then the switch must have #0D1 option.

Transceivers

SFP Transceivers

HPE X115 100M SFP LC FX Transceiver	JD102B
HPE X110 100M SFP LC LX Transceiver	JD120B
HPE X110 100M SFP LC LH40 Transceiver	JD090A
HPE X110 100M SFP LC LH80 Transceiver	JD091A
HPE X115 100M SFP LC BX 10-U Transceiver	JD100A
HPE X115 100M SFP LC BX 10-D Transceiver	JD101A
HPE X120 1G SFP LC SX Transceiver	JD118B
HPE X120 1G SFP LC LX Transceiver	JD119B
HPE X120 1G SFP RJ45 1000BASE-T Transceiver	JD089B
HPE X120 1G SFP LC BX 10-U Transceiver	JD098B
HPE X120 1G SFP LC BX 10-D Transceiver	JD099B
HPE X120 1G SFP LC LH40 1550nm Transceiver	JD062A
HPE X125 1G SFP LC LH40 1310nm Transceiver	JD061A
HPE X125 1G SFP LC LH70 Transceiver	JD063B
HPE X120 1G SFP LC LH100 Transceiver	JD103A

SFP+ Transceivers

HPE X130 10G SFP+ LC SR Transceiver	JD092B
HPE X130 10G SFP+ LC LR Transceiver	JD094B

Configuration

HPE FlexNetwork X240 10G SFP+ to SFP+ 0.65m Direct Attach Copper Cable	JD095C
HPE FlexNetwork X240 10G SFP+ to SFP+ 1.2m Direct Attach Copper Cable	JD096C
HPE FlexNetwork X240 10G SFP+ to SFP+ 3m Direct Attach Copper Cable	JD097C
HPE FlexNetwork X240 10G SFP+ to SFP+ 5m Direct Attach Copper Cable	JG081C
HPE X240 10G SFP+ to SFP+ 0.65m Direct Attach Copper Campus-Cable	JH693A
HPE X240 10G SFP+ to SFP+ 1.2m Direct Attach Copper Campus-Cable	JH694A
HPE X240 10G SFP+ to SFP+ 3m Direct Attach Copper Campus-Cable	JH695A
HPE X2A0 10G SFP+ 7m AOC Cable	JL290A
HPE X2A0 10G SFP+ 10m AOC Cable	JL291A
HPE X2A0 10G SFP+ 20m AOC Cable	JL292A

Cables

Multi-Mode Cables

HPE LC to LC Multi-mode OM3 2-Fiber 0.5m 1-Pack Fiber Optic Cable	AJ833A
HPE LC to LC Multi-mode OM3 2-Fiber 1.0m 1-Pack Fiber Optic Cable	AJ834A
HPE LC to LC Multi-mode OM3 2-Fiber 2.0m 1-Pack Fiber Optic Cable	AJ835A
HPE LC to LC Multi-mode OM3 2-Fiber 5.0m 1-Pack Fiber Optic Cable	AJ836A
HPE LC to LC Multi-mode OM3 2-Fiber 15.0m 1-Pack Fiber Optic Cable	AJ837A
HPE LC to LC Multi-mode OM3 2-Fiber 30.0m 1-Pack Fiber Optic Cable	AJ838A
HPE LC to LC Multi-mode OM3 2-Fiber 50.0m 1-Pack Fiber Optic Cable	AJ839A
HPE Premier Flex LC/LC Multi-mode OM4 2 fiber 1m Cable	QK732A
HPE Premier Flex LC/LC Multi-mode OM4 2 fiber 2m Cable	QK733A
HPE Premier Flex LC/LC Multi-mode OM4 2 fiber 5m Cable	QK734A
HPE Premier Flex LC/LC Multi-mode OM4 2 fiber 15m Cable	QK735A
HPE Premier Flex LC/LC Multi-mode OM4 2 fiber 30m Cable	QK736A
HPE Premier Flex LC/LC Multi-mode OM4 2 fiber 50m Cable	QK737A

Internal Power Supplies

(JG933A Switch Only) (std 0 // max 2) User Selection (min 1 // max 2) per switch enclosure

HPE FlexNetwork 5500 150WDC Power Supply	JD366A See Configuration NOTE:4
HPE X361 150W 48-60VDC to 12VDC Power Supply	JD366B See Configuration NOTE:4
HP 5500 150WAC Power Supply <ul style="list-style-type: none"> includes 1 x c13, 910w 	JD362A See Configuration NOTE:2, 3, 4
PDU Cable NA/MEX/TW/JP <ul style="list-style-type: none"> C15 PDU Jumper Cord (NA/MEX/TW/JP) 	JD362A#B2B

Configuration

PDU Cable ROW	JD362A#B2C
<ul style="list-style-type: none"> C15 PDU Jumper Cord (ROW) 	
High Volt Switch to Wall Power Cord	JD362A#B2E
<ul style="list-style-type: none"> NEMA L6-20P Cord (NA/MEX/JP/TW) 	
HPE X361 150W 100-240VAC to 12VDC Power Supply	JD362B
<ul style="list-style-type: none"> includes 1 x c13, 910w 	See Configuration NOTE:2, 3, 4
PDU Cable NA/MEX/TW/JP	JD362B#B2B
<ul style="list-style-type: none"> C13 PDU Jumper Cord (NA/MEX/TW/JP) 	
PDU Cable ROW	JD362B#B2C
<ul style="list-style-type: none"> C13 PDU Jumper Cord (ROW) 	
High Volt Switch to Wall Power Cord	JD362B#B2E
<ul style="list-style-type: none"> HPE 2.3M C13 to NEMA L6-20P Power Cord (J9936A) 	
No Power Cord	JD362B#AC3
<ul style="list-style-type: none"> No Localized Power Cord Selected 	

Configuration Rules:

- Note 2** If #B2E is selected Then replace Localized option with #B2E for power supply and with #B2E for switch . (Offered only in North America, Mexico, Taiwan, and Japan)
- Note 3** Localization (Wall Power Cord) required on orders without #B2B, #B2C (PDU Power Cord) . (See Localization Menu)
REMARK: When Switches/Routers are Factory Racked, Then #B2B, or #B2C should be the Defaulted Power Cable option on the Switches/Routers.
- Note 4** Not supported on JG932A, JG934A, JG936A, JG937A, JG938A, JG939A, JG940A, JG941A, JG975A, JG976A, JG977A, JG978A.
- Remarks:** Drop down under power supply should offer the following options and results:
Switch/Router/Power Supply to PDU Power Cord - #B2B in North America, Mexico, Taiwan, and Japan or #B2C ROW. (Watson Default B2B or B2C for Rack Level CTO)
Switch/Router/Power Supply to Wall Power Cord - Localized Option (Watson Default for BTO and Box Level CTO)
High Volt Switch/Router/Power Supply to Wall Power Cord - #B2E Option. (Offered only in North America, Mexico, Taiwan, and Japan)

Switch Enclosure Options

External/Redundant Power Supplies

HPE RPS 800 Redundant Power Supply	JD183A
<ul style="list-style-type: none"> Height = 1U includes 1 x c13, 800w 	See Configuration NOTE:2, 3, 5, 7

Configuration

HPE RPS1600 Redundant Power System

- Height = 1U
- includes 1 x c13, 1600w and Power Supply port

JG136A
See Configuration
NOTE:2, 3, 6

HPE RPS1600 1600W AC Power Supply

- Installs into JG136A only

JG137A
See Configuration
NOTE:1, 6

Configuration Rules:

- Note 1** If this power supply is selected, The JG136A - HPE A-RPS1600 Redundant Power System must be on order or onsite.
- Note 2** Localization required. (See Localization Menu for list.)
- Note 3** Only 1 JD183A or JG136A can be connected per switch.
- Note 5** Supported on JG934A, JG939A, JG976A
- Note 6** Supported on JG934A, JG976A, JG933A, JG936A, JG977A, JG937A, JG978A, JG939A, JG940A, JG941A.
- Note 7** Supported on JG933A only when connected to DC Power Supply JD366A/B with cable JD186A.

External/Redundant Power Cables

HPE X290 500 V 1m RPS Cable

JD186A
See Configuration
NOTE:1

HPE X290 1000 A JD5 2m RPS Cable

JD187A
See Configuration
NOTE:2

HPE X290 1000 A JD5 NonPoE 2m RPS Cable

JD188A
See Configuration
NOTE:3

Configuration Rules:

- Note 1** Supported on JG934A, JG939A, JG976A and JD366A/B when used in JG933A to connect to JD183A.
- Note 2** Supported on JG936A, JG977A, JG937A, JG978A, JG940A, JG941A to connect to JG136A.
- Note 3** Supported on JG934A, JG976A, JG933A, JG939A to connect to JG136A.

Technical Specifications

HPE FlexNetwork 5130 24G 4SFP+ EI Switch (JG932A)

I/O ports and slots	24 RJ-45 autosensing 10/100/1000 ports (IEEE 802.3 Type 10BASE-T, IEEE 802.3u Type 100BASE-TX, IEEE 802.3ab Type 1000BASE-T); Duplex: 10BASE-T/100BASE-TX: half or full; 1000BASE-T: full only	
	4 SFP+ fixed 1000/10000 SFP+ ports	
Additional ports and slots	1 RJ-45 serial console port	
Physical characteristics	Dimensions	17.32(w) x 6.3(d) x 1.72(h) in (44 x 16 x 4.36 cm) (1U height)
	Weight	11.02 lb (5 kg)
Memory and processor	1 GB SDRAM, 512 MB flash; packet buffer size: 1.5 MB	
Mounting and enclosure	Mounts in an EIA standard 19-inch telco rack or equipment cabinet (hardware included)	
Performance	IPv6 Ready Certified	
	1000 Mb Latency	< 5 μ s
	10 Gbps Latency	< 3 μ s
	Throughput	96 Mpps
	Routing/Switching capacity	128 Gbps
	Routing table size	512 entries (IPv4), 256 entries (IPv6)
	MAC address table size	16384 entries
Environment	Operating temperature	23°F to 113°F (-5°C to 45°C)
	Operating relative humidity	10% to 90%, noncondensing
	Nonoperating/Storage temperature	-40°F to 158°F (-40°C to 70°C)
	Nonoperating/Storage relative humidity	5% to 95%, noncondensing
	Acoustic	High-speed fan: 39.7 dB; ISO 7779
Electrical characteristics	Frequency	50/60 Hz
	Maximum heat dissipation	64/88 BTU/hr (67.52/92.84 kJ/hr)
	Voltage	100 - 240 VAC, rated
	Current	2 A
	Maximum power rating	26 W
	Idle power	19 W
	Notes	<p>Idle power is the actual power consumption of the device with no ports connected.</p> <p>Maximum power rating and maximum heat dissipation are the worst-case theoretical maximum numbers provided for planning the infrastructure with fully loaded PoE (if equipped), 100% traffic, all ports plugged in, and all modules populated.</p>
Safety	UL 60950-1; EN 60825-1 Safety of Laser Products-Part 1; EN 60825-2 Safety of Laser Products-Part 2; IEC 60950-1; CAN/CSA-C22.2 No. 60950-1; Anatel; ULAR; GOST; EN 60950-1/A11; FDA 21 CFR Subchapter J; NOM; ROHS Compliance	
Emissions	EMC Directive 2004/108/EC; FCC (CFR 47, Part 15) Class A; EN 61000-4-11:2004; ANSI C63.4-2009; EN	

Technical Specifications

61000-3-3:2008; VCCI V-4/2012.04; EN 6100-3-2:2006+A1:2009 + A2:2009; EN 61000-3-2:2006+A1:2009+A2:2009 ; EN 61000-4-3:2006; EN 61000-4-4:2012; EN 61000-4-5:2006; EN 61000-4-6:2009; AS/NZS CISPR 22:2009 Class A; CISPR 22:2008 Class A; EN 55022:2010 Class A; EN 61000-4-29: 2000; CISPR 24:2010; EN 300 386 V1.6.1; VCCI V-3/2013.04 Class A

Immunity	Generic	EN 55024
	ESD	EN300 386
Management	IMC - Intelligent Management Center; command-line interface; Web browser; SNMP Manager	
Services	Refer to the Hewlett Packard Enterprise website at http://www.hpe.com/networking/services for details on the service-level descriptions and product numbers. For details about services and response times in your area, please contact your local Hewlett Packard Enterprise sales office.	

HPE FlexNetwork 5130 24G SFP 4SFP+ EI Switch (JG933A)

I/O ports and slots	16 SFP 100/1000 Mbps ports	
	8 SFP dual-personality ports - 10/100/1000BASE-T RJ-45 or 100/1000BASE-X Combo Ports	
	4 SFP+ fixed 1000/10000 SFP+ ports	
Additional ports and slots	1 RJ-45 serial console port	
Power supplies	2 power supply slots	
	1 minimum power supply required (ordered separately)	
Physical characteristics	Dimensions	17.32(w) x 14.17(d) x 1.72(h) in (44 x 36 x 4.36 cm) (1U height)
	Weight	17.64 lb (8 kg)
Memory and processor	1 GB SDRAM, 512 MB flash; packet buffer size: 1.5 MB	
Mounting and enclosure	Mounts in an EIA standard 19-inch telco rack or equipment cabinet (hardware included)	
Performance	IPv6 Ready Certified	
	1000 Mb Latency	< 5 μ s
	10 Gbps Latency	< 3 μ s
	Throughput	96 Mpps
	Routing/Switching capacity	128 Gbps
	Routing table size	512 entries (IPv4), 256 entries (IPv6)
	MAC address table size	16384 entries
	Environment	Operating temperature
Operating relative humidity		10% to 90%, noncondensing
Nonoperating/Storage temperature		-40°F to 158°F (-40°C to 70°C)
Nonoperating/Storage relative humidity		5% to 95%, noncondensing
Electrical characteristics	Acoustic	Low-speed fan: 47.1 dB, High-speed fan: 50.7 dB; ISO 7779
	Frequency	50/60 Hz
	Maximum heat dissipation	102/204 BTU/hr (107.61/215.22 kJ/hr), for AC Powered units. For DC powered units heat dissipation is 130 BTU/hr min, 232 BTU/hr max.
	Voltage	100 - 240 VAC -48 to -60 VDC
	Current	5 A
	Maximum power rating	60 W

Technical Specifications

	Idle power	30 W
	Notes	<p>Idle power is the actual power consumption of the device with no ports connected.</p> <p>Maximum power rating and maximum heat dissipation are the worst-case theoretical maximum numbers provided for planning the infrastructure with fully loaded PoE (if equipped), 100% traffic, all ports plugged in, and all modules populated.</p> <p>Power Ratings for AC Power Supply indicated above.</p> <p>For DC input power, Idle Power is 38W and Max is 68W.</p> <p>DC Max input current is 8A. Units are supplied without a power supply. Customer must buy 1 or 2 JD362B (AC) or JD366B (DC) power supply.</p>
Safety		UL 60950-1; EN 60825-1 Safety of Laser Products-Part 1; EN 60825-2 Safety of Laser Products-Part 2; IEC 60950-1; CAN/CSA-C22.2 No. 60950-1; Anatel; ULAR; GOST; EN 60950-1/A11; FDA 21 CFR Subchapter J; NOM; ROHS Compliance
Emissions		EMC Directive 2004/108/EC; FCC (CFR 47, Part 15) Class A; EN 61000-4-11:2004; ANSI C63.4-2009; EN 61000-3-3:2008; VCCI V-4/2012.04; EN 6100-3-2:2006+A1:2009 + A2:2009; EN 61000-3-2:2006+A1:2009+A2:2009 ; EN 61000-4-3:2006; EN 61000-4-4:2012; EN 61000-4-5:2006; EN 61000-4-6:2009; AS/NZS CISPR 22:2009 Class A; CISPR 22:2008 Class A; EN 55022:2010 Class A; EN 61000-4-29: 2000; CISPR 24:2010; EN 300 386 V1.6.1; VCCI V-3/2013.04 Class A
Immunity	Generic	EN 55024
	ESD	EN300 386
Management		IMC - Intelligent Management Center; command-line interface; Web browser; SNMP Manager
Services		Refer to the Hewlett Packard Enterprise website at http://www.hpe.com/networking/services for details on the service-level descriptions and product numbers. For details about services and response times in your area, please contact your local Hewlett Packard Enterprise sales office.

HPE FlexNetwork 5130 48G 4SFP+ EI Switch (JG934A)

I/O ports and slots		48 RJ-45 autosensing 10/100/1000 ports (IEEE 802.3 Type 10BASE-T, IEEE 802.3u Type 100BASE-TX, IEEE 802.3ab Type 1000BASE-T); Duplex: 10BASE-T/100BASE-TX: half or full; 1000BASE-T: full only
		4 SFP+ fixed 1000/10000 SFP+ ports
Additional ports and slots		1 RJ-45 serial console port
Physical characteristics	Dimensions	17.32(w) x 10.24(d) x 1.72(h) in (44 x 26 x 4.36 cm) (1U height)
	Weight	11.02 lb (5 kg)
Memory and processor		1 GB SDRAM, 512 MB flash; packet buffer size: 3 MB
Mounting and enclosure		Mounts in an EIA standard 19-inch telco rack or equipment cabinet (hardware included)
Performance		IPv6 Ready Certified
	1000 Mb Latency	< 5 μ s
	10 Gbps Latency	< 3 μ s
	Throughput	130.9 Mpps
	Routing/Switching capacity	176 Gbps
	Routing table size	512 entries (IPv4), 256 entries (IPv6)
	MAC address table size	16384 entries
Environment	Operating temperature	23°F to 113°F (-5°C to 45°C)
	Operating relative humidity	10% to 90%, noncondensing

Technical Specifications

	Nonoperating/Storage temperature	-40°F to 158°F (-40°C to 70°C)
	Nonoperating/Storage relative humidity	5% to 95%, noncondensing
	Acoustic	Low-speed fan: 38.4 dB, High-speed fan: 47.0 dB; ISO 7779
Electrical characteristics	Frequency	50/60 Hz
	Maximum heat dissipation	130/153 BTU/hr (137.15/161.42 kJ/hr), For AC powered units. For DC powered units heat dissipation is 130 BTU/hr min, 171 BTU/hr max
	Voltage	100 - 240 VAC -48 to -60 VDC
	Current	10 A
	Maximum power rating	45 W
	Idle power	38 W
	Notes	<p>Idle power is the actual power consumption of the device with no ports connected.</p> <p>Maximum power rating and maximum heat dissipation are the worst-case theoretical maximum numbers provided for planning the infrastructure with fully loaded PoE (if equipped), 100% traffic, all ports plugged in, and all modules populated.</p> <p>Power ratings for AC power indicated above. Current used is 5A Max when DC Power used. For DC input power, idle power is 38W, maximum DC power used is 50W.</p> <p>When supplemented with the use of an HPE RPS1600 or RPS 800 Redundant Power System, up to 54 W of DC power can be supplied. DC input voltage range is -48 to -60 VDC. Total DC input power is 36 W typical and 54 W maximum. DC input voltage range is -48 VDC to -60 VDC. DC input source is the HPE RPS1600 or RPS 800.</p>
Safety		UL 60950-1; EN 60825-1 Safety of Laser Products-Part 1; EN 60825-2 Safety of Laser Products-Part 2; IEC 60950-1; CAN/CSA-C22.2 No. 60950-1; Anatel; ULAR; GOST; EN 60950-1/A11; FDA 21 CFR Subchapter J; NOM; ROHS Compliance
Emissions		EMC Directive 2004/108/EC; FCC (CFR 47, Part 15) Class A; EN 61000-4-11:2004; ANSI C63.4-2009; EN 61000-3-3:2008; VCCI V-4/2012.04; EN 6100-3-2:2006+A1:2009 + A2:2009; EN 61000-3-2:2006+A1:2009+A2:2009 ; EN 61000-4-3:2006; EN 61000-4-4:2012; EN 61000-4-5:2006; EN 61000-4-6:2009; AS/NZS CISPR 22:2009 Class A; CISPR 22:2008 Class A; EN 55022:2010 Class A; EN 61000-4-29: 2000; CISPR 24:2010; EN 300 386 V1.6.1; VCCI V-3/2013.04 Class A
Immunity	Generic	EN 55024
	ESD	EN300 386
Management Services		IMC - Intelligent Management Center; command-line interface; Web browser; SNMP Manager Refer to the Hewlett Packard Enterprise website at http://www.hpe.com/networking/services for details on the service-level descriptions and product numbers. For details about services and response times in your area, please contact your local Hewlett Packard Enterprise sales office.

HPE FlexNetwork 5130 24G PoE+ 4SFP+ (370W) EI Switch (JG936A)

I/O ports and slots	24 RJ-45 autosensing 10/100/1000 ports (IEEE 802.3 Type 10BASE-T, IEEE 802.3u Type 100BASE-TX, IEEE 802.3ab Type 1000BASE-T); Duplex: 10BASE-T/100BASE-TX: half or full; 1000BASE-T: full only 4 SFP+ fixed 1000/10000 SFP+ ports
Additional ports and slots	1 RJ-45 serial console port

Technical Specifications

Physical characteristics	Dimensions	17.32(w) x 11.81(d) x 1.72(h) in (44 x 30 x 4.37 cm) (1U height)	
	Weight	17.64 lb (8 kg)	
Memory and processor	1 GB SDRAM, 512 MB flash; packet buffer size: 1.5 MB		
Mounting and enclosure	Mounts in an EIA standard 19-inch telco rack or equipment cabinet (hardware included)		
Performance	IPv6 Ready Certified		
	1000 Mb Latency	< 5 μ s	
	10 Gbps Latency	< 3 μ s	
	Throughput	96 Mpps	
	Routing/Switching capacity	128 Gbps	
	Routing table size	512 entries (IPv4), 256 entries (IPv6)	
	MAC address table size	16384 entries	
Environment	Operating temperature	23°F to 113°F (-5°C to 45°C)	
	Operating relative humidity	10% to 90%, noncondensing	
	Nonoperating/Storage temperature	-40°F to 158°F (-40°C to 70°C)	
	Nonoperating/Storage relative humidity	5% to 95%, noncondensing	
	Acoustic	Low-speed fan: 49.8 dB, High-speed fan: 52.9 dB; ISO 7779	
Electrical characteristics	Frequency	50/60 Hz	
	Maximum heat dissipation	102/1569 BTU/hr (107.61/1655.29 kJ/hr), for AC Power. For DC Power min heat dissipation is 85 BTU/hr and max heat dissipation is 2695 BTU/hr	
	Voltage	100 - 240 VAC, -54 to -57 VDC	
	Current	10 A	
	Maximum power rating	460 W	
	Idle power	30 W	
	PoE power	370 W PoE+	
	Notes	<p>Maximum power rating and maximum heat dissipation are the worst-case theoretical maximum numbers provided for planning the infrastructure with fully loaded PoE (if equipped), 100% traffic, all ports plugged in, and all modules populated. PoE Power is the power supplied by the internal power supply. When supplemented with the use of an HPE RPS1600 Redundant Power System, up to 740 W of PoE+ can be supplied.</p> <p>Max current rating for DC power is 25A. AC Input power is 30W typical, and 460W max(including 370W PoE+ consumption. DC Input voltage range is -54 to -57VDC. Total DC input power is 25W Typical and 790W with 740W PoE+ Power consumption. DC Input voltage range is -54VDC to -57VDC. DC Input Source is the HPE RPS1600.</p>	
	Safety	UL 60950-1; EN 60825-1 Safety of Laser Products-Part 1; EN 60825-2 Safety of Laser Products-Part 2; IEC 60950-1; CAN/CSA-C22.2 No. 60950-1; Anatel; ULAR; GOST; EN 60950-1/A11; FDA 21 CFR Subchapter J; NOM; ROHS Compliance	
	Emissions	EMC Directive 2004/108/EC; FCC (CFR 47, Part 15) Class A; EN 61000-4-11:2004; ANSI C63.4-2009; EN 61000-3-3:2008; VCCI V-4/2012.04; EN 6100-3-2:2006+A1:2009 + A2:2009; EN 61000-3-2:2006+A1:2009+A2:2009 ; EN 61000-4-3:2006; EN 61000-4-4:2012; EN 61000-4-5:2006; EN	

Technical Specifications

61000-4-6:2009; AS/NZS CISPR 22:2009 Class A; CISPR 22:2008 Class A; EN 55022:2010 Class A; EN 61000-4-29: 2000; CISPR 24:2010; EN 300 386 V1.6.1; VCCI V-3/2013.04 Class A

Immunity	Generic	EN 55024
	ESD	EN300 386
Management	IMC - Intelligent Management Center; command-line interface; Web browser; SNMP Manager.	
Services	Refer to the Hewlett Packard Enterprise website at http://www.hpe.com/networking/services for details on the service-level descriptions and product numbers. For details about services and response times in your area, please contact your local Hewlett Packard Enterprise sales office.	

HPE FlexNetwork 5130 48G PoE+ 4SFP+ (370W) EI Switch (JG937A)

I/O ports and slots	48 RJ-45 autosensing 10/100/1000 ports (IEEE 802.3 Type 10BASE-T, IEEE 802.3u Type 100BASE-TX, IEEE 802.3ab Type 1000BASE-T); Duplex: 10BASE-T/100BASE-TX: half or full; 1000BASE-T: full only	
	4 SFP+ fixed 1000/10000 SFP+ ports	
Additional ports and slots	1 RJ-45 serial console port	
Physical characteristics	Dimensions	17.32(w) x 14.17(d) x 1.72(h) in (44 x 36 x 4.36 cm) (1U height)
	Weight	17.64 lb (8 kg)
Memory and processor	1 GB SDRAM, 512 MB flash; packet buffer size: 3 MB	
Mounting and enclosure	Mounts in an EIA standard 19-inch telco rack or equipment cabinet (hardware included)	
Performance	IPv6 Ready Certified	
	1000 Mb Latency	< 5 μ s
	10 Gbps Latency	< 3 μ s
	Throughput	130.9 Mpps
	Routing/Switching capacity	176 Gbps
	Routing table size	512 entries (IPv4), 256 entries (IPv6)
	MAC address table size	16384 entries
Environment	Operating temperature	23°F to 113°F (-5°C to 45°C)
	Operating relative humidity	10% to 90%, noncondensing
	Nonoperating/Storage temperature	-40°F to 158°F (-40°C to 70°C)
	Nonoperating/Storage relative humidity	5% to 95%, noncondensing
	Acoustic	Low-speed fan: 50.6 dB, High-speed fan: 54.6 dB; ISO 7779
Electrical characteristics	Frequency	50/60 Hz
	Maximum heat dissipation	160/1671 BTU/hr (168.8/1762.91 kJ/hr), for AC power. For DC power min heat dissipation is 147 BTU/hr and 3037 BTU/hr max.
	Voltage	100 - 240 VAC -54 to -57 VDC
	Current	10 A
	Maximum power rating	490 W
	Idle power	47 W
	PoE power	370 W PoE+

Technical Specifications

	Notes	<p>Idle power is the actual power consumption of the device with no ports connected. Maximum power rating and maximum heat dissipation are the worst-case theoretical maximum numbers provided for planning the infrastructure with fully loaded PoE (if equipped), 100% traffic, all ports plugged in, and all modules populated. PoE Power is the power supplied by the internal power supply. When supplemented with the use of an HPE RPS1600 Redundant Power System, up to 740 W of PoE+ can be supplied.</p> <p>Max current rating for DC power is 25A. AC Input power is 47W typical, and 490W max(including 370W PoE+ consumption. DC Input voltage range is -54 to -57VDC. Total DC input power is 43W typical and 890W with 800W PoE+ Power consumption. DC Input voltage range is -54VDC to -57VDC. DC Input Source is the HPE RPS1600.</p>
Safety	UL 60950-1; EN 60825-1 Safety of Laser Products-Part 1; EN 60825-2 Safety of Laser Products-Part 2; IEC 60950-1; CAN/CSA-C22.2 No. 60950-1; Anatel; ULAR; GOST; EN 60950-1/A11; FDA 21 CFR Subchapter J; NOM; ROHS Compliance	
Emissions	EMC Directive 2004/108/EC; FCC (CFR 47, Part 15) Class A; EN 61000-4-11:2004; ANSI C63.4-2009; EN 61000-3-3:2008; VCCI V-4/2012.04; EN 6100-3-2:2006+A1:2009 + A2:2009; EN 61000-3-2:2006+A1:2009+A2:2009 ; EN 61000-4-3:2006; EN 61000-4-4:2012; EN 61000-4-5:2006; EN 61000-4-6:2009; AS/NZS CISPR 22:2009 Class A; CISPR 22:2008 Class A; EN 55022:2010 Class A; EN 61000-4-29: 2000; CISPR 24:2010; EN 300 386 V1.6.1; VCCI V-3/2013.04 Class A	
Immunity	Generic	EN 55024
	ESD	EN300 386
Management	IMC - Intelligent Management Center; command-line interface; Web browser; SNMP Manager	
Services	Refer to the Hewlett Packard Enterprise website at http://www.hpe.com/networking/services for details on the service-level descriptions and product numbers. For details about services and response times in your area, please contact your local Hewlett Packard Enterprise sales office.	

HPE FlexNetwork 5130 24G 2SFP+ 2XGT EI Switch (JG938A)

I/O ports and slots	24 RJ-45 autosensing 10/100/1000 ports (IEEE 802.3 Type 10BASE-T, IEEE 802.3u Type 100BASE-TX, IEEE 802.3ab Type 1000BASE-T); Duplex: 10BASE-T/100BASE-TX: half or full; 1000BASE-T: full only	
	2 SFP+ fixed 1000/10000 SFP+ ports	
	2 RJ-45 1/10GBASE-T ports	
Additional ports and slots	1 RJ-45 serial console port	
Physical characteristics	Dimensions	17.32(w) x 6.3(d) x 1.72(h) in (44 x 16 x 4.37 cm) (1U height)
	Weight	6.61 lb (3 kg)
Memory and processor	1 GB SDRAM; Packet buffer size: 1.5 MB, 512 MB flash	
Mounting and enclosure	Mounts in an EIA standard 19-inch telco rack or equipment cabinet (hardware included)	
Performance	IPv6 Ready Certified	
	1000 Mb Latency	< 5 μ s
	10 Gbps Latency	< 3 μ s
	Throughput	up to 96 Mpps
	Routing/Switching capacity	128 Gbps
	Routing table size	512 entries (IPv4), 256 entries (IPv6)
	MAC address table size	16384 entries
Environment	Operating temperature	23°F to 113°F (-5°C to 45°C)

Technical Specifications

	Operating relative humidity	10% to 90%, noncondensing
	Nonoperating/Storage temperature	-40°F to 158°F (-40°C to 70°C)
	Nonoperating/Storage relative humidity	5% to 95%, noncondensing
	Acoustic	Low-speed fan: 19 dB, High-speed fan: 44.5 dB; ISO 7779
Electrical characteristics	Frequency	50/60 Hz
	Maximum heat dissipation	68/116 BTU/hr (71.74/122.38 kJ/hr) for AC power.
	Voltage	100 - 240 VAC
	Current	2A
	Maximum power rating	34 W
	Idle power	20 W
	Notes	Idle power is the actual power consumption of the device with no ports connected. Maximum power rating and maximum heat dissipation are the worst-case theoretical maximum numbers provided for planning the infrastructure with fully loaded PoE (if equipped), 100% traffic, all ports plugged in, and all modules populated. Idle power is the actual power consumption of the device with no ports connected. Maximum power rating and maximum heat dissipation are the worst-case theoretical maximum numbers provided for planning the infrastructure with fully loaded PoE (if equipped), 100% traffic, all ports plugged in, and all modules populated.
Safety		UL 60950-1; EN 60825-1 Safety of Laser Products-Part 1; EN 60825-2 Safety of Laser Products-Part 2; IEC 60950-1; CAN/CSA-C22.2 No. 60950-1; Anatel; ULAR; GOST; EN 60950-1/A11; FDA 21 CFR Subchapter J; NOM; ROHS Compliance
Emissions		EMC Directive 2004/108/EC; FCC (CFR 47, Part 15) Class A; EN 61000-4-11:2004; ANSI C63.4-2009; EN 61000-3-3:2008; VCCI V-4/2012.04; EN 6100-3-2:2006+A1:2009 + A2:2009; EN 61000-3-2:2006+A1:2009+A2:2009 ; EN 61000-4-3:2006; EN 61000-4-4:2012; EN 61000-4-5:2006; EN 61000-4-6:2009; AS/NZS CISPR 22:2009 Class A; CISPR 22:2008 Class A; EN 55022:2010 Class A; EN 61000-4-29: 2000; CISPR 24:2010; EN 300 386 V1.6.1; VCCI V-3/2013.04 Class A
Immunity	Generic	EN 55024
	ESD	EN300 386
Management		IMC - Intelligent Management Center; Command-line interface; Web browser; SNMP manager
Services		Refer to the Hewlett Packard Enterprise website at http://www.hpe.com/networking/services for details on the service-level descriptions and product numbers. For details about services and response times in your area, please contact your local Hewlett Packard Enterprise sales office.

HPE FlexNetwork 5130 48G 2SFP+ 2XGT EI Switch (JG939A)

I/O ports and slots	48 RJ-45 autosensing 10/100/1000 ports (IEEE 802.3 Type 10BASE-T, IEEE 802.3u Type 100BASE-TX, IEEE 802.3ab Type 1000BASE-T); Duplex: 10BASE-T/100BASE-TX: half or full; 1000BASE-T: full only 2 SFP+ fixed 1000/10000 SFP+ ports 2 RJ-45 1/10GBASE-T ports
Additional ports and slots	1 RJ-45 serial console port
Physical characteristics	Dimensions 17.32(w) x 10.63(d) x 1.72(h) in (44 x 27 x 4.37 cm) (1U height)

Technical Specifications

	Weight	11.02 lb (5 kg)
Memory and processor	1 GB SDRAM; Packet buffer size: 1.5 MB, 512 MB flash	
Mounting and enclosure	Mounts in an EIA standard 19-inch telco rack or equipment cabinet (hardware included)	
Performance	IPv6 Ready Certified	
	1000 Mb Latency	< 5 μ s
	10 Gbps Latency	< 3 μ s
	Throughput	up to 130.9 Mpps
	Routing/Switching capacity	176 Gbps
	Routing table size	512 entries (IPv4), 256 entries (IPv6)
	MAC address table size	16384 entries
Environment	Operating temperature	23°F to 113°F (-5°C to 45°C)
	Operating relative humidity	10% to 90%, noncondensing
	Nonoperating/Storage temperature	-40°F to 158°F (-40°C to 70°C)
	Nonoperating/Storage relative humidity	5% to 95%, noncondensing
	Acoustic	Low-speed fan: 43.1 dB, High-speed fan: 53.4 dB; ISO 7779
Electrical characteristics	Frequency	50/60 Hz
	Maximum heat dissipation	122/184 BTU/hr (128.71/194.12 kJ/hr)
	Voltage	100 - 240 VAC -48 to -60 VDC
	Current	2 A
	Maximum power rating	54 W
	Idle power	36 W
	Notes	Power ratings for AC power indicated above. Current used is 5A Max when DC Power used. When supplemented with the use of an HPE RPS1600 or RPS800 Redundant Power System, up to 54 W of DC power can be supplied. DC input voltage range is -48 to -60 VDC. Total DC input power is 36 W typical and 54 W maximum. DC input voltage range is -48 VDC to -60 VDC. DC input source is the HPE RPS1600 or RPS800.
Safety	UL 60950-1; EN 60825-1 Safety of Laser Products-Part 1; EN 60825-2 Safety of Laser Products-Part 2; IEC 60950-1; CAN/CSA-C22.2 No. 60950-1; Anatel; ULAR; GOST; EN 60950-1/A11; FDA 21 CFR Subchapter J; NOM; ROHS Compliance	
Emissions	EMC Directive 2004/108/EC; FCC (CFR 47, Part 15) Class A; EN 61000-4-11:2004; ANSI C63.4-2009; EN 61000-3-3:2008; VCCI V-4/2012.04; EN 6100-3-2:2006+A1:2009 + A2:2009; EN 61000-3-2:2006+A1:2009+A2:2009 ; EN 61000-4-3:2006; EN 61000-4-4:2012; EN 61000-4-5:2006; EN 61000-4-6:2009; AS/NZS CISPR 22:2009 Class A; CISPR 22:2008 Class A; EN 55022:2010 Class A; EN 61000-4-29: 2000; CISPR 24:2010; EN 300 386 V1.6.1; VCCI V-3/2013.04 Class A	
Immunity	Generic	EN 55024
	ESD	EN300 386
Management	IMC - Intelligent Management Center; Command-line interface; Web browser; SNMP manager	
Services	Refer to the Hewlett Packard Enterprise website at http://www.hpe.com/networking/services for details on the service-level descriptions and product numbers. For details about services and response times in your area, please contact your local Hewlett Packard Enterprise sales office.	

Technical Specifications

HPE FlexNetwork 5130 24G POE+ 2SFP+ 2XGT (370W) EI Switch (JG940A)

I/O ports and slots	24 RJ-45 autosensing 10/100/1000 ports (IEEE 802.3 Type 10BASE-T, IEEE 802.3u Type 100BASE-TX, IEEE 802.3ab Type 1000BASE-T); Duplex: 10BASE-T/100BASE-TX: half or full; 1000BASE-T: full only	
	2 SFP+ fixed 1000/10000 SFP+ ports	
	2 RJ-45 1/10GBASE-T ports	
Additional ports and slots	1 RJ-45 serial console port	
Physical characteristics	Dimensions	17.32(w) x 14.17(d) x 1.72(h) in (44 x 36 x 4.37 cm) (1U height)
	Weight	13.23 lb (6 kg)
Memory and processor	1 GB SDRAM; Packet buffer size: 1.5 MB, 512 MB flash	
Mounting and enclosure	Mounts in an EIA standard 19-inch telco rack or equipment cabinet (hardware included)	
Performance	IPv6 Ready Certified	
	1000 Mb Latency	< 5 μ s
	10 Gbps Latency	< 3 μ s
	Throughput	up to 96 Mpps
	Routing/Switching capacity	128 Gbps
	Routing table size	512 entries (IPv4), 256 entries (IPv6)
	MAC address table size	16384 entries
Environment	Operating temperature	23°F to 113°F (-5°C to 45°C)
	Operating relative humidity	10% to 90%, noncondensing
	Nonoperating/Storage temperature	-40°F to 158°F (-40°C to 70°C)
	Nonoperating/Storage relative humidity	5% to 95%, noncondensing
	Acoustic	Low-speed fan: 37.3 dB, High-speed fan: 47.1 dB; ISO 7779
Electrical characteristics	Frequency	50/60 Hz
	Maximum heat dissipation	105/1450 BTU/hr (159.3/1529.75 kJ/hr), for AC power. For DC Power 68 BTU/hr and max heat dissipation is 2627.3 BTU/hr
	Voltage	100 - 240 VAC -54 to -57 VDC
	Current	10 A
	Maximum power rating	425 W
	Idle power	31 W
	PoE power	370 W PoE+
	Notes	<p>PoE Power is the power supplied by the internal power supply. When supplemented with the use of an HPE RPS1600 Redundant Power System, up to 740 W of PoE+ can be supplied.</p> <p>Max current rating for DC power is 25A. AC Input power is 31W typical, and 425W max(including 370W PoE+ consumption). DC Input voltage range is -54 to -57VDC.</p> <p>Total DC input power is 20W Typical and 770W with 740W PoE+ Power consumption. DC Input Source is the HPE RPS1600.</p>

Technical Specifications

Safety	UL 60950-1; EN 60825-1 Safety of Laser Products-Part 1; EN 60825-2 Safety of Laser Products-Part 2; IEC 60950-1; CAN/CSA-C22.2 No. 60950-1; Anatel; ULAR; GOST; EN 60950-1/A11; FDA 21 CFR Subchapter J; NOM; ROHS Compliance	
Emissions	EMC Directive 2004/108/EC; FCC (CFR 47, Part 15) Class A; EN 61000-4-11:2004; ANSI C63.4-2009; EN 61000-3-3:2008; VCCI V-4/2012.04; EN 6100-3-2:2006+A1:2009 + A2:2009; EN 61000-3-2:2006+A1:2009+A2:2009 ; EN 61000-4-3:2006; EN 61000-4-4:2012; EN 61000-4-5:2006; EN 61000-4-6:2009; AS/NZS CISPR 22:2009 Class A; CISPR 22:2008 Class A; EN 55022:2010 Class A; EN 61000-4-29: 2000; CISPR 24:2010; EN 300 386 V1.6.1; VCCI V-3/2013.04 Class A	
Immunity	Generic	EN 55024
	ESD	EN300 386
Management	IMC - Intelligent Management Center; Command-line interface; Web browser; SNMP manager	
Services	Refer to the Hewlett Packard Enterprise website at http://www.hpe.com/networking/services for details on the service-level descriptions and product numbers. For details about services and response times in your area, please contact your local Hewlett Packard Enterprise sales office.	

HPE FlexNetwork 5130 48G POE+ 2SFP+ 2XGT (370W) EI Switch (JG941A)

I/O ports and slots	48 RJ-45 autosensing 10/100/1000 ports (IEEE 802.3 Type 10BASE-T, IEEE 802.3u Type 100BASE-TX, IEEE 802.3ab Type 1000BASE-T); Duplex: 10BASE-T/100BASE-TX: half or full; 1000BASE-T: full only	
	2 SFP+ fixed 1000/10000 SFP+ ports	
	2 RJ-45 1/10GBASE-T ports	
Additional ports and slots	1 RJ-45 serial console port	
Physical characteristics	Dimensions	17.32(w) x 16.54(d) x 1.72(h) in (44 x 42 x 4.37 cm) (1U height)
	Weight	15.43 lb (7 kg)
Memory and processor	1 GB SDRAM; Packet buffer size: 3 MB, 512 MB flash	
Mounting and enclosure	Mounts in an EIA standard 19-inch telco rack or equipment cabinet (hardware included)	
Performance	IPv6 Ready Certified	
	1000 Mb Latency	< 5 μ s
	10 Gbps Latency	< 3 μ s
	Throughput	up to 130.9 Mpps
	Routing/Switching capacity	176 Gbps
	Routing table size	512 entries (IPv4), 256 entries (IPv6)
	MAC address table size	16384 entries
Environment	Operating temperature	23°F to 113°F (-5°C to 45°C)
	Operating relative humidity	10% to 90%, noncondensing
	Nonoperating/Storage temperature	-40°F to 158°F (-40°C to 70°C)
	Nonoperating/Storage relative humidity	5% to 95%, noncondensing
	Acoustic	Low-speed fan: 47.3 dB, High-speed fan: 50 dB; ISO 7779
Electrical characteristics	Frequency	50/60 Hz
	Maximum heat dissipation	147/1603 BTU/hr (155.08/1691.17 kJ/hr), for AC power. For DC power min heat dissipation is 102 BTU/hr and max heat dissipation is 3105 BTU/hr

Technical Specifications

Voltage	100 - 240 VAC -54 to -57 VDC
Current	10 A
Maximum power rating	470 W
Idle power	43 W
PoE power	370 W PoE+
Notes	<p>PoE Power is the power supplied by the internal power supply. When supplemented with the use of an HPE RPS1600 Redundant Power System, up to 740 W of PoE+ can be supplied.</p> <p>Max current rating for DC power is 25A. AC Input power is 43W typical, and 470W max(including 370W PoE+ consumption. DC Input voltage range is -54 to -57VDC.</p> <p>Total DC input power is 30W typical and 910W with 800W PoE+ Power consumption. DC Input Source is the HPE RPS1600.</p>

Safety	UL 60950-1; EN 60825-1 Safety of Laser Products-Part 1; EN 60825-2 Safety of Laser Products-Part 2; IEC 60950-1; CAN/CSA-C22.2 No. 60950-1; Anatel; ULAR; GOST; EN 60950-1/A11; FDA 21 CFR Subchapter J; NOM; ROHS Compliance
Emissions	EMC Directive 2004/108/EC; FCC (CFR 47, Part 15) Class A; EN 61000-4-11:2004; ANSI C63.4-2009; EN 61000-3-3:2008; VCCI V-4/2012.04; EN 6100-3-2:2006+A1:2009 + A2:2009; EN 61000-3-2:2006+A1:2009+A2:2009 ; EN 61000-4-3:2006; EN 61000-4-4:2012; EN 61000-4-5:2006; EN 61000-4-6:2009; AS/NZS CISPR 22:2009 Class A; CISPR 22:2008 Class A; EN 55022:2010 Class A; EN 61000-4-29: 2000; CISPR 24:2010; EN 300 386 V1.6.1; VCCI V-3/2013.04 Class A
Immunity	<p>Generic EN 55024</p> <p>ESD EN300 386</p>
Management	IMC - Intelligent Management Center; Command-line interface; Web browser; SNMP manager
Services	Refer to the Hewlett Packard Enterprise website at http://www.hpe.com/networking/services for details on the service-level descriptions and product numbers. For details about services and response times in your area, please contact your local Hewlett Packard Enterprise sales office.

Standards and protocols (applies to all products in series)

Device Management	<p>RFC 1157 SNMPv1/v2c</p> <p>RFC 1305 NTPv3</p> <p>RFC 2573 (SNMPv3 Applications)</p> <p>RFC 2819 (RMON groups Alarm, Event, History and Statistics only)</p> <p>RFC 3416 (SNMP Protocol Operations v2)</p> <p>HTML and telnet management</p> <p>Multiple Configuration Files</p> <p>SNMP v3 and RMON RFC support</p> <p>SSHv1/SSHv2 Secure Shell</p> <p>TACACS/TACACS+</p> <p>Web UI</p>
General Protocols	<p>IEEE 802.1ad Q-in-Q</p> <p>IEEE 802.1ak Multiple Registration Protocol (MRP) and Multiple VLAN Registration Protocol (MVRP)</p> <p>IEEE 802.1AX-2008 Link Aggregation</p> <p>IEEE 802.1D MAC Bridges</p> <p>IEEE 802.1p Priority</p> <p>IEEE 802.1Q VLANs</p> <p>IEEE 802.1s Multiple Spanning Trees</p>

Technical Specifications

IEEE 802.1w Rapid Reconfiguration of Spanning Tree
IEEE 802.1X PAE
IEEE 802.3 Type 10BASE-T
IEEE 802.3ab 1000BASE-T
IEEE 802.3ac (VLAN Tagging Extension)
IEEE 802.3ad Link Aggregation Control Protocol (LACP)
IEEE 802.3ae 10-Gigabit Ethernet
IEEE 802.3af Power over Ethernet
IEEE 802.3at Power over Ethernet Plus
IEEE 802.3az Energy Efficient Ethernet
IEEE 802.3i 10BASE-T
IEEE 802.3u 100BASE-X
IEEE 802.3x Flow Control
IEEE 802.3z 1000BASE-X
RFC 768 UDP
RFC 783 TFTP Protocol (revision 2)
RFC 791 IP
RFC 792 ICMP
RFC 793 TCP
RFC 826 ARP
RFC 854 TELNET
RFC 855 Telnet Option Specification
RFC 894 IP over Ethernet
RFC 950 Internet Standard Subnetting Procedure
RFC 951 BOOTP
RFC 1027 Proxy ARP
RFC 1042 IP Datagrams
RFC 1071 Computing the Internet Checksum
RFC 1123 Requirements for Internet Hosts
RFC 1166 - IP Addresses
RFC 1213 Management Information Base for Network Management of TCP/IP-based internets
RFC 1256 ICMP Router Discovery Protocol (IRDP)
RFC 1305 NTPv3
RFC 1350 TFTP Protocol (revision 2)
RFC 1519 CIDR
RFC 1533 DHCP Options and BOOTP Vendor Extensions
RFC 1591 DNS (client only)
RFC 1643 - Definitions of Managed Objects for the Ethernet-like Interface Types
RFC 1812 IPv4 Routing
RFC 1866 Hypertext Markup Language - 2.0
RFC 1901 - Introduction to Community-based SNMPv2
RFC 1902-1907 - SNMPv2
RFC 2131 DHCP
RFC 2236 IGMP Snooping
RFC 2462 IPv6 Stateless Address Autoconfiguration
RFC 2474 Definition of the Differentiated Services Field (DS Field) in the IPv4 and IPv6 Headers
RFC 2475 Architecture for Differentiated Services
RFC 2597 Assured Forwarding PHB Group
RFC 2616 HTTP Compatibility v1.1
RFC 2665 Definitions of Managed Objects for the Ethernet-like Interface Types
RFC 2668 Definitions of Managed Objects for IEEE 802.3 Medium Attachment Units (MAUs)
RFC 2865 Remote Authentication Dial In User Service (RADIUS)
RFC 2866 RADIUS Accounting
RFC 3046 - DHCP Relay Agent Information Option
RFC 3246 Expedited Forwarding PHB

Technical Specifications

RFC 3414 User-based Security Model (USM) for version 3 of the Simple Network Management Protocol (SNMPv3)
RFC 3415 View-based Access Control Model (VACM) for the Simple Network Management Protocol (SNMP)
RFC 3416 Protocol Operations for SNMP
RFC 3418 Management Information Base (MIB) for the Simple Network Management Protocol (SNMP)
RFC 3576 Ext to RADIUS (CoA only)
RFC 3580 - IEEE 802.1X Remote Authentication Dial In User Service (RADIUS) Usage Guidelines
RFC 3587 IPv6 Global Unicast Address Format
RFC 3810 Multicast Listener Discovery Version 2 (MLDv2) for IPv6
RFC 4030 Authentication Suboption for DHCP Relay Agent
RFC 4213 Basic IPv6 Transition Mechanisms
RFC 4291 IP Version 6 Addressing Architecture
RFC 4541 Considerations for Internet Group Management Protocol (IGMP) and Multicast Listener Discovery (MLD) Snooping Switches
RFC 4575 A Session Initiation Protocol (SIP) Event Package for Conference State
RFC 4675 RADIUS VLAN & Priority
RFC 5095 Deprecation of Type 0 Routing Headers in IPv6
802.1r - GARP Proprietary Attribute Registration Protocol (GPRP)

IP Multicast

RFC 1112 IGMPv1
RFC 3376 IGMPv3

IPv6

RFC 1981 IPv6 Path MTU Discovery
RFC 2460 IPv6 Specification
RFC 2461 IPv6 Neighbor Discovery
RFC 2463 ICMPv6
RFC 2464 Transmission of IPv6 over Ethernet Networks
RFC 3162 RADIUS and IPv6
RFC 3306 Unicast-Prefix-based IPv6 Multicast Addresses
RFC 3315 DHCPv6 (client and relay)
RFC 3484 Default Address Selection for IPv6
RFC 3736 Stateless Dynamic Host Configuration Protocol (DHCP) Service for IPv6
RFC 4291 IP Version 6 Addressing Architecture
RFC 4293 MIB for IP
RFC 4443 ICMPv6
RFC 4861 IPv6 Neighbor Discovery
RFC 4862 IPv6 Stateless Address Auto-configuration
RFC 6724 Default Address Selection for Internet Protocol Version 6 (IPv6)

MIBs

RFC 1212 Concise MIB Definitions
RFC 1213 MIB II
RFC 1493 Bridge MIB
RFC 1757 Remote Network Monitoring MIB
RFC 2096 IP Forwarding Table MIB
RFC 2233 Interface MIB
RFC 2571 SNMP Framework MIB
RFC 2572 SNMP-MPD MIB
RFC 2573 SNMP-Notification MIB
RFC 2573 SNMP-Target MIB
RFC 2574 SNMP USM MIB
RFC 2618 RADIUS Authentication Client MIB
RFC 2620 RADIUS Accounting Client MIB

Technical Specifications

RFC 2665 Ethernet-Like-MIB
RFC 2668 802.3 MAU MIB
RFC 2674 802.1p and IEEE 802.1Q Bridge MIB
RFC 2737 Entity MIB (Version 2)
RFC 2819 RMON MIB
RFC 2863 The Interfaces Group MIB
RFC 2925 Ping MIB
RFC 3414 SNMP-User based-SM MIB
RFC 3415 SNMP-View based-ACM MIB
RFC 3418 MIB for SNMPv3
RFC 3621 Power Ethernet MIB

Network Management IEEE 802.1AB Link Layer Discovery Protocol (LLDP)
RFC 2579 Textual Conventions for SMIv2
RFC 2580 Conformance Statements for SMIv2
RFC 2819 Four groups of RMON: 1 (statistics), 2 (history), 3 (alarm) and 9 (events)
ANSI/TIA-1057 LLDP Media Endpoint Discovery (LLDP-MED)
SNMPv1/v2c/v3

QoS/CoS RFC 2474 DS Field in the IPv4 and IPv6 Headers
RFC 3260 New Terminology and Clarifications for DiffServ

Security IEEE 802.1X Port Based Network Access Control
RFC 1492 TACACS+
RFC 2138 RADIUS Authentication
RFC 2139 RADIUS Accounting
RFC 2865 RADIUS (client only)
RFC 2866 RADIUS Accounting
RFC 3260 New Terminology and Clarifications for DiffServ
Secure Sockets Layer (SSL)
SSHv2 Secure Shell

Accessories

HPE FlexNetwork 5130 EI Switch Series accessories

Transceivers

HPE X115 100M SFP LC FX Transceiver	JD102B
HPE X110 100M SFP LC LX Transceiver	JD120B
HPE X115 100M SFP LC BX 10-U Transceiver	JD100A
HPE X115 100M SFP LC BX 10-D Transceiver	JD101A
HPE X125 1G SFP LC LH40 1310nm Transceiver	JD061A
HPE X120 1G SFP LC LH40 1550nm Transceiver	JD062A
HPE X125 1G SFP LC LH70 Transceiver	JD063B
HPE X120 1G SFP LC LH100 Transceiver	JD103A
HPE X120 1G SFP LC SX Transceiver	JD118B
HPE X120 1G SFP LC LX Transceiver	JD119B
HPE X120 1G SFP LC BX 10-U Transceiver	JD098B
HPE X120 1G SFP LC BX 10-D Transceiver	JD099B
HPE X120 1G SFP RJ45 T Transceiver	JD089B
HPE X130 10G SFP+ LC SR Transceiver	JD092B
HPE X130 10G SFP+ LC LR Transceiver	JD094B
HPE X240 10G SFP+ to SFP+ 0.65m Direct Attach Copper Campus-Cable	JH693A
HPE X240 10G SFP+ to SFP+ 1.2m Direct Attach Copper Campus-Cable	JH694A
HPE X240 10G SFP+ to SFP+ 3m Direct Attach Copper Campus-Cable	JH695A
HPE FlexNetwork X240 10G SFP+ to SFP+ 5m Direct Attach Copper Cable	JG081C

Cables

HPE LC to LC Multi-mode OM3 2-Fiber 0.5m 1-Pack Fiber Optic Cable (Recommended)	AJ833A
HPE LC to LC Multi-mode OM3 2-Fiber 1.0m 1-Pack Fiber Optic Cable (Recommended)	AJ834A
HPE LC to LC Multi-mode OM3 2-Fiber 5.0m 1-Pack Fiber Optic Cable (Recommended)	AJ836A
HPE LC to LC Multi-mode OM3 2-Fiber 15.0m 1-Pack Fiber Optic Cable (Recommended)	AJ837A
HPE LC to LC Multi-mode OM3 2-Fiber 30.0m 1-Pack Fiber Optic Cable (Recommended)	AJ838A
HPE LC to LC Multi-mode OM3 2-Fiber 50.0m 1-Pack Fiber Optic Cable (Recommended)	AJ839A
HPE Premier Flex LC/LC Multi-mode OM4 2 fiber 1m Cable (Recommended)	QK732A
HPE Premier Flex LC/LC Multi-mode OM4 2 fiber 2m Cable (Recommended)	QK733A
HPE Premier Flex LC/LC Multi-mode OM4 2 fiber 5m Cable (Recommended)	QK734A
HPE Premier Flex LC/LC Multi-mode OM4 2 fiber 15m Cable (Recommended)	QK735A
HPE Premier Flex LC/LC Multi-mode OM4 2 fiber 30m Cable (Recommended)	QK736A
HPE Premier Flex LC/LC Multi-mode OM4 2 fiber 50m Cable (Recommended)	QK737A
HPE LC to LC Multi-mode OM3 2-Fiber 2.0m 1-Pack Fiber Optic Cable (Recommended)	AJ835A

HPE FlexNetwork 5130 24G SFP 4SFP+ EI Switch (JG933A)

HPE X361 150W 100-240VAC to 12VDC Power Supply ²	JD362B
HPE X361 150W 48-60VDC to 12VDC Power Supply ²	JD366B
HPE RPS800 Redundant Power Supply ^{2,3}	JD183A
HPE X290 500 V 1m RPS Cable ³	JD186A

HPE FlexNetwork 5130 48G 4SFP+ EI Switch (JG934A)

HPE RPS 800 Redundant Power Supply ²	JD183A
HPE RPS1600 Redundant Power System ²	JG136A

Accessories

HPE RPS1600 1600W AC Power Supply ²	JG137A
HPE X290 500 V 1m RPS Cable	JD186A
HPE X290 1000 A JD5 NonPoE 2m RPS Cable	JD188A
HPE FlexNetwork 5130 24G PoE+ 4SFP+ (370W) EI Switch (JG936A)	
HPE RPS1600 Redundant Power System ²	JG136A
HPE RPS1600 1600W AC Power Supply ²	JG137A
HPE X290 1000 A JD5 2m RPS Cable	JD187A
HPE FlexNetwork 5130 48G PoE+ 4SFP+ (370W) EI Switch (JG937A)	
HPE RPS1600 Redundant Power System ²	JG136A
HPE RPS1600 1600W AC Power Supply ²	JG137A
HPE X290 1000 A JD5 2m RPS Cable	JD187A
HPE FlexNetwork 5130 48G 2SFP+ 2XGT EI Switch (JG939A)	
HPE RPS 800 Redundant Power Supply ²	JD183A
HPE RPS1600 Redundant Power System ²	JG136A
HPE RPS1600 1600W AC Power Supply ²	JG137A
HPE X290 500 V 1m RPS Cable	JD186A
HPE X290 1000 A JD5 NonPoE 2m RPS Cable	JD188A
HPE FlexNetwork 5130 24G POE+ 2SFP+ 2XGT (370W) EI Switch (JG940A)	
HPE RPS1600 Redundant Power System ²	JG136A
HPE RPS1600 1600W AC Power Supply ²	JG137A
HPE X290 1000 A JD5 2m RPS Cable	JD187A
HPE FlexNetwork 5130 48G POE+ 2SFP+ 2XGT (370W) EI Switch (JG941A)	
HPE RPS1600 Redundant Power System ²	JG136A
HPE RPS1600 1600W AC Power Supply ²	JG137A
HPE X290 1000 A JD5 2m RPS Cable	JD187A

¹ Supported only on the HPE FlexNetwork 5130 24G SFP 4SFP+ EI Switch (JG933A), and only when used in the 1G downlink configuration

² Products covered by 1 year warranty. See details at www.hpe.com/networking/warrantyquickref

³ Supported on JG933A only when connected to HPE 5500 150WDC Power Supply (JD366A) or HPE X361 150W 48-60VDC to 12VDC Power Supply (JD366B) with HPE X290 500 V 1m RPS Cable (JD186A)

Summary of Changes

Date	Version History	Action	Description of Change:
06-Aug-2018	Version 18	Changed	Configuration section updated: Added AOC compatibility and appropriate SFP+ Rules
07-May-2018	Version 17	Changed	Configuration section updated
09-Jan-2017	Version 16	Added	SKUs added: JH693A, JH694A, JH695A
		Changed	Technical Specifications updated
07-Oct-2016	Version 15	Changed	Configuration section and Accessories updated
03-Oct-2016	Version 14	Added	SKUs added: JD362B, JD366B
20-May-2016	Version 13	Changed	Document name changed to HPE FlexNetwork 5130 EI Switch Series, SKU descriptions updated. Overview and Technical Specifications updated.
05-Feb-2016	Version 12	Changed	Standards and Protocols updated
08-Jan-2016	Version 11	Changed	Technical Specifications and Accessories updated
01-Dec-2015	Version 10	Changed	Overview and Technical Specifications updated
16-Oct-2015	Version 9	Changed	Minor changes made on Technical Specifications
17-Aug-2015	Version 8	Added	New models added: JG938A, JG939A, JG940A, JG941A
		Changed	Updated Features and Benefits, Configuration and Technical Specifications
11-Jul-2015	Version 7	Changed	Minor changes on Overview and Standard Protocols
10-Jul-2015	Version 6	Changed	Error fixed on Features and benefits
24-Feb-2015	Version 5	Changed	Memory and processor data updated on Technical Specification section
15-Jan-2015	Version 4	Changed	Minor changes made on Technical Specifications
12-Jan-2015	Version 3	Changed	Errors fixed on Features and benefits section
01-Dec-2014	Version 2	Changed	Warranty and support updated
29-Sep-2014	Version 1	Created	Document creation



Sign up for updates

© Copyright 2018 Hewlett Packard Enterprise Development LP. The information contained herein is subject to change without notice. The only warranties for Hewlett Packard Enterprise products and services are set forth in the express warranty statements accompanying such products and services. Nothing herein should be construed as constituting an additional warranty. Hewlett Packard Enterprise shall not be liable for technical or editorial errors or omissions contained herein.

Products within this series are IPv6 Ready certified. See the Specifications section of this series for more information.

To learn more, visit: <http://www.hpe.com/networking>

c04394228 - 15058 - Worldwide - V18 - 6-August-2018

