



Brother's Linerless Label Printers

Desktop Linerless Printing Solutions



The Desktop linerless label printers are the latest addition to Brother's direct thermal desktop label printers that equip businesses with a better way to manage their labelling processes. Our linerless printer range offers practical, efficient, and sustainable labelling, all in one compact machine. As experts in making printers for over 50 years, we're committed to providing our customers with reliable printers that will truly make a difference to their business.



Desktop linerless label printers



What are linerless labels?

Linerless labels, as the name suggests, are labels without a backing paper or liner. Unlike traditional labels that rely on a liner to support and protect the adhesive, linerless labels utilise a specialised adhesive and a silicone release coating on the label's surface, essentially acting as their own liner within the roll. So all you need to do is print and apply.

With no liner, labels are printed from a continuous roll and the in-built cutter means you can make them to the desired length that you need.

Benefits of linerless printing



Reduced waste

As there is no backing paper, linerless labels only produce the label required meaning there is significantly less waste.



Custom length printing

A key benefit for linerless labels is that you can print at any desired length. The continuous rolls and automatic cutter allow users to print various lengths label all from the same media, without having to change rolls.



Efficiency benefits

Linerless labels not only save time during application, but they also can hold up to 40% more labels per roll, meaning you can print for longer periods without having to reload media as often.



Sustainability

Without the non-recyclable backing paper, linerless labels are widely recyclable. This can improve a business' carbon footprint by decreasing the amount of non-recyclable waste they produce.



Health and safety benefits

Linerless labels eliminate the chances of trips or slips on backing paper.



Our commitment to sustainable printing.

Thinking of sustainability as a destination minimises the impact of the small, incremental changes required to get there. It's the small incremental changes that can make a huge difference within a business. So, switching to a more sustainable method of label printing might not seem like a big win, but they all contribute to the sustainable journey.

At Brother we're committed to being a leader in sustainability, our linerless products is just one of many projects we are working on at Brother.

TO FIND OUT MORE VISIT OUR SUSTAINABILITY AT BROTHER WEBPAGES



We're committed to product innovation:

Innovation is key to providing sustainable labelling solutions that produce less waste and enable better process management, such as linerless labels, integrated labelling solutions, and quality thermal printers.



We're committed to the circular economy:

A circular economy moves away from the take-make-waste model and looks at how waste can be reduced through reduced use of resources, extended lifetime, reuse, remanufacturing, and recycling.



We're committed to actively reducing our CO2 emissions:

At Brother, we're working to actively reduce our CO2 emissions for the entire value chain by going carbon free, encouraging resource recycling, and contributing to conservation efforts.





Industry applications



Retail

Helping business stay flexible with their pricing, we provide labelling solutions for price markdowns that can aid businesses in keeping competitive in their price markdown strategy. With battery accessories* and optional Bluetooth connectivity, this range of desktop label printers can be mobile across the shop floor.

*selected models

Food service

Food e-commerce is booming, with more people ordering food online than ever before. For businesses to stay competitive, they need to have a labelling solution that ensures compliance with allergy labels but also helps them manage online orders for collection. Linerless labels are perfect for combining practicality with efficiency.

Food production

Within the retail food industry, saving time while preparing orders can make all the difference. Linerless labels have been proven to meet the needs of customers looking to streamline their production while staying compliant to food regulation standards.



Desktop linerless

brief summary

TD-2320DFC203	TD-2350DFC203	TD-4420DNFC	TD-4550DNWBFC
2 Inch		4 Inch	

Printing

Print technology	Direct thermal			
Print resolution	203dpi	203dpi	203dpi	300dpi
Print speed	152.4mm/sec (6ips)		203mm/Sec (8ips)	152mm/sec (6ips)
Max print width	59mm		104mm	108mm
Min print length	6.4mm			
Max print length	3000mm			
Media sensor type	Gap (Transmissive), Black mark (reflective)			
Media sensor locaiton	Gap (fixed), Reflective (adjustable)			
Release mode	Standard: Cut			

Connectivity

USB	USB Ver.2.0 (Full Speed) (Type C)		USB Ver.2.0 (full speed) (Type B)	
USB Host port	Yes	Yes	-	Yes
Serial	Yes	Yes	Yes	Yes
Bluetooth	-	Yes	-	Yes
Wireless LAN	-	Yes	-	Yes
Wired LAN	Yes	Yes	Yes	Yes

General

Dimintions (mm)	119w x 256d x 158h		180w x 255d x 155h	
Weight	1.79kg	1.82kg	2.49kg	
Control pannel	3 button, 3 LED	7 button, 3 LED	3 button, 3 LED	7 button, 3 LED
Operating system support	Microsoft Windows 10, 11 Microsoft Windows Server 2016/2019/2022, Linux		Microsoft Windows10,11 Microsoft Windows Server 2016/2019/2022, Linux	
Operating system support	Raster ESC/P P-touch Template ZPL 2 emulation CPCL emulation EPL 2 emulation DPL emulation		Raster ESC/P P-touch Template ZPL 2 emulation CPCL emulation EPL 2 emulation DPL emulation	



We recommend using the following Brother consumables which guarantee to give the best quality printing and will reduce time and money spent on maintenance, reprinting and fixing print jams.

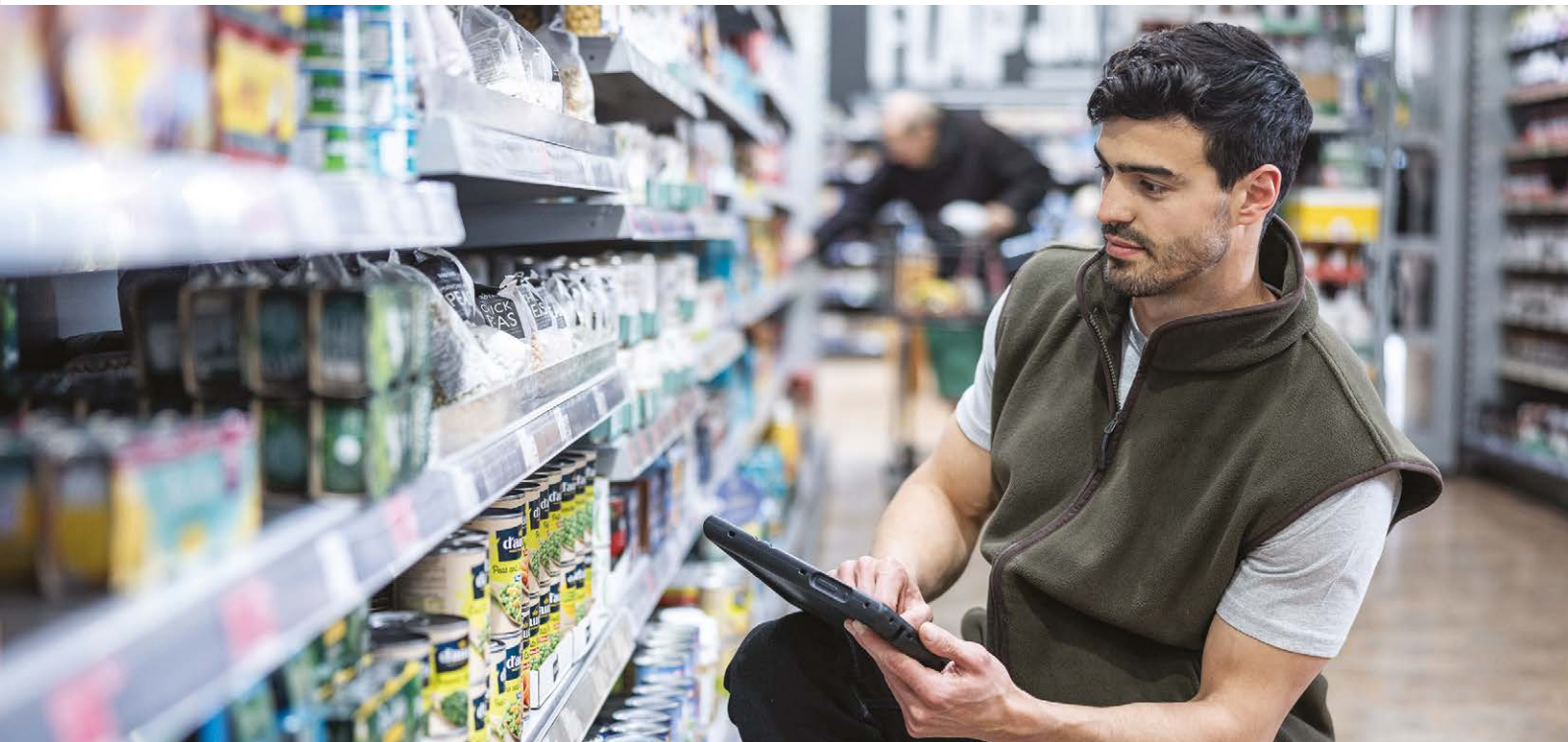
Linerless TD-2D	Description	Size	Rolls/box	Adhesive strength
BFA-274039-102	Continuous linerless roll	39mm x 82.3m	12	Removable (Full)
BFA-274058-080	Continuous linerless roll	58mm x 51.8m	32	Removable (Full)
BDA-274058-080	Continuous linerless roll	58mm x 51.8m	32	Removable (Diamond)
BDA-255058-102	Continuous linerless roll	58mm x 114.3m	12	Removable (Diamond)

Linerless TD-4D	Description	Size	Rolls/box	Adhesive strength
BFA-274039-102	Continuous linerless roll	39mm x 82.3m	12	Removable (Full)
BFA-274058-080	Continuous linerless roll	58mm x 51.8m	32	Removable (Full)
BFA-274080-080	Continuous linerless roll	80mm x 51.8m	32	Removable (Full)
BFA-274106-080	Continuous linerless roll	106mm x 51.8m	9	Removable (Full)

At your side

At Brother, our mission is to keep your business operations running as smoothly and efficiently as possible. We want to work with your business to understand the issues you are facing and provide the perfect products and solutions to resolve them. Our dedicated support teams are always happy to help with any questions you may have or if you need a custom labelling solution to suit your business.

Our brand ethos of “At your side” support is continued throughout the life of your label printers. Each linerless printer comes with a 3-year warranty as standard, giving you added peace of mind so you can focus on your business.



brother

at your side

Contact:

brother.dk
brother.ee
brother.fi
brother.is
brother.lt
brother.lv
brother.no
brother.se

All specifications correct at the time of printing and are subject to change. Brother is a registered trademark of Brother Industries Ltd.
Brand product names are registered trademarks or trademarks of their respective companies.