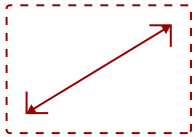




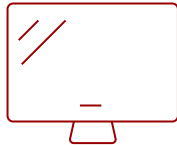
CDE6531 - 65" SMART COMMERCIAL DISPLAY, 3840X2160 RESOLUTION, 500 CD/M2 BRIGHTNESS, 24/7 OPERATION, HDMI IN/OUT, USB-C

Key Features

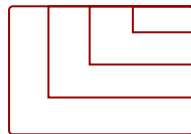
- **FAST BOOT-UP:** Start meetings quickly with a near-instant 8-second warm boot
- **STUNNING 4K UHD:** Enjoy crisp, vibrant visuals with 500-nit brightness and anti-glare clarity
- **RELIABLE 24/7 PERFORMANCE:** Built for continuous operation you can count on
- **FUTURE-PROOF AND SECURE:** Android 14 (upgradeable to 16) keeps your display protected and up to date
- **SEAMLESS AV INTEGRATION:** Works effortlessly with Crestron, Extron, AMX, and Q-SYS systems



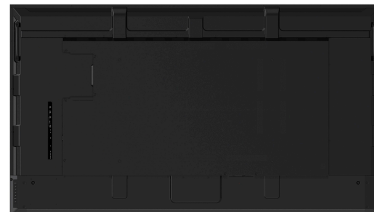
65
DISPLAY



VA
PANEL



RESOLUTION



Product Description

Meetings are often slow, clunky, and frustrating, but they don't have to be. The ViewSonic CDE6531 commercial display is built to get your team connected and collaborating in seconds. With fast boot-up, easy setup, and a native Android AOSP platform, this 65" display will have you ready to share ideas and make decisions without the usual tech delays. A simple USB-C connection handles everything, including 4K video, data, and power, so you can finally say goodbye to tangled cables and messy installations. Plus, the anti-glare glass and optimized screen haze keep your visuals sharp and clear, no matter the lighting. The best part? These displays are designed for reliability and certified to work with top AV control systems, making them the perfect fit for any corporate meeting room or collaboration space. Step into your next meeting with confidence, clarity, and a display that works as hard as your team does.

Specifications

	More Information
UPC	766907034721
OS	Android 14 AOSP
Media Player Type	Media Player
GPU	ARM Mali-G57 MC1
CPU	MT9681 (ARM Cortex-A73 x4)
Memory	8GB DDR4
Storage	32GB
Photo	BMP, GIF, JPEG, PNG
Video	AVI, FLV, F4V, MKV, MOV, MP4, MPG, WEBM
Music	AAC, APE, FLAC, PCM, MP3, OGG, WAV
HDMI! 2.1	480i, 480p, 720p, 1080i, 1080p, 4K@60Hz
HDMI Out	4K@60Hz
USB-C	480p, 576p, 720p, 1080p, 4K@60Hz
Internal Speakers	16W (x2)
HDMI 2.1 In	3
HDMI 2.0 Out	1
3.5mm Audio In	1
3.5mm Audio Out	1
SPDIF Audio Out	1
USB 3.0	1
USB 2.0	1
USB Type C	1 (Supports DisplayPort 1.2, Power 65W, USB 2.0)
RS232	1
RJ45 Input (Internet)	1
RJ-45 LAN Port Output	1
WIFI Module Slot	1
Voltage	100-240 VAC +/- 10% Wide Range, 50-60Hz +/-3 Hz
Consumption (max)	99.42W
Consumption (typical)	74.23W
Stand-by	<0.5W
Temperature	32-104° F (0 - 40° C)
Humidity (non-condensing)	20-80%
Net (lbs)	52.58

Gross (lbs)	70.9
Net (kg)	23.85
Gross (kg)	32.16
Packaging (in.)	64.09 x 37.09 x 7.28
Physical (in.)	57.61 x 33 x 3.21
Packaging (mm)	1628 x 942 x 185
Physical (mm)	1463.3 x 838.3 x 81.6
VESA Compatible	600 x 400 mm
Screw Size	M8
Screw Length (mm)	25
AV Control	AMX Certified, Extron Certified, Crestron Connected
Warranty	Three-year limited warranty on parts, labor and backlight
Recycle/Disposal	Please dispose of in accordance with local, state or federal laws.
Package Contents	CDE6531 Commercial Display, Remote control with batteries, Quick Start Guide, Power cable (3m), HDMI Cable (3m), Wall Mount Screws (x4) and RS232 adapter
Regulations	cTUVus, FCC, Energy Star 8.0, RoHS, Mexico NOM, Mexico Energy
Wifi	Wi-Fi 6 (802.11ax (a/b/g/n/ac/ax))
Bluetooth	Bluetooth 5.0
Screen Size	65
Viewable Area (in.)	64.5
Orientation	Landscape / Portrait
Colors	1.07B
Color Space Support	8 bit + FRC
Light Source	DLED
Display Resolution	3840 x 2160
Refresh Rate	60Hz
Panel Type	VA
Aspect Ratio	16:9
Static Contrast Ratio	1,200:1
Dynamic Contrast Ratio	5,000:1
Backlight Life (Hours)	50,000
Brightness	500 cd/m2
Response Time (Typical GTG)	6.5ms
Bezel Width (in.)	0.63
Bezel Width (mm)	15.9
Viewing Angles	178° horizontal, 178° vertical

Panel Surface

Anti-Glare type, Hard-coating (3H), Haze 25%


Operation Rating

24/7

UPC: 766907034721



Contact Sales
ViewSonic.com

888.881.8781 

email:

salesinfo@viewsonic.com

