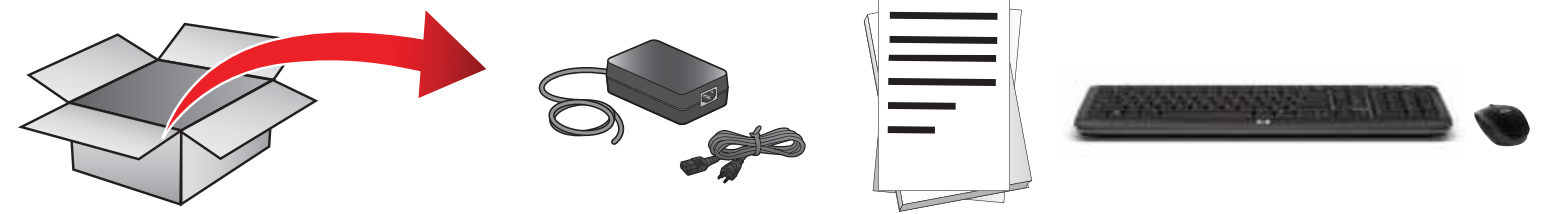




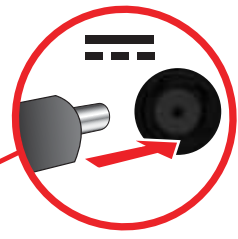
# TOUCHSMART<sup>6</sup>



662953-NN1

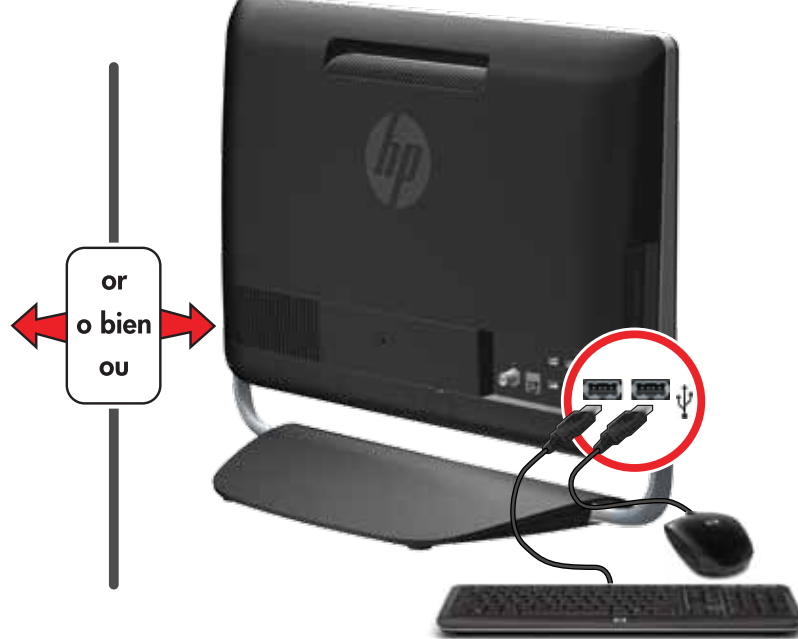


# 1

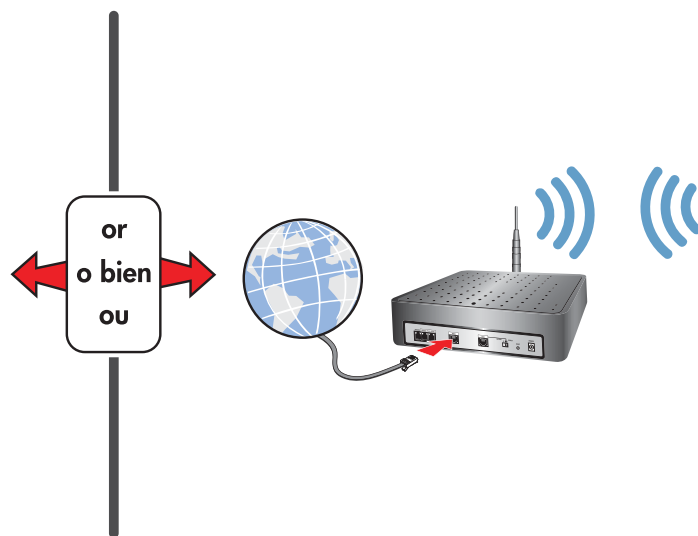


- EN** Grounded connection or connection to surge protector is recommended.
- ES** Se recomienda una conexión a tierra o una conexión a un protector contra sobretensiones.
- BR** Recomenda-se conexão aterrada ou conexão com proteção contra sobretensão.

# 2



# 3



- EN** Router and Internet access are required and sold separately.
- ES** Es necesario contar con enrutadores y acceso a Internet, que se adquieren por separado.
- BR** Roteadores e Internet necessários e vendidos separadamente.

# 4



- EN** Removing the Batteries
- BR** Remoção das baterias.



[www.hp.com/support](http://www.hp.com/support)