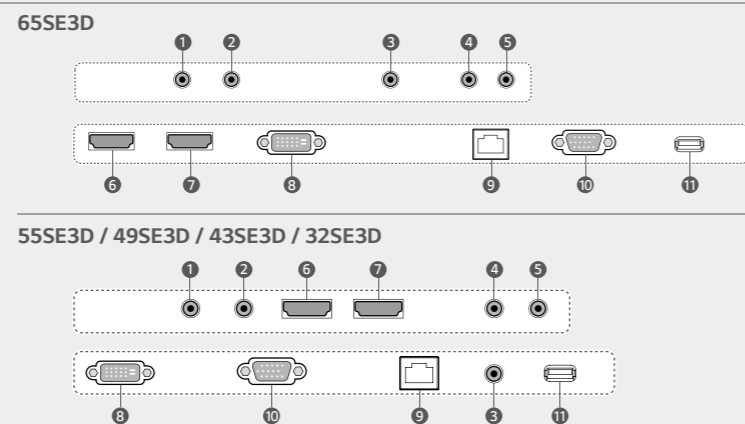


Specifications

SE3D Series	65SE3D	55SE3D	49SE3D	43SE3D	32SE3D
Screen Size	65"	55"	49"	43"	32"
Panel Technology	IPS				
Aspect Ratio	16:9				
Native Resolution	1,920 x 1,080 (FHD)				
Brightness	400 cd/m ²	350 cd/m ²	350 cd/m ²	350 cd/m ²	350 cd/m ²
Contrast Ratio	1,300:1	1,100:1	1,100:1	1,100:1	1,100:1
Dynamic CR	500,000:1				
Viewing Angle (H x V)	178 x 178				
Response Time	10 ms (G to G BW), 7.6 ms (WOT)	12 ms (G to G BW), 9.0 ms (WOT)	12 ms (G to G BW), 10.1 ms (WOT)	12 ms (G to G BW), 9.4 ms (WOT)	10 ms (G to G BW), 7.1 ms (WOT)
Surface Treatment	Hard Coating (3H), Anti-Glare Treatment of The Front Polarizer (Haze 1% (Typ.))				
Guaranteed Operating Hour	18 Hours				
Orientation	Portrait & Landscape				
Input	HDMI (2), DVI-D, RGB, Audio in, USB 2.0				
Output	Audio out, External Speaker out				
External Control	RS232C (In/Out), RJ45, IR Receiver				
Bezel Color	Black				
Bezel Width	11.9 mm (T/R/L), 18 mm (B)	11.9 mm (T/R/L), 18 mm (B)	11.9 mm (T/R/L), 18 mm (B)	11.9 mm (T/R/L), 18 mm (B)	13 mm (T/R/L), 18 mm (B)
Monitor Dimensions (W x H x D)	1,456.9 x 838 x 41.1 mm	1,238 x 714.9 x 38.6 mm	1,102.2 x 638.5 x 38.6 mm	969.6 x 563.9 x 38.6 mm	729.4 x 428.9 x 55.5 mm
Weight (Head)	27.7 kg	17.3 kg	14.1 kg	9.8 kg	5.2 kg
Weight (Head + Stand)	32.9 kg	20.6 kg	17.4 kg	12.3 kg	6 kg
Monitor with Optional Stand & Speaker Dimensions (W x H x D)	1,456.9 x 898.1 x 293.7 mm	1,238 x 773.4 x 219.6 mm	1,102.2 x 696.8 x 219.6 mm	969.6 x 622.2 x 193 mm	729.4 x 481 x 154.2 mm
Weight (Head + Stand + Speaker)	33.4 kg	21.1 kg	17.9 kg	12.8 kg	6.5 kg
Carton Dimensions (W x H x D)	1,561 x 977 x 190 mm	1,330 x 807 x 170 mm	1,197 x 760 x 166 mm	1,052 x 650 x 123 mm	810 x 510 x 132 mm
Packed Weight	33.6 kg	21.5 kg	17.2 kg	12.4 kg	6.5 kg
VESA™ Standard Mount Interface	300 x 300 mm		200 x 200 mm		
SPECIAL FEATURES	USB Content Scheduling, SNMP Support, Wi-Fi Ready (Dongle), PM Mode, No Signal Image Setting, ISM Mode, Holiday Schedule, Local Time Auto Setting, Fail Over (USB, RGB, DVI, HDMI), Wake on LAN				
ENVIRONMENTAL CONDITIONS	Operating Temperature range	0°C to 40°C	0°C to 40°C	0°C to 40°C	0°C to 40°C
	Operating Humidity range	10% to 80%	10% to 80%	10% to 80%	10% to 80%
POWER	Power Supply	100-240V~, 50/60Hz			
	Power Type	Built-In Power			
POWER CONSUMPTION	Typ.	95 W	70 W	65 W	60 W
	Smart Energy Saving	70 W	55 W	50 W	45 W
STANDARD (CERTIFICATION)	Safety	UL / cUL / CB / TUV / KC			
	EMC	FCC Class "A" / CE / KCC			
	ErP / Energy Star	NA / Yes (Energy Star 7.0)	NA / Yes (Energy Star 7.0)	NA / Yes (Energy Star 7.0)	NA / Yes (Energy Star 7.0)
MEDIA PLAYER COMPATIBILITY	OPS Type Compatible	No	No	No	No
	External Media Player Attachable	Yes (MP500 / MP700)	Yes (MP500 / MP700)	Yes (MP500 / MP700)	No
SOFTWARE COMPATIBILITY	Content Management Software	SuperSign W			
	Control and Monitoring Software	SuperSign C			
ACCESSORIES	Basic	Remote Controller (include battery 2ea), Power Cord, QSG, RGB Cable, Regulation Book, Phone to RS232C Gender, IR Receiver			
	Optional	Speaker (SP-5000), Stand (ST-652T), Media Player, Wall Bracket (LSW350B), VESA Adapter (AM-B330S)	Speaker (SP-5000), Stand (ST-492T), Media Player, Wall Bracket (LSW350B), VESA Adapter (AM-B330S)	Speaker (SP-5000), Stand (ST-492T), Media Player, Wall Bracket (LSW350B), VESA Adapter (AM-B330S)	Speaker (SP-5000), Stand (ST-432T), Media Player, Wall Bracket (LSW230B), VESA Adapter (AM-B220S)

Connectivity

- 1 RS232C IN
- 2 RS232C OUT
- 3 AUDIO IN
- 4 AUDIO OUT
- 5 EXT IR IN
- 6 HDMI 1
- 7 HDMI 2
- 8 DVI-D IN
- 9 LAN
- 10 RGB IN
- 11 USB



Download LG Commercial Display Mobile App



Learn more www.lg.com/b2b

YouTube youtube.com/c/LGCommercialDisplay

LG may make changes to specifications and product descriptions without notice.
Copyright © 2017 LG Electronics Inc. All rights reserved. "LG Life's Good" is a registered trademark of LG Corp.
The names of products and brands mentioned here may be the trademarks of their respective owners.



Simple Way to Manage Your Digital Signage Standard Essential SE3D Series



Simplify promotion content or sales information management with the LG SE3D Series that satisfies a wide range of display purposes in your business. This series has a practical design with a slimmer bezel and depth for optimum space utilization. Multiple screen sizes ensure the best selection for your business environment.

Key Features

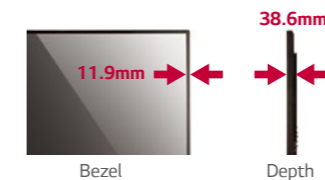
Sleek Design



Slim

Slim Bezel & Depth

The thin bezel & depth allows a perfect fit for a sleek look.



*Depth: except 65", 32"
*Bezel: except 32"

Detachable Logo

Portrait mode allows the logo to be positioned in the desired setting.



Cable Management

The well-organized cable terminals in the back optimize available space.



USB Content Management



USB Content Scheduling

Play and schedule contents with a USB connection-no server connection required.



*Supported Content Type: Video (MPEG1/2/4, H.264),
Audio (MP3, AC3, MPEG, AAC, HEAAC, LPCM), Image (JPEG, PNG, BMP)

Dust & Humidity Protection



Conformal Coating

Circuit board reliability is enhanced with conformal coating that protects against dust, iron powder, humidity and other harsh conditions.



Simple Way to Manage Your Digital Signage

Standard Essential SE3D Series



Screen Sizes
65", 55", 49", 43", 32"

SE3D Series

- Edge-lit LED
- Brightness: 350 cd/m² (65": 400 cd/m²)
- Bezel: T/L/R 11.9 mm (32": 13.0 mm), B 18.0 mm
- Depth: 38.6 mm (65": 41.1 mm, 32": 55.5 mm)
- HDMI (2) / DVI-D / RGB / RJ 45, RS232C in/out, USB 2.0

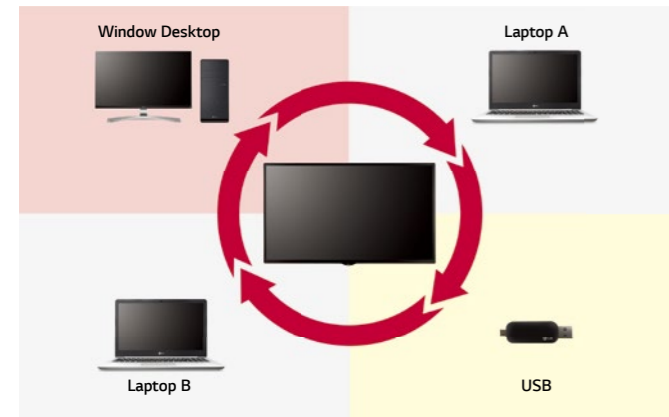


Other Features

Convenient Management

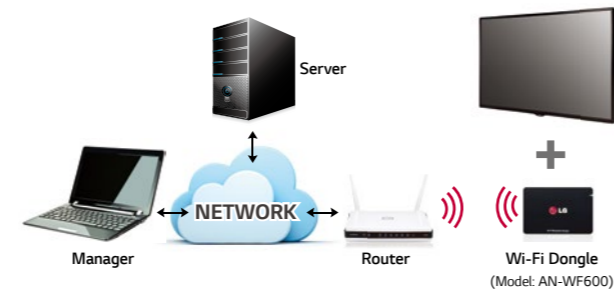
Enhanced Connectivity

Through its diverse interface, the signage lets you connect more than one device for optimal use.



Wi-Fi Support

SE3D Series supports Wi-Fi USB dongle connection for convenient content distribution. And SNMP support ensures convenient network management.



* SNMP: Simple Network Management Protocol

Convenient Screen Mode

Aspect Ratio Sustainability*

Sustain the same resolution and picture quality while powering on/off by receiving EDID¹⁾ through switch IC.



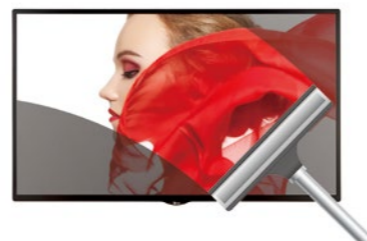
Stand-by Screen*

Even without signal from the media player, the network does not turn off completely, so remote control is possible, which prevents unnecessary power usage and enables efficient management.



Scheduled Screen Wash**

Prevent residual images with the screen transition feature.



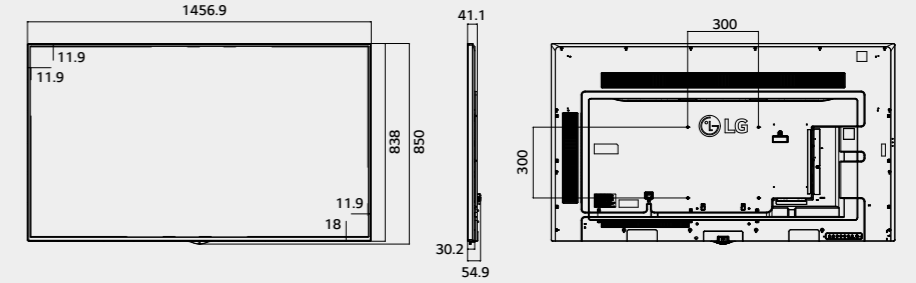
** Installation Menu > ISM Method

1) Extended Display Identification Data.
* Installation Menu > LG Digital Signage > PM Mode

Dimension (unit : mm)

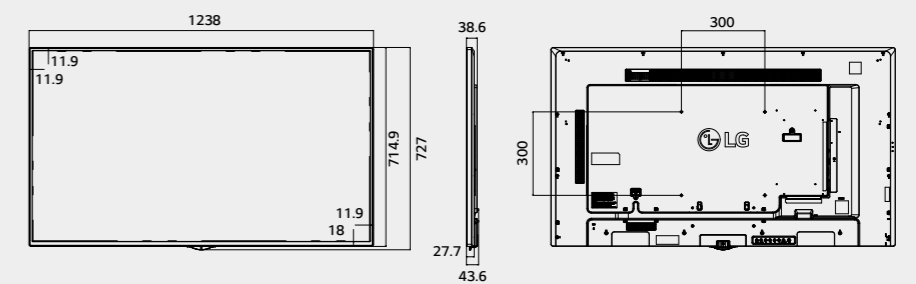
65"

1,456.9 x 838 x 41.1 /
27.7 kg



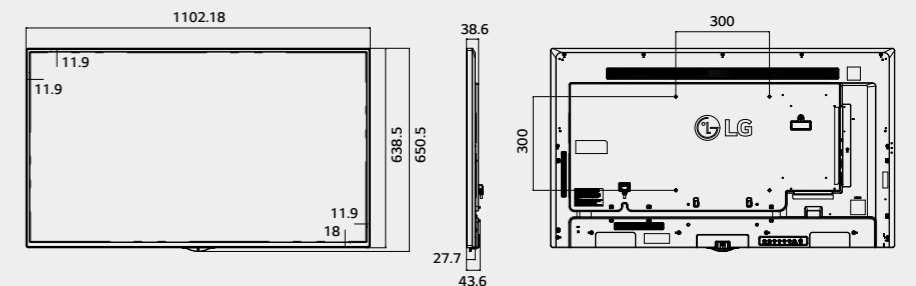
55"

1,238 x 714.9 x 38.6 /
17.3 kg



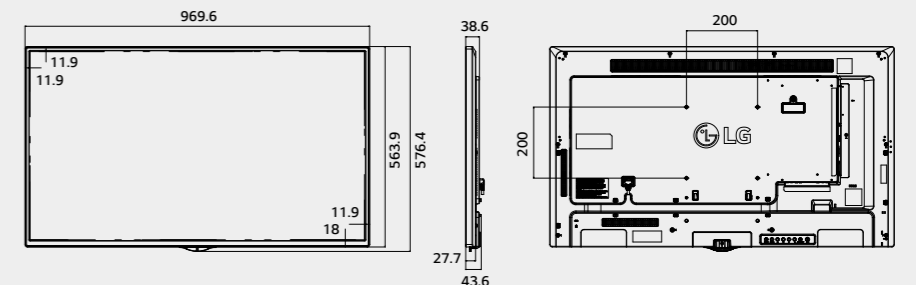
49"

1,102.2 x 638.5 x 38.6 /
14.1 kg



43"

969.6 x 563.9 x 38.6 /
9.8 kg



32"

729.4 x 428.9 x 55.5 /
5.2 kg

