

**EPSON**  
EXCEED YOUR VISION



# Epson Stylus™ Pro 4880/7880/9880

**Be Inspired with More Colours  
and Higher Image Quality**



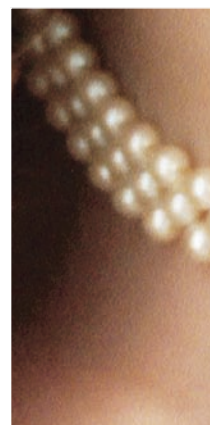
# Superior Image Quality

## 2880 x 1440dpi

The Epson Stylus™ Pro 880 series offers industry-leading output quality, with print resolutions of up to 2880 x 1440dpi. This is achieved as the result of technologies including Variable Sized Droplet Technology, which supports ink droplets as small as 3.5pl, and Advanced Meniscus Control, which enables the printer to deliver sharp, accurately placed spherical ink droplets with high levels of precision.

## New Image Processing Technology

Epson large format printers have long been regarded as leaders in delivering exceptional quality prints. With the introduction of the Epson Stylus Pro 880 series, this leadership has been given even greater emphasis. Featuring new algorithms for improved dot placement, the Epson Stylus Pro 880 series delivers higher image quality than previous models, in both high and low print resolution modes.



Without Image Processing Technology



With New Image Processing Technology

## Micro Piezo™ Print Head

Underpinning the Epson Stylus Pro 880 series industry-leading quality is the incredible control over ink droplet size, shape and placement. This is achieved by means of the printer's Micro Piezo™ print head, which uses a unique method of controlling the ink meniscus (surface) in each of the eight colour channels. The result is perfectly rounded ink droplets of various sizes – larger sizes for solid colour areas and smaller droplets for gradation, toning and detail – delivered with absolute precision.





# High Productivity

## High Capacity 110 / 220ml Ink Cartridges

With high-capacity pressurised 110 and 220ml ink cartridges, the Epson Stylus™ Pro 880 series is suitable for high volume print environments. The pressurised cartridges reduce ink wastage and provide a consistent flow of ink to each of the print head's eight channels.



## Permanent Print Head

A major advantage of the Epson Stylus Pro 880 series is its permanent print head which, aside from improving the overall performance of the printer, minimises the amount of time and effort required for maintenance. By avoiding the unnecessary cost of frequently replacing print heads, the Epson permanent print head assists in reducing the printer's overall cost of ownership.

## True BorderFree™ Printing

The Epson Stylus Pro 880 series printers deliver true borderfree printing. This innovative feature supports various media widths and saves on valuable post-production time by printing without margins. Finish print jobs more accurately and safely than manual finishing techniques by letting the printer do it for you.

## Powerful Connectivity

Regardless of your network environment, the Epson Stylus Pro 880 series can be easily and quickly connected with built-in High Speed USB 2.0 (compatible with USB 1.1) or 10/100 Base-T Ethernet. Along with this is full driver and software support for the latest Windows® and Mac OS X® operating systems.

By ensuring the Epson Stylus Pro 880 series has broad connectivity and operating system support, Epson has created an advanced series of large format printers that operate brilliantly in virtually any standalone or network environment. As a result, the Epson Stylus Pro 880 series meets the connectivity requirements of today's high-demand professional print solutions.





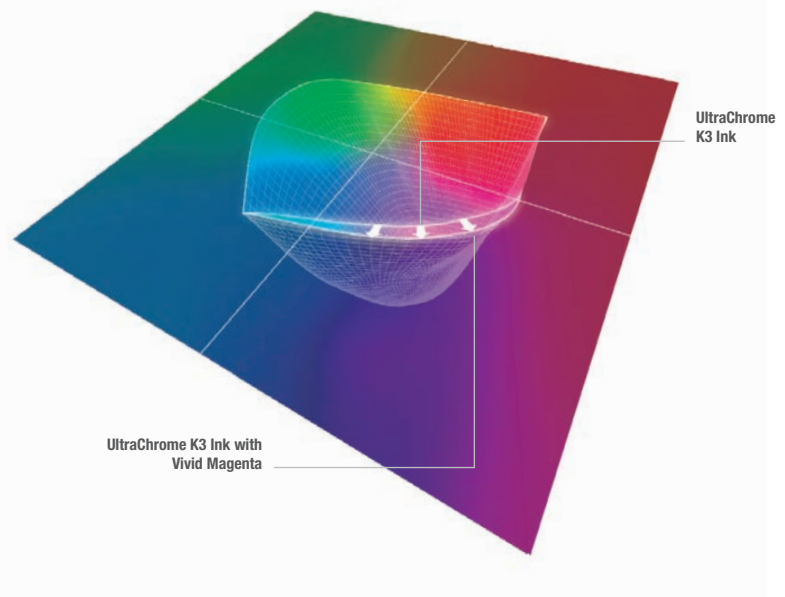
# Wide Colour Gamut

## Epson UltraChrome™ K3 Ink with Vivid Magenta

In building on the enormous advances made with Epson UltraChrome K3 Ink, Epson scientists developed two new inks – Vivid Magenta and Vivid Light Magenta – which utilise a new high-density form of magenta pigment inks.

With the introduction of the two new inks to the Epson UltraChrome K3 ink family, the Epson Stylus™ Pro 880 series eight-colour ink set, gives it the ability to generate prints using a significantly expanded colour gamut that has advantages over conventional 12 colour ink sets.

An additional benefit of the new Epson UltraChrome K3 Ink with Vivid Magenta is a reduction in the metamerism effect, thereby delivering an overall improvement in colour reproduction accuracy.



UltraChrome K3



UltraChrome K3 VM/VLM\*

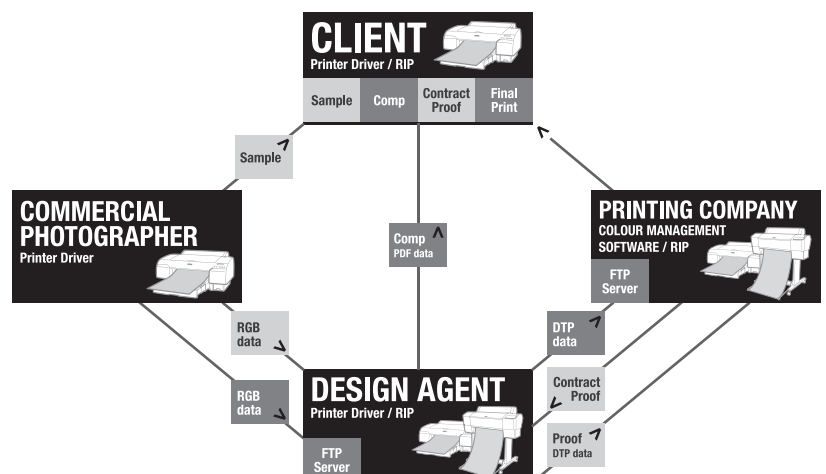


\* Conceptual images for reference only

## The Ultimate in Colour Consistency

To achieve the ultimate in colour consistency between printers, each Epson Stylus Pro 880 series printer is colorimetric calibrated at the factory using high precision spectrophotometers.

In using spectrophotometers, each individual printer is measured against a predetermined value and, where necessary, the printers are re-calibrated to ensure consistency with each colour. As a result, colour proofs, photographic prints and fine-art prints from different printers of the same model remain totally consistent.



## Excellent Short and Long Term Stability

When Epson UltraChrome™ K3 Ink with Vivid Magenta is fired onto the media by the Micro Piezo™ print head, it is rapidly absorbed deep into the substrate and as a result, colours become resistant to change and stabilise quickly. With genuine Epson media, the new ink delivers prints with:

- Stable colour in just 30 minutes.
- Lightfastness ratings of up to 75 years\* for colour and up to 200 years\* for black-and-white prints
- Excellent water resistance
- Improved scratch resistance

## Three Level Black Ink Technology

Epson UltraChrome K3 Ink with Vivid Magenta eliminates the colour twist and short tonal gradation problems traditionally faced by black-and-white photographers using digital printers, delivering black-and-white prints that rival those created with silver-halide processes. A three level black ink technology – Black, Light Black and Light Light Black – gives the Epson Stylus™ Pro 880 series black-and-white prints:

- Smooth tonal gradation with no colour twist
- Rich shadow and highlight detail
- High, black D-max with glossy media
- Unrivalled neutral grey tones

The use of three black inks also allows for a more stable and accurate grey balance which provides professional users with accurate colour control due to the smaller quantity of colour inks used.



# Powerful Media Versatility

## Automatic Media Cutter

An automatic media cutter on the Epson Stylus Pro 880 series helps streamline the production and post-production processes by accurately and cleanly cutting roll media prints. By taking advantage of the printers True BorderFree™ printing and automatic media cutter, prints can be delivered ready for immediate mounting.

## Thick Media Support up to 1.5mm

Adding significantly to the versatility of the Epson Stylus Pro 880 series is its ability to handle media up to 1.5mm in thickness. With this ability, the printer can produce high quality output ready for story-board presentations, signage or photographic images for immediate framing – eliminating the need for mounting.

\* Pertains to information on the specifications page

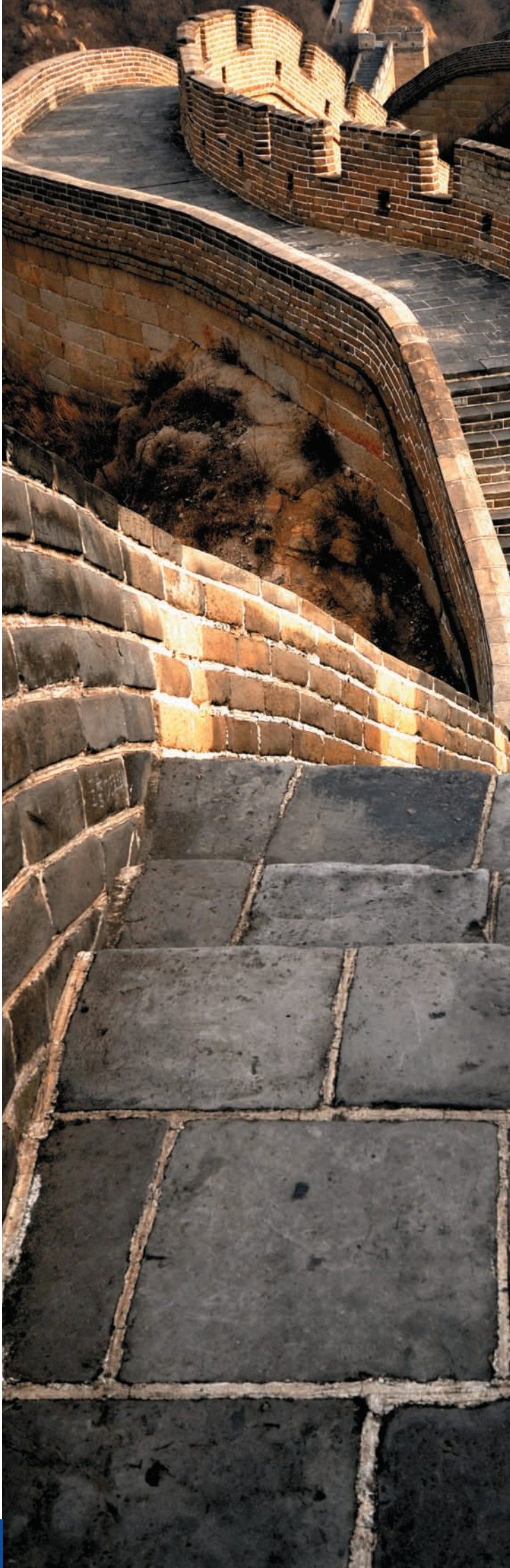
# Options and Consumables

Product Description	Code
<b>Printers</b>	
Epson Stylus™ Pro 4880	PRO4880
<b>Options</b>	
2/3 Inch Dual Roll Feed Spindle	C12C811171
2/3 Inch Dual Roll Feed Spindle High Tension	C12C811191
Auto Cutter Spare Blade	C12C815291
Roll Paper Belt	C12C890121
Maintenance Tank	C12C890191
Borderless Print Spacer for 420mm and 8" Roll Paper	C12C811201
Printer Cabinet	7100321
<b>Warranty</b>	
1 Year Extended Warranty	1YWPRO4880
2 Year Extended Warranty	2YWPRO4880
<b>Software</b>	
Epson PageProofer	3100026
Epson CopyFactory	3100027
<b>Ink Cartridges 110ml UltraChrome™ K3 Ink with Vivid Magenta</b>	
Photo Black	C13T605100
Cyan	C13T605200
Vivid Magenta	C13T605300
Yellow	C13T605400
Light Cyan	C13T605500
Vivid Light Magenta	C13T605600
Light Black	C13T605700
Light Light Black	C13T605900
Matte Black	C13T613800
<b>Ink Cartridges 220ml UltraChrome K3 Ink with Vivid Magenta</b>	
Photo Black	C13T606100
Cyan	C13T606200
Vivid Magenta	C13T606300
Yellow	C13T606400
Light Cyan	C13T606500
Vivid Light Magenta	C13T606600
Light Black	C13T606700
Light Light Black	C13T606900
Matte Black	C13T614800

Product Description	Code
<b>Printers</b>	
Epson Stylus™ Pro 7880	PRO7880
<b>Options</b>	
2/3 Inch Dual Roll Feed Spindle	C12C811161
2/3 Inch Dual Roll Feed Spindle High Tension	C12C811155
Manual Cutter Unit	C12C815231
Manual Cutter Spare Blade	C12C815192
Auto Cutter Spare Blade	C12C815291
Roll Paper Belt	C12C890121
Maintenance Tank	C12C890191
<b>Warranty</b>	
1 Year Extended Warranty	1YWPRO7880
2 Year Extended Warranty	2YWPRO7880
<b>Software</b>	
Epson PageProofer	3100026
Epson CopyFactory	3100027
<b>Ink Cartridges 110ml UltraChrome™ K3 Ink with Vivid Magenta</b>	
Photo Black	C13T602100
Cyan	C13T602200
Vivid Magenta	C13T602300
Yellow	C13T602400
Light Cyan	C13T602500
Vivid Light Magenta	C13T602600
Light Black	C13T602700
Light Light Black	C13T602900
Matte Black	C13T611800
<b>Ink Cartridges 220ml UltraChrome K3 Ink with Vivid Magenta</b>	
Photo Black	C13T603100
Cyan	C13T603200
Vivid Magenta	C13T603300
Yellow	C13T603400
Light Cyan	C13T603500
Vivid Light Magenta	C13T603600
Light Black	C13T603700
Light Light Black	C13T603900
Matte Black	C13T612800

Product Description	Code
<b>Printers</b>	
Epson Stylus™ Pro 9880	PRO9880
<b>Options</b>	
2/3 Inch Dual Roll Feed Spindle	C12C811151
2/3 Inch Dual Roll Feed Spindle High Tension	C12C811152
Take Up Reel Core	C12C815121
Auto Take Up Reel Unit	C12C815251
Manual Cutter Unit	C12C815182
Manual Cutter Spare Blade	C12C815192
Auto Cutter Spare Blade	C12C815291
Roll Paper Belt	C12C890121
Maintenance Tank	C12C890191
<b>Warranty</b>	
1 Year Extended Warranty	1YWPRO9880
2 Year Extended Warranty	2YWPRO9880
<b>Software</b>	
Epson PageProofer	3100026
Epson CopyFactory	3100027
<b>Ink Cartridges 110ml UltraChrome™ K3 Ink with Vivid Magenta</b>	
Photo Black	C13T602100
Cyan	C13T602200
Vivid Magenta	C13T602300
Yellow	C13T602400
Light Cyan	C13T602500
Vivid Light Magenta	C13T602600
Light Black	C13T602700
Light Light Black	C13T602900
Matte Black	C13T611800
<b>Ink Cartridges 220ml UltraChrome K3 Ink with Vivid Magenta</b>	
Photo Black	C13T603100
Cyan	C13T603200
Vivid Magenta	C13T603300
Yellow	C13T603400
Light Cyan	C13T603500
Vivid Light Magenta	C13T603600
Light Black	C13T603700
Light Light Black	C13T603900
Matte Black	C13T612800



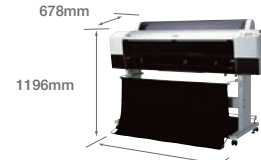
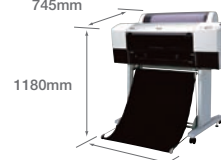
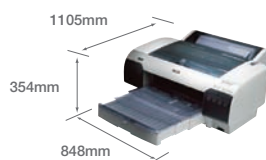


# Media

Product Description	Weight	Type	Size	Code
Premium Glossy Photo Paper (250)	255gsm	Roll	16" x 30.5m 24" x 30.5m 44" x 30.5m	C13S041742 C13S041638 C13S041640
Premium Glossy Photo Paper (250)	255gsm	Cut Sheet	A4 (20 Sheets) A3 (20 Sheets) A3+ (20 Sheets) A2 (25 Sheets)	C13S041285 C13S041288 C13S041289 C13S042091
Photo Paper Gloss (250)	250gsm	Roll	17" x 30.5m 24" x 30.5m 44" x 30.5m	C13S041892 C13S041893 C13S041895
Premium Semigloss Photo Paper (250)	255gsm	Roll	16" x 30.5m 24" x 30.5m 36" x 30.5m 44" x 30.5m	C13S041743 C13S041641 C13S041642 C13S041643
Premium Glossy Photo Paper (170)	162gsm	Roll	16.5" x 30.5m 24" x 30.5m 44" x 30.5m	C13S042076 C13S041390 C13S041392
Premium Semigloss Photo Paper (170)	162gsm	Roll	24" x 30.5m 36" x 30.5m 44" x 30.5m	C13S041393 C13S041394 C13S041395
Premium Semigloss Photo Paper	251gsm	Cut Sheet	A4 (20 Sheets) A3 (20 Sheets) A3+ (20 Sheets) A2 (25 Sheets)	C13S041332 C13S041334 C13S041328 C13S042093
Proofing Paper White Semimatte (250)	250gsm	Roll	13" x 30.5m 17" x 30.5m 24" x 30.5m 36" x 30.5m 44" x 30.5m	C13S042002 C13S042003 C13S042004 C13S042005 C13S042006
Premium Luster Photo Paper (260)	260gsm	Roll	300mm x 30.5m 16" x 30.5m 24" x 30.5m 44" x 30.5m	C13S042078 C13S042079 C13S042081 C13S042083
Premium Luster Photo Paper (250)	235gsm	Cut Sheet	17" x 22" (25 Sheets) A3+ (50 Sheets) A2 (25 Sheets)	C13S041828 C13S041407 C13S042123
Singleweight Matte Paper	115gsm	Roll	17" x 40m 24" x 40m 36" x 40m	C13S041746 C13S041853 C13S041854
Singleweight Matte Paper	115gsm	Cut Sheet	A3+ (100 Sheets) A2 (100 Sheets)	C13S041909 C13S041910
Doubleweight Matte Paper	180gsm	Roll	24" x 25m 36" x 25m 44" x 25m	C13S041385 C13S041386 C13S041387
Enhanced Matte Paper	189gsm	Roll	17" x 30.5m 24" x 30.5m 44" x 30.5m	C13S041725 C13S041595 C13S041597
Enhanced Matte Paper	192gsm	Cut Sheet	17" x 22" (50 Sheets) A2" (50 Sheets)	C13S041908 C13S042095
Enhanced Matte Poster Board	1.3mm 1.3mm	Cut Sheet Cut Sheet	24" x 30" 30" x 40"	C13S041598 C13S041599
Archival Matte Paper	189gsm	Cut Sheet	A4 (50 Sheets) A3 (50 Sheets) A3+ (50 Sheets)	C13S041342 C13S041344 C13S041340
Velvet Fine Art Paper	260gsm	Cut Sheet	A3+ (20 Sheets) A2 (25 Sheets)	C13S041637 C13S042096
UltraSmooth Fine Art Paper	250gsm	Roll	17" x 15.2m 24" x 15.2m 44" x 15.2m	C13S042073 C13S041782 C13S041783
UltraSmooth Fine Art Paper	325gsm	Cut Sheet	A3+ (25 Sheets) A2 (25 Sheets) 17" x 22" (25 Sheets)	C13S041896 C13S042105 C13S041897
Textured Fine Art Paper	225gsm	Roll	17" x 15.2m 24" x 15.2m 44" x 15.2m	C13S041745 C13S041447 C13S041449
Textured Fine Art Board	0.69mm 0.69mm	Cut Sheet Cut Sheet	24" x 30" 36" x 44"	C13S041450 C13S041451
Watercolor Paper-Radiant White	225gsm	Roll	24" x 18m 36" x 18m 44" x 18m	C13S041396 C13S041397 C13S041398
Watercolor Paper-Radiant White	225gsm	Cut Sheet	A3+ (20 Sheets)	C13S041352
Heavyweight Matte Paper A3+	167gsm	Cut Sheet	A3+ (50 Sheets)	C13S041263
Epson Premier Art Canvas - Gloss	350gsm	Roll	13" x 6m 17" x 12m 24" x 12m 36" x 12m 44" x 12m	7102589 7102590 7102591 7102592 7102593
Epson Premier Art Canvas - Matte	395gsm	Roll	13" x 6m 17" x 12m 24" x 12m 44" x 12m	7102599 7102600 7102601 7102602
Enhanced Synthetic Paper	84gsm	Roll	24" X 40m 44" X 40m	C13S041614 C13S041616
Enhanced Adhesive Synthetic Paper	135gsm	Roll	24" X 30.5m 44" X 30.5m	C13S041617 C13S041619



# Specifications



<b>EPSON STYLUS PRO 4880</b>	Product code: Pro4880
<b>SIZE</b>	17 inch wide (A2+)
<b>INK MODE</b>	8 colour
<b>RESOLUTION</b>	2880dpi x 1440dpi Epson Variable-sized Droplet Technology
<b>INK SYSTEM</b>	

9-Colour pigment ink [(C, VM, Y, LC, VLM, LLK, Photo K, Matte K) with 8 slots] only one of Matte K and Photo K could be used for a print. Ink conversion cartridges are required for ink change between Matte K and Photo K. Individual high capacity ink cartridge. Ink Capacity 110ml or 220ml

<b>PRINTER SPEED</b>	A2 size, Colour 360dpi x 360dpi : Approx. 1.3 minutes (Plain Paper : Draft Mode) 360dpi x 360dpi : Approx. 2.3 minutes (Plain Paper : Fast Mode) 720dpi x 360dpi : Approx. 2.7 minutes (Plain Paper : Quality Mode) 720dpi x 360dpi : Approx. 2.3 minutes (Coated Media : Fast Mode) 720dpi x 720dpi : Approx. 5.5 minutes (Coated Media : Quality Mode) 1440dpi x 720dpi : Approx. 7.9 minutes (Photo Mode) *8.7 minutes in case of the Advanced B&W Photo Mode 2880dpi x 1440dpi : Approx. 14.9 minutes (Super Photo Mode)
<b>PRINTER DRIVER</b>	Windows® 2000 / XP, XP x64, Vista, Vista x64, Mac® OS X 10.2.8 or later
<b>HEAD CONFIGURATION</b>	180 nozzles x 8 with VSDT
<b>MEDIA DIMENSIONS</b>	

<b>ROLL MEDIA</b>	Single roll: 1 roll < 150mm / Outside diameter Media width: 203.2mm - 431.8mm (8" - 17") Minimum media length: 279mm Media thickness: 0.08mm - 0.50mm
<b>CUT SHEET</b>	High capacity paper tray with automatic sheet feed (up to 250 pcs of Plain Paper) Manual insertion feeder for media up to 1.5mm Media width: Size: A4 / LTR - A2 / C, (210mm - 431.8mm) Media length: 279mm - 610mm Media thickness: 0.08mm - 1.50mm
<b>PAPER OUTPUT CAPABILITY</b>	Single roll system, Auto media cutter
<b>PRINTING AREA (WIDTH)</b>	

Max. 432mm [(Borderless Printing width: 8"(\*1), 10", 12", 14", 16", 17", 210mm, 257mm, 297mm, 300mm, 329mm, 400mm, 420mm (\*1)) \*1: 8" and 420mm requires spacer

<b>PRINT MARGINS</b>	
<b>ROLL MEDIA</b>	4 modes available; mode 1: 3mm on all edges (top, sides, bottom) mode 2: 15mm (top and bottom), 3mm (sides) mode 3: 15mm (top, sides, bottom) mode 4: 25mm (top and bottom) 3mm (side)
<b>SHEET MEDIA</b>	2 modes available; mode 1: 3mm (top, sides, bottom) mode 2: 3mm (top and sides) 14mm (bottom)
<b>TOTAL PRINT VOLUME</b>	20,000 A2 sheets
<b>CONSUMABLE PARTS</b>	Cutter blade, maintenance tank
<b>MAINTENANCE PARTS</b>	Pump unit, flushing box, head cleaner, cap assembly
<b>RELIABILITY</b>	

<b>CUTTER BLADE</b>	Coat paper, approx. 2,000 cuts
<b>FILM</b>	Approx. 1,000 cuts
<b>CARRIAGE MOTOR</b>	Approx. 20,000 A2 sheets
<b>ROLL DIMENSIONS</b>	Core diameter 2" or 3", Max. Outside Diameter Ø 150mm
<b>MEMORY</b>	64MB
<b>LANGUAGES</b>	ESC / P2 Raster
<b>INTERFACES (STANDARD)</b>	USB2.0 (Compatible with 1.1), Epson 10/100 Base Ethernet
<b>VOLTAGE / CURRENT / FREQUENCY</b>	100 - 120V version, 220 - 240V version
<b>POWER CONSUMPTION</b>	PRINTING: 59W or less STANDBY: 5W or less POWER OFF: 1W or less
<b>DIMENSIONS</b>	

848mm(W) x 765mm(D) x 354mm(H) (Paper Tray Storage Min. Size)  
848mm(W) x 1105mm(D) x 354mm(H) (Paper Tray Expand Max. Size)  
Approx. 39.4kg (excluding Ink and Media)

<b>WEIGHT</b>	
<b>UTILITY SOFTWARE</b>	
STANDARD	Epson LFP Remote Panel, Epson ColorBase
OPTIONAL	Epson PageProofer, Epson CopyFactory
<b>EPSON STYLUS PRO 7880</b>	Product code: Pro7880
<b>SIZE</b>	24 inch wide (A1+)
<b>INK MODE</b>	8 colour
<b>RESOLUTION</b>	2880dpi x 1440dpi Epson Variable-sized Droplet Technology
<b>INK SYSTEM</b>	

9-Colour pigment ink [(C, VM, Y, LC, VLM, LLK, Photo K, Matte K) with 8 slots] only one of Matte K and Photo K could be used for a print. Ink conversion cartridges are required for ink change between Matte K and Photo K. Individual high capacity ink cartridge. Ink Capacity 110ml or 220ml (Different ink as Pro 4000 / 7600 / 9600)

<b>PRINTER SPEED</b>	A1 size, Colour 360dpi x 360dpi : Approx. 2.2 minutes (Plain Paper : Draft Mode) 360dpi x 360dpi : Approx. 4.2 minutes (Plain Paper : Fast Mode) 720dpi x 360dpi : Approx. 5.0 minutes (Plain Paper : Quality Mode) 720dpi x 360dpi : Approx. 4.2 minutes (Coated Media : Fast Mode) 720dpi x 720dpi : Approx. 9.9 minutes (Coated Media : Quality Mode) 1440dpi x 720dpi : Approx. 14.3 minutes (Photo Mode) *15.8 minutes in case of the Advanced B&W Photo Mode 2880dpi x 1440dpi : Approx. 26.9 minutes (Super Photo Mode)
<b>PRINTER DRIVER</b>	Windows® 2000 / XP, XP x64, Vista, Vista x64, Mac® OS X 10.2.8 or later
<b>HEAD CONFIGURATION</b>	180 nozzles x 8 with VSDT
<b>MEDIA DIMENSIONS</b>	

<b>ROLL MEDIA</b>	Single roll: 1 roll < 150mm / Outside diameter Media width: 203.2mm - 610mm (8" - 24") Minimum media length: 279mm Media thickness: 0.08mm - 0.50mm
<b>CUT SHEET</b>	Manual insertion feeder for media up to 1.5mm Media width: Size: A4 / LTR - A1+ / 24", (210mm - 610mm) Media thickness: 0.08mm - 1.50mm
<b>PAPER OUTPUT CAPABILITY</b>	Output bin, Single roll system, Auto media cutter
<b>PRINTING AREA (WIDTH)</b>	

Max. 610mm (Borderless Printing width: 10", 13", 14", 16", 17", 515mm, 594mm, 609.6mm)

## PRINT MARGINS

<b>ROLL MEDIA</b>	3 modes available; mode 1: 3mm on all edges (top, sides, bottom) mode 2: 15mm (top and bottom), 3mm (sides) mode 3: 15mm (top, sides, bottom)
-------------------	--

<b>SHEET MEDIA</b>	2 modes available; mode 1: 3mm (top, sides, bottom) mode 2: 3mm (top and sides) 14mm (bottom)
--------------------	---

<b>TOTAL PRINT VOLUME</b>	20,000 A1+ sheets
<b>CONSUMABLE PARTS</b>	Cutter blade, maintenance tank
<b>MAINTENANCE PARTS</b>	Pump unit, flushing box, head cleaner, cap assembly
<b>RELIABILITY</b>	

<b>CUTTER BLADE</b>	Coat paper, approx. 2,000 cuts
<b>FILM</b>	Approx. 1,000 cuts
<b>CARRIAGE MOTOR</b>	Approx. 20,000 A1+ sheets
<b>ROLL DIMENSIONS</b>	Core diameter 2" or 3", Max. Outside Diameter Ø 150mm
<b>MEMORY</b>	64MB
<b>LANGUAGES</b>	ESC / P2 Raster
<b>INTERFACES (STANDARD)</b>	

<b>VOLTAGE / CURRENT / FREQUENCY</b>	100 - 120V version, 220 - 240V version
<b>POWER CONSUMPTION</b>	PRINTING: 55W or less STANDBY: 6W or less POWER OFF: 1W or less
<b>DIMENSIONS</b>	

1178mm(W) x 501mm(D) x 560mm(H)  
1178mm(W) x 745mm(D) x 1180mm(H) (with optional stand)  
Approx. 48.9kg (excluding Ink and Media) / Stand approx. 10.5kg

<b>WEIGHT</b>	
<b>UTILITY SOFTWARE</b>	
STANDARD	Epson LFP Remote Panel, Epson ColorBase
OPTIONAL	Epson PageProofer, Epson CopyFactory
<b>EPSON STYLUS PRO 9880</b>	Product code: Pro9880
<b>SIZE</b>	44 inch wide (B0+)
<b>INK MODE</b>	8 colour
<b>RESOLUTION</b>	2880dpi x 1440dpi Epson Variable-sized Droplet Technology
<b>INK SYSTEM</b>	

<b>PRINTER SPEED</b>	B0+ size, Colour 360dpi x 360dpi : Approx. 5.1 minutes (Plain Paper : Draft Mode) 360dpi x 360dpi : Approx. 10.9 minutes (Plain Paper : Fast Mode) 720dpi x 360dpi : Approx. 13.6 minutes (Plain Paper : Quality Mode) 720dpi x 360dpi : Approx. 10.9 minutes (Coated Media : Fast Mode) 720dpi x 720dpi : Approx. 29.0 minutes (Coated Media : Quality Mode) 1440dpi x 720dpi : Approx. 42.5 minutes (Photo Mode) *47.3 minutes in case of the Advanced B&W Photo Mode 2880dpi x 1440dpi : Approx. 81.7 minutes (Super Photo Mode)
<b>PRINTER DRIVER</b>	Windows® 2000 / XP, XP x64, Vista, Vista x64, Mac® OS X 10.2.8 or later
<b>HEAD CONFIGURATION</b>	180 nozzles x 8 with VSDT
<b>MEDIA DIMENSIONS</b>	

<b>ROLL MEDIA</b>	Single roll: 1 roll < 150mm / Outside diameter Media width: 203.2mm - 1118mm (8" - 44") Minimum media length: 279mm Media thickness: 0.08mm - 0.50mm
<b>CUT SHEET</b>	Manual insertion feeder for media up to 1.5mm Media width: Size: A4 / LTR - A0+ / 44", (210mm - 1118mm) Media thickness: 0.08mm - 1.50mm
<b>PAPER OUTPUT CAPABILITY</b>	Output bin, Single roll system, Auto media cutter
<b>PRINTING AREA (WIDTH)</b>	

Max. 1118mm (Borderless Printing width: 10", 13", 14", 16", 17", 515mm, 594mm, 609.6mm, 728mm, 914.4mm, 1117.6mm)

<b>PRINT MARGINS</b>	
<b>ROLL MEDIA</b>	3 modes available; mode 1: 3mm on all edges (top, sides, bottom) mode 2: 15mm (top and bottom), 3mm (sides) mode 3: 15mm (top, sides, bottom)
<b>SHEET MEDIA</b>	2 modes available; mode 1: 3mm (top, sides, bottom) mode 2: 3mm (top and sides) 14mm (bottom)
<b>TOTAL PRINT VOLUME</b>	20,000 B0+ sheets
<b>CONSUMABLE PARTS</b>	Cutter blade, maintenance tank
<b>MAINTENANCE PARTS</b>	Pump unit, flushing box, head cleaner, cap assembly
<b>RELIABILITY</b>	

<b>CUTTER BLADE</b>	Coat paper, approx. 2,000 cuts
<b>FILM</b>	Approx. 1,000 cuts
<b>CARRIAGE MOTOR</b>	Approx. 20,000 B0+ sheets
<b>ROLL DIMENSIONS</b>	Core diameter 2" or 3", Max. Outside Diameter Ø 150mm
<b>MEMORY</b>	128MB
<b>LANGUAGES</b>	ESC / P2 Raster
<b>INTERFACES (STANDARD)</b>	

<b>VOLTAGE / CURRENT / FREQUENCY</b>	100 - 120V version, 220 - 240V version
<b>POWER CONSUMPTION</b>	PRINTING: 50W or less STANDBY: 6W or less POWER OFF: 1W or less
<b>DIMENSIONS</b>	1702mm(W) x 678mm(D) x 1196mm(H) (stand included) Approx. 90kg (excluding Ink and Media)
<b>WEIGHT</b>	
<b>UTILITY SOFTWARE</b>	

STANDARD	Epson LFP Remote Panel, Epson ColorBase
OPTIONAL	Epson PageProofer, Epson CopyFactory



FOR HIGHEST QUALITY DEMAND EPSON INKS+PAPERS

## \* LIGHTFASTNESS TEST CRITERIA (INDOOR DISPLAY CONDITION)

### Test Conditions

- Under fluorescent light (Indoor Display Condition) with glass mount
- The data is calculated by Epson's accelerated test and it does not mean Epson guarantees periods.
- The estimated longevity does not indicate the colour changing and the durability of the paper itself.

Light Source: Fluorescent Light  
Intensity: 70,000 lux  
Temperature: 24°C  
Humidity: 60%RH  
Glass mount: 2mm, soda lime  
Fade criteria:  
Pure YMC 30% loss at OD = 1  
Display-life calculation: Total illuminance / (500lux x 10hours x 365days = 1year)

As an International ENERGY STAR Partner, Epson has determined that this product meets the International ENERGY STAR guidelines for energy efficiency. Epson is the registered trademark of SEIKO Epson Corporation. Epson Stylus, PerfectPicture, MicroPiezo, AcuPhoto Halftoning, QuickDry are the trademarks of SEIKO Epson Corporation. All other names and company names used herein are for identification purpose only and may be the trademarks or registered trademarks of their respective owners. Epson disclaims any and all rights in those marks. All print samples shown herein are simulations. Specifications are subject to change without notice.