

Phaser®  
6280  
A4  
Colour  
Laser Printer



Xerox Phaser® 6280  
Colour Laser Printer  
Impressive colour.  
Impressive price.



# Phaser® 6280 Colour Laser Printer

**Affordable colour laser printer that delivers for busy work teams.** Spectacular colour printing to give your documents the competitive edge, plus solid performance with built-in networking, advanced colour technology and unparalleled quality, all at a surprisingly low price.

## Performance that keeps up with your busy office

The Phaser 6280 printer can handle all the work your team can give it, with fast colour output and advanced capabilities.

- **Built for speed.** Fast 25 ppm for colour printing and 30 ppm for black and white.
- **Fast first page out.** In as little as 10 seconds.
- **Handle complex documents with ease.** Thanks to 256 MB of printer memory and a powerful 400 MHz processor.
- **Work team-ready.** Enabled with built-in networking and on-board support for Windows, Mac and Linux.
- **Flexible expansion.** Suited to fit your workload, including an optional hard drive, memory expansion and paper capacity up to 950 sheets.
- **Automatic two-sided printing.** Available with the Phaser 6280DN configuration.
- **Enterprise-ready.** Support includes device management tools such as CentreWare print management software.

## Low-cost colour printing for your business

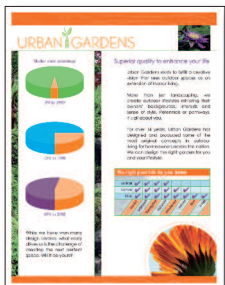
Add outstanding colour to your business documents at an exceptionally low price, with an array of advanced colour printing tools and money-saving features.

- **Exceptional quality.** Outstanding 600 x 600 x 4 dpi image quality and true Adobe® Postscript® 3™ for bright, accurate colours.
- **Bring out the clarity and detail.** The Phaser 6280 uses smaller, more uniform toner particles than conventional toner in every print with Xerox EA-HG toner.
- **Choose “Run Black”.** Enables you to print colour documents in black when colour cartridges are empty.
- **Better manage your printing costs.** The Phaser 6280 tracks the number of colour and black pages you’re printing via usage monitoring technology.
- **Paper-saving feature.** The Phaser 6280 automatically skips blank pages in a document.

## Quality engineering with world-class Xerox service and support

Xerox precision design and engineering deliver worry-free reliable performance.

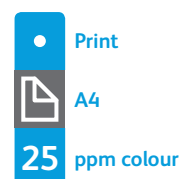
- **Well-built, durable construction.** A robust 70,000-pages/month duty cycle can meet the needs of even the busiest work team.
- **You’re covered with a one-year on-site warranty.** Providing the best service and support in the industry.
- **Engineered to be quiet.** Low-noise levels make it a great fit for office environments.
- **PrintingScout™.** Tracks your print jobs and provides immediate print-issue alerts with correction suggestions.
- **Environmentally conscious.** The Phaser 6280 is part of the Xerox Green World Alliance recycling programme. Ship your used cartridges to Xerox for free and we’ll take care of recycling.
- **Energy Star Qualified.** Saves on office utility bills.



Make your point in colour, and customers get it faster and retain it longer.

### Phaser® 6280 Quick Facts

- Print up to 25 ppm colour, 30 ppm black and white
- 600 x 600 x 4 dpi
- 400 MHz processor
- 256 MB memory expandable to 1,280 MB
- 70,000 pages/month duty cycle
- 400-sheet capacity, expandable to 950 sheets



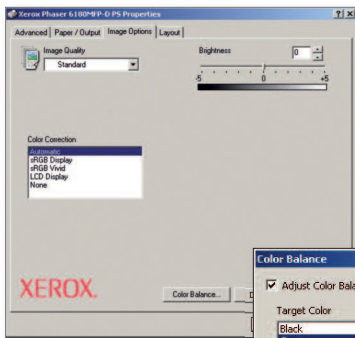
WxDxH:  
400 x 490 x 473 mm



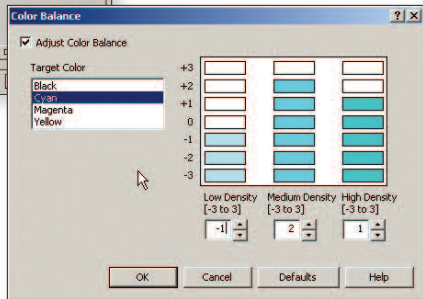
- 1 Fast, automatic two-sided printing is standard on the 6280DN configuration.
- 2 Intuitive front panel includes a toner gauge for a quick visual check of current toner levels.

- 3 150-sheet multipurpose tray supports custom sizes from A6 to A4.
- 4 250-sheet main tray feeds paper up to 220 gsm.

- 5 Add an optional 550-sheet feeder to boost total paper capacity to 950 – available as an extra tray or incorporated into a pedestal stand.
- 6 Optional Productivity Kit (includes 40 GB hard drive) provides more print features. Use Secure Print to authenticate users printing confidential documents.



Pantone® Colour approved solid-colour simulations and Xerox colour correction technology.



### Print to please.

The Phaser 6280 boasts advanced colour technology to bring your business documents to life



## Phaser® 6280 Printer Configurations

### Phaser 6280N

- 10/100 Base-T Ethernet and USB connectivity
- 256 MB memory (expandable to 1,280 MB)
- 150-sheet multipurpose tray and 250-sheet input tray for 400-sheet capacity

### Phaser 6280DN

- 6280N configuration plus:**
- Automatic two-sided printing

### Add Productivity

- Wireless network adapter
- Additional memory
- Productivity kit with 40 GB hard drive

### Add Paper Handling

- Automatic two-sided printing (standard on 6280DN)
- 550-sheet feeder
- 550-sheet feeder with pedestal stand

# Phaser® 6280

## Colour Laser Printer



	6280N	6280DN
<b>Speed</b>	Up to 25 ppm colour / 30 ppm black and white (A4)	
<b>Duty Cycle</b>	Up to 70,000 pages / month	
<b>Paper Handling</b> Paper input	Standard	<b>Multipurpose Tray:</b> 150 sheets; Custom sizes: 76.2 x 127 mm to 216 x 356 mm
		<b>Tray 1:</b> 250 sheets; Custom sizes: 148 x 210 mm to 216 x 356 mm (A6-A4)
	Optional	<b>Tray 2:</b> 550 sheets; Custom sizes: 148 x 210 mm to 216 x 356 mm (A6-A4)
Paper output	300 sheets	
Automatic two-sided printing	Optional	Standard
<b>Print</b> First-page-out-time	As fast as 10 seconds	
Resolution (max)	Up to 600 x 600 x 4 dpi	
Processor	400 MHz	
Memory (std / max)	256 MB / 1,280 MB	
Connectivity	USB 2.0, 10/100 Base-TX Ethernet, Optional wireless network adaptor	
Page description languages	PCL® 6, PCL® 5e, Adobe® PostScript® 3™	
Print features	Standard	N-up, Fit to page, Booklet printing, Skip blank pages, Transparency separators, Run black, Covers/Separators*, Poster printing*, Watermarks*, Overlays*, Banner sheets*, Draft mode*
	Optional	Productivity Kit (includes 40 GB hard drive) enables secure / proof / personal / saved print, Hard disk collation, Extended font / form storage
<b>Security</b>	IPv6, IP Sec, SNMPv3, IP Filtering, HTTPS/SSL, 802.1x, Secure Print** (with additional hard drive option), password protected administrative settings	
<b>Warranty</b>	One-year on-site warranty† Plus optional service extensions available	

\* Accessed via PCL Driver

\*\* Requires optional memory or hard drive

† Products purchased under a 'PagePack' agreement do not carry a warranty. Please refer to your service agreement for full details of your enhanced service package.

### Device Management

Phaser Installer, CentreWare® IS Embedded Web Server, CentreWare Web, PrintingScout™, Email alerts

### Print Drivers

Windows® 2000/XP/Vista, Server 2003/2008, Xerox Global Print Driver, Xerox Mobile Express Driver, Mac OS® version 10.3 and above, Linux: SUSE™, Red Hat®, TurboLinux 10 Desktop

### Font Capability

136 PostScript® fonts; 81 PCL® fonts

### Media Handling

Multipurpose Tray, Tray 2, Tray 3 (optional): 65 – 220 gsm

Media types: Plain paper, glossy, envelopes, labels, transparencies, cardstock, postcards, Two sided printing: 65 – 163 gsm

### Colour Standards

PANTONE® Colour approved solid-colour simulations, Colour Correction, ICC Profile, Colour Sync

### Operating Environment

Temperature: Storage: -20° to 40° C

Operating: 10° to 32° C

Humidity: 5% to 85%

Sound pressure levels:

Printing: 51.4 dB(A)

Standby: 30.1 dB(A)

Sound power levels:

Printing: 6.33 B, Standby: 4 B

Warm-up time (from sleep mode): 30 seconds

### Electrical

Power: 220–240 VAC, 50/60 Hz

Power consumption:

Standby: 70 W

Printing: 450 W

Power save: 4.3 W

ENERGY STAR® qualified

### Dimensions (WxDxH)

6280N: 400 x 490 x 473 mm

Weight: 24.5 kg

Package Dimensions (WxDxH):

560 x 650 x 600 mm

Weight: 29.7 kg

6280DN: 400 x 490 x 473 mm

Weight: 29.25 kg

Optional 550-sheet Tray 2: 364 x 400 x 86 mm

### Certifications

FCC Part 15, Class B, Listed UL 60950-1/CSA 60950-1-03, CE Mark applicable to Directives 2006/95/EC and 2004/108/EC, Section 508 ADA

### What comes in the box

- Phaser 6280 Printer
- Print Cartridge (2,200 (CMY) print capacity<sup>1</sup>, (3,000 (K) print capacity<sup>1</sup>)
- Software and Documentation CD (with User Manual, Quick Installation Guide, Registration Card, Warranty Statement)
- Power cord

### Supplies Recycling Programme

Consumables for the Phaser 6280 are part of the Xerox Green World Alliance Supplies Recycling Programme. For more information, please visit the Green World Alliance website at [www.xerox.com/gwa](http://www.xerox.com/gwa)

### Supplies

Standard-Capacity Print Cartridge<sup>1</sup>:

Black: 3,000 std. pages 106R01391  
Cyan: 2,200 std. pages 106R01388  
Magenta: 2,200 std. pages 106R01389  
Yellow: 2,200 std. pages 106R01390

High-Capacity Print Cartridge<sup>1</sup>:

Black: 7,000 std. pages 106R01395  
Cyan: 5,900 std. pages 106R01392  
Magenta: 5,900 std. pages 106R01393  
Yellow: 5,900 std. pages 106R01394

### Options

550-sheet feeder 097S03744  
550-sheet pedestal stand/feeder 097S03833  
256 MB Memory 097S03743  
512 MB Memory 097S03635  
Duplex unit 097S03746

Productivity Kit (includes 40 GB hard drive) 097S03967

Wireless network adaptor  
- European power converter 097S03741  
- UK power converter 097S03742

<sup>1</sup> Average standard pages. Declared Yield in accordance with ISO/IEC 19798. Yield will vary based on image, area coverage and print mode.

