



JLAB | STUDIO 2 WIRELESS HEADPHONES

We love that you are rocking JLab!  
We take pride in our products and fully stand behind them.



**YOUR WARRANTY**

All warranty claims are subject to JLab authorization and at our sole discretion. Retain your proof of purchase to ensure warranty coverage.



**CONTACT US**

Reach out to us at [support@jlab.com](mailto:support@jlab.com) or visit [jlab.com/contact](http://jlab.com/contact)

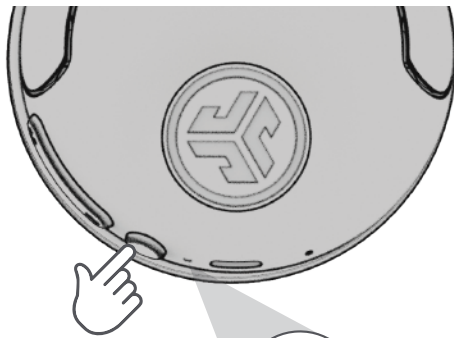
**REGISTER TODAY**

[jlab.com/register](http://jlab.com/register)

Product updates | How-to tips  
FAQs & more

**PAIRUP**

1

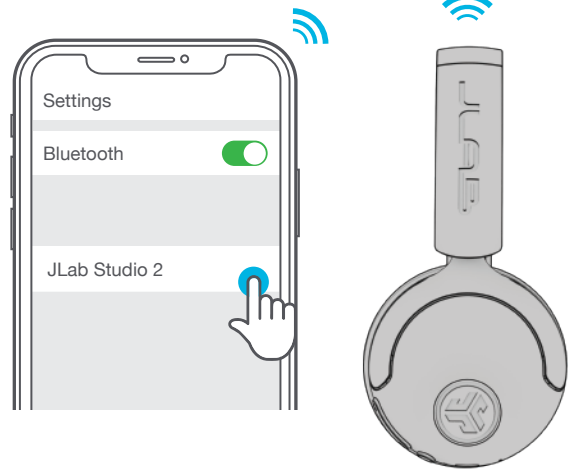


Press and hold button for **8 seconds**. Release. Lights will **flash blue/red**.



2

Enter your Bluetooth device settings and select JLab Studio 2.

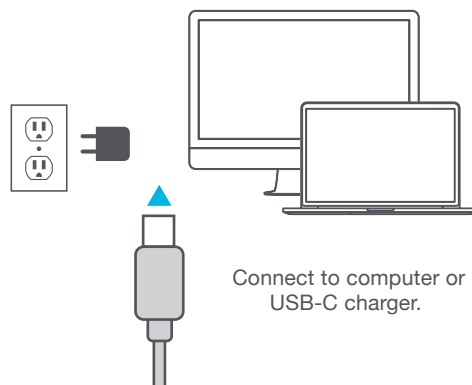
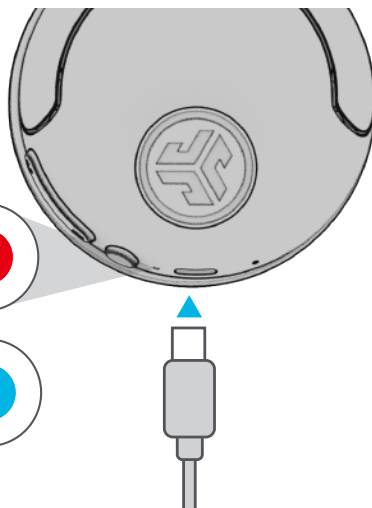
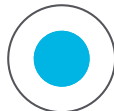


**GET CHARGED**

CHARGING



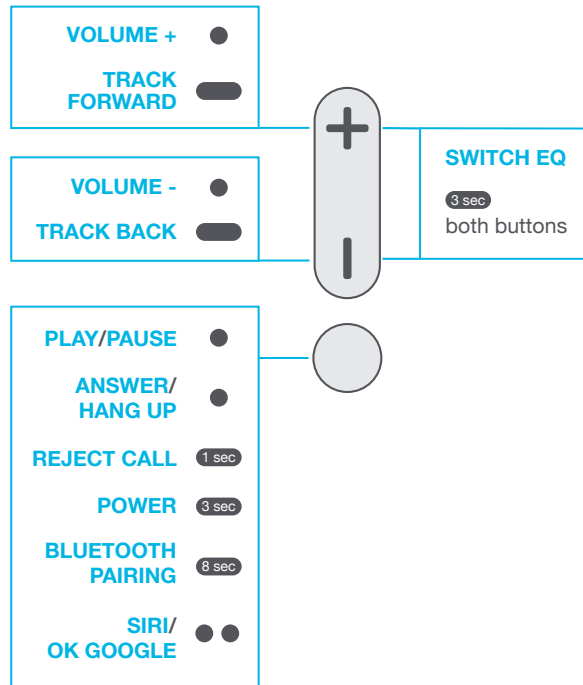
CHARGED



Connect to computer or USB-C charger.

# GO AHEAD, PRESS THE BUTTON

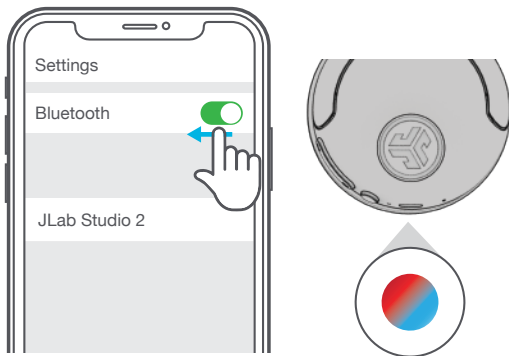
1x Press ●    2x Press ● ●    Press Hold —



## MULTIPOINT

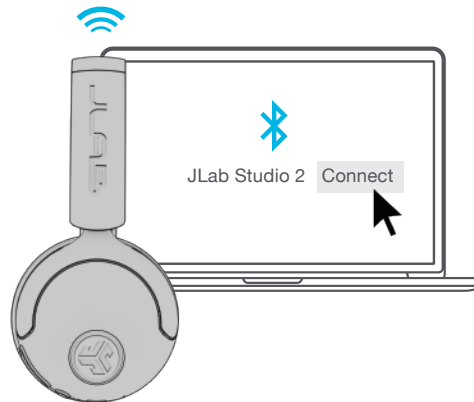
1

Once **FIRST** device is connected, turn off Bluetooth in device settings. Studio 2 will enter Bluetooth Pairing.



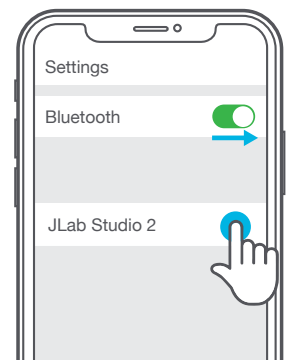
2

Enter your **SECOND** device Bluetooth settings and connect to Studio 2.



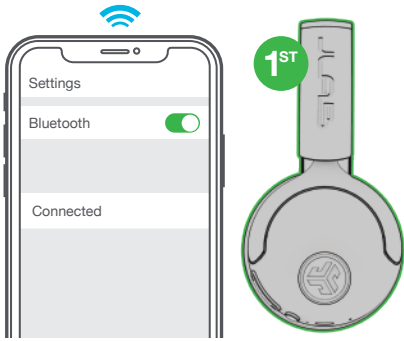
3

Enter **FIRST** device settings. Turn on Bluetooth and reconnect to Studio 2.



## LabShare (Share between two Studio 2 headphones)

**1** Connect **FIRST** headphone to device.



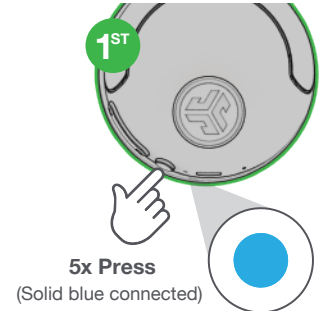
**2** **SECOND** headphone should be powered off. **Press hold** until flashing blue/red.



**3** **SECOND** headphone **5x Press** and blinks blue.



**4** **FIRST** headphone **5x Press** to share.



## DOWNLOAD THE MOBILE APP

Customize Studio 2 features and update the latest software.



[Shop products](#) | [Product alerts](#) | [Burn-in your headphones](#)

JLab Store + Burn-in Tool



JLAB.COM