

ideapad 720S

PREMIUM PERFORMANCE IN AN ULTRASLIM PACKAGE

The Lenovo™ IdeaPad™ 720S offers feather-light portability with enough processing power to handle everything you do. Available in both 13" and 14" screen sizes, it's significantly thinner and lighter than the already sleek 520S. Featuring more premium metal surfaces, the revolutionary connectivity of Thunderbolt™ 3, additional storage and innovative upgrades like a fingerprint reader, the Lenovo IdeaPad 720S is a stylish powerhouse.

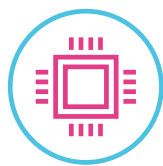
WHY YOU SHOULD BUY THE LENOVO IDEAPAD 720S



Extremely thin & light

The IdeaPad 720S is startlingly sleek. Pop it in your bag, and work or watch anywhere. It'll never weigh you down.

- 13" model: 1.1 kg and 13.6 mm thin
- 14" model: 1.55 kg and 15.9 mm thin



Powerful performance

Powered by a 7th Generation Intel® Core™ i7 processor, ample PCIe SSD storage, and up to 16 GB memory on the 14" (and 8 GB on the 13" model), you'll be able to multi-task with ease and speed.



Lenovo™



Stunning UHD clarity

Enjoy stunning visuals when you stream videos, watch your favorite TV series or browse photos online. Featuring FHD (14") or up to UHD (13") resolution and a redesign that significantly narrows the borders around the screen, the IdeaPad 720S provides the visual quality of a home theater.



Immersive sound

Featuring JBL® Premium Audio speakers, the IdeaPad 720S offers Dolby Audio™ for loud, clear audio. Or upgrade to the revolutionary Dolby Atmos®, which creates a breathtaking 360° immersive audio experience, placing you in the middle of the action. (Dolby Atmos® is only available on the 13" model).



WWW.LENOVO.COM



ideapad 720S

SPECIFICATIONS

Lenovo IdeaPad 720S-13IKB*, Lenovo IdeaPad 720S Touch-13IKB*, Lenovo IdeaPad 720S-14IKB*

PERFORMANCE

Processor

7th Generation Intel® Core™ i7 Processor

Operating System

Windows 10 Home

Graphics

720S-13IKB, 720S Touch-13IKB

Intel® Integrated Graphics

720S-14IKB

Intel® Integrated Graphics
NVIDIA® GeForce® 940MX Graphics

Camera & Microphone

0.3M with Single Microphone
HD with Single Microphone

Memory

720S-13IKB, 720S Touch-13IKB

4 GB DDR4; 8 GB DDR4

720S-14IKB

4 GB DDR4; 8 GB DDR4; 16 GB DDR4

Storage

720S-13IKB, 720S Touch-13IKB

128 GB PCIe SSD; 256 GB PCIe SSD;
512 GB PCIe SSD; 1 TB PCIe SSD

720S-14IKB

128 GB PCIe SSD; 256 GB PCIe SSD;
512 GB PCIe SSD

Audio

720S-13IKB, 720S Touch-13IKB

2 x 1.5W JBL® Speakers with Dolby Atmos®

720S-14IKB

2 x 1.5W JBL® Speakers with Dolby Audio™

Battery¹

720S-13IKB, 720S Touch-13IKB

Up to 8 Hours

720S-14IKB

Up to 14 Hours

DESIGN

Display

720S-13IKB

13.3" FHD (1920 x 1080) IPS
13.3" UHD (3840 x 2160) IPS

720S Touch-13IKB

13.3" FHD (1920 x 1080) IPS Touchscreen

720S-14IKB

14" FHD (1920 x 1080) IPS

Dimensions (W x D x H)

720S-13IKB, 720S Touch-13IKB

(mm) : 305.9 x 213.82 x 13.6

(inches) : 12" x 8.4" x 0.54"

720S-14IKB

(mm) : 320.7 x 222.8 x 15.9

(inches) : 12.6" x 8.78" x 0.63"

Weight

720S-13IKB

Starting at 2.4 lbs (1.1 kg)

720S Touch-13IKB

Starting at 2.6 lbs (1.2 kg)

720S-14IKB

Starting at 3.4 lbs (1.55 kg)

Additional Features

Fingerprint Reader²

Touchscreen³

Backlit Keyboard

Always-on Charging

Tone-on-Tone Color Options

720S-13IKB, 720S Touch-13IKB

Champagne Gold

Platinum Silver

Iron Grey

Rose Pink⁴

720S-14IKB

Champagne Gold

Platinum Silver

Rose Pink⁴

CONNECTIVITY

WLAN

1 x 1 WiFi 802.11 ac
2 x 2 WiFi 802.11 ac

Bluetooth®

Bluetooth® 4.1

I/O (Input/Output) Ports

720S-13IKB, 720S Touch-13IKB

1 x USB Type-C™
(Thunderbolt™ + DisplayPort™ + PD)

1 x USB Type-C™ (PD + USB 3.0)

2 x USB 3.0

Audio Jack

720S-14IKB

1 x USB Type-C™

(Thunderbolt™ + DisplayPort™ + PD)

1 x USB Type-C™ (PD + USB 3.0)

2 x USB 3.0

Audio Jack

HDMI™

4-in-1 Card Reader

PRELOADED SOFTWARE

- Lenovo App Explorer
- Lenovo Companion 3.0
- Lenovo ID
- Lenovo Settings
- McAfee LiveSafe™ (30-day trial)
- Microsoft Office 365 (30-day trial)



¹ All battery life claims are approximate and based on test results using the MobileMark® 2014 ver 1.5 battery life benchmark test. Actual results will vary, and depend on numerous factors including product configuration and usage, software, operating conditions, wireless functionality, power management settings, screen brightness and other factors. The maximum capacity of the battery will naturally decrease with time and usage. See <https://bapccom/products/mobilemark-2014/> for additional details.

² Optional.

³ Optional and enabled only for 13.3" FHD configuration.

⁴ PRC only.

LENOVO SERVICES

Warranty Upgrades – On-site/ In-Home Service

Maximizes PC uptime and productivity by providing convenient, fast repair services in your own home.

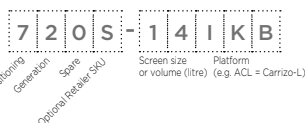
Accidental Damage Protection

Avoid the hassles of unexpected repair costs. Provides coverage for non-warranted damage incurred under normal operating conditions, such as minor spills, drops or damage to the integrated screen.

Warranty Extensions (1-to-3 Years Total Duration)

This fixed-term, fixed-cost service helps accurately budget for PC expenses, protect your valuable investment and potentially lower the cost of ownership over time.

* Example of Lenovo IdeaPad catalogue naming convention



Intel® platform codes

Haswell: IHW, Broadwell: IBD, Skylake: ISK, Kaby Lake: IKB, Cannon Lake: ICN, Braswell: IBR, Cherry Trail: ICR, Apollo Lake: IAP, Gemini Lake: IGM



WWW.LENOVO.COM

OPTIONS & ACCESSORIES



Lenovo 510
Wireless Mouse



Lenovo 500 2.0
Bluetooth® Speaker



Lenovo 15.6" NAVA
On-trend Backpack

Lenovo reserves the right to alter product offerings and specifications at any time, without notice. Lenovo makes every effort to ensure accuracy of all information but is not liable or responsible for any editorial, photographic or typographic errors. All images are for illustration purposes only. For full Lenovo product, service and warranty specifications visit www.lenovo.com. Lenovo makes no representations or warranties regarding third party products or services. **Trademarks:** The following are trademarks or registered trademarks of Lenovo: Lenovo, the Lenovo logo, ideapad, IdeaCentre, yoga and yoga home. Microsoft, Windows and Vista are registered trademarks of Microsoft Corporation. Ultrabook, Celeron, Celeron Inside, Core Inside, Intel, Intel Logo, Intel Atom, Intel Atom Inside, Intel Core, Intel Inside, Intel Inside Logo, Intel vPro, Itanium, Itanium Inside, Pentium, Pentium Inside, vPro Inside, Xeon, Xeon Phi, and Xeon Inside are trademarks of Intel Corporation in the U.S. and/or other countries. Other company, product and service names may be trademarks or service marks of others. Visit www.lenovo.com/lenovo/us/en/safecomp/ periodically for the latest information on safe and effective computing. ©2017 Lenovo. All rights reserved.



Lenovo™