

User Manual

For further information, refer to the Web Manual.

Web manual : www.Samsung.com → Owners & Support → Manuals & Downloads →
Product name search → HW-K850









SAFETY INFORMATION

- ✓ The following also applies to the Wireless Subwoofer (PS-KW1-3).

SAFETY WARNINGS

TO REDUCE THE RISK OF ELECTRIC SHOCK, DO NOT REMOVE THE COVER (OR BACK).

NO USER-SERVICEABLE PARTS ARE INSIDE. REFER SERVICING TO QUALIFIED SERVICE PERSONNEL.

	CAUTION RISK OF ELECTRIC SHOCK. DO NOT OPEN.	
	The lighting flash and arrowhead within the triangle indicates that there is dangerous voltage inside the product.	
	The exclamation point within the triangle indicates that there are important instructions accompanying the product.	
	Class II product : This symbol indicates that a safety connection to electrical earth (ground) is not required.	
	AC voltage : Rated voltage marked with this symbol is AC voltage.	
	DC voltage : Rated voltage marked with this symbol is DC voltage.	
	Caution. Consult instructions for use : This symbol instructs the user to consult the user manual for further safety related information.	

WARNING

- To reduce the risk of fire or electric shock, do not expose this appliance to rain or moisture.
- To prevent injury, this apparatus must be securely attached to the floor/wall in accordance with the installation instructions.
- This product contains chemicals known to the State of California to cause cancer and birth defects or other reproductive harm.

CAUTION

- Do not expose this apparatus to dripping or splashing. Do not put objects filled with liquids, such as vases on the apparatus.
- To turn this apparatus off completely, you must pull the power plug out of the wall socket. Consequently, the power plug must be easily and readily accessible at all times.

FCC NOTE (for U.S.A):

Class B FCC Statement

The included module(s) has been tested and found to comply with the limits for a Class B digital device, pursuant to Part 15 of the FCC Rules. These limits are designed to provide reasonable protection against harmful interference in a residential installation. This equipment generates, uses and can radiate radio frequency energy and, if not installed and used in accordance with the instructions, may cause harmful interference to radio communications. However, there is no guarantee that interference will not occur in a particular installation. If this equipment does cause harmful interference to radio or television reception, which can be determined by turning the equipment off and on, the user is encouraged to try to correct the interference by one of the following measures:

- Reorienting or relocating the receiving antenna.
- Increasing the separation between the equipment and receiver.
- Connecting the equipment to an outlet that is on a different circuit than the radio or TV.
- Consulting the dealer or an experienced radio/TV technician for help.

FCC Radiation Exposure Statement :

This equipment complies with FCC radiation exposure limits set forth for an uncontrolled environment.

This equipment should be installed and operated so there is at least 8 inches (20 cm) between the radiator and your body. This device and its antenna(s) must not be co-located or operated in conjunction with any other antenna or transmitter.

FCC Caution :

- Any changes or modifications not expressly approved by the party responsible for compliance could void the user's authority to operate this equipment. This device complies with Part 15 of the FCC Rules. Operation is subject to the following two conditions: (1) This device may not cause harmful interference, and (2) this device must accept any interference received, including interference that may cause undesired operation.
- This product satisfies FCC regulations when shielded cables and connectors are used to connect the unit to other equipment. To prevent electromagnetic interference with electric appliances, such as radios and televisions, use shielded cables and connectors for connections.

Important Safety Instructions

Read these operating instructions carefully before using the unit. Follow all the safety instructions listed below. Keep these operating instructions handy for future reference.

- 1) Read these instructions.
- 2) Keep these Instructions.
- 3) Heed all warnings.
- 4) Follow all instructions.
- 5) Do not use this apparatus near water.
- 6) Clean only with a dry cloth.
- 7) Do not block any ventilation openings. Install in accordance with the manufacturer's instructions.
- 8) Do not install near any heat sources such as radiators, heat registers, stoves, or other apparatus (including amplifiers) that produce heat.
- 9) Do not defeat the safety purpose of the polarized or grounding-type plug. A polarized plug has two blades with one wider than the other. A grounding type plug has two blades and a third grounding prong. The wide blade or the third prong are provided for your safety. If the provided plug does not fit into your outlet, consult an electrician for replacement of the obsolete outlet.
- 10) Protect the power cord from being walked on or pinched particularly at plugs, convenience receptacles, and the point where they exit from the apparatus.
- 11) Only use attachments/accessories specified by the manufacturer.
- 12) Use only with the cart, stand, tripod, bracket, or table specified by the manufacturer, or sold with the apparatus. When a cart is used, use caution when moving the cart/apparatus combination to avoid injury from tip-over.
- 13) Unplug this apparatus during lightning storms or when unused for long periods of time.
- 14) Refer all servicing to qualified service personnel. Servicing is required when the apparatus has been damaged in any way, such as when the power-supply cord or plug is damaged, liquid has been spilled or objects have fallen into the apparatus, the apparatus has been exposed to rain or moisture, does not operate normally, or has been dropped.



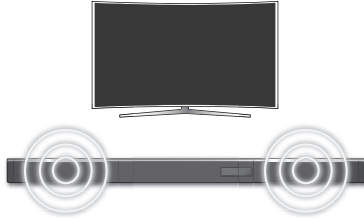
PRECAUTIONS

1. Ensure that the AC power supply in your house complies with the power requirements listed on the identification sticker located on the back of your product. Install your product horizontally, on a suitable base (furniture), with enough space around it for ventilation (3~4 inches). Make sure the ventilation slots are not covered. Do not place the unit on amplifiers or other equipment which may become hot. This unit is designed for continuous use. To fully turn off the unit, disconnect the AC plug from the wall outlet. Unplug the unit if you intend to leave it unused for a long period of time.
2. During thunderstorms, disconnect the AC plug from the wall outlet. Voltage peaks due to lightning could damage the unit.
3. Do not expose the unit to direct sunlight or other heat sources. This could lead to overheating and cause the unit to malfunction.
4. Protect the product from moisture (i.e. vases), and excess heat (e.g. a fireplace) or equipment creating strong magnetic or electric fields. Unplug the power cable from the AC wall socket if the unit malfunctions. Your product is not intended for industrial use. It is for personal use only. Condensation may occur if your product has been stored in cold temperatures. If transporting the unit during the winter, wait approximately 2 hours until the unit has reached room temperature before using.
5. The battery used with this product contains chemicals that are harmful to the environment. Do not dispose of the battery in the general household trash. Do not expose the battery to excess heat, direct sunlight, or fire. Do not short circuit, disassemble, or overheat the battery. Danger of explosion if the battery is replaced incorrectly. Replace only with the same or equivalent type.

FEATURES

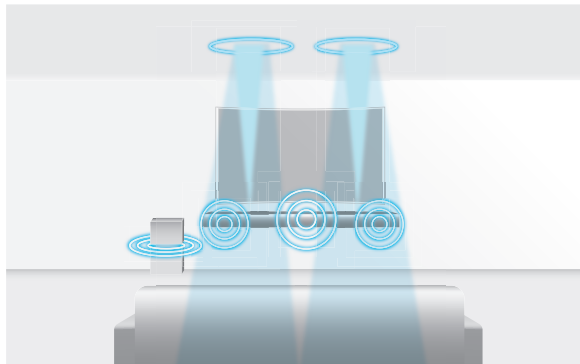
Lets you enjoy TV sound after connecting the Soundbar to your TV with or without a cable.

You can enjoy rich and realistic TV sound through the Soundbar connected to your TV with or without a cable.



- ✓ Refer to Method 1 on page 7 to see how to connect the Soundbar to your TV using an HDMI Cable.
- ✓ Refer to Method 2 on page 8 to see how to connect the Soundbar to your TV using a wireless network.

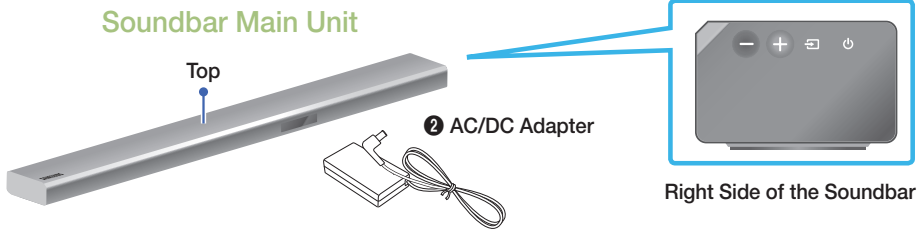
This product supports Dolby Atmos®.



* What is Dolby Atmos®?

Atmos technology enhances existing 5.1 channel surround sound systems by adding an overhead speaker. This envelops the listener in 360 degrees of sound, delivering an immersive, high-definition, rich, detailed, and deeper experience. See page 13 to learn how to connect the system.

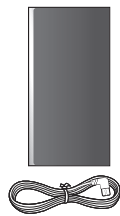
CHECKING THE COMPONENTS



Remote Control / Batteries

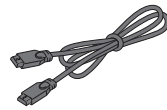


Subwoofer



① Power Cord

HDMI Cable

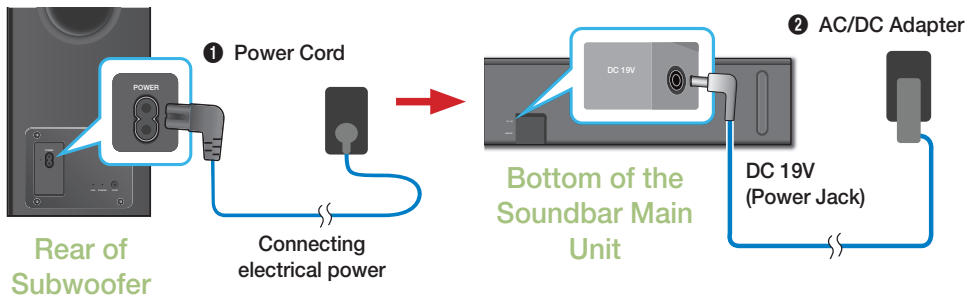


CONNECTING ELECTRICAL POWER

Use the power components (①, ②) to connect the power supplies in the following order:

Subwoofer → Soundbar Main Unit


- ✓ For more information about the power supply and power consumption, refer to the label attached to the product. (Label : Bottom of the Soundbar main unit)

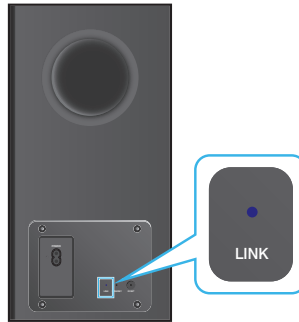


CONNECTING THE SOUNDBAR MAIN UNIT TO THE SUBWOOFER

You can enjoy rich bass tones and better sound quality by linking the subwoofer to the Soundbar main unit.

Automatic Connection

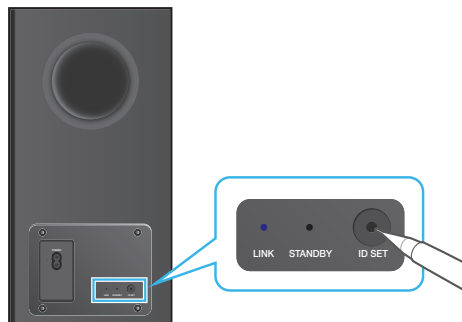
1. Connect a power supply to the subwoofer.
 2. Connect a power supply to the Soundbar, and then press the  button on the remote control or on the right side of the Soundbar.
 3. The subwoofer will be automatically connected to the Soundbar.
 4. When auto pairing is complete, the blue indicators at the rear of the subwoofer turn on.
- ✓ If the red indicator at the rear of the subwoofer is on or the blue indicator flashes continuously, auto pairing cannot occur. If this happens, connect the subwoofer manually, as shown below.
 - ✓ Important: Before you begin, put the batteries into the remote. See page 18 for instructions.



Rear of Subwoofer

Connecting the Subwoofer Manually if the Automatic Connection Fails

- ✓ **Before You Begin**
 - Make sure that the Soundbar and the subwoofer are plugged in.
 - Make sure that the Soundbar is turned on.
- 1. Press and hold **ID SET** on the rear of the subwoofer for at least 5 seconds. The red indicator on the rear of the subwoofer turns off and the blue indicator blinks.

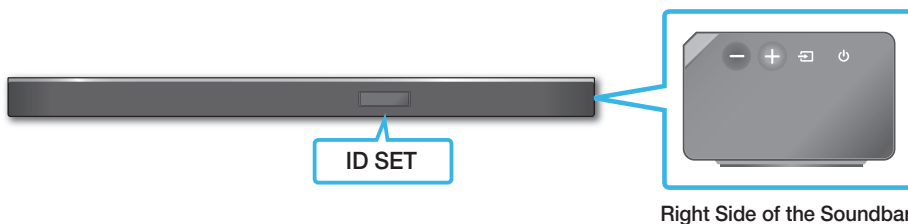


Rear of Subwoofer


2. Turn off the Soundbar.
3. Press and hold the **VOL** button on the remote control for at least 5 seconds with the Soundbar turned off (OFF).



4. The ID SET message appears on the display of the Soundbar for a short period of time, and then disappears.



Right Side of the Soundbar

5. When the blue indicator on the subwoofer blinks, turn on the power by pressing  button on the right side of the Soundbar or on the remote control.
 6. When the connection is successfully established, the blue indicator on the rear of the subwoofer turn on without blinking.
- ✓ If the connection process fails, the blue indicators will flash continuously. Go to Step 1 and start again.

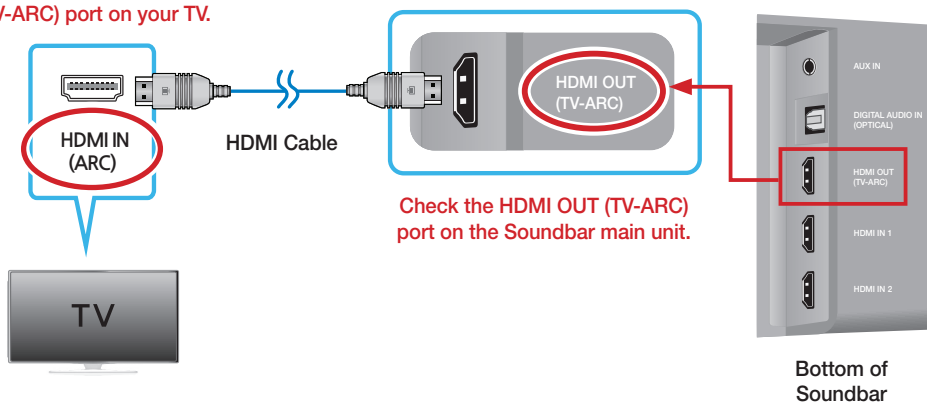
CONNECTING TO YOUR TV

You can enjoy TV sound after connecting the Soundbar to your TV with or without a cable.

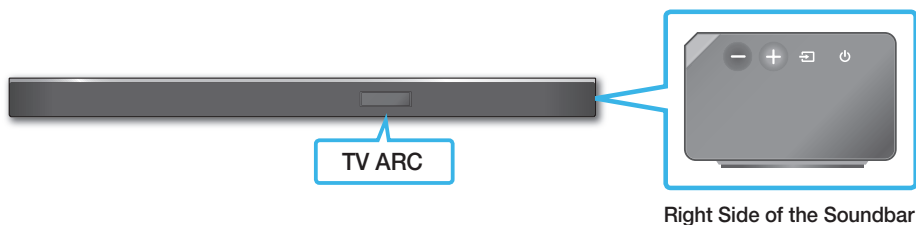
- ✓ Important: Before you begin, put the batteries into the remote. See page 18 for instructions.


Method 1. Connecting with a Cable

Check the **HDMI IN (TV-ARC)** port on your TV.



1. Connect the HDMI cable as shown in the illustration above.
2. TV ARC appears on the display window of the Soundbar main unit and the TV sound is played.



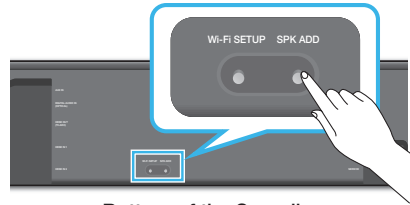
- ✓ If the TV sound is not played, press either  on the right side of the Soundbar or the **SOURCE** button on the remote control, and then select **D.IN** on the display window of Soundbar main unit. The **D.IN** mode changes to TV ARC and TV sound is output.
- ✓ If TV ARC does not appear on the display window of the Soundbar main unit, check that the cable is connected to the correct port.
- ✓ You can conveniently control the volume of the Soundbar and can set Auto Power Link to ON and have the Soundbar turn on automatically when you turn the TV on.

Method 2. Connecting to a Wireless Network

Installing the Samsung Multiroom App and Connecting Wirelessly

To install Samsung Multiroom app for the first time, follow the steps shown below.

1. Press and hold the **SPK ADD** button on the bottom of the Soundbar for more than 1 second.
 - There is a notification sound and the message **"ADD SPEAKER"** appears on the Soundbar's main unit. Afterwards, the message **"WIFI READY"** appears when standby-for-connection mode activates.



Bottom of the Soundbar

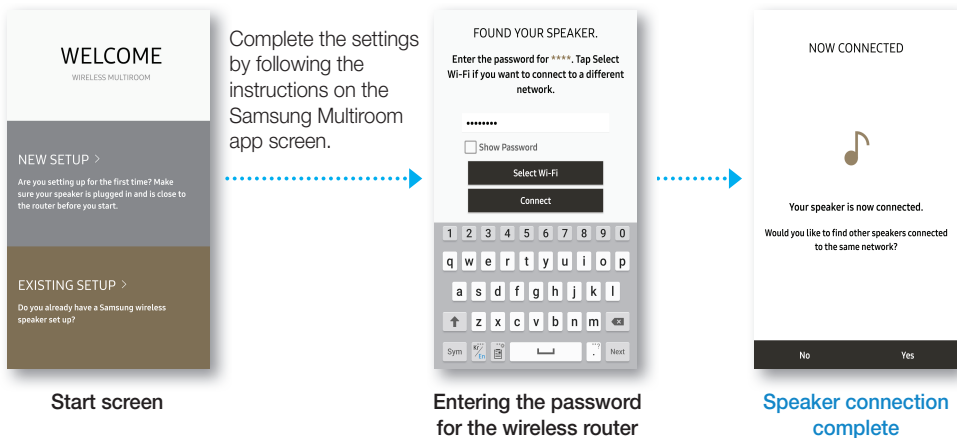
2. Connect your smart device (smart phone, tablet, etc.) to your wireless router.



3. Install the **Samsung Multiroom** app on your smart device (smart phone, tablet, etc.).
4. Launch the **Samsung Multiroom** app.



5. Complete the initial settings by following the instructions on the app screen.



Start screen

Entering the password for the wireless router

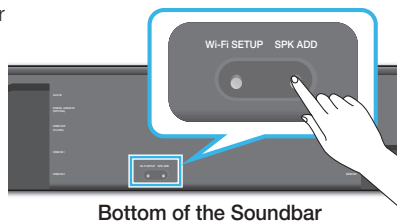
Speaker connection complete

- ✓ You must enter the password of your wireless router to connect your Soundbar to your wireless network through Samsung Multiroom app.
- ✓ If your wireless router has no designated password, the app completes the initial settings without asking you to enter a password.

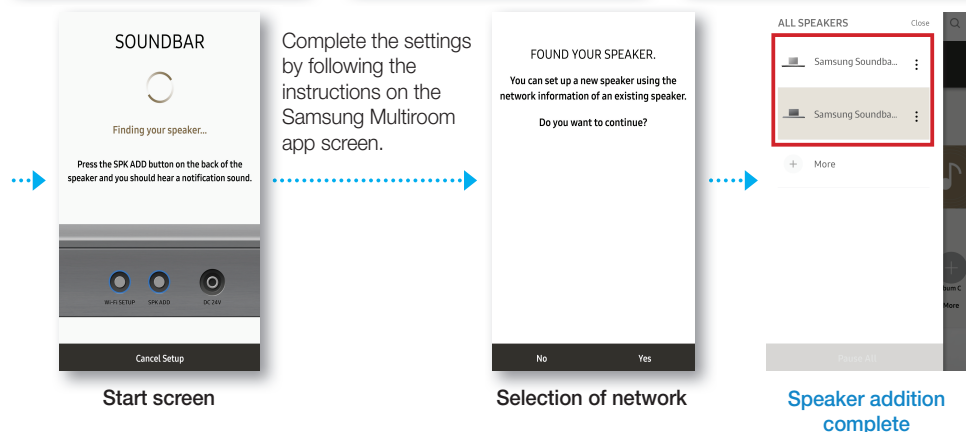
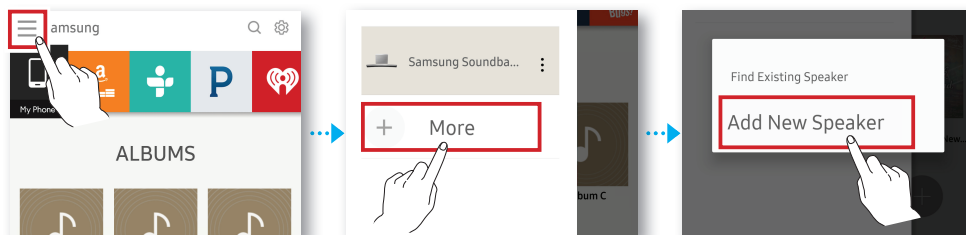
Adding the Soundbar to an Existing Multiroom Audio System

If the Samsung Multiroom app is already installed for use with another multiroom audio device, follow these steps to add the Soundbar.

1. Press and hold the **SPK ADD** button on the bottom of the Soundbar for more than 1 second.
 - There is a notification sound and the message **"ADD SPEAKER"** appears on the Soundbar's main unit. Afterwards, the message **"WIFI READY"** appears when standby-for-connection mode activates.
2. Connect your smart device (smart phone, tablet, etc.) to your wireless router.



3. Launch the **Samsung Multiroom** app.
4. Touch **☰** to go to the list of all speakers.
5. Select **More > Add New Speaker** in the app, and then follow the instructions on the app screen.



- ✓ To connect a different network, select **No**. You must enter the password of your wireless router to connect your Soundbar to your wireless network through the Samsung Multiroom app. If your wireless router does not have a designated password, the app completes the initial settings without asking you to enter a password.

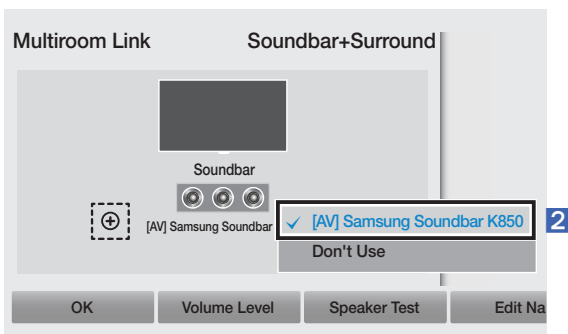
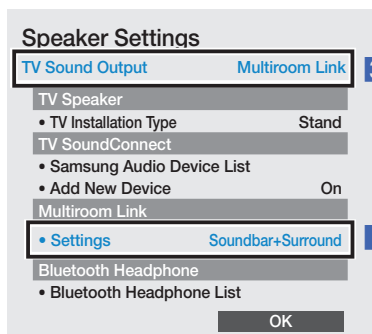
Connecting the Soundbar to your Samsung Smart TV

You can connect your TV to the Soundbar through a wireless network and enjoy the TV sound.

- ✓ **Important: Make sure that the TV and Soundbar are connected to the same network.**
(How to check your Samsung TV network : Home menu → Network → Network Status)

Configuring Settings from your Samsung Smart TV

- ✓ To play sound via the Soundbar, make sure that your TV model supports the Multiroom feature (Samsung Smart TVs released after 2014).
 - ✓ If the TV is disconnected from the wireless network due to a change to the input source of the Soundbar, use the TV menu to re-establish the connection.
- **For TVs released in 2016**
 1. Home menu → Settings (⚙️) → Sound → Sound Output → Select [AV] Samsung Soundbar Kxxx (Wi-Fi)
 2. TV sound is output.
 - **For TVs released in 2015**
 1. Home menu → Sound → Speaker List → Select [AV] Samsung Soundbar Kxxx (Wi-Fi)
 2. TV sound is output.
 - **For TVs released in 2014**
 1. Home menu → Sound → Speaker Settings → Select **Multiroom Link - Settings** → **Soundbar+Surround**
 2. From the Soundbar position, select "K850" and select "OK".
 3. Home menu → Sound → Speaker Settings → Select **TV Sound Output** → **Multiroom Link**

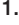



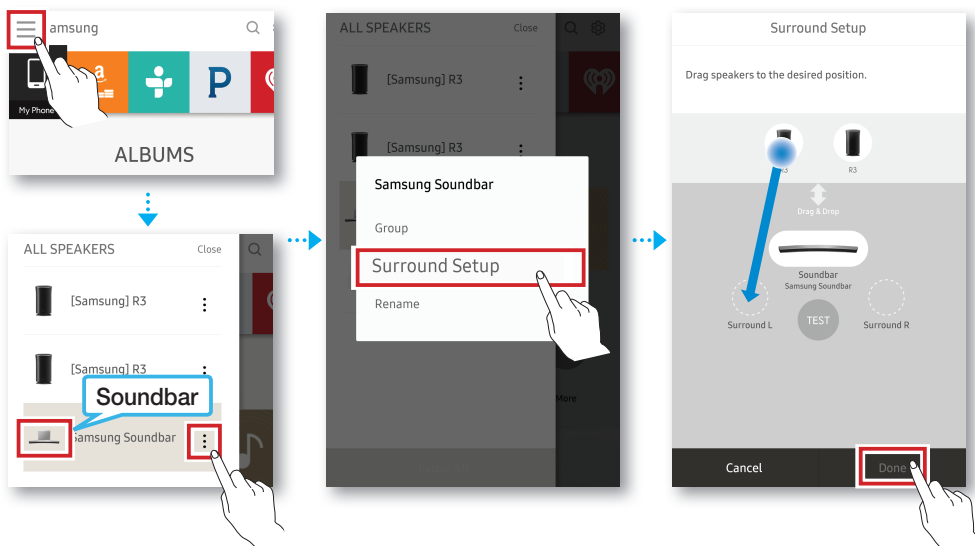
4. TV sound is output.

Connecting Samsung Multiroom Audio System to the Surround

You can enjoy three-dimensional sound in surround mode after connecting two Multiroom Audios and a Soundbar.

✓ Surround connection between a Multiroom Audio and a Soundbar is unavailable.

1. Touch  to go to the list of all speakers.
2. Touch  on the right of the Soundbar model name.
3. Touch **Surround Setup**. Select **Done** after dragging the speaker to the desired location.
4. Surround connection is completed.




✓ Refer to the web manual for connection between the TV and the surround.

CONNECTION VIA BLUETOOTH


You can connect a Bluetooth device to the Soundbar and enjoy music with stereo sound, all without wires!

- ✓ It is not possible to connect multiple Bluetooth devices at the same time.




1. Press the  button on the right side of the Soundbar or the **SOURCE** button on the remote control to select **BT**.
2. Select the Bluetooth menu on the Bluetooth device you want to connect. (Refer to the Bluetooth device's user manual.)
3. Select "[AV] Samsung Soundbar Kxxx" from the list.
 - When the connection is established between the Soundbar and Bluetooth device, the front display window of the Soundbar displays [Bluetooth device name] → **BT**.
4. Play music on the connected device.

[If failed to connect to the Bluetooth device / If device searching is needed again]

- If "[AV] Samsung Soundbar Kxxx" is found in the search results on the Bluetooth device, delete it.
- Press and hold either the  button on the right side of the Soundbar or the **SOURCE** button on the remote control to switch to **BT PAIRING** mode, then select "[AV] Samsung Soundbar Kxxx" from the displayed list of available devices on the Bluetooth device. (Refer to steps 2 and 3 above).
- ✓ If asked for a PIN code when connecting a Bluetooth device, enter <0000>.
- ✓ In Bluetooth connection mode, the Bluetooth connection will be lost if the distance between the Soundbar and the Bluetooth device exceeds 32.8 ft.
- ✓ The Soundbar automatically turns off after 5 minutes in the Ready state.
- ✓ The Soundbar may not perform Bluetooth search or connection correctly under the following circumstances:
 - If there is a strong electrical field around the Soundbar.
 - If several Bluetooth devices are simultaneously paired with the Soundbar.
 - If the Bluetooth device is turned off, not in place, or malfunctions.
- ✓ Electronic devices may cause radio interference. Devices that generate electromagnetic waves must be kept away from the Soundbar main unit - e.g., microwaves, wireless LAN devices, etc.

Disconnecting the Soundbar from the Bluetooth device

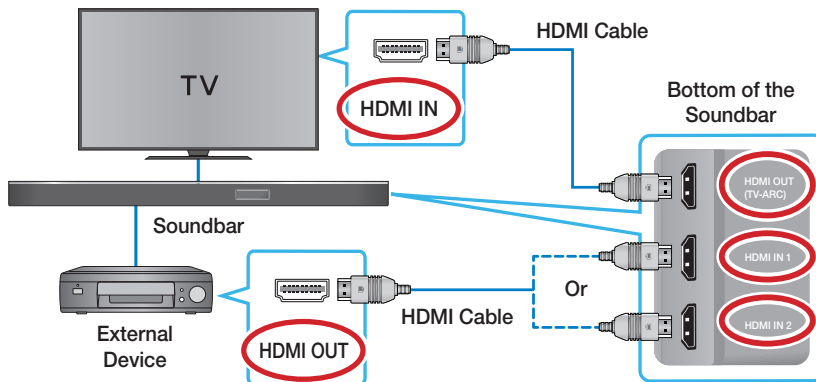
Press the **SOURCE** button on the remote control or the  button on the product's right side to switch from **BT** to another mode or turn off the Soundbar.


- The connected Bluetooth device will wait a certain amount of time for a response from the Soundbar before terminating the connection. (Disconnection time may differ, depending on the Bluetooth device)

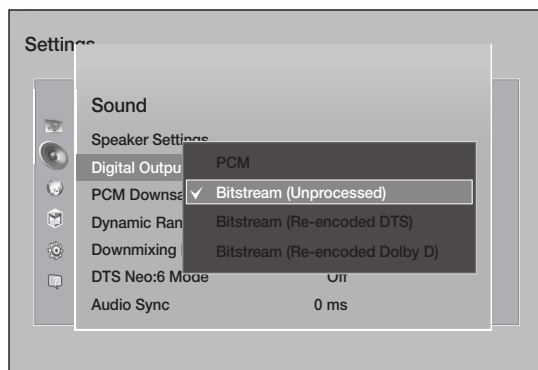
CONNECTING DEVICES IN ORDER TO USE DOLBY ATMOS®

This product supports Dolby Atmos®.

✓ Important: Dolby Atmos® works only in HDMI mode. It is not compatible with other input sources.

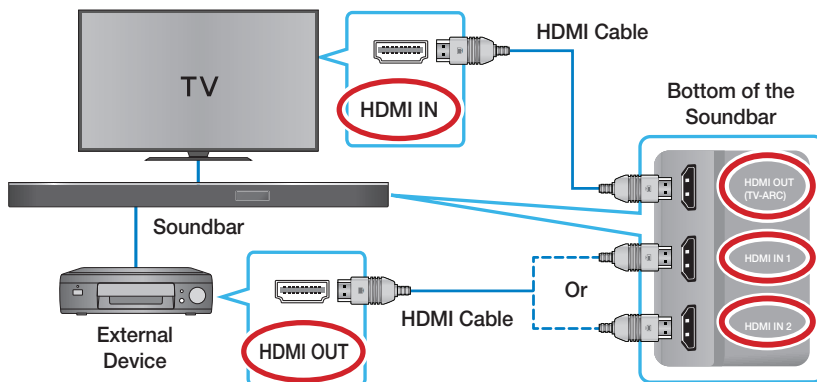



1. Connect an HDMI cable from the **HDMI IN 1** or **HDMI IN 2** jack on the back of the product to the HDMI OUT jack on your digital device. Use the HDMI cable to connect the HDMI IN port on the TV to the **HDMI OUT (TV-ARC)** port on the bottom of the Soundbar.
 2. Press the  button on the right side of the Soundbar or the **SOURCE** button on the remote control to select **HDMI1** or **HDMI2**.
 3. The selected HDMI mode is displayed on the Soundbar display panel and sound plays.
- ✓ When Dolby Atmos® operated, the Blue LED on the right edge of the Soundbar will turn on and glow.
4. **Configuring Dolby Atmos® on your BD player, or other device.**
 - Check the audio output options using the settings menu on your BD player, or other device.
 - Make sure that "No Encoding" is selected for bitstream in the audio output options.
e.g., On a Samsung Player: Home menu → Settings → Sound → Digital Output: Select Bitstream (Unprocessed).



- If the Audio Output options include Secondary Audio, make sure it is set to Off.
- ✓ Dolby Atmos® works only on 3.1.2 channels.
- ✓ Make sure that the content supports Dolby Atmos®.

CONNECTING AN EXTERNAL DEVICE



1. Connect an HDMI cable from the **HDMI IN 1** or **HDMI IN 2** jack on the back of the product to the HDMI OUT jack on your digital device. Use the HDMI cable to connect the HDMI IN port on the TV to the **HDMI OUT (TV-ARC)** port on the bottom of the Soundbar.
2. Press the  button on the right side of the Soundbar or the **SOURCE** button on the remote control to select **HDMI1** or **HDMI2**.
3. The selected HDMI mode is displayed on the Soundbar display panel and sound plays.

SOFTWARE UPDATE

Samsung may offer updates for the Soundbar's system firmware in the future.

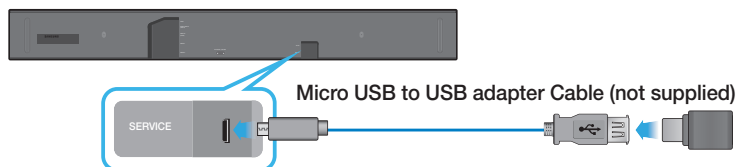
Auto Update

The automatic update function is enabled on the Soundbar by default. Automatic firmware updates are searched for and performed if the Soundbar is connected to the Internet, irrespective of whether it is turned on or off.

- ✓ To use the Auto Update function, the Soundbar must be connected to the Internet.

The Wi-Fi connection to the Soundbar will be terminated if its power cord is disconnected or the power is cut off. If the power is cut off, turn on the Soundbar and reconnect it.

Updating with USB



If an update is offered, you can update the firmware by connecting a USB device with the firmware update stored on it to the USB port on your Soundbar.

For more information about how to download update files, go to the Samsung Electronics website at (samsung.com/sec) → search for the model name → download the firmware from the customer support menu option. The option name can vary.

- ✓ If the input source has been changed after an update or a reconnection of the power cable, change the input source to TV, or the desired source.

INSTALLING THE WALL MOUNT

You can use the wall mount bracket to mount this unit on a wall.

Installation Precautions

- Install on a vertical wall only.
- Do not install the Soundbar system in a location with high temperature and/or humidity. Install the system on a stable wall that can bear the weight of the Soundbar main unit.
- Check the strength of the wall. To install the Soundbar system on a wall that may not bear the Soundbar main unit weight, reinforce the wall before installation. If this is not possible, install the system on another wall, one stable enough to bear the weight of the Soundbar main unit
- Purchase and use the fixing screws or anchors appropriate for the kind of wall you have (plaster board, iron board, wood, etc.). If possible, fix the support screws into wall studs.
- Purchase wall mounting screws according to the type and thickness of the wall you will mount the Soundbar on.
 - Diameter: M5
 - Length: 1 3/8 inches or longer recommended.
- Connect cables from the unit to external devices before you install it on the wall.
- Make sure the unit is turned off and unplugged before you install it. Otherwise, it may cause an electric shock.

Wallmount Components



Bracket-Wall Mount (2 EA)



Holder-Screw (2 EA)

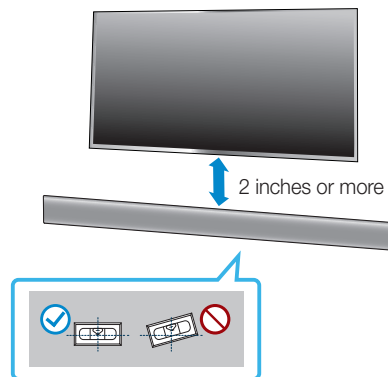


Screw (2EA)



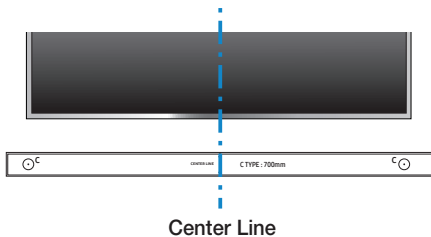
Wall Mount Guide

1. Place the **Wall Mount Guide** against the wall surface.
 - The **Wall Mount Guide** must be level.
 - If your TV is mounted on the wall, install the Soundbar at least 2 inches (5 cm) below the TV.



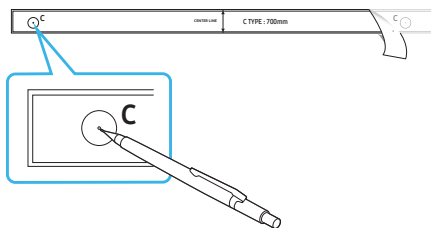
- Align the Paper Template's **Center Line** with the center of your TV (if you are mounting the Soundbar below your TV), and then fix the **Wall Mount Guide** to the wall using tape.

- ✓ If you are not mounting below a TV, place the **Center Line** in the center of the installation area.

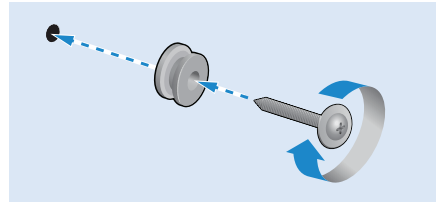


- Push a pen tip or sharpened pencil tip through the center of the **C-TYPE** images on each end of the Guide to mark the holes for the supporting screws, and then remove the **Wall Mount Guide**.
- Using an appropriately sized drill bit, drill a hole in the wall at each marking.

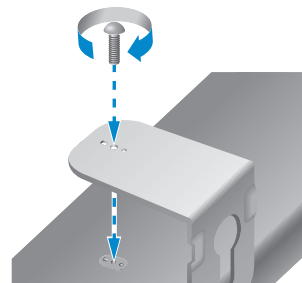
- ✓ If the markings do not correspond to the positions of studs, make sure you insert appropriate anchors or mollys into the holes before you insert the support screws. If you use anchors or mollys, make sure the holes you drill are large enough for the anchors or mollys you use.



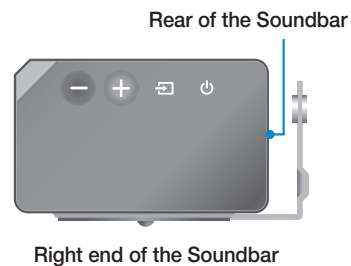
- Push a screw (not supplied) through each **Holder-Screw**, and then screw each screw firmly into a support screw hole.



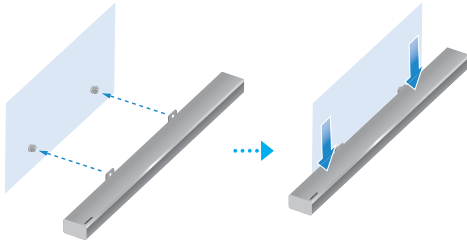
- Install 2 **Bracket-Wall Mounts** in the right orientation on the bottom of the Soundbar, using 2 **Screws** (M4 x L12).



- When assembling, make sure the hanger parts of the **Bracket-Wall Mounts** are located behind the rear of the Soundbar. See the illustration below.



7. Install the Soundbar with the attached **Bracket-Wall Mounts** by hanging the **Bracket-Wall Mounts** on the **Holder-Screws** on the wall.

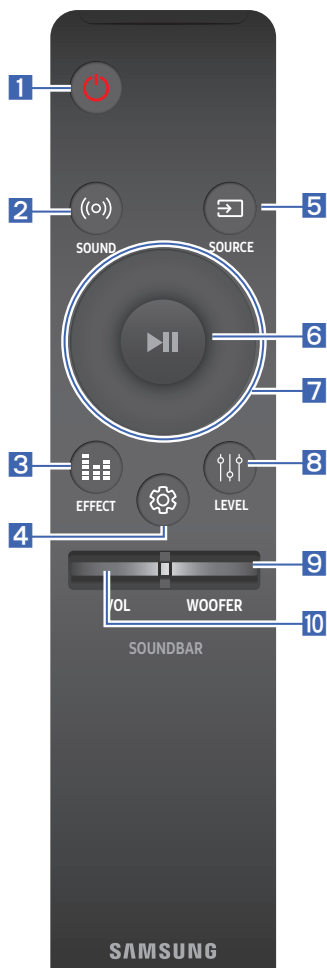


8. Slide the Soundbar down as shown below so that the **Bracket-Wall Mounts** rest securely on the **Holder-Screws**.

- ✓ Slide the **Bracket-Wall Mounts** down from the bottom to install it onto the **Holder-Screws**.

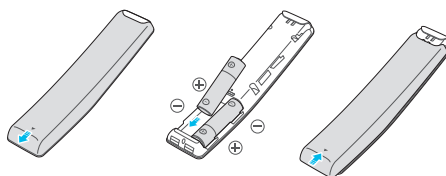


REMOTE CONTROL BUTTONS & FEATURES





Inserting Batteries before using the Remote Control (AA batteries X 2)






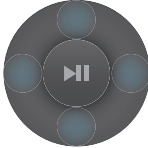
Slide the battery cover in the direction of the arrow until it is completely removed. Insert 2 AA batteries (1.5V) in the correct +/- polarity. Slide the battery cover back into position.



Controlling the Volume of Soundbar by using Your TV Remote Control

1. Press and hold the ((o)) **SOUND** button for more than 5 seconds while the Soundbar is turned on.
 2. "ON - TV REMOTE" appears on the Soundbar's display.
 3. In the TV's menu, set the TV speaker to external speaker.
- ✓ Not available in **TV ARC**, **BT**, **HDMI1** and **HDMI2** modes. (Available only in **D.IN** (optical) and **AUX** modes)
 - ✓ On the TV remote control, only the volume and mute buttons are available. Other buttons are disabled.
 - ✓ TV menus differ by manufacturer and model. Refer to the TV's user manual for further information.
 - ✓ Manufacturers supporting this function:
 - VIZIO, LG, Sony, Sharp, PHILIPS, PANASONIC, TOSHIBA, GRUNDIG, Hisense, RCA
 - This function may not be compatible with your TV's remote depending on the remote control's manufacturer.
 - ✓ To turn off this function, press the ((o)) **SOUND** button for 5 seconds. "OFF - TV REMOTE" appears on the Soundbar's display.

1	 Power	Turns the Soundbar on and off.
2	 SOUND	Turns Surround Sound on and off. The Surround Sound function adds depth and a sense of space to sound. Each time you press this button, ON and OFF alternate. <ul style="list-style-type: none"> • ON: Play sound over all the speakers. <ul style="list-style-type: none"> ✓ You can also hear 3.1.2 channel sound for music sources that are not Dolby Atmos®. • OFF: Play sound through the original source channel.

<p>3</p>  <p>EFFECT</p>	<p>You can select from 6 sound modes: STANDARD, MUSIC, CLEAR VOICE, SPORTS, MOVIE, and NIGHT.</p> <ul style="list-style-type: none"> ✓ NIGHT mode When changing a channel or music source, the volume difference between different music input sources is automatically adjusted to be suitable for listening. ✓ DRC (Dynamic Range Control) Lets you apply dynamic range control to Dolby Digital tracks. Press and hold the EFFECT button for about 5 seconds in standby mode to toggle the DRC (Dynamic Range Control) function ON - DRC and OFF - DRC.
<p>4</p>  <p>Sound control</p>	<p>You can select from TREBLE, BASS, or AUDIO SYNC.</p> <ul style="list-style-type: none"> • To control the volume of the treble or bass sound, select TREBLE or BASS in Sound Settings, and then adjust the volume between -3~+3 by using the Up/Down buttons. • If the video and audio between the TV and your Soundbar are not synchronized, select AUDIO SYNC in Sound Settings, and then set audio delay between 0~300 milliseconds by using the Up/Down buttons. <p>✓ Audio Sync is only supported in some functions.</p>
<p>5</p>  <p>SOURCE</p>	<p>Press to select a source connected to the Soundbar.</p> <ul style="list-style-type: none"> ✓ BT PAIRING mode To turn on BT PAIRING mode in Bluetooth function, press and hold the SOURCE button for more than 5 seconds.
<p>6</p>  <p>Play/Pause (BT/WIFI)</p>	<p>Press the ▶ button to pause a music temporarily. Press the ▶ button again to play the selected music.</p>
<p>7</p>  <p>Up/Down/ Left/Right</p>	 <p>Press the indicated areas to select Up/Down/Left/Right.</p> <p>Press Up/Down/Left/Right on the button to select or set functions.</p> <ul style="list-style-type: none"> ✓ Music Skip Press the Right button to select the next music; press the Left button to select the previous music. ✓ Anynet+ / Auto Power Link You can turn the Anynet+ and Auto Power Link on or off. The Anynet+ and Auto Power Link are controlled by the Right and Left buttons respectively. <ul style="list-style-type: none"> • Anynet+: If connected through an HDMI cable, you can control your Soundbar with a Samsung TV remote control. Press and hold the Right button for 5 seconds to toggle Anynet+ ON and OFF. • Auto Power Link: If connected through a digital optical cable, the Soundbar can automatically turn on when you turn on your TV. Press and hold the Left button for 5 seconds to toggle Auto Power Link ON and OFF.

8



LEVEL



Soundbar Main Unit

The ATMOS Soundbar has 3.1.2 channel sound. Use this button to adjust the volume of each of the speakers. Press this button, use the **Left/Right** buttons to select a speaker, and then use the **Up/Down** buttons to increase or decrease the level (volume).

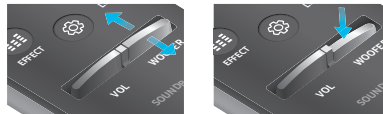
Speaker	Displayed on OLED when adjusting the level
Front Left	FL
Front Top Left	FTL
Center	C
Front Right	FR
Front Top Right	FTR

✓ See the description under item 9 for instructions on how to adjust the subwoofer level (volume).

9



WOOFER



Push the button up or down to adjust the volume of the subwoofer to -12 or -6 to +6. Pressing the button reverts the subwoofer volume to level 0.

10



VOL



Push the button up or down to adjust the volume.

✓ **Mute**

Press the **VOL** button to mute the sound. Press it again to unmute the sound.

TROUBLESHOOTING

Before seeking assistance, check the following.

The unit will not turn on.

Is the power cord plugged into the outlet?

⇒ Connect the power plug to the outlet.

A function does not work when the button is pressed.

Is there static electricity in the air?

⇒ Disconnect the power plug and connect it again.

Sound is not produced.

Is the Mute function on?

⇒ Press the **VOL** button to cancel the function.

Is the volume set to minimum?

⇒ Adjust the Volume.

The remote control does not work.

Are the batteries drained?

⇒ Replace with new batteries.

Is the distance between the remote control and Soundbar main unit too far?

⇒ Move the remote control closer to the Soundbar main unit.

The red LED on the subwoofer blinks and the subwoofer is not producing sound.

This issue can occur if the subwoofer is not connected to the Soundbar main unit.

⇒ Try to connect your subwoofer again.
See page 5.

The subwoofer drones and vibrates noticeably.

Try to adjust the vibration of your subwoofer.

⇒ Push the **WOOFER** button on your remote control up or down to adjust its value (between -12, -6 ~ +6).

LICENSE



Manufactured under license from Dolby Laboratories. Dolby, Dolby Atmos, Dolby Audio, Dolby Digital Plus, Pro Logic, and the double-D symbol are trademarks of Dolby Laboratories.



For DTS patents, see <http://patents.dts.com>.
Manufactured under license from DTS Licensing Limited. DTS, the Symbol, DTS in combination with the Symbol, and DTS Digital Surround are registered trademarks or trademarks of DTS, Inc. in the United States and/or other countries. © DTS, Inc. All Rights Reserved.



The terms HDMI and HDMI High-Definition Multimedia Interface, and the HDMI Logo are trademarks or registered trademarks of HDMI Licensing LLC in the United States and other countries.



- The Spotify Software is subject to third party licenses found here : www.spotify.com/connect/third-party-licenses.
 - For more information about Spotify Connect, please visit www.spotify.com/connect
-

OPEN SOURCE LICENSE NOTICE

For further information on Open Sources used in this product, please visit the website:
<http://opensource.samsung.com>

IMPORTANT NOTE ABOUT SERVICE

- Figures and illustrations in this User Manual are provided for reference only and may differ from actual product appearance.
- An administration fee may be charged if either:
 - a. An engineer is called out to your home at your request and there is no defect in the product.
 - b. You bring the unit to a repair center and there is no defect in the product.
- You will be advised of the amount of the administration fee before any work is done or a home visit is made.
- If you have a problem with this product, we strongly recommend you read the appropriate section of this manual, visit the Support page for your product at www.samsung.com, or call Samsung Product Support (1-800-726-7864) to find an answer before you contact a service center for a repair.

SPECIFICATIONS

GENERAL	Weight	Soundbar Main Unit	14.8 lbs (6.7 kg)	
		Subwoofer (PS-KW1-3)	21.2 lbs (9.6 kg)	
	Dimensions (W x H x D)	Soundbar Main Unit	47.6 x 3.2 x 5.2 inches (1210.2 x 81.7 x 131.4 mm)	
		Subwoofer (PS-KW1-3)	8.0 x 15.7 x 16.3 inches (203.9 x 399.0 x 414.3 mm)	
	Operating Temperature Range		+41°F to +95°F (+5°C to +35°C)	
	Operating Humidity Range		10 % to 75 %	
HDMI	Video	1080p, 1080i, 720p, 576p, 480p 2160p@24/25/30Hz 4:4:4 2160p@60/50Hz 4:2:0		
AMPLIFIER	Rated Output Power	Soundbar Main Unit	18W x 11, 4 ohm, THD≤10%	
		Subwoofer (PS-KW1-3)	162W, 3 ohm, THD≤10%	
Supported play formats			LPCM 2ch, Dolby Digital, Dolby Atmos (True HD/Digital Plus), DTS	

- Nominal specification
 - Samsung Electronics Co., Ltd reserves the right to change the specifications without notice.
 - Weight and dimensions are approximate.
 - For more information about the power supply and power consumption, refer to the label attached to the product. (Label : Bottom of the Soundbar main unit)
 - Dispose unwanted electronics through an approved recycler.
To find the nearest recycling location, go to our website: www.samsung.com/recyclingdirect or call (877) 278 - 0799

Precaution : The product will restart automatically if you turn on/off Wi-Fi/Ethernet.

Wi-Fi/Ethernet	Port deactivation method	Press Wi-Fi SETUP button on the product for 30 seconds to turn Wi-Fi/Ethernet On / Off.
Bluetooth	Port deactivation method	Press SPK ADD button on the product for 30 seconds to turn Bluetooth On / Off.

LIMITED WARRANTY TO ORIGINAL PURCHASER

This SAMSUNG brand product, as supplied and distributed by SAMSUNG and delivered new, in the original carton to the original consumer purchaser, is warranted by SAMSUNG against manufacturing defects in materials and workmanship for a limited warranty period of:

One (1) Year Parts and Labor* **(*90 Days Parts and Labor for Commercial Use)**

This limited warranty begins on the original date of purchase, and is valid only on products purchased and used in the United States. To receive warranty service, the purchaser must contact SAMSUNG for problem determination and service procedures. Warranty service can only be performed by a SAMSUNG authorized service center. The original dated bill of sale must be presented upon request as proof of purchase to SAMSUNG or SAMSUNG's authorized service center. Transportation of the product to and from the service center is the responsibility of the purchaser.

SAMSUNG will repair or replace this product, at our option and at no charge as stipulated herein, with new or reconditioned parts or products if found to be defective during the limited warranty period specified above. All replaced parts and products become the property of SAMSUNG and must be returned to SAMSUNG. Replacement parts and products assume the remaining original warranty, or ninety (90) days, whichever is longer.

SAMSUNG's obligations with respect to software products distributed by SAMSUNG under the SAMSUNG brand name are set forth in the applicable end user license agreement. Non-SAMSUNG hardware and software products, if provided, are on an "AS IS" basis.

Non-SAMSUNG manufacturers, suppliers, publishers, and service providers may provide their own warranties.

This limited warranty covers manufacturing defects in materials and workmanship encountered in normal, and except to the extent otherwise expressly provided for in this statement, noncommercial use of this product, and shall not apply to the following, including, but not limited to: damage which occurs in shipment; delivery and installation; applications and uses for which this product was not intended; altered product or serial numbers; cosmetic damage or exterior finish; accidents, abuse, neglect, fire, water, lightning or other acts of nature; use of products, equipment, systems, utilities, services, parts, supplies, accessories, applications, installations, repairs, external wiring or connectors not supplied and authorized by SAMSUNG, or which damage this product or result in service problems; incorrect electrical line voltage, fluctuations and surges; customer adjustments and failure to follow operating instructions, cleaning, maintenance and environmental instructions that are covered and prescribed in the instruction book; product removal or reinstallation; reception problems and distortion related to noise, echo, interference or other signal transmission and delivery problems. SAMSUNG does not warrant uninterrupted or error-free operation of the product.

THERE ARE NO EXPRESS WARRANTIES OTHER THAN THOSE LISTED AND DESCRIBED ABOVE, AND NO WARRANTIES WHETHER EXPRESS OR IMPLIED, INCLUDING, BUT NOT LIMITED TO, ANY IMPLIED WARRANTIES OF MERCHANTABILITY OR FITNESS FOR A PARTICULAR PURPOSE, SHALL APPLY AFTER THE EXPRESS WARRANTY PERIODS STATED ABOVE, AND NO OTHER EXPRESS WARRANTY OR GUARANTY GIVEN BY ANY PERSON, FIRM OR CORPORATION WITH RESPECT TO THIS PRODUCT SHALL BE BINDING ON SAMSUNG. SAMSUNG SHALL NOT BE LIABLE FOR LOSS OF REVENUE OR PROFITS, FAILURE TO REALIZE SAVINGS OR OTHER BENEFITS, OR ANY OTHER SPECIAL, INCIDENTAL OR CONSEQUENTIAL DAMAGES CAUSED BY THE USE, MISUSE OR INABILITY TO USE THIS PRODUCT, REGARDLESS OF THE LEGAL THEORY ON WHICH THE CLAIM IS BASED, AND EVEN IF SAMSUNG HAS BEEN ADVISED OF THE POSSIBILITY OF SUCH DAMAGES. NOR SHALL RECOVERY OF ANY KIND AGAINST SAMSUNG BE GREATER IN AMOUNT THAN THE PURCHASE PRICE OF THE PRODUCT SOLD BY SAMSUNG AND CAUSING THE ALLEGED DAMAGE. WITHOUT LIMITING THE FOREGOING, PURCHASER ASSUMES ALL RISK AND LIABILITY FOR LOSS, DAMAGE OR INJURY TO PURCHASER AND PURCHASER'S PROPERTY AND TO OTHERS AND THEIR PROPERTY ARISING OUT OF THE USE, MISUSE OR INABILITY TO USE THIS PRODUCT SOLD BY SAMSUNG NOT CAUSED DIRECTLY BY THE NEGLIGENCE OF SAMSUNG. THIS LIMITED WARRANTY SHALL NOT EXTEND TO ANYONE OTHER THAN THE ORIGINAL PURCHASER OF THIS PRODUCT, IS NONTRANSFERABLE AND STATES YOUR EXCLUSIVE REMEDY.

Some states do not allow limitations on how long an implied warranty lasts, or the exclusion or limitation of incidental or consequential damages, so the above limitations or exclusions may not apply to you. This warranty gives you specific legal rights, and you may also have other rights which vary from state to state.

To obtain warranty service, please contact SAMSUNG customer care center.

The benefits of this Limited Warranty extend only to the original purchaser of Samsung products from an authorized Samsung reseller. THIS LIMITED WARRANTY SHALL NOT APPLY TO ANY SAMSUNG PRODUCTS PURCHASED FROM UNAUTHORIZED RESELLERS OR RETAILERS, EXCEPT IN STATES WHERE SUCH RESTRICTION MAY BE PROHIBITED. For a list of Samsung authorized retailers, please go to: http://www.samsung.com/us/peaceofmind/authorized_resellers.html.

SAMSUNG

The party responsible for product compliance:
Samsung Electronics Co., LTD.
America QA lab of Samsung
19 Chapin Rd. Building D,
Pine Brook, New Jersey 07058

Questions or Comments?

COUNTRY	CALL	OR VISIT US ONLINE AT	WRITE
IN THE US	1-800-SAMSUNG (726-7864)	www.samsung.com/us/support	Samsung Electronics America, Inc. 85 Challenger Road Ridgefield Park, NJ 07660

© 2016 Samsung Electronics Co., Ltd. All rights reserved.



AH68-02917Q-04



AH68-02917Q-04