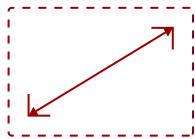


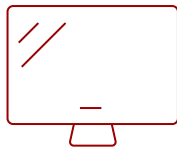
VG3456 - 34" 1440P ERGONOMIC 21:9 DOCKING MONITOR WITH USB C AND RJ45

Key Features

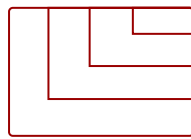
- 34 Inch ultrawide 21:9 WQHD (3440x1440p) IPS monitor with 60Hz refresh rate
- Ethernet RJ45 and USB-C connectivity for fast data, audio and video transfer, 90W charging over one cable
- Advanced ergonomics (40-degree tilt, swivel, rotate and height) for all-day comfort
- Flicker-Free technology and Blue Light Filter for reduced eye fatigue
- Easy-to-install quick release stand with carrying handle and client mount
- The VG3456 supports PC, Mac and more with USB-C, RJ45, HDMI, DisplayPort, USB inputs



34
DISPLAY



MVA
PANEL



3440 x 1440
RESOLUTION



Product Description

Featuring an ultra-wide 34" screen with a design to boost productivity and maximize output, the ViewSonic® VG3456 is a docking monitor that transforms your desktop into a streamlined and efficient workspace. With WQHD 3440 x 1440 resolution, the VG3456 delivers 2.4 times more pixels than standard Full HD monitors, giving users more detail for enhanced productivity. A 21:9 aspect ratio and slim bezels provide extra screen real estate so users can display more content, switch between applications more quickly, view documents side by side, and view multiple windows at once. Enjoy reliable and flexible network connectivity with the integrated gigabit Ethernet port while the latest USB Type-C connectivity provides up to 90W power delivery to your laptop. That's not all, the integrated USB hub also provides single-cable simplicity for connecting and charging your peripherals and accessories. In addition, the included vDisplayManager software gives you quick and easy OSD control, as well as customized screen templates for easy multi-tasking. This monitor is also shipped in eco-friendly biodegradable packaging, along with an easy-to-install quick release stand that makes for quick deployment and a lower total cost of ownership.

Specifications

More Information	
Screen Size	34
Viewable Area (in.)	34
Panel Type	MVA
Display Resolution	3440 x 1440
Display Resolution	WQHD (3440x1440)
Static Contrast Ratio	3,000:1
Dynamic Contrast Ratio	50,000,000:1
Brightness	300 cd/m2
Colors	1.07B
Color Space Support	10 bits
Aspect Ratio	21:9
Response Time (Typical GTG)	25ms
Response Time (GTG w/OD)	5ms
Viewing Angles	178º horizontal, 178º vertical
Backlight Life (Hours)	40,000
Panel Surface	Anti-glare, Hard coating (3H)
PC Resolution (max)	3440 x 1440
Mac® Resolution (max)	3440 x 1440
USB 2.0 Type A	2
USB 2.0 Type B	1
USB 3.1 Type C	1
Ethernet LAN (RJ45)	1
HDMI 1.4 In	2
DisplayPort	1
Internal Speakers	3W (x2)
Eco Mode (Conserve)	36W
Eco Mode (optimized)	38W
Consumption (typical)	41W
Consumption (max)	160W
Voltage	100-240 VAC, 50-60Hz
Stand-by	0.3W
Power Supply	Internal
Cable Organization	No

Kensington Lock Slot	1
Physical Controls	Key 1 (eye), Key 2, Key 3, Key 4, Key 5, Key 6 (power)
On Screen Display	Input Select, Audio Adjust, ViewMode, Color Adjust, Manual Image Adjust, Setup Menu
Temperature	32-104° F (0 - 40° C)
Humidity (non-condensing)	20-90%
VESA Compatible	100 x 100 mm
Frequency Horizontal	15 ~ 150 KHz
Frequency Vertical	24 ~ 100 Hz
Height Adjust	130 mm / 5.1 in
Swivel	60°
Tilt (Forward/Back)	5° / 20°
Net (lbs)	19.4
Net Without Stand (lbs)	13.5
Gross (lbs)	29.5
Net (kg)	8.8
Net Without Stand (kg)	6.1
Gross (kg)	13.4
Packaging (in.)	37.2 x 9.2 x 20.7
Physical (in.)	32.5 x 16.1~21.2 x 9.3
Physical Without Stand (in.)	32.5 x 14.4 x 2.0
Packaging (mm)	945.0 x 234.0 x 525.0
Physical (mm)	825.0 x 407.8~537.8 x 236.0
Physical Without Stand (mm)	825.0 x 366.0 x 51.0
Regulations	cTUVus, FCC-B, ICES003, Energy Star Certified, EPEAT Certified, CEC, MX-CoC, Mexico Energy
PACKAGE CONTENTS	VG3456, Power Cable, HDMI cable, USB Type C cable, USB A/B Cable, Quick Start Guide
Recycle/Disposal	Please dispose of in accordance with local, state or federal laws.



Contact Sales
[ViewSonic.com](https://www.viewsonic.com)
888.881.8781 📞
email:
salesinfo@viewsonic.com