

KEFEYA S1 USER GUIDE



KEYEYA LAPTOP SCREEN EXTENDER

Warm tips:

1. Please ensure type-c data wire is connected well with device interface.
2. This product supports whole function of type-c (charging and video), integrated one line. If screen cannot be powered on or restarted, please supply external power of 5V, 2A.
3. The TYPE-C to DP/HDMI interface used to connect the product must use the HDMI TO TYPE-C data cable included in the product packaging and be externally powered.

Windows

Mac

Android

Product Introduction

S1 is a plug-and-play, versatile external, portable folding single-screen laptop splitter. It allows for the quick setup of a personal mobile workstation. It provides a perfect solution for laptop users to have multi-screen mirroring or extended display, significantly boosting work efficiency by up to 200% and enabling efficient multitasking. Additionally, it supports screen mirroring on select smartphones such as Samsung and Huawei, as well as the use of the smartphone's built-in desktop mode and audio-video transmission capabilities.

The S1 product stand is designed for easy use. It can be clipped onto the top of the laptop screen, providing a secure and non-slip attachment. It supports laptop shells ranging from 13 inches to 17.3 inches, catering to professionals, white-collar workers, gamers, stock traders, entrepreneurs, programmers, and students, offering them a unique and enjoyable experience.

Each screen of S1 allows adjustment of brightness, sound, contrast and other parameters independently, and is equipped with MINI HDMI/Type-C interface, saving the need of any docking stations. As long as it is a signal + power supply two-in-one TYPE-C laptop, connected display can be realized with one cable. The desktop host/laptop /miniPC/ set-top box/game console and other devices with HDMI output interface can be directly connected to the display, but the screen needs external power supply to light up (Type-C mobile phone charging cable can be used).

Finally, S1 screen splitter can provide a complete 180 degree rotation on a single screen. You can choose your best view angle for the optimum visual experience.

Contents Of Instruction

Product Attributes

1. Product host	1
2. Accessories	1
3. Parameters	1

Installation and Storage

1. Installation and Storage	2
2. Stretch the frame	2
3. Adjust the kickstand	2
4. Expanded Direction	3
5. Storing your monitor	3

Key Definition	3
----------------------	---

Connection

1. Connect S1 with Laptop	4
2. Connect S1 with mobile phone and other device	5

Audio Settings

1. Change sound settings of Windows 10 / Windows 11	6
2. Change sound settings of MAC OS PC	7

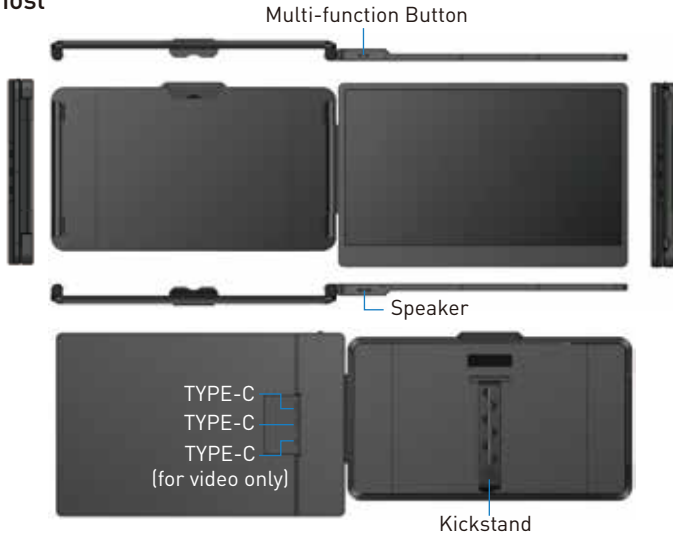
Display Mode

1. Windows 10 / Windows 11 Display Settings and Configuration	8
2. MacOS 13 Ventura Display Settings and Configuration	9

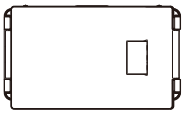
Transportation, Storage and Safety Information	10
--	----

Product Attributes

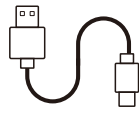
1. Product host



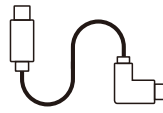
2. Accessories



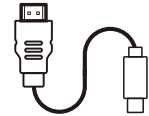
HOST



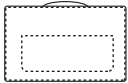
USB-A to USB-C



USB-C to USB-C



HDMI to TYPE-C



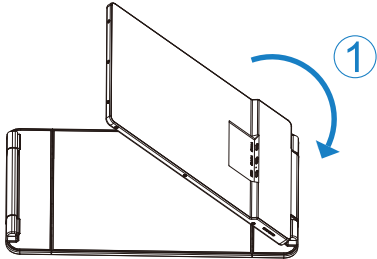
BAG

3. Parameters

Weight:	1.06 Kg	Screen Size:	14 Inches
Aspect Ratio:	16:9	Panel Type:	IPS Wide Viewing Angle
Size:	353x207x23mm	Average Brightness:	300CD/M ²
Refresh Rate:	60hz	Type-C Input:	5V-20V / 5A Max
Resolution:	1920x1080 P	Type-C Output:	5V-20V / 4.25A Max
Speaker:	1	Ports:	Type-C x3

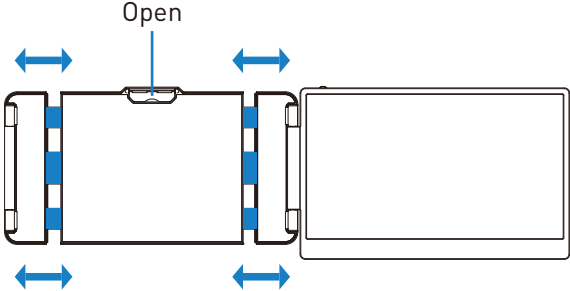
Installation and Storage

1. Expand the monitor

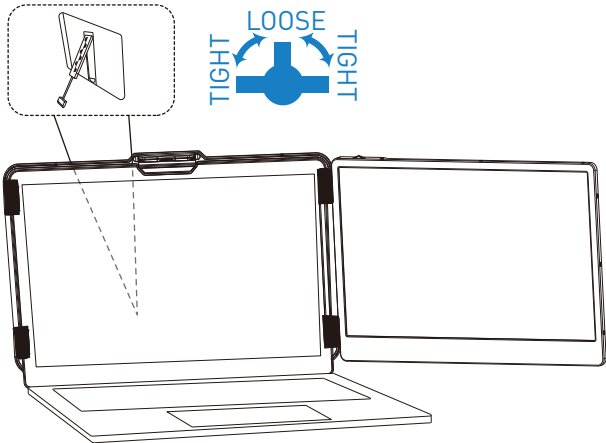


*NOTE: Please follow the direction to expand the monitor to avoid damage.

2. Stretch the frame

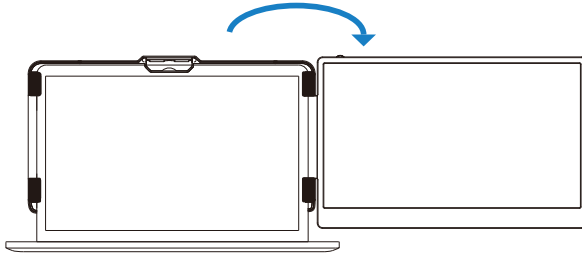


3. Adjust the kickstand



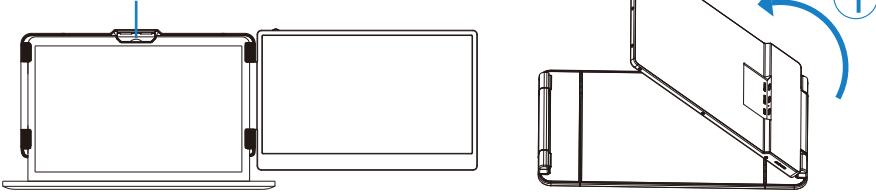
Installation and Storage

4. Expanded Direction



5. Closing Sequence

Fold the top buckle



*NOTE: Please follow the sequence of opening and closing to avoid damage.



When folding the screen, be sure to pull out the bracket to the proper size as shown in the picture to secure the screen in the silicone of the bracket. Otherwise, forcing it closed will damage the screen!

Key Definitions

Menu/Selection/Confirmation Button

Press and hold for 2 seconds to return. Press and hold for 3 seconds to shut down



Toggle Left "Minus"
Backlight Adjustment Button

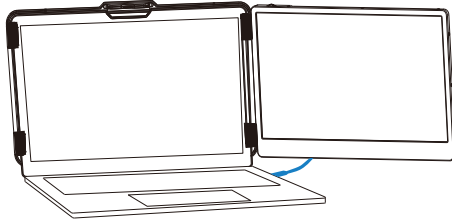
Toggle Right "Plus"
Volume Adjustment Button



How to Connect

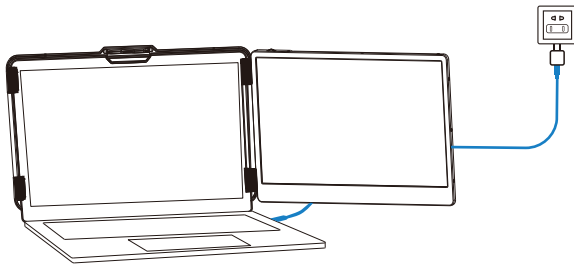
1. Connect S1 with Laptop

It requires 1 full-featured USB-C port or 1 HDMI port plus 1 USB-A port on your laptop.

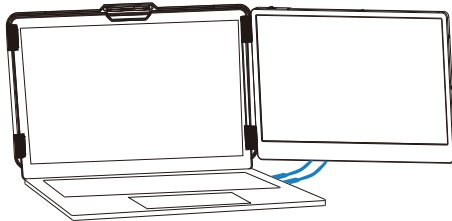


TYPE-C Connection :

If your laptop has a full-featured Type-C port, you can connect the S1 directly to your laptop with one Type-C cable.



Notice: If the display has no signal or the signal is unstable after connection, please connect an external 5V/2A power adapter to power the laptop.

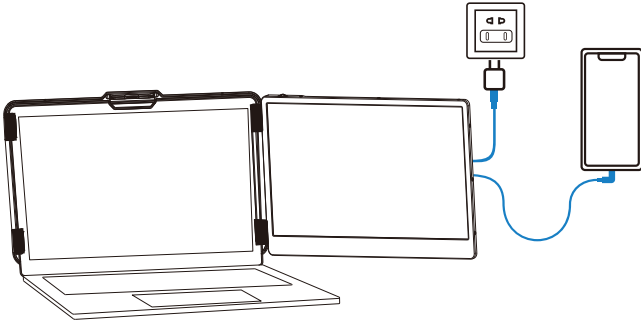


HDMI & USB-A Connection:

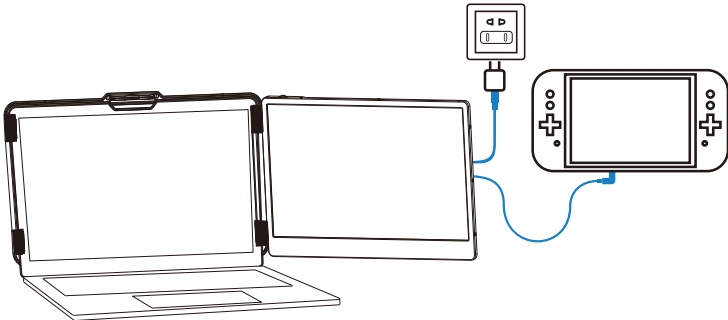
If your laptop has USB-A and one HDMI port, please use the USB-A to USB-C cable and HDMI to Type-C cable to connect the S1.

Connection Mode

2. Connect S1 with Mobile Phone and Other Devices



Mobile phone
(External power supply required)



Switch
(External power supply required)

Audio Settings

1. Change sound settings of Windows 10 / Windows 11

1.1 Right click the Loudspeaker icon located in the bottom-right corner .

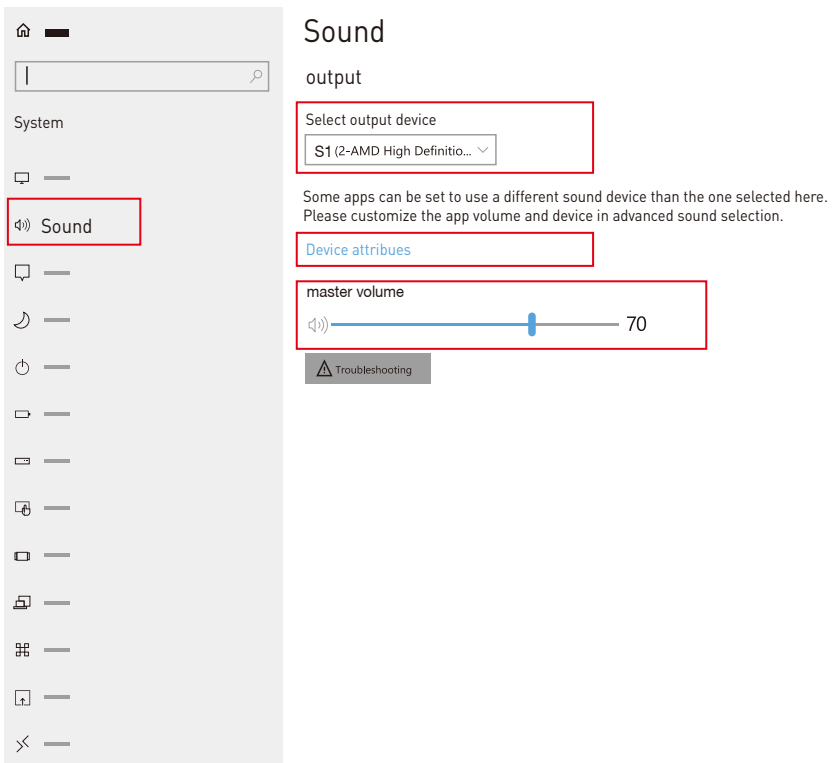


1.2 Select "switch on sound " in pop-up dialog box

1.3 Left click "turn on sound settings" and pop-up the box as provided,Here users can set about sound;

Here users can set about sound

1. Master volume;
2. Select output device: { S1 / Speaker };
3. Device attributes.



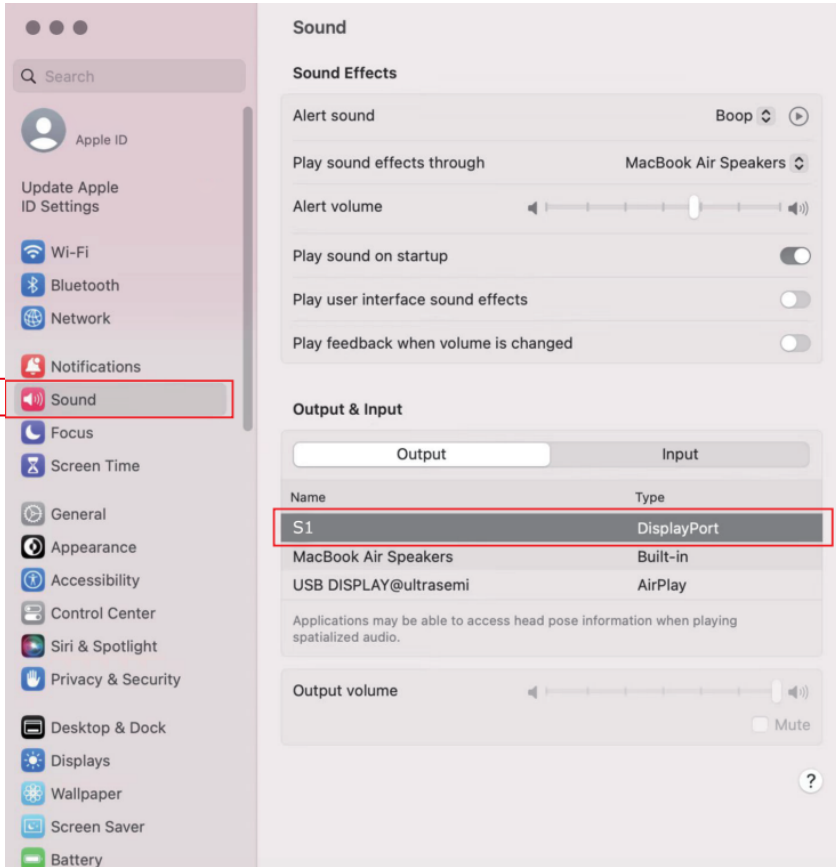
Audio Settings

2. Change sound settings of MAC OS PC

2.1. Choose Apple menu > System Settings



2.2. Click on "Output," and then choose the desired device from the list of available sound output options.
output devices: [S1 / Speaker]

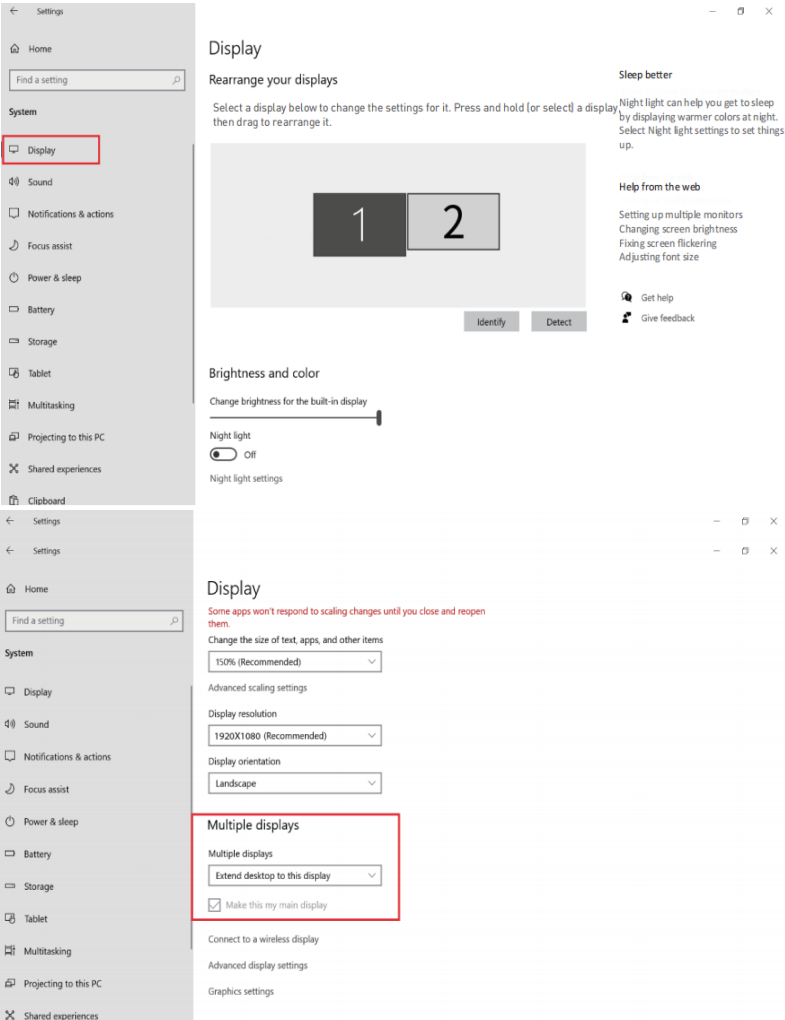


Display Mode

1. Windows 10 / Windows 11 Display Settings

1.1 Right-click a blank area of the desktop. Select 'Display Settings' from the pop-up dialogue box.

Left-click "Display Settings" to open the settings dialogue box, as shown.



1.2 Under the "Rearrange yours displays" section, drag and drop each display to rearrange them according to their physical layout of your desktop. Scroll down to the bottom of the page to further configure the display for extended or mirrored mode.

Display Mode

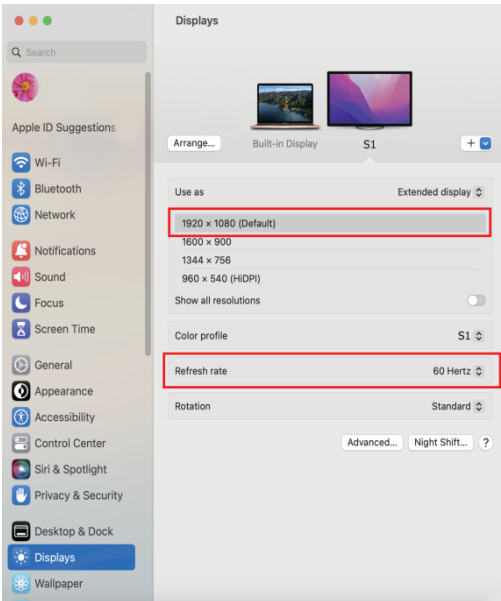
2. MacOS 13 Ventura Display Settings

2.1 Enter the "System Preferences" menu



2.2 Configure your monitor

In this menu, you can set the resolution and mirror//extend the display you want.



2.3 Arrange Displays

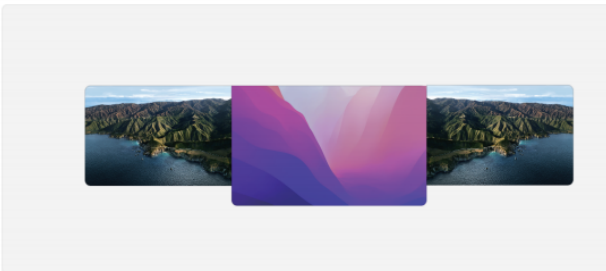
To rearrange displays, drag them to the desired position.

To mirror displays, hold Option key while dragging them on top of each other.

To relocate the menu bar, drag it to a different display.

Arrange Displays

To rearrange displays, drag them to the desired position. To mirror displays, hold Option while dragging them on top of each other. To relocate the menu bar, drag it to a different display.

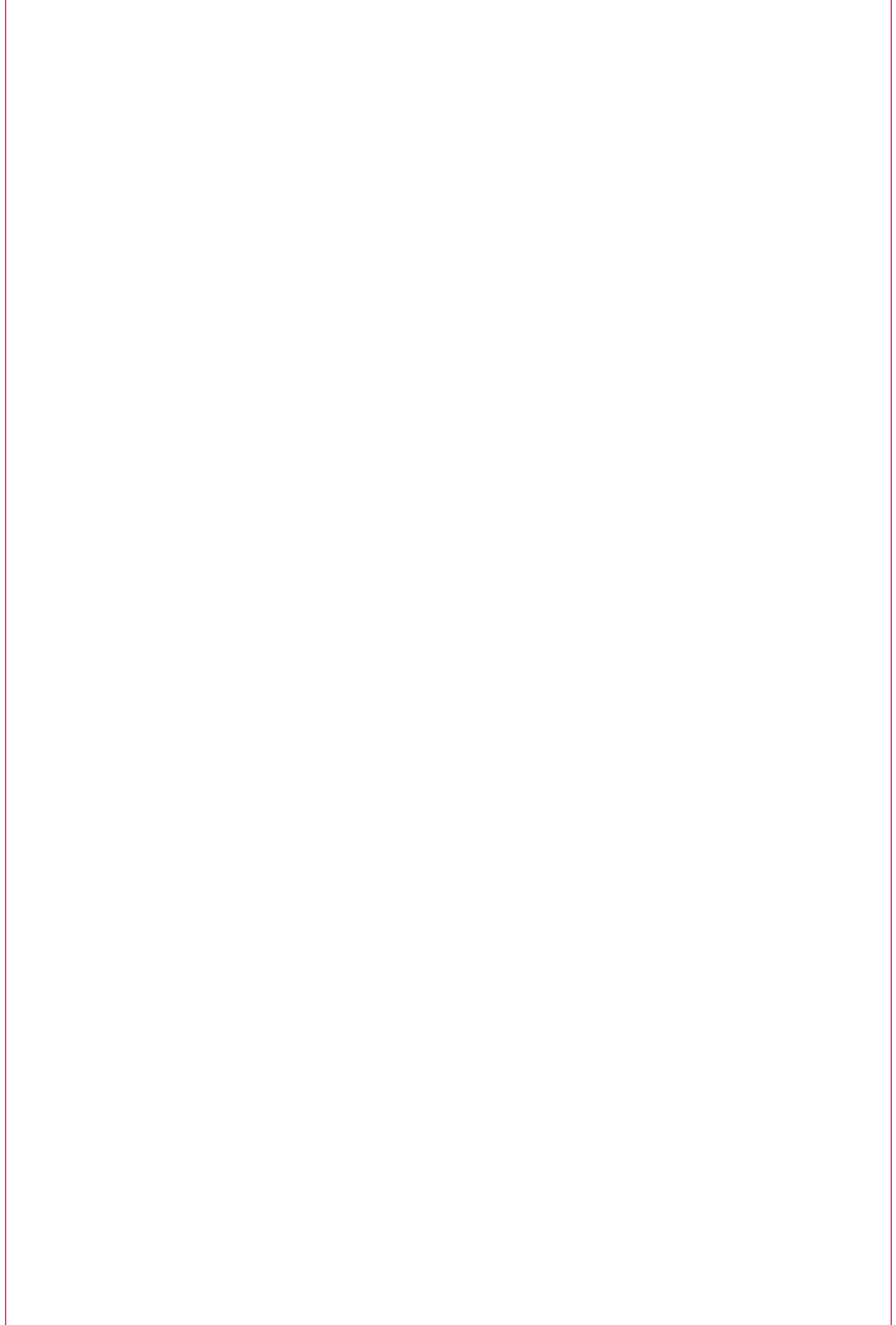


Done

Transportation, Storage And Safety Information

To ensure the safe and proper use of this product and to prevent potential accidents such as electric shock or fire, please carefully read and understand all usage requirements and operational procedures before using. Adhere strictly to the following guidelines:

1. Before use, remove the protective film from the screen surface.
2. This product requires a DC power supply through an AC/DC power adapter. Ensure that the adapter is placed away from heat sources in a well-ventilated location. The AC power socket and AC power line should be adequately grounded to handle the current demands.
3. The DC power input required for this product is $5V-20V \pm 2V$.
4. Take precautions to prevent excessive humidity and dust accumulation, as they can lead to circuit corrosion and malfunction.
5. Avoid subjecting the screen surface to external forces or impacts.
6. Do not use sharp tools that may damage the screen surface.
7. This product is suitable for general business and domestic use, and it is recommended to operate it within an ambient temperature range of -20°C to 60°C .
8. Remember to power off the device by disconnecting the power source when not in use.





Contact Us

For any support you need, feel free to contact us via email at

customer_service@kefeya.com (US)

kefeya_service@outlook.com (EU)

We are here to help and will do our best to respond within 24 hours.