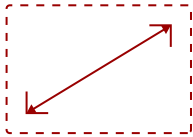


IFP5551 - 55" 4K 16:9 ANDROID EDLA VIEWBOARD INTERACTIVE FLAT PANEL DISPLAY WITH INTEGRATED MICROPHONE AND USB-C

Key Features

Floor stands, wall mounts, and mobile carts sold separately.

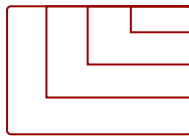
- Robust Security with Android 14 EDLA
- Native Access to Google Education Ecosystem
- Engaging Lessons with ViewSonic® Education Software
- Easy Access with Direct Sign-In
- Responsive Writing Experience
- Instantaneous Collaboration with Write-Away Technology
- Immersive Audio for Maximum Engagement
- Seamless Android Experience with Backward Compatibility



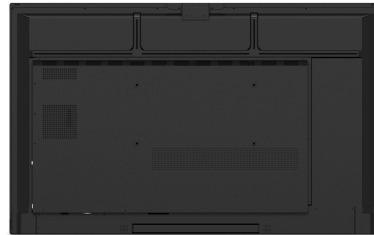
55
DISPLAY



PANEL



RESOLUTION



Product Description

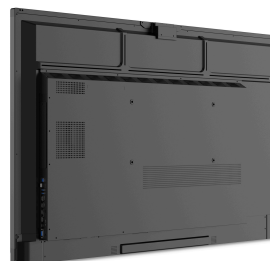
Transform your classroom into a dynamic learning environment with the ViewSonic® ViewBoard® IFP5551. This 55" interactive flat panel display, featuring Android™ 14 EDLA certification, provides a secure and intuitive platform for seamless teaching. Enhance your lessons with direct access to your Google and Microsoft 365 files and utilize pre-installed ViewSonic® education software to foster engaging collaboration, effectively turning the screen into a powerful digital whiteboard. Start teaching instantly with quick sign-in, and enjoy smooth, natural interaction with the 50-point touchscreen and palm rejection technology. Captivate your students with immersive sound from the 70W speakers and a beamforming mic array. Experience uninterrupted lessons thanks to the powerful octa-core processor for smooth multitasking. Plus, feel good about your technology choices; EPEAT Gold and ENERGY STAR 8.0 certifications demonstrate a commitment to sustainability, making this interactive display a responsible choice for enhancing digital learning in schools.

Specifications

	More Information
UPC	766907031973
OS	ViewBoard OS EDLA
GPU	Rockchip RK3576
Memory	16GB LPDDR
Storage	128GB eMMC
Microphone	Beamforming array x 8, full duplex echo cancellation
Internal Speakers	Soundbar design: 70W (25W x 2 + 20W x 1)
HDMI 2.1 In	4
HDMI Out	1
VGA	1
DisplayPort	1
SPDIF	1
USB Type A	5
USB Type B	2
USB Type C	3 (up to 65W Power Delivery)
RS232	1
Ethernet LAN (RJ45)	2
Intel® OPS Slot In (80-pin)	1
Line In	1
Voltage	100-240 VAC
Consumption (typical)	145W
Stand-by	<0.5W
Physical Controls	Power, Home, Back, Touch, Freeze, VOL-, VOL+
Temperature	32-104° F (0 - 40° C)
Non-Operating Temperature	-4°F to 140°F (-20C to 60C)
Humidity (non-condensing)	20-80%
Touch Technology	IR Recognition
Touch Points	Windows: 50, Android: 20
Tip Detection	Dual tips: 2mm and 8mm Finger: 10-15mm Palm: 30mm
Other	Palm Rejection
Latency	≤5ms
Net (lbs)	57.01
Gross (lbs)	69.69

Net (kg)	25.86
Gross (kg)	31.61
Packaging (in.)	55.16x34.57x8.66
Physical (in.)	49.99x31.08x3.3
Packaging (mm)	1401x878x220
Physical (mm)	1269.8x789.3x83.7
VESA Compatible	400 x 200 mm
Warranty	3-year limited warranty on parts, labor and backlight, onsite warranty
Recycle/Disposal	Please dispose of in accordance with local, state or federal laws.
Package Contents	Display, Power Cord (3m), USB-C Cable (1.8m) Remote with battery, USB Touch Cable (3m), Stylus x 2, QSG + Compliance statement, RS232 adapter, Clamp x 5, Camera Plate, Screw x 8 (camera 2+2, wall mount 4), HDMI cable 3m, VB-WIFI-005 WiFi Adapter
Regulations	CTUVus, FCC, Energy 8.0, EPEAT, CEC
Ethernet LAN	(10/100/1000M) (USB Type-C & Android 10/100, PC 10/100/1000)
Wifi	VB-WIFI-005 WiFi Adapter
Bluetooth	Bluetooth 5.2
Screen Size	55
Light Source	DLED
Display Resolution	3840 x 2160
Refresh Rate	60Hz
Aspect Ratio	16:9
Static Contrast Ratio	1,200:1
Dynamic Contrast Ratio	5,000:1
Backlight Life (Hours)	50,000
Brightness	400 cd/m2
Response Time (Typical GTG)	6.5ms
Viewing Angles	178° horizontal, 178° vertical
Panel Surface	Anti Glare + Anti-Fingerprint, 9H Pencil hardness / 3.2mm thickness

UPC: 766907031973



Contact Sales
[ViewSonic.com](https://www.viewsonic.com)

888.881.8781
 email:
salesinfo@viewsonic.com