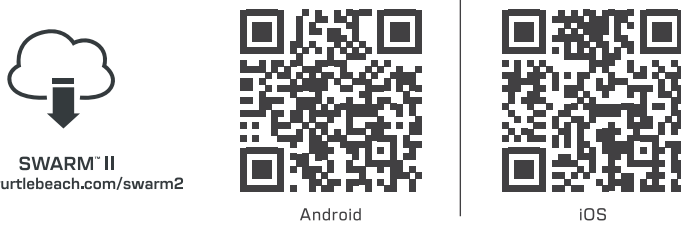
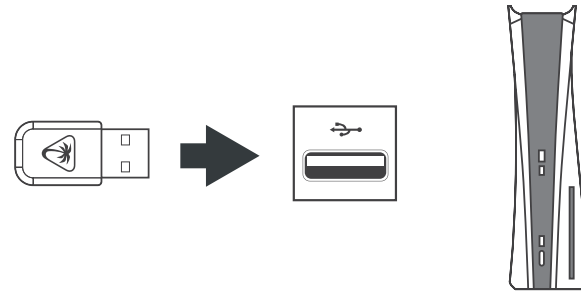


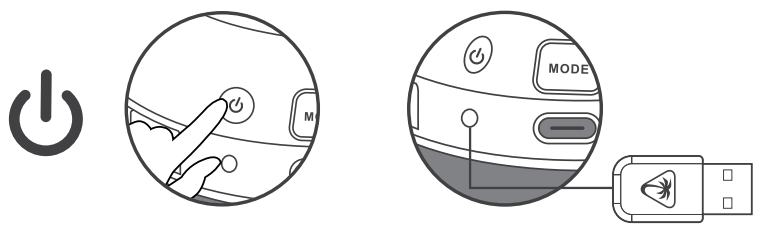
1



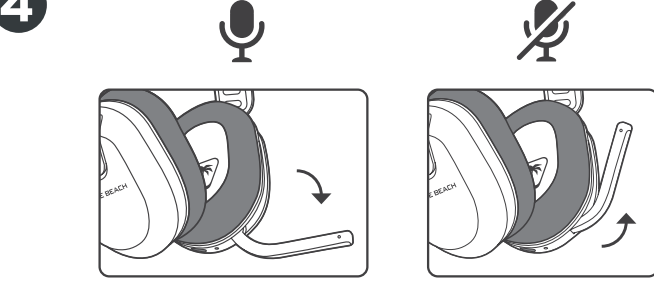
2



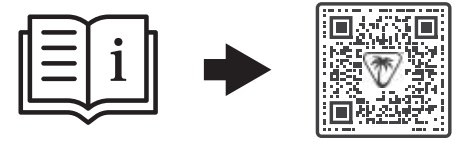
3



4



- EN** Scan the QR Code for additional instructions and support
- FR** Scannez le code QR pour plus d'instructions et d'assistance
- DE** Scanne den QR-Code für zusätzliche Anweisungen und Unterstützung
- ES** Escanea el código QR para acceder a más instrucciones y ayuda técnica
- IT** Esegui la scansione del codice QR per ottenere ulteriori istruzioni e supporto
- PL** Zeskanuj kod QR, aby uzyskać dodatkowe informacje i pomoc techniczną
- RU** Scan de QR-code voor extra instructies en ondersteuning
- SV** Skanna QR-koden för ytterligare instruktioner och support
- NO** Skann QR-koden for å få flere instruksjoner og støtte
- FI** Saat lisätietoja ja tukea skannaamalla QR-koodin
- DA** Scan QR-koden for at få flere instruktioner og support
- ES** Naskenujte QR kód a získejte další pokyny a podporu.
- HE** לקבלת הוראות נוספות ומיכּה-QR סרוק את קוד ה
- KO** 추가 지침과 지원을 받으려면 QR 코드 스캔
- JP** その他の指示とサポートについては QR コードをスキャンしてください
- CH** 掃描 QR 代碼以取得更多說明和支援



- EN** ⚠️ **WARNING:** Treat and use this consumer electronics device appropriately. Never modify this device or use it if damaged. Keep cords out of reach of children. To prevent possible hearing damage, do not listen at high volume levels for long periods. This device includes a battery. Use approved cables and chargers / dispose of the device appropriately.
- FR** ⚠️ **ATTENTION:** Traitez et utilisez cet appareil électronique grand public de la manière appropriée. Ne modifiez jamais cet appareil et ne l'utilisez jamais s'il est endommagé. Maintenez les cordons hors de la portée des enfants. Pour éviter une dégradation possible de l'ouïe, n'écoutez pas du son à des niveaux de volume élevés pendant des périodes prolongées. Cet appareil comprend une batterie : utilisez des câbles et chargeur approuvés / recyclez l'appareil de la manière appropriée.
- DE** ⚠️ **WARNUNG:** Behandle und nutze dieses Gerät der Unterhaltungselektronik sachgemäß. Verändere dieses Gerät nicht und verwende es nicht, wenn es beschädigt ist. Halte die Kabel außerhalb der Reichweite von Kindern. Um mögliche Gehörschäden zu vermeiden, solltest du das Gerät nicht über einen längeren Zeitraum mit hoher Lautstärke hören. Dieses Gerät enthält eine Batterie: Verwende zugelassene Kabel und Ladegeräte / Entsorge das Gerät ordnungsgemäß.
- ES** ⚠️ **ADVERTENCIA:** Debes tratar y usar este dispositivo electrónico de consumo de manera adecuada. No modifiques nunca este aparato ni lo utilices si está dañado. Mantén los cables fuera del alcance de los niños. Para evitar posibles daños auditivos, no pongas el volumen en niveles altos durante periodos prolongados. Este dispositivo incluye una batería: usa cables y cargadores homologados y desecha el dispositivo de la manera adecuada.
- IT** ⚠️ **ATTENZIONE:** Questo dispositivo elettronico deve essere trattato e utilizzato in modo appropriato. Non apportare modifiche al dispositivo né utilizzarlo se danneggiato. Tenere i cavi fuori dalla portata dei bambini. Per evitare possibili danni all'udito, non ascoltare ad alto volume per periodi prolungati. Il dispositivo contiene una batteria: utilizzare cavi e caricatori approvati e smaltire il dispositivo in modo appropriato.
- PL** ⚠️ **UWAGA:** Należy odpowiednio traktować to urządzenie elektroniczne i używać je zgodnie z zaleceniami. Nigdy nie należy modyfikować urządzenia ani używać go, jeśli jest uszkodzone. Przewody należy przechowywać poza zasięgiem dzieci. Aby zapobiec potencjalnemu uszkodzeniu słuchu, nie należy słuchać muzyki przy wysokim poziomie głośności przez dłuższy czas. W urządzeniu znajduje się bateria: należy używać zatwierdzonych kabli i ładowarek oraz odpowiednio zutylizować urządzenie.
- RU** ⚠️ **ВАЖНО:** Обращайтесь и используйте это электронное устройство надлежащим образом. Не изменяйте устройство и не используйте его, если оно повреждено. Держите кабели вне досягаемости детей. Чтобы избежать возможного повреждения слуха, не слушайте музыку на высокой громкости в течение длительного времени. В устройстве есть батарея: используйте одобренные кабели и зарядные устройства / утилизируйте устройство надлежащим образом.
- NO** ⚠️ **ADVARSEL:** Håndter og bruk denne forbrukerelektronikk-enheten på riktig måte. Aldri endre enheten eller bruk den hvis den er skadet. Hold ledningene utenfor rekkevidde for barn. For å forhindre mulig hørselsskade må du ikke lytte på høye volumnivåer i lange perioder. Denne enheten inneholder ett batteri. Bruk godkjente kabler og ladere, og kasser enheten på en forsvarlig måte.
- FI** ⚠️ **VAROITUS:** Käytä ja käsittele tätä kuluttajaelektronikkatuotetta asianmukaisella huolellisuudella. Älä koskaan tee laitteeseen muutoksia älkä käytä sitä, jos se on vaurioitunut. Pidä johdot pois lasten ulottuvilta. Älä kuuntele suurella äänenvoimakkuudella pitkää aikaa, jotta vältät kuulovaurion. Tämä laite sisältää akun: Käytä hyväksytyjä kaapeleita ja latureita / hävitä laite asianmukaisella tavalla.



www.turtlebeach.com/warranty
www.turtlebeach.com/support

Please Register Your Product
Veillez enregistrer votre produit
Bitte registriere dein Produkt
Registra tu producto
Registra il tuo prodotto
Zarejestruj swój produkt
Registreer je product
Registrea din produkt

Registrier produktet ditt
Rekisteröi tuotteesi
Registrier dit produkt.
Zaregistrujte svůj produkt
נא להישיר את המוצר שלך
제품을 등록하세요
製品を登録してください
請註冊您的產品

www.turtlebeach.com/productregistration

- EN** ⚠️ **ADVARSEL:** Håndter og brug din forbrugerelektronik på en korrekt måde. Undlad at foretage ændringer på denne enhed eller bruge den, hvis den er beskadiget. Hold ledninger og kabler uden for børns rækkevidde. For at undgå mulig hørselskader bør du ikke lytte til høje lydstyrker i længere perioder. Denne enhed indeholder et batteri: Brug godkendte kabler og opladere/bortskaf enheden på en korrekt måde.
- FR** ⚠️ **UPOZORNĚNÍ:** Dodržujte správné zásady používání a údržby tohoto zařízení. Zařízení nikdy neupravujte a nepoužívejte, pokud je poškozené. Kabely uchovávejte mimo dosah dětí. Abyste předešli možnému poškození sluchu, neposlouchejte po dlouhou dobu při vysoké hlasitosti. Toto zařízení obsahuje baterii: Používejte schválené kabely a nabíječky nebo zařízení vhodné zlikvidujte.
- HE** ⚠️ **אזהרה:** טפל והשתמש במכשיר האלקטרוניקה בצורה נכונה. כראוי. נעלם אין לעשות במכשיר זה או להשתמש בו או בקווי, הרחק בכלים משהיש ידם על ילדים. כדי למנוע נזק אפשרי לעיניים, אין לראות במוטע ענפנית קול בחדות בעיניך. הקביות או הכותב מנעיר זה כולל מזהיש ידם על ילדים. כדי למנוע נזק אפשרי לעיניים, אין לראות במוטע ענפנית קול בחדות בעיניך. הקביות או הכותב מנעיר זה כולל מזהיש ידם על ילדים. כדי למנוע נזק אפשרי לעיניים, אין לראות במוטע ענפנית קול בחדות בעיניך. הקביות או הכותב מנעיר זה כולל מזהיש ידם על ילדים.
- KO** ⚠️ **경고:** 이 전자 장치를 적절하게 취급하고 사용하세요. 이 장치를 개조하지 마시고 손상된 경우 사용하지 마세요. 어린이의 손이 닿지 않는 곳에 코드를 보관하세요. 장기간 소리를 받기 위해 장시간 높은 볼륨으로 듣지 마세요. 이 장치에는 배터리가 포함되어 있습니다. 승인된 케이블과 충전기를 사용하고 폐기 시 적절한 방식을 사용하세요.
- JP** ⚠️ **警告:** この家電製品は適切に扱い、使用してください。このデバイスの改造や、損傷している場合の使用は絶対にしないでください。コードはお子様の手の届かないところに保管してください。聴覚障がいを防ぐため、長時間にわたって大音量で聴かないでください。このデバイスにはバッテリーが付属しています。ケーブルや充電器は指定のものを使用し、破棄する際は適切に行ってください。
- CH** ⚠️ **警告:** 適當對待和使用該消費性電子裝置。請勿改造此裝置或使用已損壞的裝置。請將電線放置在兒童接觸不到的地方。為了防止可能造成的聽力損傷，請勿長時間以高音量聆聽。此裝置包含電池：請使用認可的連接線和充電器/妥善處理裝置。

Regulatory Compliance Statements for the STEALTH 500 (Wireless Gaming Headset – Headset Model: HWBB0005 & Dongle Model: HWA00005)

Federal Communications Commission (FCC) Compliance Notices
Class B Interference Statement
This equipment has been tested and found to comply with the limits for a Class B digital device, pursuant to Part 15, Subpart B of the FCC Rules. These limits are designed to provide reasonable protection against harmful interference in a residential installation. This equipment generates, uses, and can radiate radio frequency energy and, if not installed and used in accordance with the instructions, may cause harmful interference to radio communications. However, there is no guarantee that interference will not occur in a particular installation. If this equipment does cause harmful interference to radio or television reception, which can be determined by turning the equipment off and on, the user is encouraged to try to correct the interference by one or more of the following measures:

- Reorient or relocate the receiving antenna.
- Increase the separation between the equipment and receiver.
- Connect the equipment into an outlet on a circuit different from that to which the receiver is connected.
- Consult the dealer or an experienced radio/TV technician for help.

FCC Caution:
This device complies with Part 15 of the FCC Rules. Operation is subject to the following two conditions: (1) This device may not cause harmful interference, and (2) this device must accept any interference received, including interference that may cause undesired operation. This product is compliant with the Consumer Product Safety Improvement Act of 2008, Public Law 110-314 (CPSIA)

FCC RF Radiation Exposure Statement:
This equipment complies with FCC radiation exposure limits set forth for an uncontrolled environment. End users must follow the specific operating instructions for satisfying RF exposure compliance. This transmitter must not co-located or operating in conjunction with any other antenna or transmitter.

CANADA-statement
This device complies with Innovation, Science and Economic Development Canada's licence-exempt RSS(s). Operation is subject to the following two conditions:
(1) This device may not cause interference; and
(2) This device must accept any interference, including interference that may cause undesired operation of the device.

Le présent appareil est conforme aux CNR d'Innovation, Sciences et Développement économique Canada exempt(s) de licence(s) applicables aux appareils radio exempts de licence. L'exploitation est autorisée aux deux conditions suivantes:
(1) l'appareil ne doit pas produire de brouillage;
(2) l'utilisateur de l'appareil doit accepter tout brouillage radioélectrique subi, même si le brouillage est susceptible d'en compromettre le fonctionnement.

Radiation Exposure Statement:
The product complies with Canada portable RF exposure limits set forth for an uncontrolled environment and is safe for intended operation as described in this manual. The further RF exposure reduction can be achieved if the product can be kept as far as possible from the user body or set the device to lower output power if such function is available.

Le produit est conforme aux limites d'exposition pour les appareils portables RF pour les Etats-Unis et le Canada établies pour un environnement non contrôlé. Le produit est sûr pour un fonctionnement tel que décrit dans ce manuel. La réduction aux expositions RF peut être augmentée si l'appareil peut être conservé aussi loin que possible du corps de l'utilisateur ou que le dispositif est réglé sur la puissance de sortie la plus faible si une telle fonction est disponible.

European Union and European Fair Trade Association (EFTA) Regulatory Compliance
Declaration of Conformity
Marking by this symbol:

Hereby, Voyetra Turtle Beach Inc. declares that **Stealth 500** Headset Model: HWBB0005 & Dongle Model: HWA00005 is in compliance with Directive 2014/30/EU(EMC), 2014/53/EU(RFED), 2014/35/EU(Safety), 2015/363 amending Annex II to 2011/65/EC(RoHS), 2012/19/EU (WEEE), 2006/1907/EU (REACH), 94/62/EC (PACKAGING), 2006/66/EC (Battery), Electromagnetic Compatibility Regulations 2016(EMC), Radio Equipment Regulations 2017(Radio), Electrical Equipment Regulations 2016(Safety), The Restriction of the Use of Certain Hazardous Substances in Electrical and Electronic Equipment Regulations 2012.

The full text of the EU/UK declaration of conformity is available at the following internet address: <http://www.turtlebeach.com/homologation>

Radio frequency: 2400MHz
Operating frequency: 2400-2483,5MHz
Max. Output power: 4 dBm

This symbol on the product or its packaging indicates that this product must not be disposed of with your other household waste. Instead, it is your responsibility to dispose of your waste equipment by handing it over to a designated collection point for the recycling of waste electrical and electronic equipment. The separate collection and recycling of your waste equipment at the time of disposal will help conserve natural resources and ensure that it is recycled in a manner that protects human health and the environment. For more information about where you can drop off your waste for recycling, please contact your local authority or where you purchased your product.

Turtle Beach Europe Ltd is obligated as a producer with a main activity of selling under The Producer Responsibility Obligations (Packaging Waste) Regulations 2007. To fulfil our obligation we are registered with Comply Direct and their Recycling Room. Here you will find advice and information on packaging waste management, recycling symbols and the waste hierarchy principles of reduce, reuse and recycle.
<https://www.complydirect.com/the-recycling-room/> For instructions in other languages, please visit: <http://www.turtlebeach.com/homologation>

La operación de este equipo está sujeta a las siguientes dos condiciones: (1) es posible que este equipo o dispositivo no cause interferencia perjudicial y (2) este equipo o dispositivo debe aceptar cualquier interferencia, incluyendo la que pueda causar su operación no deseada.
Copyright © 2024 Voyetra Turtle Beach, Inc. ("Turtle Beach") All rights reserved. TURTLE BEACH, the palm tree logo, STEALTH and Swarm are the trademarks and/or registered trademarks of Turtle Beach.

この装置は、安全な機器です。この装置は、住宅環境で使用することを前提としていますが、この装置が十分な shielding を確保して設置されておらず、他の機器と近接して使用されると、受信機を引き起こすことがあります。取扱説明書に従って正しい取り扱いをしてください。VCC社製

此設備係受電及發射型之無線電產品，其使用須符合電檢局之規定。

項目	規格	標準	型式	電圧	出力	電圧	電圧
無線電波	5	-	-	-	-	-	-
無線電波	12	-	-	-	-	-	-
無線電波	12	-	-	-	-	-	-

無線電波
型式: HWBB0005
標準: FCC/CE
電圧規格: 3.7VDC, 500mAh
無線電波: 2.4GHz

BSMI 用特許聲明表登録上
<https://bsmi.turtlebeach.com/>

Taiwan NCC Statement
取得審驗證明之低功率射頻器材，非經核准，公司、商號或使用者均不得擅自變更頻率、加大功率或變更原設計之特性及功能。低功率射頻器材之使用不得影響飛航安全及干擾合法通信；經發現有干擾現象時，應立即停用，並改善至無干擾時方得繼續使用。前述合法通信，指依電信管理法規規定作業之無線電通信。低功率射頻器材必須符合法律規定之工業、科技及醫療用電波輻射性電機設備之干擾。

TURTLE BEACH
STEALTH™ 500

READ BEFORE USING | À lire avant utilisation | Vor dem Gebrauch lesen
Lee esto antes de usar los auriculares | Leggere prima dell'uso | Przeczytaj przed użyciem
Lees voor gebruik | Läs innan du använder | Les før bruk | Lue ennen käyttöä | Læs inden brug
Před použitím si přečtěte | קרא לפני השימוש | 사용 전에 숙지 | 使用前にお読みください | 使用前請閱讀

CERTIFICATION MODEL:
STEALTH 500
HEADSET: HWBB0005
DONGLE: HWA00005