



PointWrite User Manual

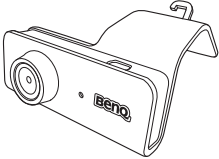

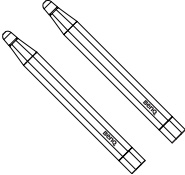
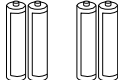
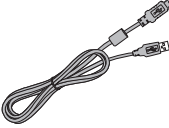
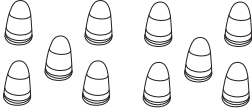

PW03

Table of contents

Shipping contents.....	3
Prepare for setup.....	4
Environmental condition	4
Instructions for surface.....	5
PointWrite Module	
Installation on Projector	7
About PointWrite Pen	8
Installing the batteries.....	8
Replacing the pen tip.....	8
Driver Installation.....	9
Driver installation complete	10
Connecting the PointWrite to PC	11
Set up for interactive function	12
Configuration setting.....	12
Alignment instructions.....	13
PointWrite Calibration.....	14
Start for interactive function.....	15
Specifications	16

Shipping contents

The PointWrite is a built in Interactive Whiteboard on the projector. To use the PointWrite correctly, please find the standard accessories below and follow the instructions in this manual.

<p>1</p> 	<p>2</p> 	<p>3</p> 
<p>PointWrite (PW03)</p>	<p>Quick manual</p>	<p>Two PointWrite pens (PointWrite Pen G2)</p>
<p>4</p> 	<p>5</p> 	<p>6</p> 
<p>Two sets of batteries</p>	<p>Mini USB cable</p>	<p>Extra pen tips</p>
<p>7</p> 	<p>8</p>	
<p>Screws</p>		

1. PointWrite: Interactive Whiteboard Sensor.
2. Quick Start Guide: Short cut of how to use the PointWrite.
3. Two PointWrite Pens (PointWrite Pen G2)¹: PointWrite Pen is a pen type wireless mouse. Before using the pen, insert the batteries into the pen.
4. Batteries: AAA size batteries.
5. Mini USB Cable: Connects the PointWrite to PC.
6. Extra Pen Tips.
7. Screws: One extra screw is in reserve.

¹. PointWrite Pen G2 can only be compatible with selected PointWrite Module.

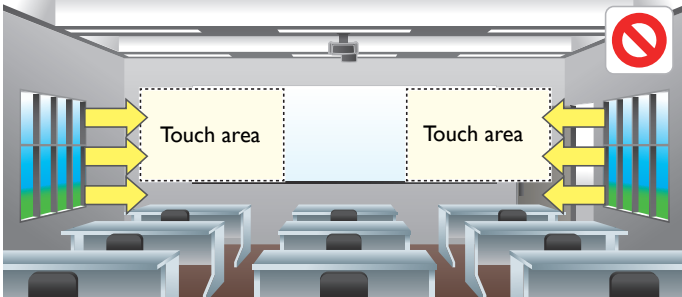
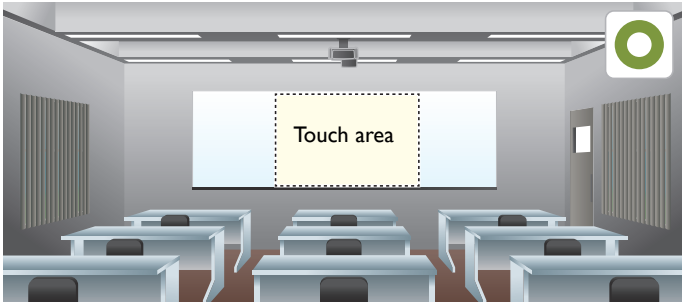
Prepare for setup

Environmental condition

For an BenQ projector with the scalable interactive functionality, transforming any flat surface into a virtual interactive whiteboard.

For an optimal interactive writing quality, follow these guidelines:

1. Close window curtains.
2. Select a projection area away from direct sunlight to prevent writing interference.
3. Keep infrared devices, such as: infrared microphones, away from the front side of the screen to prevent interference.
4. Remove accessories, such as: watches or necklaces, with a reflective surface to prevent interference.

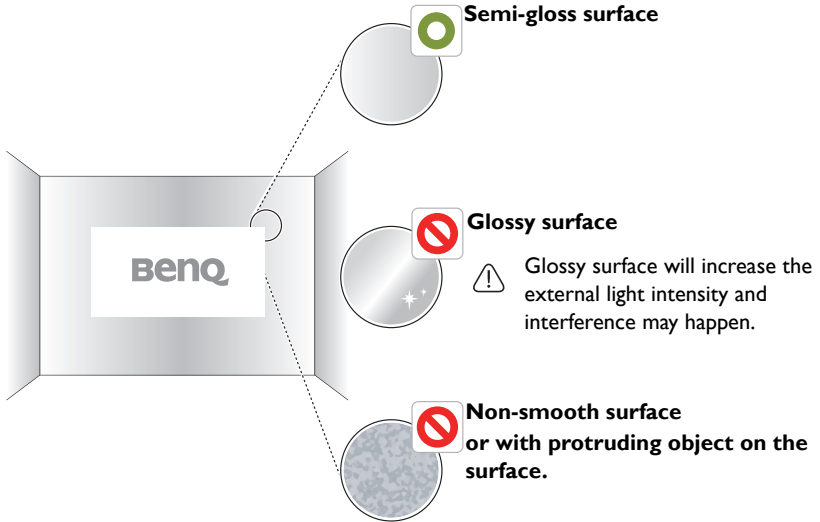


Instructions for surface

Optimal interactive quality will be dependent on the selected surface condition. It is important to choose a flat and non-reflective surface to secure the writing performance.

Selecting a wall surface

- Select a wall that is straight and flat, avoid any protruding objects on it.
- Project on a smooth, semi-gloss painted surface to reduce glare from the projector, to achieve optimal touch quality and to reduce wear on the pen nib.



Selecting a board surface


Attach a dry-erase board to the wall if you're projecting on a textured wall surface. A dry-erase board is a flat surface that works well with your interactive projector and allows you to write smoothly in digital ink.





Instructions for a board surface

Consider the following factors when selecting a board to project to optimized the interactive quality.

- The board surface require to be semi-glossy or matt.
- The board with glossy and reflected surface is not recommended, the surface will increase the external light intensity and unexpected interference may happen.

 **Caution:** For a existing glossy board, it is recommend to use the projection film to coverage the existing surface to get a better interactive quality.

Comparison of the board surface

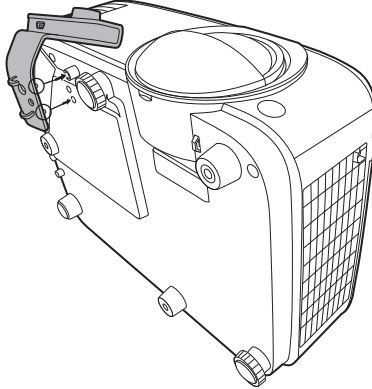
Surface	Board material	Performance
Semi glossy/Matt 	Dry erase board	Best! The surface will eliminate reflection intensity.
Glossy 	•General whiteboard •With Galvanized steel •With Ceramic steel panel	Risk! Interference may happen during writing.

PointWrite Module Installation on Projector

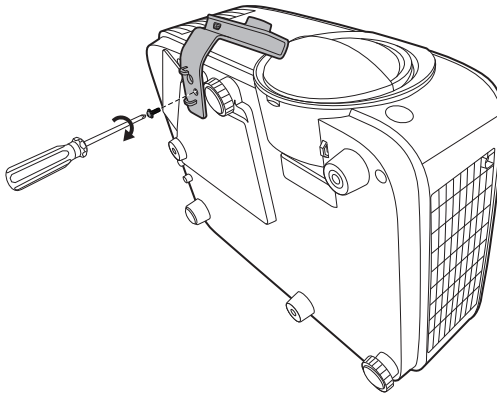
The PointWrite module is available for BenQ selected projector.

Make sure the PointWrite module is installed properly before you active interactive function. * Use the screw locked on the PointWrite dummy cover to fix the PointWrite module.

1. Attach the PointWrite to the projector as illustrated.



2. Tighten the screw to secure the PointWrite.



About PointWrite Pen

The PointWrite Pen provides the following 4 actions:


Click: Touch an icon or a menu on the screen.

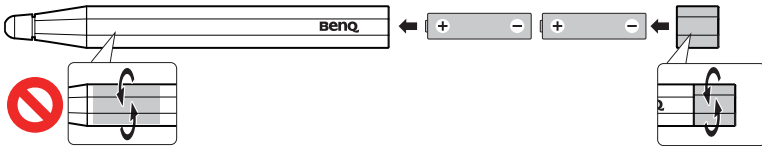
Double Click: Touch an icon or a menu on the screen two times.

Right Button Click: Touch an icon or menu for at least 1.5 seconds.

Drag: Touch and drag an object on the screen.

Installing the batteries

 **Caution:** When inserting the batteries into the PointWrite Pen, make sure the battery polarities are correct.

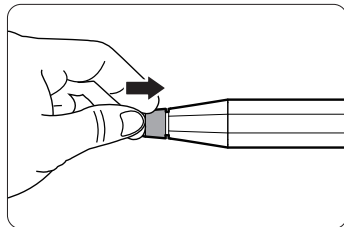
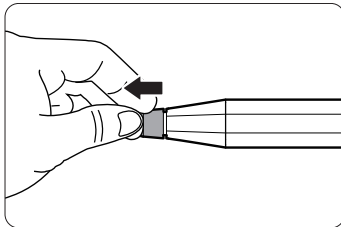


Remark:

To save the battery power, the pen will power off automatically when pen nib is pressed over than 30 seconds.

Replacing the pen tip

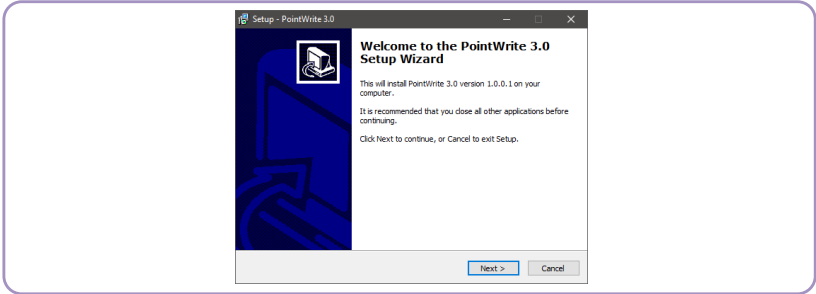
1. Removing the pen tip
Hold the pen tip with your fingers. Shake and pull the pen tip out of the pen.
2. Inserting the pen tip
Push the pen tip gently, but not abruptly.



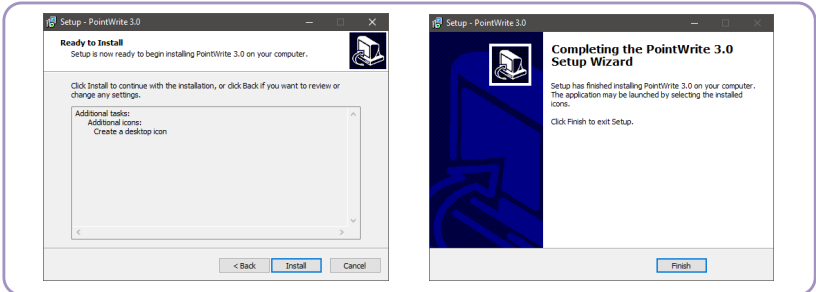
Driver Installation

When you are the first time to use this PointWrite Module, please install set-up driver for Configuration setting.

1. Please go to below BenQ Display Website to download PointWrite Set-up driver <https://business-display.benq.com/en/findproduct/projector/accessory/pointwrite-pw03.html>
Go to BenQ Website >> Search PW03 >> Go to "Download Page"
2. Follow the on-screen instructions to install the driver.



3. Complete the installation.



Driver installation complete

The PointWrite icon  will be created on the desktop.

The installation folder will be created on C: directory.

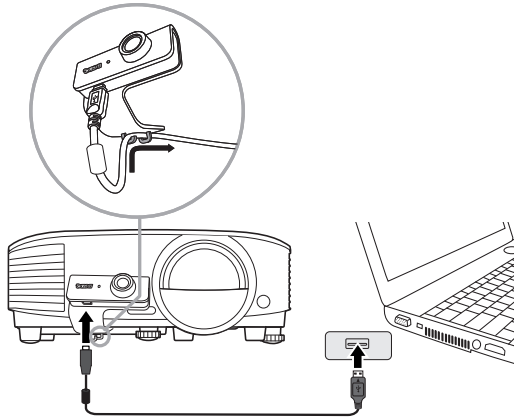
- 64-bit Windows: C:\Program Files (x86)\BenQ\PointWrite 3.0
- 32-bit Windows: C:\Program Files\BenQ\PointWrite 3.0

Remark:

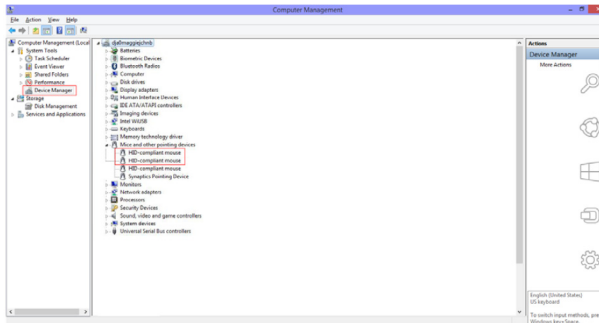
Only First time using the PointWrite module need to install set-up driver for Configuration setting, the subsequent users can only plug the USB cable to connect to PC to start the interaction quickly without driver installation.

Connecting the PointWrite to PC

Use the USB cable² to connect the PointWrite to PC. Plug the USB mini-B end into the PointWrite and plug the USB type-A end into PC.



Check “Device Manager” from your computer to make sure that PointWrite device is recognized by your computer.

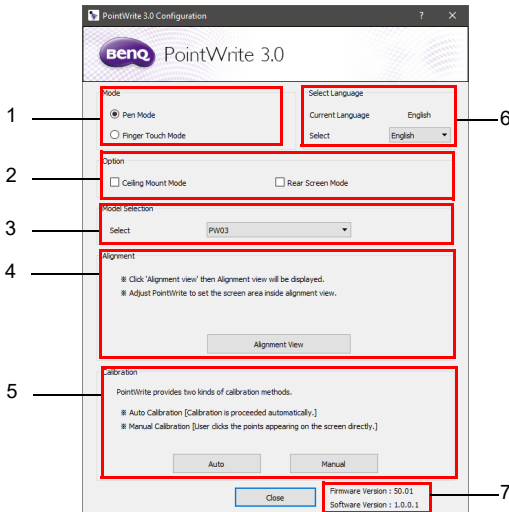


². A USB cable of 5 meters is provided. Use a USB repeater cable if you need to extend the length.

Set up for interactive function

To use the PointWrite, the proper setting of the PointWrite configuration is needed. The Configuration setting window will help you to set up PointWrite correctly.

Configuration setting



1. PointWrite Mode:

- **Pen Mode:** Default selection.
- **Finger Touch Mode:** Only available when PointWrite Module works with BenQ PointWrite Touch module³. When selecting Finger Touch mode, pen and finger can be used simultaneously.

2. PointWrite Option:

- **Ceiling Mount Mode:** Click this item if you mount the projector on the ceiling. When the projector is placed on the table, do not click this item.
- **Rear Screen Mode:** If the projector is installed on the rear screen system, click this item.

3. Model Selection: Select the PointWrite model that you are using.

4. PointWrite Alignment: See "[Alignment instructions](#)" on page 13 for details.

5. PointWrite Calibration: See "[PointWrite Calibration](#)" on page 14 for details.

6. PointWrite Language: The default language is the same as the language for your operating system. If you want to change the language, click on **Select** and then language list will display. **After selecting your preferred language, quit the PointWrite and start the PointWrite again.**

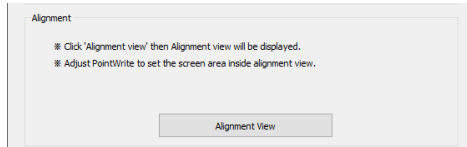
7. Information: Shows the camera firmware version.

³ PW03 is compatible with selected PointWrite Touch module, which is an optional accessory and will be available soon.

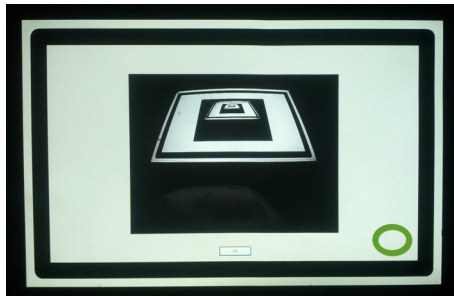
Alignment instructions

Alignment view

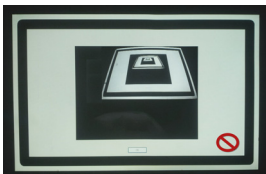
The PointWrite Alignment function is to set the orientation of the PointWrite to the screen.



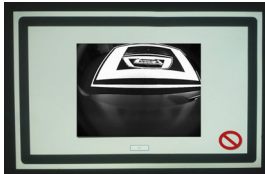
Alignment View: When clicking on the “Alignment View”, the screen image is displayed on the alignment view as illustrated.



If the screen image is not in the center, the calibration will fail. Please make sure the PointWrite module is attached to the projector properly.



• Right side conflict



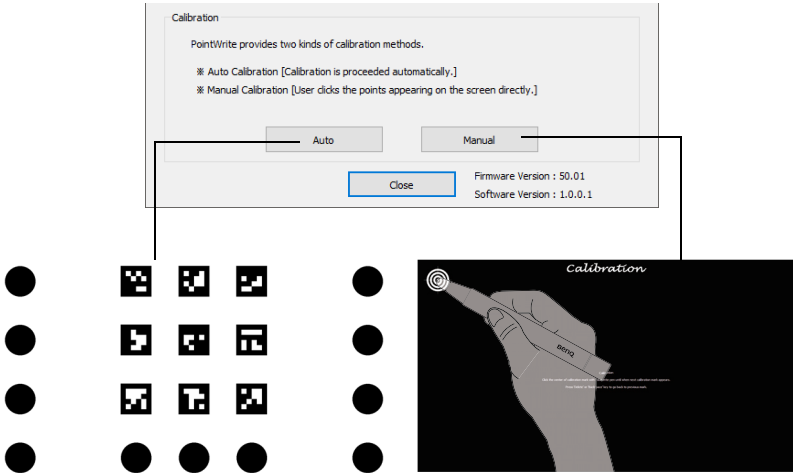
• Upper side conflict



• Left side conflict

PointWrite Calibration


PointWrite provides two kinds of calibration methods: auto calibration and manual calibration.




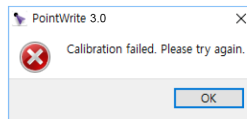
Auto calibration: click on and the calibration process will run automatically.

When you choose this method, white image is shown on the screen and the pattern image is displayed.

Manual calibration: Click on and the calibration window will be projected on the screen.

Use the PointWrite pen to click on the center of calibration cursor  immediately after it appears. Then the next cursor will display. Repeat this process until the last calibration cursor disappears.

 **Caution:** In rare circumstances, auto calibration may fail or accuracy may be low. In this case, please execute the manual calibration.

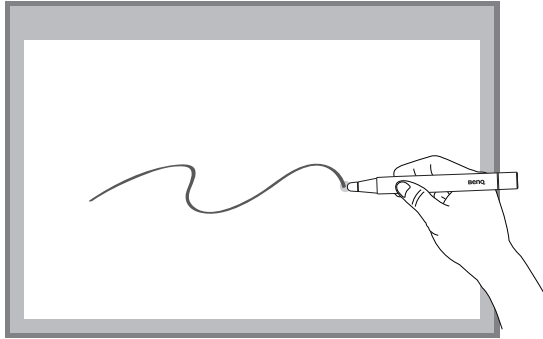


Start for interactive function

After completing calibration, you can use PointWrite pen as mouse function or launch QWrite software for writing and annotation.

Remark:

*QWrite is BenQ exclusive annotation software, please go to BenQ Website to Download QWrite software.



Notice:

1. To secure the quality of interactive function, we suggest users to adjust projector's input signal (computer output signal) to the same as projector's Native resolution.
2. If computer's output signal changed upon switching to different PC due to the output limitation of Graphic card, we suggest to install the set-up driver and redo the PointWrite Calibration.

Specifications

Item	Description
PointWrite	
Model name	PW03
Technology	Image Processing Technology
Refresh Rate	60Hz
Response Time	Max. 0.016 sec
Auto Calibration	Yes
Calibration Accuracy ^a	Max +/-2 Pixel
Operating Distance	Follow Projector Specification
Multi-User	10 pen simultaneously
Multiple Operation	2 Units
PC Connection	Mini USB
Power Source	PC USB Power
Max USB Cable Length	15 m (5 m USB cable + Repeater cable)
OS Supported	Windows: Windows 8, 10 Mac: 10.9 or later
Operating Temp/Humidity	5°C ~ 40°C / 10%~85% RH (Max.) non-condensing, Inside Projector
Storage Temp/Humidity	-10°C ~ 60°C / 5%~95% RH (Max.)
Dimensions	71 mm x 48.3 mm x 93.6 mm
Weight	32 g
Compatible model	Selected BenQ short throw models
PointWrite Pen	
Power	AAA Battery*2
Length	164 mm
Diameter	16 mm
Weight	27 g (without batteries)
Color	Black

^a. The accuracy of auto calibration will be impacted depending on your environment.