



PLANAR[®]

PLANAR
COMPLETE

Pre-Packaged LED & LCD Video Walls

About Planar

Since 1983, Planar display solutions have benefitted countless organizations in every application. Planar displays are usually front and center, dutifully delivering the visual experiences and critical information customers need, with a variety of proven technologies built to withstand the rigors of constant use.

Planar directly employs several hundred employees across North America responsible for product development, manufacturing and all aspects of customer engagement. In addition, Planar has hundreds more Authorized Resellers employing thousands of Planar-trained personnel, providing a level of local service and support unmatched in the Pro AV industry.





Planar Complete

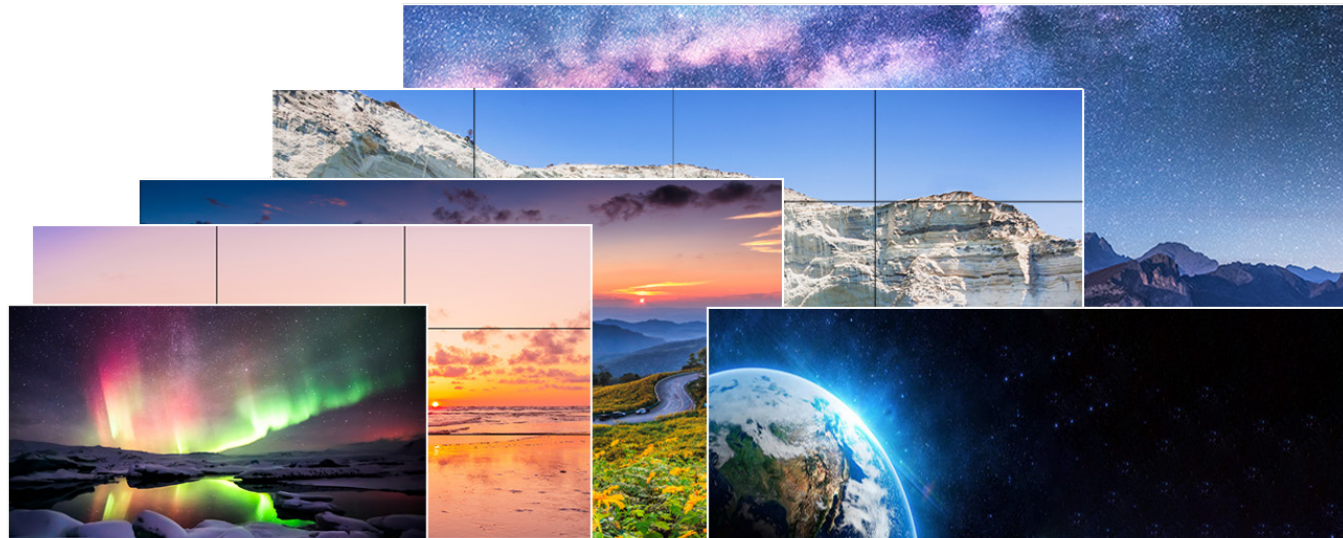
Pre-Packaged LED & LCD Video Walls

Planar® Complete™ Video Wall displays reduce the time, complexity and cost of designing and installing Planar LED and LCD Video Walls. They're pre-configured with popular sizes, resolutions, and in the case of LCD, tiled bezel widths for a seemingly off-the-shelf experience.

With Planar Complete video walls we package everything like the displays and controller to the cables and mounts. Simply select the video wall technology and size that best suits your environment and application, and receive the complete package all included.

With a variety of technology, size, resolution, processing cost and feature options, there's always a perfect Planar Complete series.

- **Includes Everything**
- **Full HD to 8K Resolution**
- **Planar® EverCare™ Lifetime Warranty***
- **Planar® WallDirector™ Video Controller Premium Processing***
- **U.S. TAA and ADA Compliant***
- **ENERGY STAR® certified***



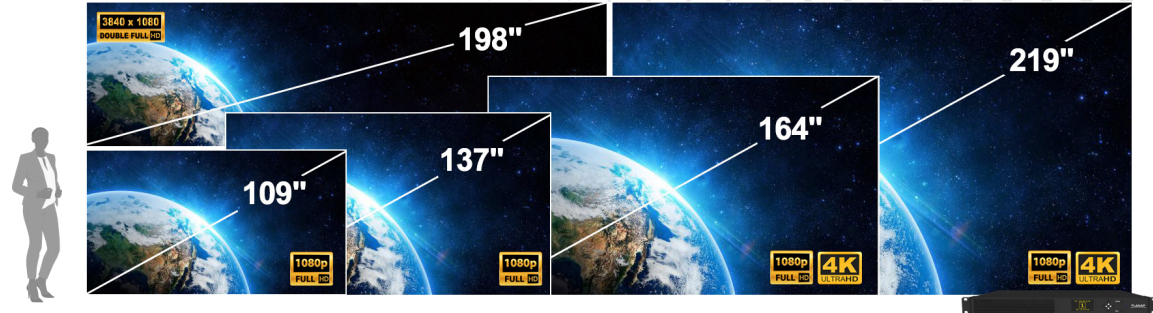
Planar® TVF Complete™

Premium LED Video Wall Display

Advanced Processing, Lifetime Coverage, 24x7 Design



- Seamless LED video wall displays
- 14 distinct models to choose from
- Planar® EverCare™ Lifetime Limited Warranty
- Premium processing with Planar® WallDirector™ Video Controller & software
- Models with 16:9 or wide-view 32:9 aspect ratio
- Advanced windowing & scaling
- U.S. TAA Compliant
- U.S. ADA Compliant
- Includes: display cabinets, controller, mounts, cables, trim, remote control & spare modules



Resolution	Size	Pixel Pitch	Part Number	MSRP (USD)
Full HD (1920x1080)	109"	1.2mm	998-2600-00	\$65,600
	137"	1.5mm	998-2602-00	\$78,000
	164"	1.8mm	998-2604-00	\$87,500
	219"	2.5mm	998-2606-00	\$109,900
Double Full HD (3840x1080)	198" (wide)	1.2mm	998-2612-00	\$118,667
4K (3840x2160)	164"	0.9mm	998-2608-00	\$260,000
	219"	1.2mm	998-2610-00	\$220,000
Assisted Installation Services (Sold Separately)				
Assisted Install for HD models*			905-0116-00	\$10,667
Assisted Install for UHD & DHD models*			905-0117-00	\$14,000

*North America Only

Planar® MGP Complete™

LED Video Wall Display

Essential Features, Accessible Technology Upgrade

- Seamless LED video wall displays
- Affordable alternative for older technologies
- U.S. ADA Compliant
- Comfortable viewing as close as 7'
- 16:9 aspect ratio
- Starting as low as \$40,000 (MSRP USD)
- Includes: display cabinets, video controller, mounts cables & spare modules



Resolution	Size	Pixel Pitch	Part Number	MSRP (USD)
Full HD (1920x1080)	108"	1.2mm	998-2623-00	\$40,000
	136"	1.5mm	998-2624-00	\$43,650
	163"	1.8mm	998-2625-00	\$53,350
Assisted Installation Services (Sold Separately)				
Assisted Install for HD models*			905-0116-00	\$10,667

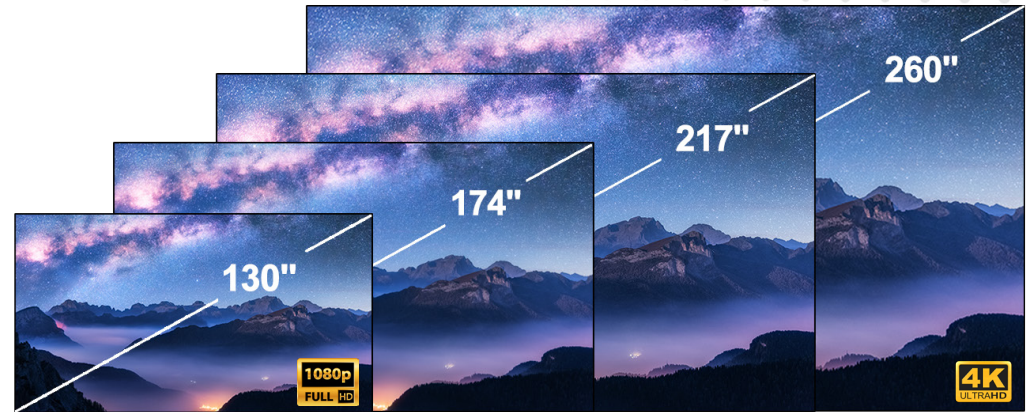
*North America Only

Planar® HRO Complete™

Outdoor LED Video Wall Display

High Brightness, Fine Pixel Pitch, Weatherproof

- Seamless outdoor LED video wall displays
- Ingress Protection Rating of IP65 (front) & IP54 (rear) for outdoor use
- At least 3,500 nit brightness
- Supports High Dynamic Range (HDR) content
- 16:9 aspect ratio for video
- Full front service accessibility
- Includes: display cabinets, video controller, wall mounts, cables & spare modules



Resolution	Size	Pixel Pitch	Part Number	MSRP (USD)
Full HD (1920x1080)	130"	1.5mm	998-2368-00	\$116,000
Full HD+ (2048x1152)	174"	1.8mm	998-2369-00	\$162,400
Full HD+ (2560x1440)	217"	1.8mm	998-2370-00	\$239,493
4K (3840x2160)	260"	1.5mm	998-2371-00	\$460,000

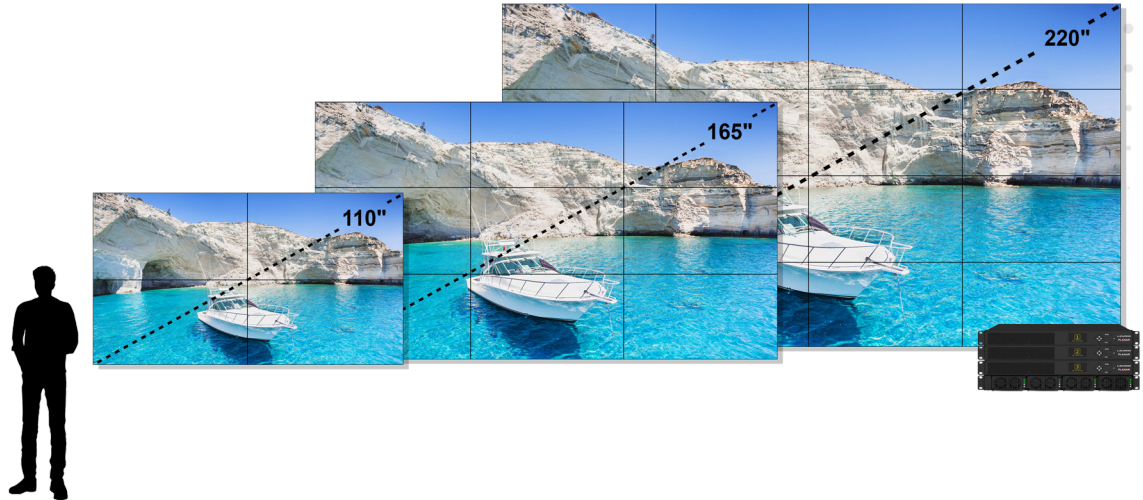
Clarity® Matrix® G3 Complete™

Premium LCD Video Wall

High Performance, 24x7 Reliability, Thinnest Bezels



- Ultra-thin bezel LCD video walls
- Premium processing with Planar® WallDirector™ Video Controller & Software
- Mission-critical 24x7 design
- Advanced windowing & scaling
- U.S. TAA Compliant
- Includes: displays, mounts, trim, cables, video controller and power supply electronics



Total Resolution	Total Size	Configuration	Display Size	Tiled Bezel Width	Part Number	MSRP (USD)
4K (3840x2160)	110"	2x2	55"	0.88mm	998-1881-00	\$27,247
6K (5760x3240)	165"	3x3	55"	0.88mm	998-1882-00	\$60,000
8K (7680x4320)	220"	4x4	55"	0.88mm	998-1883-00	\$105,533
Assisted Installation Services (Sold Separately)						
Assisted Install Clarity Matrix 2x2					905-0118-00	\$5,047
Assisted Install Clarity Matrix 3x3					905-0119-00	\$7,893
Assisted Install Clarity Matrix 4x4					905-0120-00	\$12,253

*North America Only

Planar® VM Complete™

LCD Video Wall

Essential Features, Energy Efficient, Bargain Price



- Narrow tiled bezel LCD video walls
- Offered in 2x2 or 3x3 configurations
- Full HD resolution 55" or 49" displays
- Brightness from 450 to 700 nits
- ENERGY STAR® certified displays
- Lowest cost video wall
- Includes: displays, mounts, cables & trim



Total Resolution	Total Size	Configuration	Display Size	Tiled Bezel Width	Part Number	MSRP (USD)
4K (3840x2160)	97"	2x2	49"	1.8mm	VMC49MXX4	\$18,360
		2x2	49"	3.5mm	VMC49LXU4	\$11,640
	109"	2x2	55"	0.88mm	VMC55MXM4	\$23,176
		2x2	55"	3.5mm	VMC55LXU4	\$12,644
6K (5760x3240)	146"	3x3	49"	1.8mm	VMC49MXX9	\$40,701
	164"	3x3	55"	0.88mm	VMC55MXM9	\$51,465
		3x3	55"	3.5mm	VMC55LXU9	\$27,768



Financing Available

Multi-year Leasing Program for Planar Display Solutions

Planar recognizes deploying new display technology can have a significant budget impact. Now customers can enjoy the benefits of deploying the latest in display technology without the large upfront costs!

With the Planar® EverNew™ Managed Service Program, costs can be converted from a large capital expense to more manageable, fixed and predictable monthly operating expenses. Moreover, reduce the risk of technology obsolescence through our guaranteed upgrade option.



CONTACT US

To learn more about
Planar Complete LED & LCD Video Walls



sales@planar.com



www.planar.com/complete

PLANAR[®]