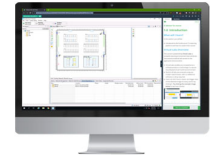


EcoStruxure™ IT Education Services

EcoStruxure IT eLearning Course

IT Advisor (9.x) + Capacity Software for Users



EcoStruxure IT Education Services, provides you with the latest training and knowledge, enabling you to maximize the use and benefits of your EcoStruxure IT software solution.

The eLearning on-line training platform and self-paced courses allow you the flexibility to complete the training when and where you need, with an individual and dedicated training environment. Take advantage of a combination of written and illustrated content, video demos and a range of useful information links to enhance your training experience. Maximizing your understanding through experiential learning.

In this course you will:

- Gain an understanding of data center Capacity
- Gain an understanding of the definitions of Redundancy
- Gain an understanding of the principles behind IT Advisor Power calculations
- Learn how to capture and analyze a devices power consumption using various methods
- Learn how to create and run Capacity Reports
- Learn how to map entire Power Paths of devices from their power source
- Learn how to configure Capacity settings for your IT devices
- Learn how to use Tool Tips and run Impact Analysis scenarios that impact on available Capacity
- Learn how to use equipment Tags and Asset Provisioning



How to Order:

It's easy to order your EcoStruxure IT eLearning, self-paced course module. Simply use the below course credit part number and description to order your credits. Course credits are provided in packs of minimum 1,000 units*. Credit pricing is available from your Schneider Electric representative or by emailing ecostruxureit.elearning@se.com. Provide your purchase order, along with your primary contact details and send to your Schneider Electric representative or email directly to ecostruxureit.elearning@se.com. Once your account is activated on the eLearning platform you can redeem your credits for this course. This IT Advisor + Capacity Course will use 750 credits (per student), with your balance available for additional eLearning courses.

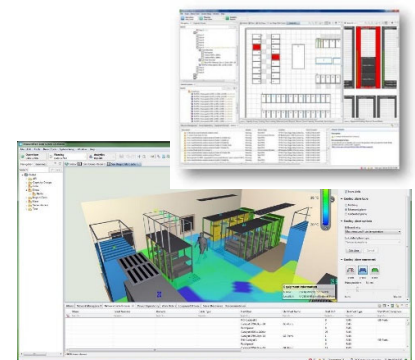
Note: Your eLearning account activation requires an accurate and up to date email address and contact phone number sent with your purchase order.

Note: This course requires completion of the pre-requisite IT Advisor (9.x) Base Course.



Use this Part Number & Description to order this Course:

SWEL1000-DIGI | IT Advisor Capacity eLearning Course | Qty* 1 per Student



se.com

Life Is On

Schneider
Electric