

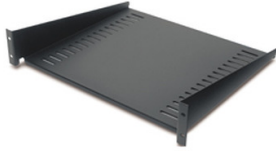
# Product data sheet

Specifications



## Fixed Shelf 50lbs/22.7kg Black

AR8105BLK



### Overview

Presentation	Cantilever fixed shelf to enable the mounting of a monitor or other equipment into the rack environment.
Lead time	Usually in Stock

### Main

Number of rack unit	2U
Number of cables	1
Provided equipment	Installation guide Mounting Hardware

### Physical

Color	Black
Height	3.5 in (8.9 cm)
Width	19.02 in (48.3 cm)
Depth	16.0 in (40.6 cm)
Net Weight	5.004 lb(US) (2.27 kg)
Mounting Location	Front
Mounting preference	No preference
Mounting Mode	Rack-mounted
Maximum Mounting Depth	16.0000000000 in (40.64 cm)
minimum mounting depth	16.0000000000 in (40.64 cm)
Permanent permissible load	50 lb(US) (22.7 kg) static

### Conformance

Standards	EIA-310D
-----------	----------

### Ordering and shipping details

GTIN	731304107859
Country of origin	CN

### Packing Units

Unit Type of Package 1	PCE
Number of Units in Package 1	1
Package 1 Height	4.02 in (10.2 cm)

Price is "List Price" and may be subject to a trade discount – check with your local distributor or retailer for actual price.

---

<b>Package 1 Width</b>	22.5 in (57.2 cm)
<b>Package 1 Length</b>	17.5 in (44.5 cm)
<b>Package 1 Weight</b>	9.394 lb(US) (4.261 kg)

---

## **Contractual warranty**

---

<b>Warranty</b>	2 years repair or replace
-----------------	---------------------------

## Sustainability

**Green Premium™ label** is Schneider Electric's commitment to delivering products with best-in-class environmental performance. Green Premium promises compliance with the latest regulations, transparency on environmental impacts, as well as circular and low-CO<sub>2</sub> products.

**Guide to assessing product sustainability** is a white paper that clarifies global eco-label standards and how to interpret environmental declarations.

[Learn more about Green Premium >](#)

[Guide to assess a product's sustainability >](#)



Take-back   Transparency   RoHS/REACH

## Resource performance


 Take-Back Program Available

---

## Well-being performance

 Reach Free Of Svhc

---

 Rohs Exemption Information   [Yes](#)

---

## Certifications & Standards

**Reach Regulation**   [REACH Declaration](#)

---

**Eu Rohs Directive**   Pro-active compliance (Product out of EU RoHS legal scope)  
[EU RoHS Declaration](#)

---

**China Rohs Regulation**   [China RoHS declaration](#)  
Pro-active China RoHS declaration (out of China RoHS legal scope)

---

**Environmental Disclosure**   [Product Environmental Profile](#)

---

**Circularity Profile**   [End of Life Information](#)

---