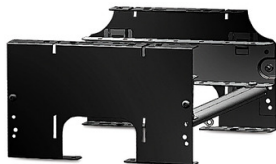


Product datasheet

Specifications



APC NetShelter Cable Management, Cable Trough, Open Bottom, Black, 297 x 183.6 x 316.2 mm

AR8580

Overview

Presentation	Trough system to route power distribution cabling between the top of an InfraStruXure PDU to an InRow NetShelter SX Enclosure.
Lead time	Usually in Stock

Main

Provided equipment	Installation guide 1 x 8 inch/20cm grounding strap
---------------------------	---

Physical

Colour	Black
Height	18.36 cm
Width	29.7 cm
Depth	31.62 cm
Net weight	2.48 kg
Mounting preference	No preference
Mounting mode	Not rack-mountable

Conformance

Product certifications	UL classified
-------------------------------	---------------

Packing Units

Unit Type of Package 1	PCE
Number of Units in Package 1	1
Package 1 Height	31.5 cm
Package 1 Width	41 cm
Package 1 Length	44 cm
Package 1 Weight	4.65 kg

Logistical informations

Country of origin	CN
--------------------------	----

Contractual warranty

Warranty	2 years repair or replace
-----------------	---------------------------

Sustainability

Green Premium™ label is Schneider Electric's commitment to delivering products with best-in-class environmental performance. Green Premium promises compliance with the latest regulations, transparency on environmental impacts, as well as circular and low-CO₂ products.

Guide to assessing product sustainability is a white paper that clarifies global eco-label standards and how to interpret environmental declarations.

[Learn more about Green Premium >](#)

[Guide to assess a product's sustainability >](#)



Take-back Transparency RoHS/REACH

Resource performance

 Take-Back Program Available

Well-being performance

 Reach Free Of Svhc

 Toxic Heavy Metal Free

 Mercury Free

 Rohs Exemption Information Yes

Certifications & Standards

Reach Regulation [REACH Declaration](#)

Eu Rohs Directive Pro-active compliance (Product out of EU RoHS legal scope)
[EU RoHS Declaration](#)

Environmental Disclosure [Product Environmental Profile](#)

Circularity Profile [End of Life Information](#)
