

SOUNDPROOF

Soundproofed “server room in a box,” that allows for IT deployment wherever and whenever it is needed

Conveniently deploy servers and networking equipment in a quiet, ventilated, secure, and office-ready cabinet.

standard features

Cooling system: Ultra-low-noise fan module

Composite wood structure with acoustic lining keeps hardware quiet and secure

Cable management: Accessory channels located on the front right and left. Cable egress located bottom for entry/exit.

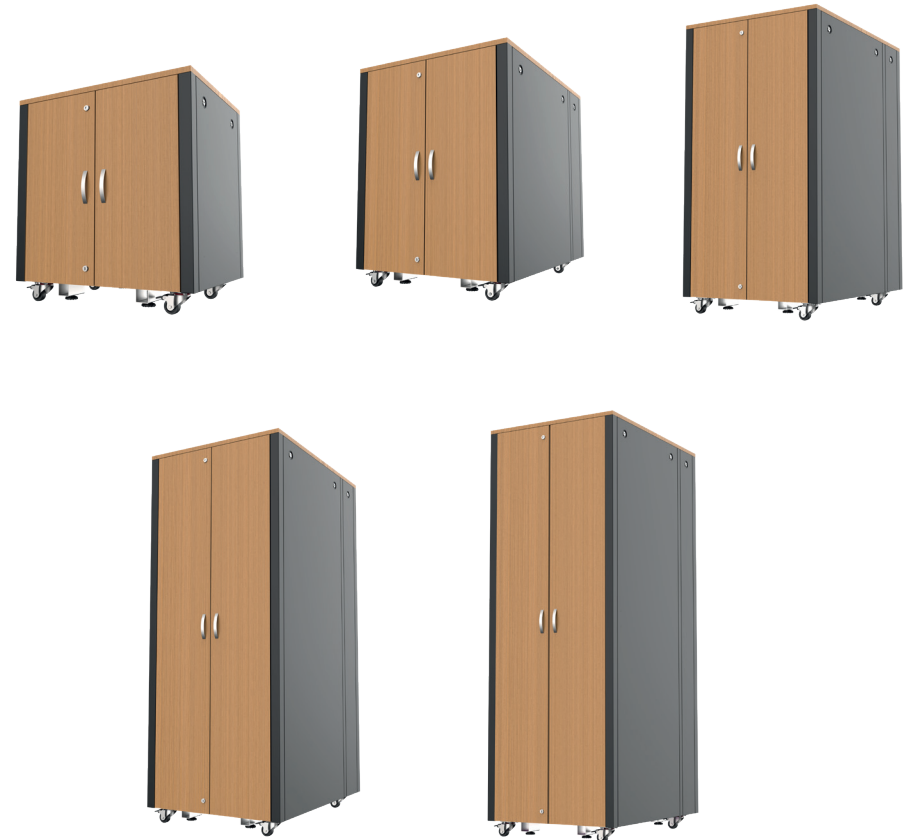
Mobility: Four casters with 360 degree rotation

Rear and side access: Rear and side panels open for equipment installation and maintenance

Door locking: Key operated lock, options for combo-style

Measurement Points	Voice Source Measurement Values	Cabinet Measurement Values
Front	50,5 dB	50,0 dB
Rear	59,0 dB	50,9 dB
Right Side	64,5 dB	49,5 dB
Left Side	58,4 dB	49,6 dB
Top	56,2 dB	49,1 dB

Product Code	U-Size	Height	Width	Depth	Number of Fans
RDLAK17U751BL-WOOD	17U	957mm	750mm	1000mm	3 pieces
RDLAK26U751BL-WOOD	26U	1357mm	750mm	1000mm	6 pieces
RDLAK36U751BL-WOOD	36U	1801mm	750mm	1000mm	9 pieces
RDLAK42U751BL-WOOD	42U	2068mm	750mm	1000mm	9 pieces





Technical Information

Features

19" Device Compatibility
Wooden Panels
Sliding Cable Entry
Brush Organizer
Insulation
Fan Module

Material

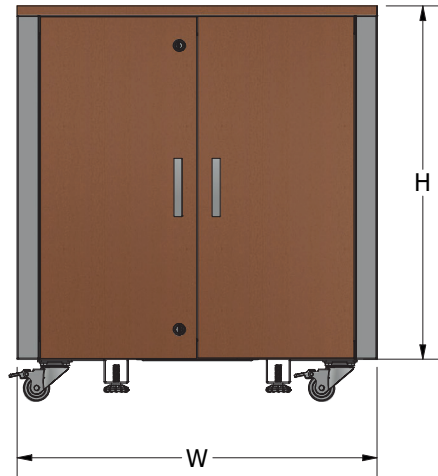
1.2 mm Steel

Appearance

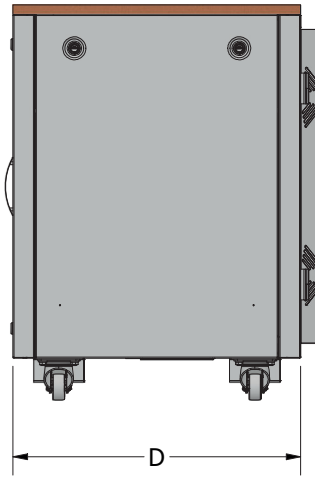
Finish Surface : Powder Coating
Color : RAL9005

TECHNICAL DETAILS;

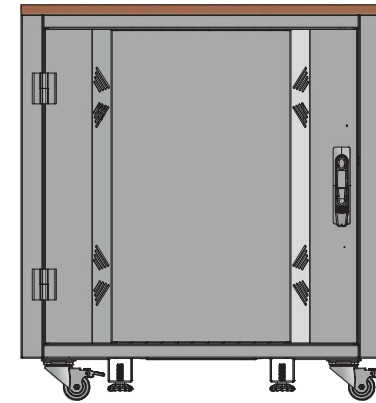
Front View



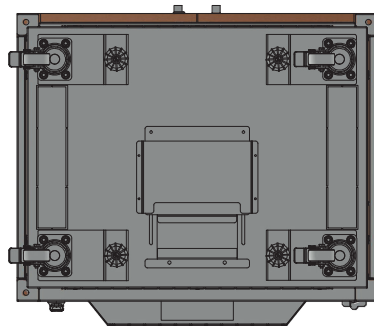
Side View



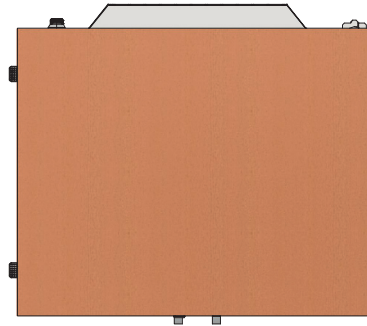
Rear View



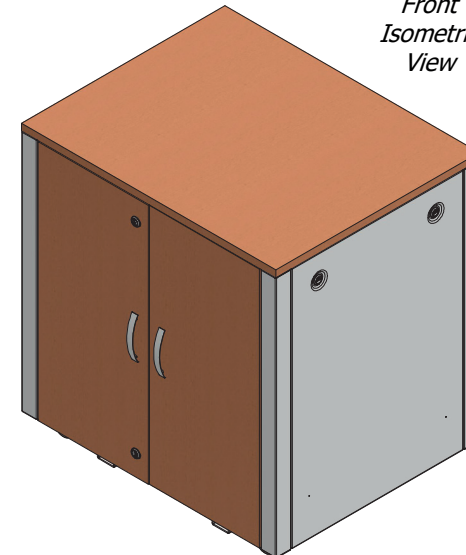
Bottom View



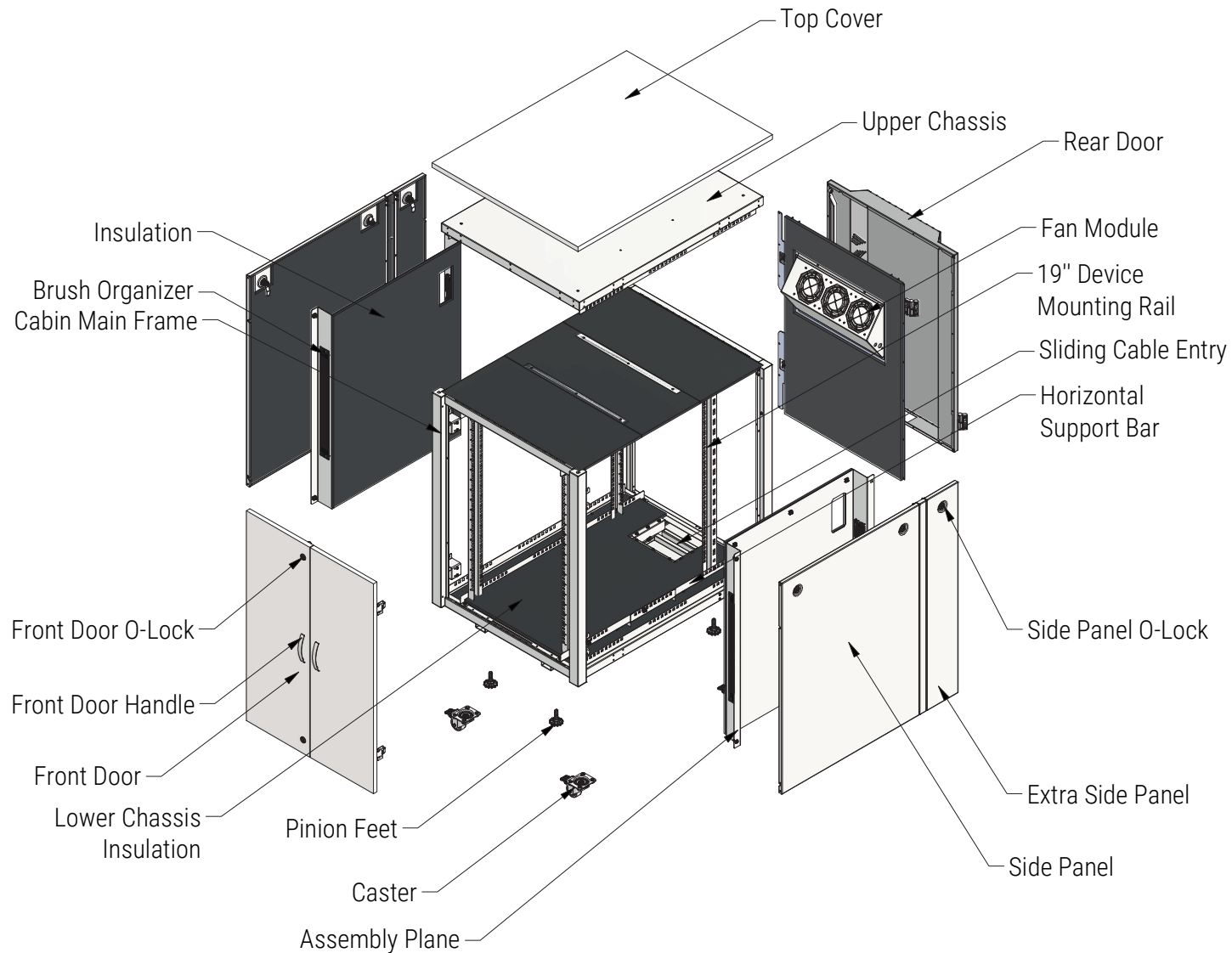
Top View



*Front
Isometric
View*



EXPLODED DETAILS;



WHEN THE DEPTH IS LESS THAN 1000 MM, NO ADDITIONAL SIDE COVER CAN BE MADE.

colors

**soundproof
with packaging**



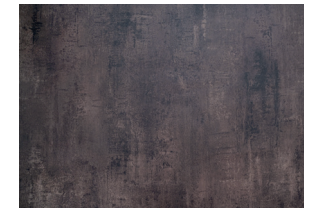
AMERICAN WALNUT-1641



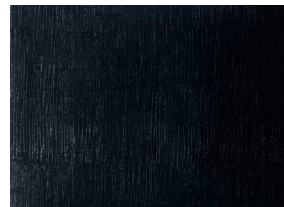
WHITE PATTERN-1630



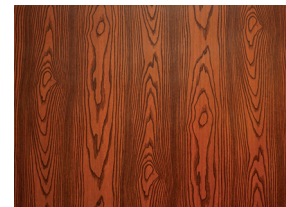
MATTE BAMBOO-1454



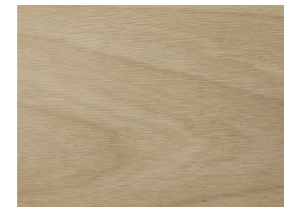
BROWN ROCK-3306



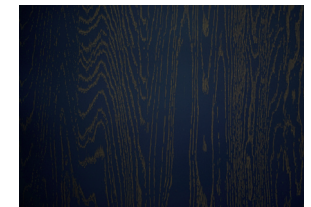
BLACK PATTERN-1631



NATURAL RED-3650



MAPLE-1452



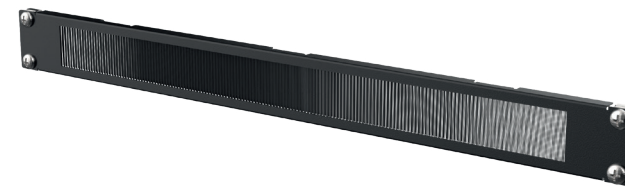
PATINA DARK BLUE-3775

**The cabin is placed on the pallet. It is packaged with an impact-resistant shell.
Packaging is designed, tested and approved for safe transportation.**

accessory



Fan booster increases the thermal capacity



1U brush organizer serves as an organizer for cable passages.



There is a plastic handle lock and different lock options for the rear door. (1).

A door handle is used on the front door(2).



1U PDU can be used optionally.

certificate



ISO 9001 Quality Management System



ISO14001 Environmental Management System
RoHS Compatibility
100% Recycled Material



Customs Union Certificate



Empty enclosures for low-voltage switchgear
and controlgear assemblies - General
requirements



2014/35/AB Regulation regarding electrical
equipment designed for certain voltage limits
2014/35/EU The Low Voltage Directive
IEC 60204-1 (Fifth Edition) + A1: 2008

2014/35/AB Regulation regarding electrical
equipment designed for certain voltage limits
2014/35/EU The Low Voltage Directive
TS EN 62208: 2014

