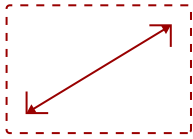


CDE5531 - 55" SMART COMMERCIAL DISPLAY, 3840X2160 RESOLUTION, 500 CD/M2 BRIGHTNESS, 24/7 OPERATION, HDMI IN/OUT, USB-C

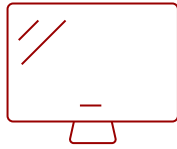
## Key Features

---

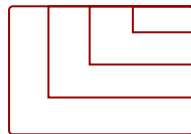
- **FAST BOOT-UP:** Start meetings quickly with a near-instant 8-second warm boot
- **STUNNING 4K UHD:** Enjoy crisp, vibrant visuals with 500-nit brightness and anti-glare clarity
- **RELIABLE 24/7 PERFORMANCE:** Built for continuous operation you can count on
- **FUTURE-PROOF AND SECURE:** Android 14 (upgradeable to 16) keeps your display protected and up to date
- **SEAMLESS AV INTEGRATION:** Works effortlessly with Crestron, Extron, AMX, and Q-SYS systems



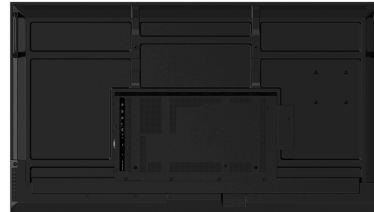
55  
DISPLAY



VA  
PANEL



RESOLUTION



## Product Description

---

Meetings are often slow, clunky, and frustrating, but they don't have to be. The ViewSonic CDE5531 commercial display is built to get your team connected and collaborating in seconds. With fast boot-up, easy setup, and a native Android AOSP platform, this 55" display will have you ready to share ideas and make decisions without the usual tech delays. A simple USB-C connection handles everything, including 4K video, data, and power, so you can finally say goodbye to tangled cables and messy installations. Plus, the anti-glare glass and optimized screen haze keep your visuals sharp and clear, no matter the lighting. The best part? These displays are designed for reliability and certified to work with top AV control systems, making them the perfect fit for any corporate meeting room or collaboration space. Step into your next meeting with confidence, clarity, and a display that works as hard as your team does.

# Specifications

	More Information
<b>UPC</b>	766907034707
<b>OS</b>	Android 14 AOSP
<b>Media Player Type</b>	Media Player
<b>GPU</b>	ARM Mali-G57 MC1
<b>CPU</b>	MT9681 (ARM Cortex-A73 x4)
<b>Memory</b>	8GB DDR4
<b>Storage</b>	32GB
<b>Photo</b>	BMP, GIF, JPEG, PNG
<b>Video</b>	AVI, FLV, F4V, MKV, MOV, MP4, MPG, WEBM
<b>Music</b>	AAC, APE, FLAC, PCM, MP3, OGG, WAV
<b>HDMI 2.1</b>	480i, 480p, 720p, 1080i, 1080p, 4K@60Hz
<b>HDMI Out</b>	4K@60Hz
<b>USB-C</b>	480p, 576p, 720p, 1080p, 4K@60Hz
<b>Internal Speakers</b>	16W (x2)
<b>HDMI 2.1 In</b>	3
<b>HDMI 2.0 Out</b>	1
<b>3.5mm Audio In</b>	1
<b>3.5mm Audio Out</b>	1
<b>SPDIF Audio Out</b>	1
<b>USB 3.0</b>	1
<b>USB 2.0</b>	1
<b>USB Type C</b>	1 (Supports DisplayPort 1.2, Power 65W, USB 2.0)
<b>RS232</b>	1
<b>RJ45 Input (Internet)</b>	1
<b>RJ-45 LAN Port Output</b>	1
<b>WIFI Module Slot</b>	1
<b>Voltage</b>	100-240 VAC +/- 10% Wide Range, 50-60Hz +/-3 Hz
<b>Consumption (max)</b>	66.94W
<b>Consumption (typical)</b>	57.75W
<b>Stand-by</b>	<0.5W
<b>Temperature</b>	32-104° F (0 - 40° C)
<b>Humidity (non-condensing)</b>	20-80%
<b>Net (lbs)</b>	28.55

<b>Gross (lbs)</b>	39.94
<b>Net (kg)</b>	12.95
<b>Gross (kg)</b>	17.98
<b>Packaging (in.)</b>	52.44 x 33.03 x 6.14
<b>Physical (in.)</b>	48.54 x 27.7 x 2.81
<b>Packaging (mm)</b>	1332 x 839 x 156
<b>Physical (mm)</b>	1233 x 703.5 x 71.4
<b>VESA Compatible</b>	400 x 400 mm
<b>Screw Size</b>	M6
<b>Screw Length (mm)</b>	12
<b>AV Control</b>	AMX Certified, Extron Certified, Crestron Connected
<b>Warranty</b>	Three-year limited warranty on parts, labor and backlight
<b>Recycle/Disposal</b>	Please dispose of in accordance with local, state or federal laws.
<b>Package Contents</b>	CDE4331 Commercial Display, Remote control with batteries, Quick Start Guide, Power cable (3m), HDMI Cable (3m), Wall Mount Screws (x4) and RS232 adapter
<b>Regulations</b>	cTUVus, FCC, Energy Star 8.0, RoHS, Mexico NOM, Mexico Energy
<b>Wifi</b>	Wi-Fi 6 (802.11ax (a/b/g/n/ac/ax))
<b>Bluetooth</b>	Bluetooth 5.0
<b>Screen Size</b>	55
<b>Viewable Area (in.)</b>	54.6
<b>Orientation</b>	Landscape / Portrait
<b>Colors</b>	1.07B
<b>Color Space Support</b>	8 bit + FRC
<b>Light Source</b>	DLED
<b>Display Resolution</b>	3840 x 2160
<b>Refresh Rate</b>	60Hz
<b>Panel Type</b>	VA
<b>Aspect Ratio</b>	16:9
<b>Static Contrast Ratio</b>	1,200:1
<b>Dynamic Contrast Ratio</b>	5,000:1
<b>Backlight Life (Hours)</b>	50,000
<b>Brightness</b>	500 cd/m2
<b>Response Time (Typical GTG)</b>	6.5ms
<b>Bezel Width (in.)</b>	0.39
<b>Bezel Width (mm)</b>	9.9
<b>Viewing Angles</b>	178° horizontal, 178° vertical

**Panel Surface**

Anti-Glare type, Hard-coating (3H), Haze 25%


**Operation Rating**

24/7

UPC: 766907034707



**Contact Sales**  
[ViewSonic.com](http://ViewSonic.com)

888.881.8781   
email:  
[salesinfo@viewsonic.com](mailto:salesinfo@viewsonic.com)