



# GUARD YOUR MISSION-CRITICAL IT EQUIPMENT

ALERTWERKS™ SERVSSENSOR MONITORING HUBS AND INTELLIGENT SENSORS

---

1.877.877.2269



[BLACKBOX.COM/ALERTWERKS](https://BLACKBOX.COM/ALERTWERKS)

# REMOTE MONITORING AND SECURITY

## BUYER'S GUIDE | ALERTWERKS SENSOR HUB COMPATIBILITY

SENSOR	CODE	SENSOR V4E	SENSORV4EL (NEED SKUS)	SERVSSENSOR SERVSSENSOR 4 SERVSSENSOR CONTACT	SERVSSENSOR JUNIOR
<b>ALERTWERKS SPOT WATER SENSORS</b>					
Temperature Sensor, SNMP with 1-Foot Fixed Cable	EME1T1SNMP	Yes	Yes	Yes	Yes
Temperature Sensor, SNMP with 5-Foot Fixed Cable	EME1T5SNMP	Yes	Yes	Yes	Yes
Temperature Sensor, SNMP with 15-Foot Water-Resistant Cable	EME1TWRSNMP	Yes	Yes	Yes	Yes
Temperature Sensor, SNMP with 15-Foot Water-Resistant Cable and Pipe Clamp	EME1TWRPSNMP	Yes	Yes	Yes	Yes
Dual Temperature Humidity Sensor, Remote, 1-Foot Cable	EME1TH1-001	Yes	Yes	Yes	Yes
Dual Temperature Humidity Sensor, Remote, 5-foot Cable	EME1TH2-005	Yes	Yes	Yes	Yes
Dual Temperature Humidity Sensor, Waterproof, 15-foot Cable	EME1TH3-015	Yes	Yes	Yes	Yes
Temperature Sensor, Daisychainable	EMEDTEMP	Yes	Yes	No	No
Temperature Sensor, Daisychainable, 4-Pack	EMEDTEMP4	Yes	Yes	No	No
Temperature Sensor, Daisychainable, 8-Pack	EMEDTEMP8	Yes	Yes	No	No
<b>I/O</b>					
4-20 mA Converter, 5-foot (1.5-m) Cable	EME1C1-005	Yes	Yes	Yes	Yes
Dry-Contact Sensor, 15-foot (4.5-m) Cable	EME1K1-015	Yes	Yes	Yes	Yes
Dry-Contact Sensor, 60-foot (18-m) Cable	EME1K1-060	Yes	Yes	Yes	Yes
Dry Contact Expansion Hub for V4E and V4P	EME1DC16	Yes	Yes	No	No
Digital I/O Sensor, (8) Dry Contacts, with 5-foot (1.5-m) Cable	EME1J8-005	Yes	Yes	No	No
Digital I/O Sensor, (2) RJ-45 to (8) Dry Contacts, with 5-foot (1.5-m) Cable	EME1KJ8-005	Yes	Yes	No	No
ServSensor Expansion Unit, 8-Port Relay Hub for V4E and V4P	EME1P8	Yes	Yes	No	No
<b>AIR/SMOKE</b>					
Airflow Sensor, 5-foot Cable	EME1F1-005-R2	Yes	Yes	Yes	No
Photoelectric Smoke Detector, 5-foot Cable	EME1S2-005	Yes	Yes	Yes	Yes
<b>FLUIDS</b>					
Water Sensor, 15-foot Cable	EME1W1-015	Yes	Yes	Yes	Yes
Water Sensor, 60-foot Cable	EME1W1-060	Yes	Yes	Yes	Yes
Water Sensor, 100-foot Cable	EME1W1-100	Yes	Yes	Yes	Yes
Rope Water Sensor, 20-foot Cable	EMERW-020-R2	Yes	Yes	Yes	Yes
Rope Water Sensor Extension, 10-foot Cable	EMERWE-010-R2	Yes	Yes	Yes	Yes
Rope Fuel Sensor, 9.8-Foot Cable	EME1RF-003	Yes	Yes	Yes	No
AlertWerks Ultrasonic Fuel Level Sensor, 15-Foot Cable	EME1FL-015	Yes	Yes	No	No



# REMOTE MONITORING AND SECURITY

## BUYER'S GUIDE | ALERTWERKS SENSOR HUB COMPATIBILITY

SENSOR	CODE	SENSOR V4E	SENSORV4EL (NEED SKUS)	SERVSSENSOR SERVSSENSOR 4 SERVSSENSOR CONTACT	SERVSSENSOR JUNIOR
<b>SECURITY</b>					
Motion Detection Sensor, 5-Foot Cable	EME1M1-005-R2	Yes	Yes	Yes	Yes
Security Sensor/Contact, 15-Foot Cable	EME1Y1-015	Yes	Yes	Yes	Yes
Security Sensor/Contact, 60-Foot Cable	EME1Y1-060	Yes	Yes	Yes	Yes
Security Sensor/Contact, 100-Foot Cable	EME1Y1-100	Yes	Yes	Yes	Yes
Siren and Strobe Light, 5-Foot Cable	EME1SS-005	Yes	Yes	Yes	Yes
<b>ELECTRICITY</b>					
AC Voltage Sensor, 5-Foot Cable	EME1A1-005	Yes	Yes	Yes	Yes
DC Voltage Sensor, 5-Foot Cable	EME1D1-005 -R2	Yes	Yes	Yes	Yes
<b>POWER SWITCHES</b>					
Power Switch, 110V, Normally Open, 5-Foot Cable	EME1P10-005	Yes	Yes	Yes	Yes
Power Switch, 220V, Normally Closed, 5-Foot Cable	EME1P2C-005	Yes	Yes	Yes	Yes
Power Switch, 220V, Normally Open, 5-Foot Cable	EME1P2O-005	Yes	Yes	Yes	Yes
Power Switch, 48 VDC, Normally Closed, 5-Foot Cable	EME1PDCC-005	Yes	Yes	Yes	Yes
Power Switch, 48 VDC, Normally Open, 5-Foot Cable	EME1PDCO-005	Yes	Yes	Yes	Yes
<b>CAMERAS</b>					
Pan/Tilt Dome Camera, NTSC	SCA201	Yes	No	No	No
Pan/Tilt Dome Camera, PAL	SCE201	Yes	No	No	No
Universal Mount Camera, NTSC	EME1FC-NTSC	Yes	No	No	No
Universal Mount Camera, PAL	EME1FC-PAL	Yes	No	No	No
<b>MOUNTING</b>					
Rackmount DIN Rail	EMEDIN	No	No	No	Yes
Dual Rackmount Bracket	EMEDRMK	Yes	Yes	Yes	No
Split Rackmount DIN Rail Bracket	EMESDIN	Yes	Yes	Yes	No
<b>EXPANSION</b>					
ServSensor Expansion Unit, 8-Port Sensor Hub	EME1X8	Yes	Yes	No	No
ServSensor Expansion Unit, 8-Port Relay Hub	EME1P8	Yes	Yes	No	No
ServSensor Expansion Unit, Dry Contact Expansion Hub	EME1DC16	Yes	Yes	No	No



## GUARD YOUR MISSION-CRITICAL IT EQUIPMENT AGAINST PHYSICAL THREATS—FROM TEMPERATURE EXTREMES TO WATER DAMAGE

### BEYOND VIRUS PROTECTION

It has become almost automatic to protect your data center by backing up your servers, installing firewalls and virus protection and keeping the protection up to date.

But what about more tangible threats? Do you have hot spots in your racks? If the cooling system shuts down, how will you know when temperatures climb out of control? Are you alerted to humidity changes or water leaks that threaten your equipment?

Planning for the unexpected is a critical task because there are more systems performing mission-critical functions than ever before. These systems are often deployed without the proper environmental infrastructure to support them. Equipment density is increasing constantly, which is creating more stress on ventilation and power.

That's where Black Box's environmental monitoring systems enter the picture.

### THE TOP THREE IT RISKS

#### 1. Environmental disruption

The number one cause of downtime for remote locations, environmental problems go beyond fires and floods and affect as much as 30 percent of a company's mission-critical infrastructure. Cooling and power are key points of exposure and increase as equipment density does.

#### 2. Unnecessary risk

When systems are housed in less-than-optimal settings, or are in remote and unsupervised locations, any error causes downtime. Yet, it's not practical to have someone babysitting the servers. We offer more effective ways to keep track of your equipment.

#### 3. Sabotage

Regardless of the probability, terrorism is now something each of us must plan for. Your systems can also be brought down from within if the proper security safeguards are not in place.

### WHAT'S AN ENVIRONMENTAL MONITORING SYSTEM?

Environmental-monitoring products enable you to actively monitor the conditions in your rack, server room, data center or anywhere else you need to protect critical assets. Conditions monitored include extreme temperatures, humidity, power spikes and surges, water leaks, smoke and chemical materials. With proper environmental monitoring, you're alerted to any conditions that could have an adverse effect on your mission-critical equipment. These products can also alert you to potential damage from human error, hacking or prying fingers.

Environmental monitors consist of three main elements: a base unit, probes or sensors, and network connectivity and integration. The base units may contain one or more built-in sensors, as well as ports for hooking up external probes. They also include an Ethernet port and have software for remote configuration and graphing. This software may also work with existing network management software, such as SNMP systems.

### FEATURES

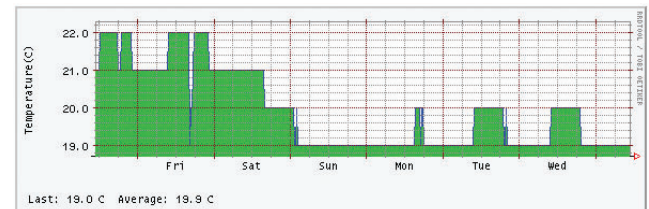
#### Measurement (see chart)

The environmental monitoring appliance displays the values measured by the attached probes, e.g. temperature, humidity, airflow, status of dry contact, door, motion detector and other sensors.

Temp Rack 03	66° F (19° C)
Humidity Rack 03	34%

#### Data collecting and graphing (see chart below)

The measurements are periodically stored in the internal memory or external storage media and displayed as graphs.



#### Alerting (see chart on facing page)

When the measured value exceeds the predefined threshold, it triggers an alert: a blinking LED on the front panel, an audible alarm, SNMP trap, email, etc. The environmental monitoring appliance can also activate an external alarm system like a siren or strobe light.

### BENEFITS OF ENVIRONMENTAL MONITORING

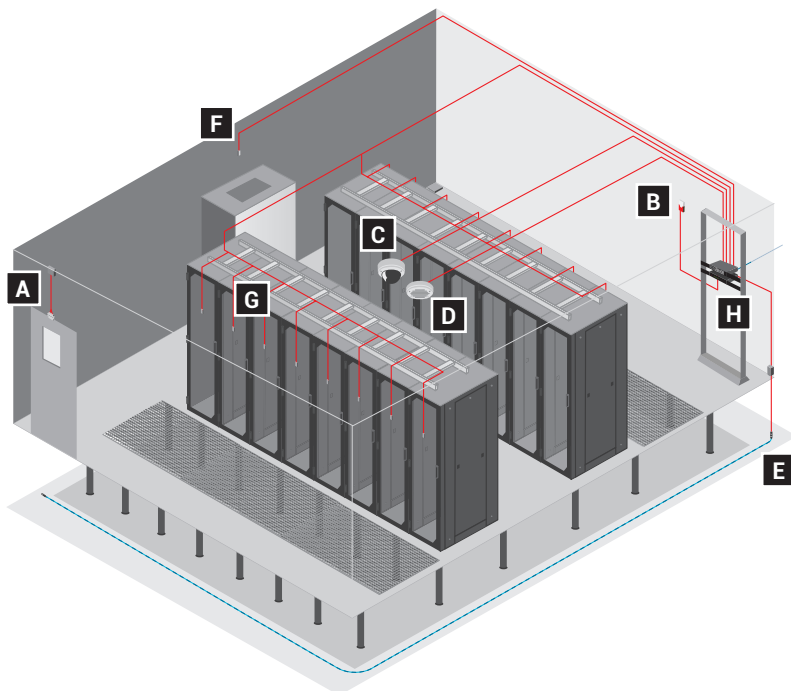
- Reduced downtime
- Increased profits
- Increased employee satisfaction

### APPLICATIONS

The Black Box AlertWerks™ System consists of SNMP-enabled, web-based monitors that alert the user to any abnormal conditions. AlertWerks monitors multiple environmental conditions, including temperature, humidity, airflow, smoke, security and voltage.



## MONITORING HUBS AND INTELLIGENT SENSORS



KEY	DESCRIPTION
A	Security
B	Siren and Strobe Light
C	Camera
D	Smoke/Fire
E	Rope Water
F	Dual Temperature Humidity
G	Temperature
H	AlertWerks Hub

## SELECTION GUIDE | ALERTWERKS SENSOR HUB FEATURES

	SERVENOR JUNIOR (EME102A-R2, EME152A)	SERVENOR 4 (EME105A, EME155A)	SERVENOR (EME108A-R2, EME158A)	SERVENOR CONTACT (EME111A-20-R2, EME111A-60-R2)	SERVENOR V4EL (EME144A-R2, EME149A-20, EME149A-60, EME149D-20, EME149D-60)	SERVENOR V4E (EME134A-R3)
<b>Features</b>						
Intelligent sensors supported (maximum)	2	4	8	8	8/500*	8/500*
Dry contacts supported (maximum)	10†	4	8	28 / 68 ‡	20/60/500*	20/60/500*
Cameras supported (maximum)	–	–	–	–	–	4
<b>Notifications</b>						
Relay control	✓	✓	✓	✓	✓	✓
Siren and strobe light	✓	✓	✓	✓	✓	✓
SNMP trap	✓	✓	✓	✓	✓	✓
E-mail	✓	✓	✓	✓	✓	✓
SMS	✓§	✓§	✓§	✓§	✓**	✓**
MMS	–	–	–	–	✓**	✓**
Phone call	–	–	–	–	✓††	✓††
Skype® call	–	–	–	–	✓	✓
FTP upload	–	–	–	–	✓	✓
Picture log	–	–	–	–	–	✓
Wakeup/shutdown	–	–	–	–	✓	✓

\*Requires expansion hubs.

†With two 5-dry contact input cables and license.

‡20 and 60 dry contacts respectively, plus up to 8 dry contacts at the standard sensor ports.

§Requires e-mail to SMS gateway.

\*\*Requires GSM USB modem.

†† Requires voice modem.



# REMOTE MONITORING AND SECURITY

## ALERTWERKS™ SERVSSENSOR V4E HUB, V4EL HUBS (PAGE 7)

### Real-time, extensive environmental and video monitoring and alerting system

- Support up to eight plug-and-play Intelligent Sensors (pages 80–81)
- Can be daisy-chained to expansion hubs, increasing the total sensor count up to 500
- V4E model also supports up to four surveillance cameras (see page 81 for the AlertWerks cameras)
- Notify you of alarms in a variety of ways, including e-mail, SNMP and text messages
- Can also monitor up to 80 SNMP devices
- Monitors external devices via SNMP or IP “ping”
- Manageable through an easy-to-use Web interface
- Full SNMP v1, v2 and v3 compliance
- Include a combination temperature/humidity sensor

The AlertWerks ServSensor V4E family enables you to integrate environmental sensors and surveillance cameras into one seamless remote monitoring system that watches over your premises. Each ServSensor supports up to eight AlertWerks Intelligent Sensors (pages 79–81). Sensors automatically configure and go on-line, ready to report any status change. Choose from a wide variety of sensors, including temperature, humidity, water, airflow, motion and voltage.

## ALERTWERKS™ SERVSSENSOR HUBS (PAGE 7)

### Function as a central hub for your AlertWerks

#### Intelligent Sensors

- Use them for remote monitoring of a wide range of areas from server rooms to factory floors
- Feature four or eight RJ-45 ports; AlertWerks Intelligent Sensors sold separately
- Work with a wide range of sensors: temperature, humidity, water, airflow, smoke, motion, security, dry contact and AC and DC voltages
- Use sensors in any combination

## ALERTWERKS™ SERVSSENSOR JUNIOR (PAGE 8)

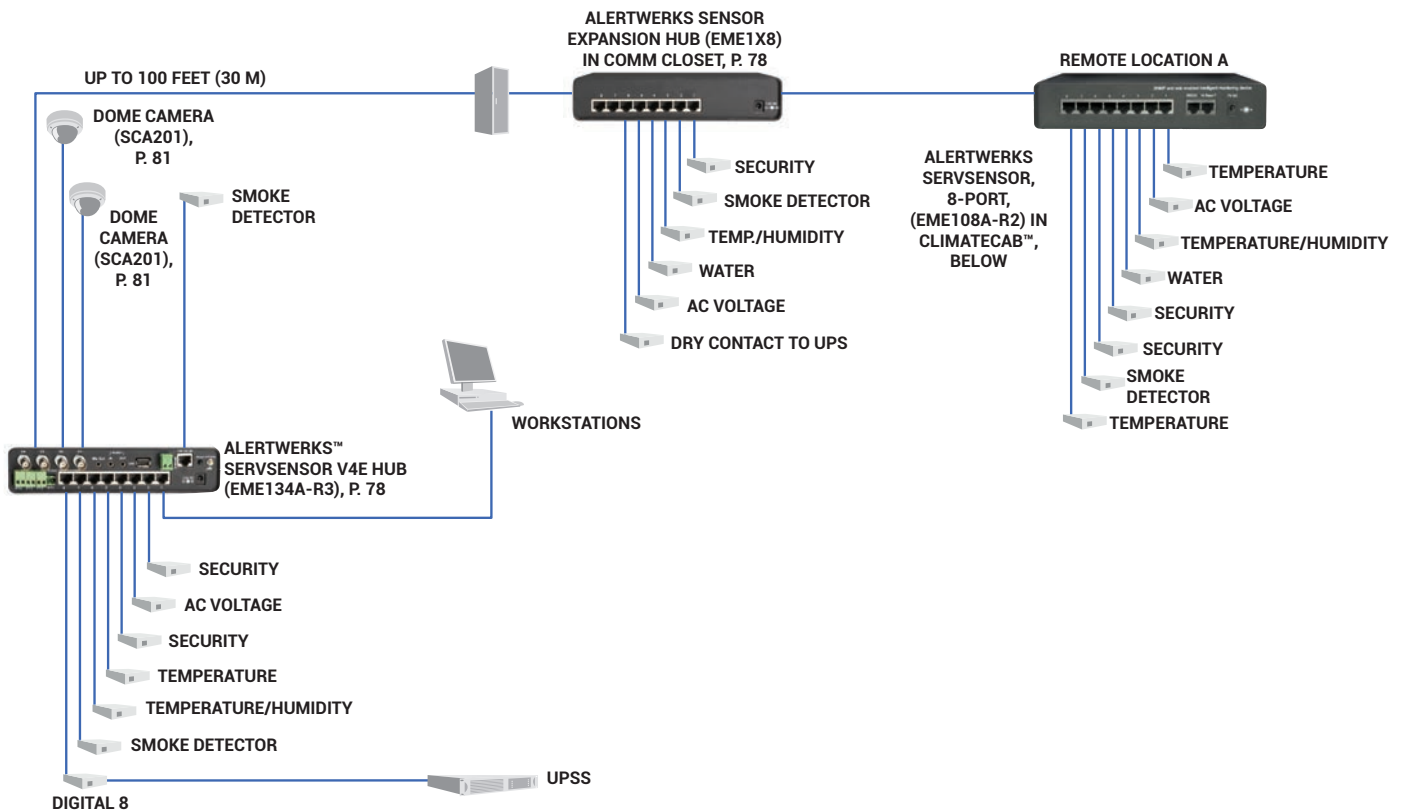
### Ideal for limited areas, such as wiring closets

- Functions as a central hub for up to two AlertWerks Intelligent Sensors
- Java™ based Web user interface enables you to access the hub over any IP network—even the Internet
- PoE model features 802.3af Power over Ethernet

## ALERTWERKS™ SERVSSENSOR CONTACT (PAGE 8)

### Safeguard equipment and devices that use dry contact outputs to send alarm signals

- Functions as a central hub for your AlertWerks Intelligent Sensors
- Adaptable to a wide range of devices, such as UPSs, other remote monitoring systems and building management systems
- Supports customized sensors for conditions like motion, gas and sound
- Sends alerts via email or SNMP



# REMOTE MONITORING AND SECURITY



EME134A-R3



EME108A-R2

## ALERTWERKS™ SERVSSENSOR V4E HUB, V4EL HUBS

<b>Audio</b>	Sampling Rate: 8 kHz
<b>Configuration</b>	Via Web browser (HTTP / HTTPS)
<b>Encryption</b>	SL 128 bit (HTTPS), SNMPv3
<b>Environmental</b>	Temperature: 32 to 131° F (0 to 55° C); Humidity: 20 to 80%, noncondensing; Altitude: 0 to 9842 ft. (0 to 3000 m)
<b>Memory</b>	EME134A-R3: 64 MB SDRAM, 128 MB NVRAM; EME144A-R2, EME149A-20, EME149D-20, EME149A-60, EME149D-60: 128 MB SDRAM, 128 MB NVRAM
<b>Operating System</b>	Embedded Linux
<b>Protocols Supported (Client)</b>	DHCP, DNS, SMTP, (S) NTP, SNMP
<b>Video</b>	EME134A-R3: Sampling resolution: Up to 640 x 480 dpi Frame rate: Up to 30 fps Color depth: Up to 16 bit Streaming refresh rate: Up to 15 fps @ 320 x 240 dpi
<b>CE Approval</b>	Yes
<b>Connectors</b>	All: (8) RJ-45 sensor, (1) RJ-45 10/100BASE-TX Ethernet, (1) USB Type A, (1) 2-pin RS-485; EME134A-R3 also: (4) BNC F video, (3) 3.5-mm audio jacks, (4) 2-pin RS-485 PTZ. (1) DB9 M RS-232/V.24 console port; EME149A-20, EME149D-20 also: (20) 2-pin dry contacts; EME149A-60, EME149D-60 also: (60) 2-pin dry contacts
<b>Power</b>	EME134A-R3, EME144A-R2, EME149A-20, EME149A-60: Autosensing 100–240 VAC, 47–63 Hz external power supply; EME149D-20, EME149D-60: 40–60-VDC terminal block
<b>Size</b>	EME134A-R3: 1.8"H x 10.9"W x 5.4"D; EME144A-R2: 1.8"H x 8.5"W x 5.4"D; EME149A-20, EME149A-60: 1.8"H x 17.2"W x 5"D; EME149D-20: 1.8"H x 17.1"W x 5.4"D; EME149D-60: 3.5"H x 18"W x 5.4"D

CATALOG #	DESCRIPTION
EME134A-R3	ServSensor V4E
EME144A-R2	ServSensor V4EL, No Video, No Dry Contacts
EME149A-20	ServSensor V4EL, No Video, with 20 Dry Contacts
EME149D-20	ServSensor V4EL, No Video, with 20 Dry Contacts, DC-Powered
EME149A-60	ServSensor V4EL, No Video, with 60 Dry Contacts
EME149D-60	ServSensor V4EL, No Video, with 60 Dry Contacts, DC-Powered
EME1X8	ServSensor Expansion Units, 8-Port Sensor Hub
EME1P8	ServSensor Expansion Units, 8-Port Relay Hub
EME1DC16	ServSensor Expansion Units, 16-Port Dry Contact Hub

## ALERTWERKS™ SERVSSENSOR HUBS

<b>Configuration</b>	Software utility for IP setup, then over Web browser
<b>Environmental</b>	Temperature: EME108A-R2, EME110A-R2, EME158A: 32 to 104° F (0 to 40° C); EME105A, EME106A, EME155A: -31 to +176° F (-35 to +80°); Humidity: EME108A-R2, EME110A-R2, EME158A: 30 to 70% noncondensing; EME105A, EME106A, EME155A: 20 to 80% noncondensing
<b>Monitoring and Alarms</b>	Via Web browser, e-mail, SNMP trap
<b>Security</b>	User/administrator password-protected login
<b>CE Approval</b>	Yes
<b>RoHS</b>	EME158A, EME105A, EME155A, EME106A
<b>Connectors</b>	EME108A-R2, EME110A-R2, EME158A: (8) RJ-45 sensor ports, (1) 10BASE-T Ethernet port; EME105A, EME106A, EME155A: (4) RJ-45 sensor ports, (1) 10BASE-T Ethernet port
<b>Power</b>	EME108A-R2–EME110A-R2: 90–260 VAC, 47–63 Hz autosensing external power supply; EME105A–EME106A: 100–240 VAC, 50–60 Hz autosensing external power supply; EME155A, EME158A: 100–240 VAC, 50–60 Hz autosensing external power supply or via 802.3af PoE
<b>Size</b>	EME108A-R2–EME110A-R2, EME158A: 1.8"H x 9.2"W x 5.4"D (4.6 x 23.4 x 13.8 cm); EME105A–EME106A, EME155A: 1.8"H x 8.5"W x 5.4"D (4.6 x 21.6 x 13.7 cm)

CATALOG #	DESCRIPTION
EME108A-R2	ServSensor, 8-Port, No Sensor
EME158A	ServSensor, 8-Port with PoE, No Sensor
EME109A-R2	ServSensor, 8-Port, (1) Temperature Sensor (Kit)
EME110A-R2	ServSensor, 8-Port, (1) Dual Temperature and Humidity Sensor (Kit)
EME105A	ServSensor 4, 4-Port, No Sensor
EME155A	ServSensor 4, 4-Port with PoE, No Sensor
EME106A	ServSensor 4, 4-Port, (1) Dual Temperature and Humidity Sensor (Kit)



# REMOTE MONITORING AND SECURITY



EME102A-R2



EME111A-20-R2

## ALERTWERKS™ SERVSSENSOR JUNIOR

<b>Configuration</b>	Software utility for IP setup, then over web browser
<b>Environmental</b>	Temperature: 32 to 104° F (0 to 40° C); Humidity: 30 to 70% noncondensing;
<b>Monitoring and Alarms</b>	EME134A-R3: 64 MB SDRAM, 128 MB NVRAM; EME144A-R2, EME149A-20, EME149D-20, EME149A-60, EME149D-60: 128 MB SDRAM, 128 MB NVRAM
<b>Security</b>	User/administrator password-protected login
<b>Protocols Supported (Client)</b>	DHCP, DNS, SMTP, (S) NTP, SNMP
<b>CE Approval</b>	Yes except EME1DC-UPG
<b>RoHS</b>	EME102A-R2-EME104A-R2, EME152A-EME154A
<b>Connectors</b>	(2) RJ-45 sensor ports; (1) 10/100 Ethernet port
<b>Power</b>	EME102A-R2-EME104A-R2: 90-260 VAC, 47-63 Hz autosensing external power supply; EME152A-EME154A: 100-240 VAC, 50-60 Hz autosensing external power supply or via 802.3af PoE
<b>Size</b>	1.3"H x 4.5"W x 2.5"D (3.2 x 11.4 x 6.4 cm)

CATALOG #	DESCRIPTION
EME102A-R2	2-Port, No Sensor
EME103A-R2	2-Port, (1) Temperature Sensor (Kit)
EME104A-R2	2-Port, (1) Dual Temperature and Humidity Sensor (Kit)
EME152A	2-Port, No Sensor, with PoE
EME153A	2-Port, (1) Temperature Sensor (Kit), with PoE
EME154A	2-Port, (1) Dual Temperature and Humidity Sensor (Kit), with PoE
EME1DC-015	Dry Contacts for ServSensor Junior, 5 Inputs, 15 ft. (4.5 m) (Requires EME1DC-UPG, below)
EME1DC-UPG	Activation Key for ServSensor Junior Dry Contacts

## ALERTWERKS™ SERVSSENSOR CONTACT

<b>Configuration</b>	Software utility for IP setup, then over Web browser
<b>Environmental</b>	Temperature: 32 to 131° F (0 to 55° C); Humidity: 20 to 80%, noncondensing
<b>Monitoring and Alarms</b>	Via web browser, email, SNMP trap
<b>Security</b>	User/administrator password-protected login
<b>Protocols Supported (Client)</b>	DHCP, DNS, SMTP, (S) NTP, SNMPv1
<b>Connectors</b>	EME111A-20-R2, EME112A-20-R2, EME113A-20-R2: (8) RJ-45 sensor ports; (20) dry contacts; (1) RJ-45 10BASE-T Ethernet port; EME111A-60-R2-EME113A-60: (8) RJ-45 sensor ports; (60) dry contacts; (1) RJ-45 10BASE-T Ethernet port
<b>Power</b>	100-240 VAC, 47-63 Hz autosensing external power supply
<b>Size</b>	1.7"H x 18"W x 5"D (4.2 x 45.7 x 12.7 cm)

CATALOG #	DESCRIPTION
EME111A-20-R2	8-Port, 20 Dry Contacts with No Sensors
EME112A-20-R2	8-Port, 20 Dry Contacts with Temperature Sensor
EME113A-20-R2	8-Port, 20 Dry Contacts with Temperature/Humidity Sensor





EME1FC-NTSC

## ALERTWERKS™ CAMERAS

### High-resolution 1/3" Sony™ CCD cameras

- Dome cameras feature remote pan and tilt; universal-mount cameras are stationary

<b>Audio</b>	Sampling Rate: 8 kHz
<b>Engine</b>	All models: Image sensor: Type: 1/3" Interline CCD; Min. illumination: 0.5 Lux / F1.2; Picture elements: 640(H) x 480(V); Dome models: S/N ratio: 45dB or more (AGC off)
<b>Environmental</b>	Temperature: 32 to 104° F (0 to 40° C); Humidity: 10–80% relative humidity, noncondensing
<b>Opticals</b>	Lens type: fixed; Focal length: 3.6 mm; Viewing angle: 92°; Video resolution: 330 TV lines; Features: auto white balance, electronic iris 1/50 to 1/100,000; P/T: Pan movement: 0 to 330°; Tilt movement: 0 to 80°
<b>Video Standard</b>	SCA201, EME1FC-NTSC: NTSC; SCE201, EME1PC-PAL: PAL
<b>CE Approval</b>	Yes
<b>Interface</b>	Standard BNC or RCA (for best results, use BNC connectors and RG-6 coaxial cable)
<b>Connectors</b>	All models: Video: (1) BNC M Composite video, (1) Power input; SCA201, SCE201: Also have (1) pan/tilt terminal block
<b>Power</b>	All models: 9-VDC external power supply; EME1FC-NTSC, EME1FC-PAL: IEC adapter and EU, U.K., U.S., or Australia power cord
<b>Size</b>	SCA201, SCE201: 4.2"H x 4.5"W (10.7 x 11.5 cm); EME1FC-NTSC, EME1FC-PAL: 2.6"H x 3.5" dia. (6.5 x 8.8 cm)
<b>Weight</b>	1.1 lb.(0.5 kg)

CATALOG #	DESCRIPTION
EME1FC-NTSC	Universal Mount Camera
SCA201	PT Dome Camera



EME1T1SNMP



EME1TWRSNMP

## ALERTWERKS™ TEMPERATURE SENSORS

### Ensures a correct temperature reading up to 100 feet

- Never needs calibration
- Includes (1) plastic mounting clip

CATALOG #	DESCRIPTION
EME1T1SNMP	Temperature probe with 1-ft. (0.3-m) cable
EME1TWRSNMP	Temperature probe with 15-ft. (5-m) cable



EMERW-020-R2

## ALERTWERKS™ WATER SENSORS

### Alerts you to water in your data center

- Accurate enough to measure distilled water

CATALOG #	DESCRIPTION
<b>ALERTWERKS SPOT WATER SENSORS</b>	
EME1W1-015	15-ft. (4.5-m) Cable
EME1W1-060	60-ft. (18.2-m) Cable
EME1W1-100	100-ft. (30.4-m) Cable
<b>ALERTWERKS ROPE WATER SENSOR</b>	
EMERW-020-R2	20-ft. (6.0-m) Cable
EMERWE-010-R2	10-ft. (3.0-m) Extension



EME1FL-015

## ALERTWERKS™ ULTRASONIC FUEL LEVEL SENSOR

### Monitors liquid levels in a tank

- Suitable for many liquids including water, diesel, gasoline and waste
- Works with many different tank sizes and shapes with programmable tank dimensions
- Normal, low, and critical alerting
- Low-profile design, industry standard SAE-5 stud mounting pattern

CATALOG #	DESCRIPTION
EME1FL-015	AlertWerks Ultrasonic Fuel Level Sensor



EME1RF-003

## ALERTWERKS™ ROPE FUEL SENSOR, 3-METER

### Detects gasoline and other liquid hydrocarbon fuels, including diesel, jet fuel, and kerosene

- Does not respond to the presence of water

CATALOG #	DESCRIPTION
EME1RF-003	AlertWerks Rope Fuel Sensor, 3-Meter



# REMOTE MONITORING AND SECURITY



## ALERTWERKS™ AIRFLOW SENSOR

Monitors airflow remotely

- Thermistor sensor
- On/off alarm signal for airflow
- Two LEDs indicate the status

CATALOG #	DESCRIPTION
EME1F1-005-R2	5-ft. (1.5-m) Cable



## ALERTWERKS™ 4-20 mA CONVERTER

Add a third-party, industrial sensor to AlertWerks ServSensor hubs

- Enables you to communicate with equipment in industrial settings

CATALOG #	DESCRIPTION
EME1C1-005	4-20 mA Converter



## ALERTWERKS™ PHOTOELECTRIC SMOKE DETECTOR

Adept at detecting smoldering fires

- More effective than ionization smoke detectors at sensing smoldering fires
- Auto resets when smoke clears

CATALOG #	DESCRIPTION
EME1S2-005	5-ft. (1.5-m) Cable



## ALERTWERKS™ DRY-CONTACT SENSORS

Open/closed contact switch indicates Alarm or Normal

- Input voltage range of 0 to 5 VDC

CATALOG #	DESCRIPTION
EME1K1-015	15-ft. (4.5-m) Cable
EME1K1-060	60-ft. (18.2-m) Cable



## ALERTWERKS™ MOTION DETECTION SENSOR

Detects motion in a 60° angle

- Detection speed of 0.5–9.8 feet per second (0.15–3 m/sec)
- Temp. range of -4 to +144° F (-20 to +50° C)

CATALOG #	DESCRIPTION
EME1M1-005-R2	5-ft. (1.5-m) Cable



## ALERTWERKS™ SIREN AND STROBE LIGHT

Siren sounds at 100 ± 3 dB at 100 cm

- Maximum cable runs of 1000 feet (304.8 m)
- Can be triggered by any other sensor connected to the ServSensor hub

CATALOG #	DESCRIPTION
EME1SS-005	5-ft. (1.5-m) Cable



## ALERTWERKS™ VOLTAGE SENSORS

For use with AlertWerks sensor hubs

- AC Voltage Sensor detects voltage from 50 to 250 VAC
- DC Voltage Sensor is user programmable

CATALOG #	DESCRIPTION
EME1A1-005	AC, 5-ft. (1.5-m) Cable
EME1D1-005-R2	DC, 5-ft. (1.5-m) Cable



## ALERTWERKS™ DIGITAL I/O SENSORS

Provides eight dry contacts on one sensor port

CATALOG #	DESCRIPTION
EME1J8-005	(8) Dry Contacts with 5-ft. (1.5-m) Cable
EME1KJ8-005	(2) RJ-45 to (8) Dry Contacts with 5-ft. (1.5-m) Cable



## ALERTWERKS™ RACKMOUNT KITS

Convenient mounting of AlertWerks Sensors

CATALOG #	DESCRIPTION
EMEDIN	Rackmount DIN Rail
EMEDRMK	Dual Rackmount Bracket
EMESDIN	Split Rackmount DIN Rail Bracket





EME1TH2-005

## ALERTWERKS™ DUAL TEMPERATURE/HUMIDITY SENSORS

### Monitor temperature and humidity

- Measure temperature from -40 to +167° F (-40 to +75° C) in 1° F increments
- Measure 0 to 100% relative humidity

CATALOG #	DESCRIPTION
EME1TH1-001	Standard
EME1TH2-005	Remote
EME1TH3-015	Waterproof



EME1T2-005

## ALERTWERKS™ TEMPERATURE SENSORS

### Monitor temperatures remotely

- Never need calibration
- Measurement range of -67 to +167° F (-55 to +75° C) with 1° F resolution
- Measurement accuracy of  $\pm 0.9^\circ$  F from +14 to +167° F (-10 to +75° C)

CATALOG #	DESCRIPTION
EMEDTEMP	Daisychainable, Single
EMEDTEMP4	Daisychainable, 4-Pack
EMEDTEMP8	Daisychainable, 8-Pack



EME1Y1

## ALERTWERKS™ SECURITY SENSORS/CONTACTS

### Monitor doors remotely

- Disconnect alarm alerts you when doors to secure areas have been opened
- Open/closed contact switch indicates Alarm or Normal

CATALOG #	DESCRIPTION
EME1Y1-015	15-ft. (4.5-m) Cable
EME1Y1-060	60-ft. (18.2-m) Cable



EME1P20-005

## ALERTWERKS™ POWER SWITCHES

### Control electric power over the Internet or local IP network

- Metal oxide varistors and snubber circuits provide protection from electrical disturbance
- Monitors power and load
- Disconnect alarm sends a signal back to the sensor hub if the unit is unplugged
- Includes a 5-ft. (1.5-m) CAT5e cable, which can be replaced with up to 100 feet of CAT5e for longer distances

CATALOG #	DESCRIPTION
EME1P10-005	110V, Normally Open
EME1P2C-005	220-V, Normally Closed
EME1P20-005	220-V, Normally Open
EME1PDCC-005	48 VDC, Normally Closed
EME1PDCO-005	48 VDC, Normally Open



EME120-PS

## ALERTWERKS™ POWER ADAPTERS

### Work with all AlertWerks ServSensor hubs

- Use the EME120-PS as a spare AC power supply.
- Use the EME100-DC with telecom power systems.

CATALOG #	DESCRIPTION
EME120-PS	100–240 VAC to 7.5 VDC, 3 Amp, IEC Adapter
EME100-DC	40–60 VDC to 7.5 VDC

