

# SuperClear® IPS LED Monitor with Full Ergonomics

5:4 Aspect Ratio with 1280x1024 Resolution

**VG939Sm**



Designed for legacy and customized applications that require a 5:4 aspect ratio, the ViewSonic VG939Sm display with 1280x1024 resolution and SuperClear IPS panel technology delivers stunning front of screen performance. Equipped the ViewSonic's unique ViewMode feature, this display provides intuitive presets that deliver optimized screen performance for different applications. With a compact square shape, this 19" display can be used as a countertop monitor in retail and public environments with space constraints

## **Key Features:**

5:4 aspect ratio and 1280x1024 native resolution for legacy applications

Ergonomic swivel, pivot, and height-adjustable design for maximum comfort and productivity

DVI and VGA inputs for flexible connectivity

ViewMode technology delivers superior color rendering and intuitive settings

SuperClear image enhancement technology for wide-angle viewing

## **Designed for:**

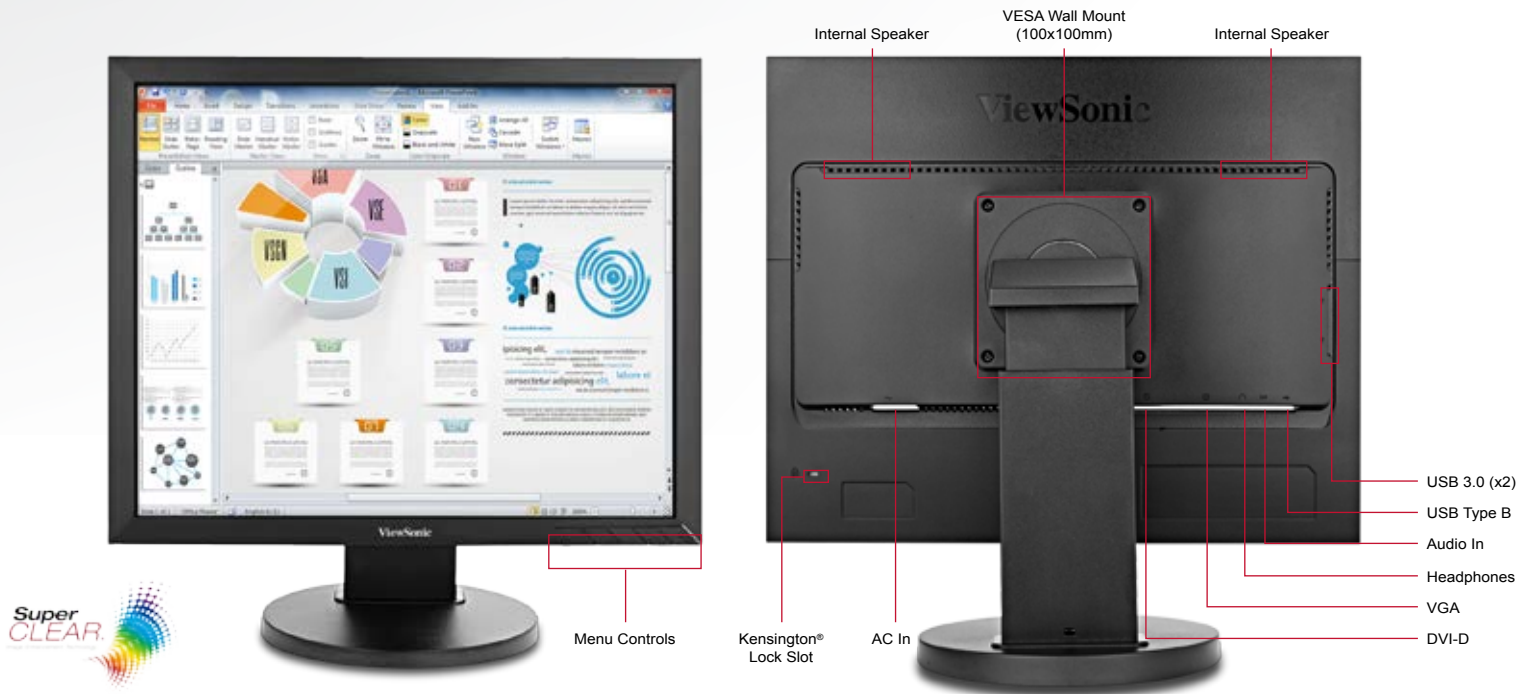
Government

Business

Education

# SuperClear® IPS LED Monitor with Full Ergonomics

**VG939Sm**



## Specifications

<b>LCD PANEL</b>	Type	Color a-Si TFT Active Matrix IPS
	Display Area	14.8" horizontal x 11.8" vertical; 19" diagonal
	Optimum Resolution	1280x1024
	Brightness	250 cd/m2 (typ.)
	Contrast Ratio	1000:1 (typ.)
	Dynamic Contrast Ratio	20,000,000:1
	Viewing Angles	178° horizontal, 178° vertical
	Colors	16.7M (true 8-bit)
	Response Time	14ms (GTG)
	Backlight	White-light LED
Backlight Life	30,000 hours (min.)	
Panel Surface	Anti-glare, hard-coating (3H)	
<b>VIDEO INPUT</b>	Digital	VGA, DVI
	Frequency	Fh: 24~82kHz, Fv: 50~75Hz
	Sync	Separate Sync, Composite Sync, Sync on Green
<b>AUDIO OUTPUT</b>	Speakers	2-watt (x2)
<b>COMPATIBILITY</b>	PC	Up to 1280x1024 non-interlaced
	Mac®	Up to 1280x1024
<b>CONNECTOR</b>	Video In	VGA, DVI-D
	Audio In	3.5mm mini jack
	USB	USB 3.0 (x2), USB Type B
	Power	Internal Power Board, 3-pin plug (CEE22)
<b>CONTROLS</b>	Front Panel Buttons	Power, 1, Up, Down, 2
	OSD	Auto Image Adjust, Contrast/Brightness, Input Select, Audio Adjust, Color Adjust, Information, Manual Image Adjust, Setup Menu, Memory Recall (See user guide for complete OSD functionality)

<b>ERGONOMICS</b>	Tilt	Forward 5° / Back 25°
	Swivel	360°
	Pivot	90°
	Height Adjust	0~100 mm
<b>POWER</b>	Voltage	AC 100~240V (universal), 50 / 60Hz
	Consumption	18W (typ.) / 20W (max.)
	Optimize	16W (typ.)
	Conserve	15W (typ.)
<b>OPERATING CONDITIONS</b>	Temperature	32~104° F (0~40° C)
	Humidity	20~90% (non-condensing)
<b>DIMENSIONS (W x H x D)</b>	Physical with Stand	16.4 x 14.8 x 8.0 in. / 416.2 x 376 x 204.3 mm
	Physical without Stand	16.4 x 13.4 x 2.0 in. / 416.2 x 341.2 x 49.9 mm
	Packaging	18.7 x 16.3 x 6.5 in. / 476 x 414 x 165 mm
<b>WEIGHT</b>	Net with Stand	9.6 lb. / 4.3 kg
	Net without Stand	6.1 lb. / 2.75 kg
	Gross	13.3 lb. / 6.0 kg
<b>REGULATIONS</b>		ENERGY STAR, CCC, CEL, UL/cUL, FCC (ICES003), EPEAT, Mexico energy
<b>RECYCLE/DISPOSAL</b>		Please dispose of in accordance with local, state, or federal laws
<b>WALL MOUNT</b>	VESA®	100 x 100 mm
<b>WARRANTY</b>		Three-year limited warranty on parts, labor and backlight

## What's in the box?

VG939Sm monitor, Power cable, VGA cable, DVI cable, audio cable, Quick Start Guide, ViewSonic Wizard CD (User Guide)

