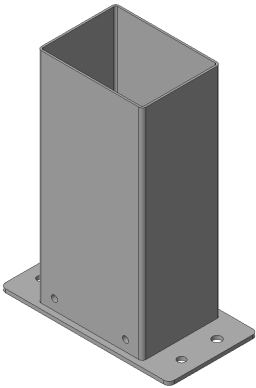


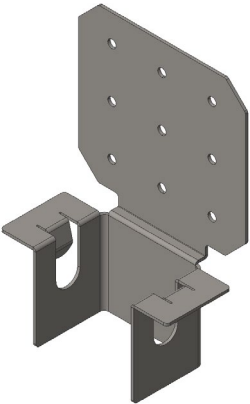




Pole
Qty. 2



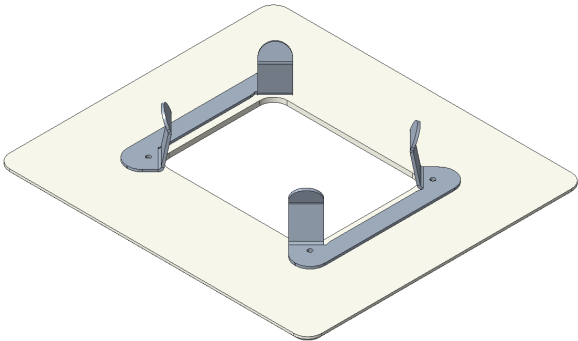
Lower Pole
Bracket
Qty. 1



Upper Pole
Bracket
Qty. 1

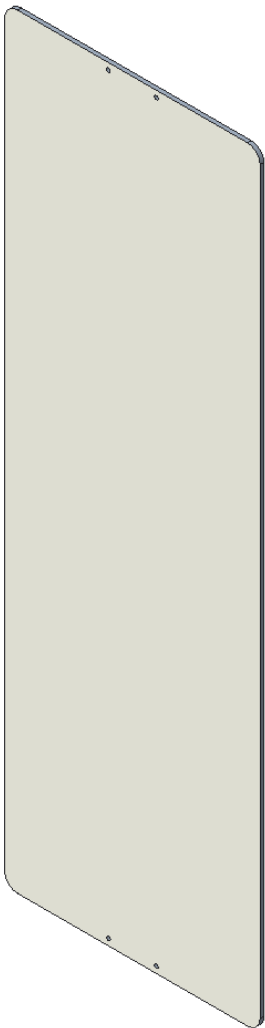


Coupler
Qty. 1

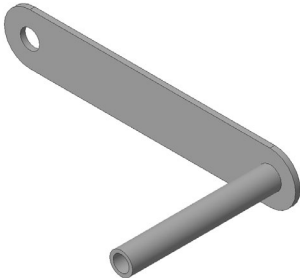


Escutcheon
Plate
Qty. 1

Hardware	
Qty.14	Screw, M4x6, Pan Head, Cross Recess



Signage Board
Qty. 1



Signage Bracket
Qty. 4



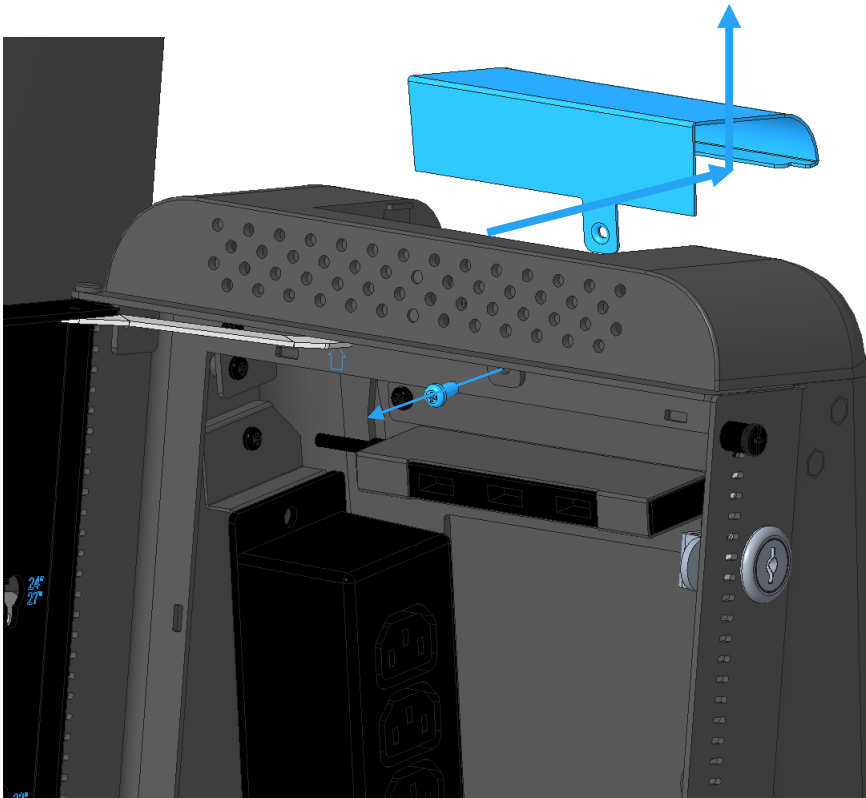
L-Key
Qty. 1

Hardware	
Qty.6	Screw, M5x15, Button Head, 3mm Hex Drive

1

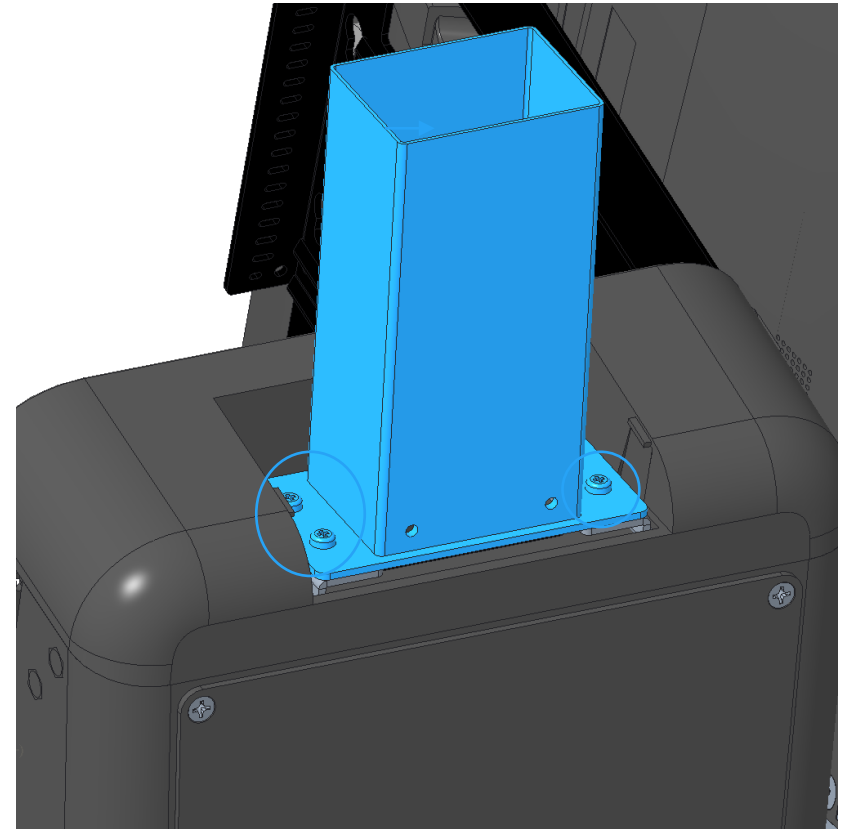
Ceiling Pole Kit

Note: Kit is not recommended for use with countertop installations.



Before installing ceiling pole kit, start with UM600658 steps **1-25**.
Remove screw as shown.
Slide ceiling pole cover back and up to remove.

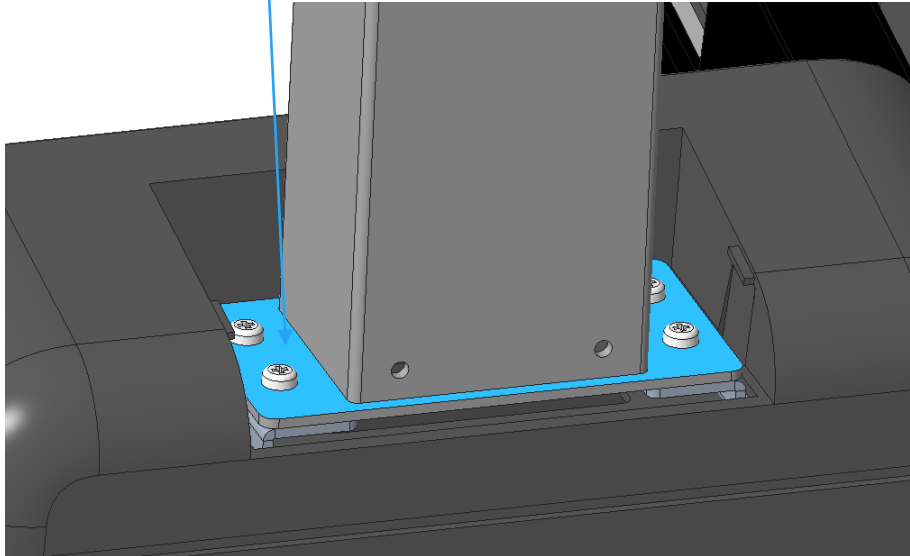
2



Install lower pole bracket to top of stand using four screws from hardware bag.

3

Top of lower pole bracket flange

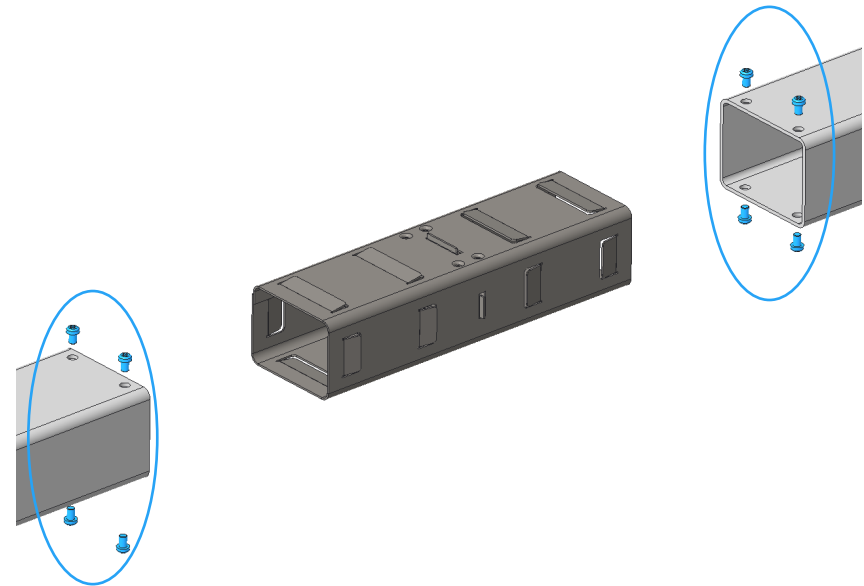


Measure the required pole length.

For installations with finished ceiling, measure from the top of the lower pole bracket flange to the bottom of the finished ceiling and add $\frac{1}{2}$ " (13mm).

For installations with exposed framing, measure from the top of the lower pole bracket flange to the bottom of the framing member and subtract $\frac{1}{2}$ " (13mm).

4

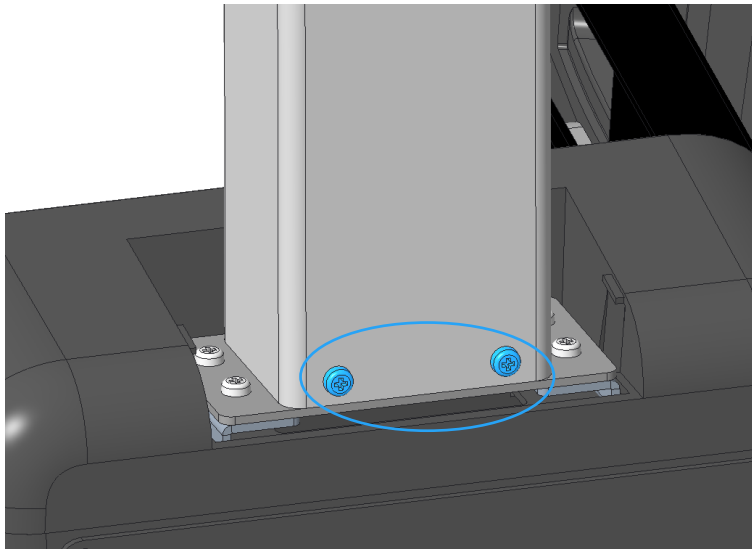
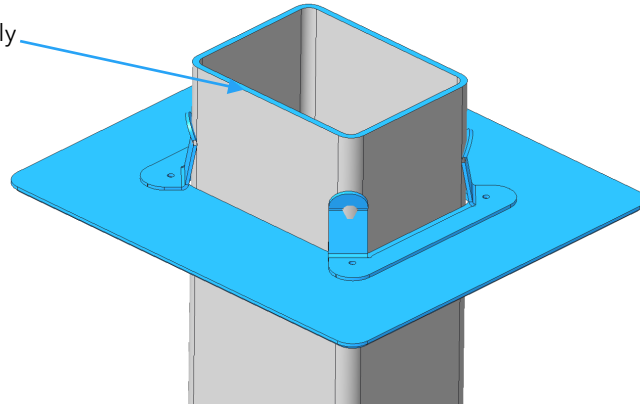


For pole length < 63" (1.6m), cut pole to required length using hacksaw.

For pole length > 63" (1.6m), join two pole sections together using coupler. Assemble coupler into one end of first pole. Fasten with four screws from hardware bag. Assemble second pole to coupler and fasten with four additional screws. Cut pole assembly to required length using hacksaw.

5

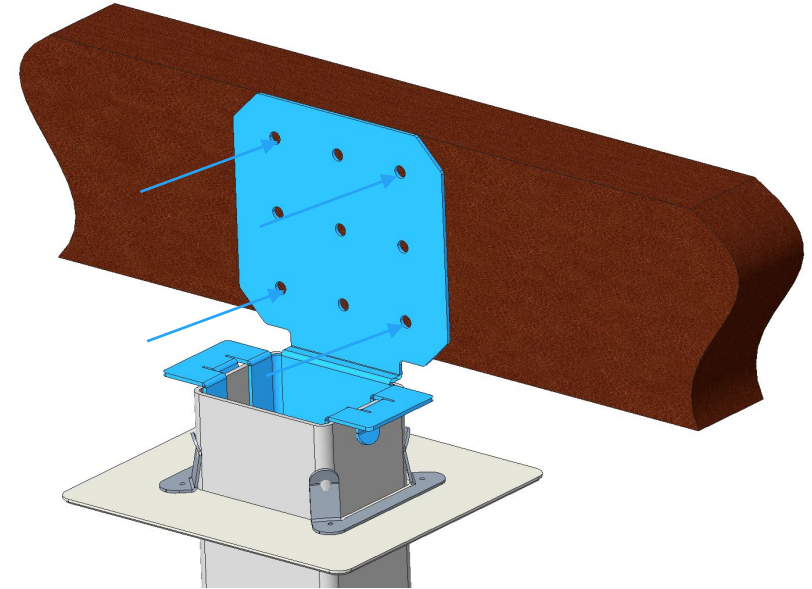
Cut end of pole assembly



For installations with finished ceiling, slide the escutcheon plate onto the top (cut) end of the pole assembly.

Attach the lower (uncut) end of the pole assembly to the lower pole bracket using two screws from the hardware bag.

6



For installations with finished ceiling, cut a 65mm x 75mm (2.5"x3.0") clearance hole in the ceiling.

The upper pole bracket must be attached to a framing member in the ceiling. Install additional framing/blocking as needed, ensuring that pole will be plumb (vertical) when assembled.

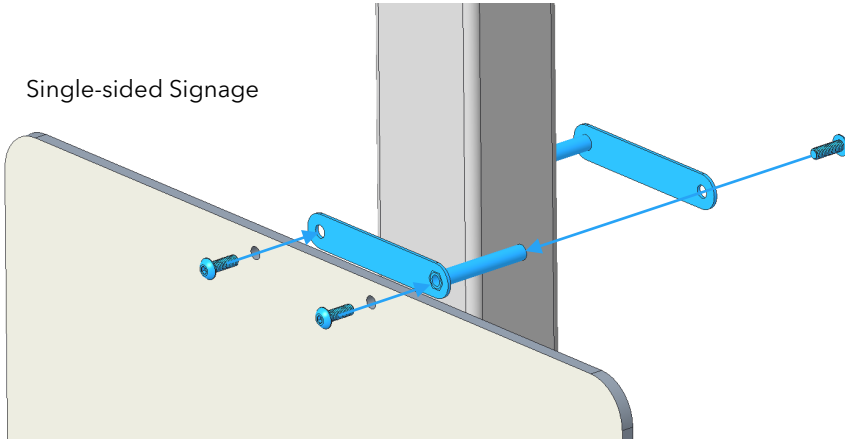
Assemble the upper pole bracket to the top end of the pole assembly.

Attach the upper pole bracket to a framing member using a minimum of four nails or screws with diameter at least .16" (4mm).

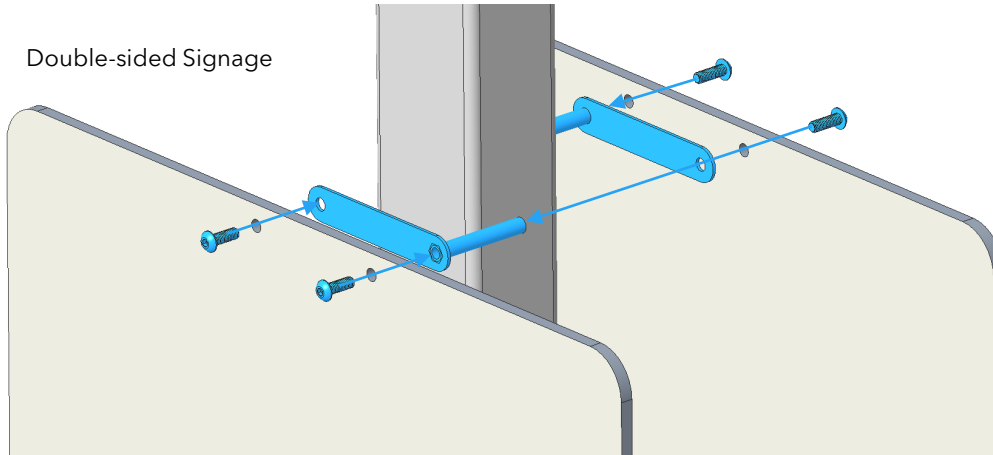
7

Ceiling Signage Kit (Optional)

Single-sided Signage



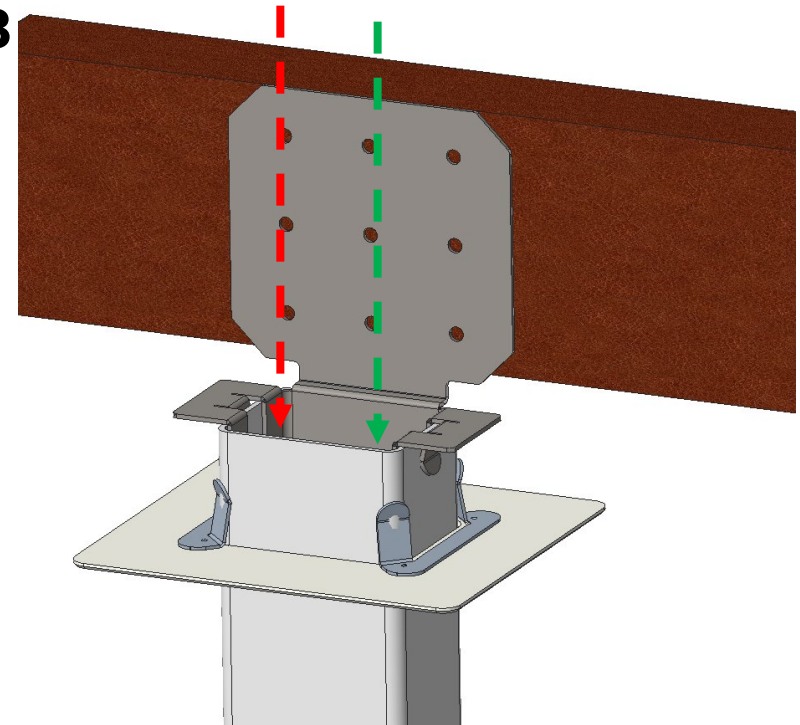
Double-sided Signage



Signage can be installed single sided or double sided.

Attach signage to pole at desired height using screws and brackets from signage kit. For single-sided, use two brackets and three screws at each end of signage board. For double-sided, use two brackets and four screws at each end of signage board.

8



Install power and LAN outlets within 0.7m (28") of upper pole bracket, if needed.

For E534462 model, power cable is not included. Purchase a 5m C13-style power cable for your region. For E989314, power cables are included for NA/EU/UK regions. Route **power** and **LAN** cables down through pole.

For double-sided floor installations, route two sets of each cable required through a single pole.

For finished ceiling installations, slide escutcheon plate up to cover rough opening in finished ceiling.

Return to UM600658 step **26** to complete installation.

Learn more about Elo at [EloTouch.com](https://elotouch.com).

Americas

Tel +1 408 597 8000
EloSales.NA@elotouch.com

Europe (EMEA)

Tel +32 16 930 136
EMEA.sales@elotouch.com

Asia Pacific

Tel +86 (21) 3329 1385
EloAsia@elotouch.com

The information in this document is subject to change without notice. Elo Touch Solutions, Inc. and its Affiliates (collectively “Elo”) makes no representations or warranties with respect to the contents herein, and specifically disclaims any implied warranties of merchantability or fitness for a particular purpose. Elo reserves the right to revise this publication and to make changes from time to time in the content hereof without obligation of Elo to notify any person of such revisions or changes.

No part of this publication may be reproduced, transmitted, transcribed, stored in a retrieval system, or translated into any language or computer language, in any form or by any means, including, but not limited to, electronic, magnetic, optical, chemical, manual, or otherwise without prior written permission of Elo Touch Solutions, Inc.

Elo, the Elo logo and Wallaby are either trademarks or registered trademarks of Elo Touch Solutions, Inc.