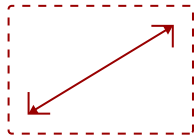


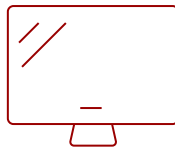
VA2709M - 27" 1080P IPS 100HZ VARIABLE REFRESH RATE MONITOR WITH HDMI, VGA

## Key Features

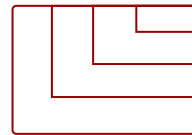
- Accurate from All Angles: SuperClear® IPS Technology
- Frameless Design
- Variable Refresh Rate
- Versatile Connectivity
- Full HD 1080p Resolution
- Optimized View Settings
- VESA-Compatible Mount
- Enhanced Viewing Comfort
- Dual Integrated Speakers
- 3-Year Limited Warranty



27  
DISPLAY



IPS  
PANEL



1920 X 1080  
RESOLUTION

## Product Description

Featuring enhanced wide-angle viewing, stunning resolution and flexible connectivity options, the ViewSonic® VA2709m monitor is a great addition to any workspace. This 27" VA2709m monitor comes with SuperClear® IPS panel technology so you can experience stunning brightness and contrast at nearly any viewing angle. With a minimalist edge-to-edge screen and a 3-sided frameless bezel, you can easily create a seamless multi-monitor setup. Connect laptops, PCs, gaming consoles and other multimedia devices using the HDMI port. And with powerful features like flicker-free technology and a blue light filter, you can work for longer with less strain. Enjoy a 3 year limited warranty, industry-leading pixel performance policy and so much more with the ViewSonic VA2709m monitor.

## Specifications

### More Information

UPC

766907024760

Screen Size

27

<b>Viewable Area (in.)</b>	27
<b>Panel Type</b>	IPS
<b>Display Resolution</b>	1920 x 1080
<b>Display Resolution</b>	Full HD (1920x1080)
<b>Static Contrast Ratio</b>	1,300:1
<b>Dynamic Contrast Ratio</b>	50,000,000:1
<b>Light Source</b>	LED
<b>Brightness</b>	250 cd/m2
<b>Colors</b>	16.7M
<b>Color Space Support</b>	8 bits
<b>Aspect Ratio</b>	16:9
<b>Response Time (Typical GTG)</b>	4ms
<b>Response Time (MPRT)</b>	1ms
<b>Viewing Angles</b>	178° horizontal, 178° vertical
<b>Backlight Life (Hours)</b>	30,000
<b>Panel Surface</b>	Anti-Glare type, Hard-coating (3H), Haze 25%
<b>PC Resolution (max)</b>	1920 X 1080
<b>Mac® Resolution (max)</b>	1920 X 1080
<b>3.5mm Audio Out</b>	1
<b>VGA</b>	1
<b>HDMI 1.4 In</b>	1
<b>Internal Speakers</b>	2W (x2)
<b>Eco Mode (Conserve)</b>	22w
<b>Eco Mode (optimized)</b>	26w
<b>Consumption (typical)</b>	30w
<b>Consumption (max)</b>	33w
<b>Voltage</b>	AC 100-240V (universal), 50-60Hz
<b>Stand-by</b>	0.3w
<b>Power Supply</b>	External
<b>Cable Organization</b>	No
<b>Kensington Lock Slot</b>	1
<b>Physical Controls</b>	Key 1 (favorite), Key 2, Key 3, Key 4, Key 5 (power)
<b>On Screen Display</b>	Input Select, Audio Adjust, ViewMode, Color Adjust, Manual Image Adjust, Setup Menu
<b>Temperature</b>	32-104° F (0 - 40° C)
<b>Humidity (non-condensing)</b>	20-90%
<b>VESA Compatible</b>	100 x 100 mm

<b>Frequency Horizontal</b>	VGA: 24 ~ 86 KHz / HDMI 1.4: 24 ~ 115 KHz
<b>Frequency Vertical</b>	VGA: 48 ~ 75 Hz / HDMI 1.4: 48 ~ 100 Hz
<b>Tilt (Forward/Back)</b>	5° / 20°
<b>Net (lbs)</b>	9.3
<b>Net Without Stand (lbs)</b>	7.9
<b>Gross (lbs)</b>	13
<b>Net (kg)</b>	4.2
<b>Net Without Stand (kg)</b>	3.6
<b>Gross (kg)</b>	5.9
<b>Packaging (in.)</b>	27.4 " (W) x 18.1 " (H) x 5.7 " (D)
<b>Physical (in.)</b>	24.2 " (W) x 18.1 " (H) x 8 " (D)
<b>Physical Without Stand (in.)</b>	24.2 " (W) x 14.3 " (H) x 1.8 " (D)
<b>Packaging (mm)</b>	695 mm (W) x 460 mm (H) x 145 mm (D)
<b>Physical (mm)</b>	615 mm (W) x 460 mm (H) x 203 mm (D)
<b>Physical Without Stand (mm)</b>	615 mm (W) x 364 mm (H) x 46 mm (D)
<b>Regulations</b>	cTUVus, FCC-B, ICES003, CEC, NRCAN, NOM, Mexico Energy
<b>Package Contents</b>	LCD Display, Power Cable, HDMI Cable, AC/DC Adapter, Quick Start Guide
<b>Recycle/Disposal</b>	Please dispose of in accordance with local, state or federal laws.
<b>Warranty</b>	Three-year limited warranty on parts, labor and backlight

UPC: 766907024760

## Contact Sales

[ViewSonic.com](http://ViewSonic.com)

888.881.8781

email: [salesinfo@viewsonic.com](mailto:salesinfo@viewsonic.com)