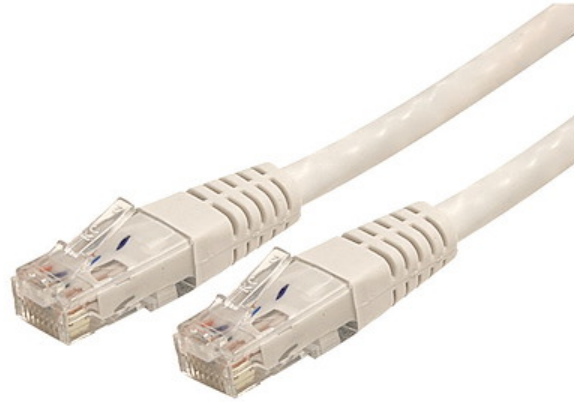


2ft CAT6 Ethernet Cable - White CAT 6 Gigabit Ethernet Wire -650MHz 100W PoE RJ45 UTP
Molded Network/Patch Cord w/Strain Relief/Fluke Tested/Wiring is UL Certified/TIA

Product ID: C6PATCH2WH



The C6PATCH2WH Cat 6 Patch Cable (2 ft) meets or exceeds all Category 6 cable specifications to ensure reliable Gigabit network connections, and features a durable white PVC jacket that enables you to color code your network cable runs as needed.

To ensure long-lasting performance, this high quality Cat 6 patch cable features molded PVC strain relief that prevents the RJ45 connector termination points from bending at sharp angles - reducing the risk of cable damage, which could decrease network performance.

Constructed of only top quality materials, this Gigabit Patch Cable delivers reliable performance and is backed by our Lifetime Warranty.

StarTech.com Cat6 cables are manufactured using high-quality copper conductors. While many cable manufacturers offer a "cheaper" cable, based on a copper-coated aluminum core, we make no compromises on quality to ensure you receive top value and performance for your network cable investment.

This Cat6 cable is constructed with 24 gauge copper wire, to support a broad range of Ethernet applications such as Power over Ethernet (PoE). Because we use a high quality copper wire, our cables easily sustain the power required for Power over Ethernet applications, whereas the inferior quality offered by copper-coated aluminum cables may be subject to insufficient power delivery, heat buildup, equipment damage and potentially, fire.

This molded patch cable offers high quality connectors comprised of 50-micron gold, to deliver optimum conductivity while eliminating signal loss due to oxidation or corrosion.

Certifications, Reports and Compatibility

Applications

- Designed for use with Gigabit networks
- Patches from hub to distribution panel
- Connects workstation to wall outlet

Features

- Constructed with top quality components
- HIGH PERFORMANCE CAT6 ETHERNET CABLE: 100% copper for error-free Multi Gigabit 1/2.5/5Gbps connections; 10Gbps up to 160'; Fluke patch cord tested to comply w/ANSI/TIA-568-2.D Category 6; ETL Verified
- POE SUPPORT: 24 AWG stranded copper conductors & UL Rated Wiring (E132276-A) supports up to 100W for PoE devices like VOIP phone & security systems; IEEE 802.3bt & DTE power compliance reduces cable heating
- QUALITY CONSTRUCTION: ETL & UL certified wire; 50-micron gold-plated connectors prevent rust/corrosion to avoid costly network downtime; High quality PVC jacket resists bending or fraying damage
- EASY INSTALLATION: 2 foot molded patch cord is easy to connect into high density panels with many cables; Compatible w/Cat5e; Available w/Snagless boots for easy wiring conduit installation
- SPECS: Length: 2ft (60cm) Color: White 650 MHz Rated Structure: 4 Pair UTP RJ45 Jacket: PVC Wire Gauge: 24 AWG Copper Wiring: ANSI/T568B ETL Verified Warranty: Lifetime

Prominence

Warranty	Lifetime
Description CDW 75 - 1st Line	StarTech.com CAT6 Ethernet Cable 2' White 650MHz Molded Patch Cord PoE++

Hardware

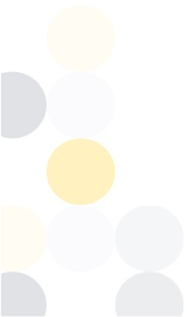
Number of Conductors	4 pair UTP
Cable Jacket Material	PVC - Polyvinyl Chloride
Fire Rating	CMG Rated (General Purpose)
Cable Type	Molded
Wiring Standard	TIA/EIA-568-B.1-2001 T568B

Performance

Cable Rating	CAT6 - 650 MHz
--------------	----------------

Connector(s)

Connector A	RJ-45
-------------	-------



Connector B RJ-45

Physical Characteristics

Color	White
Wire Gauge	24 AWG
Conductor Type	Stranded Copper
Cable Length	24.0 in [61.0 cm]
Product Length	24.0 in [61.0 cm]
Weight of Product	1.2 oz [35 g]

Packaging Information

Package Length	8.7 in [22 cm]
Package Width	7.9 in [20 cm]
Package Height	0.3 in [7 mm]
Shipping (Package) Weight	1.6 oz [44 g]

What's in the Box

Included in Package	2 ft. Cat6 Patch Cable - White
---------------------	--------------------------------

****Product appearance and specifications are subject to change without notice.***

