

msi™

Wind Top AE1900 **All-In-One (AIO) PC**

MS-6638 (V1.X) System



G52-66381X3

Copyright Notice

The material in this document is the intellectual property of **MICRO-STAR INTERNATIONAL**. We take every care in the preparation of this document, but no guarantee is given as to the correctness of its contents. Our products are under continual improvement and we reserve the right to make changes without notice.

Trademarks

All trademarks are the properties of their respective owners.

Intel® and Pentium® are registered trademarks of Intel Corporation.

AMD®, Athlon™, Athlon™ XP, Thoroughbred™ and Duron™ are registered trademarks of AMD Corporation.

NVIDIA®, the NVIDIA logo, DualNet and nForce are registered trademarks or trademarks of NVIDIA Corporation in the United States and/ or other countries.

PS/2® and OS/2® are registered trademarks of International Business Machines Corporation.

Windows® 95/ 98/ 2000/ NT/ XP/ VISTA are registered trademarks of Microsoft Corporation.

Netware® is a registered trademark of Novell, Inc.

Award® is a registered trademark of Phoenix Technologies Ltd.

AMI® is a registered trademark of American Megatrends Inc.

U.S. Patent Numbers

4,631,603; 4,819,098; 4,907,093; 5,315,448; and 6,516,132.

This product incorporates copyright protection technology that is protected by U.S. patents and other intellectual property rights. Use of this copyright protection technology must be authorized by Macrovision, and is intended for home and other limited viewing uses only unless otherwise authorized by Macrovision. Reverse engineering or disassembly is prohibited.

Revision History

Revision	Revision History	Date
V1.1	First Release	May 2009

Upgrade and Warranty

Please be noticed that the wireless LAN card, hard disk drive, and optical disk drive preinstalled in the product users purchased may be upgradable or replaceable by user's request.

To learn more about upgrade limitation, please refer to the specification in the User's Manual. For any further information about the product users purchased, please contact the local dealer.

Do not attempt to upgrade or replace any component of the product, if you are not an authorized dealer or service center, since it may cause the warranty void. It is strongly recommended to contact the authorized dealer or service center for any upgrade or replace service.

Technical Support

If a problem arises with your system and no solution can be obtained from the user's manual, please contact your place of purchase or local distributor. Alternatively, please try the following help resources for further guidance.

- ▶ Visit the MSI website for FAQ, technical guide, BIOS updates, driver updates and other information: **<http://www.msi.com/index.php?func=service>**
- ▶ Contact our technical staff at: **<http://ocss.msi.com>**

Safety Instructions

1. Always read the safety instructions carefully.
2. Keep this user's manual for future reference.
3. Keep this equipment away from humidity.
4. Lay this equipment on a reliable flat surface before setting it up.
5. The ventilator on the enclosure is used for air convection and to prevent the equipment from overheating. Do not cover the ventilator.
6. Check the AC input: 100-240V~, 50-60Hz, 1.5A.
7. Check the DC output: 19V $\overline{\text{---}}$ 3.42A.
8. Make sure that the power voltage is within its safety range and has been adjusted properly to the value of 100~240V before connecting the equipment to the power inlet.
9. Place the power cord in a way that people are unlikely to step on it. Do not place anything on the power cord.
10. Always unplug the power cord before inserting any add-on card or module.
11. All cautions and warnings on the equipment should be noted.
12. Never pour any liquid into the opening that could damage or cause electrical shock.
13. If any of the following situations arises, get the equipment checked by service personnel:
 - ▶ The power cord or plug is damaged.
 - ▶ Liquid has penetrated into the equipment.
 - ▶ The equipment has been exposed to moisture.
 - ▶ The equipment does not work well or you can not get it work according to user's manual.
 - ▶ The equipment has dropped and damaged.
 - ▶ The equipment has obvious sign of breakage.
14. **DO NOT LEAVE THIS EQUIPMENT IN AN ENVIRONMENT UNCONDITIONED, STORAGE TEMPERATURE ABOVE 40°C (102°F), IT MAY DAMAGE THE EQUIPMENT.**

WARNING:

1. For every changes in power cord's usage, please use an approved power cord with condition greater or equal to H05VV-F, 3G, 0.75mm².
2. Internal part is hazardous moving parts, please keep fingers and other body parts away.
3. For pluggable equipment, the socket-outlet shall be installed near the equipment and shall be easily accessible.
4. Do not disable the protective earth pin from the plug, the equipment must be connected to an earthed mains socket-outlet.
5. Adjustment of the volume control as well as the equalizer to other settings than the center position may increase the ear-/ headphones output voltage and therefore the sound pressure level.

CAUTION:

Danger of explosion if battery is incorrectly replaced. Replace only with the same or equivalent type recommended by the manufacturer.



廢電池請回收

For better environmental protection, waste batteries should be collected separately for recycling or special disposal.

- | |
|---|
| <ol style="list-style-type: none">1. The optical storage devices are classified as a Class 1 Laser products. Use of controls or adjustments or performance of procedures other than those specified.2. Do not touch the lens inside the drive. |
|---|

FCC-B Radio Frequency Interference Statement

This equipment has been tested and found to comply with the limits for a Class B digital device, pursuant to Part 15 of the FCC Rules. These limits are



designed to provide reasonable protection against harmful interference in a residential installation. This equipment generates, uses and can radiate radio frequency energy and, if not installed and used in accordance with the instruction manual, may cause harmful interference to radio communications. However, there is no guarantee that interference will not occur in a particular installation. If this equipment does cause harmful interference to radio or television reception, which can be determined by turning the equipment off and on, the user is encouraged to try to correct the interference by one or more of the measures listed below:

- ▶ Reorient or relocate the receiving antenna.
- ▶ Increase the separation between the equipment and receiver.
- ▶ Connect the equipment into an outlet on a circuit different from that to which the receiver is connected.
- ▶ Consult the dealer or an experienced radio/television technician for help.

Notice 1

The changes or modifications not expressly approved by the party responsible for compliance could void the user's authority to operate the equipment.

Notice 2

Shielded interface cables and A.C. power cord, if any, must be used in order to comply with the emission limits.

VOIR LA NOTICE D'INSTALLATION AVANT DE RACCORDER AU RESEAU.



This device complies with Part 15 of the FCC Rules. Operation is subject to the following two conditions:

- (1) this device may not cause harmful interference, and*
- (2) this device must accept any interference received, including interference that may cause undesired operation.*

WEEE (Waste Electrical and Electronic Equipment) Statement



ENGLISH

To protect the global environment and as an environmentalist, MSI must remind you that...

Under the European Union ("EU") Directive on Waste Electrical and Electronic Equipment, Directive 2002/96/EC, which takes effect on August 13, 2005, products of "electrical and electronic equipment" cannot be discarded as municipal waste anymore and manufacturers of covered electronic equipment will be obligated to take back such products at the end of their useful life. MSI will comply with the product take back requirements at the end of life of MSI-branded products that are sold into the EU. You can return these products to local collection points.

DEUTSCH

Hinweis von MSI zur Erhaltung und Schutz unserer Umwelt

Gemäß der Richtlinie 2002/96/EG über Elektro- und Elektronik-Altgeräte dürfen Elektro- und Elektronik-Altgeräte nicht mehr als kommunale Abfälle entsorgt werden. MSI hat europaweit verschiedene Sammel- und Recyclingunternehmen beauftragt, die in die Europäische Union in Verkehr gebrachten Produkte, am Ende seines Lebenszyklus zurückzunehmen. Bitte entsorgen Sie dieses Produkt zum gegebenen Zeitpunkt ausschließlich an einer lokalen Altgerätesammelstelle in Ihrer Nähe.

FRANÇAIS

En tant qu'écologiste et afin de protéger l'environnement, MSI tient à rappeler ceci...

Au sujet de la directive européenne (EU) relative aux déchets des équipement électriques et électroniques, directive 2002/96/EC, prenant effet le 13 août 2005, que les produits électriques et électroniques ne peuvent être déposés dans les décharges ou tout simplement mis à la poubelle. Les fabricants de ces équipements seront obligés de récupérer certains produits en fin de vie. MSI prendra en compte cette exigence relative au retour des produits en fin de vie au sein de la communauté européenne. Par conséquent vous pouvez retourner localement ces matériels dans les points de collecte.

РУССКИЙ

Компания MSI предпринимает активные действия по защите окружающей среды, поэтому напоминаем вам, что...

В соответствии с директивой Европейского Союза (ЕС) по предотвращению загрязнения окружающей среды использованным электрическим и электронным оборудованием (директива WEEE 2002/96/EC), вступающей в силу 13 августа 2005 года, изделия, относящиеся к электрическому и электронному оборудованию, не могут рассматриваться как бытовой мусор, поэтому производители вышеперечисленного электронного оборудования обязаны принимать его для переработки по окончании срока службы. MSI обязуется соблюдать требования по приему продукции, проданной под маркой MSI на территории ЕС, в переработку по окончании срока службы. Вы можете вернуть эти изделия в специализированные пункты приема.

ESPAÑOL

MSI como empresa comprometida con la protección del medio ambiente, recomienda:

Bajo la directiva 2002/96/EC de la Unión Europea en materia de desechos y/o equipos electrónicos, con fecha de rigor desde el 13 de agosto de 2005, los productos clasificados como "eléctricos y equipos electrónicos" no pueden ser depositados en los contenedores habituales de su municipio, los fabricantes de equipos electrónicos, están obligados a hacerse cargo de dichos productos al término de su período de vida. MSI estará comprometido con los términos de recogida de sus productos vendidos en la Unión Europea al final de su período de vida. Usted debe depositar estos productos en el punto limpio establecido por el ayuntamiento de su localidad o entregar a una empresa autorizada para la recogida de estos residuos.

NEDERLANDS

Om het milieu te beschermen, wil MSI u eraan herinneren dat....

De richtlijn van de Europese Unie (EU) met betrekking tot Vervuiling van Elektrische en Electronische producten (2002/96/EC), die op 13 Augustus 2005 in zal gaan kunnen niet meer beschouwd worden als vervuiling.

Fabrikanten van dit soort producten worden verplicht om producten retour te nemen aan het eind van hun levenscyclus. MSI zal overeenkomstig de richtlijn handelen voor de producten die de merknaam MSI dragen en verkocht zijn in de EU. Deze goederen kunnen geretourneerd worden op lokale inzamelingspunten.

SRPSKI

Da bi zaštitili prirodnu sredinu, i kao proizvođače koje vodi računa o okolini i prirodnoj sredini, MSI mora da vas podesti da...

Po Direktivi Evropske unije ("EU") o odbačenju elektonskoj i električnoj opremi, Direktiva 2002/96/EC, koja stupa na snagu od 13. Avgusta 2005, proizvodi koji spadaju pod "elektronsku i električnu opremu" ne mogu više biti odbačeni kao običan otpad i proizvođači ove opreme biće prinudeni da uzmu natrag ove proizvode na kraju njihovog uobičajenog veka trajanja. MSI će poštovati zahtev o preuzimanju ovakvih proizvoda kojima je istekao vek trajanja, koji imaju MSI oznaku i koji su prodati u EU. Ove proizvode možete vratiti na lokalnim mestima za prikupljanje.

POLSKI

Aby chronić nasze środowisko naturalne oraz jako firma dbająca o ekologię, MSI przypomina, że...

Zgodnie z Dyrektywą Unii Europejskiej ("UE") dotyczącą odpadów elektrycznych i elektronicznych (Dyrektywa 2002/96/EC), która wchodzi w życie 13 sierpnia 2005, tzw. "produkty oraz wyposażenie elektryczne i elektroniczne" nie mogą być traktowane jako śmieć komunalne, tak więc producenci tych produktów będą zobowiązani do odbierania ich w momencie gdy produkt jest wycofywany z użycia. MSI wypełni wymagania UE, przyjmując produkty (sprzedawane na terenie Unii Europejskiej) wycofywane z użycia. Produkty MSI będzie można zwracać w wyznaczonych punktach zbiorczych.

TÜRKÇE

Çevreci özelliğiyle bilinen MSI dünyada çevreyi korumak için hatırlatır:

Avrupa Birliği (AB) Kararnamesi Elektrik ve Elektronik Malzeme Atığı, 2002/96/EC Kararnamesi altında 13 Ağustos 2005 tarihinden itibaren geçerli olmak üzere, elektrikli ve elektronik malzemeler diğer atıklar gibi çöpe atılmayacak ve bu elektronik cihazların üreticileri, cihazların kullanım süreleri bittikten sonra ürünleri geri toplamakla yükümlü olacaktır. Avrupa Birliği'ne satılan MSI markalı ürünlerin kullanım süreleri bittiğinde MSI ürünlerin geri alınması isteği ile işbirliği içerisinde olacaktır. Ürünlerinizi yerel toplama noktalarına bırakabilirsiniz.

ČESKY

Záleží nám na ochraně životního prostředí - společnost MSI upozorňuje...

Podle směrnice Evropské unie ("EU") o likvidaci elektrických a elektronických výrobků 2002/96/EC platné od 13. srpna 2005 je zakázáno likvidovat "elektrické a elektronické výrobky" v běžném komunálním odpadu a výrobci elektronických výrobků, na které se tato směrnice vztahuje, budou povinni odebírat takové výrobky zpět po skončení jejich životnosti. Společnost MSI splní požadavky na odebrání výrobků značky MSI, prodávaných v zemích EU, po skončení jejich životnosti. Tyto výrobky můžete odevzdat v místních sběrnách.

MAGYAR

Annak érdekében, hogy környezetünket megvédjük, illetve környezetvédként fellépve az MSI emlékezteti Önt, hogy ...

Az Európai Unió („EU”) 2005. augusztus 13-án hatályba lépő, az elektromos és elektronikus berendezések hulladékaikról szóló 2002/96/EK irányelve szerint az elektromos és elektronikus berendezések többé nem kezelhetők lakossági hulladékként, és az ilyen elektronikus berendezések gyártói kötelessé válnak az ilyen termékek visszavételére azok hasznos élettartama végén. Az MSI betartja a termékvisszavétellel kapcsolatos követelményeket az MSI márkánév alatt az EU-n belül értékesített termékek esetében, azok élettartamának végén. Az ilyen termékeket a legközelebbi gyűjtőhelyre viheti.

ITALIANO

Per proteggere l'ambiente, MSI, da sempre amica della natura, ti ricorda che....

In base alla Direttiva dell'Unione Europea (EU) sullo Smaltimento dei Materiali Elettrici ed Elettronici, Direttiva 2002/96/EC in vigore dal 13 Agosto 2005, prodotti appartenenti alla categoria dei Materiali Elettrici ed Elettronici non possono più essere eliminati come rifiuti municipali: i produttori di detti materiali saranno obbligati a ritirare ogni prodotto alla fine del suo ciclo di vita. MSI si adegnerà a tale Direttiva ritirando tutti i prodotti marchiati MSI che sono stati venduti all'interno dell'Unione Europea alla fine del loro ciclo di vita. È possibile portare i prodotti nel più vicino punto di raccolta.

CONTENTS

Copyright Notice	ii
Trademarks	ii
U.S. Patent Numbers	ii
Revision History	ii
Upgrade and Warranty	iii
Technical Support	iii
Safety Instructions	iv
FCC-B Radio Frequency Interference Statement	v
WEEE (Waste Electrical and Electronic Equipment) Statement	vi
Chapter 1 System Overview	1-1
Packing Contents.....	1-2
System Overview.....	1-3
Mainboard Specifications.....	1-10
System Specifications.....	1-11
Hardware Setup.....	1-12
Chapter 2 Getting Started	2-1
System Booting Setup for the First Time.....	2-2
How to Create the System Recovery Disk.....	2-3
Touch Panel Calibration.....	2-4
How to Use the Keyboard.....	2-6
Connecting to a Wireless LAN.....	2-8

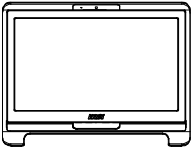
Chapter 1

System Overview

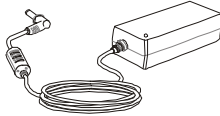
Congratulations for purchasing the **Wind Top AE1900 AIO PC**. This is your best choice for all in one PC. It can easily be set anywhere. The feature packed platform also gives you an exciting PC experience.

msi[™]

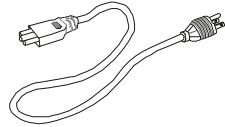
Packing Contents



**Wind Top AE1900
AIO PC**



Power Adapter



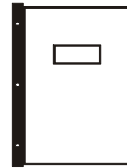
Power Cord



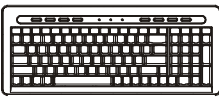
LCD Display Wiper



**Driver & Utility
& Blank CD**



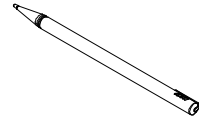
**User Manual &
Quick Guide**



Keyboard (Optional)



Mouse (Optional)



**Stylus Touch Pen
(Optional)**

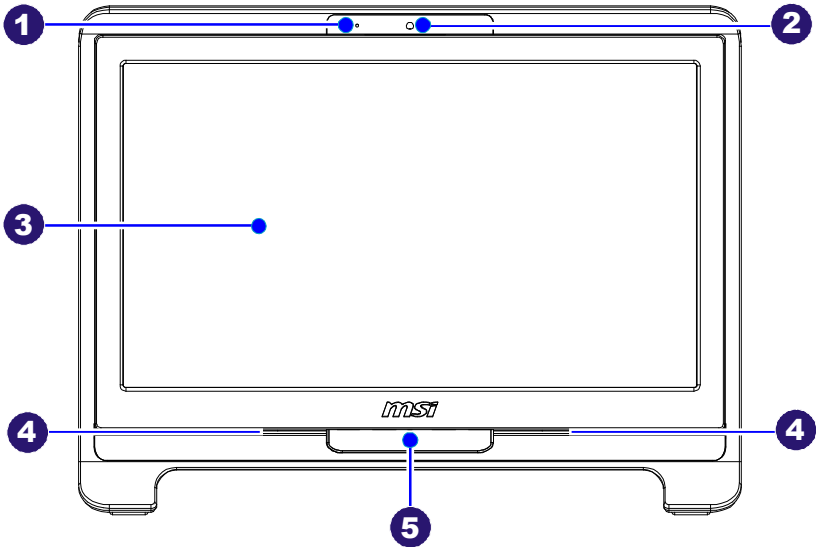
** The blank CD is for system recovery backup.*

** Please contact us immediately if any of the item is damaged or missing.*

** The picture is for your reference only and your packing contents may slightly vary depending on the model you purchased.*

System Overview

► Front View



1 Microphone

- The built-in microphone can be used for video chatting online.

2 Webcam

- The built-in webcam with the microphone can be used for picture taking, video recording, online conferencing and any other interactive applications.

3 LCD Display

- The 18.5-inch TFT LCD display is with an optimal resolution of 1366 X 768 and standard proportion of 16:9 widescreen.

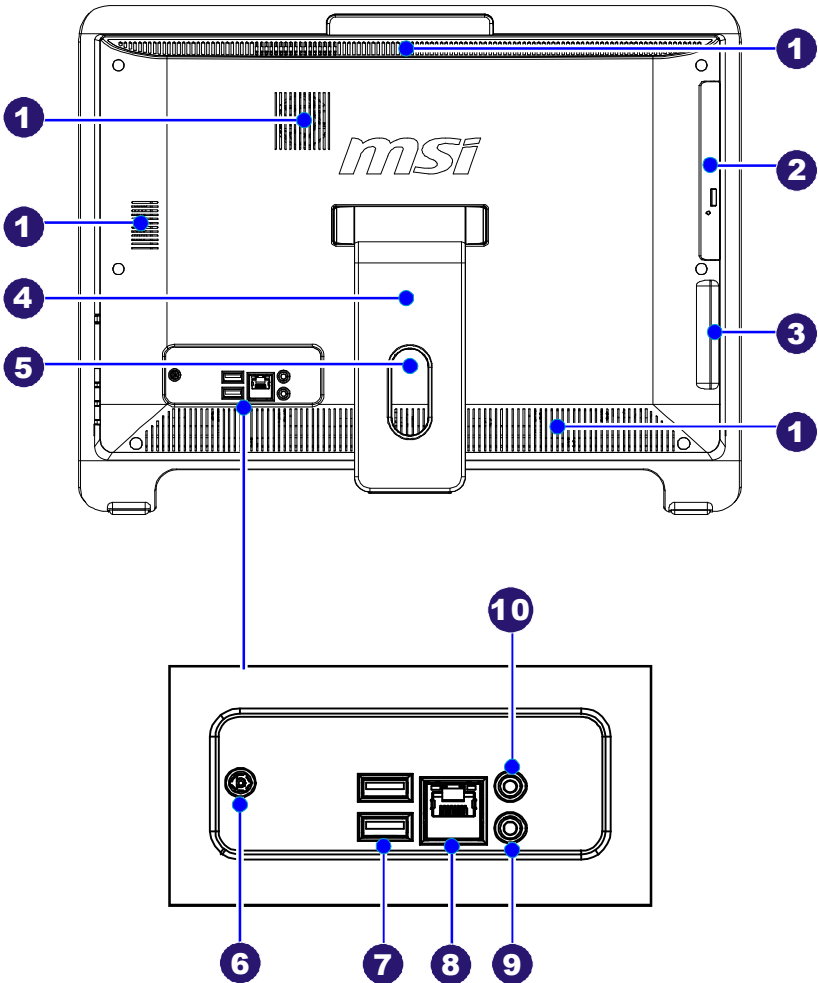
4 Stereo Speakers

- The built-in stereo speakers deliver high quality sound blaster with stereo system and Hi-Fi function supported.

5 Power Indicator

- The power indicator illuminates in green when the AIO PC is on, illuminates in orange when the AIO PC is in sleep mode and turns off when the AIO PC is off.

► Rear View



* We suggest that you should connect the power adapter to your AIO PC first and then connect the power cord to the socket-outlet for safety reason.

1 Ventilator

- The ventilator on the enclosure is used for air convection and to prevent the equipment from overheating. Do not cover the ventilator.

2 Optical Disk Drive

- A DVD Super-Multi drive is integrated for your home entertainment.

3 Card Reader Drive

- The built-in card reader may support various types of memory card, such as XD (eXtreme Digital), SD (Secure Digital), SDHC (SD High Capacity), MS (Memory Stick), MS Pro (Memory Stick Pro) or MMC (Multi-Media Card) cards that usually used in devices like digital cameras, MP3 players, mobile phones and PDAs. Contact the local dealer for further information and please be noted that the supported memory cards may vary without notice.

4 Pop-Up Stand

5 Cable Routing Hole

- Route the cables through the cable routing hole to avoid cable spaghetti when connecting devices.

6 Power Jack

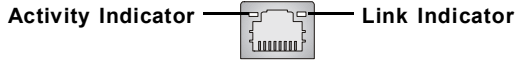
- The power adapter converts AC power to DC power for this jack. Power supplied through this jack supplies power to the PC. To prevent damage to the PC, always use the supplied power adapter.

7 USB Ports

- The USB (Universal Serial Bus) port is provided for attaching USB devices such as mouse, keyboard, printer, scanner, camera, PDA or other USB-compatible devices.

8 RJ-45 LAN Jack 

- The standard RJ-45 LAN jack is provided for connection to the Local Area Network (LAN). You can connect a network cable to it.



LED	Color	LED State	Condition
Left	Yellow	Off	LAN link is not established.
		Off (steady state)	LAN link is established.
		On (brighter & pulsing)	The computer is communicating with another computer on the LAN.
Right	Green	Off	10 Mbit/ sec data rate is selected.
		On	100 Mbit/ sec data rate is selected.
	Orange	On	1000 Mbit/ sec data rate is selected.

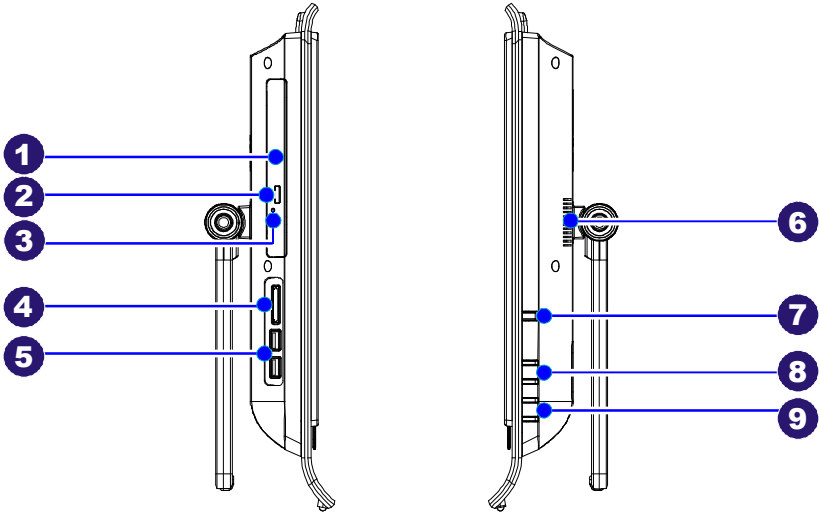
9 Microphone Jack (Pink) 

- This connector is provided for microphones.

10 Headphone Jack (Green) 

- This connector is provided for headphones or speakers.

► Side View



1 Optical Disk Drive

- A DVD Super-Multi drive is integrated for your home entertainment.

2 Eject Button

- Press the eject button to open the optical disk drive.

3 Eject Hole

- Insert a thin, straight object (such as a paper clip) into the eject hole to open the optical disk drive manually if the eject button does not work.

4 Card Reader Drive

- The built-in card reader may support various types of memory card, such as XD (eXtreme Digital), SD (Secure Digital), SDHC (SD High Capacity), MS (Memory Stick), MS Pro (Memory Stick Pro) or MMC (Multi-Media Card) cards that usually used in devices like digital cameras, MP3 players, mobile phones and PDAs. Contact the local dealer for further information and please be noted that the supported memory cards may vary without notice.

5 USB Ports

- The USB (Universal Serial Bus) port is provided for attaching USB devices such as mouse, keyboard, printer, scanner, camera, PDA or other USB-compatible devices.

6 Ventilator

- The ventilator on the enclosure is used for air convection and to prevent the equipment from overheating. Do not cover the ventilator.

7 Power Button

- Press the power button to turn the system on and off.

8 Volume Control Button +/-

- The volume control button adjusts the sound level.

9 Brightness Control Button +/-

- The brightness control button adjusts the screen brightness level.

Mainboard Specifications

Processor

- Intel® Atom™ Single/ Dual-Core processor 230/ 330 (Optional)
- CPU Frequency 1.6 GHz
- Front Side Bus (FSB) 533 MHz
- Thermal Design Power (TDP) 4 W/ 8 W

Chipset

- North Bridge: Intel® 945GC chipset
- South Bridge: Intel® ICH7 chipset

Memory

- 1 DDR2 SO-DIMM slot (2 GB Max) for Atom™ Single/ Dual-Core CPU only

LAN

- Supports Gigabit Ethernet Controller for PCI Express™ Applications by Realtek® RTL8111C
- Compliant with PCI 2.3
- Supports ACPI Power Management

Audio

- Chip integrated by Realtek® ALC888
- Compliant with Azalia 1.0 spec

Form Factor

- 210 mm (W) X 197 mm (H)

System Specifications



LCD Display

- 18.5" TFT LCD display with an optimal resolution of 1366 X 768 and standard proportion of 16:9 widescreen

Input/ Output (I/O)

- 1 power jack
- 4 USB ports
- 1 RJ-45 LAN jack
- 1 headphone jack
- 1 microphone jack

Power Supply

- 65 watt power adapter with active PFC
- Delta/ ADP - 65HB BB
- I/P: 100-240V~, 50-60Hz, 1.5A
- O/P: 19V  3.42A
- FSP/ FSP065-RAB
- I/P: 100-240V~, 50-60Hz, 1.5A
- O/P: 19V  3.42A

Stereo Speaker

- 2 internal stereo speakers 3W

Built-In Card

- 1 wireless LAN card

Built-In Drive

- 1 card reader drive
- 1 optical disk drive (Tray type)
- 1 hard disk drive (2.5" NB type)

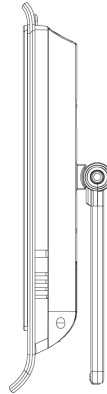
Dimension

- 476 mm (W) X 365 mm (H) X 49 mm (D)

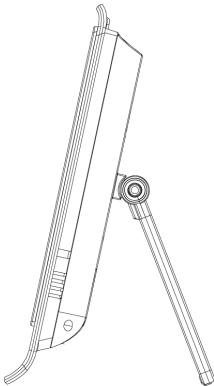
Hardware Setup

Positioning your AIO PC

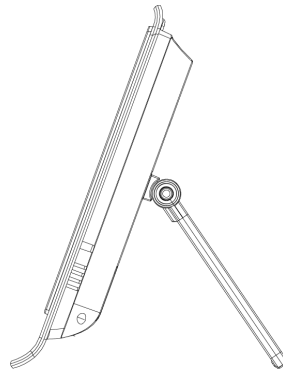
Step 1. Place your AIO PC on a flat and steady surface such as a table or desk.



Step 2. Pull the stand open and tilt the LCD display to an angle of between 14 and 24 degrees to suit your preference. This helps to reduce your eye strain and muscle fatigue.



14 degrees



24 degrees

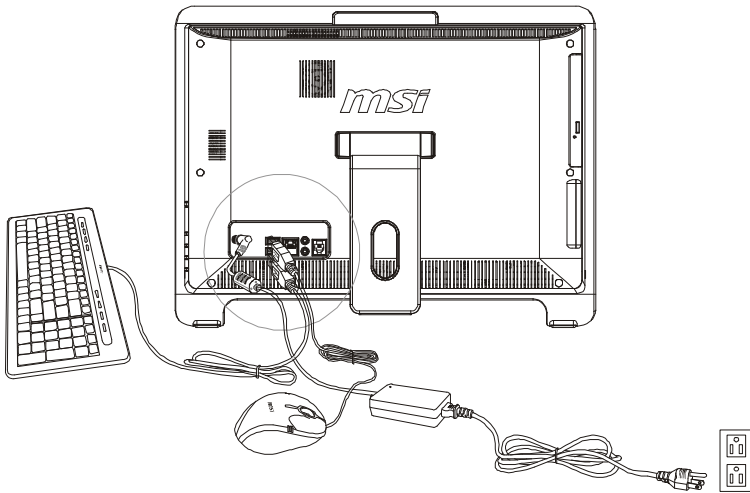
Connecting Peripheral Devices

Step 1. Connect a USB-interfaced mouse and keyboard to the USB ports on the rear panel.

Step 2. Connect a network device to the LAN port and connect necessary audio devices to the audio jacks.

Step 3. Connect the power adapter to the power supply.

NOTE: We suggest that you connect the power adapter to your AIO PC first and then connect the power cord to the socket-outlet for safety concerns.



Chapter 2

Getting Started

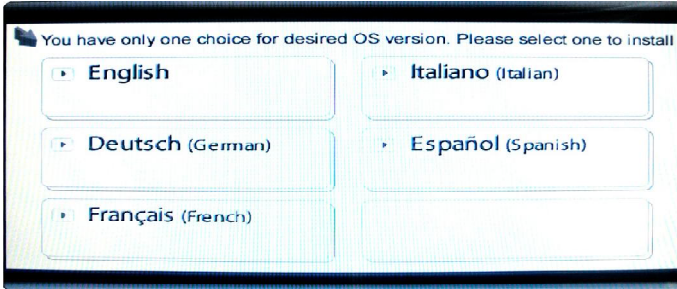
Wind Top AE1900 AIO PC is integrated in design, selecting an elegant black or white with a glassy frame, which displays the simplicity of modern individualism and the comfort of home. Furthermore, it is accompanied with the best computer features, such as instant message, low acoustics, energy saving and 802.11 b/g/n wireless internet capability so you may roam freely in the realm of cyberspace.

msi[™]

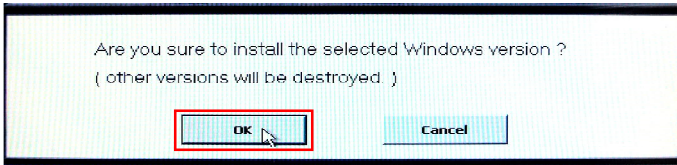
System Booting Setup for the First Time

For the first-time use, you will need to go over the following steps to start using your **Wind Top Series AIO PC**. The entire booting setup will take you **around 25 minutes**.

Step 1. Select the **language** of operation system you need.



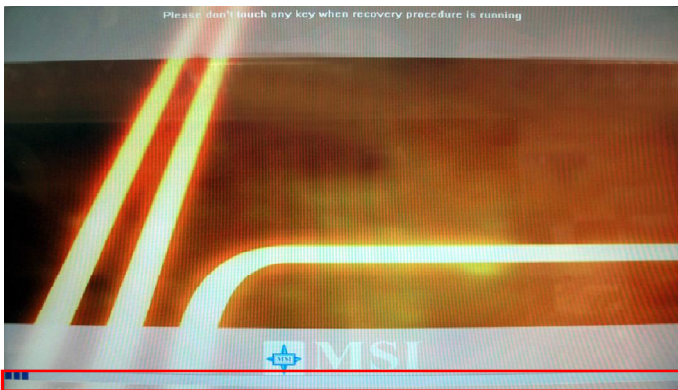
Step 2. Click **[OK]** to confirm the selected Windows version.



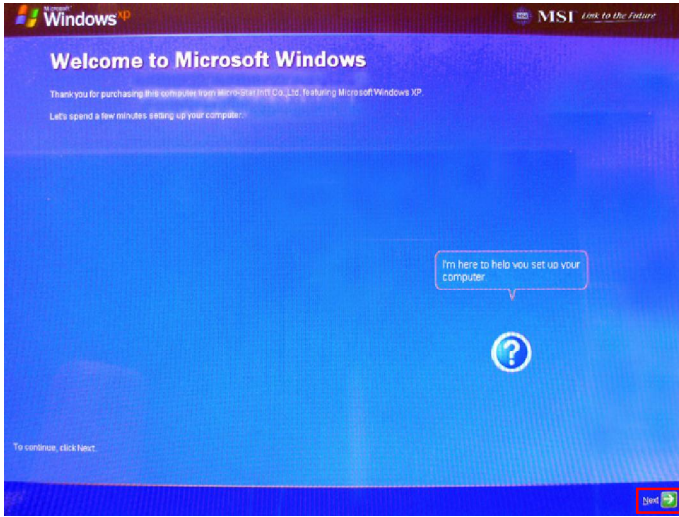
Step 3. Click **[OK]** to ensure the AC power connection and do not turn it off while Windows setup is running.



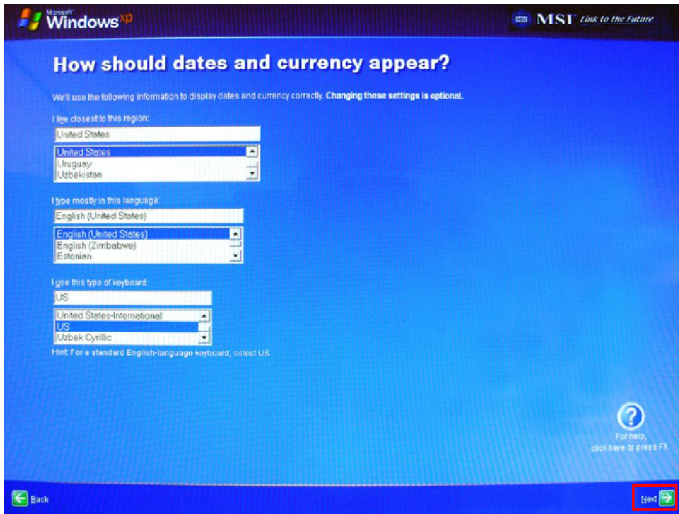
Step 4. Windows setup starts running. It takes around 20 minutes to finish the progress loading.



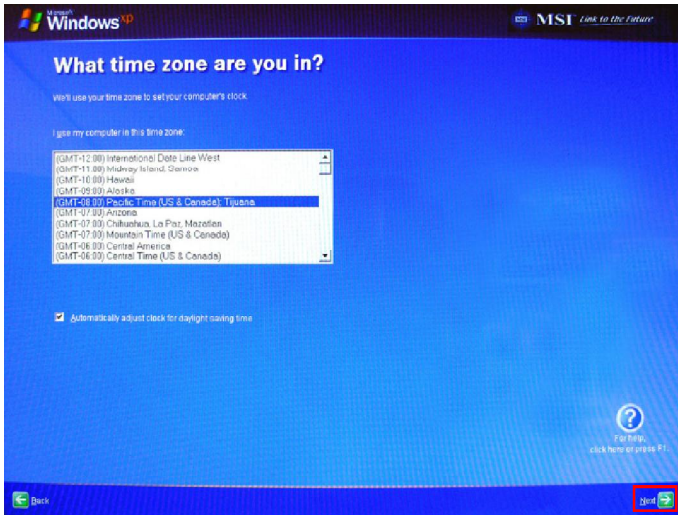
Step 5. Enter the main page of “Welcome to Microsoft Windows” and click [Next] to continue.



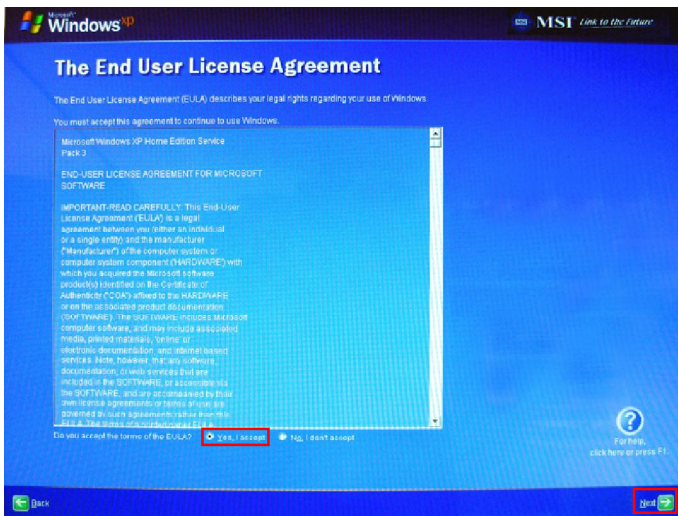
Step 6. Choose the **region**, **language** and **type of keyboard** you need. Click [Next] to continue.



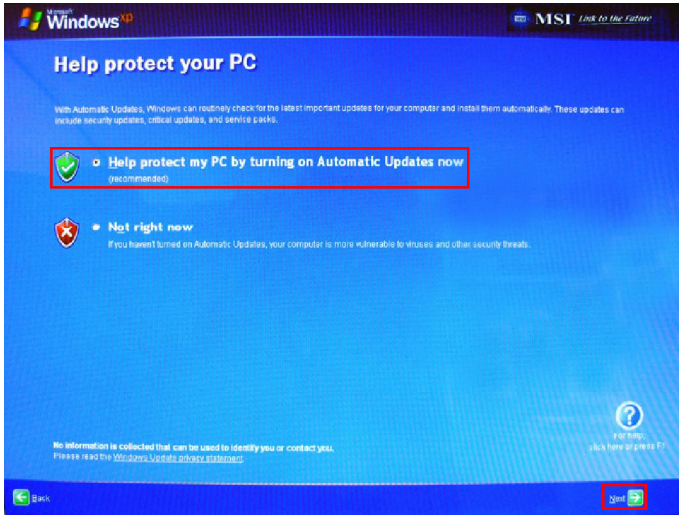
Step 7. Select the **time zone** you are in and click **[Next]** to continue.



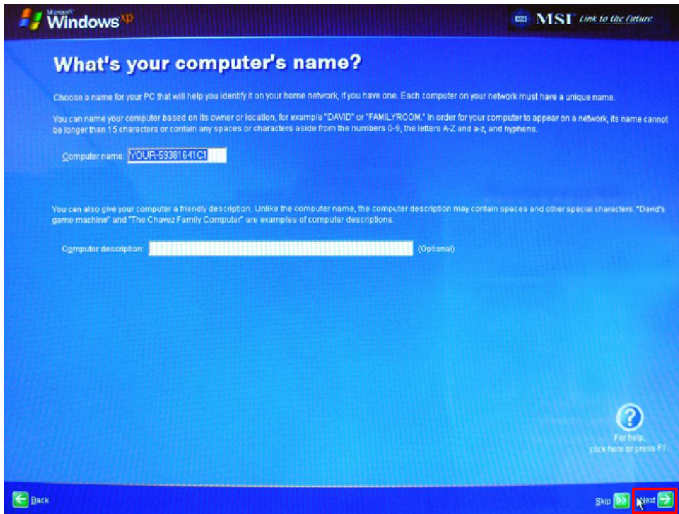
Step 8. Select **“Yes, I accept”** for the End User License Agreement and click **[Next]** to continue.



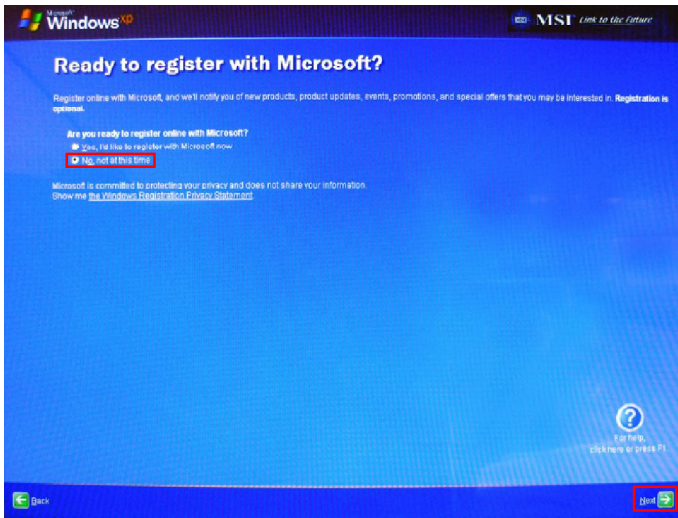
Step 9. Select “Help protect my PC by turning on Automatic Updates now” and click [Next] to continue.



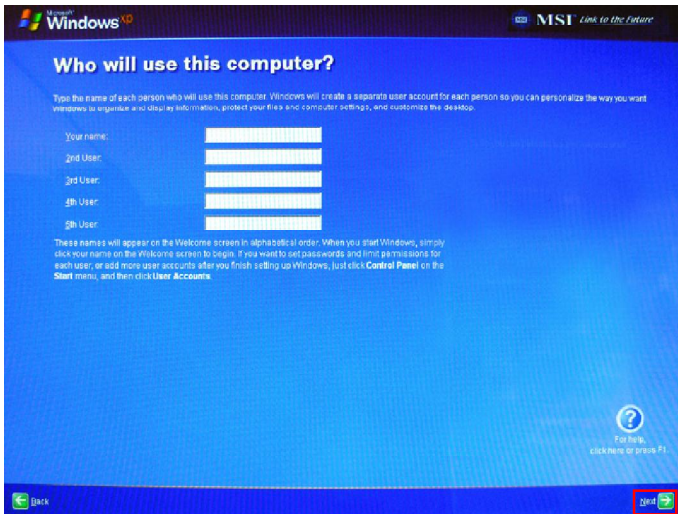
Step 10. Enter the computer name and computer descriptions you want. Click [Next] to continue.



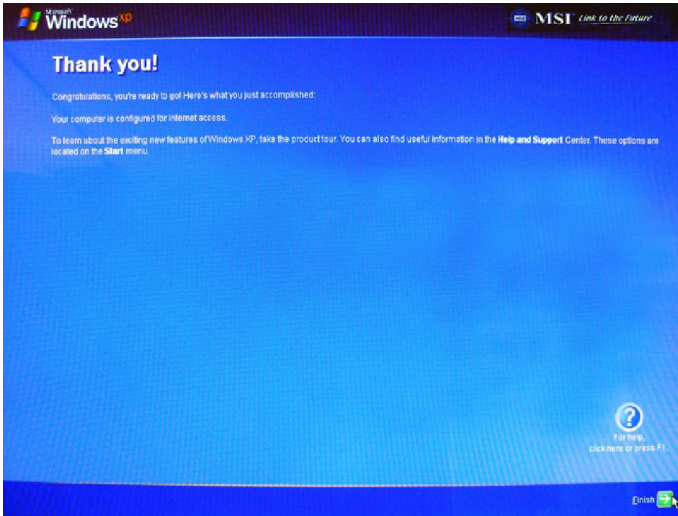
Step 11. Assume and Internet connection cannot be chosen yet. Click **[Skip]** to continue. Then, select **“No, not at this time.”** to register with Microsoft® later and click **[Next]** to continue.



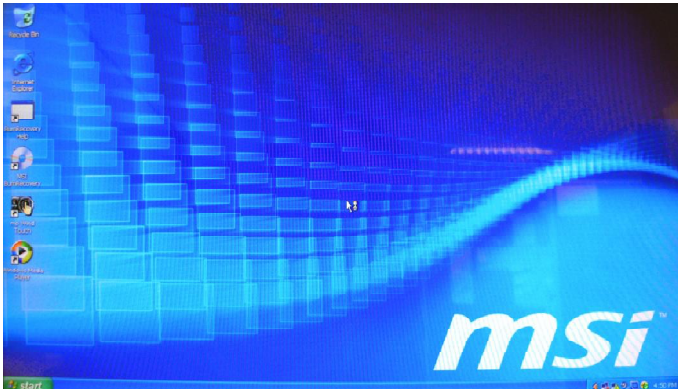
Step 12. Enter the **computer user name** and click **[Next]** to continue.



Step 13. Click **[Finish]** and then the main page of Windows comes out.



Step 14. Touch screen will automatically be activated and post the default home page of MSI Wind Touch. Wind Top Series AIO PC will be ready for use from here.

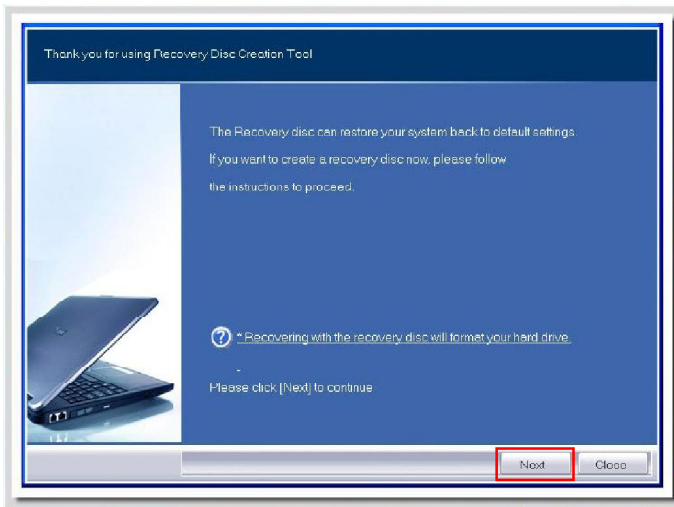


How to Create the System Recovery Disk

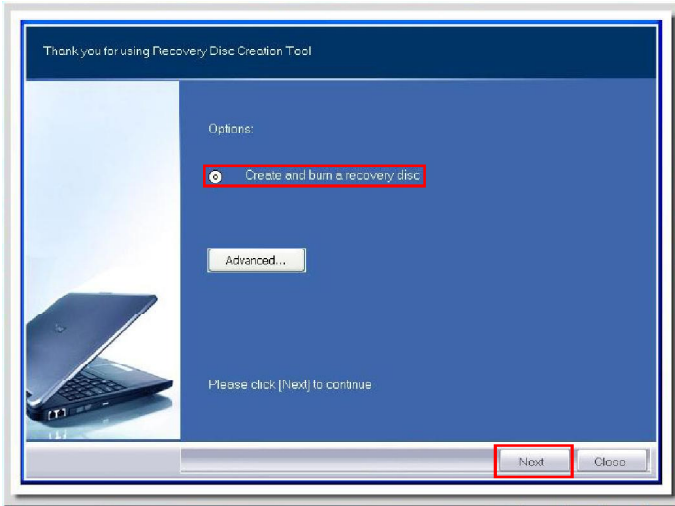
For the first-time use, it is required for you to create a system recovery disk as the backup solution for any accidents. Before moving forward, please make sure your system booting setup is complete and go over the following procedures to get it done.

Step 1. Select the icon of “MSI BurnRecovery”  on the desktop screen and click through it.

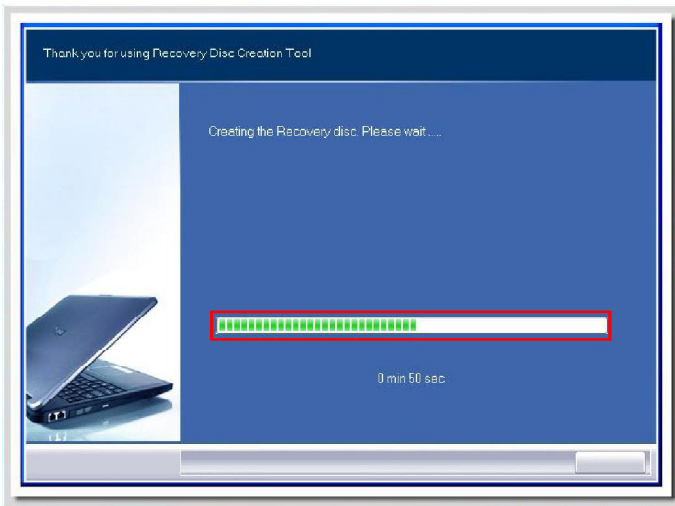
Step 2. Click **[Next]** to start the image creation of the recovery disk.



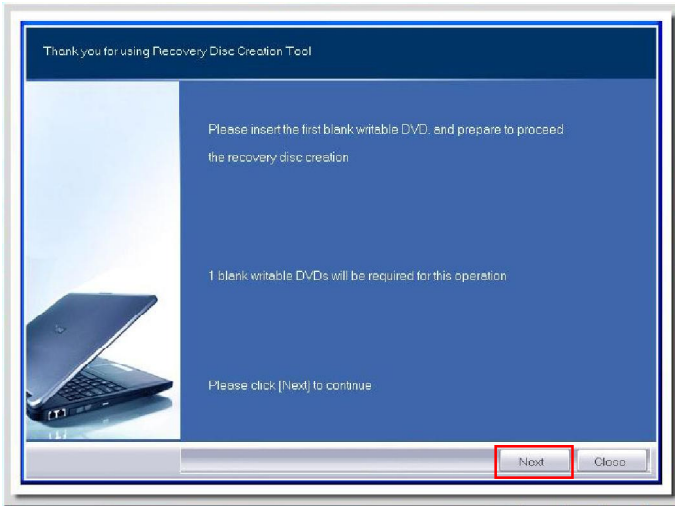
Step 3. Select “Create and burn a recovery disk” and click [Next] to continue.



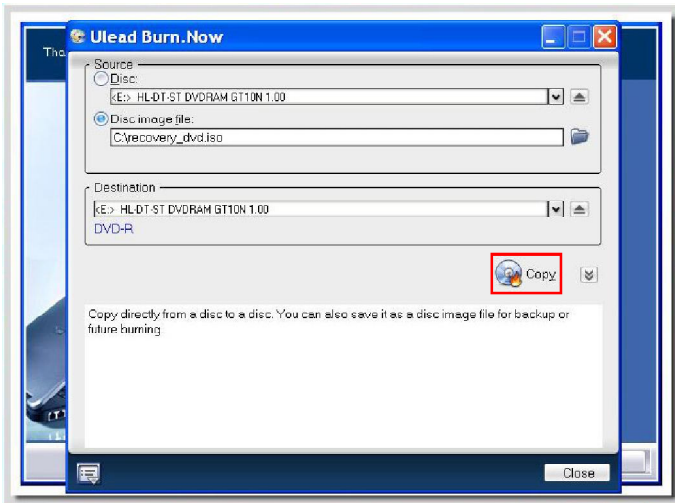
Step 4. The progress bar starts running to create the image of recovery disk. It takes around 2-3 minutes to finish the processing.

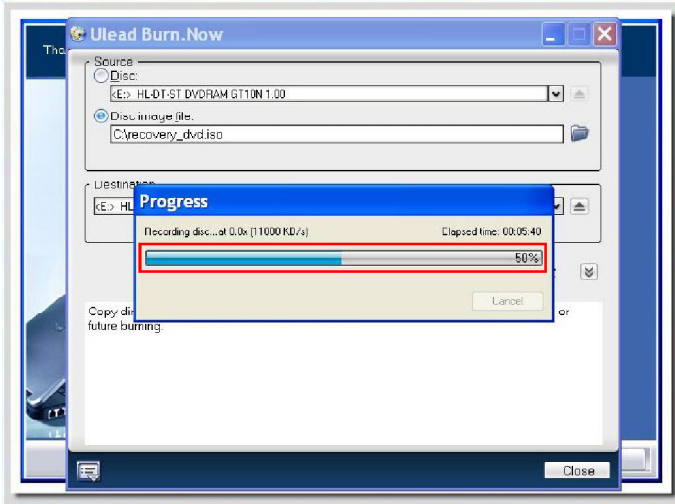


Step 5. Insert a blank DVD-R disk (free bundle with the standard package) and click **[Next]** to continue.

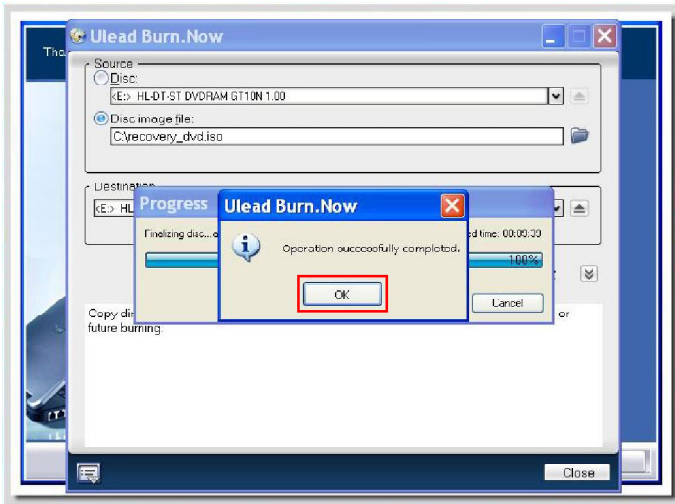


Step 6. The user interface of Ulead Burn. Now pops out. Click **[Copy]** to start the burning progress. It takes **around 9 minutes** to finish the processing.





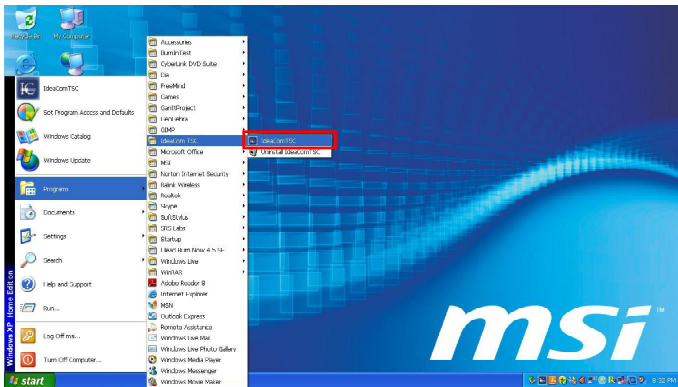
Step 7. The message of “**Operation successfully completed**” pops out. Click [OK] and take out the disk to finish the recovery disk creation.



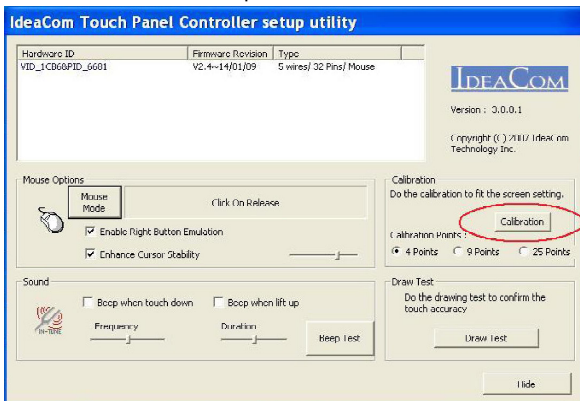
Touch Panel Calibration

Wind Top Series AIO PC has touch panel function. If the mouse cursor can not match the move, users could use the **IdeaCom TSC** tool installed in system to adjust the accuracy of the touch panel. Please go over the following steps to get it done.

Step 1. Open the **IdeaCom TSC** tool by clicking from **Start > Programs > IdeaCom TSC > IdeaCom TSC**.



Step 2. Then, the **IdeaCom Touch Panel Controller setup utility** appears as below. Click on **“Calibration”** to adjust the accuracy of the touch panel. It has three modes: **4 points, 9 points and 25 points**. We suggest that the user choose 9 points to adjust touch panel. If the user desires the most exactness, then choose 25 points instead.



Step 3. Please follow the instruction on the screen to press each symbol: **Please Touch the Blinking Symbol until Beep or Stop Blinking (ESC to Abort).**

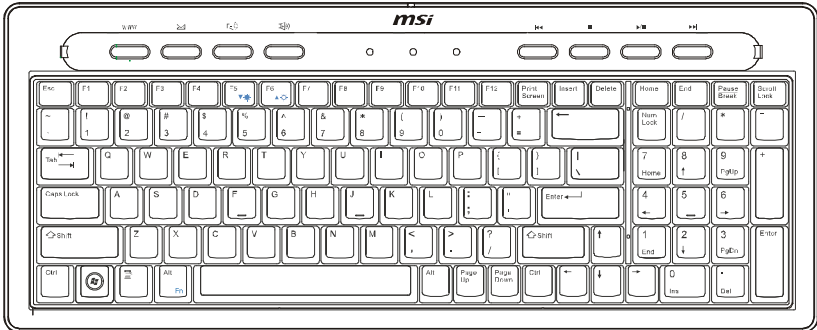


Important

1. Do not touch the screen directly with any sharp-pointed object.
2. Actual product specifications may vary with territories.

How to Use the Keyboard

Wind Top Series AIO PC packs with a wired keyboard that helps your control of the system.



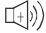





► Specifications

- Weight: 824 g; Cable: 150 cm
- USB interface for all Windows® OS
- Low profile with silk printing technology
- Built-in 103 keys + 6 multimedia keys + 4 hotkeys
- Dimension: 400 mm (H) X 165 mm (W) X 31 mm (D)





► Features

- Meet RoHS standards
- Adjustable height feet
- Lock detect light design
- Multimedia slim wired keyboard
- Burnish frame keyboard design
- Key life cycle \geq 10 million times
- Adjustable LCD display brightness
- Low profile structure keyboard for easy input
- Only half the thickness of a standard keyboard (14 mm)

► Multimedia Keys

- | | | |
|---|--------------------|-----------------------------|
|  | Volume + | Volume up. |
|  | Volume - | Volume down. |
|  | Play/ Pause | Play and pause. |
|  | Stop | Stop playing media. |
|  | Forward | Forward to next track. |
|  | Backward | Backward to previous track. |

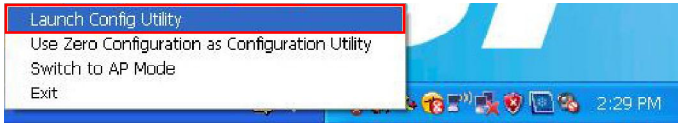
► Hotkeys

- | | | |
|---|-----------------|---|
|  | WWW Home | Launch default web browser and goes to the home web page. |
|  | E-Mail | Launch E-Mail account. |
|  | Fn + F5 | Decrease the LCD brightness. |
|  | Fn + F6 | Increase the LCD brightness. |

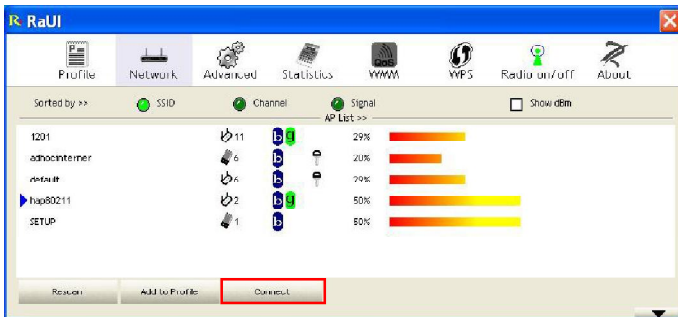
* The illustration of keyboard is for reference only. Actual product specifications may vary with territories.

Connecting to a Wireless LAN

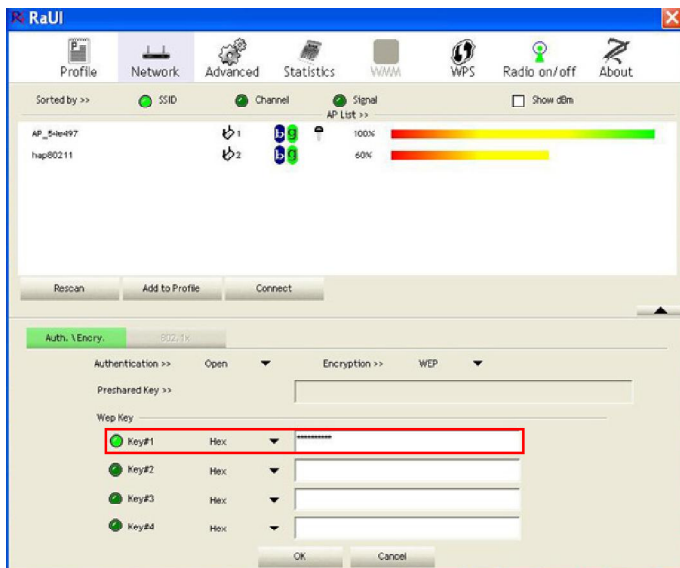
Step 1. Right-click the Ralink Wireless LAN Card status icon in the lower right corner, and then click **Launch Config Utility**.



Step 2. The window displays some available wireless networks. Choose a network, and then click **Connect**.



Step 3. There may prompts you to enter a key. Type the network key and then click **OK**.



Step 4. Now, you're ready to browse the Web wirelessly.

