


Dell Pro 5 Wired Fingerprint ESS Mouse

MS526C

User's Guide

Notes, cautions, and warnings

 **NOTE:** A NOTE indicates important information that helps you make better use of your product.

 **CAUTION:** A CAUTION indicates either potential damage to hardware or loss of data and tells you how to avoid the problem.

 **WARNING:** A WARNING indicates a potential for property damage, personal injury, or death.

Contents

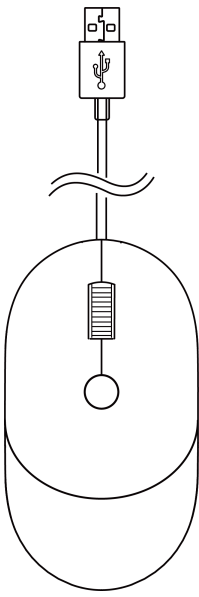

About your mouse	4
Package contents	4
Product features	5
Mouse part description	5
Top view	5
Bottom view	6
Specifications	7
Dell Display and Peripheral Manager	8
Installing Dell Display and Peripheral Manager	8
Setting up your mouse	9
Troubleshooting	10
Statutory information	11
Limited Warranty and Return Policies	11
For U.S. customers	11
For European, Middle Eastern and African customers	11
For non-U.S. customers	11
Revision history	12

About your mouse

Package contents

The following table provides the list of components that are shipped with your mouse. If any component is missing, contact Dell. For more information, see [Contacting Dell](#).

Table 1. Mouse components and descriptions

Component image	Component description
	Dell MS526C Mouse
	Document NOTE: Scan the QR code on the document to access the information about setting up, features, specifications, and troubleshooting.

Product features

Dell Pro 5 Wired Fingerprint ESS Mouse MS526C features an integrated biometric sensor and high-durability silent switches. The mouse includes the following features:

- Windows Hello and FIDO2 Authentication: Supports Enhanced Sign-in Security (ESS) for enterprise-grade biometric protection and FIDO2 for secure, passwordless authentication across compatible platforms.
- Integrated fingerprint reader: High-speed sensor with onboard storage for up to 10 unique fingerprints for shared multiuser access.
- Silent click technology: Equipped with silent switches to reduce click noise, ideal for quiet workspaces.
- Wired USB connectivity: A reliable plug-and-play connection providing zero-latency input and secure data encryption.

Mouse part description

Top view

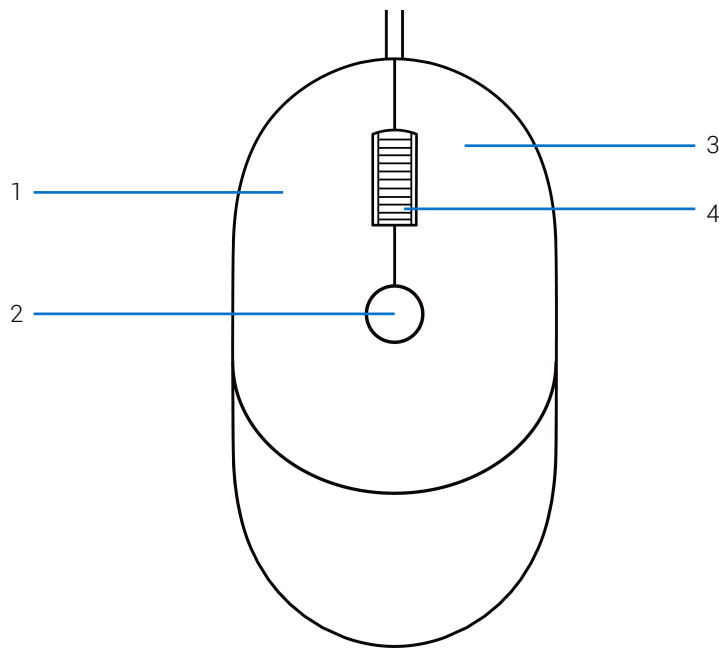


Figure 1. Top view

Table 2. Components and descriptions

Callout	Description	Use
1	Left button	To select objects
2	Fingerprint sensor	To apply a fingerprint function
3	Right button	To select menu functions
4	Scroll or middle button	To scroll the page up or down

Bottom view

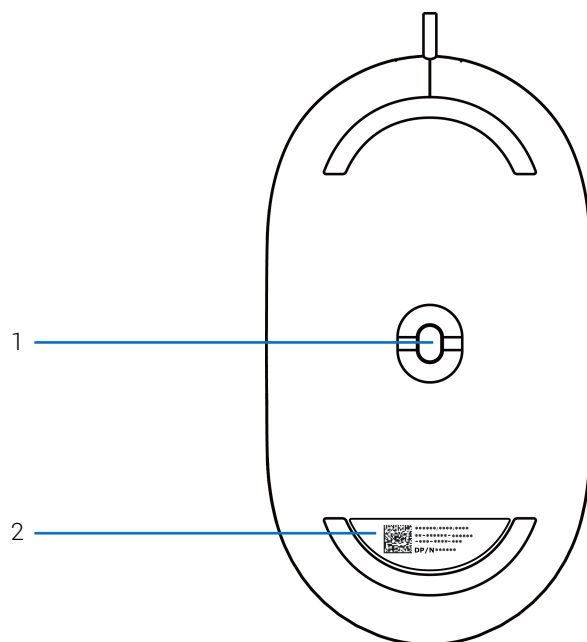


Figure 2. Bottom view

Table 3. Components and descriptions

Callout	Description	Use
1	Optical sensor	To set up the resolution
2	PPID label	To identify the serial number

Specifications

Table 4. General specifications

General	Value
Model number	MS526C
Connection type	Wired mouse with fingerprint reader
Supported operating systems	Mouse function: <ul style="list-style-type: none">• Windows 8.1, 10, and 11• Mac• Linux (Red Hat Enterprise 8.0/ Ubuntu 18.4)• Chrome• Android OS Fingerprint reader: <ul style="list-style-type: none">• Windows 10 and 11
FIDO2 payment requirement	Windows 10 and above

Table 5. Electrical specifications

Electrical	Value
Operating voltage	5 V
Operating power current (maximum)	100 mA

Table 6. Physical specifications

Physical	Value
Weight (with USB cable)	73 g (0.16 lb)
Length	115.6 mm (4.55 in)
Width	61.7 mm (2.43 in)
Height	39.4 mm (1.55 in)
Cable length	1800 mm (70.87 in)

Table 7. Environmental specifications

Environmental	Value
Operating temperature	0°C - 40°C (32°F - 104°F)
Storage temperature	-40°C - 65°C (-40°F - 149°F)
Operating condition	95% maximum relative humidity; non-condensing
Storage condition	85% maximum relative humidity; non-condensing

Dell Display and Peripheral Manager

Dell Display and Peripheral Manager is an app that enables you to set up and configure your Dell monitors and peripherals. With this app you can:

- Assign program shortcuts to Middle button through **Button Customization** tab. You can even set shortcuts specific to an app with App settings.
- Configure DPI setting and set primary mouse button.
- View device information such as firmware version.
- Upgrade to the latest firmware for your device.

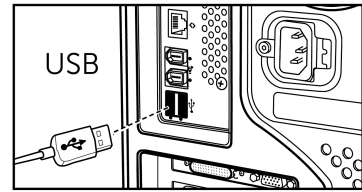
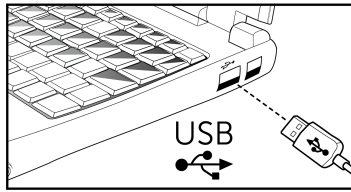
Installing Dell Display and Peripheral Manager

When you connect the device to your computer for the first time, you may be prompted to download and install the app.

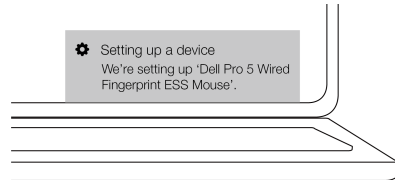
- i** **NOTE:** If the download prompt does not appear within a few minutes, you can manually install the software from Dell.com/support/DDPM. For more information, expand **Support Resources** and click or tap **Manuals & Documents** to access the *Dell Display and Peripheral Manager User's Guide*.

Setting up your mouse

1. Connect the mouse to your computer.



2. Install the fingerprint driver through the Windows Update on your computer.



3. If Windows Update is disabled or fails to install the mouse driver on your computer, do the following

1. Go to Dell.com/support/MS526C/downloads.

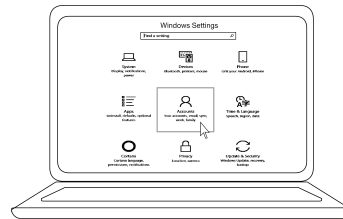
2. Download the MS526C mouse driver.

3. Install the mouse driver by following the on-screen instructions.

NOTE: MS526C will still operate with basic mouse functionality even without driver installation.

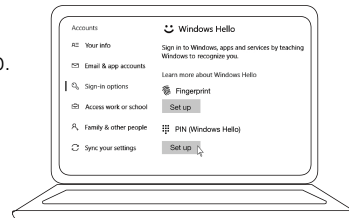
4. Set up Windows Hello on your computer.

1. Go to **Setting > Accounts > Sign-in options**.



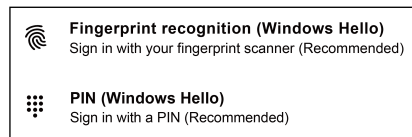
2. Click the **PIN (Windows Hello)** option.

NOTE: You may need to set up a password before the PIN setup.



5. Set up Fingerprint recognition (Windows Hello).

1. Go to **Setting > Accounts > Sign-in options > Fingerprint recognition (Windows Hello)**.



2. Continue to place your finger on the sensor until the fingerprint setup is complete.



Troubleshooting

Problems	Possible solutions
Unable to use the mouse	<ol style="list-style-type: none">1. Disconnect and then reconnect the mouse USB cable to the computer.2. Disconnect the mouse USB cable and then reconnect to another USB port.3. Restart the computer.
Unable to access by registered fingerprints	<ol style="list-style-type: none">1. You must set up PIN before you set up fingerprint recognition. Go to Settings > Accounts > Sign-in options > PIN > Set up2. Remove registered fingerprints. Go to Settings > Accounts > Sign-in options > Fingerprint recognition > Remove3. Register your fingerprint again. Go to Settings > Accounts > Sign-in options > Fingerprint recognition > Set up
Unable to register fingerprints and see "Windows Hello Error message" "Sorry, something went wrong. You've reached the 10 fingerprint maximum for this account."	<ol style="list-style-type: none">1. Remove registered fingerprints. Go to Settings > Accounts > Sign-in options > Fingerprint recognition > Remove2. Register your fingerprint again. Go to Settings > Accounts > Sign-in options > Fingerprint recognition > Set up <p>NOTE: When "Remove fingerprint" is selected, all fingerprints registered to this mouse using the current computer will be erased. However, fingerprints registered from other computers remain unaffected.</p>

Statutory information

Limited Warranty and Return Policies

Dell Pro 5 Wired Fingerprint ESS Mouse MS526C come with a three-year limited hardware warranty.

For U.S. customers

This purchase and your use of this product is subject to Dell's end user agreement, which you can find at [Terms of Sale](#). This document contains a binding arbitration clause.

For European, Middle Eastern and African customers

Dell Pro 5 Wired Fingerprint ESS Mouse MS526C that is sold and used is subject to applicable national consumer legal rights, the terms of any retailer sale agreement that you have entered into (which will apply between you and the retailer) and Dell's end user contract terms.

Dell may also provide an additional hardware warranty – full details of the Dell end user contract and warranty terms can be found by going to [Terms of Sale](#), selecting your country from the list at the bottom of the "home" page and then clicking the "terms and conditions" link for the end user terms or the "support" link for the warranty terms.

For non-U.S. customers

Dell Pro 5 Wired Fingerprint ESS Mouse MS526C that is sold and used is subject to applicable national consumer legal rights, the terms of any retailer sale agreement that you have entered into (which will apply between you and the retailer) and Dell's warranty terms. Dell may also provide an additional hardware warranty – full details of Dell's warranty terms that can be found by going to [Terms of Sale](#), selecting your country from the list at the bottom of the "home" page, and then clicking the "terms and conditions" link or the "support" link for the warranty terms.

Revision history

The following table provides the revision history of this document.

Revision	Date	Description
A00	March 2026	Original publish date