



# EVOLVE<sup>2</sup> 50

Technology for life's new rhythm

© 2024 GN Audio A/S. All rights reserved. Jabra® is a trademark of GN Audio A/S. The Bluetooth® word mark and logos are registered trademarks owned by the Bluetooth SIG, Inc. and any use of such marks by GN Audio A/S is under license.

---

Made in China

MODEL: HSC175W



---

**Declaration of Conformity** can be found on  
[www.jabra.com/doc](http://www.jabra.com/doc)

1. Welcome.....	5
2. Jabra Evolve2 50 overview.....	6
2.1 Included accessories	
2.2 Optional accessories	
3. How to wear.....	8
3.1 Wearing styles	
3.2 Headset adjustment	
3.3 Foldable earcups	
4. What the LEDs mean .....	11
5. How to connect.....	12
5.1 Connect to computer	
5.2 Pair with a Bluetooth device*	
6. How to use .....	14
6.1 Calls & music	
6.2 Busylight(s)	
6.3 Mute/unmute using the microphone boom-arm	
6.4 Answer call using the microphone boom-arm	
6.5 Multiuse	
6.6 Multiple call handling	
6.7 Voice guidance	
6.8 Sidetone	
6.9 Factory reset	

7. Software and firmware .....	23
7.1 Jabra Direct	
7.2 Update firmware	
8. Support .....	24
8.1 FAQ	
8.2 How to care for your headset	
8.3 How to clean your Jabra device	

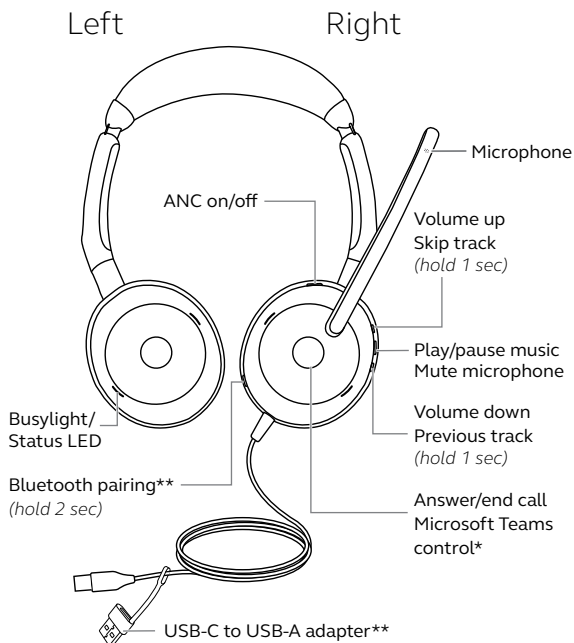
# 1. Welcome

Thank you for using the Jabra Evolve2 50. We hope you will enjoy it!

## **Jabra Evolve2 50 features**

- Designed for maximum comfort with Jabra AirComfort technology
- Silence your surroundings with Active Noise Cancellation (ANC)
- Work-anywhere professionalism, with noise-cancelling microphone technology
- Optimized sound for professional and personal use
- Fast plug-and-play and dual connectivity
- Certified for leading virtual meeting platforms

## 2. Jabra Evolve2 50 overview



\*Requires Microsoft Teams headset variant

\*\*Not available on all headset variants

## 2.1 Included accessories

---

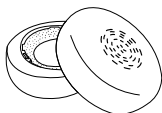


Carry pouch

## 2.2 Optional accessories

---

Optional accessories are available at [jabra.com/accessories](http://jabra.com/accessories)



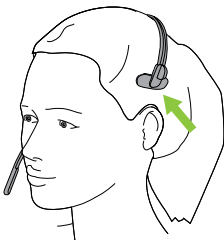
Replacement ear cushions

# 3. How to wear

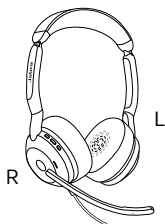
## 3.1 Wearing styles

---

### **Mono variant**



### **Stereo variant**





## 3.2 Headset adjustment

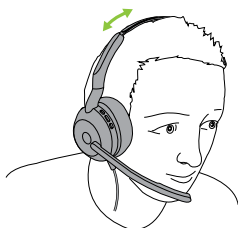
---

### Headband

Adjust the headband so that the headset fits your head comfortably.



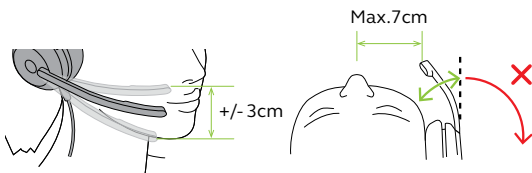
Stereo variant



Mono variant

### Boom arm

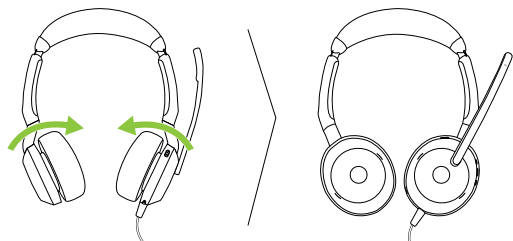
It is important to position the microphone close to your mouth. The boom arm can be bent for better positioning.



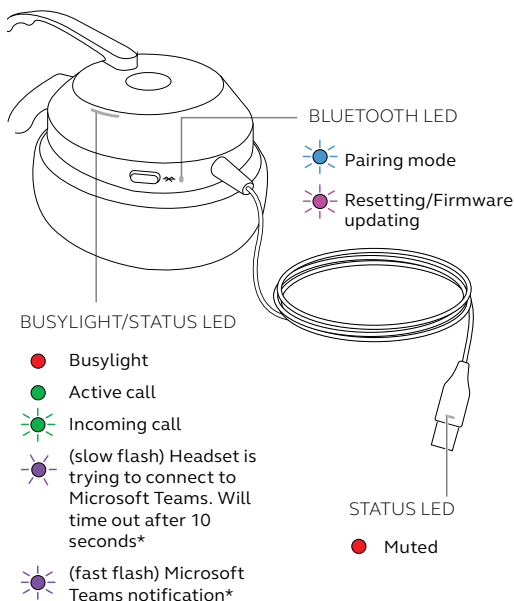
### 3.3 Foldable earcups

---

The earcups can be folded flat for easy storage.



## 4. What the LEDs mean



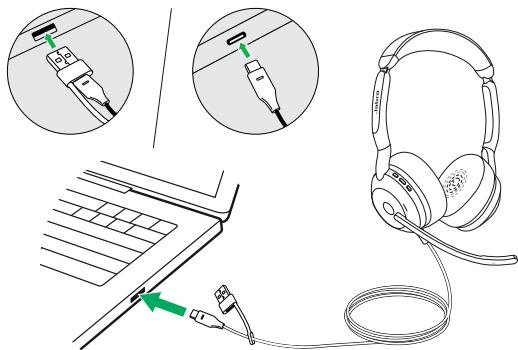
\*Requires Microsoft Teams headset variant

# 5. How to connect

## 5.1 Connect to computer

---

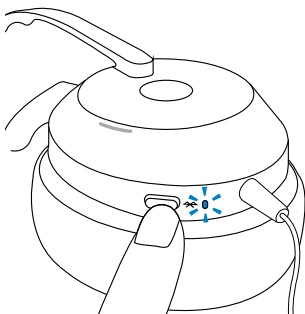
Plug the headset into a USB C or USB A port on your computer.



## 5.2 Pair with a Bluetooth device\*

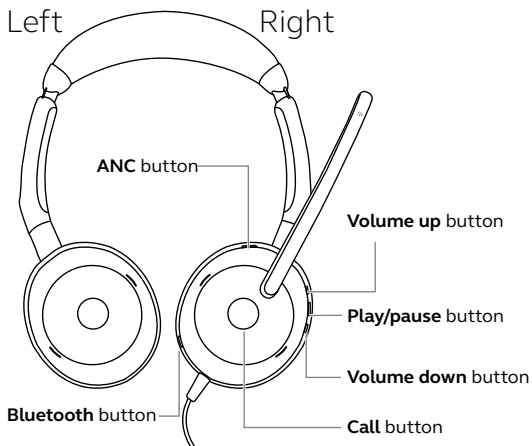
---

1. Connect the headset to a USB port on your computer.
2. Press and hold the **Bluetooth** button (2 sec) until the LED flashes blue.
3. Follow the voice-guided instructions to pair your Bluetooth device.





\*Not available on all headset variants



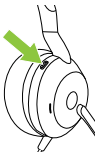
## 6. How to use



## 6.1 Calls & music

Right	Calls & music	
	Answer call	Press the <b>Call</b> button Alternatively, move the microphone down to answer a call
	End call	Press the <b>Call</b> button
	Reject call	Double-press the <b>Call</b> button
	Bring Microsoft Teams to foreground on computer	Press the <b>Call</b> button* (when signed into Microsoft Teams)
	Join active Microsoft Teams meeting	Press the <b>Call</b> button* (when signed into Microsoft Teams)
	Raise/lower hand during a Microsoft Teams meeting	Press and hold (1 sec) the <b>Call</b> button* (during a Microsoft Teams meeting)

\*requires Microsoft Teams headset variant

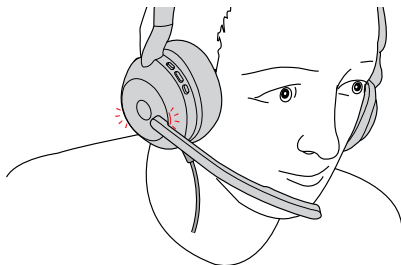
	Play/pause music	Press the <b>Play/pause</b> button when listening to music
	Mute/unmute microphone	Press the <b>Play/pause</b> button when on a call
	Adjust volume	Press the <b>Volume up</b> or <b>Volume down</b> button, when listening to music or on a call
	Next track	Press and hold (1 sec) the <b>Volume up</b> button
	Restart track or previous track	Press and hold (1 sec) the <b>Volume down</b> button to restart the current track
		Press and hold twice to play the previous track
	Busylight on/off	Press the <b>Volume up</b> and <b>Volume down</b> buttons at the same time
	ANC on/off	Press the <b>ANC</b> button



## 6.2 Busylight(s)

---

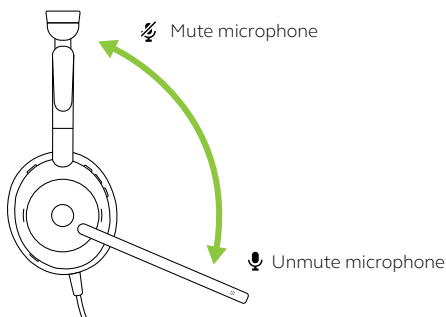
To indicate to colleagues that you are busy, the Busylight(s) on the headset automatically light up red when you are on a call. To manually switch the Busylight(s) on/off, press the **Volume up** and **Volume down** buttons at the same time.



## 6.3 Mute/unmute using the microphone boom-arm

---

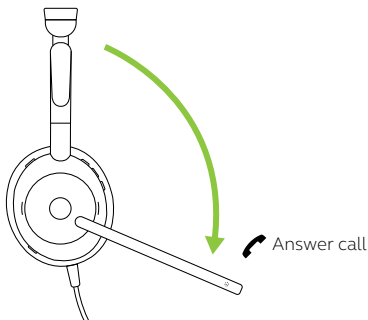
The headset microphone can be muted by moving the microphone boom-arm up, or unmuted by moving it down. This feature is on by default, and can be disabled using Jabra Direct on your computer.



## 6.4 Answer call using the microphone boom-arm

---

An incoming call can be answered by moving the microphone boom-arm down, close to your mouth. This feature is on by default, and can be disabled using Jabra Direct on your computer.




## 6.5 Multiuse

---

The headset can be paired with up to 8 Bluetooth devices, and connected to one Bluetooth device. The headset can accept multiple incoming calls from either device.

## 6.6 Multiple call handling

The headset can accept and handle multiple calls at the same time.

Right	Multiple call handling	
	End current call and answer incoming call	Press the <b>Call</b> button
	Put current call on hold and answer incoming call	Hold (2 secs) the <b>Call</b> button*
	Switch between held call and active call	Hold (2 secs) the <b>Call</b> button*
	Reject incoming call, when on a call	Double-press the <b>Call</b> button

\*UC headset variants only

## 6.7 Voice guidance

---

Voice guidance are announcements that will guide you through set up, or will give you headphone status updates.

Voice guidance is enabled by default.

Right

Voice guidance



Turn voice  
guidance on/off

Press and hold  
(5 sec) the **ANC**  
button and the  
**Volume up** button  
until you hear an  
announcement in the  
headset

---

Alternatively, use Jabra Direct on your computer, to turn Voice guidance on or off.

For the latest list of supported languages, refer to Jabra Direct on your computer.

## 6.8 Sidetone

---

Sidetone enables you to better hear your own voice when you are on a call.

Sidetone settings can be configured using Jabra Direct on your computer.

## 6.9 Factory reset

---

Resetting the headset clears the list of paired devices and resets all settings.

Right

Reset headset



Reset pairing  
list and settings

Ensure the headset is powered on and you are not on a call. Then press and hold (3 sec) the **Call** button and the **Volume up** button simultaneously until the LED lights up pink and you hear an announcement in the headset

## 7. Software and firmware

### 7.1 Jabra Direct

---

Jabra Direct is a desktop application designed to support, update and manage Jabra devices to ensure their optimal performance.



Download the latest free version from [jabra.com/direct](https://jabra.com/direct)

### 7.2 Update firmware

---

Firmware updates improve performance or add new functionality to Jabra devices. Jabra Direct will notify you when firmware is updating, or when a firmware update is available. Connect the Evolve2 50 to a computer using the USB cable.

## 8. Support

### 8.1 FAQ

---

View the Jabra Evolve2 50 FAQ, certifications, and technical specifications at [jabra.com/support](https://jabra.com/support)

### 8.2 How to care for your headset

---

- Always store the headset in the supplied case.
- It is recommended to keep the headset between -10°C and 50°C (14°F and 122°F).



## 8.3 How to clean your Jabra device

---

Keep your product clean by following these best practices for hygiene.

1. Apply normal dish soap and water to a cloth, making sure you wring out excess liquid so the cloth is not dripping wet. Use soap and water only – do not use strong cleaning agents.
2. Gently wipe the product, making sure there is not a layer of suds on the surface.
3. Let it rest for at least one minute.
4. Rinse the surface by wiping it with a slightly damp cloth using water only.
5. Let it dry.
6. When the product is not in use, keep it clean by avoiding contact with dirty surfaces and storing it in the carry pouch.