



Infinite
Peripherals®

MP34

Mobile Printer with Wi-Fi & Bluetooth



MP 34 Mobile Printer USER MANUAL

CONTACT INFORMATION

***Mobility Sales/
Technical Support Center***

Infinite Peripherals, Inc.
17681 Mitchell N
Irvine, CA 92614
Toll Free: (866) 278-7860
Office: (949) 222-0300

***Headquarters/
Main Warehouse***

Infinite Peripherals, Inc.
2312 Touhy Ave.
Elk Grove Village, IL 60007
Toll Free: (800) 278-7860
Office: (847) 818-1260
Fax: (847) 818-1287

Email: info@ipcmobile.com
Web: ipcmobile.com



**Infinite
Peripherals®**

Mobilize Your Enterprise®

Note: *iOS device and other items shown sold separately.*

Contents

CONTACT INFORMATION	2
COMPATIBILITY	5
GUIDELINES FOR USE	6
Environmental.....	6
Mechanical	6
Electrical	6
Operational	7
BOX CONTENTS	8
ACCESSORIES	8
GETTING STARTED	9
Warnings, Cautions, and Notes.....	9
DEVELOPING APPLICATIONS	10
ABOUT YOUR MP34	11
ADVANCED MANUAL BUTTON (AMC)	12
AMC Button Up.....	12
AMC Button Down	12
INSTALLING THE BATTERY	13
CHARGING THE BATTERY	14
Charging Lamp status.....	14
REMOVING THE MP34 BATTERY	15
STATUS AND OPERATIONAL MODES	16
USING YOUR MP34	17
Installing a Standard Paper Roll	17
ASSEMBLE BELT STRAP AND BRACKET	18
DIAGNOSTIC SELF-TEST	19
(OPTIONAL) PERIPHERALS CONNECTION	20
INTERFACE CABLE CONNECTION	21
CLEANING THE PRINTER HEAD	22
CLEARING PAPER JAMS	23
TECHNICAL SPECIFICATIONS	24
ROLL MEDIA SPECIFICATIONS	25

BLACK MARK DIMENSIONS26
WARRANTY 27
DISCLAIMER..... 27
PRODUCT RETURNS AND SERVICING 28
SYMBOLS FOR USE 29
FEDERAL COMMUNICATIONS COMMISSION (FCC)30
 Federal Communications Commission Statement 30
 FCC RF Radiation Exposure Statement 30

COMPATIBILITY

Made for Bluetooth® device with iOS.

TRADEMARK CREDITS

Infinite Peripherals, Mobilize Your Enterprise, Linea Pro, Infinea, Infinea Tab and Infinea Omni are trademarks of Infinite Peripherals, Inc. All other trademarks are the property of their respective owners.

GUIDELINES FOR USE

Environmental

Avoid using the printer under the following conditions, as it may result in printer failure and/or serious personal injury.

- Anywhere printer may be exposed to excessive dust, moisture, or direct sunlight/heat.
- Slanted surfaces, or those surfaces which may be subject to strong shocks or vibrations.
- Environments with temperatures over 60°C or below -20°C, or with a relative humidity of 85% or more.
- Areas subject to electromagnetic noise or corrosive gas.
- If there is condensation on the thermal head. If condensation is present, the power should be kept off until the condensation evaporates completely.

Mechanical

Use caution when handling the thermal head to prevent heat elements and driver IC from exposure to static electricity.

We recommend you do not do the following

- Touch the dot line on the thermal head/driver IC with metal, sandpaper, etc., or your fingers. This may cause damage and/or contamination and result in reduced print quality.
- Use volatile chemicals such as thinners or benzene for maintenance work.
- Open the paper cover while printing.
- Pull the paper out of the printer forcibly when the printer cover is closed.
- Use loose paper or block the paper exit of the printer. It may cause the paper to jam. **Note:** If a paper jam occurs, turn off the power to the printer.
- Attempt to disassemble or repair the printer, AC adapter, or power cord yourself. See [Product Returns and Servicing](#) for additional information.

Electrical

If the printer is not in use, or any of the following conditions exist, turn the printer power OFF and disconnect the AC adapter from the outlet.

- Smoke, unusual noises or odd smells are emitted by the printer.
- When metallic objects are dropped, or any liquid is spilled, inside of the printer.

We recommend you do not do the following

- Connect or disconnect the AC adapter with wet hands. This may result in electric shock, short circuit and failure.
- Use any AC adapter or power cord other than those provided with the printer and/or specified by an IPC account representative or certified service center.
- Bend the AC power cord or place heavy objects on top of it. Doing so may cause damage to the cord and/or cause fire or electric shock.
- Use a damaged AC power cord due to risk of fire or electric shock.
- Drop any metallic objects or spill coffee, water or any other liquid onto the printer.
- Touch the thermal head as it may be very hot immediately after printing. Be sure that the thermal head is cool before replacing the paper or cleaning the thermal head.
- Remove the interface cable or AC adapter from the connector or the receptacle by gripping the connector or the AC plug. Never pull the cable itself, as it may cause damage to the cable and/or adapter.

Operational

Use the specified paper or paper of an equivalent type. Use of other paper may reduce life of the thermal head and cause a decrease in printing quality. Sodium(Na+), potassium(K+) and chlorine(Cl-) containing substances can remarkably reduce the life of the thermal head.

When pasting printed pages, use water-based glue, for example, starch glue, synthetic glue, and so forth.

The surface of thermal paper has been specially treated with a chemical agent to produce coloring by thermal chemical reaction.

We recommend you do not do the following

- Expose the paper to bright light for extended periods of time.
- Expose the paper to organic solvents.
- Expose the paper to vinyl chloride film, erasers or adhesive tapes for extended periods of time.
- Store paper in areas with high temperatures, high humidity, damp area or areas with exposure to direct sunlight. The paper should be stored in a cool, dry and dark place.
- Store the paper on diazo print paper or wet, freshly made paper copies.
- Handle the paper with wet hands or hard objects as it may result in tears, fingerprints or smudges.



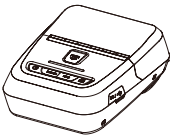
Continuous use of the printer under improper conditions could lead to printer failure, fire and/or electric shock and may void the warranty. If the fault condition continues, contact an authorized service center for further assistance.

BOX CONTENTS

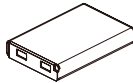
Before using your MP34 printer

- Remove the device and any included accessories from the shipping carton and verify the contents against your packing list.
- Retain all packing materials, invoice, and bill of lading. These may be required to return the unit for servicing later, or to process a claim with the shipping carrier.
- Carefully inspect the contents inside of the packaging for any signs of damage. If there are signs of damage, do **not** attempt to use it. Notify your account executive or contact Infinite Peripherals technical support at support@ipcmobile.com.
- Ensure the battery pack is fully charged prior to initial use.

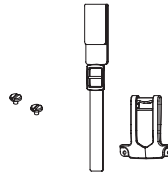
Your MP34 printer includes these items:



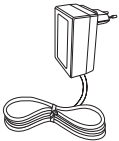
MP34 Printer (1)



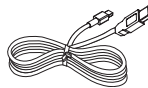
Battery (1)



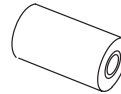
Belt Strap & Bracket (1)



Charger (1)



USB Cable (1)



Roll of paper (1)

Note: *Box contents may vary based on ordered configuration.*




ACCESSORIES

Please visit our website at ipcmobile.com, or contact your Infinite Peripherals account representative, for additional information about our current and future product accessory offerings.

GETTING STARTED

Warnings, Cautions, and Notes

Please observe the Warnings, Cautions, and Notes presented throughout this guide. An explanation of these symbols:

Symbol	Description	
	WARNING:	Actions may result in a serious outcome (e.g., injury, death or other adverse affect) to the user.
	CAUTION:	Special care is required to avoid damage to the product or other property.
	Note:	<i>Important points and tips about the product are being provided.</i>

First Steps

The MP34 allows you to print information from your smartphone over Wi-fi or Bluetooth.

The following helps prepare the MP34 mobile printer for use.

Step	Purpose	Additional Information
1. Install and Charge the MP34	The Lithium Ion battery pack shouldbe fully charged before initial use.	See Installing the Battery
2. Load the MP34 Print Media (thermal paper)	Use of the printer requires the installation of thermal paper for printing.	See Using Your MP34
3. Install Software	Printer features require software to be installed onto your mobile device.	See Developing Applications
4. Setup Bluetooth or Wi-Fi Connection	Set up Bluetooth pairing to allow MP34 to communicate over Bluetooth connection.	See manual section: Peripherals Connection

DEVELOPING APPLICATIONS

Software is not provided with your MP34 mobile printer. Please contact your reseller or Infinite Peripherals for Third Party software solutions.

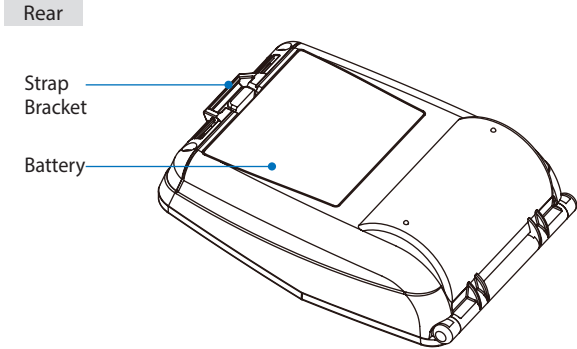
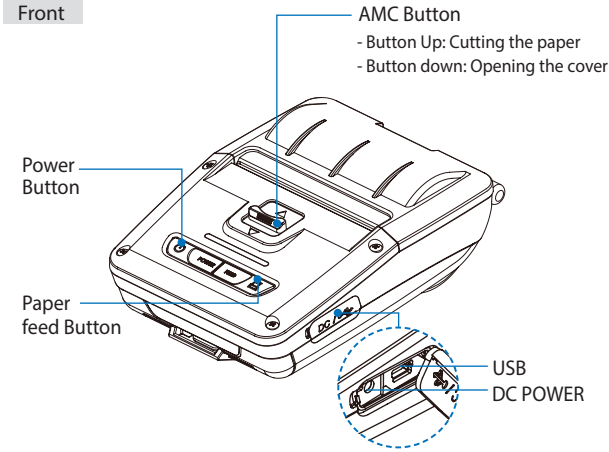
Integrating the MP34 with your mobile application requires the use of the Infinite Peripherals Universal SDK. The SDK incorporates an API specifically for developing applications to use the barcode scanner, magnetic strip and contactless reader functionalities of the MP34.

For additional details on using the Infinite Peripheral Universal SDK, please refer to the SDKs documentation.

For the latest Infinite Peripheral Universal SDK please visit our developer portal at:

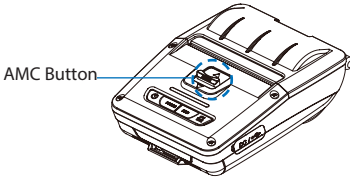
<https://developer.ipcmobile.com/>

ABOUT YOUR MP34



ADVANCED MANUAL BUTTON (AMC)

You can easily cut excess paper by pressing the AMC button down. This button is located on the top of the printer in the center.



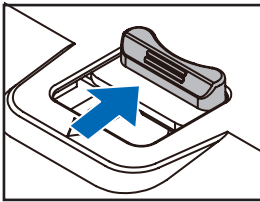
Caution: Do not place your fingers in the printer head when the paper advances as this may cause injury.

AMC Button Up

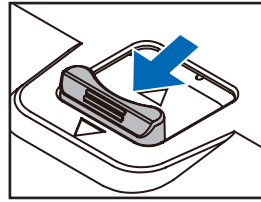
- Press the AMC button up to cut paper.

AMC Button Down

- Press the AMC button down to open the cover.
- This allows you to clean the printer head, replace paper, or fix a paper jam.



Button Up



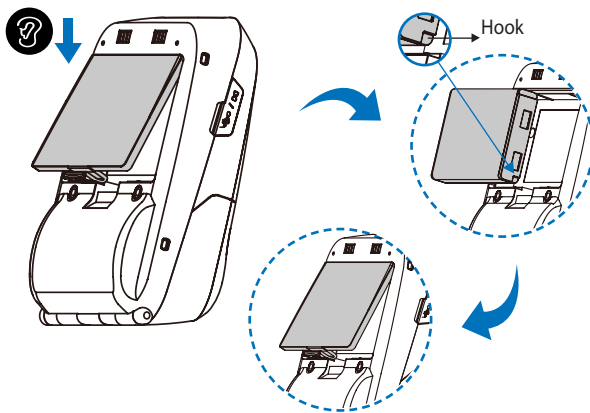
Button Down

INSTALLING THE BATTERY

Before operating the MP34 printer, install the Lithium Ion rechargeable battery. Ensure the battery pack is charged for at least 3 hours and 30 minutes via the printer or in the optional external cradle.

Note: Because the battery is not charged during shipment, ensure to charge it before first use.

1. Connect the input cord to the AC adapter.
2. Align the battery hook on the back of the printer.
3. Lock the battery in place. The upper cover clicks close.



CHARGING THE BATTERY

Use the approved AC adaptor cables shipped with the printer to prevent electrical damage to the printer and/or battery pack. Be aware of the following caveat:

- Printer will not operate when it's connected to the charger.
- Battery must be installed for operation.
- Do not turn on the printer during charging.
- Do not connect the charger when the printer is charging.

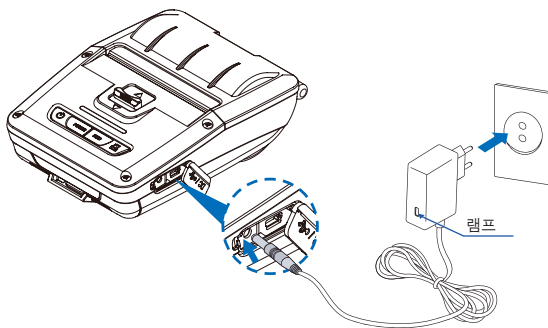
To charge the battery

1. Turn the printer off.
2. Open the DC jack cover, and then connect the jack to the printer.
3. Plug the power cord into an appropriate power source.

Charging Lamp status

- Red during charging
- Solid Green when charging complete
- Blinks green if problem charging

After completing initial battery charge, monitor battery status and recharge, as needed. If the operating time of a fully charged battery becomes too short, battery may need to be replaced.



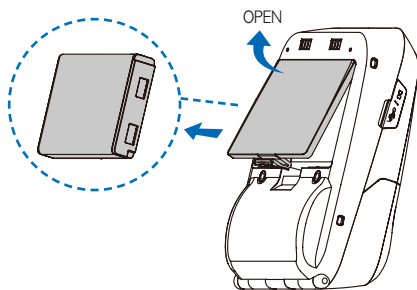
REMOVING THE MP34 BATTERY

For your safety, turn off the printer before removing the battery.



Disconnect all cables including the AC adaptor and turn off the printer before attempting to remove the battery. Dispose of used batteries in accordance to federal law. This may include disposing of the batteries at a recycling center or hazardous waste collection site.

1. Open the cover to the battery compartment.
2. Push in the locking lever to eject the battery, then slide the battery out to remove.
3. Place a new battery pack in the battery compartment and replace the cover.



STATUS AND OPERATIONAL MODES

The MP34 display buttons are used to operate the printer.

Note: The battery status LEDs indicate the amount of power remaining. Actual runtime remaining depends on the output content, distance to computer, and so forth.



The following table describes the buttons and their actions.

Button Name	Action
Power	<ul style="list-style-type: none">• Turns power on/off/wakes from sleep mode.• Press and hold for 3 seconds to turn power off.
Paper Feed	<ul style="list-style-type: none">• Manually feeds paper into printer, perform self-tests, and hexadecimal dumping.
Battery Status	<ul style="list-style-type: none">• Batt LED lit, the battery is fully charged.• When you hear a beeping sound and LED light is turned off, the battery is at the lowest level.• Battery is not charged, the printer turns off.
Error	<ul style="list-style-type: none">• Red light on, paper is empty or paper cover is open.
Link/Power	<ul style="list-style-type: none">• Link: LED blinks.• Power On: Green indicates power on or charging complete.• Power Off: No LED.

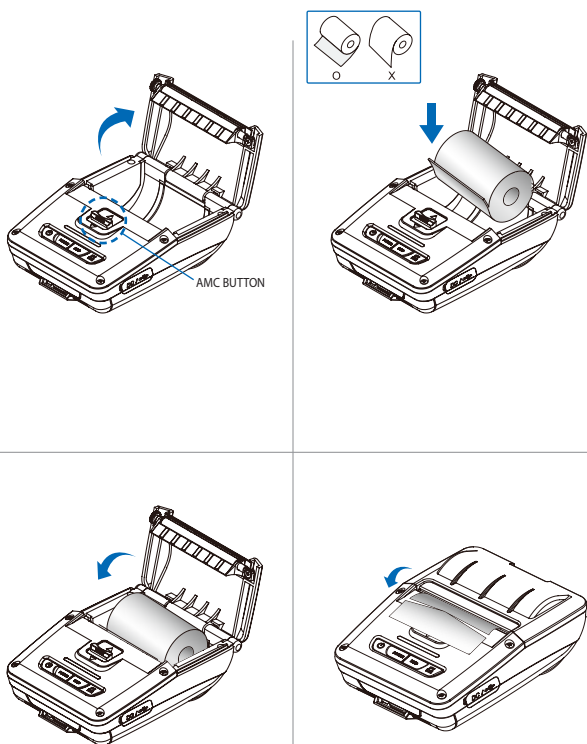
Installing a Standard Paper Roll

Before replacing the paper roll or closing the cover, ensure the thermal head is cool. The thermal head may be very hot immediately after printing.

Caution: *Touching the thermal head while hot may result in burn injuries.*

To install a standard paper roll

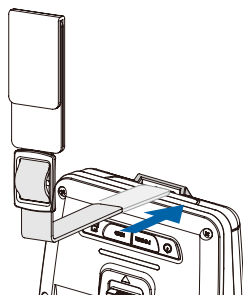
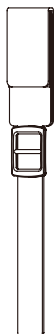
1. To open the paper cover, press the Advance Manual Cutter (AMC) button down.
2. Gently insert the new paper roll so it unrolls from the bottom. *Remove the paper core when empty.*
3. After the paper is inserted, pull out a short length of paper, close the printer cover, and then press the AMC button again to rise it up, and then cut the extra paper.
4. Close the cover with both hands to ensure it's completely closed so the printer operates correctly.



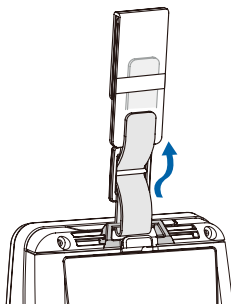
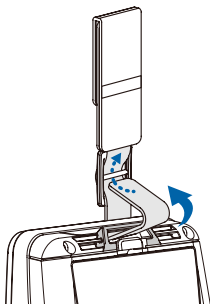
ASSEMBLE BELT STRAP AND BRACKET

Use the belt strap and bracket to carry the printer on your belt.

1. Prepare the belt strap.
2. Place the strap into the bracket hole.
3. Turn the strap and printer over, and then place the strap onto the hook.
4. Adjust the strap length, as desired.



1 2
3 4



DIAGNOSTIC SELF-TEST

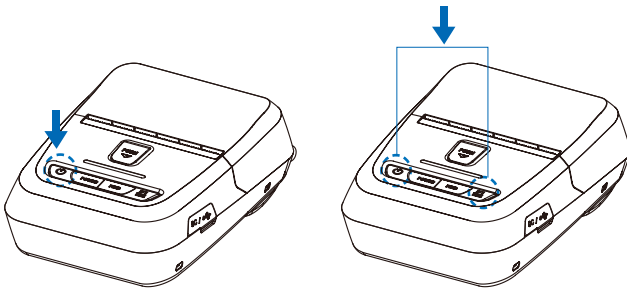
You can perform a self-test at any time to print out the status of your printer for troubleshooting issues. The self-test provides information about the control circuit, mechanism, print quality, and ROM version.

To protect the motor from overheating, stop the printer for 30 seconds after continuous printing 1.5 meters (4.92 ft).

Note: Press the Feed button twice for Hex mode.

1. Turn off the printer by pressing the Power button for 3 seconds.
2. Press both the Feed and Power buttons at the same time. The self-test prints automatically.

Infinite Peripherals, MP34



Printer Configuration Info.
F/W Version : v1.01
FontRom Version : v1.3
BN(Adj) : 154(129)
Sensor Mode: [JOURNAL]
Battery : 7.5V(757),offset:0
Timeout(Sleep) : 60 sec
Ext' Flash : Exist
H/W Version : v2.0
SDRAM : 8MB
Linerless : Disabled

Emulation Configuration Info.
Emulation : CPCL
Print Density : 0
Top of Form : 0
Top Margin : 0
Left margin : 0

USB Interface
Version 2.0 Full speed
compliant
Product String : MP-34

Bluetooth Interface
Version : v0174
Device Name : SN_e366
Mode : SPP_IAP_MODE
Pairing Info : SSP_MODE
Class Type : PRINTER_CLASS
Numeric comparison: Disabled
Auto connection: Enabled
BLE : Disabled
Address : BB:0b:0f:0c:e3:66

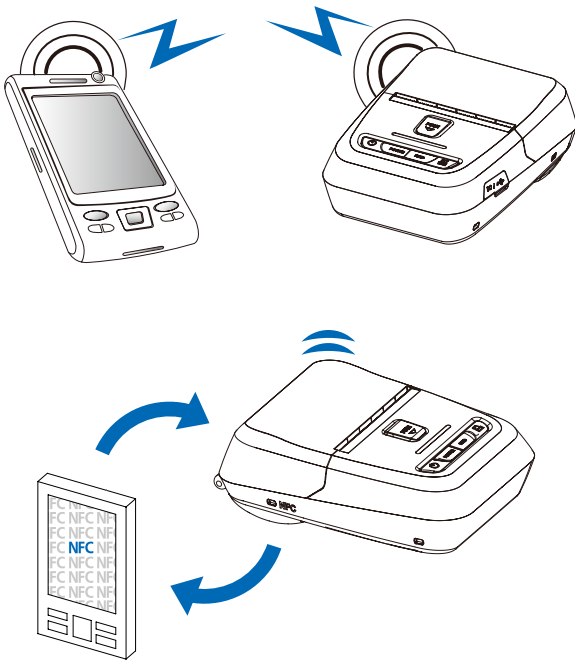


Press FEED button to
enter HEX-DUMP mode.

(OPTIONAL) PERIPHERALS CONNECTION

Your printer can communicate with other devices via Bluetooth, Wi-Fi, or Near-field communication (NFC).

- Connect the printer with devices equipped with Bluetooth or Wi-Fi communication such as PDDs, PCs, and so forth.
- NFC connection is compatible only with Bluetooth.

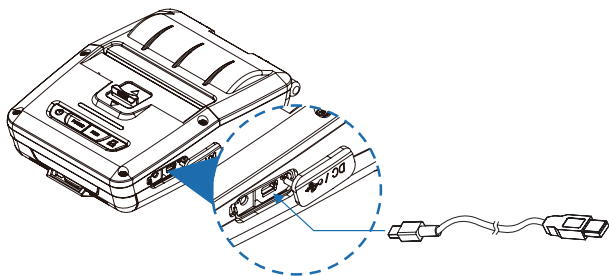


INTERFACE CABLE CONNECTION

You can connect the USB cable from the printer into any device such as a PDA, PC, and so forth.

To connect the interface cable

1. On the back side of the connector cover, connect the USB cable to the printer connector.
2. Plug the other end of the interface cable into the USB port on the device.



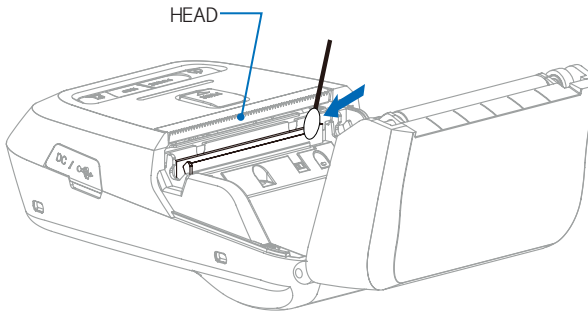
CLEANING THE PRINTER HEAD

Follow these guidelines to ensure the printer head is dust-free:

- Before cleaning, turn off the power to the printer.
- Wait approximately 10 minutes before cleaning. The printer head can be very hot when the printer is running.
- During cleaning, do not touch the heated part of the printer head with your fingers.
- Clean the printer with an alcohol moistened cotton swab.
- After cleaning the printer head, wait 2 minutes or until it is completely dried before turning the power on.

To clean the printer-head

1. Moisten an applicator swab with isopropyl alcohol, and then clean the printer-head to remove any dust.
2. After cleaning is complete, allow the printer to dry before installing the paper.
3. Close the printer cover.



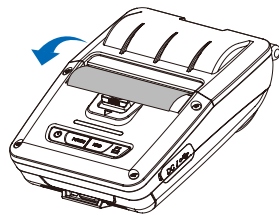
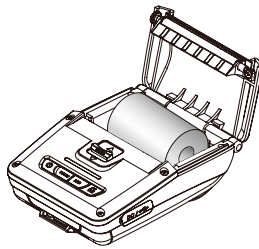
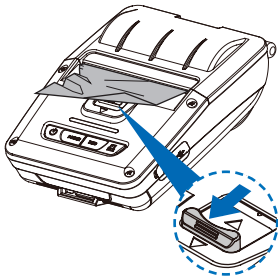
CLEARING PAPER JAMS

When using any printer, it's inevitable paper jams occur. This is when paper gets stuck or lodged into the printer head and is unable to eject.

To clear a paper jam

1. Press the AMC button down to open the printer cover.
2. Remove the jammed paper. Be careful as the printer head is hot.
3. Close the cover. Printer is ready to use again.

Note: Ensure the printer cover is closed completely before using the printer. The cover is closed correctly when you hear a click.



TECHNICAL SPECIFICATIONS

MECHANICAL	
Compatibility	Direct thermal printer
Printing Speed/Resolution	100mm/s maximum/203 DPI
Weight <i>(without iOS device)</i>	415.3g with battery
Dimensions	80mm x 119.4mm x 44mm
Buttons	<ul style="list-style-type: none"> • Power • Feed
ELECTRICAL	
Barcodes	ESC/POS 1D: EAN-8, EAN-13, Code39, ITF, UPC-A, UPC-E, Codabar, Code93, Code128 2D: QR, PDF347
	CPCL 1D: LUPC-A(+2,+5), UPC-E(+2, +5), EAN13(+2, +5), EAN8(+2,+5), Code39 etc. (CPCL) 2D: QR, PDF347, MicroPDF347, Maxicode, Datamatrix, Aztec, TLC39, RSS14
	ZPL 1D : Code11, ITF, Code39, Planet, EAN-8, UPC-E, Code93, Code128 etc. (ZPLII) 2D: QR, PDF347, MicroPDF347, Maxicode, Datamatrix, Aztec, TLC39, RSS14
Battery Capacity	Li-ion Input: AC100-2400V, 50/60Hz Output: 8.4V, 800-1400A Charging time: 2 hrs (MSF+ICR: 2.5 hrs)
Power Consumption	8.4W
Emulation	ESC/POS, CPCL, ZPL commands
Interface	Standard USB (Optional) Bluetooth smart ready v4.2, Wi-Fi (802.11 a/b/g/n, NFC)
CERTIFICATIONS	
General	CE/CB/FCC/IC/UL/KC
ENVIRONMENT	
Temperature Operation Storage	-10-50C
	-20-60C

ROLL MEDIA SPECIFICATIONS

Core

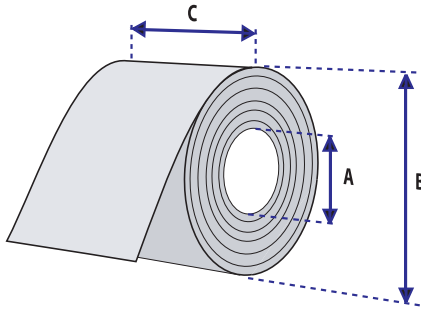
Diameter(A) – 12.5mm

Roll

Max.Diameter(B) – 50mm

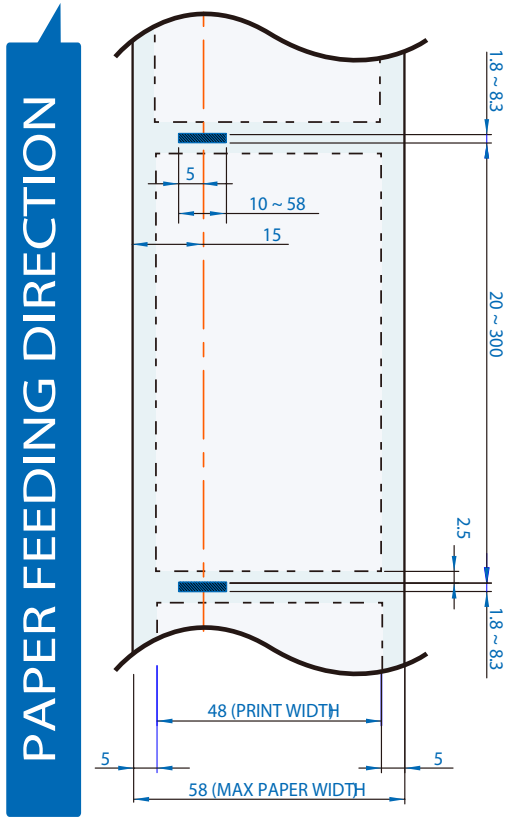
Max.Media Width(C) – 80mm

Min.Media Thickness – 0.06mm



BLACK MARK DIMENSIONS

This illustrates the dimensions of the paper used in the MP 34 printer.



WARRANTY

Infinite Peripherals does not warrant, and is not responsible for, any damage to the MP 34 (“Product”) or the assembled iOS device as a result of liquid or solid particle intrusion into the Product, or damaged caused by dropping the Product with the assembled iOS device. If a material or workmanship defect arises with regard to any Infinite Peripherals product, and a valid claim is received within the Warranty Period, Infinite Peripherals (at Infinite Peripherals’ sole discretion) will (1) repair the Product using new or refurbished parts or (2) replace the Product with a new or refurbished Product. For purposes of this limited warranty, “refurbished” means a product or part that has been substantially returned to its original specifications. In the event of a defect, these are your exclusive remedies.

DISCLAIMER

NO WARRANTY. This technical documentation is provided As Is. Furthermore, the documentation does not represent any commitment on the part of Infinite Peripherals, Inc. and does not warrant that it is accurate, complete or error-free. Any use of the technical documentation is at the risk of the user. Infinite Peripherals, Inc. reserves the right to make changes to specifications or other information contained within this document, without prior notice, and the reader should in all cases consult Infinite Peripherals, Inc. to determine whether any such changes have been made. Infinite Peripherals, Inc. shall not be liable for technical or editorial errors or omissions contained herein; nor for incidental or consequential damages resulting from the furnishing, performance, or use of this material. Infinite Peripherals, Inc. does not assume any product liability arising out of, or in connection with, the application or use of any product or application described herein.

PRODUCT RETURNS AND SERVICING











Use the link provided to create an account and gain access to our Knowledge Base and online support services. Through our online support center, you'll be able to download files, open a Support Ticket, manage your RMAs, view your account Profile and subscribe to Alerts.

To request a RMA

1. Create a user account in the RMA Support Portal at <http://ipcmobile.com/support/rma-support.html>.
2. Login to your user account and click **Create RMA Request**.
3. Read the instructions provided and complete the online request form.
4. Note the assigned **RMA number** and write it clearly on your shipping carton.

Ship your equipment back to us at the address provided.

SYMBOLS FOR USE

SYMBOL	DEFINITION
	Consult Instructions for Use
	Manufacturer
	Manufacture Date
	Serial Number
	Part Number
	Waste Electrical and Electric Equipment
	Do Not Autoclave
	Do Not Incinerate
	Mark of conformity to European Union Directives
	Complies with part 15 of the FCC rules

Federal Communications Commission Statement

15.21

You are cautioned that changes or modifications not expressly approved by the part responsible for compliance could void the user's authority to operate the equipment.

15.105(b)

This equipment was tested and found to comply with the limits for a Class B digital device, pursuant to part 15 of the FCC rules. These limits are designed to provide reasonable protection against harmful interference in a residential installation. This equipment generates, uses, and can radiate radio frequency energy and, if not installed and used in accordance with the instructions, may cause harmful interference to radio communications. However, there is no guarantee that interference will not occur in a particular installation. If this equipment does cause harmful interference to radio or TV reception, which can be determined by turning the equipment off and on. The user is encouraged to try to correct the interference by or more of the following:

- Reorient or relocate the receiving antenna.
- Increase the separation between the equipment and receiver.
- Connect the equipment into an outlet on a circuit different from that to which the receiver is connected.
- Consult the dealer or an experienced radio/TV technician for help.

Operation is subject to the following:

1. This device may not cause interference, and
2. It must accept any interference, including interference that may cause undesired operation of the device.

FCC RF Radiation Exposure Statement

This equipment complies with FCC radiation exposure limits set forth for an uncontrolled environment. End users must follow the specific operating instructions for satisfying RF exposure compliance. This transmitter must not be co-located or operating in conjunction with any other antenna or transmitter.