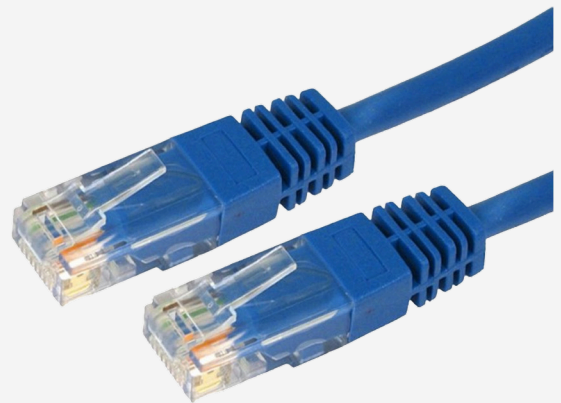


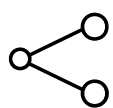
4XEM™ **Product Data Sheet**


10FT CAT6 RJ45 UTP Pure Copper Patch Cable (Blue)



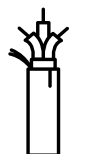
Engineered for reliable, high-speed data transmission with durable, long-lasting performance for demanding network environments.

Key Features

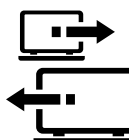
 RJ-45 Connectors
EIA/TIA 568B Pinout

 RoHS Compliant

 Pure Copper
construction

 PVC Jacket rated
FT1, UL

 30 μ m Gold-Plated
Contacts

 Up to 5Gbps Data
transfer speed

Technical Highlights

SKU Name	4XC6PATCH10BL
Warranty	Lifetime
Cable Properties	Pure Copper, Stranded conductors with PVC jacket
Compliances	FT1/UL Fire Rating, RoHS

Application(s)

Built for network technicians, system integrators, and office environments, this cable delivers dependable, high-speed performance for routers, switches, servers, and workstation setups.

Visit 4XEM.com

Contact Brandon Hegarty 4XEM Sales Manager
1-866-999-4936 ext.113 bhegarty@4xem.com

4XEM™ Product Data Sheet

Technical Specifications

Warranty Information	Warranty	Lifetime
Performance	Cable Rating Certifications Standards Data rate Support Bandwidth ratings PoE Support testing	CAT6 - 250 MHz RoHS Compliant TIA/EIA-568B.2 250 MHz 5 Gbps Pass
Connector(s)	Connector A Connector B Connector Plating Boot Type	RJ-45 Male - TIA/EIA 568B Pinout RJ-45 Male - TIA/EIA 568B Pinout 30 µin Gold-Plated Contacts Blue Overmold Strain relief
Hardware	Cable Jacket Material Cable Jacket Fire Rating Cable build Cable Shielding	PVC (Polyvinyl Chloride) FT1, UL UTP 4 Pair No
Physical Characteristics	Color Conductor Type Wire Gauge Bend Radius Durability Operating Temperature Storage Temperature Cable OD Cable Length Weight of Product	Blue Pure Copper, Stranded (Patch Cable) 26 AWG 20D Ten years 32 °F to 140 °F (0 °C to 60 °C) -4 °F to 167 °F (-20 °C to 75 °C) 0.2 in [5.2 mm] 10 ft [3.05 m] 3.18 oz [90.4 g]
Packaging Information	Package Type Package Height Package Width Package Length Shipping (Package) Weight	Poly Bag 6.69 in [170 mm] 7.87 in [200 mm] 0.57 in [14.5 mm] 3.28 oz [93 g]
What's in the Box	Included in Package	10 ft Cat 6 Patch Cable - Blue
Notes	Notes	

* Product appearance and specifications are subject to change without notice.

* Weights and measurements are approximate.