

APC

APC

APC

# Smart-UPS Lithium-ion 230V

Lower operating costs.  
Perfect for distributed IT.

Trusted line interactive protection with 3x  
the battery life from 500VA to 3000VA



[apc.com/lithium-ion](https://apc.com/lithium-ion)

Not for consumer use.

Life Is On

Schneider  
Electric

# The world's most popular network and server UPS now with Lithium-ion batteries



APC™ award-winning Smart-UPS™ is the most popular UPS in the world for servers, storage and network power protection. Smart-UPS provides availability and manageability to your network allowing you to focus on business growth instead of business downtime. Trusted to help protect essential data and equipment from power problems by supplying clean and more reliable network-grade power.

Smart-UPS's patented green mode provides high efficiency at low, medium and high load levels. This makes them ideal for multi-core or virtualized servers that have varying load consumption all while saving utility costs. Managed outlet groups allow segmented load control to power on or off your equipment in series, as well as load shedding to preserve battery power for essential connected equipment or reboot a hung device without impacting other equipment. Lithium-ion batteries provides 3X in battery life, better performance at higher temperatures and Total Cost of Ownership savings compared to valve-regulated lead-acid (VRLA) batteries.

# Save up to 50% on Total Cost of Ownership when using Smart-UPS Lithium-ion UPS solutions

APC Smart-UPS with Lithium-ion technology enables IT professionals to lower Total Cost of Ownership (TCO) by minimizing UPS maintenance and offering remote UPS management across distributed environments.

Why should you consider Smart-UPS Lithium-ion?



3X Longer life expectancy than VRLA batteries



Help to eliminate the cost of battery replacement, labor, shipping and recycling



Save on TCO by up to 43%\*



Better battery performance at ambient temperatures, up to 40°C



Up to 65% lighter batteries for easier handling and installation



Remote UPS management options



Five-year factory warranty on the UPS and battery



Battery management system and certifications provide higher level of performance

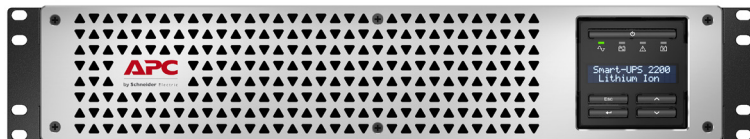
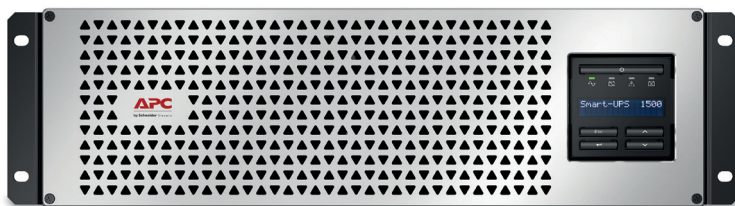
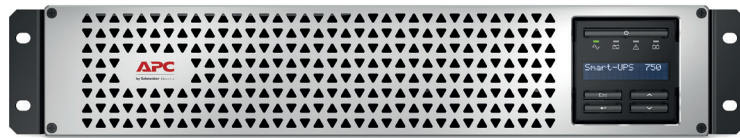


Greater efficiency in charge and discharge of the batteries

\*Subject to change based on market fluctuations and price adjustments.

# Smart-UPS Lithium-ion features

Intelligent and efficient network power protection. Ideal for servers, point-of-sale, routers, switches, hubs and other network devices.



## High-efficiency green mode

Achieves up to 98% efficiency which minimizes utility and cooling costs without compromising UPS performance or reliability.

## Network-grade power

Provides stable power conditions by filtering noise, automatic voltage regulation (AVR) and surge protection.

## LCD display

Intuitive interface provides detailed information with ability to configure locally.

## Built-in energy meter

Measures energy use and displays UPS efficiency in operating modes for easy tracking.

## Intelligent battery management system

Monitoring at the cell level to manage voltage helps Lithium-ion batteries provide a higher level of performance.

## Short-depth design

The short-depth UPS form factor on 1.5kVA models and below allows for compatibility with wall mount racks.

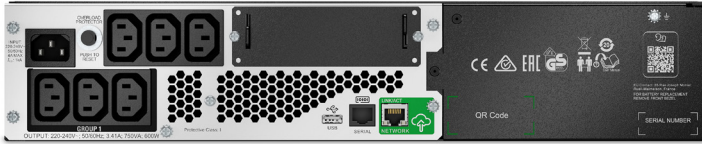
## Five-year warranty

Peace of mind with a five-year warranty on both electronics and internal batteries.

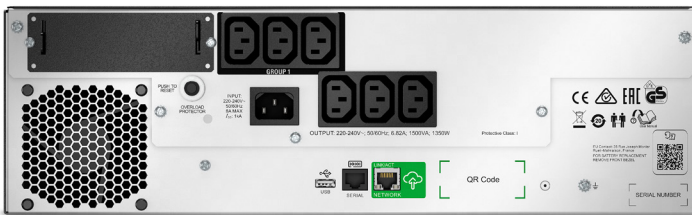


# Smart-UPS SMT Lithium-ion features

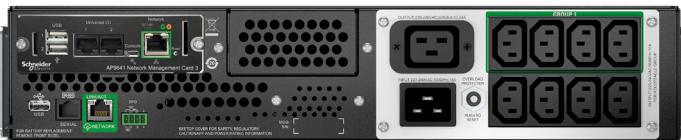
SMTL750RM12UC / SMTL1000RM12UC



SMTL1500RM13UC



SMTL2200RM12UCNC / SMTL3000RM12UCNC



## Switched outlet group

Control a group of output load receptacles independent from the main UPS:

- Cycling the entire UPS
- Sequenced turn ON/OFF
- Shedding of noncritical loads based on parameters (battery time, runtime remaining and overload)
- Scheduled time OFF to conserve energy
- Rebooting hung device without cycling the entire UPS

## Lithium-ion batteries

Operates at higher temperatures without degradation of the performance of the battery. Up to one-third lighter and 3x longer life than VRLA batteries.

## Flash upgradeable firmware

Allows for field updates of firmware via communication ports or Network Management Card (NMC).

## Communication ports

Options of Serial, USB, Ethernet and SmartSlot™ for network accessory cards.

## Communication protocols

Choose from Modbus serial, USB PowerSummary, HTTP, SNMP and Telnet.

## Input circuit breaker

Re-settable protection.

# Smart-UPS SC Lithium-ion features

Power protection for entry-level servers, voice and data networks

SCL500RMI1UC / SCL500RMI1UNC



SCL500RMI1UC



\*SCL500RMI1UNC



## Communication ports

Easy connection and initialization by Serial ports.

Use USB with Serial to USB adapter.

\*APC SmartConnect port for easy-to-use remote monitoring feature that provides automatic notifications, firmware updates and advanced support services. Ideal for small business monitoring.

## Site wiring fault

Fault wiring detection.

## \*Embedded network management card

Allows users to remote monitor and control the UPS via secure network browsers or external command line interfaces. Ideal for fleet management.

## Lithium-ion batteries

Provides long-life battery power, ability to operate at higher temperatures without degradation of battery performance. Up to one-third lighter than VRLA batteries.

## Rugged sheet metal

Construction rigidly holds and helps protect essential electrical components.

## Audible alarms

Provides notification of changing utility power and UPS power conditions.

## Input circuit breaker

Re-settable protection.

## Two-stage network grade power conditioning

Circuitry filters power aberrations.

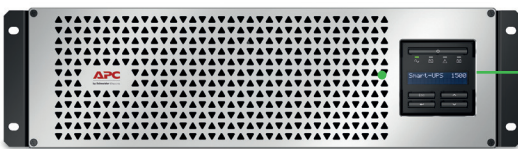
APC SmartConnect feature available on the "C" suffix model

\*Embedded Network Management Card option available on the "NC" suffix model



# APC Smart-UPS display

Intuitive, easy-to-use LCD interface



## LCD display screen

Clear, consistent and detailed information in your choice of basic or advanced menus.

## Power status

- Operating mode and efficiency mode
- Load VA/watts/amps
- Input/output voltage and frequency
- Battery capacity and runtime
- Energy meter

## Configuration

- Language
- Power quality settings
- Alarm, delay and threshold settings

## Test and diagnostics

Initiate battery and runtime calibration tests.

## Control

UPS and outlet group settings.

## Logs

See explanation of last 10 transfers and errors.

## LED indicators

Quickly identify online, on battery, error and replace battery status.

## Intuitive interface

Easy-to-use buttons to navigate and adjust settings.

## Load energy meter

Track energy usage in kilowatt hours.



# Smart-UPS management solutions



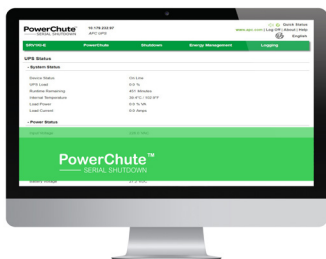
## EcoStruxure IT SmartConnect

### Out-of-box remote UPS power monitoring

Automatically included in connected Smart-UPS units, SmartConnect is an ingenious connectivity feature that makes Smart-UPS even more adaptable and easier to deploy: SmartConnect allows you to view the status of your UPS through a secure web portal. Through this innovative remote monitoring interface, you will receive automatic notifications, UPS firmware upgrades with one-click installation, and be able to run remote Self Tests. Feature availability varies with terms of use.

Advanced Plan on SmartConnect, with remote Outlet Group reboot, facilitates power cycling of connected IT equipment without going on-site.

<https://smartconnect.apc.com/welcome>



## PowerChute Serial Shutdown

### UPS manageability at your fingertips

UPS management, graceful shutdown, and energy management software for servers using dedicated serial or USB connections.

Energy usage, cost and CO2 reporting provide a greater understanding of the energy consumed by IT equipment, enabling improved energy efficiency. Learn more and download from <https://www.apc.com/pcss>.



## UPS network management cards

### For remote management and control

APC Network Management Cards enable secure remote monitoring and control of your power and cooling infrastructure that can be managed through the easy-to-use web browser interface, via EcoStruxure™ IT Software or another SNMP-enabled system of your choice.

For protected servers, the included PowerChute™ Network Shutdown software provides graceful, unattended shutdown in the event of an extended power outage, helping protect data integrity and reducing system downtime.



# Smart-UPS accessories

## UPS management accessories

- AP9640: UPS network management card
- AP9641: UPS network management card with environmental monitoring
- AP9643: UPS network management card with environmental monitoring and Modbus
- AP9834: APC USB Wi-Fi Device for wireless communication [Compatible with NMC AP9641/AP9643. Not compatible with SCL500 series model.]



AP9641



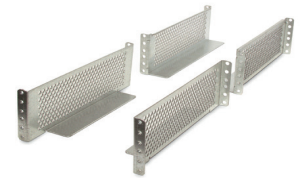
AP9834

## Rail Kit options

- SU032A: APC Smart-UPS four-post rackmount rail kit
- AP9625: APC Smart-UPS SMTL2200/3000 two-post rail kit [compatible with NetShelter 2 Post Rack AR201]



SU032A



AP9625

## Feet for UPS tower conversion

- SMTL2USF: APC Smart-UPS SMTL 1000/750VA Tower Mounting Stabilizing Kit
- SMTL3USF: APC Smart-UPS SMTL 1500VA Tower Mounting Stabilizing Kit



SMTL2USF

[2200/3000VA models not supported]

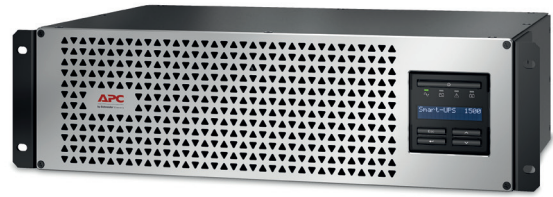
## Service bypass panels

- SBP1500RMI: APC service bypass PDU, 230V; 10amp with (6) IEC C13
- SBP3000RMI: APC service bypass PDU, 230V; 16amp with (6) IEC C13 and (1) C19



SBP1500RMI

# Product family



## SKU technical specifications

	SCL500RMI1UC SCL500RMI1UNC*	SMTL750RMI2UC	SMTL1000RMI2UC	SMTL1500RMI3UC
<b>Topology</b>	Line Interactive			
<b>Output</b>				
Output power capacity	400 Watts / 500 VA	600 Watts / 750 VA	800 Watts / 1000 VA	1350 Watts / 1500 VA
Nominal output voltage	230V			
Output voltage distortion	Less than 5% at full load			
Output frequency (sync to mains)	50/60Hz +/- 3Hz			
Waveform type	Pure sine wave			
Output connections	(4) IEC-320 C13	(6) IEC-320 C13		
Switched outlet group	Yes/2	Yes/1		
Efficiency at full load	>98%			
<b>Input</b>				
Nominal input voltage	230V			
Input frequency	50Hz/60Hz +/-3Hz (auto sensing)			
Input connections	IEC 320 C14			
Input voltage range for main operations	207 - 253Vac	160V - 286V		
<b>Batteries and runtime</b>				
Battery type	Lithium-ion			
Runtime (Half Load/ Full Load)	6 min/ 3 min	13 min/ 5.7 min	16.7 min / 8 min	13 min/ 5 min
<b>Communications and management</b>				
Interface port(s)	USB Type A, APC SmartConnect (RJ45)	Serial (RJ45), SmartSlot, USB Type A, APC SmartConnect (RJ45)		
Available SmartSlot™ interface quantity	0, *embedded Network Management Card in "NC" suffix model	Yes. (AP9641 is pre-installed in NC* models)		
Control panel	LED display	Multi-function LCD status and control console		
Audible alarms	Yes			
<b>Physical</b>				
Net HxWxD	44 x 432 x 232mm	86 x 438 x 318mm	86 x 438 x 318mm	130 x 438 x 302mm
Rack height	1U	2U	2U	3U
Net weight	4.2kg	15.4kg	16.3kg	19.5kg
Shipping weight	6.5kg	17.69kg	18.56kg	22.5kg
Shipping HxWxD	168 x 590 x 337mm	229 x 584 x 472mm	229 x 584 x 472mm	278 x 585 x 448mm
Color	Black [Silver front bezel]			
<b>Environmental</b>				
Operating environment	0-40°C (32 - 104°F)			
Operating relative humidity	0 - 95%			
Operating elevation	0 - 3000 meters (0 - 10000 feet)			
Storage temperature	-15 - 45°C (5 - 113°F) short term storage			
Storage relative humidity	0-95%, non-condensing			
Storage elevation	0 - 7620 meters (0-25000 feet)			
Audible noise at 1 meter from surface of unit	<45 dBA			
<b>Conformance</b>				
Regulatory approvals	IEC 62040-1, IEC62040-2, UKCA, CE, RCM, EAC, GS			
Standard warranty	5-Year UPS and batteries			

# Product family



## SKU technical specifications

	SMTL2200RM12UC SMTL2200RM12UCNC*	SMTL3000RM12UC SMTL3000RM12UCNC*
Topology	Line Interactive	
<b>Output</b>		
Output power capacity	1980 Watts / 2200VA	2700 Watts / 3000VA
Nominal output voltage	230V	
Output voltage distortion	Less than 5% at full load	
Output frequency (sync to mains)	50/60Hz +/- 3Hz	
Waveform type	Pure sine wave	
Output connections	(8) IEC 320 C13, (1) IEC 320 C19	
Switched outlet group	1	
Efficiency at full load	>98%	
<b>Input</b>		
Nominal input voltage	230V	
Input frequency	50Hz/60Hz +/-3Hz (auto sensing)	
Input connections	IEC 320 C20	
Input voltage range for main operations	160V - 286V	
<b>Batteries and runtime</b>		
Battery type	Lithium-ion	
Replacement battery	APCRBC174-LI	
Runtime (Half Load/ Full Load)	17 min / 7.5 min	12.5 min / 5.5 min
<b>Communications and management</b>		
Interface port(s)	Serial (RJ45), SmartSlot, USB Type A, APC SmartConnect (RJ45)	
Available SmartSlot™ interface quantity	Yes (AP9641 is pre-installed in NC* models)	
Control panel	Multi-function LCD status and control console	
<b>Physical</b>		
Net HxWxD	86.1 x 432 x 683 mm	
Rack height	2U	
Net weight	33.3kg	33.3kg
Shipping weight	60.85kg	60.85kg
Shipping HxWxD	458 x 600 x 980 mm	
Color	Black [Silver front bezel]	
<b>Environmental</b>		
Operating environment	0-40°C (32 - 104°F)	
Operating relative humidity	0-95%	
Operating elevation	0 - 3000 meters (0 - 10000 feet)	
Storage temperature	-15 - 45°C (5 - 113°F) short term storage	
Storage relative humidity	0-95%, non-condensing	
Storage elevation	0 - 7620 meters (0-25000 feet)	
Audible noise at 1 meter from surface of unit	<55 dBA	
<b>Conformance</b>		
Regulatory approvals	IEC62040-1, IEC62040-2, UKCA, CE, GS, RCM	
Standard warranty	5-Year UPS and batteries	

Information and product specifications contained in this document are subject to change without notice.

Runtimes listed are approximations based on ideal performance and environmental conditions, not guaranteed.

Life Is On



[apc.com/lithium-ion](https://apc.com/lithium-ion)

Schneider Electric  
35 rue Joseph Monier  
92500 Rueil-Malmaison, France  
Phone: + 33 (0)1 41 29 70 0  
[www.apc.com](https://www.apc.com)