



# Product Guide

For Topaz Bluetooth Signature Pads

Copyright © Topaz Systems Inc. All rights reserved.

For Topaz Systems, Inc. trademarks and patents, visit [www.topazsystems.com/legal](http://www.topazsystems.com/legal).

## Table of Contents

Pairing Instructions .....	3
Installation Instructions .....	6
Sign with the Topaz DemoOCX Test Utility .....	9
Bluetooth Charging Information .....	9
Bluetooth Battery Length.....	10
Bluetooth Recommended Usage/Charging Pattern.....	10

## Pairing Instructions

Below are the instructions to pair your Topaz Bluetooth signature pad.

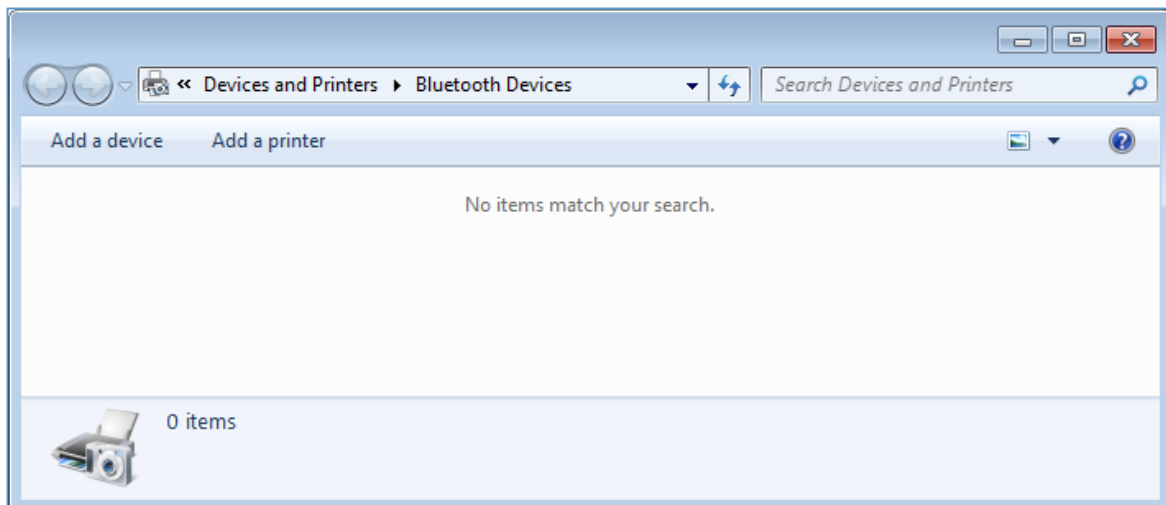
1. Be sure that you have Bluetooth support on your PC. If you do not, we recommend purchasing a Bluetooth USB adapter for your PC.

Follow the instructions provided with the Bluetooth USB adapter to set it up for use with your computer.

2. Once the adapter's software has been installed, turn on the signature pad using the switch above the pen stylus holder.
3. Open "My Bluetooth Places" on the PC. Do this by clicking on the "Bluetooth Devices" icon (similar to the icon below) in the system tray, found in the lower right corner of the Windows toolbar. Select "Show Bluetooth Devices" from the list.

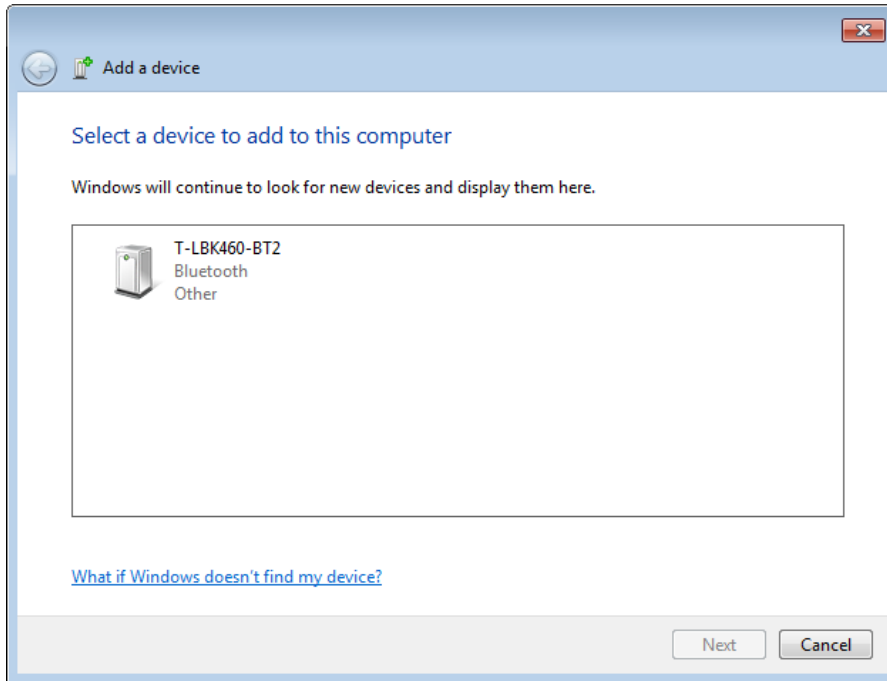


4. This will open the "Bluetooth Devices" menu, as seen below. Click the "Add a device" button to add your Bluetooth signature pad.

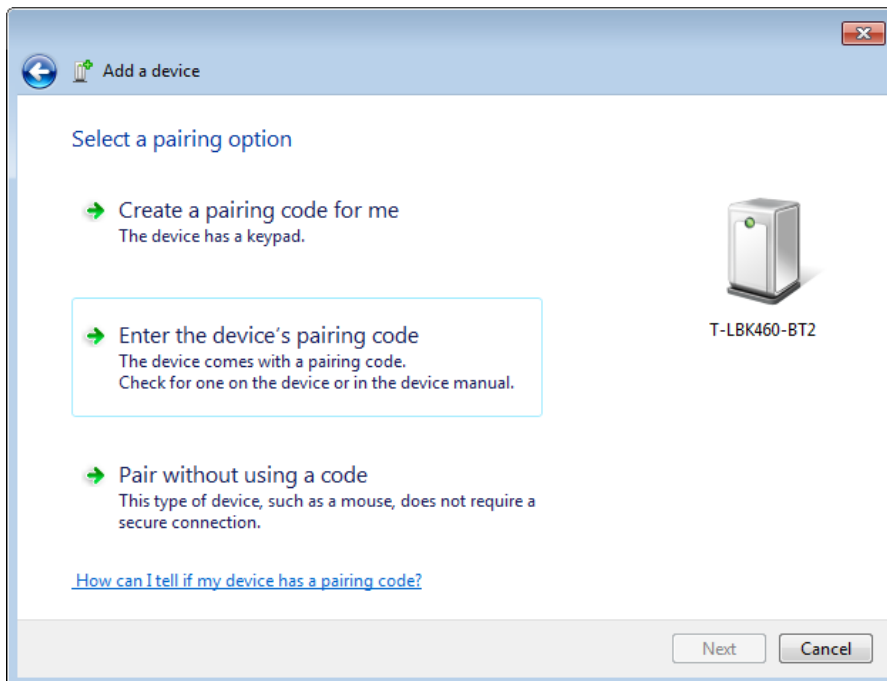


5. This will open the “Add a device” menu. Select your Topaz signature pad model from the list, and click “Next”.

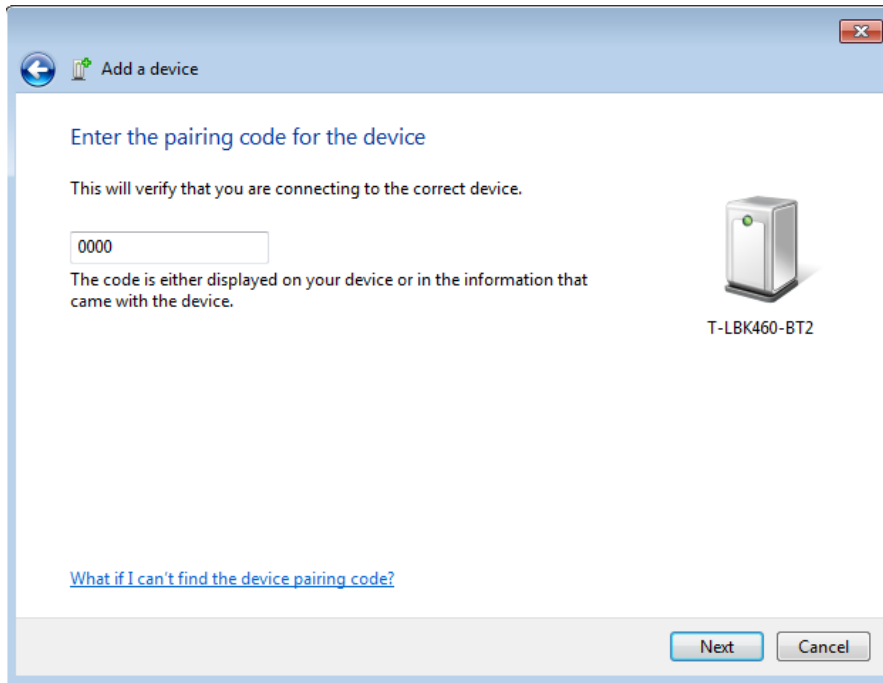
*Note: In our example, the Topaz signature pad model is “T-LBK460-BT2”.*



6. On the next screen, select the option that says “Enter the device’s pairing code”.

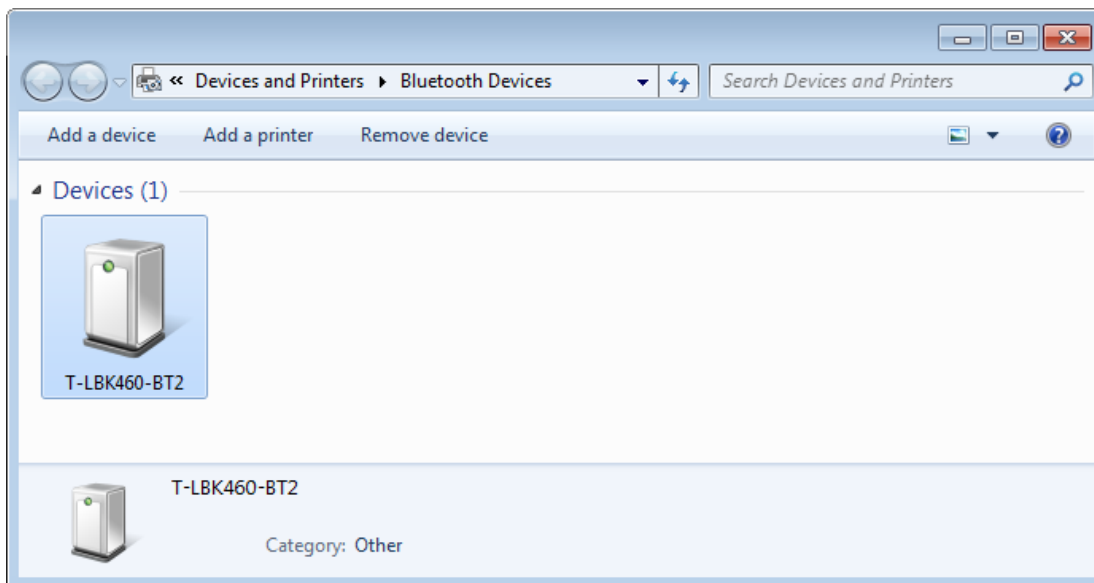


- On the next screen, enter “0000” as the Bluetooth pairing code, and click “Next”. The Topaz signature pad will be configured.

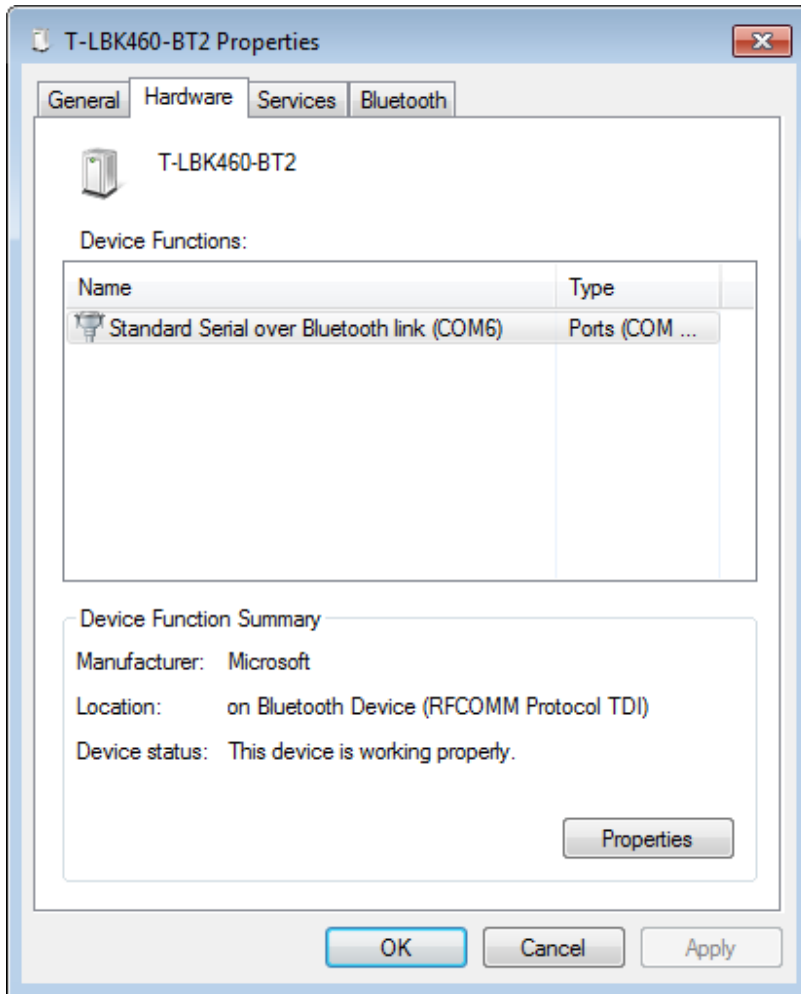


- Your Bluetooth signature pad is now paired. You can check to see which COM port it is using by clicking on the “Bluetooth Devices” icon in the system tray, found in the lower right corner of the Windows toolbar (same icon as in step 3 above).

Double click on the signature pad device (in our example, it is “T-LBK460-BT2”).



- This will open the signature pad “Properties” menu. Click on the “Hardware” tab, and the COM port will be listed under “Device Functions”. In our example, this is “COM6”.

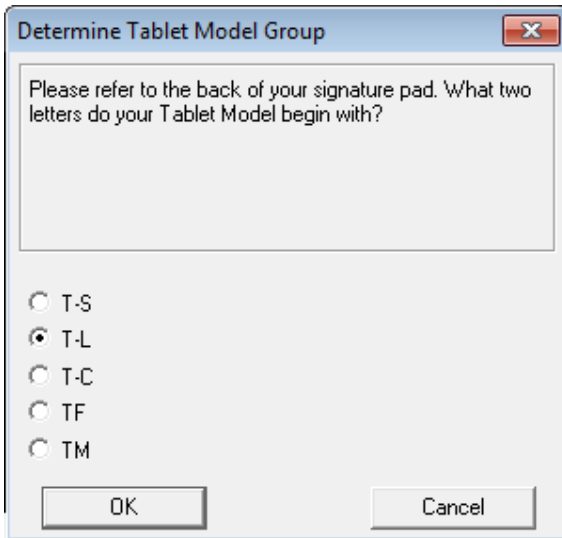


## Installation Instructions

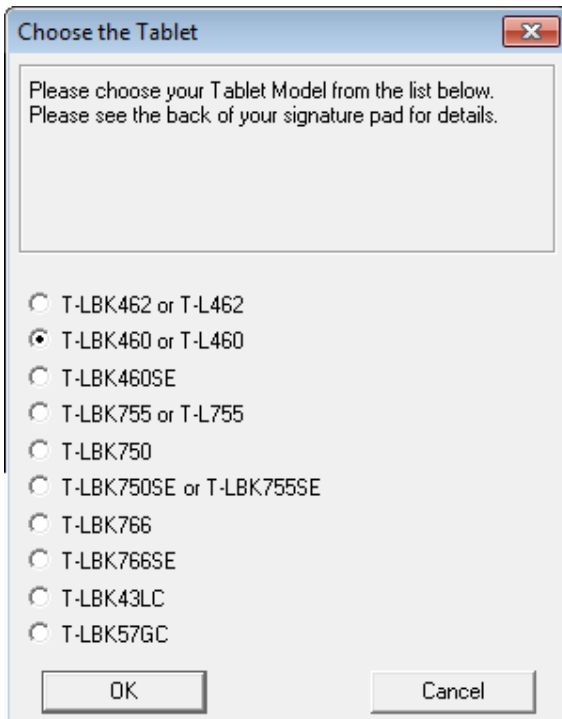
Below are software installation instructions for your Topaz Bluetooth signature pad.

- Download SigPlus from: [www.sigpluspro.com/sigplus-index.html](http://www.sigpluspro.com/sigplus-index.html).
- Read and click-through the “Welcome”, “Read Me File”, and “Destination Location” menus.

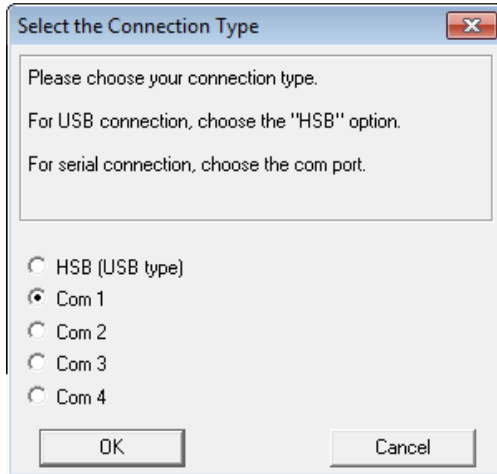
3. Select the prefix of your signature pad model number, found on the back of your pad. In our example, the pad model number is “T-LBK460-BT2-R”, so we select “T-L” from the installation list.



4. On the following menu, select the tablet model listed on the back of your pad. In our example, the pad model number is “T-LBK460-BT2-R”, so we select “T-LBK460 or T-L460” from the installation list.



5. On the following menu, select the “COM Port” that was assigned to your Bluetooth signature pad in Step 9 on Page 6 above.



NOTE: If your Bluetooth signature pad was assigned “COM Port 1-4” in Step 9 on Page 6, select the corresponding COM Port at this point, and continue with Step 6 below. If your Bluetooth signature pad was assigned anything greater than “COM Port 4” in Step 9 on Page 6, you will need to follow the following steps:

- a. Select Com 1 from the installation list seen in the graphic above, and finish the installation process.
- b. Download and install the Topaz SigPlus Adjust utility at: [www.topazsystems.com/sigplusadjust.html](http://www.topazsystems.com/sigplusadjust.html). During installation, select to install “SigPlus Adjust” to your desktop. If you choose not to do so, the “SigPlus Adjust” utility is available in the following location after installation: C:\Windows\SigPlus\SigPlusAdjust.
- c. Open the SigPlus Adjust application, and select your tablet name from the list. See the below table to match your model number to the corresponding tablet name. Once selected, click “Update”.

Model Number (back of pad)	Tablet Name (in SigPlus Adjust)
<b>T-S460-BT2-R</b>	SigLite1x5
<b>T-LBK460-BT2-R</b>	SigLiteLCD1x5
<b>T-LBK57GC-BTB1-R</b>	SigGemColor57
<b>T-LBK766SE-BTB1-R</b>	LCD4x5SE
<b>T-LBK766-BTB3-R</b>	SignatureGemLCD4x5
<b>T-LBK755SE-BTB1-R</b>	LCD4x3SE
<b>T-LBK755-BTB3-R</b>	SignatureGemLCE4x3
<b>T-LBK750SE-BTB1-R</b>	LCD4x3SE
<b>T-LBK750-BTB3-R</b>	SigLiteLCD4x3

- Continue with the SigPlus installation, and your Bluetooth signature pad is now ready for use.

## Sign with the Topaz DemoOCX Test Utility

Use the Topaz “DemoOCX” to test signature capture from the Topaz signature pad, included in the SigPlus download, found in the “Installation Instructions” section above.

*Note: During installation of SigPlus, be sure to select the correct Topaz signature pad model (listed on the back your signature pad) and the correct COM port, as noted in Step 9 on Page 6 above.*



For more information on using the Topaz “DemoOCX”, see the how-to PDF guide at: [www.topazsystems.com/software/download/demooctxhowto.pdf](http://www.topazsystems.com/software/download/demooctxhowto.pdf).

## Bluetooth Charging Information

When charging your Bluetooth pad, a red light will appear on top of the unit. When the pad is fully charged, the red light will turn off.

Charging from a 0% battery to a 100% battery takes approximately three and a half hours. The charger shuts off when the battery is full, so there is no risk of overcharging, and there is no harm in leaving the unit plugged in for extended periods after the charging completes.

## Bluetooth Battery Length

For the Topaz [T-LBK460-BT2-R](#) with LCD display, the battery will last for at least 8 hours of continuous use on a full charge. Turning off the pad in between uses will give an even longer use time.

The Topaz [T-S460-BT2-R](#) (non-LCD) lasts for 3 times as long (at least 24 hours of continuous use on a full charge). Turning off the pad in between uses will give an even longer use time.

For the Topaz Bluetooth Sled Products, see the following battery length times. These times are from a full charge to low battery indication, with the unit always ON and the wireless module connected. Turning off the pad in between uses will give an even longer use time.

<b>MODEL</b>	<b>BATTERY LENGTH</b>
T-LBK57GC-BTB1-R	Approximately 7 hours
T-LBK766SE-BTB1-R	Approximately 8 hours
T-LBK755SE-BTB1-R	Approximately 12 hours
T-LBK750SE-BTB1-R	Approximately 16 hours

## Bluetooth Recommended Usage/Charging Pattern

For optimum Bluetooth pad performance, use the pad during the day and charge overnight. Users should avoid frequent short charging cycles. For example, avoid charging the pad in between each customer signing.