


Dell Pro Premium Mouse – MS900


User's Guide


Regulatory model: MS900/UD2301



Notes, Cautions, and Warnings

 **NOTE:** A NOTE indicates important information that helps you make better use of your device.

 **CAUTION:** A CAUTION indicates potential damage to hardware or loss of data if instructions are not followed.

 **WARNING:** A WARNING indicates a potential for property damage, personal injury, or death.

© 2023-2024 Dell Inc. or its subsidiaries. All rights reserved. Dell Technologies, Dell, and other trademarks are trademarks of Dell Inc. or its subsidiaries. Other trademarks may be trademarks of their respective owners.

2024-11

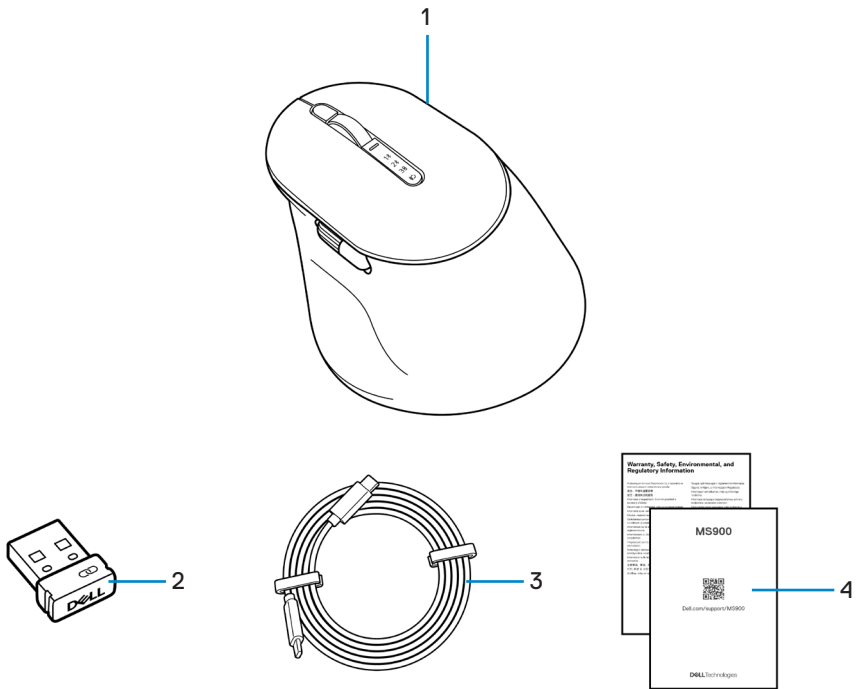
Rev. A02

Contents

What's in the box	5
Features	6
Dell Display and Peripheral Manager	7
Setting up your wireless mouse	8
Charging the battery	8
Battery indicator colors	9
Turning on the wireless mouse.	9
Pairing your wireless mouse.	10
Download and install the Bluetooth Driver	10
Download and installation	10
User interface	11
Pairing your wireless mouse using Swift Pair	12
Pairing your wireless mouse using Bluetooth	13
Pairing device two using Bluetooth	15
Pairing with a Dell Secure Link USB receiver	16
Switching between paired devices.	18
Changing the scroll-speed	19
Troubleshooting	20
Specifications.	25
General	25
Electrical	25
Physical characteristics	26
Environmental	26

Wireless	26
Charging power requirement.	26
Statutory Information	30
Warranty	30
Limited warranty and return policies	30
For U.S. customers	30
For European, Middle Eastern and African customers	30
For non-U.S. customers.	30

What's in the box



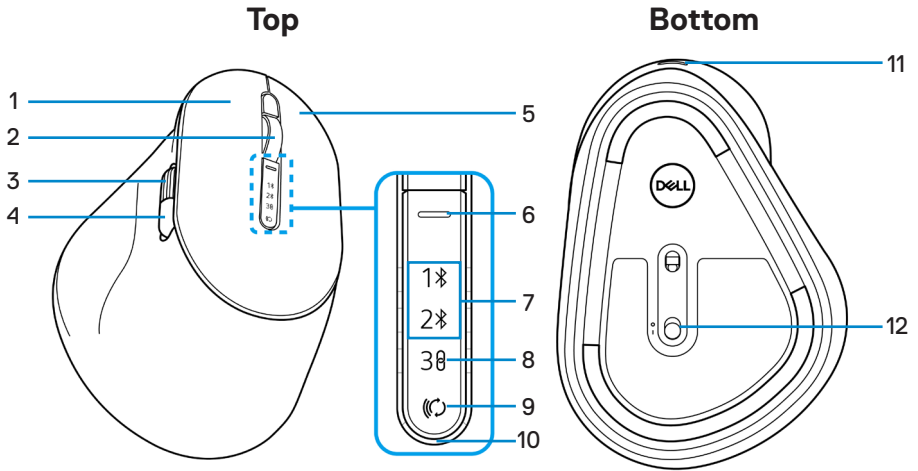
1. Mouse

3. USB-C to USB-C charging cable

2. Dell Secure Link USB receiver

4. Documents

Features

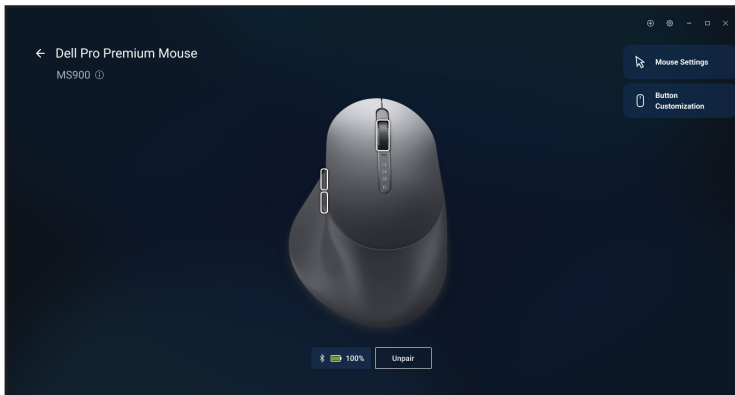


- 1. Left button
- 2. Vertical-scroll wheel
- 3. Horizontal-scroll wheel (Default: Forward, programmable with Dell Display and Peripheral Manager)
- 4. Side button (Default: Back, programmable with Dell Display and Peripheral Manager)
- 5. Right button
- 6. Scroll-speed toggle button
- 7. Bluetooth modes
- 8. RF 2.4 GHz mode (USB receiver)
- 9. Connection-mode button
- 10. Low battery LED indicator
- 11. USB-C port
- 12. Power switch

Dell Display and Peripheral Manager

The Dell Display and Peripheral Manager is an app that helps you set up and configure your Dell monitors and peripherals. With this app you can:

- View device information such as firmware version and battery status for wireless devices.
- Configure DPI setting and set primary mouse button.
- Upgrade to the latest firmware for your device.
- Pair or unpair to the RF dongle.



Installing Dell Display and Peripheral Manager

When you connect the device to your computer for the first time, you may be prompted to download and install the app.


NOTE: If the download prompt does not appear within a few minutes, you can manually install the software from the **Drivers & Downloads** tab at www.dell.com/support/MS900.


For more information, see Dell Display and Peripheral Manager User's Guide in the **Documentation** tab.

Setting up your wireless mouse

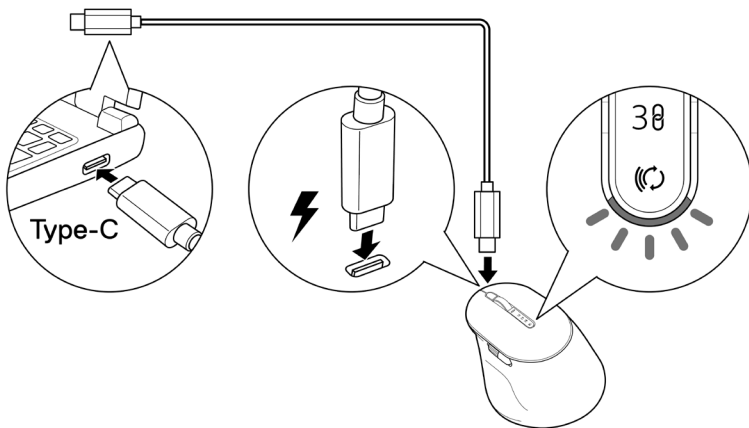
Charging the battery

European Union (EU) has a common charger requirement for wireless products that have embedded rechargeable battery. For more information about the EU charging power requirements, see the [Charging power requirement](#).


 **NOTE:** Your wireless mouse has a rechargeable battery. For best results, ensure that the battery is fully charged before using it for the first time.


 **NOTE:** To improve battery life, turn off the power switch when the wireless mouse is not in use.

Connect one end of the USB-C charging cable to the USB-C port on the mouse and the other end to an available USB-C port on your computer, desktop, or compatible mobile device.



The white low battery LED indicator will breathe until the battery is fully charged or the USB charging cable is unplugged.

 **NOTE:** During charging, the low battery LED indicator will turn on even if the mouse is turned off.

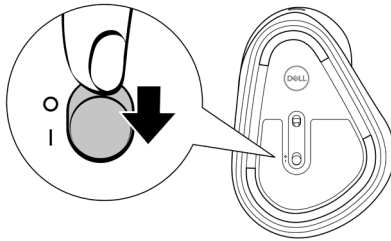
 **NOTE:** The USB-C charging cable can be used only for charging the mouse. It does not support data transfer.


Battery indicator colors

- **Low power ($\leq 5\%$):** Amber pulsing for a period of 5 seconds regardless of the connection status.
- **Normal power ($> 5\%$):** Battery indicator will remain off when mouse is turned on.
- **Charging:** Breathing in white.
- **Fully charged:** Static white for 10 seconds and then dims off.

Turning on the wireless mouse

Push the power switch down to turn on the wireless mouse.



 **NOTE:** Ensure that the distance between your computer and the wireless mouse is within ten meters.

Pairing your wireless mouse

Your Dell wireless mouse can be paired with devices using either the Dell Secure Link USB receiver or Bluetooth. You can pair and switch between a laptop, desktop, or any compatible mobile device.

Download and install the Bluetooth Driver


Bluetooth Drivers come pre-installed on all Dell computers.

To manually download and install wireless Bluetooth Driver, see **Download and install wireless Bluetooth Driver**.

Pairing your wireless mouse using Dell Pair

Dell Pair supports the following:

- Detect Dell peripheral devices like mouse and keyboard when they are within the detection range
- Seamlessly pair devices through Bluetooth

 **NOTE:** Dell Pair user's guide is common to all supported Dell peripherals. For features specific to the device, see the Dell Pro Premium Collaboration Keyboard – KB900 user's guide.

Download and installation

Dell Pair comes pre-installed on selected Dell computers. For more information about the list of Dell Pair compatible devices, see www.dell.com/support/kbdoc/000201693.

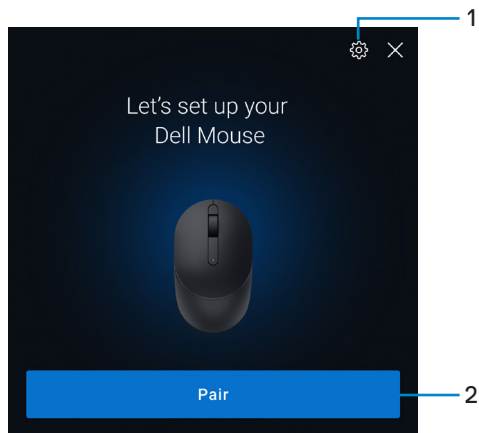
To manually download and install, go to Dell support website:

1. Open Dell support home page:
www.dell.com/support/dellpair.
2. In the **Drivers & Downloads** section, download the Dell Pair executable file.
3. Follow the on-screen instructions to complete the installation.

After the installation is complete, “Dell Pair” is available on Windows start menu.

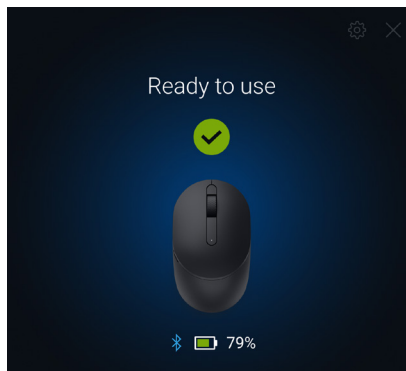
User interface

1. Place your wireless mouse near your computer. Then press the connection-mode button to switch to the first pairing mode (1⌘).
2. Press the connection-mode button for three seconds. Ensure that the first Bluetooth channel LED (1⌘) blinks white, indicating the Bluetooth pairing is initiated.
3. Dell Pair pops up a notification when a device supporting detection by Dell Pair, is turned on and brought close to the Bluetooth detection range of the computer for the first time. Click **Pair** to proceed with seamless pairing of the device using Bluetooth.



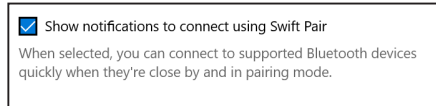
1. Dell Pair settings
2. Pair button to start pairing using Bluetooth

4. After successful pairing, the wireless mouse is ready to be used.

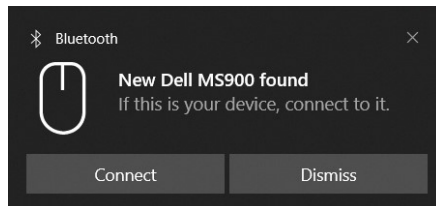


Pairing your wireless mouse using Swift Pair

1. In Windows Search, type Bluetooth.
2. Click **Bluetooth and other devices settings**. The **Settings** window appears.
3. Ensure that the **Show notifications to connect using Swift Pair** check box is selected.





4. Ensure that the Bluetooth is turned on.
5. Place your wireless mouse near your computer. Then press the connection-mode button to switch to the first pairing mode (1⌘).
6. Press the connection-mode button for three seconds. Ensure that the first Bluetooth channel LED (1⌘) blinks white, indicating the Bluetooth pairing is initiated.
7. The **New Dell MS900 found** window appears. Click **Connect** and confirm the pairing process on both wireless mouse and your computer.




Pairing your wireless mouse using Bluetooth

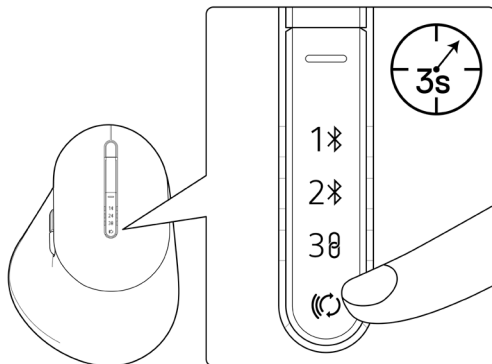
Your Dell wireless mouse can be paired with your Bluetooth enabled computer. You can pair and switch between a laptop, desktop, and a compatible mobile device.

 **NOTE:** You can connect up to two devices with your wireless mouse using Bluetooth.


 **NOTE:** Before pairing your wireless mouse using Bluetooth, ensure that you unpair the inactive devices on your computer, and update the Bluetooth Driver on your Dell computer to the latest version. For more information, see Drivers & Downloads at Dell.com/support.

 **NOTE:** Ensure that the distance between your computer and mouse is within the Bluetooth reception range.

1. Press the connection-mode button to switch to the first Bluetooth pairing mode (1⌘).
2. Press the connection-mode button for 3 seconds. Ensure that the first Bluetooth channel LED (1⌘) blinks white, indicating the Bluetooth pairing is initiated.

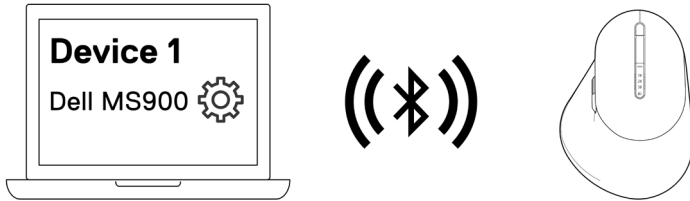



3. Pair your wireless mouse with your Bluetooth-enabled computer.
 - 1) Select **Start > Settings > Bluetooth & other devices > Add Bluetooth or other device > Bluetooth**.
 - 2) Select **Dell MS900** and then **Done**.

 **NOTE:** If Dell MS900 is not listed in your computer, check and ensure that the pairing mode is enabled on the mouse.





4. Confirm the pairing process on both wireless mouse and your computer.

The first Bluetooth channel LED (1) turns solid white for a few seconds to confirm the pairing, and then the light turns off. After your mouse and computer pairing is completed, the mouse connects to the computer automatically when the Bluetooth is enabled and both devices are within the Bluetooth range.

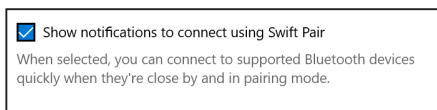


 **NOTE:** The above image indicates the first Bluetooth enabled device pairing.

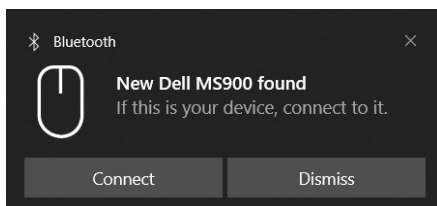
Pairing device two using Bluetooth

-  **NOTE:** You can connect up to two devices with your mouse using Bluetooth.
-  **NOTE:** Before pairing your wireless mouse using Bluetooth, ensure that you unpair the inactive devices on your computer, and update the Bluetooth Driver on your Dell computer to the latest version. For more information, see Drivers & Downloads at Dell.com/support.
-  **NOTE:** Ensure that the distance between your computer and mouse is within the Bluetooth reception range.
-  **NOTE:** For Bluetooth pairing you can use Dell Pair, Swift Pair, or manual pair option.


1. In Windows Search, type Bluetooth.
2. Click **Bluetooth and other devices settings**. The **Settings** window appears.
3. Ensure that the **Show notifications to connect using Swift Pair** check box is selected.



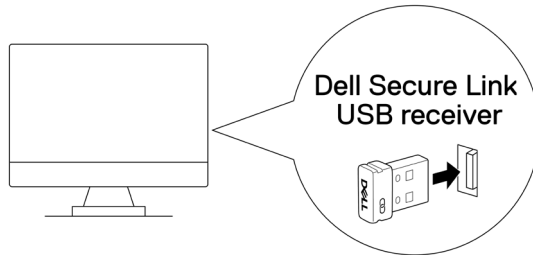
4. Ensure that the Bluetooth is turned on.
5. Place your wireless mouse near your computer. Then press the connection-mode button to switch to the second pairing mode (2 \times).
6. Press the connection-mode button for three seconds. Ensure that the second Bluetooth channel LED (2 \times) blinks white, indicating the Bluetooth pairing is initiated.
7. The **New Dell MS900 found** window appears. Click **Connect** and confirm the pairing process on both wireless mouse and your computer.



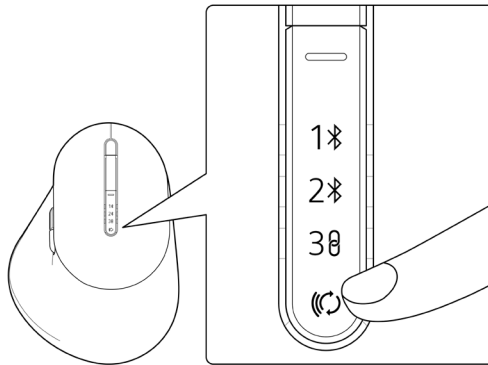
Pairing with a Dell Secure Link USB receiver

 **NOTE:** You can connect a device to your wireless mouse using the Dell Secure Link USB receiver.

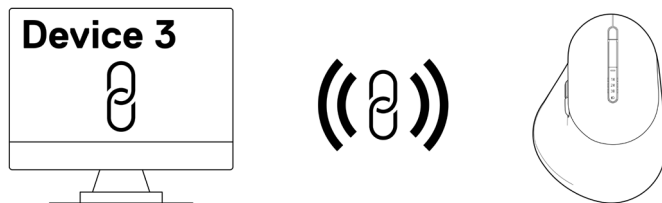
1. Connect the Dell Secure Link USB receiver to the USB port on your computer.



2. Toggle the connection-mode button on your mouse until the USB connection is selected (30).



The mouse is now connected with your USB device.



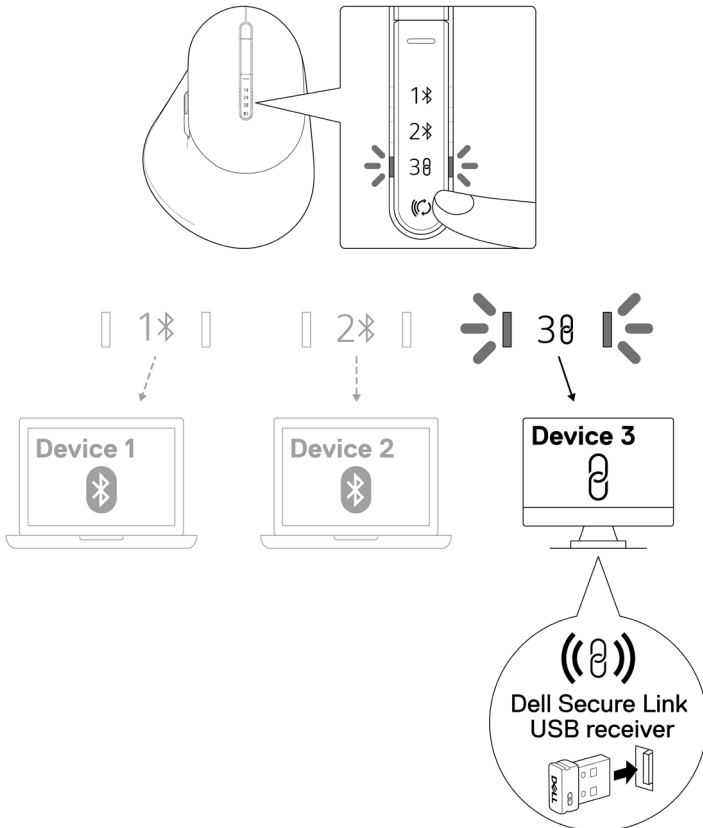
 **NOTE:** The above image indicates the RF enabled device pairing.

Switching between paired devices

Your wireless mouse memorizes the last connection mode. Every time you turn on the mouse, the last connection-mode light along with the low battery LED indicator will turn on for 3 seconds.

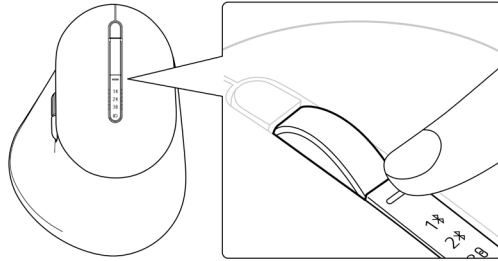
If you want to connect to another paired device, toggle the connection-mode button until the respective connection-mode light turns on.

For example, if you want to connect to the wireless mouse using the Dell Secure Link USB receiver then press the connection-mode button until the connection-mode light (30) is selected.

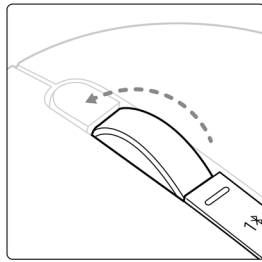


Changing the scroll-speed

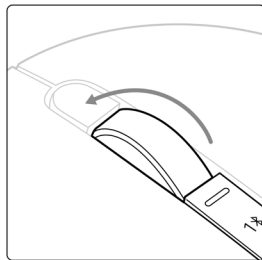
Your Dell wireless mouse's vertical-scroll wheel can be shifted between two scrolling modes, such as notched and fast. To toggle between these modes, press the scroll-speed toggle button.



- Notched speed mode is suitable for scrolling precise items.



- Fast speed mode is best for scrolling through long web pages and files.



Troubleshooting

Problems	Possible solutions
Mouse is not functioning	<ol style="list-style-type: none">1. Ensure that the battery is fully charged.2. Turn off the mouse, and then turn it on.
Mouse buttons do not work	<ol style="list-style-type: none">1. Ensure that the battery is fully charged.2. Turn off the mouse, and then turn it on.3. On your computer, turn the Bluetooth off and on.4. Restart your computer.5. Check for interference that may affect Bluetooth connectivity. For example, nearby Wi-fi or USB 3.0 devices.<ul style="list-style-type: none">• Check for any wireless devices that are in close proximity such as wireless networking devices. For example, Bluetooth printer, USB 3.0 devices, and so on.• Move away from these devices.
Bluetooth pairing button does not work	<ol style="list-style-type: none">1. Ensure that the battery is fully charged.2. Turn off the mouse, and then turn it on.3. Ensure that the Bluetooth device is in pairing mode by pressing the Bluetooth pairing button for three seconds. The Bluetooth channel LED blinks white to indicate the Bluetooth pairing is initiated.

Problems

Possible solutions

Unable to pair the mouse with the computer

1. Ensure that the battery is fully charged.
2. Turn off the mouse, and then turn it on.
3. On your computer, turn the Bluetooth off and on.
4. Restart your computer.
5. Check if you have the latest Bluetooth Driver installed on your computer.
Go to **www.dell.com/support** and update the correct Bluetooth Driver. For more information, see **Download and install the Bluetooth Driver**.
6. Check for interference that may affect Bluetooth connectivity. For example, nearby Wi-fi or USB 3.0 devices.
 - Check for any wireless devices that are in close proximity such as wireless networking devices. For example, Bluetooth printer, USB 3.0 devices, and so on.
 - Move away from these devices.
7. Ensure that the Bluetooth device is in pairing mode by pressing the connection-mode button for three seconds. The Bluetooth channel LED blinks white to indicate the Bluetooth pairing is initiated.
8. Check if your computer is included in the list of selected Dell computers compatible with the mouse. For more information, see **Dell.com/support**.

Wireless connection is lost

1. Ensure that the battery is fully charged.
 2. Turn off the mouse, and then turn it on.
 3. On your computer, turn the Bluetooth off and on.
 4. Restart your computer.
 5. Check if you have the latest Bluetooth Driver installed on your computer.
Go to **www.dell.com/support** and update the correct Bluetooth Driver. For more information, see **Download and install the Bluetooth Driver**.
-

Problems

Possible solutions

Wireless connection is lost

6. Check for interference that may affect Bluetooth or RF connectivity. For example, nearby Wi-fi or USB 3.0 devices.
 - Check for any wireless devices that are in close proximity such as wireless networking devices. For example, Bluetooth printer, USB 3.0 devices, and so on.
 - Move away from these devices.
 - Ensure that the distance between your laptop, desktop, or a compatible mobile device where the Dell Secure Link USB receiver is connected is within 1m.
 - Ensure that the USB-A port where the Dell Secure Link USB receiver is connected is not close to the USB-A port(s) where other devices are connected.
 - If necessary, connect the Dell Secure Link USB receiver to the dongle extender and check the wireless connection again.

Mouse movement and button clicks are lagging and erratic

- Check for interference that may affect Bluetooth or RF connectivity. For example, nearby Wi-fi or USB 3.0 devices.
- Check for any wireless devices that are in close proximity such as wireless networking devices. For example, Bluetooth printer, USB 3.0 devices, and so on.
 - Move away from these devices.
 - Ensure that the distance between your laptop, desktop, or a compatible mobile device where the Dell Secure Link USB receiver is connected is within 1m.
 - Ensure that the USB-A port where the Dell Secure Link USB receiver is connected is not close to the USB-A port(s) where other devices are connected.
 - If necessary, connect the Dell Secure Link USB receiver to the dongle extender and check the wireless connection again.
-

Problems

Possible solutions

Dell Pair notification does not open when a Bluetooth device is turned on for the first time

1. Windows 10 (version 19041) is the oldest version to support Dell Pair.
2. Bluetooth version 5.0 or higher is required.
3. Bluetooth is supported on the computer. It is turned ON under Windows settings.
4. The Bluetooth device supports detection by Dell Pair.
5. The Bluetooth device is placed close to the detection range of the computer. Lift the mouse and bring this closer to your computer.
6. Check the computer and the Bluetooth device both have sufficient battery charge to operate.
7. The Bluetooth device has the latest firmware.
8. The Bluetooth controller on the computer is from Intel.
9. Power cycle the Bluetooth device.
10. Ensure that the Bluetooth device is in pairing mode by pressing the connection-mode button for three seconds. The Bluetooth channel LED blinks white to indicate the Bluetooth pairing is initiated.

Dell Pair reports a pairing error

Proceed to reconnect through Dell Pair using the following steps:

1. Download and install the latest Bluetooth Drivers on your computer. For more information, see **Download and install the Bluetooth Driver**.
 1. If Bluetooth device is brought near computer and is in pairing mode, the dell pair UI aids pairing.
 2. Wait for pairing error User Interface (UI) to autodismiss.
 3. Move the Bluetooth device far away from the computer.
 4. Bring the Bluetooth device back near the computer.
 5. Ensure that the Bluetooth device is in pairing mode by pressing the connection-mode button for three seconds. The Bluetooth channel LED blinks white to indicate the Bluetooth pairing is initiated.
-

Problems

Possible solutions

Unable to pair using Dell Pair and Swift Pair

1. Press the connection-mode button to switch to the first or second Bluetooth pairing mode.
2. Press the connection-mode button for three seconds until the selected Bluetooth channel LED starts blinking white.
3. Open **Start > Settings > Bluetooth & other devices > Add Bluetooth or other device**.
4. Select **Add device > Bluetooth**.
5. Select **Dell MS900** and add it.
6. If adding the wireless mouse is not successful, restart the system and repeat the steps.

Dell Secure Link USB receiver not working

1. Disconnect and reconnect the Dell Secure Link USB receiver or connect it to another USB-A port.
2. Ensure that the third connection mode is selected (38).
3. If the Dell Secure Link USB receiver is still not working, restart the system or check the MS900 - Dell Display and Peripheral Manager for errors.

Dell Display and Peripheral Manager software features not working as intended.

The features supported by Dell Display and Peripheral Manager are dependent on the operating system and the processor of your computer.


See documentation for Dell Display and Peripheral Manager at [Dell Support Site](#) for more information.

Specifications

General

Model number	MS900
Connection type	<ul style="list-style-type: none">• Wireless (2.4 GHz RF with Dell Secure Link Receiver)• Bluetooth 5.1 LE (supports Dell Pair and Microsoft Swift Pair)
System requirement	<ul style="list-style-type: none">• Windows Server 2012; 2012 R2, 2016 (RF receiver only)• Windows 8, 32/64-bit• Windows 10, 32/64-bit• Windows 11• Android 11• Chrome 107• Mac OS 13• Linux 6.x, Ubuntu 18 and Redhat 8 Enterprise• Free-DOS (RF receiver only)

Electrical

Operating voltage	5 V
Battery type	Polymer Li-ion Rechargeable Battery 500 mAh
Battery life	<ul style="list-style-type: none">• Active mode by 0.72 hour, reset mode 1 by 0.48 hour, reset mode 2 by 1.2 hours, and sleep mode by 21.6 hours per day.• 5 days per week• 1min charge for half day usage model• 80% battery capacity for 1 hour charging <p> NOTE: Charging time varies based on the connected port and its rating.</p>

Physical characteristics

Weight (without dongle)	140±3 g (0.308 lb)
Dimensions:	
Length	126.94 ±0.5 mm (4.99 in.)
Width	89.70 ±0.5 mm (3.53 in.)
Height	45.45 ±0.3 mm (1.78 in.)


Environmental

Temperature:	
Operating	0°C to 40°C (32°F to 104°F)
Storage	-40°C to 65°C (-40°F to 149°F)
Storage humidity	20% to 90% relative humidity; non-condensing

Wireless

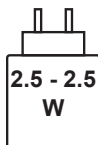
RF resolution	2.4 GHz RF
Operation distance	Up to 10-meter

Charging power requirement

 **NOTE:** The information in this section is applicable only to the European Union (EU) countries.

Charging power requirement:

The power delivered by the charger must be between minimum 2.5W required by the radio equipment, and maximum 2.5W in order to achieve the maximum charging speed.



Изискване за мощност на зареждане:

Мощността, осигурявана от зарядното устройство, трябва да е между минимум 2.5W, изисквана от радиооборудването, и максимум 2.5W, за да се постигне максимална скорост на зареждане.

Požadavek na nabíjecí výkon:

Aby bylo dosaženo maximální rychlosti nabíjení, musí být výkon dodávaný nabíječkou mezi minimem 2.5W požadovaným rádiovým zařízením a maximem 2.5W.

Strømkrav til opladning:

Den effekt, der leveres af opladeren, skal være mellem de minimale 2.5W, der kræves af radioudstyret, og maksimaleffekten på 2.5W for at opnå den maksimale opladningshastighed.

Charging power requirement:

The power delivered by the charger must be between minimum 2.5W required by the radio equipment, and maximum 2.5W in order to achieve the maximum charging speed.

Laadimisvõimsuse nõue:

Maksimaalse laadimiskiiruse saavutamiseks peab laadija tarnitav võimsus jääma radioseadmete nõutava minimaalse võimsuse 2.5W ja maksimaalse võimsuse 2.5W vahele.

Lataustehovaatimus:

Laturin tuottaman tehon on oltava radiolaitteen vaatiman minimin 2.5W ja maksimin 2.5W välillä maksimilatausnopeuden saavuttamiseksi.

Puissance requise pour le chargement:

L'alimentation fournie par le chargeur doit être comprise entre la puissance minimale requise par l'équipement radio (2.5W) et la puissance maximale autorisée (2.5W) afin d'atteindre la vitesse maximale de chargement.

Ladeanforderungen:

Die vom Ladegerät bereitgestellte Leistung muss zwischen mindestens 2.5W für die Funkgeräte und maximal 2.5W liegen, um die maximale Ladegeschwindigkeit zu erreichen.

Απαιτήση ισχύος φόρτισης:

Η ισχύς που παρέχει ο φορτιστής πρέπει να κυμαίνεται μεταξύ των ελάχιστων 2.5W που απαιτούνται από τον ραδιοεξοπλισμού και των μέγιστων 2.5W, προκειμένου να επιτευχθεί η μέγιστη ταχύτητα φόρτισης.

Töltési teljesítményigény:

A maximális töltési sebesség eléréséhez a töltő által leadott teljesítménynek a rádióberendezés által megkövetelt minimális 2.5W és a maximális 2.5W között kell lennie.

Requisiti di alimentazione per la ricarica:

L'alimentazione fornita dal caricabatterie deve essere compresa tra i 2.5W minimi richiesti dall'apparecchiatura radio e i 2.5W massimi, al fine di raggiungere la velocità di ricarica massima.

Uzlādes jaudas prasība:

Lādētāja nodrošinātajai jaudai jābūt no min. 2.5W, kas nepieciešama radio aprīkojumam, un maks. 2.5W, lai sasniegtu maksimālo uzlādes ātrumu.

Įkrovimo galios reikalavimai:

Kad būtų pasiektas didžiausias įkrovimo greitis, įkroviklio galia pagal radijo įrangos reikalavimus turi būti ne mažesnė kaip 2.5W ir ne didesnė kaip 2.5W.

Rekwizit dwar il-potenza tal-iċċarġjar:

Il-potenza pprovduta miċ-ċarġer trid tkun bejn il-minimu ta' 2.5W meħtieġ mit-tagħmir tar-radju tiegħek, u l-massimu ta' 2.5W biex tinkiseb il-veloċità massima tal-iċċarġjar.

Vereiste oplaadstroom:

De stroom die door de oplader wordt geleverd, moet tussen minimaal 2.5W, vereist door de radioapparatuur, en maximaal 2.5W zijn om de maximale oplaadsnelheid te bereiken.

Wymaganie dotyczące zasilania:

Zasilanie dostarczane przez ładowarkę musi znajdować się w zakresie od wartości minimalnej 2.5W wymaganej przez urządzenie radiowe po wartość maksymalną 2.5W zapewniającą ładowanie z maksymalną szybkością.

Requisito de potência de carregamento:

A potência fornecida pelo carregador deve situar-se entre o mínimo de 2.5W exigido pelo equipamento de rádio e o máximo de 2.5W, a fim de atingir a velocidade máxima de carregamento.

Cerință de alimentare pentru încărcare:

Alimentarea furnizată de încărcător trebuie să fie între minimum 2.5W, valoare impusă de echipamentul radio, și maximum 2.5W pentru a obține viteza maximă de încărcare.

Požiadavky na napájanie:

Na dosiahnutie maximálnej rýchlosti nabíjania musí byť výkon dodávaný nabíjačkou medzi minimom 2.5W požadovaným rádiovým zariadením a maximom 2.5W.

Zahteve glede moči napajanja:

Za najhitrejše polnjenje mora napajalnik dovajati moč med najmanj 2.5W (kar zahteva radijska oprema) in največ 2.5W.

Requisito de carga:

La potencia suministrada a través del cargador debe de ser de entre 2.5W y 2.5W para obtener la velocidad de carga máxima en equipos de radio.

Strömförsörjningskrav för laddning:

Den ström som levereras av laddaren måste vara mellan minst 2.5W och högst 2.5W enligt radioutrustningens krav för att uppnå maximal laddningshastighet.

Требования к мощности для зарядки:

Зарядное устройство должно подавать мощность в диапазоне от 2.5Вт, согласно минимальному требованию для радиооборудования, до 2.5Вт для достижения максимальной скорости зарядки.

Statutory Information

Warranty

Limited warranty and return policies

Dell-branded products carry a three-year limited hardware warranty. If purchased together with Dell system, it will follow the system warranty.

For U.S. customers

This purchase and your use of this product are subject to Dell's end user agreement, which you can find at [Dell.com/terms](https://www.dell.com/terms). This document contains a binding arbitration clause.

For European, Middle Eastern and African customers

Dell-branded products that are sold and used are subject to applicable national consumer legal rights, the terms of any retailer sale agreement that you have entered into (which will apply between you and the retailer) and Dell's end user contract terms.

Dell may also provide an additional hardware warranty – full details of the Dell end user contract and warranty terms can be found by going to [Dell.com/terms](https://www.dell.com/terms), selecting your country from the list at the bottom of the “home” page and then clicking the “terms and conditions” link for the end user terms or the “support” link for the warranty terms.

For non-U.S. customers

Dell-branded products that are sold and used are subject to applicable national consumer legal rights, the terms of any retailer sale agreement that you have entered into (which will apply between you and the retailer) and Dell's warranty terms. Dell may also provide an additional hardware warranty – full details of Dell's warranty terms can be found by going to [Dell.com](https://www.dell.com), selecting your country from the list at the bottom of the “home” page and then clicking the “terms and conditions” link or the “support” link for the warranty terms.