

HP ZBook Fury 16 inch G11 Mobile Workstation PC

So powerful you'll forget it's a laptop

Tackle your most intense workflows with the ZBook Fury—offering a desktop class CPU in a laptop. With integrated or discrete graphics, a stunning display and collaboration features you can edit 8K videos, render in 3D or train machine learning models. Experience extreme pro performance—all on the move.

Tackle multiple heavy workflows—simultaneously

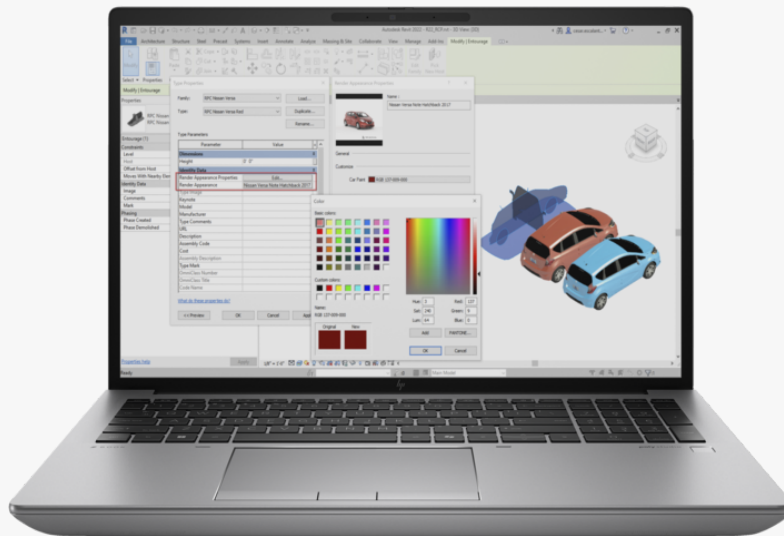
Get unthrottled¹ performance with a desktop class Intel® CPU² and up to an NVIDIA RTX™ 5000 Ada Laptop GPU.³ With thermal technology designed to keep your PC cool you can simultaneously tackle model training and deep learning or 3D animation and VFX.

Upgrade. Expand. Evolve

Get desktop-level storage and memory with slots for up to 128GB of RAM,⁴ and capacity for 16TB of storage.⁵ Expansion is simple with tool-free access to removable components, and an extensive port selection to connect to critical accessories.

Immerse in your work

Get complete color accuracy and 120Hz refresh rate OLED¹⁵ with an HP DreamColor display³ or choose an OLED display for absolute blacks and extreme whites.³ Customize your keyboard lighting and highlight shortcuts with RGB per-key LED backlighting.⁷



*Product image may differ from actual product

Sustainability in action

Help protect our shared future with PCs that drive towards increasing sustainability

At HP, we care about the impact our products have on our people, communities, and the planet. That's why this device is EPEAT® Gold registered¹³ and the outer box packaging is 100% sustainably sourced¹⁴.



HP ZBook Fury 16 inch G11 Mobile Workstation PC

Featuring

Windows 11

Work without compromising on performance with Windows 11¹ combined with HP's collaboration and security technology.

Intel® Core™ Processor

Crank up your multi-tasking and productivity with up to Intel vPro® with Next Gen Intel® Core™ i9 processor, designed to handle complex, multithreaded apps.^{2,3}

NVIDIA® Graphics

Tackle your biggest projects with a choice of up to NVIDIA RTX™ 5000 Ada Laptop GPU;⁴ certified for pro apps.

Lightning-Fast Storage

Blitz through multiple tasks and ditch external drives with up to 16 TB local NVMe storage.^{5,6}

Large Memory Configurations

Accelerate your workflow. Power through projects with up to 128 GB RAM⁷ for fast rendering, editing and visual effects performance.

HP DreamColor Display

Have confidence in what you see on screen with an optional HP DreamColor Display with 100% DCI-P3 color gamut and a 120Hz refresh rate you get smooth motion for high-speed videos.^{4,9}

Z Light Space

With Z Light Space software,¹⁰ customize your keyboard lighting with the RGB per-key LED backlighting.¹¹ For commonly used software apps, like Adobe Photoshop, AutoCAD or SOLIDWORKS,¹² use pre-loaded color-maps or create your own.

HP Vaporforce Thermals

Keep cool under any workload with HP Vaporforce Thermals,¹³ with curved metal blades, that protect your workstation from overheating, so you can cut through your heaviest workloads with peak processing power.

16:10 Aspect Ratio

The 16:10 aspect ratio⁹ reduces the need to scroll by showing 11% more vertical content than a 16:9 aspect ratio display. See more of your project without minimizing program menus or toolbars.

Easy Battery Management

Manage and monitor your battery's performance and condition and customize charging options with the easy-to-use HP Power Manager dashboard.¹⁵

HP Fast Charge

Long battery life gets you through a day of meetings without plugging in. Quickly recharge your PC with HP Fast Charge. You'll get up to 50% battery life in just 30 minutes of charging.¹⁶

Battery life

When you're away from the office, this sleek, ultralight PC is ready every step of the way. With long battery life, you can work on complex projects from almost anywhere.



HP ZBook Fury 16 inch G11 Mobile Workstation PC

Technical specifications

Available Operating Systems	Windows 11 Pro ¹ Windows 11 Home - HP recommends Windows 11 Pro for business ¹ Ubuntu 22.04 LTS FreeDOS 3.0
Processor family ^{3,4,5,19,25}	13th Generation Intel® Core™ i9 processor 13th Generation Intel® Core™ i7 processor 13th Generation Intel® Core™ i5 processor Intel® Core™ i7 14th generation processor Intel® Core™ i9 14th generation processor
Available Processors ^{3,4,5,19,25}	Intel® Core™ i9-13950HX with Intel® UHD Graphics (1.6 GHz E-core base frequency, 2.2 GHz P-core base frequency, up to 4.0 GHz E-core Max Turbo frequency, up to 5.5 GHz P-core Max Turbo frequency, 36 MB L3 cache, 8 P-cores and 16 E-cores, 32 threads), supports Intel® vPro® Technology Intel® Core™ i7-13850HX with Intel® UHD Graphics (1.5 GHz E-core base frequency, 2.1 GHz P-core base frequency, up to 3.8 GHz E-core Max Turbo frequency, up to 5.3 GHz P-core Max Turbo frequency, 30 MB L3 cache, 8 P-cores and 12 E-cores, 28 threads), supports Intel® vPro® Technology Intel® Core™ i5-13600HX with Intel® UHD Graphics (1.9 GHz E-core base frequency, 2.6 GHz P-core base frequency, up to 3.6 GHz E-core Max Turbo frequency, up to 4.8 GHz P-core Max Turbo frequency, 24 MB L3 cache, 6 P-cores and 8 E-cores, 20 threads), supports Intel® vPro® Technology Intel® Core™ i9-14900HX with Intel® UHD Graphics (1.6 GHz E-core base frequency, 2.2 GHz P-core base frequency, up to 4.1 GHz E-core Max Turbo frequency, up to 5.8 GHz P-core Max Turbo frequency, 36 MB L3 cache, 8 P-cores and 16 E-cores, 32 threads) Intel® Core™ i7-14700HX with Intel® UHD Graphics (1.5 GHz E-core base frequency, 2.1 GHz P-core base frequency, up to 3.9 GHz E-core Max Turbo frequency, up to 5.5 GHz P-core Max Turbo frequency, 33 MB L3 cache, 8 P-cores and 12 E-cores, 24 threads)
Chipset	Intel® WM790
Maximum memory	128 GB DDR5-5600 ECC SODIMM; 128 GB DDR5-5600 non-ECC SODIMM; ⁷ Transfer rates up to 4000 MT/s.
Memory slots	4 SODIMM; supports dual channel ^{9,9,10}
Internal storage	512 GB up to 4 TB PCIe® Gen4 x4 NVMe™ M.2 SSD ¹¹ 512 GB up to 2 TB PCIe® NVMe™ M.2 SED SSD ¹¹
Display size (diagonal)	16"
Display size (diagonal, metric)	40.6 cm (16")
Display	16" diagonal, WQUXGA (3840 x 2400), OLED, touch, BrightView, eDP + PSR, micro-edge, Low Blue Light, 400 nits, 100% DCI-P3; 16" diagonal, WQUXGA (3840 x 2400), 120 Hz, IPS, anti-glare, eDP + PSR, micro-edge, 500 nits, 100% DCI-P3, HP DreamColor; 16" diagonal, WUXGA (1920 x 1200), IPS, anti-glare, eDP + PSR, micro-edge, 400 nits, 100% sRGB; 16" diagonal, WUXGA (1920 x 1200), IPS, anti-glare, eDP + PSR, micro-edge, 1000 nits, 100% sRGB, HP Sure View integrated privacy screen; 16" diagonal, WUXGA (1920 x 1200), IPS, touch, BrightView, eDP + PSR, micro-edge, 400 nits, 100% sRGB ^{21,23,32,39} 40.6 cm (16") diagonal, WQUXGA (3840 x 2400), OLED, touch, BrightView, eDP + PSR, micro-edge, Low Blue Light, 400 nits, 100% DCI-P3; 40.6 cm (16") diagonal, WQUXGA (3840 x 2400), 120 Hz, IPS, anti-glare, eDP + PSR, micro-edge, 500 nits, 100% DCI-P3, HP DreamColor; 40.6 cm (16") diagonal, WUXGA (1920 x 1200), IPS, anti-glare, eDP + PSR, micro-edge, 400 nits, 100% sRGB; 40.6 cm (16") diagonal, WUXGA (1920 x 1200), IPS, anti-glare, eDP + PSR, micro-edge, 1000 nits, 100% sRGB, HP Sure View integrated privacy screen; 40.6 cm (16") diagonal, WUXGA (1920 x 1200), IPS, touch, BrightView, eDP + PSR, micro-edge, 400 nits, 100% sRGB ^{21,23,32,39}
Available Graphics	Integrated: Intel® UHD Graphics Discrete: NVIDIA RTX™ 5000 Ada Generation Laptop GPU (16 GB GDDR6 dedicated); NVIDIA RTX™ 4000 Ada Generation Laptop GPU (12 GB GDDR6 dedicated); NVIDIA RTX™ 3500 Ada Generation Laptop GPU (12 GB GDDR6 dedicated); NVIDIA RTX™ 2000 Ada Generation Laptop GPU (8 GB GDDR6 dedicated); NVIDIA RTX™ 1000 Ada Generation Laptop GPU (6 GB GDDR6 dedicated) (Discrete graphics options planned to be available at a later date and require factory configuration at the time of hardware purchase.)
Audio	Audio by Poly Studio, dual stereo speakers, HP World Facing Microphone dual array digital microphones, functions keys for volume up and down, combo microphone/headphone jack, HD audio ⁴⁵
Wireless technologies	Intel® Wi-Fi 7 BE200 (2x2) and Bluetooth® 5.4 wireless card, vPro®; Intel® Wi-Fi 7 BE200 (2x2) and Bluetooth® 5.4 wireless card, non-vPro® ¹³ NFC; NFC Mirage WNC XRVA-1 NFC
Ports and connectors	Right side: 1 RJ-45; 1 headphone/microphone combo; 1 SuperSpeed USB Type-A 5Gbps signaling rate (charging); 1 SuperSpeed USB Type-A 5Gbps signaling rate ; Left side: 1 power connector; 2 Thunderbolt™ 4 with USB4™ Type-C® 40Gbps signaling rate (USB Power Delivery, DisplayPort™ 1.4, HP Sleep and Charge); 1 HDMI 2.1; 1 Mini DisplayPort™ 1.4a ^{5,15,24,46,57}
Input devices	HP Premium Quiet Keyboard, spill-resistant, full-size, backlit, keyboard with a Programmable Key and numeric keypad; HP RGB Keyboard - Full-size, per-key RGB backlit keyboard; Extra large, QuietKey, 3-button touchpad
Communications	LAN: Intel® I219-LM GbE, vPro®; Intel® I219-V PCIe® GbE NIC, non-vPro® ⁴⁴ ; WWAN: HP 4000 4G LTE Advanced Pro; HP 5000 5G Solution ¹⁴
Camera	5MP IR Camera ^{17,18}
Software	Bing Search for IE11; HP Hotkey Support ; HP Noise Cancellation Software ; HP Recovery Manager ; HP Support Assistant ³⁵ ; HP JumpStart ; HP Native Miracast Support ²⁸ ; HP Connection Optimizer ³⁶ ; Adobe® Creative Cloud ; HP Cloud Recovery ^{26,29} ; HP Admin ; HP Privacy Settings ; HP Data Science Stack ³³ ; HP Easy Clean ⁵⁹ ; HP PC Hardware Diagnostics ; HP Services Scan ¹² ; Buy Office
Available software	HP Smart Support ⁴³
Security management	Absolute persistence module ^{31,40} ; HP Device Access Manager; HP Power On Authentication; HP Security Manager; Integrated smart card reader; Master Boot Record security; Preboot authentication; HP Sure Click ²⁷ ; Windows Defender; HP Secure Erase ⁴⁷ ; HP Manageability Integration Kit ³⁰ ; HP Sure Sense ⁵⁰ ; HP Secure Platform; HP Sure Recover Gen3 ⁴⁹ ; HP BIOSphere Gen6 ²² ; HP Sure Start Gen6 ³⁸ ; HP Sure Run Gen3 ⁵¹ ; Nano Security Lock Slot ³⁴ ; HP Client Security Suite Gen7; Trusted Platform Module TPM 2.0; Windows Secured Core; Camera privacy shutter
Security Software Licenses	HP Wolf Pro Security Edition ⁵⁶
Fingerprint reader	Fingerprint sensor (select models)



HP ZBook Fury 16 inch G11 Mobile Workstation PC

Technical specifications

Management features	HP Power Manager ¹⁶
Memory card device	1 SD 7.1 media card reader (select models)
Power	HP Slim Smart 150 W External AC power adapter; HP Slim Smart 200 W External AC power adapter; HP Slim Smart 230 W External AC power adapter ²⁰
Battery type	HP Long Life 8-cell, 95 Wh Li-ion polymer ^{37,53} ;
Dimensions	14.02 x 9.54 x 0.76 in (non-touch); 14.02 x 9.54 x 0.72 in (touch); 35.6 x 24.2 x 1.9 cm (non-touch); 35.6 x 24.2 x 1.8 cm (touch); 21.73 x 2.71 x 13.58 in 552 x 69 x 345 mm (Package)
Weight	Starting at 5.3 lb; Starting at 2.4 kg; (Weight varies by configuration and components.)
Ecolabels	EPEAT® registered configurations available ⁴¹
Sustainable impact specifications	Low Halogen ⁴²



HP ZBook Fury 16 inch G11 Mobile Workstation PC

Footnotes

Messaging Footnotes

- ¹ Unthrottled in Best Performance Mode and when plugged in.
- ² Multicore is designed to improve performance of certain software products. Not all customers or software applications will necessarily benefit from use of this technology. Performance and clock frequency will vary depending on application workload and your hardware and software configurations. Intel's numbering, branding and/or naming is not a measurement of higher performance.
- ³ Optional feature that must be configured at purchase.
- ⁴ Optional, configurable feature.
- ⁵ For storage drives, GB = 1 billion bytes. TB = 1 trillion bytes. Actual formatted capacity is less. Up to 35GB (for Windows) is reserved for system recovery software. Optional, configurable feature.
- ⁶ Optional feature that must be configured at purchase.
- ⁷ RGB keyboard is an optional feature that must be configured at purchase. Available in the US, UK, Germany and France only.
- ⁸ Recycled plastic content percentage is based on the definition set in the IEEE 16801:2018 standard.
- ⁹ Based on US EPEAT® registration according to IEEE 16801:2018 EPEAT®. EPEAT® status varies by country. Visit www.epeat.net for more information.
- ¹⁰ 100% outer box packaging made from sustainably sourced certified and recycled fibers. Fiber cushions made from 100% recycled wood fiber and organic material. Any plastic cushions are made from >90% recycled plastic.
- ¹¹ All specifications represent the typical specifications provided by HP's component manufacturers; actual performance may vary either higher or lower.
- ¹² Not all features are available in all editions or versions of Windows. Systems may require upgraded and/or separately purchased hardware, drivers, software or BIOS update to take full advantage of Windows functionality. Windows is automatically updated and enabled. High speed internet and Microsoft account required. ISP fees may apply, and additional requirements may apply over time for updates. See <http://www.windows.com>.
- ¹³ Multicore is designed to improve performance of certain software products. Not all customers or software applications will necessarily benefit from use of this technology. Performance and clock frequency will vary depending on application workload and your hardware and software configurations. Intel's numbering, branding and/or naming is not a measurement of higher performance. Optional feature that must be configured at purchase.
- ¹⁴ Intel vPro® requires Windows 10 Pro 64 bit or higher, a vPro supported processor, vPro enabled chipset, vPro enabled wired LAN and/or Wi-Fi 6E WLAN and TPM 2.0. Some functionality requires additional 3rd party software in order to run. Features of vPro® Essentials and Enterprise vary. See <http://intel.com/vpro>
- ¹⁵ Optional feature that must be configured at purchase.
- ¹⁶ For storage drives, GB = 1 billion bytes. TB = 1 trillion bytes. Actual formatted capacity is less. up to 35GB (for Windows) is reserved for system recovery software.
- ¹⁷ Optional, configurable feature.
- ¹⁸ Up to 64GB memory is an optional, configurable feature.
- ¹⁹ All specifications represent the typical specifications provided by HP's component manufacturers; actual performance may vary either higher or lower.
- ²⁰ Z Light Space requires Windows 10 or higher.
- ²¹ RGB keyboard is an optional, configurable feature. Available only in the US, UK, Germany and France only.
- ²² Software sold separately.
- ²³ The HP custom vapor chamber (Z VaporForce) is only available on configurations with NVIDIA RTX™ 3000 Ada Generation Laptop GPU and higher GFX.

Specification Footnotes

- ¹ Not all features are available in all editions or versions of Windows. Systems may require upgraded and/or separately purchased hardware, drivers, software or BIOS update to take full advantage of Windows functionality. Windows is automatically updated and enabled. High speed internet and Microsoft account required. ISP fees may apply and additional requirements may apply over time for updates. See <http://www.windows.com>.
- ² Multicore is designed to improve performance of certain software products. Not all customers or software applications will necessarily benefit from use of this technology. Performance and clock frequency will vary depending on application workload and your hardware and software configurations. Intel's numbering, branding and/or naming is not a measurement of higher performance.
- ³ Intel® Turbo Boost performance varies depending on hardware, software and overall system configuration. See www.intel.com/technology/turboboost for more information.
- ⁴ In accordance with Microsoft's support policy, HP does not support the Windows 8 or Windows 7 operating system on products configured with Intel and AMD 7th generation and forward processors or provide any Windows 8 or Windows 7 drivers on <http://www.support.hp.com>
- ⁵ HDMI port-cable not included.
- ⁶ Due to the non-industry standard nature of some third-party memory modules, we recommend HP branded memory to ensure compatibility. If you mix memory speeds, the system will perform at the lower memory speed.
- ⁷ Maximized dual-channel performance requires SODIMMs of the same size and speed in both memory channels.
- ⁸ Intel® allows architectures designed with four DIMM slots to run up to 4000 MT/s.
- ⁹ Maximum memory capacities assume Windows 64-bit operating systems. With Windows 32-bit operating systems, memory above 3 GB may not all be available due to system resource requirements.
- ¹⁰ For storage drives, GB = 1 billion bytes. TB = 1 trillion bytes. Actual formatted capacity is less. Up to 35GB (for Windows) is reserved for system recovery software.
- ¹¹ HP Services Scan is provided with Windows Update on select products and will check entitlement on each hardware device to determine if an HP TechPulse-enabled service has been purchased, and will download applicable software automatically. HP TechPulse is a telemetry and analytics platform that provides critical data around devices and applications. For full system requirements or to disable this feature, please visit <http://www.hpdaas.com/requirements>. Not applicable in China.
- ¹² Wi-Fi 7 requires a Wi-Fi 7 router, sold separately, to function in the greater than 6GHz band. Availability of public wireless access points limited. Wi-Fi 7 is backwards compatible with prior 802.11 specs. And available in countries where Wi-Fi 7 is supported.
- ¹³ 5G module is optional and must be configured at the factory. Module designed for 5G NR NSA (non-standalone) networks as carriers deploy Evolved-Universal Terrestrial Radio Access New Radio Dual Connectivity (ENDC) with both 100MHz of 5G NR and LTE channel bandwidth, using 256QAM 4x4 as defined by 3GPP. Module requires activation and separately purchased service contract. Check with service provider for coverage and availability in your area. Data connection, upload and download speeds will vary due to network, location, environment, network conditions, and other factors. Backwards compatible to 4G LTE and 3G HSPA technologies. 5G module planned to be available in select platforms and select countries, where carrier supported.
- ¹⁴ Mini DisplayPort 1.4 with discrete, 12 with UMA.
- ¹⁵ Manage and monitor your battery's performance and condition and customize charging options with the easy-to-use HP Power Manager dashboard.
- ¹⁶ FHD and HD content required to view HD images respectively.
- ¹⁷ Windows Hello face authentication utilizes a camera specially configured for near infrared (IR) imaging to authenticate and unlock Windows devices as well as unlock your Microsoft Passport.
- ¹⁸ Processor speed denotes maximum performance mode; processors will run at lower speeds in battery optimization mode.
- ¹⁹ 150 W power adapter is configurable with Intel UMA graphics. 200 W power adapter is configurable with NVIDIA RTX A1000 and RTX A2000 configurations. 230 W power adapter is configurable with NVIDIA RTX A3000 or higher.
- ²⁰ UHD content required to view UHD images.
- ²¹ HP BIOSphere Gen6 features may vary depending on the platform and configuration.
- ²² Resolutions are dependent upon monitor capability and the resolution and color depth settings.
- ²³ SuperSpeed USB 20Gbps is not available with Thunderbolt™ 4.
- ²⁴ Intel vPro® requires Windows 10 Pro 64 bit or higher, a vPro supported processor, vPro enabled chipset, vPro enabled wired LAN and/or Wi-Fi 6E WLAN and TPM 2.0. Some functionality requires additional 3rd party software in order to run. Features of vPro® Essentials and Enterprise vary. See <http://intel.com/vpro>
- ²⁵ HP Cloud Recovery is available for HP Elite and Pro desktops and laptops PCs with Intel® or AMD processors and requires an open, wired network connection. Note: You must back up important files, data, photos, videos, etc. before use to avoid loss of data. Detail please refer to: <https://support.hp.com/us-en/document/c05115630>.
- ²⁶ HP Sure Click requires Windows 11 Pro or higher. See <https://bit.ly/2PrLT6A>, SureClick for complete details.
- ²⁷ Miracast is a wireless technology your PC can use to project your screen to TVs, projectors, and streaming media players that also support Miracast. You can use Miracast to share what you're doing on your PC and present a slide show. For more information: <http://windows.microsoft.com/en-us/windows-8/project-wireless-screen-miracast>.
- ²⁸ Available on select HP PCs with Windows 11 and Intel processors.
- ²⁹ HP Manageability Integration Kit can be downloaded from <http://www.hp.com/go/clientmanagement>
- ³⁰ Absolute Persistence Module: Absolute agent is shipped turned off, and will be activated when customers activate a purchased subscription. Subscriptions can be purchased for terms ranging multiple years. Service is limited, check with Absolute for availability outside the US. The Absolute Recovery Guarantee is a limited warranty. Certain conditions apply. For full details visit: <http://www.absolute.com/company/legal/agreements/compruace-agreement>. Data Delete is an optional service provided by Absolute Software. If utilized, the Recovery Guarantee is null and void. In order to use the Data Delete service, customers must first sign a Pre-Authorization Agreement and either obtain a PIN or purchase one or more RSA SecurID tokens from Absolute Software.
- ³¹ Actual brightness will be lower with HP Sure View or touch-screen.
- ³² Data Science Stack is available on select SKUs only.
- ³³ Security lock for security slot is sold separately.
- ³⁴ HP Support Assistant requires Windows and Internet access.
- ³⁵ HP Connection Optimizer requires Windows 10.
- ³⁶ Battery is internal and not replaceable by customer. Serviceable by warranty. Batteries have a default one year limited warranty except for Long Life batteries which will have same 1-year or 3-year warranty as the platform.
- ³⁷ HP Sure Start Gen6 is available on select HP PCs.
- ³⁸ HP Sure View Reflect integrated privacy screen is an optional feature that must be configured at purchase and is designed to function in landscape orientation.
- ³⁹ HP Tamper Lock not supported on Ubuntu OS.
- ⁴⁰ Based on US EPEAT® registration according to IEEE 16801:2018 EPEAT®. EPEAT® status varies by country. Visit www.epeat.net for more information.
- ⁴¹ External power supplies, WLAN modules, power cords, cables and peripherals excluded. Service parts obtained after purchase may not be Low Halogen.
- ⁴² HP Smart Support requires the HP Insights agent to be installed. For Gen 9 and earlier HP commercial devices, customer must manually download at hp.com/active-care or by providing consent at the time of your hardware's first boot, which enables HP to install the HP Insights Agent to collect information related to the Device. For HP commercial Gen 10 and higher devices, HP Services Scan is provided thru Windows Update and will check entitlement on each hardware device to determine if an HP TechPulse-enabled service has been purchased and, will download applicable software automatically. To disable this feature, please follow the instructions at <http://www.hpdaas.com/requirements>. The HP Insights agent is a telemetry and analytics platform that provides critical data around devices and applications and is not sold as a standalone service. HP follows stringent GDPR privacy regulations and is ISO27001, ISO27701, ISO27017 and SOC2 Type2 certified for Information Security. Internet access with connection to portal is required. For full system requirements, please visit <http://www.hpdaas.com/requirements>.
- ⁴³ GbE - The term "10/100/1000" or "Gigabit" Ethernet indicates compatibility with IEEE standard 802.3ab for Gigabit Ethernet, and does not connote actual operating speed of 1 Gb/s. For high-speed transmission, connection to a Gigabit Ethernet server and network infrastructure is required.
- ⁴⁴ Dual-microphone array when equipped with optional webcam and optional world facing microphone.
- ⁴⁵ For the methods outlined in the National Institute of Standards and Technology Special Publication 800-88 "Clear" sanitation method. HP Secure Erase does not support platforms with Intel® Optane®.
- ⁴⁶ HDMI 2.0b with discrete, 1.4 with UMA.
- ⁴⁷ HP Sure Recover Gen3 is available on select HP PCs and requires an open network connection. You must back up important files, data, photos, videos, etc. before using HP Sure Recover to avoid loss of data.
- ⁴⁸ HP Sure Sense is available on select HP PCs and is not available with Windows10 Home.
- ⁴⁹ HP Sure Run Gen3 is available on select Windows 10 or 11 Pro or higher based HP Pro, Elite and Workstation PCs with Intel® or AMD processors.
- ⁵⁰ LPWAN does not support Internet use.
- ⁵¹ Actual battery Watt-hours (Wh) will vary from design capacity. Battery capacity will naturally decrease with shelf life, time, usage, environment, temperature, system configuration, loaded apps, features, power management settings and other factors.
- ⁵² HP Wolf Pro Security Edition (including HP Sure Click Pro and HP Sure Sense Pro) is available preloaded on select SKUs and, depending on the HP product purchased, includes a paid 1-year or 3-year license. The HP Wolf Pro Security Edition software is licensed under the license terms of the HP Wolf Security Software - End-User license Agreement (EULA) that can be found at: https://support.hp.com/us-en/document/ish_3875769-3873014-16 as that EULA is modified by the following: "7. Term. Unless otherwise terminated earlier pursuant to the terms contained in this EULA, the license for the HP Wolf Pro Security Edition (HP Sure Sense Pro and HP Sure Click Pro) is effective upon activation and will continue for either a twelve (12) month or thirty-six (36) month license term ("Initial Term"). At the end of the Initial Term you may either (a) purchase a renewal license for the HP Wolf Pro Security Edition from HP.com, HP Sales or an HP Channel Partner, or (b) continue using the standard versions of HP Sure Click and HP Sure Sense at no additional cost with no future software updates or HP Support.
- ⁵³ Thunderbolt™ 4 and USB4™ maximum speed of 40Gbps will be divided between the different data workstreams.
- ⁵⁴

