



We love that you are rocking JLab!
We take pride in our products and fully stand behind them.

EPIC MECHANICAL
 KEYBOARD



YOUR WARRANTY

All warranty claims are subject to JLab authorization and at our sole discretion. Retain your proof of purchase to ensure warranty coverage.



CONTACT US

Reach out to us at support@jlab.com or visit jlab.com/contact

REGISTER TODAY

jlab.com/register

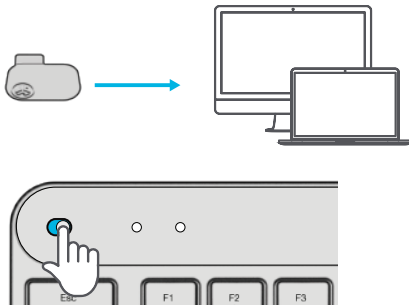
Product updates | How-to tips
 FAQs & more

1 CONNECT WITH DONGLE

Install 2.4G USB dongle and switch keyboard on

Epic Mechanical Keyboard will auto connect

If connection is unsuccessful, press and hold 2.4 until button flashes quickly. Unplug and re-plug dongle into computer.



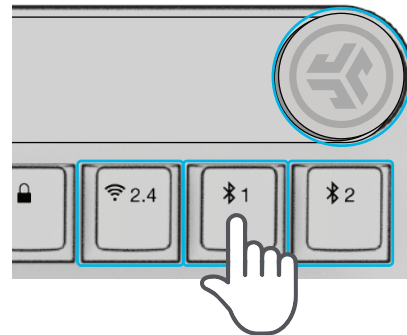
2 CONNECT WITH BLUETOOTH

Press and hold $\text{Bt}1$ or $\text{Bt}2$ for Bluetooth pairing

LED will blink in pairing mode

Press and hold CONNECT

Select "Epic Mechanical KB" in device settings



Have a JLab Epic or JBuds Mouse?

Scan the QR code to learn how to pair both your devices with just one dongle.

3 KEYS

BATTERY



100%-20%



Less than 20%

Fn + F1-F12:

Shortcut keys (see Shortcut Keys list)

USB-C Charge Input



Shortcut keys

MEDIA DIAL

Vol +/- : Rotate

Play/Pause: Single press

Track Forward: Double press

Track Back: Press and hold

Fn + Esc:

Fn lock On/Off

Fn + Q / W / E:

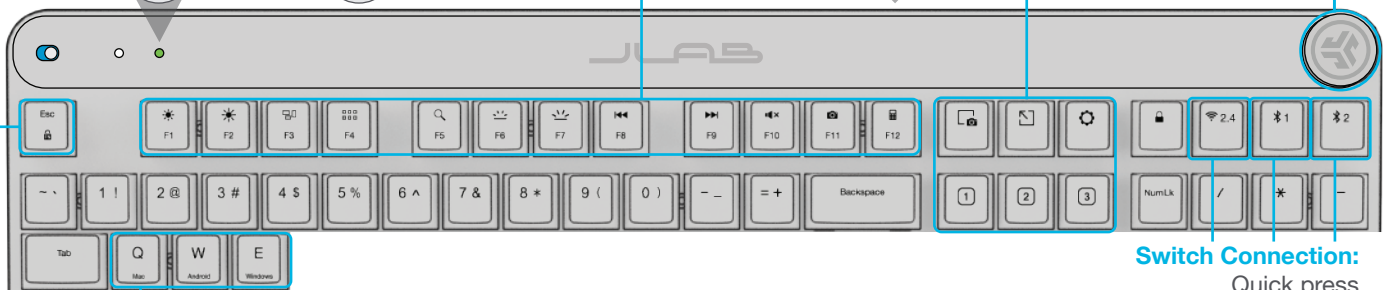
Switch Mac / Windows / Android keys layout

Switch Connection:

Quick press

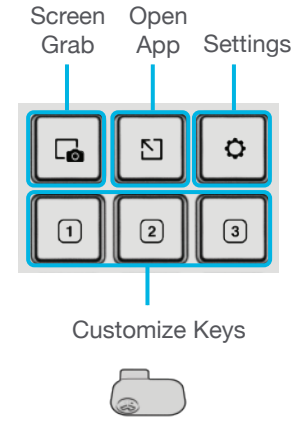
Pairing Mode:

Press and hold



SHORTCUT KEYS

Fn +	MAC	PC	Android
Esc	FN Lock	FN Lock	FN Lock
F1	Brightness -	Brightness -	Brightness -
F2	Brightness +	Brightness +	Brightness +
F3	Task Control	Task Control	N/A
F4	Show Applications	Notification Center	N/A
F5	Search	Search	Search
F6	Backlit -	Backlit -	Backlit -
F7	Backlit +	Backlit +	Backlit +
F8	Track Back	Track Back	Track Back
F9	Track Forward	Track Forward	Track Forward
F10	Mute	Mute	Mute
F11	Screenshot	Screenshot	N/A
F12	N/A	Calculator	N/A



Customize the Epic Mechanical KB with USB dongle + JLab Work App
jlab.com/software



[Shop products](#) | [Product alerts](#) | [Burn-in your headphones](#)

JLab Store + Burn-in Tool

