



Dell Pro 7

Rechargeable Compact Keyboard and Mouse

KM746

User's Guide

Notes, cautions, and warnings

-  **NOTE:** A NOTE indicates important information that helps you make better use of your product.
-  **CAUTION:** A CAUTION indicates either potential damage to hardware or loss of data and tells you how to avoid the problem.
-  **WARNING:** A WARNING indicates a potential for property damage, personal injury, or death.

Contents

About your keyboard and mouse	4
Package contents	4
Information available on the packaging	5
Features	6
Mouse	6
Keyboard	7
Launch Copilot in Windows	8
Dell Display and Peripheral Manager	9
Installing Dell Display and Peripheral Manager	9
Setting up your wireless mouse	10
Setting up your wireless keyboard	12
Pairing with a USB receiver	13
Pairing your wireless keyboard and mouse using Swift Pair	14
Pairing your wireless keyboard and mouse using Bluetooth	16
Pairing device two using Bluetooth	17
Switching between paired devices	19
Smart Connect	19
Mouse specifications	20
General	20
Electrical	20
Physical characteristics	20
Environmental	20
Wireless	21
Keyboard specifications	22
General	22
Electrical	22
Physical characteristics	22
Environmental	22
Wireless	23
Troubleshooting	24
Statutory information	28
Warranty	28
Limited warranty and return policies	28
For U.S. customers	28
For European, Middle Eastern and African customers	28
For non-U.S. customers:	28
European Accessibility Act	29
Revision history	30

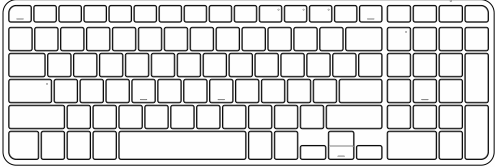
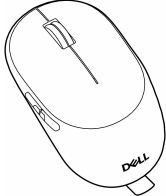


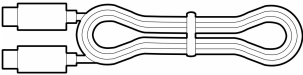
About your keyboard and mouse

Package contents

The following table provides the list of components that are shipped with your keyboard and mouse. If any component is missing, contact Dell. For more information, see [Contacting Dell](#).

NOTE: Some items may be optional and may not ship with your keyboard and mouse. Some features may not be available in certain countries.

Table 1. Components and descriptions

Component image	Component description
	Dell KB746 Keyboard
	Dell MS746 Mouse
	Dell Secure Link USB receiver NOTE: The Dell Secure Link USB receiver is placed in the mouse USB storage compartment. NOTE: The Dell Secure Link USB receiver is referred to as USB receiver in the rest of the document.
	Document NOTE: Scan the QR code to access the information about setting up, features, specifications, and troubleshooting.
	USB-C to USB-C cable (for battery charging only)

Information available on the packaging

The product is compatible with the following operating systems:

- Windows
- macOS
- iOS
- Red Hat
- Ubuntu
- ChromeOS

The following are the accessories that ship within the box:

- Dell Secure Link USB receiver (inside the mouse)
- USB-C to USB-C cable

For information about recycling, see the [Dell recycling](#) website.

Features

Mouse

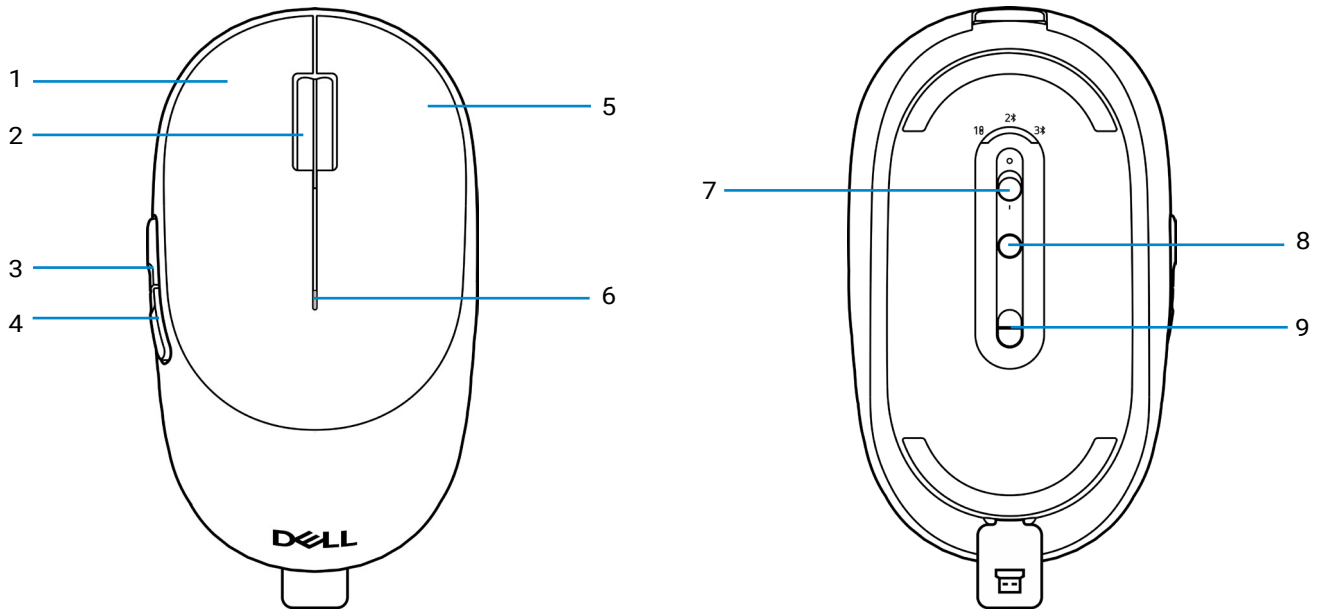


Figure 1. Top and Bottom views

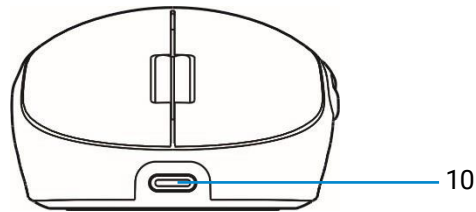


Figure 2. Front view

Table 2. Mouse components

Callout	Description	Callout	Description
1	Left button	2	Scroll wheel
3	Page up button	4	Page down button
5	Right button	6	Battery-status light (Supercapacitor)
7	Power switch	8	Connection-mode button
9	Optical sensor	10	USB charging port

NOTE: Open the mouse cover to access the PPID/Regulatory label location. Remove the USB receiver before use.



Figure 3. Regulatory and PPID label location on the mouse

Keyboard

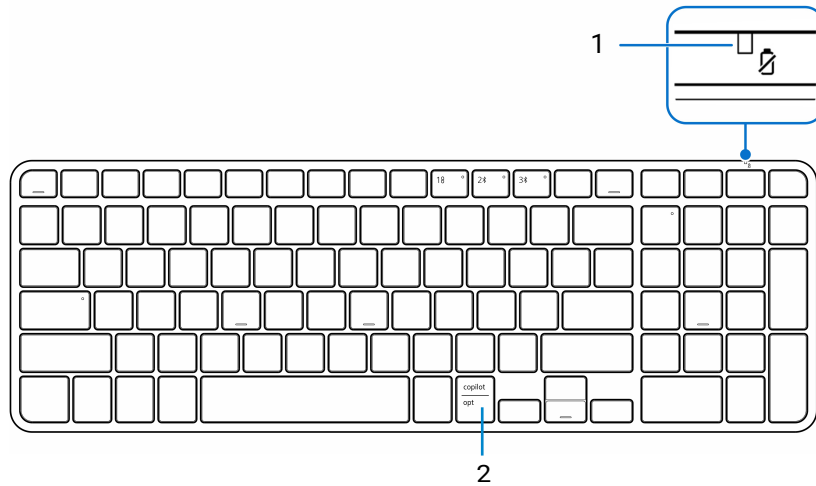


Figure 1. Top view

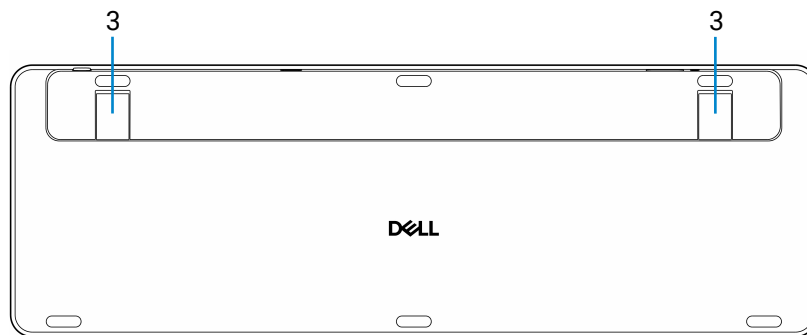


Figure 2. Bottom view

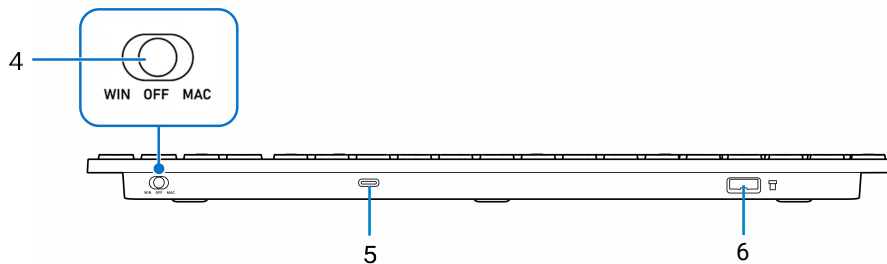


Figure 3. Back view

Table 2. Keyboard components

Callout	Description	Callout	Description
1	Battery-status light (Supercapacitor)	2	Copilot or Option key
3	Keyboard feet	4	Power switch
5	USB charging port	6	USB receiver storage slot

- ⓘ **NOTE:** Only one USB receiver is required for both the keyboard and mouse. The USB receiver is stored inside the mouse in the USB storage compartment.
- ⓘ **NOTE:** The Num Lock and Caps Lock LEDs remain on for five seconds after pressing the respective keys. The LEDs turn off, even if you continue typing in their current state. The LEDs turn on again upon pressing the keys. The lock state is reflected in the On Screen Display (OSD) on computers with Dell Display and Peripheral Manager.
- ⓘ **NOTE:** The key function is for partial screenshot, using the hotkey combination Shift + Windows + S.

Launching Copilot in Windows

- ① **NOTE:** Use the copilot key with supported Windows 11 devices. The feature availability varies by device and market, see aka.ms/KeySupport
- ① **NOTE:** Copilot in Windows is available only in approved markets.
- ① **NOTE:** The PPID/Regulatory label is on the bottom case.

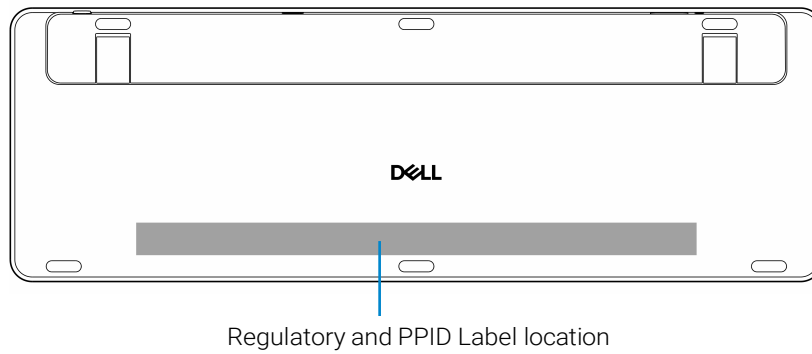


Figure 7. Regulatory and PPID label location on the keyboard


Dell Display and Peripheral Manager

Dell Display and Peripheral Manager is an app that helps you set up and configure your Dell monitors and peripherals. With this app you can:

- Assign program shortcuts to device programmable buttons or keys through **Button Customization** tab or **Key Customization** tab. You can even set shortcuts specific to an app with App settings.
- View the device information such as firmware version and battery status for wireless devices.
- Upgrade to the latest firmware for your device.
- Configure the DPI setting and set the primary mouse button.
- Pair or unpair to the USB receiver.

Installing Dell Display and Peripheral Manager

When you connect the device to your computer for the first time, you may be prompted to download and install the app.

 **NOTE:** If the download prompt does not appear within a few minutes, you can manually install the software from Dell.com/support/DDPM.

For more information, expand **Support Resources** and click **Manuals & Documents** to access the *Dell Display and Peripheral Manager User's Guide*.

Setting up your wireless mouse

1. Charge the battery in your wireless mouse.
 2. Connect one end of the USB-C charging cable to the USB-C port on the mouse and the other end to an available USB-C port on your computer, desktop, or compatible mobile device.
- ⓘ **NOTE:** European Union (EU) has a common charger requirement for wireless products that have an embedded rechargeable battery.
 - ⓘ **NOTE:** Your wireless mouse has a rechargeable battery. For best results, ensure that the battery is fully charged before using your mouse for the first time.
 - ⓘ **NOTE:** To improve the run time and for long-term performance, turn off the power switch when the wireless mouse is not in use.

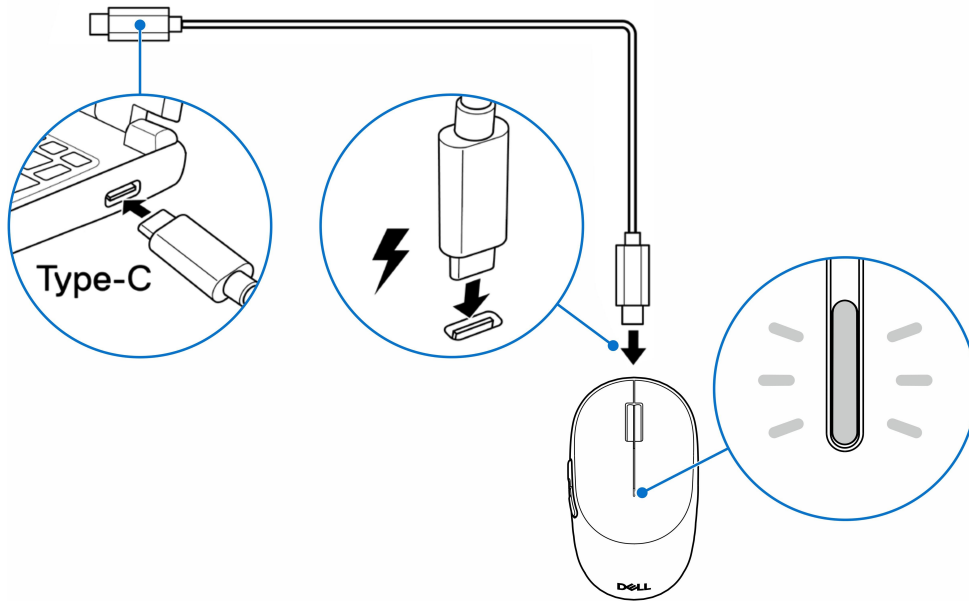


Figure 8. Charging the mouse

The white low battery-status light blinks until the battery is fully charged or the USB charging cable is unplugged.

- ⓘ **NOTE:** During charging, the low battery-status light turns on even if the mouse is turned off.
- ⓘ **NOTE:** The USB-C charging cable can be used only for charging the mouse.

Table 4. Mouse battery LED behavior

Charging level	LED behavior
Low power ($\leq 5\%$)	White blinking for 10 seconds, then off for 50 seconds, repeating this cycle.
Normal power ($> 5\%$)	White for three seconds when turned on, then turns off. Remains off during normal use.
Charging	Blinking in white.
Fully charged	Static white for 10 seconds, then turns off.

3. Locate the slot at the back of the mouse. Using your fingertip, pry open the base cover.

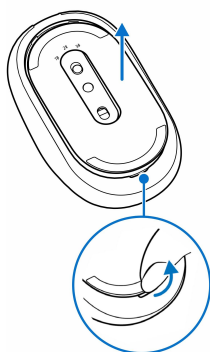


Figure 9. Opening the base cover

4. Remove the USB receiver from the USB storage compartment.

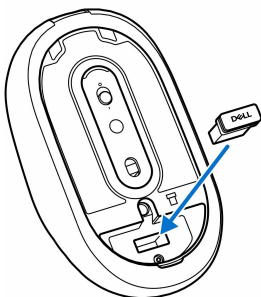


Figure 10. Removing the USB receiver

5. Replace the base cover.

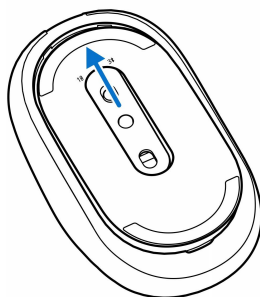


Figure 11. Replacing the base cover

6. Slide the power switch down to turn on the mouse.

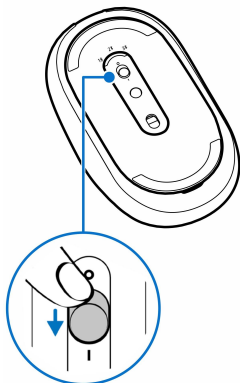


Figure 12. Turning on the mouse

Setting up your wireless keyboard

1. Charge the battery in your wireless keyboard.
 2. Connect one end of the USB-C charging cable to the USB-C port on the keyboard and the other end to an available USB-C port on your desktop, laptop, or compatible mobile device. The low battery-status light blinks white until the battery is fully charged or the USB-C charging cable is unplugged.
- NOTE:** European Union (EU) has a common charger requirement for wireless products that have an embedded rechargeable battery.
 - NOTE:** Your wireless keyboard has a rechargeable battery. For best results, ensure that the battery is fully charged before using your keyboard for the first time.
 - NOTE:** To improve the run time and for long-term performance, turn off the power switch when the wireless keyboard is not in use.

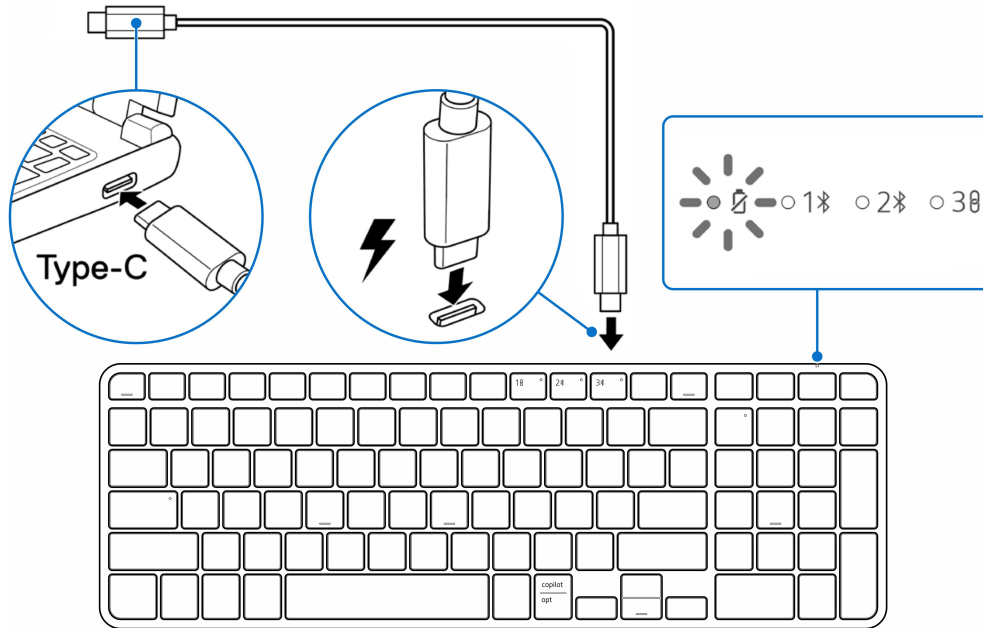


Figure 13. Charging the keyboard

- NOTE:** During charging, the low battery-status light turns on even if the keyboard is turned off.
- NOTE:** The USB-C charging cable can be used only for charging the keyboard.

Table 5. Keyboard battery LED behavior

Charging level	LED behavior
Low power ($\leq 5\%$)	White blinking for 30 seconds, then off for five minutes, repeating this cycle.
Normal power ($> 5\%$)	White for three seconds when turned on, then turns off. Remains off during normal use.
Charging	Blinking in white.
Fully charged	Static white for 10 seconds, then turns off.

3. Slide the power switch to turn on the keyboard.



Figure 14. Turning on the keyboard (MAC and Windows)

Pairing with a USB receiver

Your Dell wireless keyboard and mouse can be paired with devices using the USB receiver. You can pair and switch between a laptop, desktop, and a compatible mobile device.

- ① **NOTE:** If your computer does not support USB-A port, a USB-C to USB-A adapter (sold separately) is required.
- ① **NOTE:** The USB receiver is pre-paired in the factory with the keyboard and mouse. If it is accidentally unpaired, you can pair your keyboard and mouse again using the Dell Display and Peripheral Manager.

1. Connect the USB receiver to the USB port on your computer.

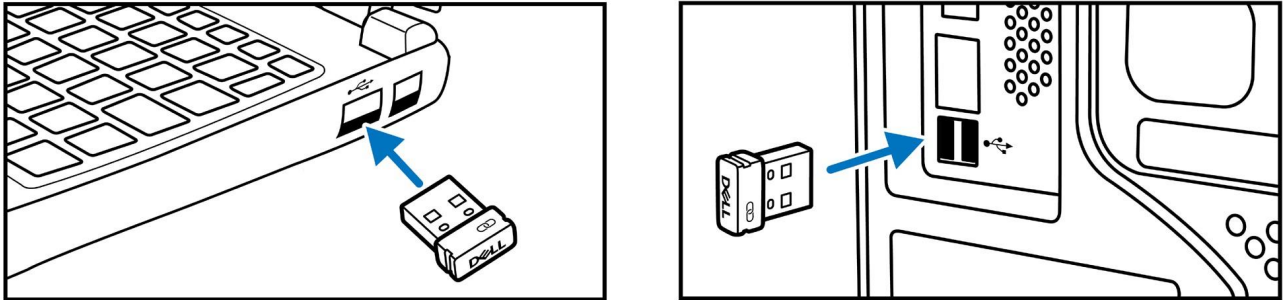


Figure 15. Connecting the USB receiver

2. Toggle the connection-mode button on your mouse until USB mode is selected (10). Press 10 on the keyboard. The LED indicator (10) turns on automatically for three seconds and then turns off.

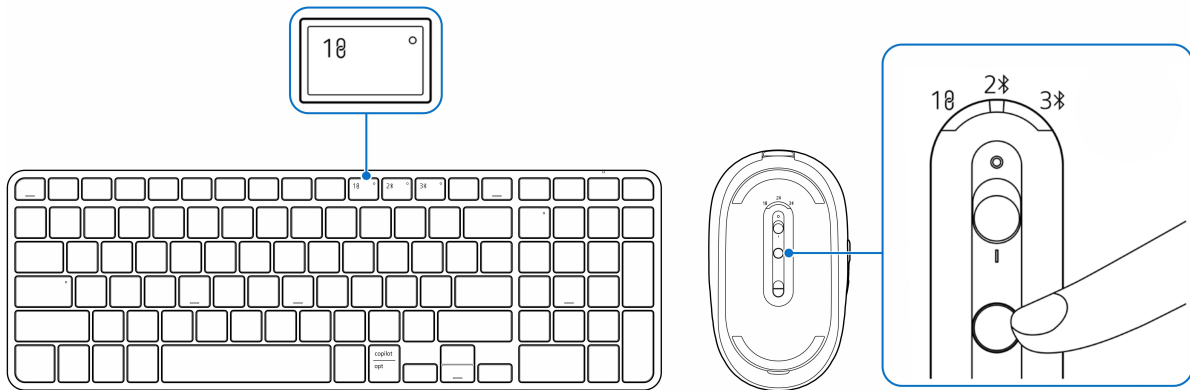


Figure 16. Selecting the USB mode

The keyboard and mouse are now connected with your computer.

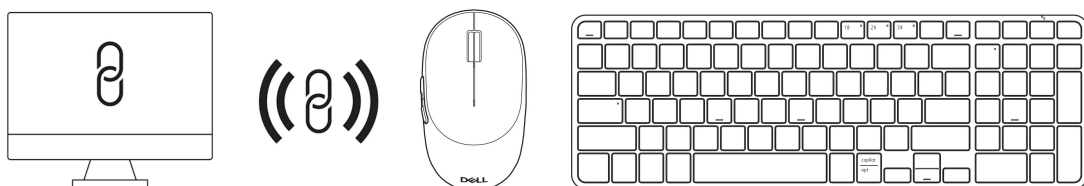


Figure 17. Keyboard and mouse are connected to the computer

Pairing your wireless keyboard and mouse using Swift Pair

1. In Windows Search, type Bluetooth.
2. Click **Bluetooth and other devices settings**. The **Settings** window appears.
3. Ensure that the **Show notifications to connect using Swift Pair** check box is selected.

Show notifications to connect using Swift Pair

When selected, you can connect to supported Bluetooth devices quickly when they're close by and in pairing mode.

Figure 18. Show notifications

4. Ensure that the Bluetooth is turned on, in your computer.
5. Place your wireless mouse near your computer. Then, press the connection-mode button to switch to the first Bluetooth pairing mode (2⇧).
6. Press the connection-mode button for three seconds. Ensure that the Bluetooth channel LED (2⇧) blinks white, indicating Bluetooth pairing is initiated. The **New Bluetooth mouse found** window appears.
7. Click **Connect** to confirm the pairing process between the wireless mouse and your computer.

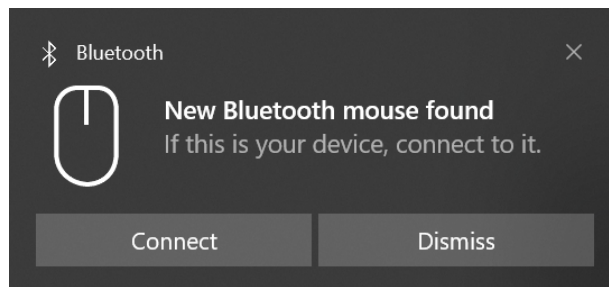


Figure 19. New Bluetooth mouse found

8. On the wireless keyboard, press 2⇧ to initiate Bluetooth pairing. The **New Bluetooth keyboard found** window appears. Click **Connect** to confirm the pairing process between the wireless keyboard and your computer.

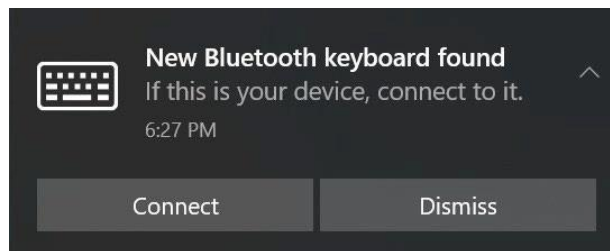


Figure 20. New Bluetooth keyboard found

9. On the wireless keyboard, type the pin number and press Enter.

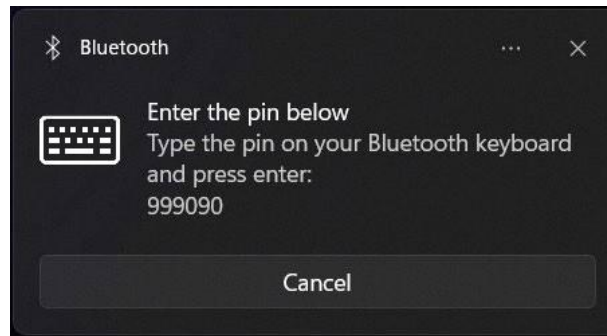


Figure 21. Type the pin on your Bluetooth keyboard and press enter

Pairing your wireless keyboard and mouse using Bluetooth

Your Dell wireless keyboard and mouse can be paired with your Bluetooth-enabled computer. You can pair and switch between laptop, desktop, and a compatible mobile device.

- ① **NOTE:** You can connect up to two devices with your wireless keyboard and mouse using Bluetooth.
 - ① **NOTE:** Before pairing your wireless keyboard and mouse using Bluetooth, ensure that you unpair the inactive devices on your computer. Update the Bluetooth Driver on your Dell computer to the latest version. For more information, see **Drivers & Downloads** at [Dell Support Site](#).
 - ① **NOTE:** Ensure that the distance between your computer and mouse is within the Bluetooth reception range.
1. Toggle the connection-mode button on the wireless mouse to switch to the first Bluetooth pairing mode labeled (2⌘).
 2. Press the connection-mode button for three seconds. Ensure that the Bluetooth channel LED (2⌘) blinks white, indicating that the Bluetooth pairing is initiated.
 3. On the wireless keyboard, press the 2⌘ keys to initiate pairing.

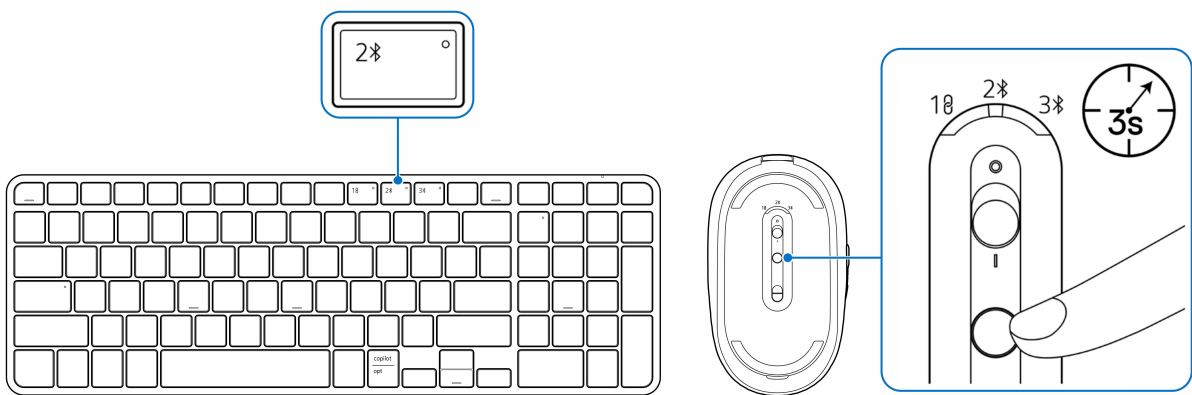


Figure 22. Initiating pairing with devices

4. Pair your wireless keyboard and mouse with your Bluetooth-enabled computer.
 1. Select **Start > Settings > Bluetooth & devices > Add device**.
 2. Click **Bluetooth**. A list of Bluetooth-enabled devices is displayed.
 3. Click **Dell MS746**, and then click **Done**.
 4. Click **Dell KB746** and type the numbers shown onscreen using the wireless keyboard. Press Enter, and then click **Done**.
 - ① **NOTE:** Ensure that the distance between your computer and keyboard and mouse are within the Bluetooth reception range.
 5. Confirm the pairing process on both the wireless keyboard and mouse and your computer. The Bluetooth channel LED (2⌘) turns solid white for a few seconds to confirm the pairing, and then the light turns off. After your keyboard and mouse and computer pairing is completed, the keyboard and mouse connects to the computer automatically when the Bluetooth is enabled and both devices are within the Bluetooth range.

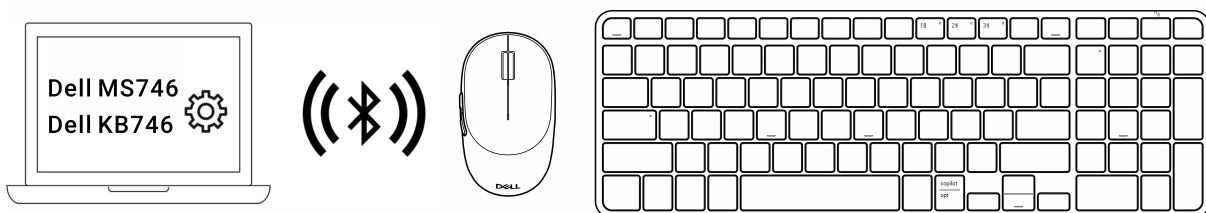


Figure 23. First Bluetooth-enabled device pairing

Pairing device two using Bluetooth

- ① **NOTE:** You can connect up to two devices with your wireless keyboard and mouse using Bluetooth.
- ① **NOTE:** Before pairing your wireless keyboard and mouse using Bluetooth, ensure that you unpair the inactive devices on your computer. Update the Bluetooth Driver on your Dell computer to the latest version. For more information, see **Drivers & Downloads** at [Dell Support Site](#).
- ① **NOTE:** Ensure that the distance between your computer and mouse is within the Bluetooth reception range.
- ① **NOTE:** For Bluetooth pairing, you can use Swift Pair or manual pair option.

1. In **Windows Search**, type **Bluetooth**.
2. Click **Bluetooth and other devices settings**. The **Settings** window appears.
3. Ensure that the Show notifications to connect using Swift Pair check box is selected.

Show notifications to connect using Swift Pair

When selected, you can connect to supported Bluetooth devices quickly when they're close by and in pairing mode.

Figure 24. Show notifications

4. Ensure that the Bluetooth is turned on.
5. Place your wireless mouse near your computer. Then press the connection-mode button to switch to the second Bluetooth pairing mode (3⌘).
6. Press the connection-mode button for three seconds. Ensure that the Bluetooth channel LED (3⌘) blinks white, indicating that the Bluetooth pairing is initiated. The **New Dell MS746 found** window appears.
7. On the wireless keyboard, press 3⌘ to initiate pairing. The **New Bluetooth Keyboard found** window appears.

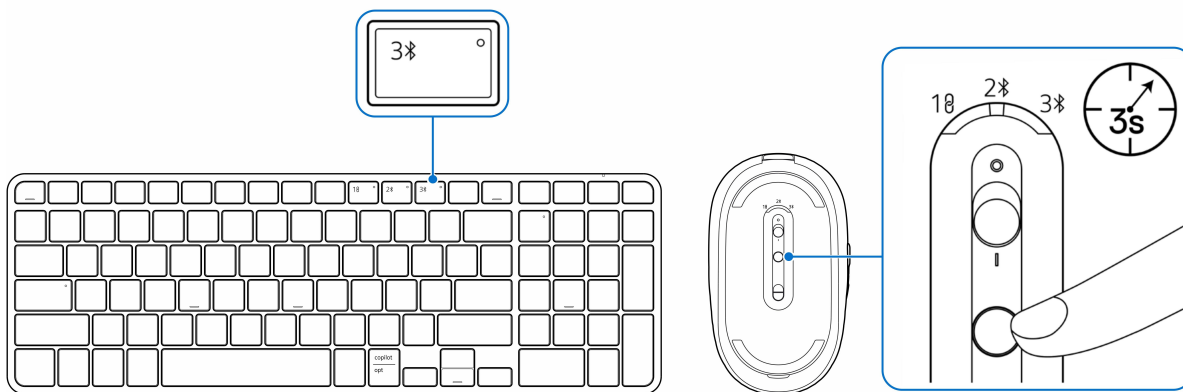


Figure 25. Initiating pairing

8. Click **Connect** and confirm the pairing process on both the wireless mouse and your computer.

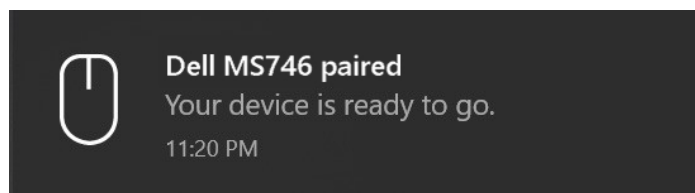


Figure 26. Dell MS746 mouse is paired

9. Click **Connect** to confirm the pairing process between the wireless keyboard and your computer. Type the pin number that is shown on screen using the wireless keyboard and press Enter.

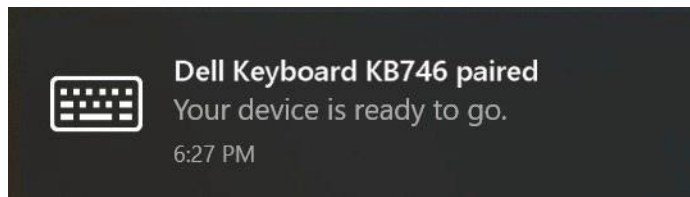


Figure 27. Dell KB746 keyboard is paired

Switching between paired devices

Your wireless keyboard and mouse remember the last connection mode. When you turn on the keyboard and mouse, the last connection-mode light along with the low battery-status light on the mouse turns on for three seconds.

If you want to switch to another paired device, toggle the connection-mode button on the mouse until the respective connection-mode light turns on. Press the corresponding keys on the keyboard.

For example, if you want to connect the wireless keyboard and mouse to the second Bluetooth device (3*), then press the connection-mode button until the connection-mode light (3*) is selected on the mouse and press 3* on the keyboard.

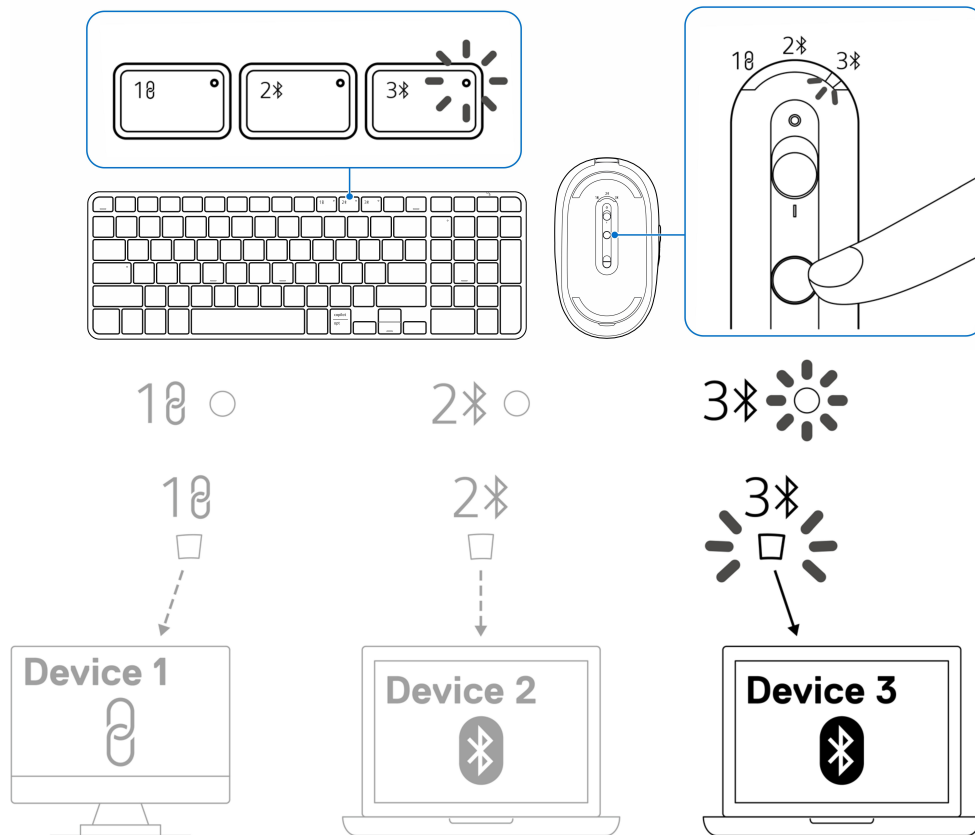


Figure 28. Switching between paired devices

Smart Connect

- Smart Connect enables the keyboard and mouse to automatically switch between the USB receiver (RF) and paired Bluetooth devices so that you stay connected without manually changing the connection mode.
 - After you have paired the keyboard and mouse on multiple channels (2.4 GHz RF and up to two Bluetooth devices), the devices continuously monitor the connection status on each channel.
 - When the active connection is lost (for example, the connected computer is turned off, put to sleep, goes out of range, or the USB receiver is removed), the device automatically searches the remaining paired channels in the following order and connects to the first available device:
 - Dell Secure Link USB receiver (RF)
 - Bluetooth device 1 (BT1)
 - Bluetooth device 2 (BT2)
 - When the device is connected over Bluetooth, it periodically checks if the USB receiver becomes available again. If the RF connection is detected, the device automatically switches back to RF to provide the most stable and responsive connection.
 - When you manually switch the connection mode to a specific Bluetooth channel using the connection-mode button on the mouse or the keyboard shortcut, the device stays on that channel and Smart Connect is temporarily disabled. To re-enable Smart Connect, turn off the keyboard or mouse, and then turn on again.
- NOTE:** Smart Connect only works between channels that are already setup and successfully paired. Unpaired channels are skipped during the automatic search.

Mouse specifications

General

Table 6. General specifications

Description	Value
Model number	MS746
Connection type	<ul style="list-style-type: none">• Wireless (2.4 GHz RF with Dell Secure Link Receiver)• Bluetooth (2 x BLE 6)
System requirement.	<ul style="list-style-type: none">• Windows 10, 11 (64-bit) – full device functionality, including Dell Display and Peripheral Manager, Over-The-Air (OTA) firmware update, and Swift Pair.• Android• ChromeOS• macOS• iOS• iPadOS• Linux• Free-DOS – device functionality only, no additional software, and no Swift Pair.

Electrical

Table 7. Electrical specifications

Description	Value
Operating voltage	5V
Battery type (Supercapacitor)	Supercapacitor 250F to meet the run time specs
Run time	1.5 months on a full charge. Up to three minutes to charge full. One day run time for a five to ten seconds charging from dead battery capacity.

Physical characteristics

Table 8. Physical characteristics

Description	Value
Weight	77.00 g (0.17 lb)
Dimensions:	
Length	107.14 mm (4.22 in.)
Width	62.75 mm (2.47 in.)
Height	38.00 mm (1.53 in.)

Environmental

Table 9. Environmental specifications

Description	Value
Temperature:	
Operating	-10°C to 50°C (14°F to 122°F)
Storage	-40°C to 65°C (-40°F to 149°F)
Storage humidity	20% to 90% relative humidity; non-condensing

Wireless

Table 10. Wireless specifications

Description	Value
RF resolution	2.4 GHz RF
Transmission range	> 10 m (outdoor without any interference)

Keyboard specifications

General

Table 11. General specifications

Description	Value
Model number	KB746
Connection type	<ul style="list-style-type: none">• Wireless (2.4 GHz RF with Dell Secure Link Receiver)• Bluetooth (2 x BLE 6)
System requirement	<ul style="list-style-type: none">• Windows 10, 11 (64-bit) – full device functionality, including Dell Display and Peripheral Manager, Over-The-Air (OTA) firmware update, and Swift Pair.• Android• ChromeOS• macOS• iOS• iPadOS• Linux• Free-DOS – device functionality only, no additional software, and no Swift Pair.

Electrical

Table 12. Electrical specifications

Description	Value
Operating voltage	5 V
Battery type (Supercapacitor)	150F supercapacitor to meet the run time specs
Run time	Three months on a full charge. Up to five minutes to charge full. One day run time for a five to ten seconds charging from dead battery capacity.

Physical characteristics

Table 13. Physical characteristics

Description	Value
Weight	513.00 g (1.13 lb)
Dimensions:	
Length	361.04 mm (14.21 in.)
Width	121.36 mm (4.78 in.)
Height	17.78 mm (0.70 in.)

Environmental

Table 14. Environmental specifications

Description	Value
Temperature:	
Operating	-10°C to 50°C (14°F to 122°F)
Storage	-40°C to 65°C (-40°F to 149°F)
Storage humidity	20% to 90% relative humidity; non-condensing

Wireless

Table 15. Wireless specifications

Description	Value
RF resolution	2.4 GHz RF
Transmission range	> 10 m (outdoor without any interference)

Troubleshooting

Table 16. Troubleshooting

Problems	Possible solutions
Unable to find the USB receiver for the wireless mouse or wireless keyboard	<ol style="list-style-type: none"> 1. Locate the USB receiver inside your mouse. The USB receiver is shipped and placed inside the wireless mouse USB storage location. Only one USB receiver is required for both the wireless mouse and wireless keyboard. 2. If you have accidentally unpaired the wireless mouse or keyboard, use the Dell Display and Peripheral Manager to pair the wireless mouse or keyboard again.
Keyboard or mouse is not functioning	<ol style="list-style-type: none"> 1. Check the battery level. If the battery is exhausted, charge the battery with the USB cable that is provided with the keyboard and mouse. 2. Turn off the device, and then turn it on. Check if the battery-status light is flashing white, indicating that the battery power is low. Recharge the battery. If the battery is fully depleted, the low battery-status light does not turn on. 3. Restart your computer. Ensure that the USB receiver is directly connected to your computer and test keyboard or mouse using RF wireless connection. 4. Check for interference that may affect the USB receiver connectivity, such as nearby Wi-Fi and USB 3.0 devices. <ul style="list-style-type: none"> • Check for any wireless devices that are near such as wireless networking devices (Bluetooth printer and USB 3.0 device), wireless pointing devices, and microwave ovens. • Move away from these devices. Change the USB port. Connect the USB receiver to another USB port on your computer without other USB device connected next to your USB port.
Unable to pair the keyboard or mouse with your computer using the USB receiver	<ol style="list-style-type: none"> 5. Ensure that the distance between the computer and your wireless keyboard or wireless mouse is within 1 meters distance. Avoid placing metal objects, thick items between the USB receiver and the devices to maintain a stable signal. 6. If necessary, connect the USB receiver to the USB receiver extender and check the wireless connection again. 7. If you have accidentally unpaired the wireless keyboard or mouse, use the Dell Display and Peripheral Manager to pair the wireless keyboard or mouse again. 8. For pairing the keyboard and mouse with Bluetooth, refer to Pairing your wireless keyboard and mouse using Bluetooth.
Unable to use the function keys (F1 to F12) without holding Fn key	<ol style="list-style-type: none"> 1. The keyboard function keys (F1 to F12) are by default set to media keys and other specific functions. 2. To switch to standard function keys, press Fn + Esc to lock the function key mode. Once locked, F1 to F12 can be used directly without holding Fn. 3. To unlock and revert to media keys, press Fn + Esc again.

Problems	Possible solutions
Mouse pointer does not move	<ol style="list-style-type: none"> 1. Check the battery level. If the battery is exhausted, charge the battery with the USB cable that is provided with the keyboard and mouse. 2. Turn off the device, and then turn it on. Check if the battery-status light is flashing white, indicating the battery power is low. Recharge the battery. If the battery is fully depleted, the low battery-status light does not turn on. 3. Restart your computer. Ensure that the USB receiver is directly connected to your computer and test keyboard or mouse using RF wireless connection.
Mouse left or right button does not work	<ol style="list-style-type: none"> 4. Check for interference that may affect the USB receiver connectivity, such as nearby Wi-Fi and USB 3.0 devices. <ul style="list-style-type: none"> • Check for any wireless devices that are near such as wireless networking devices (Bluetooth printer and USB 3.0 device), wireless pointing devices, and microwave ovens. • Move away from these devices. Change the USB port. Connect the USB receiver to another USB port on your computer without other USB device connected next to your USB port.
Keyboard keys do not work	
Wireless connection is lost	
Keyboard key presses are lagging, auto repeating, and erratic.	<ol style="list-style-type: none"> 5. Ensure that the distance between the computer and your wireless mouse or wireless keyboard is within 10 meters distance. Avoid placing metal objects, thick items between the USB receiver and the devices to maintain a stable signal. 6. If necessary, connect the USB receiver to the USB receiver extender and check the wireless connection again. 7. For pairing the keyboard and mouse with Bluetooth, refer to Pairing your wireless keyboard and mouse using Bluetooth.
Mouse cursor disappears or disconnects after being idle	<ol style="list-style-type: none"> 1. Check the battery level. If the battery is exhausted, charge the battery with the USB cable that is provided with the keyboard and mouse. 2. Turn off the device, and then turn it on again. Check if the battery-status light is flashing white, indicating that the battery power is low. Recharge the battery. If the battery is fully depleted, the low battery-status light does not turn on. 3. On your computer, turn the Bluetooth off and on. 4. Restart your computer. 5. Ensure that the distance between your computer and mouse is within 10 meters. 6. Remove the mouse from Bluetooth settings and re-pair it. 7. If using the USB receiver, follow the Wireless connection is loss troubleshooting steps. 8. Check if you have installed the latest Bluetooth driver on your computer. For more information, see Drivers & Downloads at Dell Support Site.

Problems	Possible solutions
<p>Connection-mode button is unresponsive</p>	<ol style="list-style-type: none"> 1. Press the connection-mode button multiple times until the LED indicator responds. 2. Turn off the device, and then turn it on. 3. Check the battery level. If the battery is exhausted, charge the battery with the USB cable that is provided with the keyboard and mouse. 4. Turn off the device, and then turn it on again. Check if the battery-status light is flashing white, indicating that the battery power is low. Recharge the battery. If the battery is fully depleted, the battery-status light does not turn on. 5. After the device wakes up from idle mode, press the button multiple times. This is a normal behavior. 6. Ensure that you have installed the latest firmware version using Dell Display and Peripheral Manager.
<p>Swift Pair does not work</p>	<ol style="list-style-type: none"> 1. Ensure that Bluetooth is turned on. 2. In Windows Search, type Bluetooth. Click Bluetooth and other devices settings. 3. Ensure that the Show notifications to connect using Swift Pair check box is selected. 4. Press the connection-mode button for three seconds to initiate Bluetooth pairing mode. Ensure that the Bluetooth channel LED blinks white. 5. If Swift Pair notification does not appear, pair the device manually through Bluetooth settings. 6. Update Windows to the latest version.
<p>Charging LED does not blink or behave as expected</p>	<ol style="list-style-type: none"> 1. Ensure that the charging cable is properly connected to both the device and the USB port. 2. Try a different USB port on your computer. 3. Check if the USB port provides sufficient power for charging. 4. Observe the LED behavior. Blinking white indicates charging, solid white indicates fully charged. 5. If the LED stops blinking while charging, check if the battery is already fully charged. 6. If the issue persists, try a different USB-C cable.

Problems	Possible solutions
<p>Mouse pointer is moving slowly</p>	<ol style="list-style-type: none"> 1. Ensure that the sensor is not obstructed or dirty. Glass or smooth glossy surfaces are not suitable for the mouse sensor to capture the mouse movement. Using a dark-colored fabric mouse pad can improve the tracking. 2. Change the mouse settings to adjust the pointer speed. 3. Click the tab that matches the Operating System (OS) installed on your laptop or desktop and perform the steps within that section to change the settings. 4. In the Windows Search box, type main.cpl. Click main.cpl in the list of programs. The Mouse Properties dialog box appears. 5. Click the Pointer Options tab. In the Motion section, move the slider to adjust the pointer speed to the desired level. 6. Click OK. 7. The mouse has default 1600 DPI setting when shipped. Dell Display and Peripheral Manager can be used to adjust the DPI setting. Ensure that the DPI setting is at 1600 or above for smoother mouse movement using high-resolution display.
<p>Mouse movement and button clicks are lagging and erratic.</p>	<ol style="list-style-type: none"> 1. Check for interference that may affect wireless connectivity, such as nearby Wi-Fi and USB 3.0 devices. <ul style="list-style-type: none"> • Check for any wireless devices that are near such as wireless networking devices (Bluetooth printer and USB 3.0 device), wireless pointing devices, and microwave ovens. • Move away from these devices. 2. Ensure that the distance between your laptop, desktop, or a compatible mobile device is within one meter. 3. If you are using the USB receiver to connect your mouse, ensure that the USB-A port where the USB receiver is connected is not close to the USB-A ports where other devices are connected. 4. Mouse connection speed is at 125 Hz (USB receiver wireless connection) or 133 Hz (Bluetooth). If you have to adjust to higher connection speeds, change back to default, and test again. 5. If necessary, connect the USB receiver to the USB receiver extender and check the wireless connection again. 6. Update the device firmware using the Dell Display and Peripheral Manager when required. 7. The mouse has default 1600 DPI setting when shipped. Dell Display and Peripheral Manager can be used to adjust the DPI setting. Ensure that the DPI setting is at 1600 or above for smoother mouse movement using high-resolution display.
<p>Dell Display and Peripheral Manager software features are not working as intended</p>	<p>Dell Display and Peripheral Manager features are dependent on the operating system and processor that is installed in your computer. For more information, see the documentation for Dell Display and Peripheral Manager at Dell Support Site.</p>

Statutory information

Warranty

Limited warranty and return policies

Dell Pro 7 Rechargeable Compact Keyboard and Mouse (KM746) carry a three-year limited hardware warranty.

For U.S. customers:

This purchase and your use of this product are subject to Dell's end user agreement, which you can find at [Terms of Sale](#). This document contains a binding arbitration clause.

For European, Middle Eastern and African customers:

Dell Pro 7 Rechargeable Compact Keyboard and Mouse (KM746) that is sold and used is subject to applicable national consumer legal rights, the terms of any retailer sale agreement that you have entered into (which applies between you and the retailer) and Dell's end user contract terms.

Dell may also provide an additional hardware warranty – full details of the Dell end user contract and warranty terms can be found by going to [Terms of Sale](#), selecting your country from the list at the bottom of the "home" page and then clicking the "terms and conditions" link for the end user terms or the "support" link for the warranty terms.

For non-U.S. customers:

Dell Pro 7 Rechargeable Compact Keyboard and Mouse (KM746) that is sold and used is subject to applicable national consumer legal rights, the terms of any retailer sale agreement that you have entered into (which applies between you and the retailer) and Dell's warranty terms. Dell may also provide an additional hardware warranty – full details of Dell's warranty terms can be found by going to [Dell Site](#), selecting your country from the list at the bottom of the "home" page and then clicking the "terms and conditions" link or the "support" link for the warranty terms.

European Accessibility Act

- Power button location: With the keyboard laying down face up, and the space bar closer to the end user, the user can tactilely discern the location of the power button. The end user can feel for the top key in the right-hand corner of the keyboard and count one key to the left. If they reach towards the back of the keyboard from there, they can feel the power switch.
 - For Windows-only keyboards, Off position is towards the center of the keyboard, and On is located towards the edge of the keyboard.
 - For dual-layout keyboards, to determine where the switch to control the dual layout settings: Off is in the middle position, with MAC OS position towards the center of the keyboard, and Windows OS position towards the outside edge of the keyboard.

Revision history

The following table provides the revision history of this document:

Table 17. Revision history

Revision	Date	Description
A00	April 2026	Original publish date.