



# Jaco Drawer Insert Tray, Button-Lock, 3 Compartments, No Lids

Part Number: 51-3949

Quote Description: INSERT, TRAY, BTN-LOCK, 3 COMPT

Product Group: HC-Options - Drawers

Minimum Order Qty: 1

Weight: 3.00 LB

Length: 11.50"

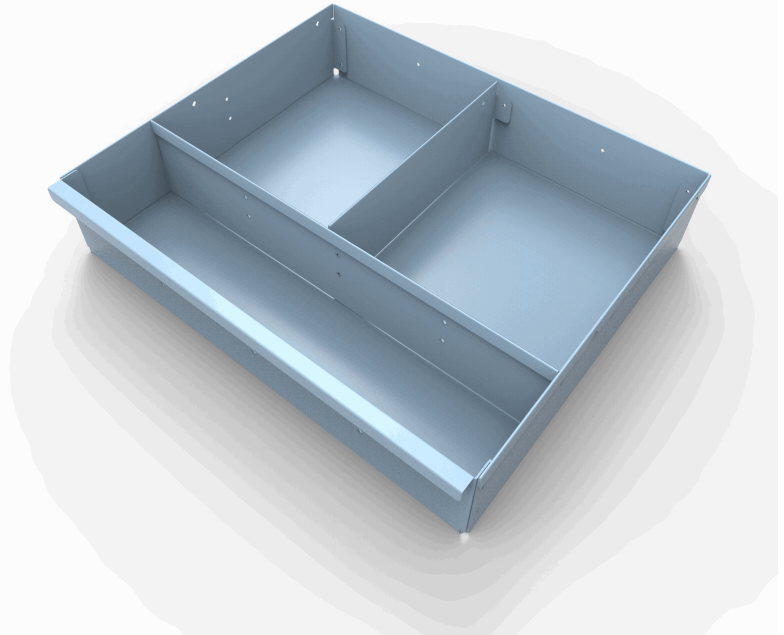
Width: 13.50"

Height: 3.00"

Warranty: 7 Year Structural; 3 Year OEM

### Product Description:

Add additional storage to your Jaco Cart with our configurable drawer system. Choose from 3 inch or 7 inch drawers with a variety of locking mechanisms, storage compartments, or removable bins.



### Product Compatibility:

|         |          |          |               |                |           |
|---------|----------|----------|---------------|----------------|-----------|
| 100: No | 200: Yes | 310: Yes | 510: Yes      | J1-10: No      | WS-14: No |
| 105: No | 210: Yes | 320: Yes | 510-L250: Yes | J1-10-L250: No | WS-25: No |
| 160: No | 220: Yes |          | 510-L500: Yes | J1-10-L500: No |           |
|         | 225: Yes |          |               |                |           |
|         |          |          | 520: Yes      | J1-20: No      | WA-40: No |
|         |          |          | 520-L250: Yes | J1-20-L250: No | WA-60: No |
|         |          |          | 520-L500: Yes | J1-20-L500: No | WA-80: No |

### Additional Compatibility Notes:

Insert for Button-Locking Drawer, if used on 7" Drawer, add foam spacers

