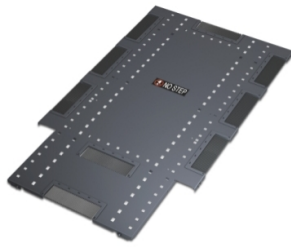


# Product data sheet

Specifications



## NetShelter SX 600mm Wide x 1200mm Deep Roof Black

AR7211

### Overview

<b>Presentation</b>	NetShelter SX roofs feature superior cable access and flexibility with toolless installation and reversibility.
<b>Lead time</b>	Usually in Stock

### Main

<b>Provided equipment</b>	Grommets Installation guide
---------------------------	--------------------------------

### Physical

<b>Color</b>	Black
<b>Height</b>	0.6 in (1.6 cm)
<b>Width</b>	22.6 in (57.5 cm)
<b>Depth</b>	35.7 in (90.8 cm)
<b>Net Weight</b>	8.02 lb(US) (3.64 kg)
<b>Mounting preference</b>	No preference
<b>Mounting Mode</b>	Not rack-mountable
<b>Marking</b>	18 gauge roof

### Ordering and shipping details

<b>GTIN</b>	731304249269
-------------	--------------

### Packing Units

<b>Unit Type of Package 1</b>	PCE
<b>Number of Units in Package 1</b>	1
<b>Package 1 Height</b>	4.02 in (10.2 cm)
<b>Package 1 Width</b>	40.0000000000 in (101.6 cm)
<b>Package 1 Length</b>	26.0 in (66 cm)
<b>Package 1 Weight</b>	14.02 lb(US) (6.36 kg)

### Contractual warranty

<b>Warranty</b>	2 years repair or replace
-----------------	---------------------------

Price is "List Price" and may be subject to a trade discount – check with your local distributor or retailer for actual price.

## Sustainability

**Green Premium™ label** is Schneider Electric's commitment to delivering products with best-in-class environmental performance. Green Premium promises compliance with the latest regulations, transparency on environmental impacts, as well as circular and low-CO<sub>2</sub> products.

**Guide to assessing product sustainability** is a white paper that clarifies global eco-label standards and how to interpret environmental declarations.

[Learn more about Green Premium >](#)

[Guide to assess a product's sustainability >](#)



Take-back   Transparency   RoHS/REACH

## Resource performance

 Take-Back Program Available

---

## Well-being performance

 Reach Free Of Svhc

---

 Toxic Heavy Metal Free

---

 Mercury Free

---

 Rohs Exemption Information   [Yes](#)

---

## Certifications & Standards

**Reach Regulation**   [REACH Declaration](#)

---

**Eu Rohs Directive**   Pro-active compliance (Product out of EU RoHS legal scope)  
[EU RoHS Declaration](#)

---

**Environmental Disclosure**   [Product Environmental Profile](#)

---

**Circularity Profile**   [End of Life Information](#)

---